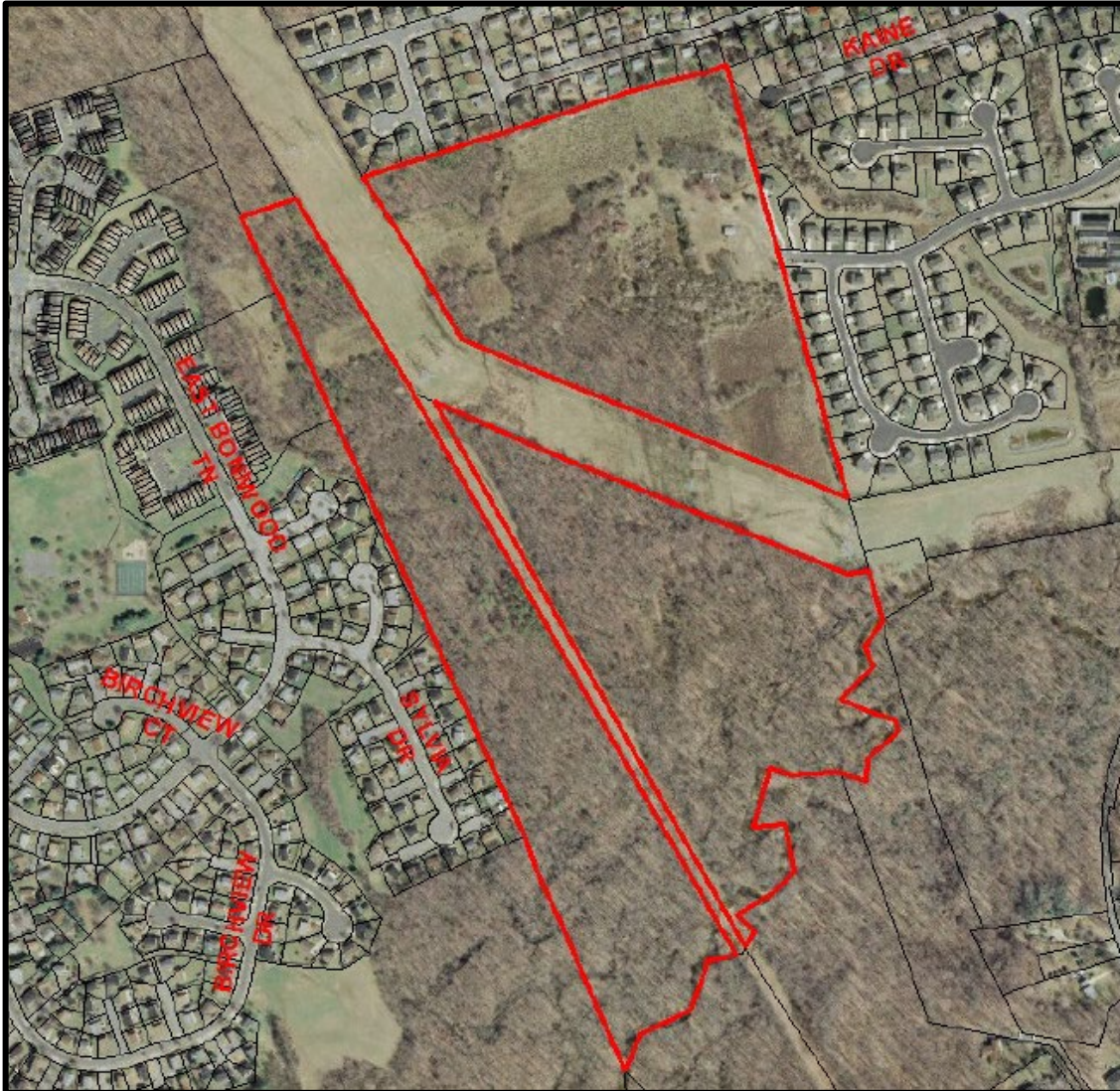


THE VINEYARDS II

Reconsideration Hearing

Staff Recommendation: APPROVAL with conditions



AERIAL MAP

Legend

- Site Boundary
- Property

IMAGERY FROM
SPRING 2011



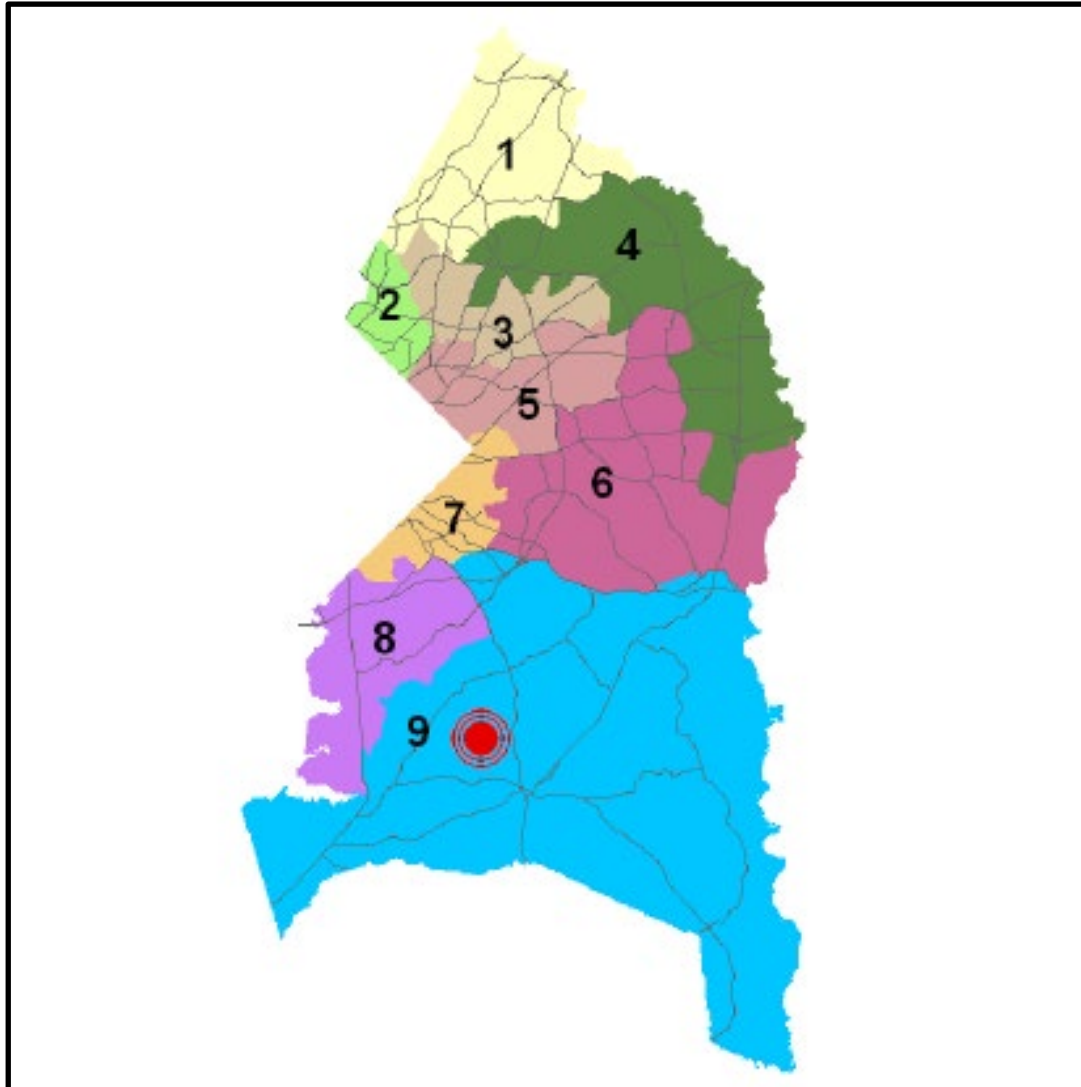
The Maryland-National Capital Park and Planning Commission
Prince George's County Planning Department
Geographic Information System

Created: October 25, 2012

GENERAL LOCATION MAP

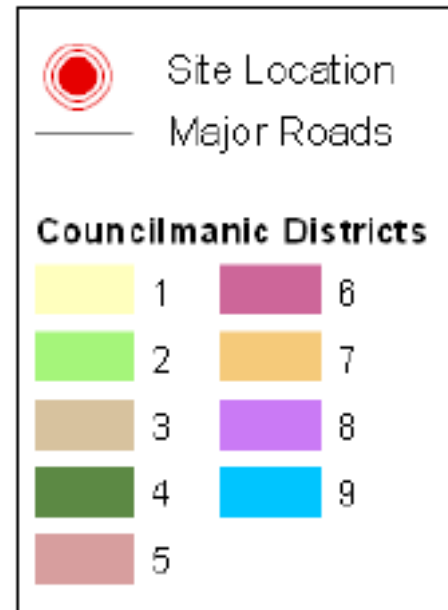
Council District: 09

Planning Area: 81A



GENERAL LOCATION MAP

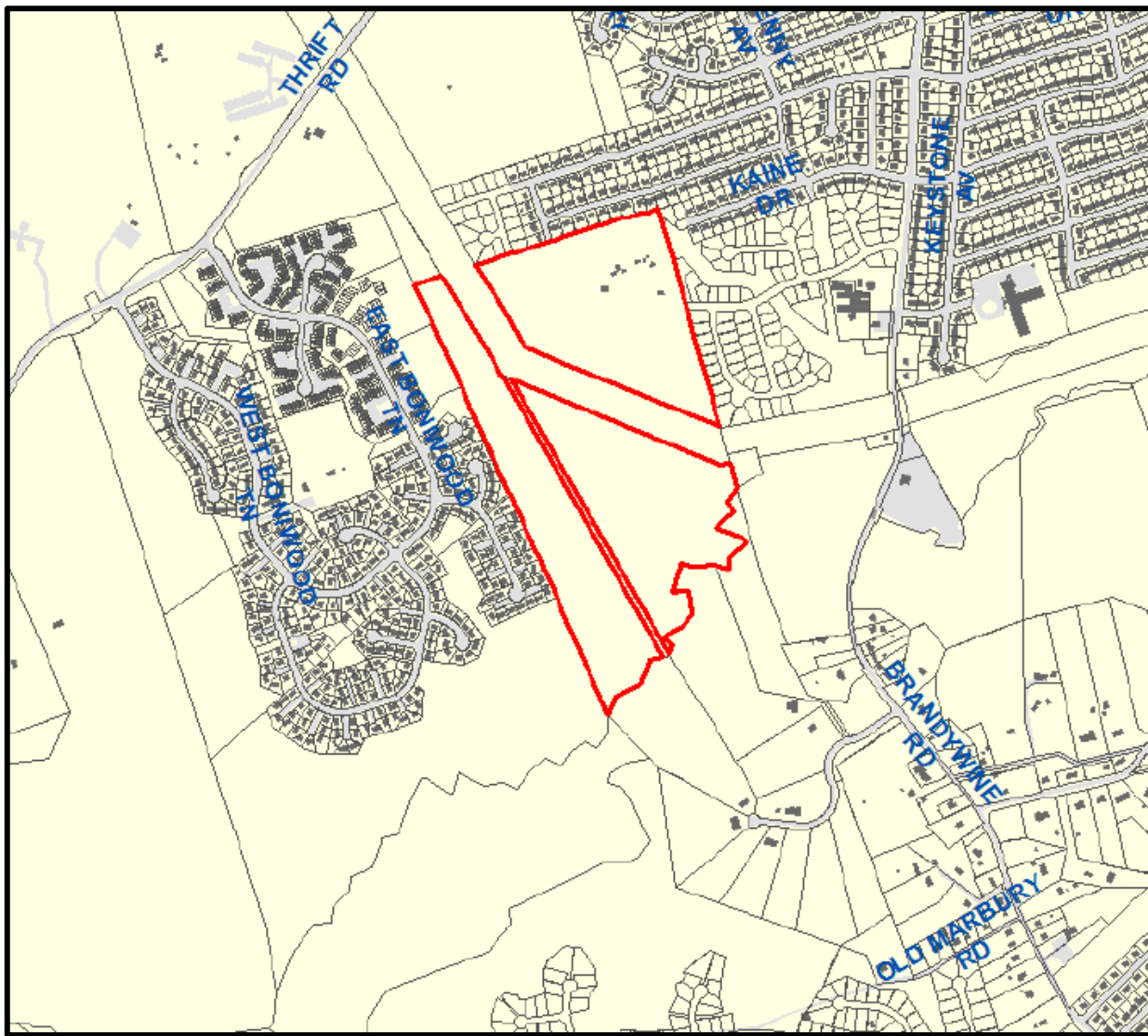
Legend



The Maryland-National Capital Park and Planning Commission
Prince George's County Planning Department
Geographic Information System





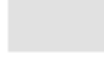

Created: October 25, 2012

SITE VICINITY MAP



SITE VICINITY MAP

Legend

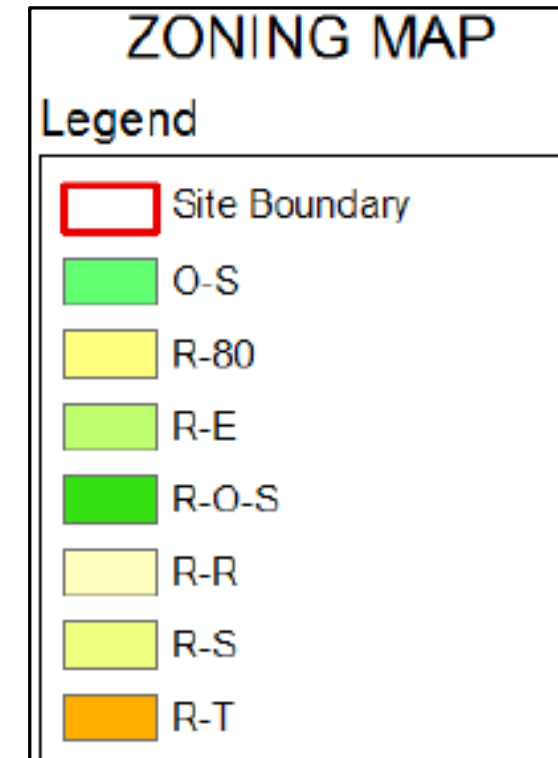
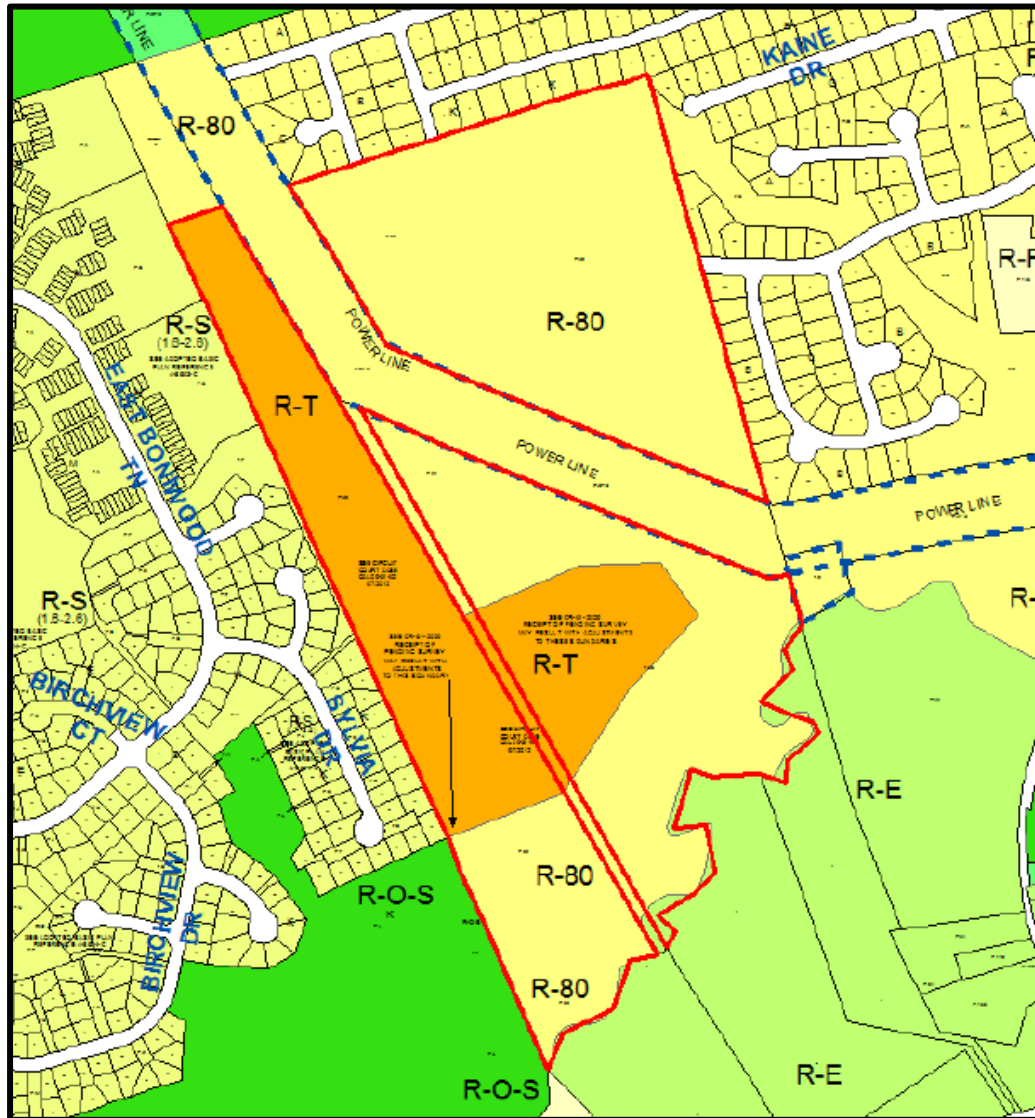
	Site Boundary
	Property
	Building
	Bridge
	Pavement
	Railroad Line



The Maryland-National Capital Park and Planning Commission
Prince George's County Planning Department
Geographic Information System

Created: October 25, 2012

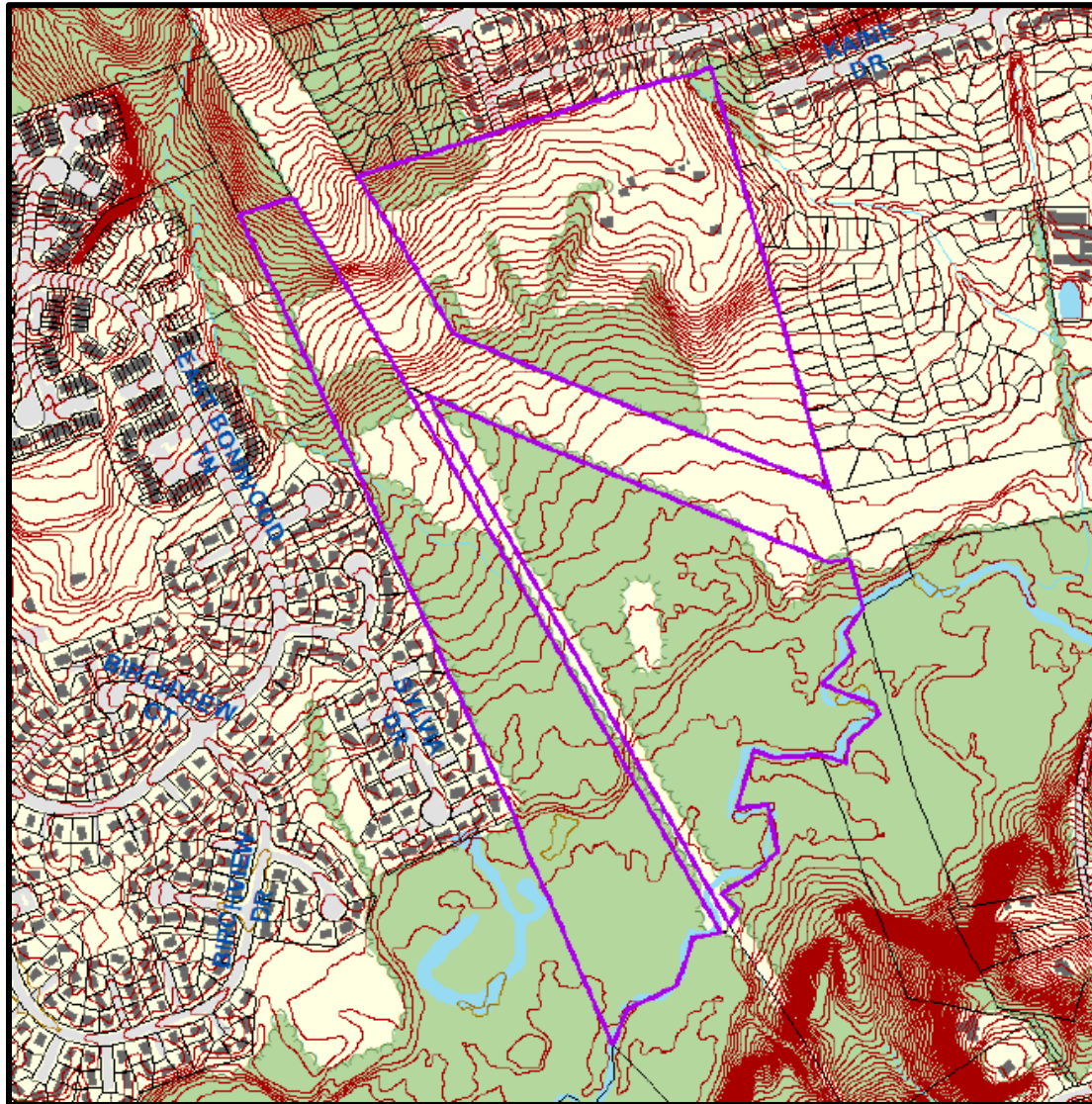
ZONING MAP



The Maryland-National Capital Park and Planning Commission
Prince George's County Planning Department
Geographic Information System

Created: October 25, 2012

SITE MAP



SITE MAP

Legend

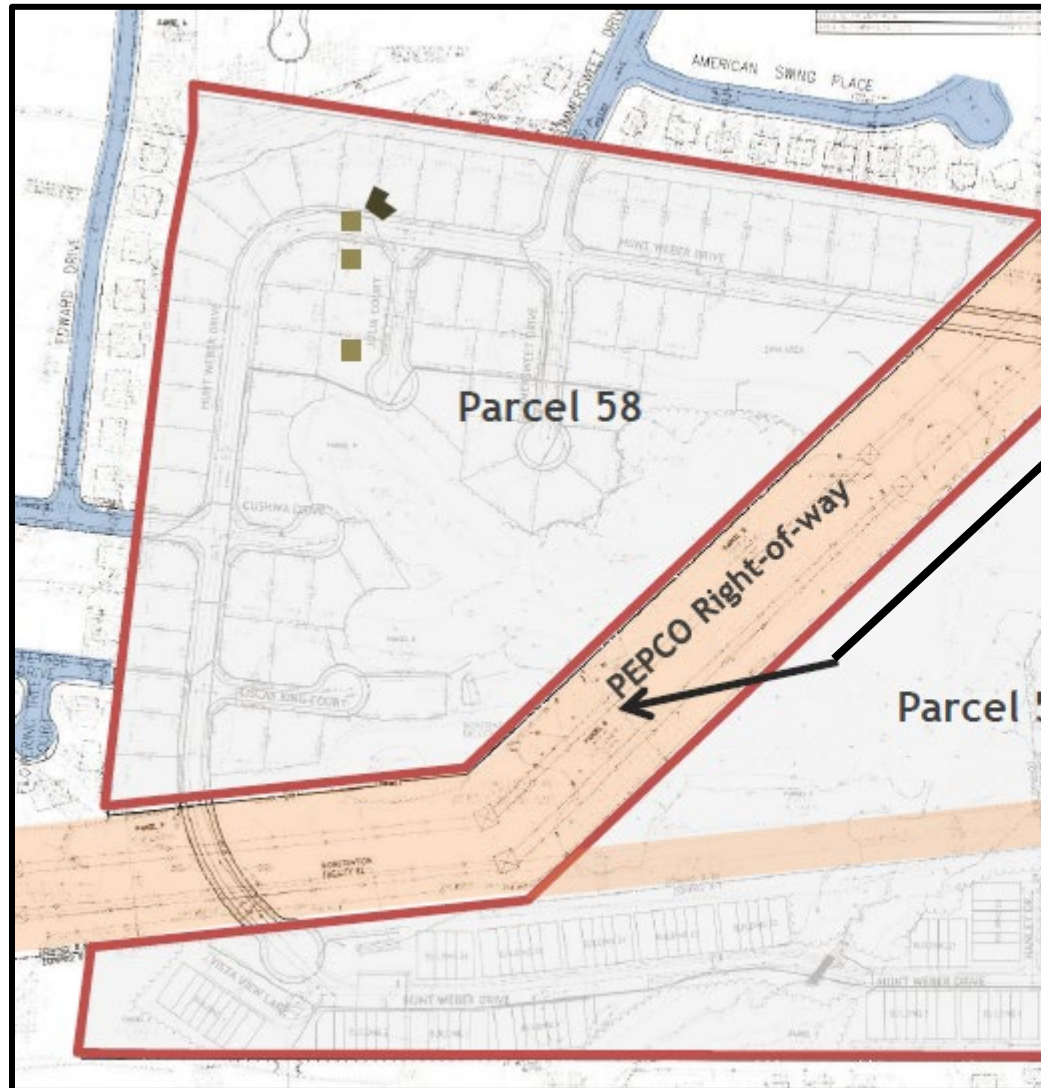
	Site Boundary
	Building
	Bridge
	Pavement
	Water
	Vegetation
	Property
	Contour Line
	Depression Line
	Railroad Line



The Maryland-National Capital Park and Planning Commission
Prince George's County Planning Department
Geographic Information System

Created: October 25, 2012

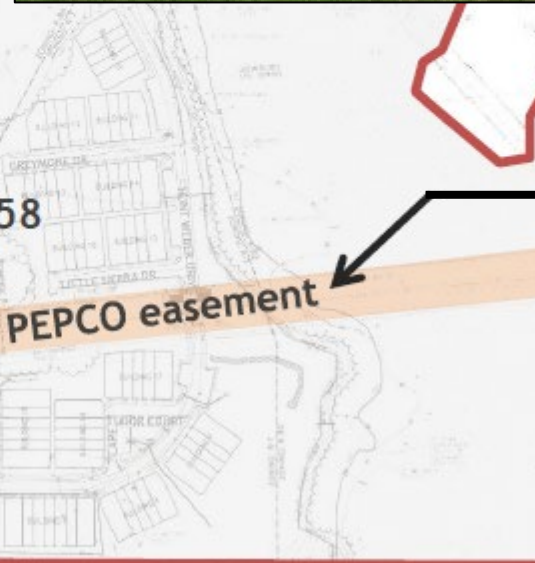
EXISTING CONDITIONS



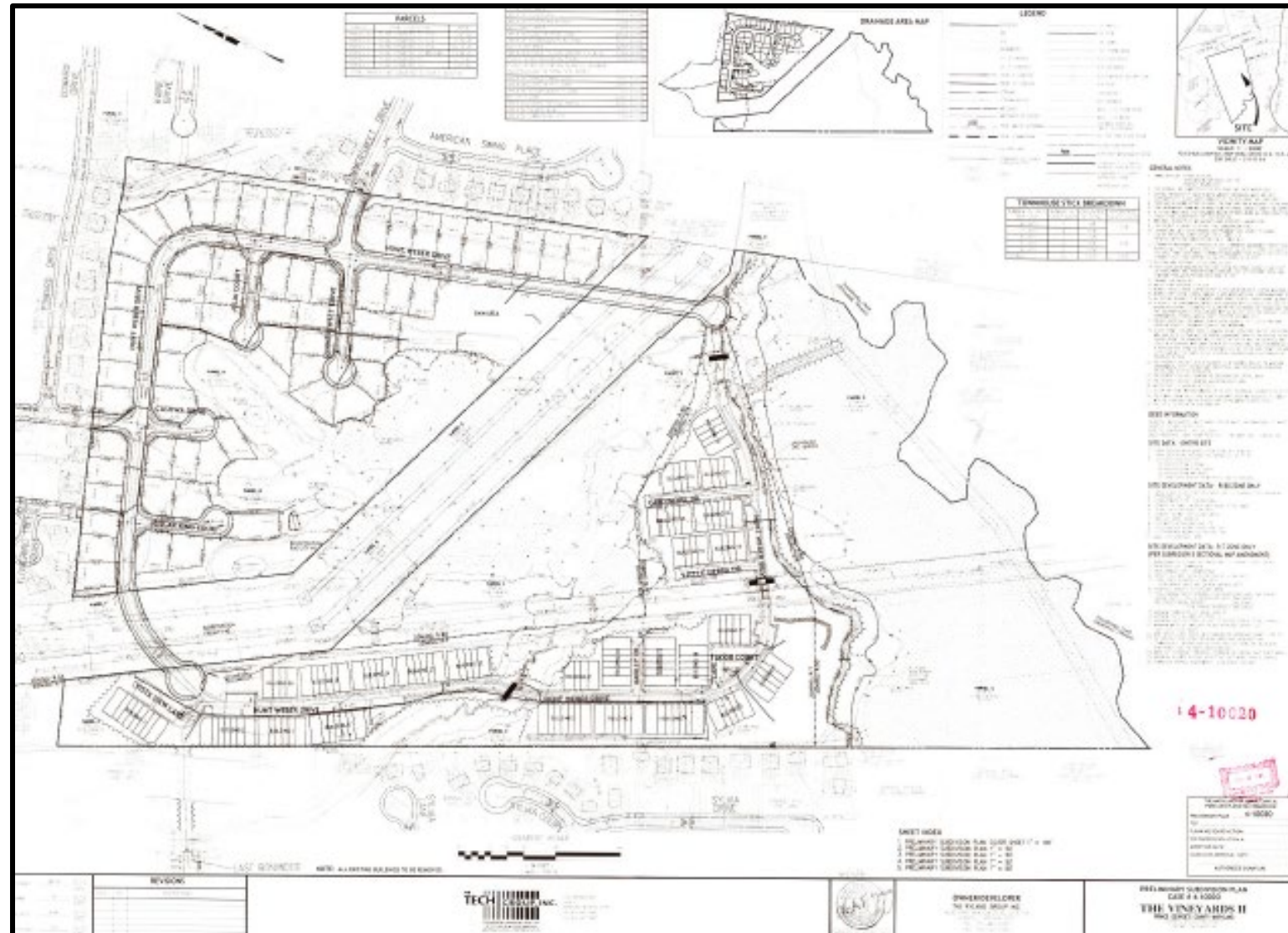
12/03/2021

The Maryland-National Capital Park and Planning Commission
Prince George's County Planning Department
Geographic Information System

Created: October 25, 2012

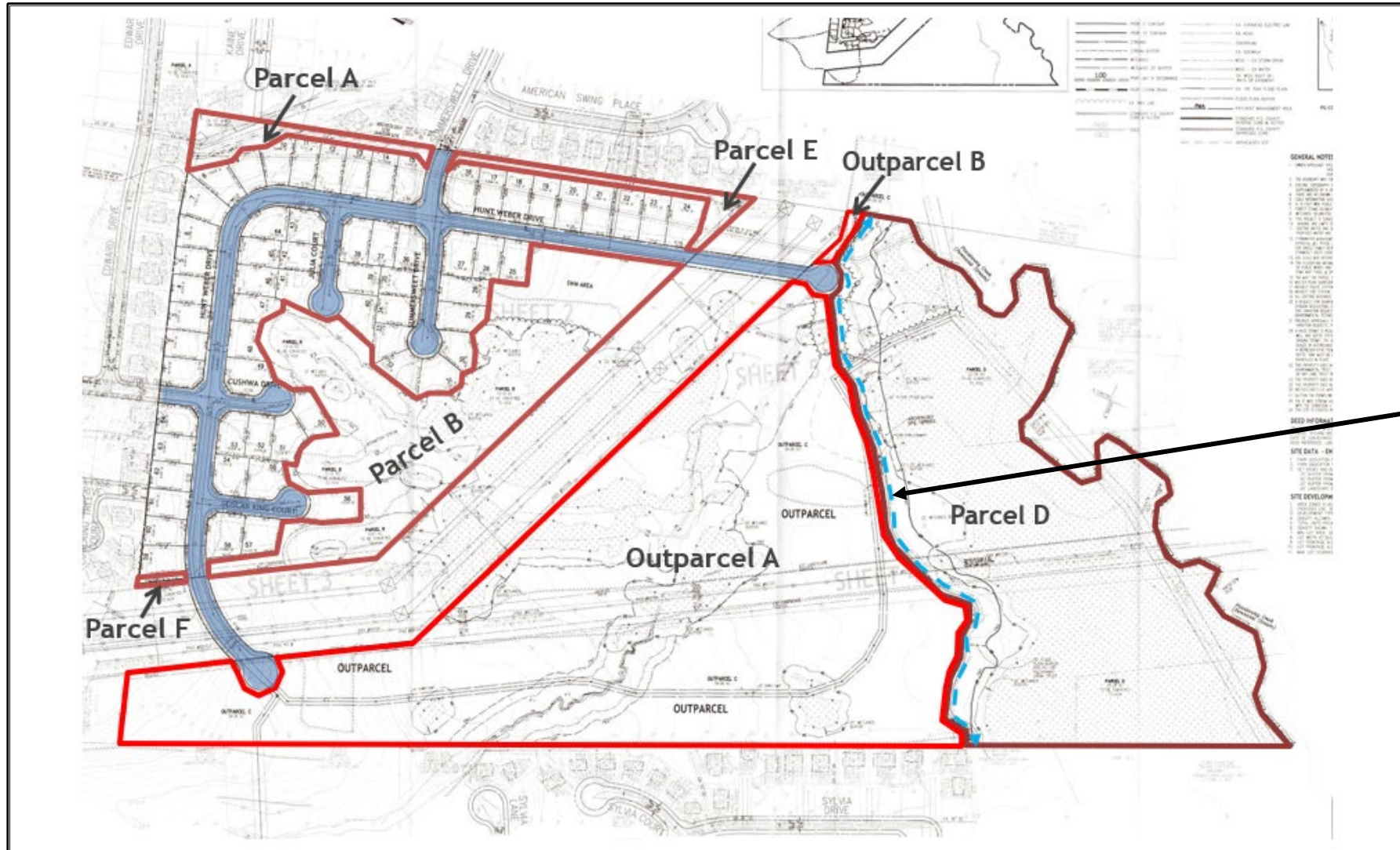


PRELIMINARY PLAN OF SUBDIVISION



12/03/2021

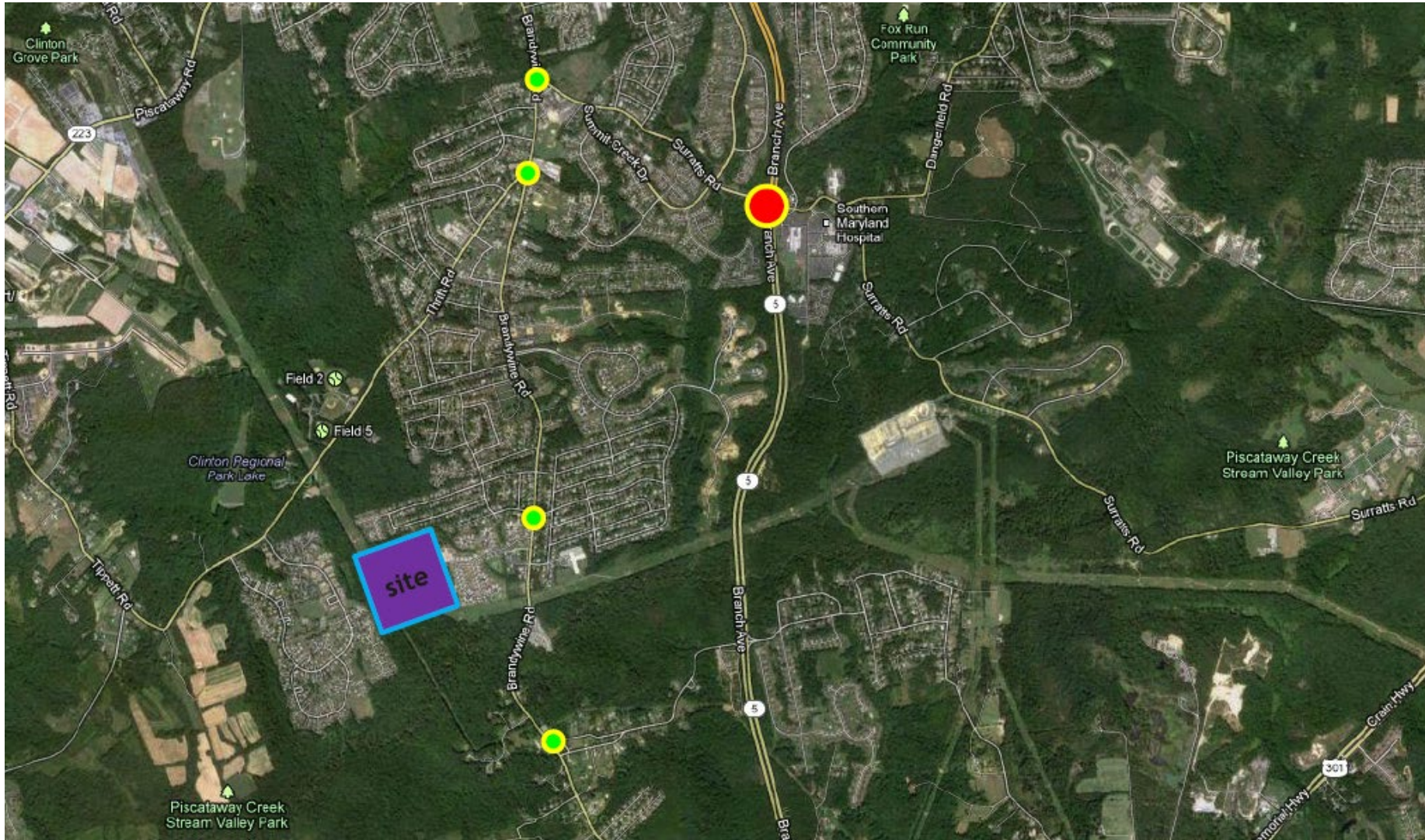
TRAIL EXHIBIT



12/03/2021

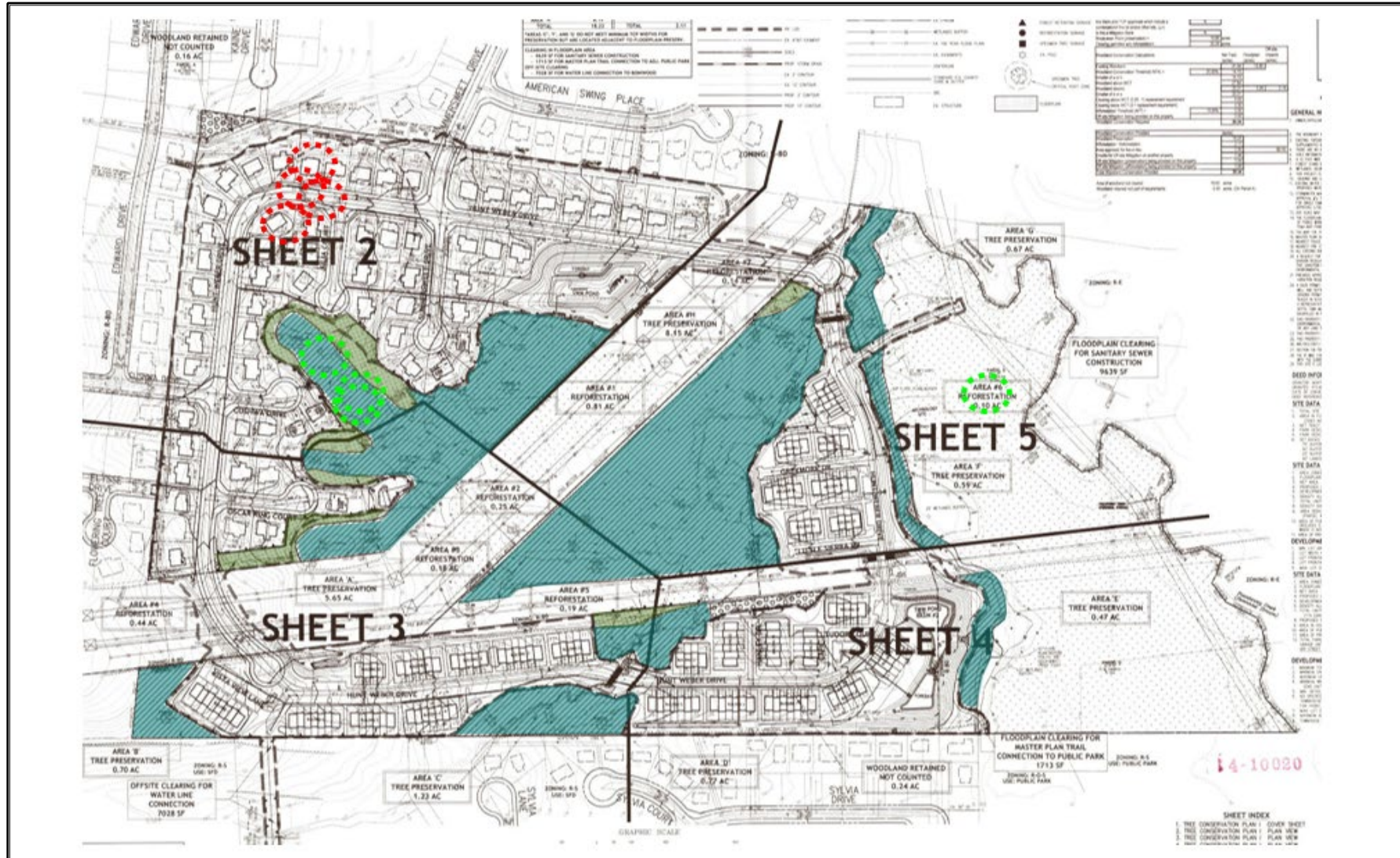
Proposed
master plan
trail

CRITICAL INTERSECTIONS



12/03/2021

TYPE 1 TREE CONSERVATION PLAN

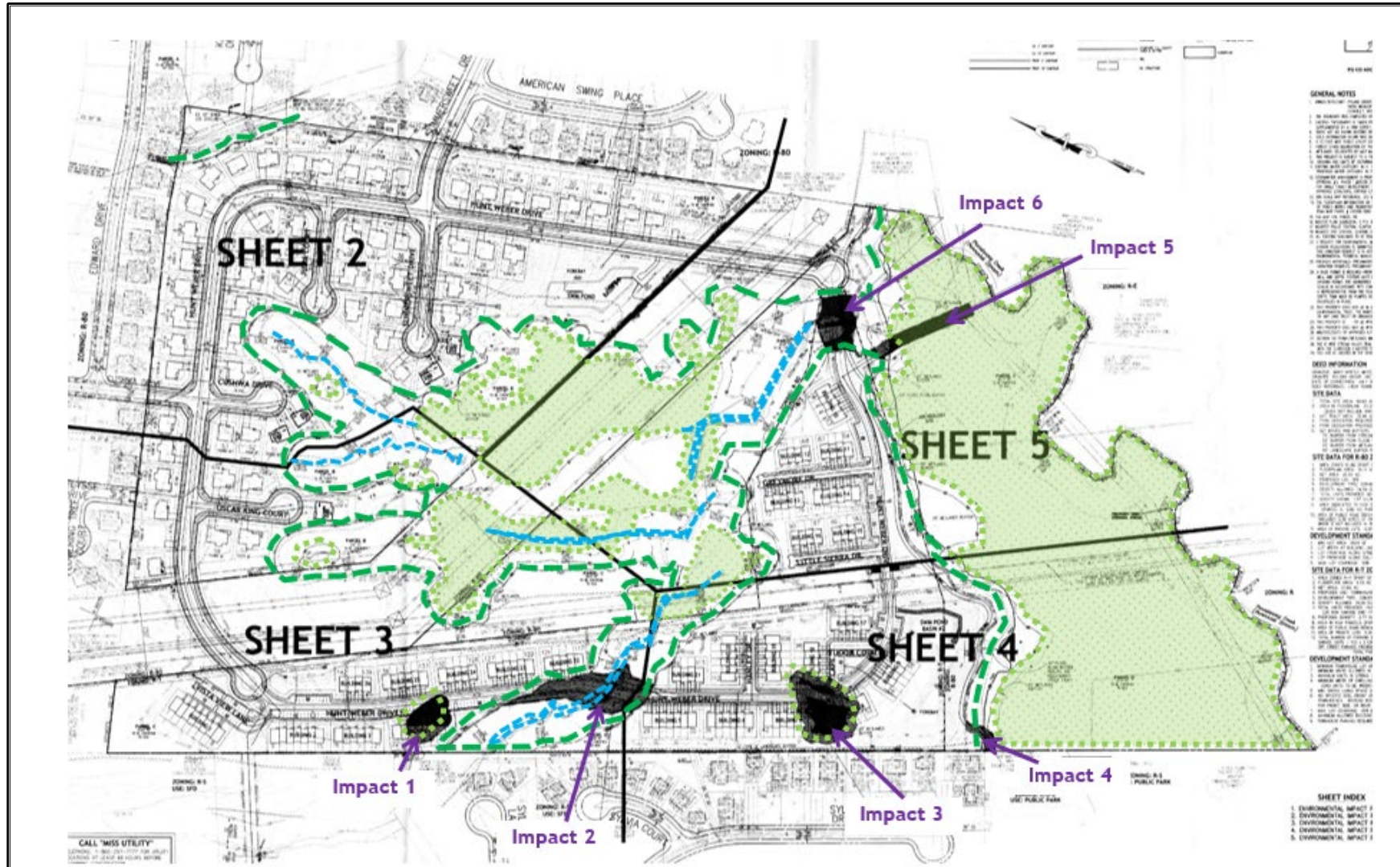


12/03/2021

ENVIRONMENTAL IMPACTS



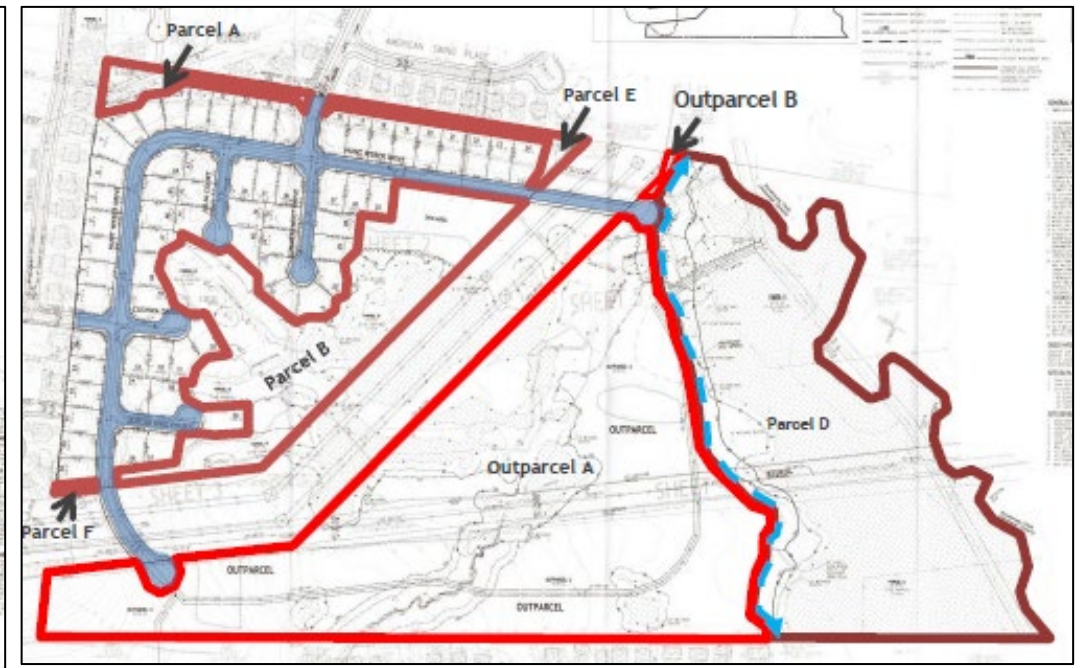
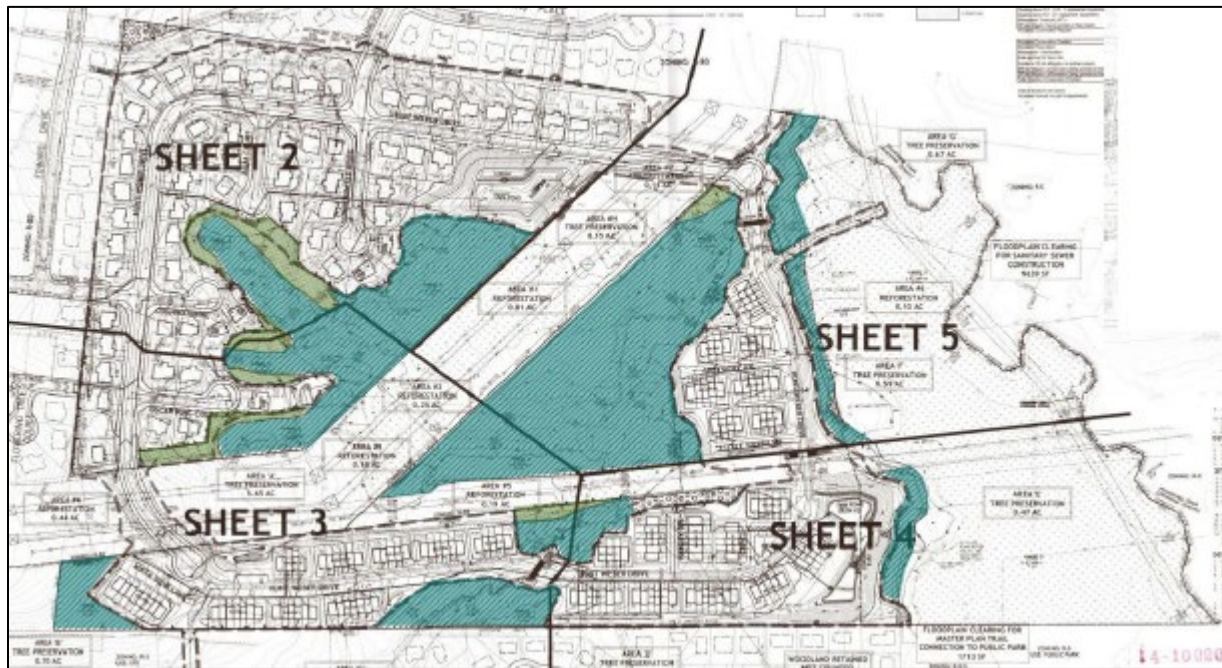
12/03/2021



PRELIMINARY PLAN & TREE CONSERVATION PLAN



12/03/2021



STAFF RECOMMENDATION

APPROVAL of Reconsideration

- Amend Condition 15f

Major Issues:

- None

Required Mailings:

- Notice to Previous Parties of Record
(**Applicant**): 12/13/2024
- Notice to Previous Parties of Record
(**M-NCPPC**): 12/31/2024