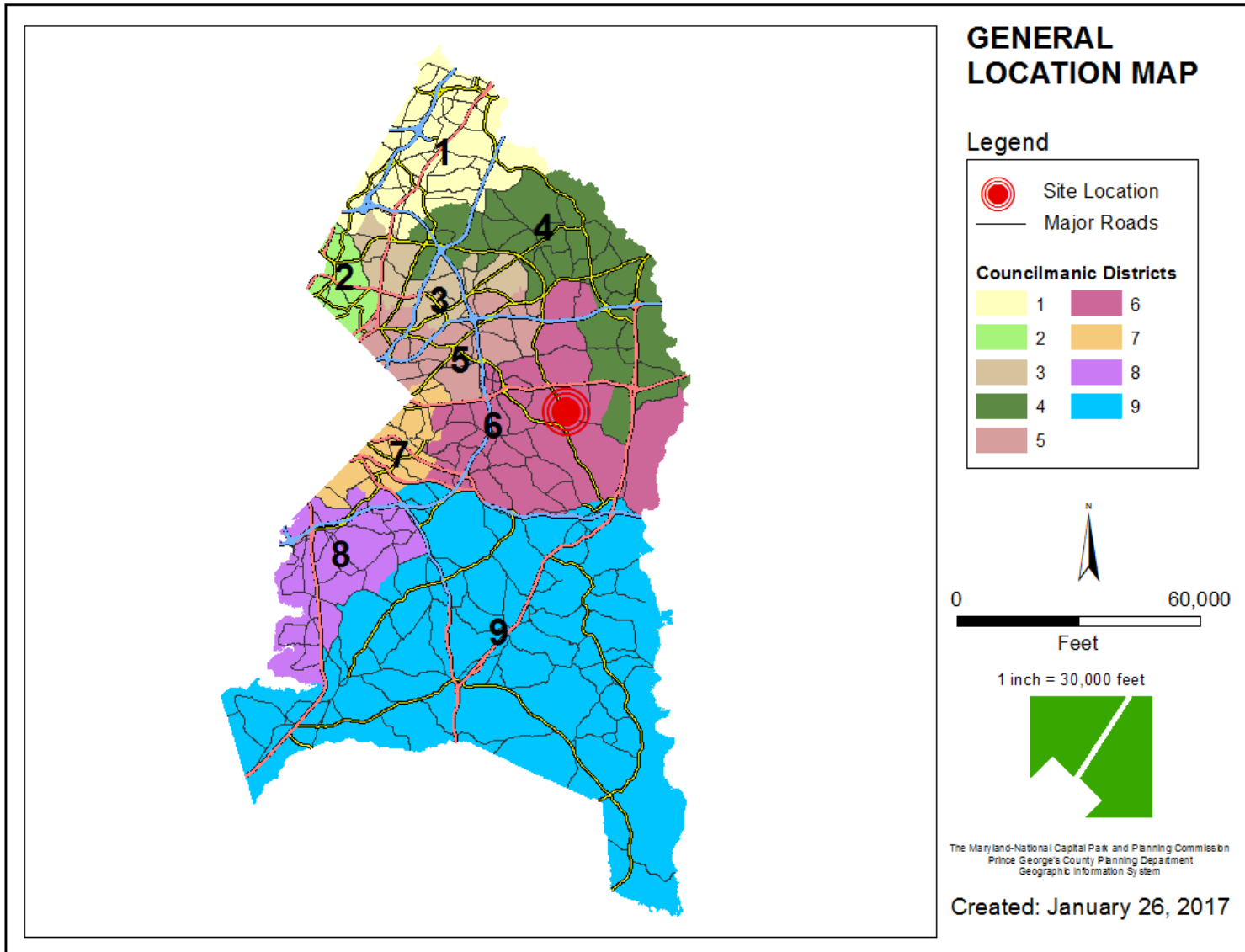


ITEM: 13

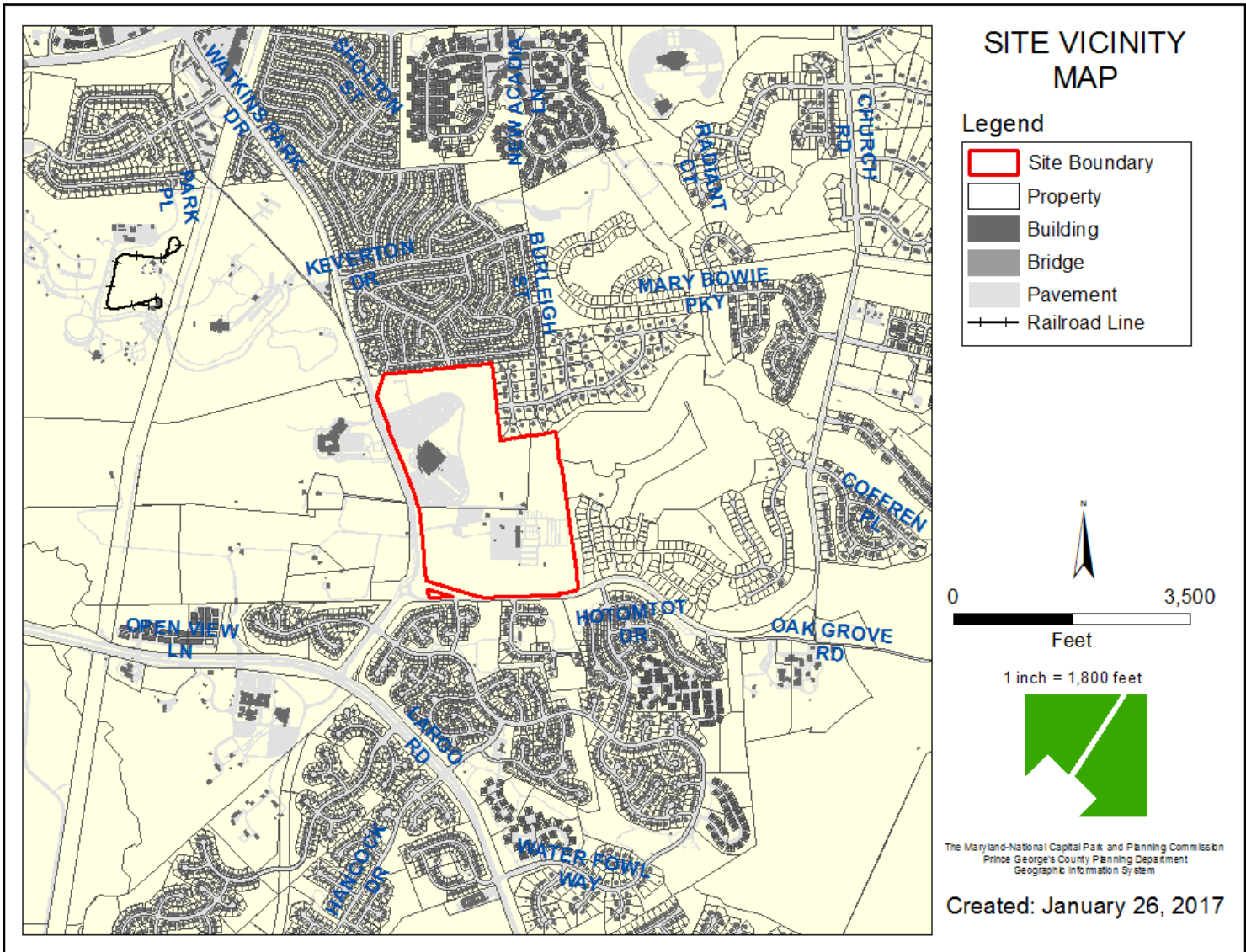
CASE: 4-13010

FIRST BAPTIST CHURCH OF GLENARDEN

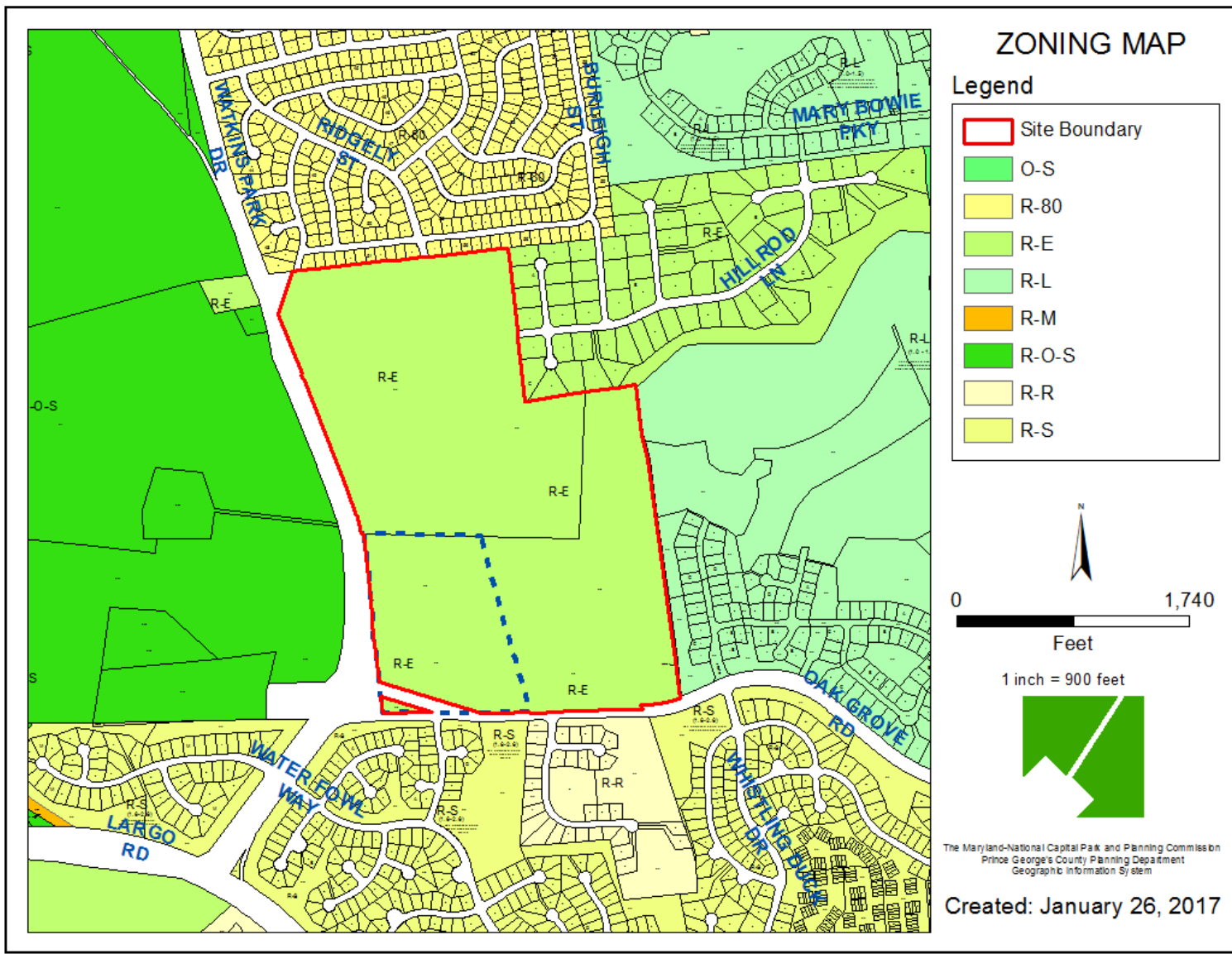
GENERAL LOCATION MAP



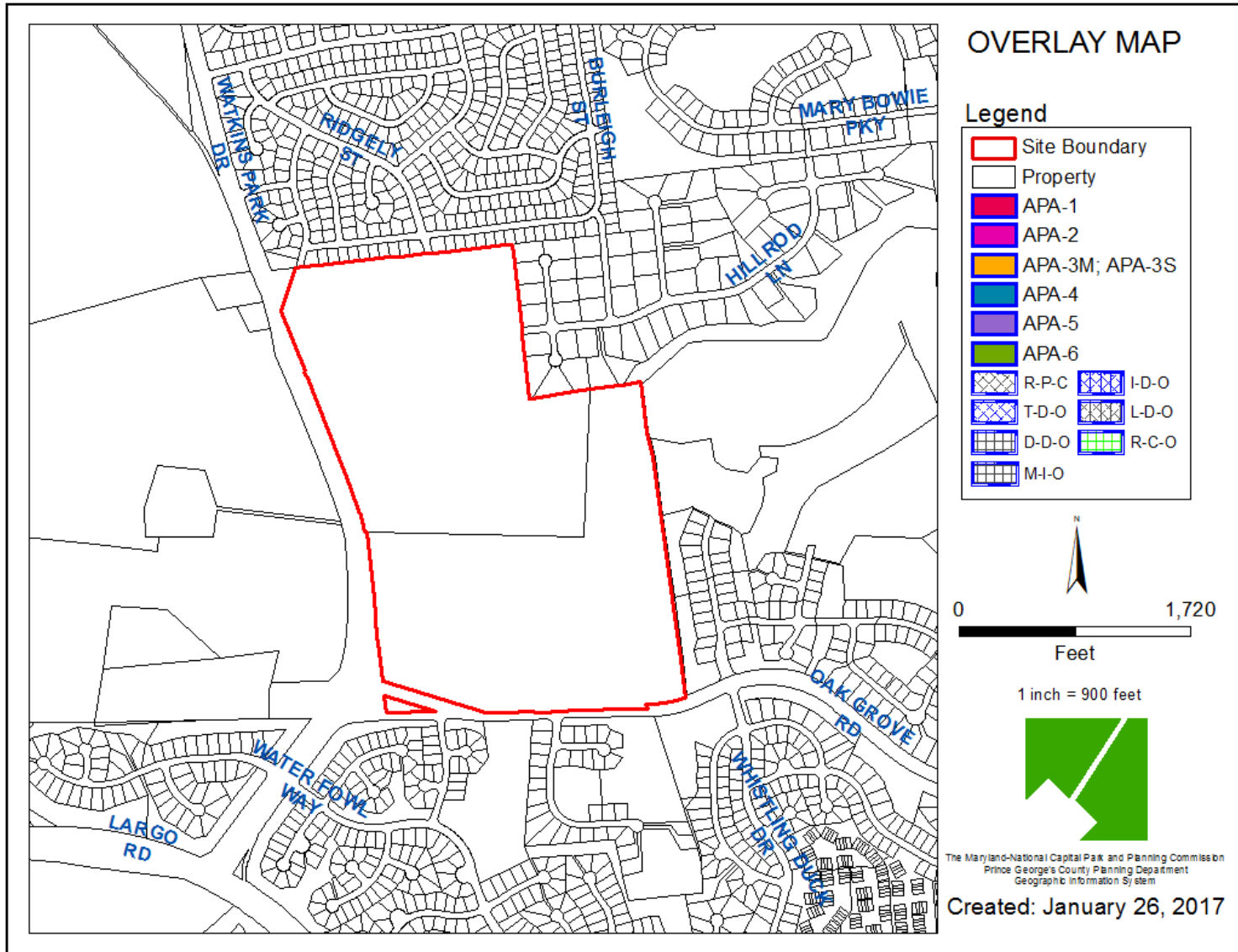
SITE VICINITY



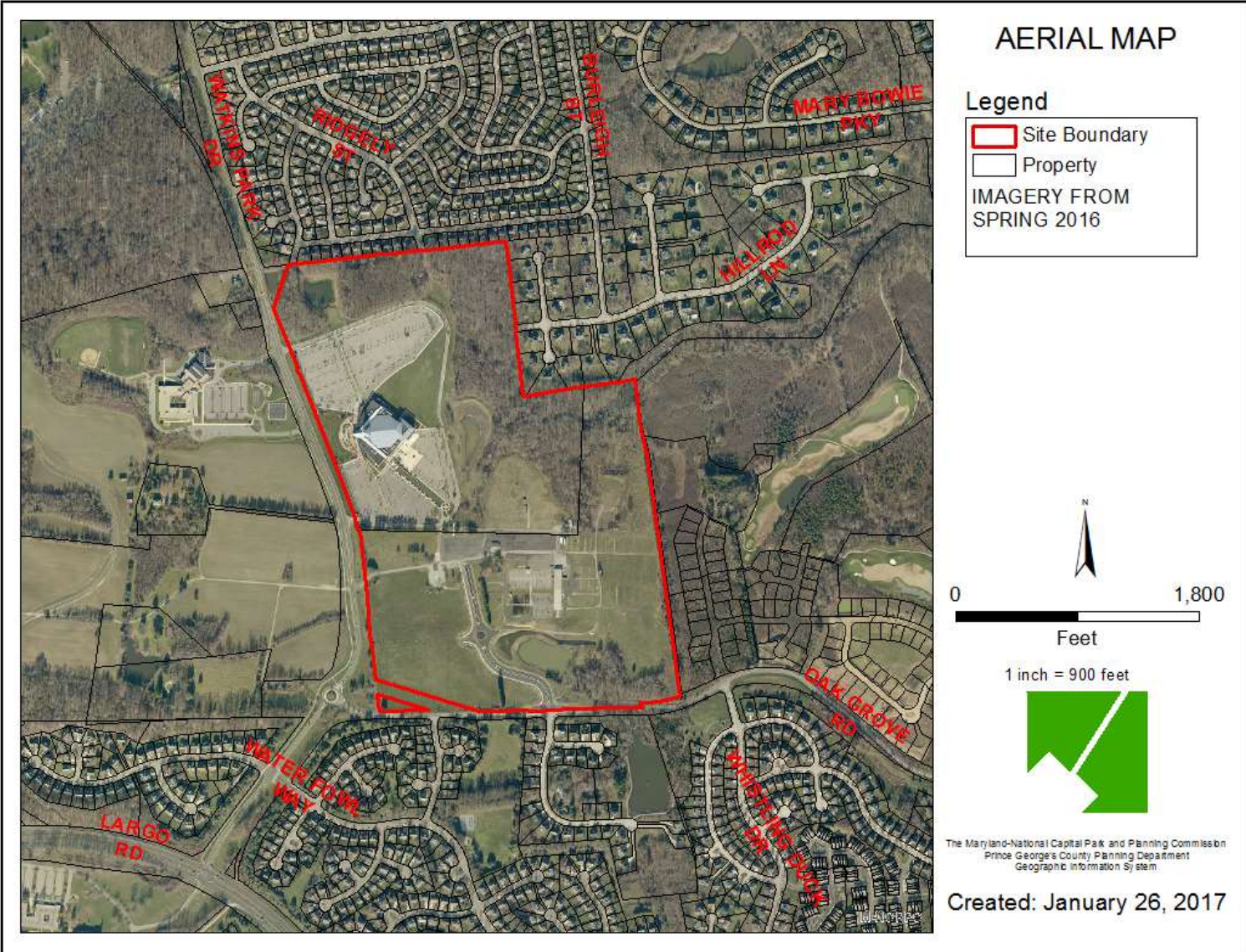
ZONING MAP



OVERLAY MAP



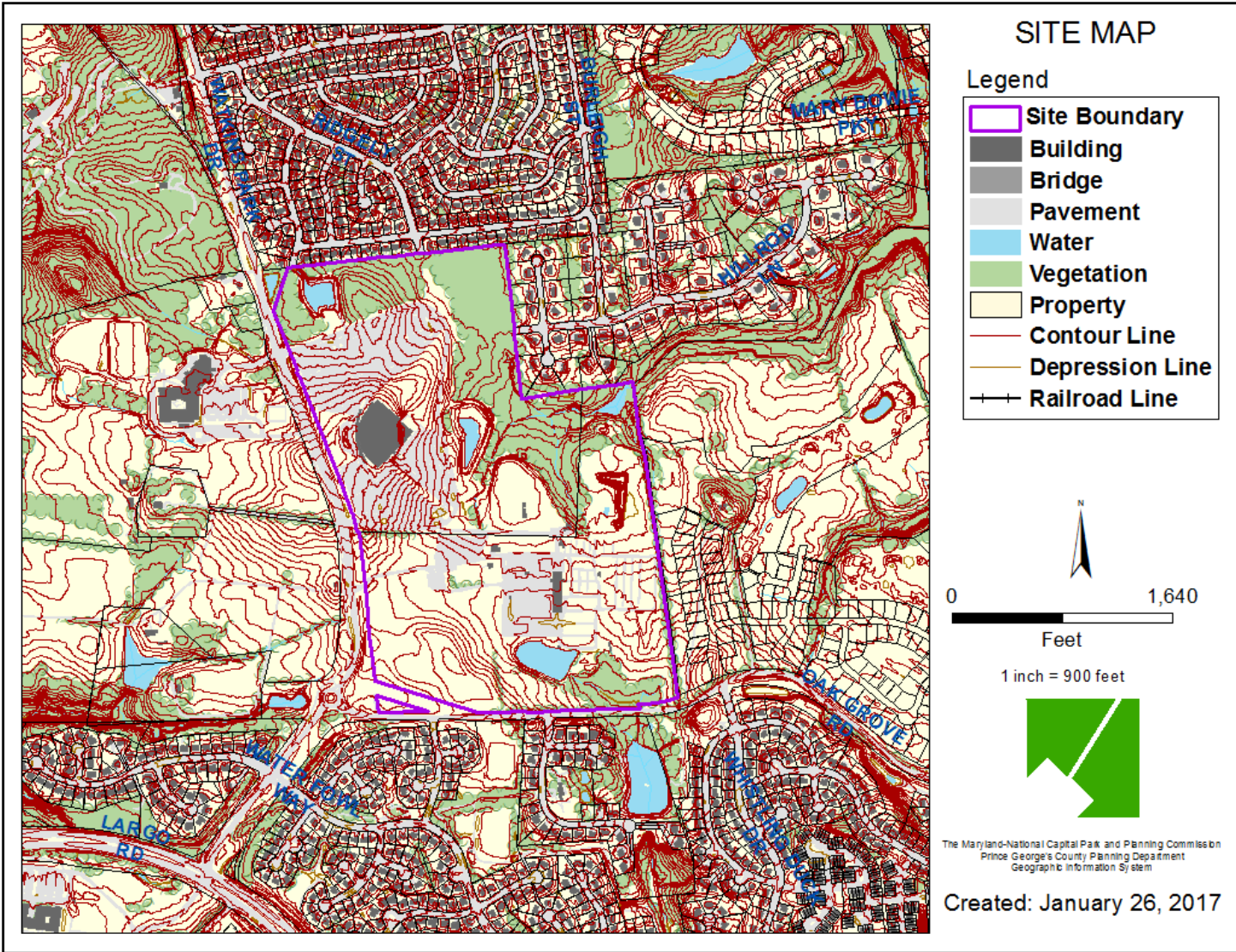
AERIAL MAP



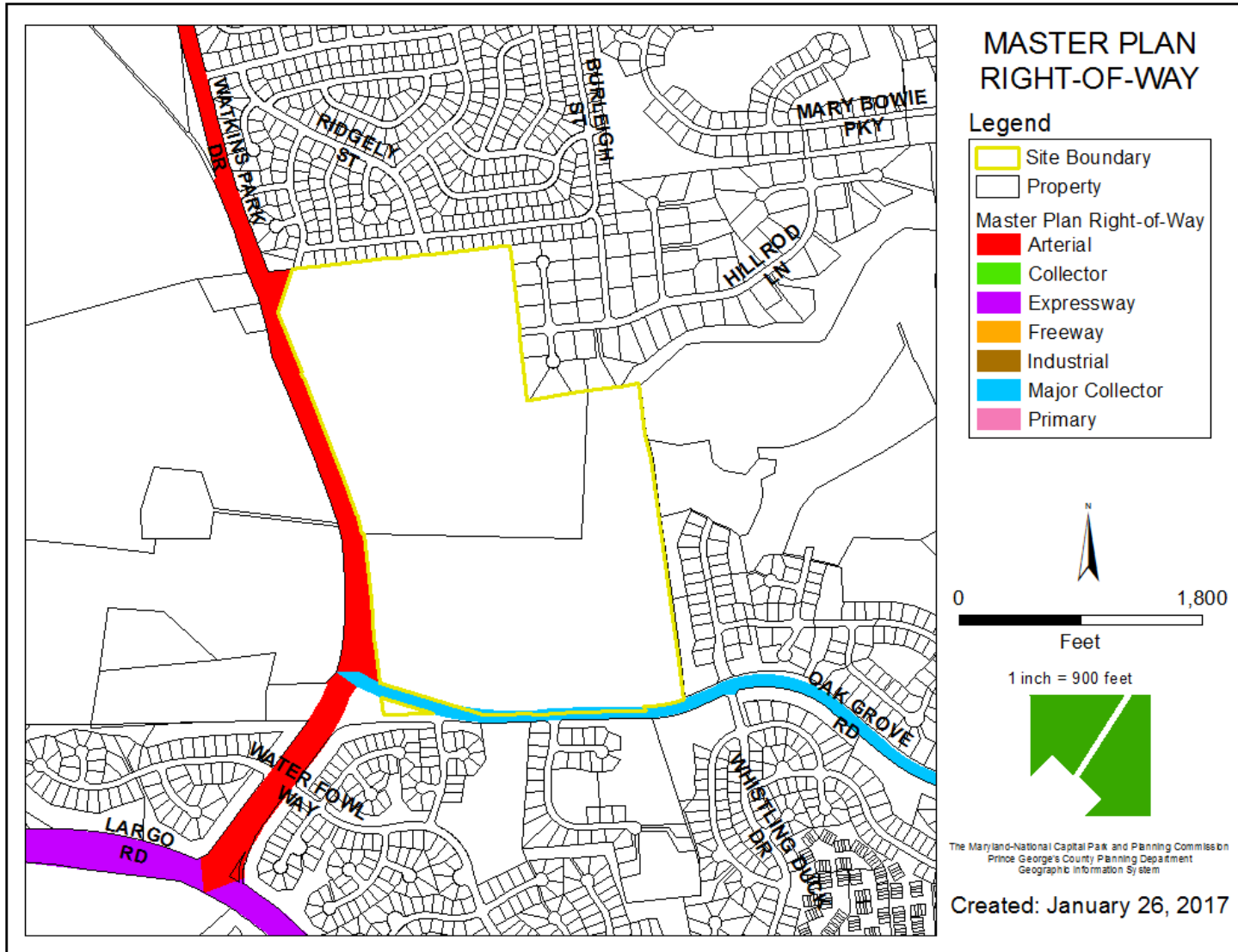
BIRD'S-EYE VIEW WITH APPROXIMATE SITE BOUNDARY OUTLINED



SITE MAP



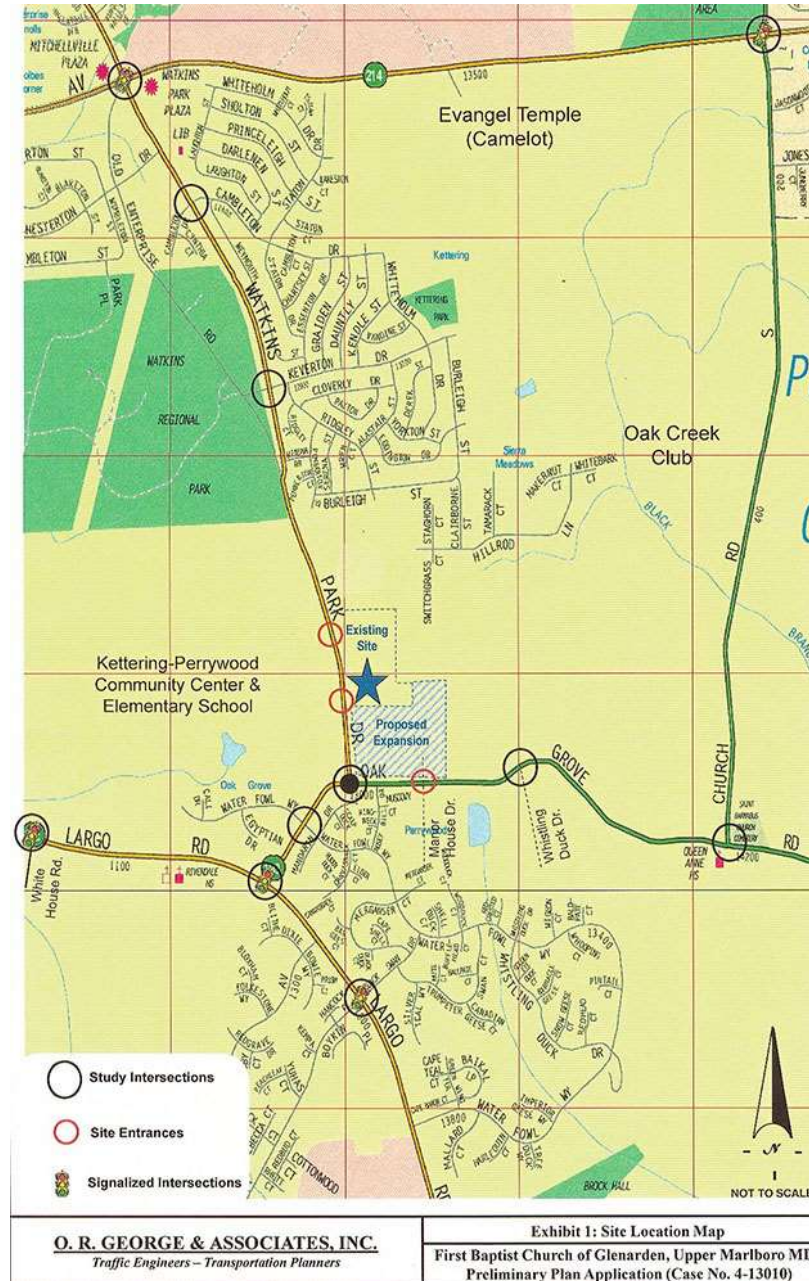
MASTER PLAN RIGHT-OF-WAY MAP



ACCESS VARIATION EXHIBIT

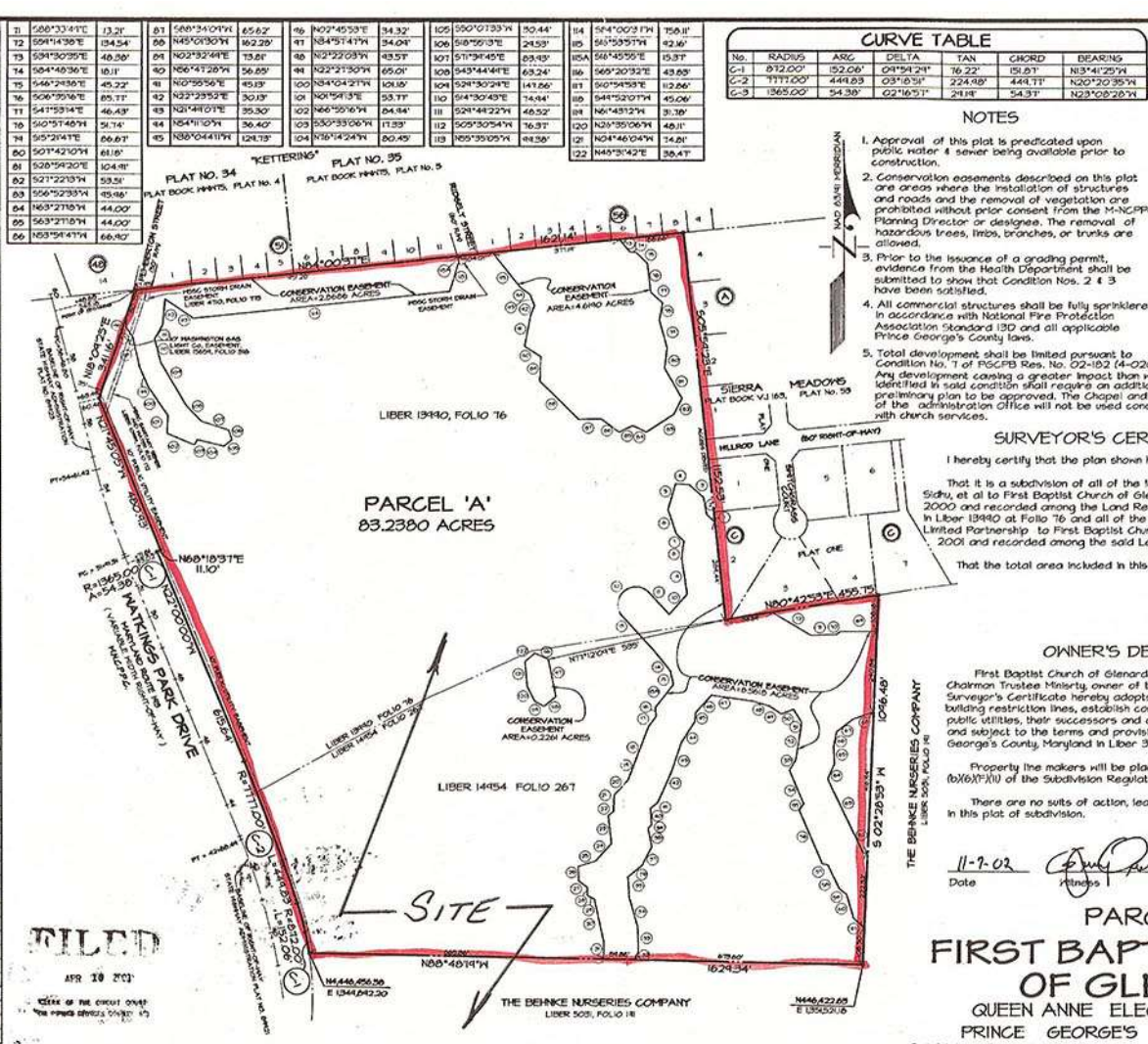


CRITICAL INTERSECTIONS

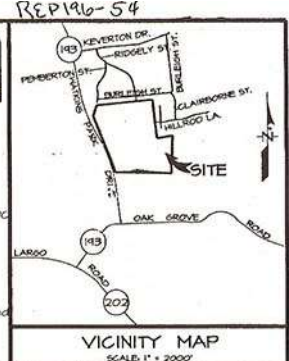


FINAL PLAT PARCEL A

| NO. | BEARING | LENGTH |
|-----|-------------|-----------|
| 1 | S44°20'01"E | 33.5' |
| 2 | S11°28'45"E | 52.3' |
| 3 | S45°38'13"E | 58.2' |
| 4 | S69°30'52"E | 40.12' |
| 5 | N4°28'52"E | 74.02' |
| 6 | N83°24'24"E | 74.5' |
| 7 | N45°01'24"E | 39.24' |
| 8 | N01°1'00"E | 50.40' |
| 9 | N08°12'24"E | 107.66' |
| 10 | N40°52'00"E | 80.50' |
| 11 | S41°51'43"E | 84.01' |
| 12 | R = 52.73' | L=166.40' |
| 13 | N41°51'43"E | 131.30' |
| 14 | N36°16'14"E | 76.26' |
| 15 | N1°51'24"E | 41.80' |
| 16 | N37°52'24"E | 85.56' |
| 17 | N04°31'42"E | 26.53' |
| 18 | N36°46'42"E | 31.09' |
| 19 | N21°02'24"E | 100.09' |
| 20 | N20°51'14"E | 66.41' |
| 21 | N43°45'14"E | 54.44' |
| 22 | N02°30'56"E | 50.81' |
| 23 | N24°33'32"E | 71.57' |
| 24 | N03°46'54"E | 84.26' |
| 25 | N42°31'01"E | 104.83' |
| 26 | N72°36'42"E | 53.30' |
| 27 | N02°45'54"E | 43.02' |
| 28 | N53°18'05"E | 32.43' |
| 29 | N00°54'31"E | 23.34' |
| 30 | N61°31'46"E | 23.00' |
| 31 | N12°21'04"E | 127.81' |
| 32 | N01°42'32"E | 52.46' |
| 33 | S23°18'05"E | 29.07' |
| 34 | S02°11'35"E | 71.39' |
| 35 | S04°23'23"E | 71.79' |
| 36 | S03°00'44"E | 60.80' |
| 37 | S44°35'55"E | 52.57' |
| 38 | S21°48'40"E | 61.47' |
| 39 | S10°44'31"E | 51.68' |
| 40 | S45°40'54"E | 13.44' |
| 41 | S03°32'44"E | 50.09' |
| 42 | S52°08'57"E | 25.30' |
| 43 | S24°03'58"E | 102.53' |
| 44 | S65°50'02"E | 60.27' |
| 45 | S21°46'24"E | 64.80' |
| 46 | S01°30'09"E | 26.34' |
| 47 | S41°51'21"E | 61.26' |
| 48 | N01°12'29"E | 50.11' |
| 49 | N36°16'23"E | 42.45' |
| 50 | S64°16'53"E | 36.35' |
| 51 | N31°04'07"E | 46.44' |
| 52 | N04°55'54"E | 281.38' |
| 53 | N07°23'14"E | 36.66' |
| 54 | N21°55'55"E | 106.64' |
| 55 | N03°14'52"E | 23.64' |
| 56 | N21°54'44"E | 112.07' |
| 57 | N75°32'36"E | 16.50' |
| 58 | N25°41'40"E | 76.40' |
| 59 | S03°03'36"E | 26.18' |
| 60 | N04°04'19"E | 12.41' |
| 61 | N47°02'44"E | 43.58' |
| 62 | N64°39'44"E | 15.00' |
| 63 | S29°11'50"E | 244.67' |
| 64 | S29°41'00"E | 46.02' |
| 65 | S02°08'44"E | 51.06' |
| 66 | S10°34'54"E | 43.44' |
| 67 | S02°22'22"E | 61.34' |
| 68 | S10°25'29"E | 63.85' |
| 69 | N64°47'44"E | 105.88' |
| 70 | N54°11'02"E | 6.40' |



| No. | RADIUS | ARC | DELTA | TAN | CHORD | BEARING |
|-----|----------|---------|-----------|---------|---------|-------------|
| G-1 | 812.00' | 52.06' | 04°54'21" | 76.22' | 151.87' | N3°41'25"E |
| G-2 | 7177.25' | 444.83' | 03°45'51" | 224.84' | 444.77' | N00°20'35"E |
| G-3 | 1362.00' | 54.38' | 02°16'51" | 24.18' | 54.37' | N23°08'20"E |



- NOTES**
- Approval of this plat is predicated upon public water 4 sewer being available prior to construction.
 - Conservation easements described on this plat are areas where the installation of structures and roads and the removal of vegetation are prohibited without prior consent from the M-NCPPC Planning Director or designee. The removal of hazardous trees, limbs, branches, or trunks are allowed.
 - Prior to the issuance of a grading permit, evidence from the Health Department shall be submitted to show that Condition Nos. 2 & 3 have been satisfied.
 - All commercial structures shall be fully sprinklered in accordance with National Fire Protection Association standards ISD and all applicable Prince George's County laws.
 - Total development shall be limited pursuant to Condition No. 7 of PGPCP Res. No. 02-182 (4-0204). Any development causing a greater impact than what is identified in said condition shall require an additional preliminary plan to be approved. The Chapel and 50% of the administration office will not be used concurrent with church services.
 - Prior to issuance of any building permits, road improvements specified in Condition No. 8 of PGPCP Res. No. 02-182 shall be completed with.

SURVEYOR'S CERTIFICATE

I hereby certify that the plan shown hereon is correct;

That it is a subdivision of all of the land conveyed by Rajinder Singh Sidhu, et al to First Baptist Church of Glenarden, Inc. by deed dated August 7, 2000 and recorded among the Land Records of Prince George's County, Maryland in Liber 13880 at Folio 76 and all of the land conveyed by Commercial Properties Limited Partnership to First Baptist Church of Glenarden, Inc. by deed dated August 22, 2001 and recorded among the said Land Records in Liber 14154 at Folio 267.

That the total area included in this plan of subdivision is 83.2380 acres.

David S. Gentry
David S. Gentry
Professional Land Surveyor
Maryland No. 10804

OWNER'S DEDICATION

First Baptist Church of Glenarden, Inc., a Maryland Corporation, by John S. Terry, Chairman Trustee Ministry, owner of the property shown hereon and described in the Surveyor's Certificate hereby adopts this plan of subdivision, establishes the minimum building restriction lines, establishes conservation easements as shown, and grants the public utilities, their successors and assigns, a ten (10) foot utility easement as shown, and subject to the terms and provisions recorded among the Land Records of Prince George's County, Maryland in Liber 3103 at Folio 74b.

Property the makers will be placed in accordance with Section 24-120 (b)(6)(F)(ii) of the Subdivision Regulations, Prince George's County Code.

There are no suits of action, leases, liens, or trusts on the property included in this plot of subdivision.

First Baptist Church of Glenarden, Inc. (SEAL)
Date: 11-7-02
Attest: *John S. Terry*
John S. Terry, Chairman Trustee Ministry

PARCEL 'A'
FIRST BAPTIST CHURCH OF GLENARDEN
QUEEN ANNE ELECTION DISTRICT No. 7
PRINCE GEORGE'S COUNTY, MARYLAND
SCALE: 1" = 200'
NOVEMBER, 2002

FOR PUBLIC WATER AND SEWER SYSTEMS ONLY

THE MARYLAND-NATIONAL CAPITAL PARK AND PLANNING COMMISSION
PRINCE GEORGE'S COUNTY PLANNING BOARD

APPROVED: *Mechael J. Rooks*
James P. Gustin
M.N.C.P.P.C. RECORD FILE No. 5-04631

DEPT. OF ENVIRONMENTAL RESOURCES
PRINCE GEORGE'S COUNTY, MARYLAND

APPROVED: *L. R. 03*
Shirley Conway
DIRECTOR OR DESIGNEE

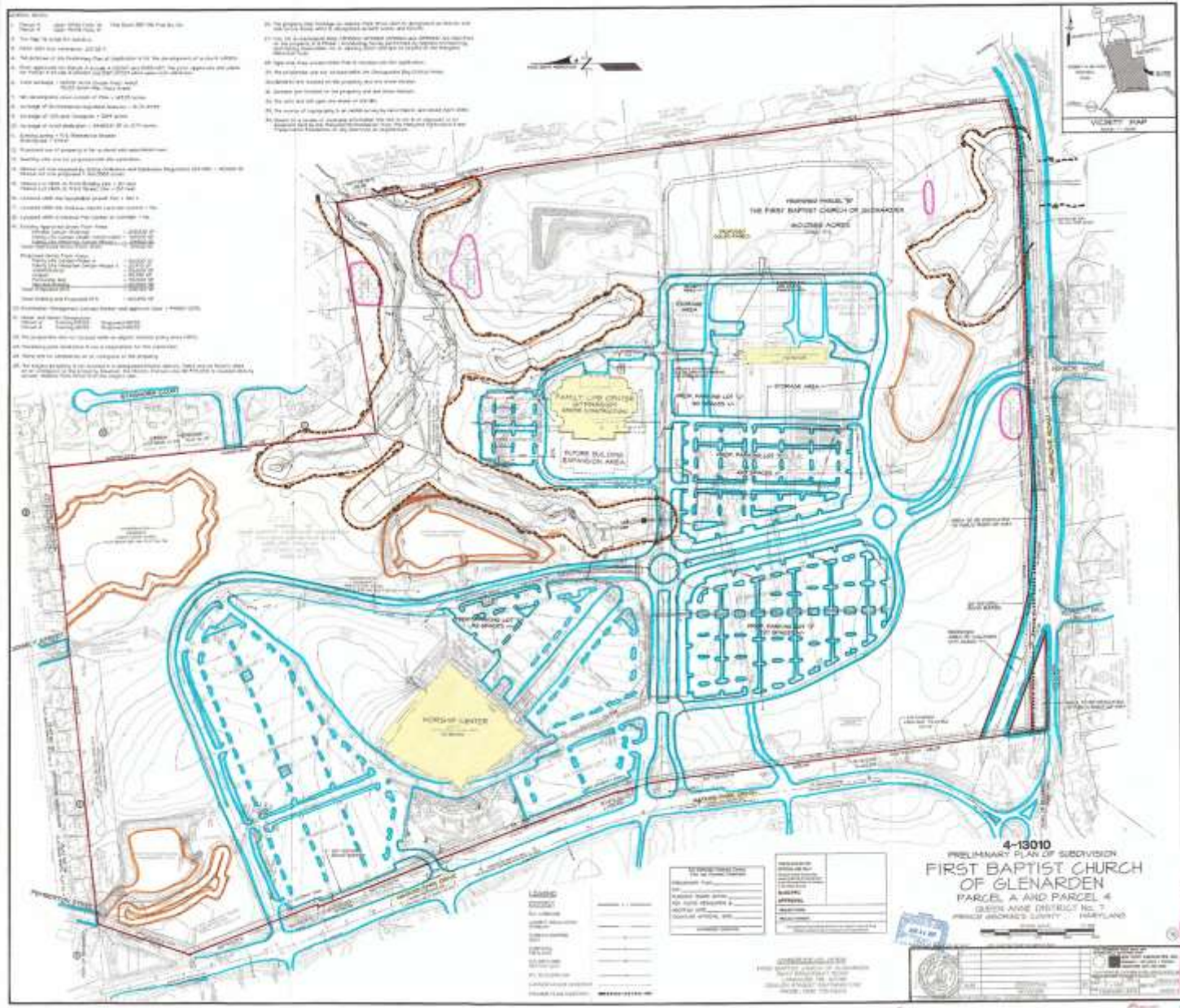
RECORDED: 4-10-03
PLAT BOOK: REP196
PLAT NO: 54
PRELIMINARY PLAN No. 4-02047 201511

BEN DYER ASSOCIATES, INC.
ENGINEERS - SURVEYORS
1121 WOODMORE ROAD, SUITE 200
MITCHELLVILLE, MARYLAND 20712
PHONE: (301) 430-2000

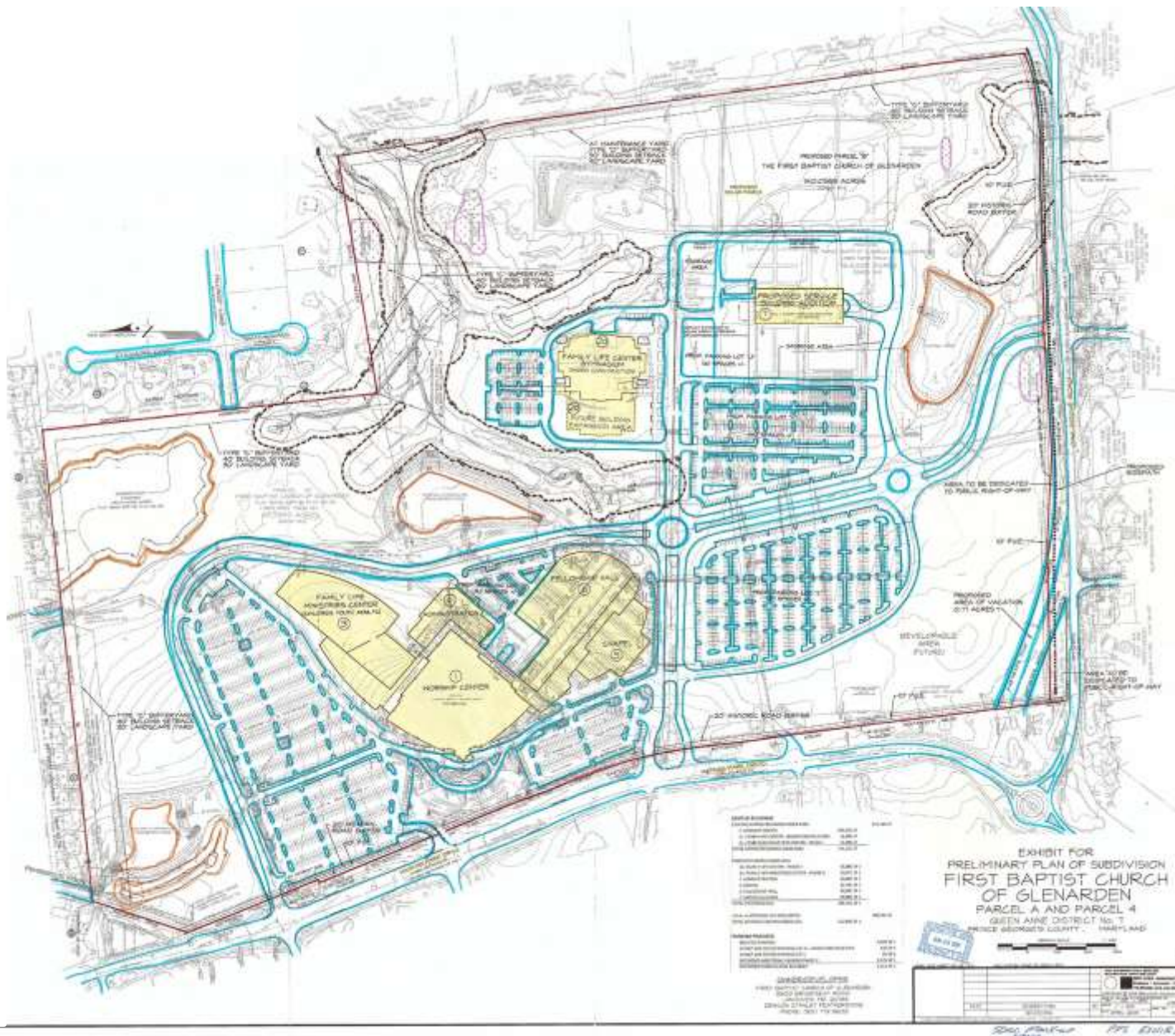
J-BOO028



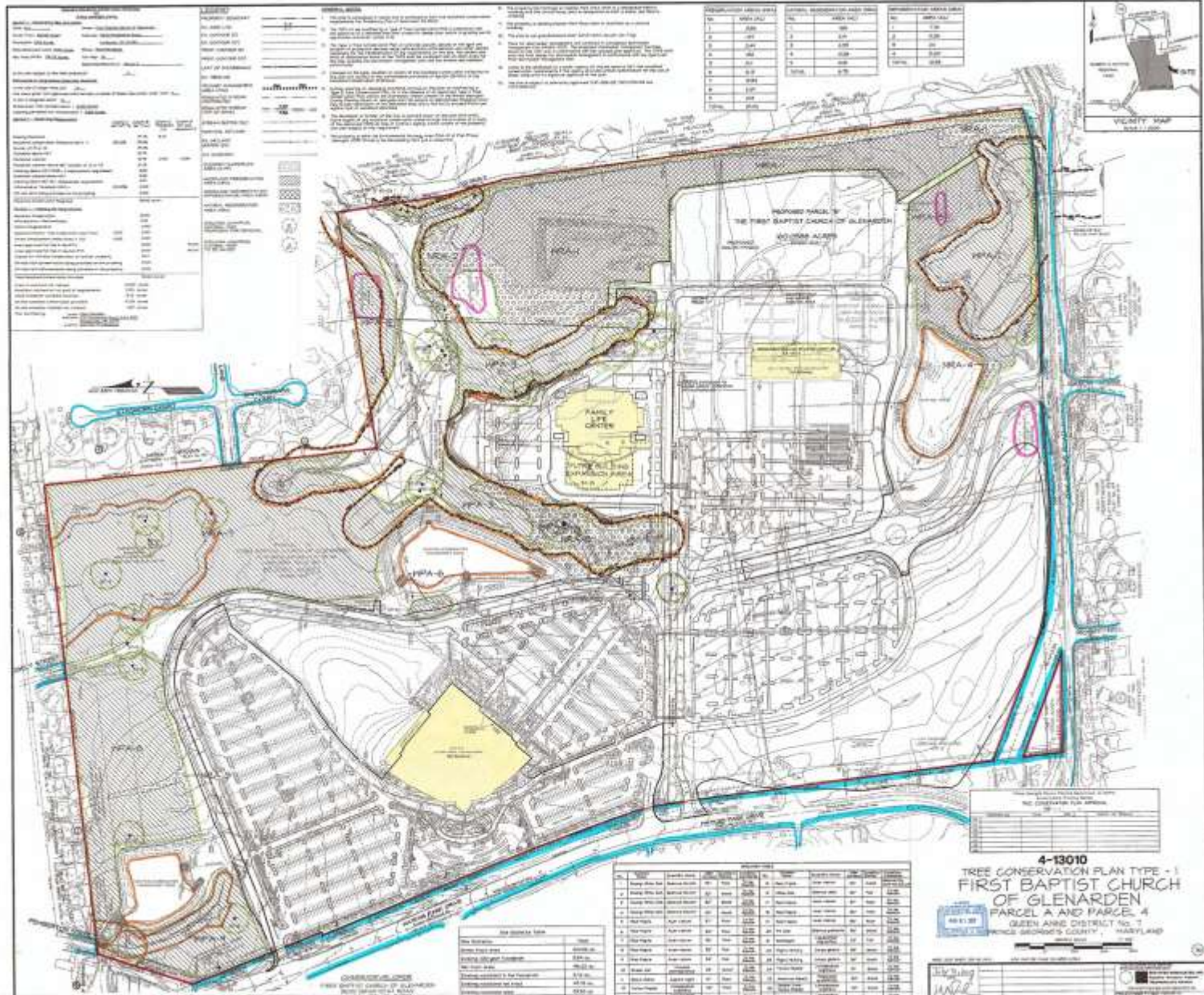
PRELIMINARY PLAN



PRELIMINARY PLAN EXHIBIT



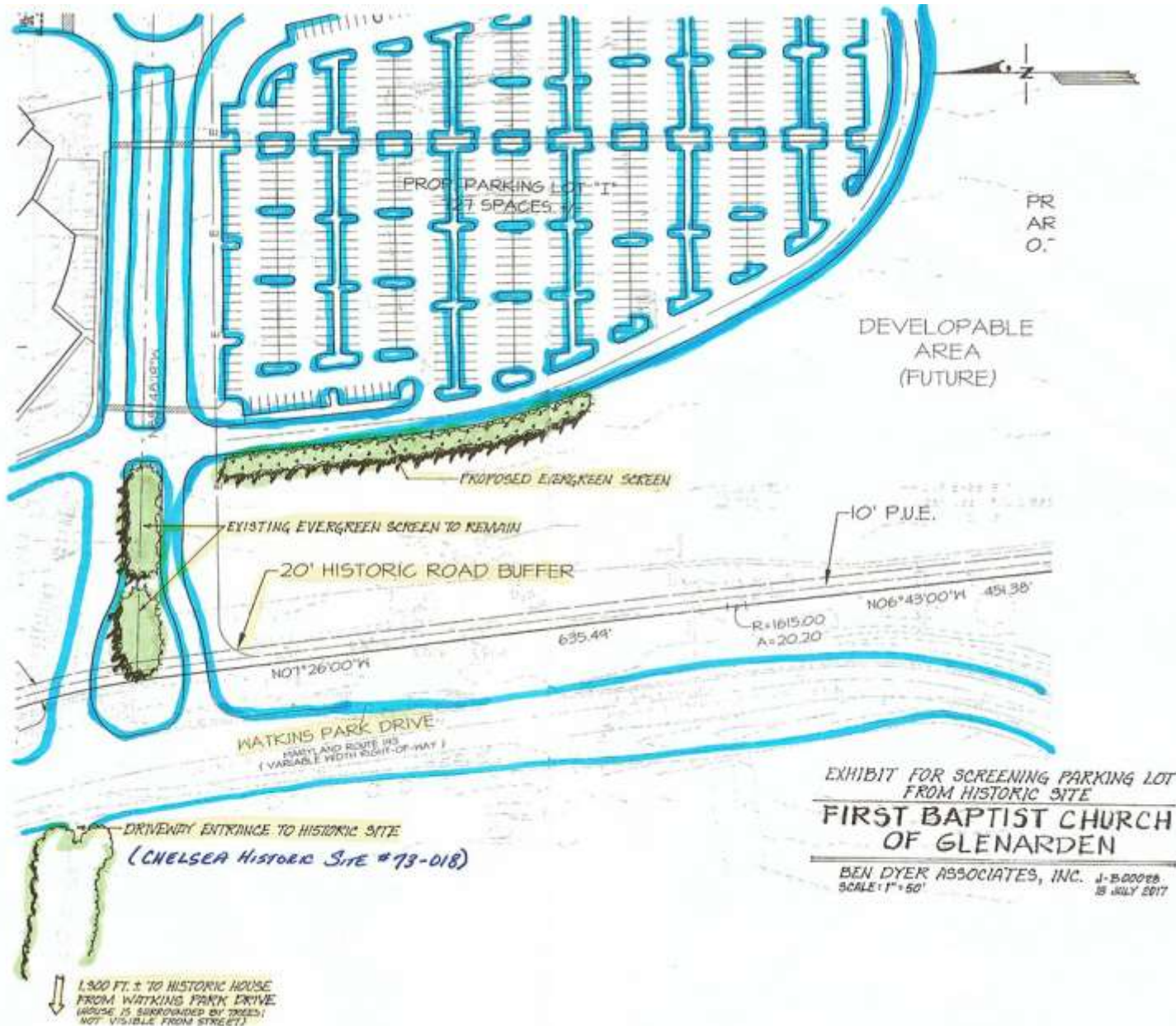
TYPE 1 TREE CONSERVATION PLAN



ADDITIONAL SIDEWALK RECOMMENDATIONS EXHIBIT



HISTORIC PRESERVATION COMMISSION EXHIBIT



CAMPUS PLAN

