

ITEM: 7

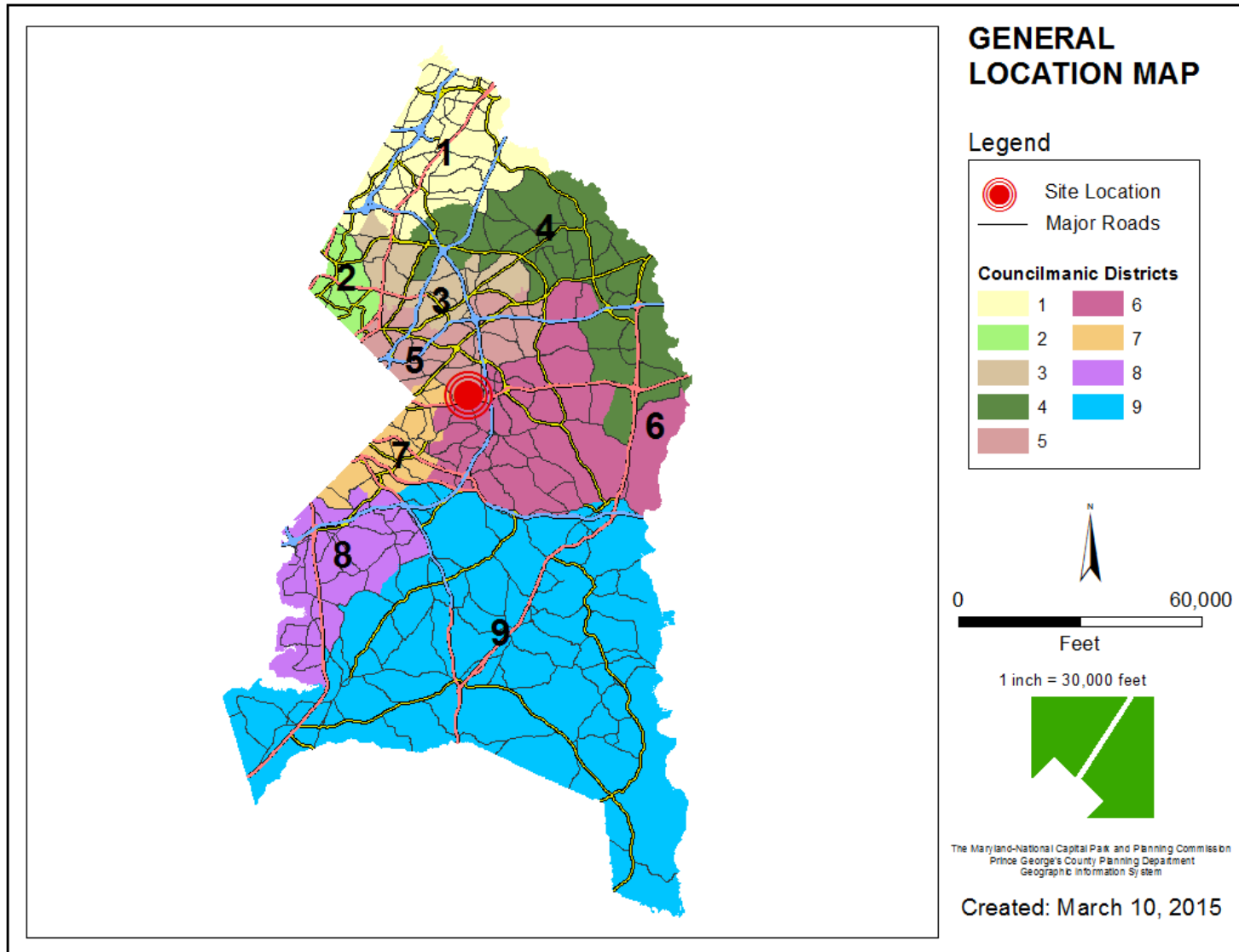
CASE: 4-14001

**SUMMERFIELD AT MORGAN STATION
PHASE 3
EXTENSION REQUEST**

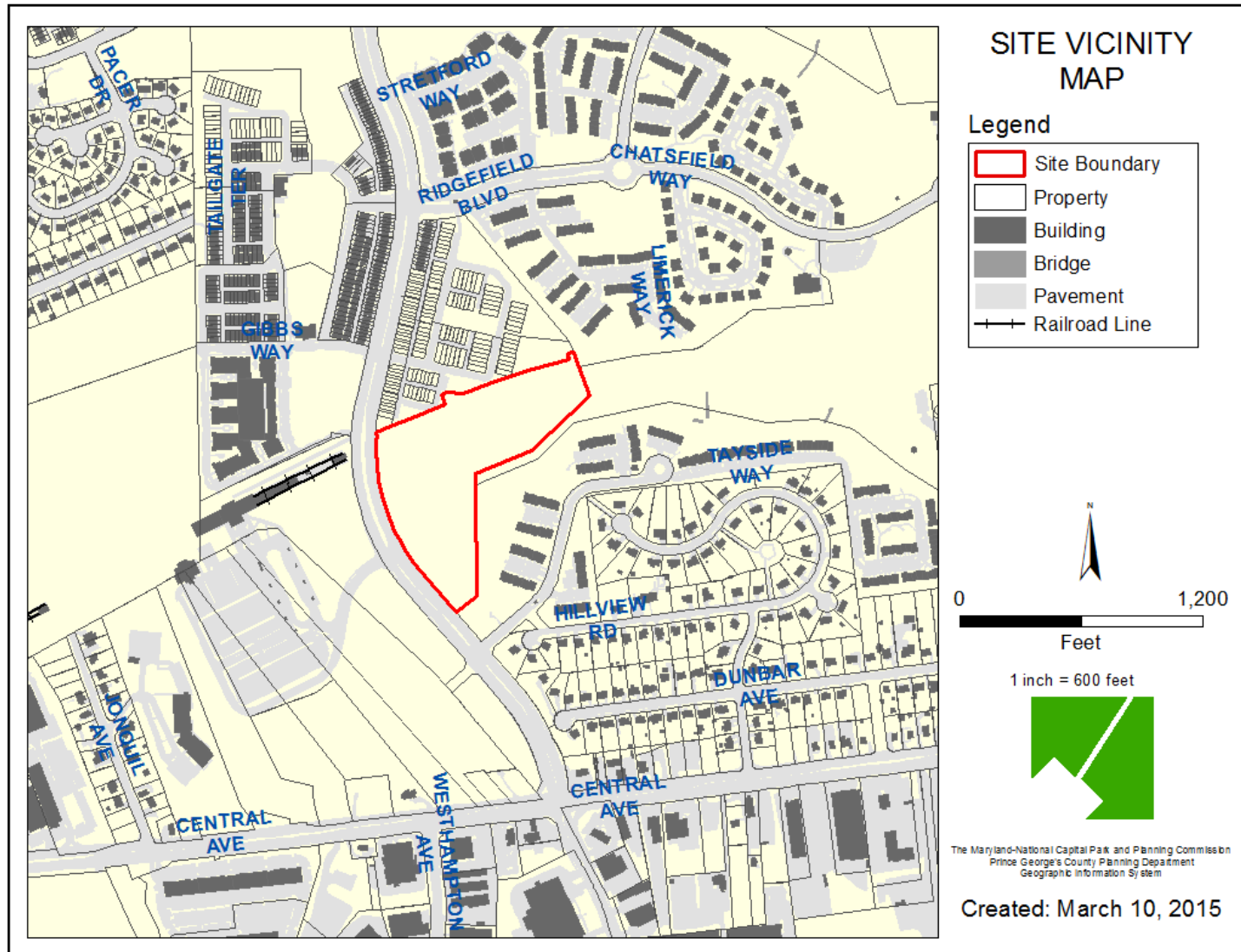
THE PRINCE GEORGE'S COUNTY PLANNING DEPARTMENT



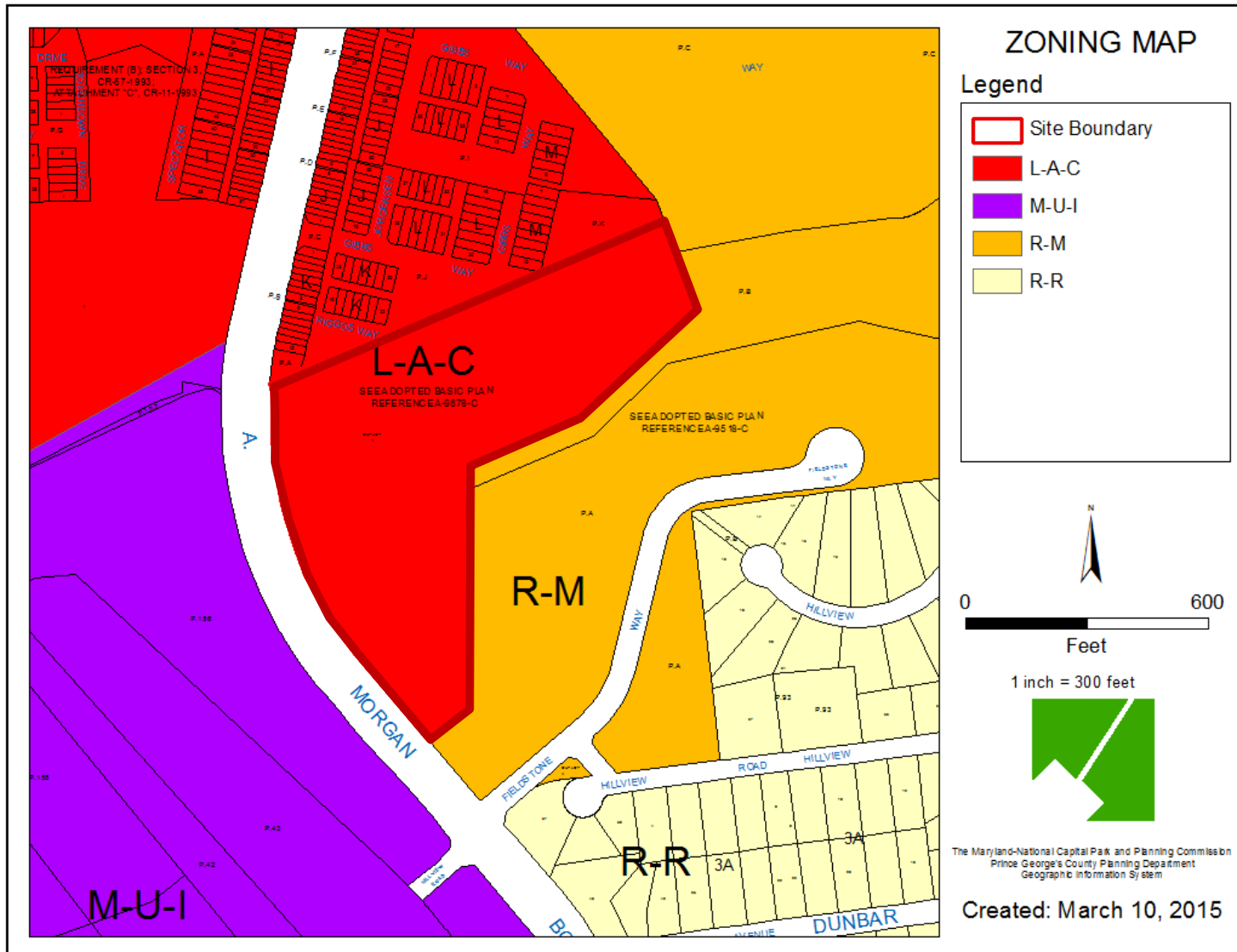
GENERAL LOCATION MAP



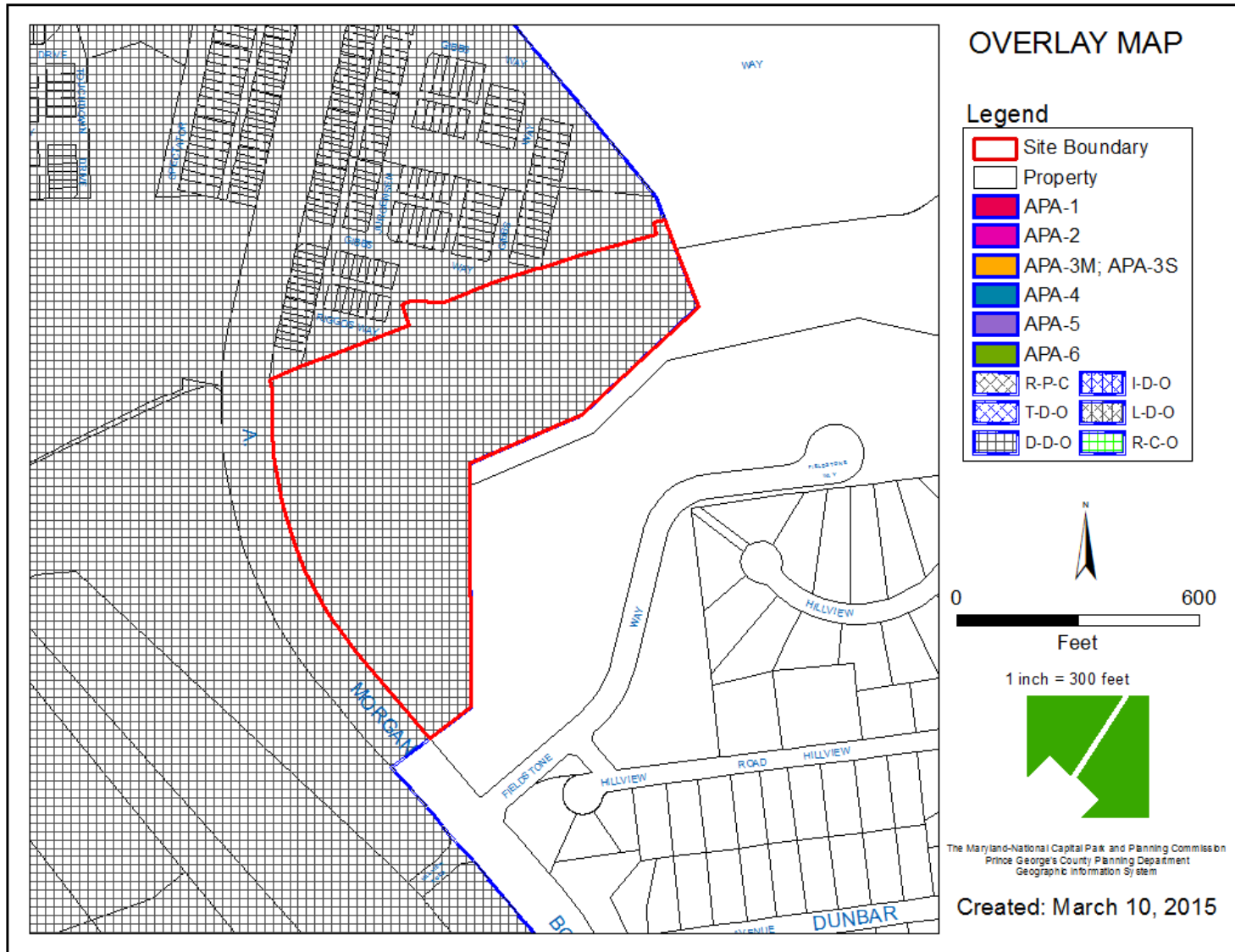
SITE VICINITY



ZONING MAP



OVERLAY MAP



CRITICAL INTERSECTIONS



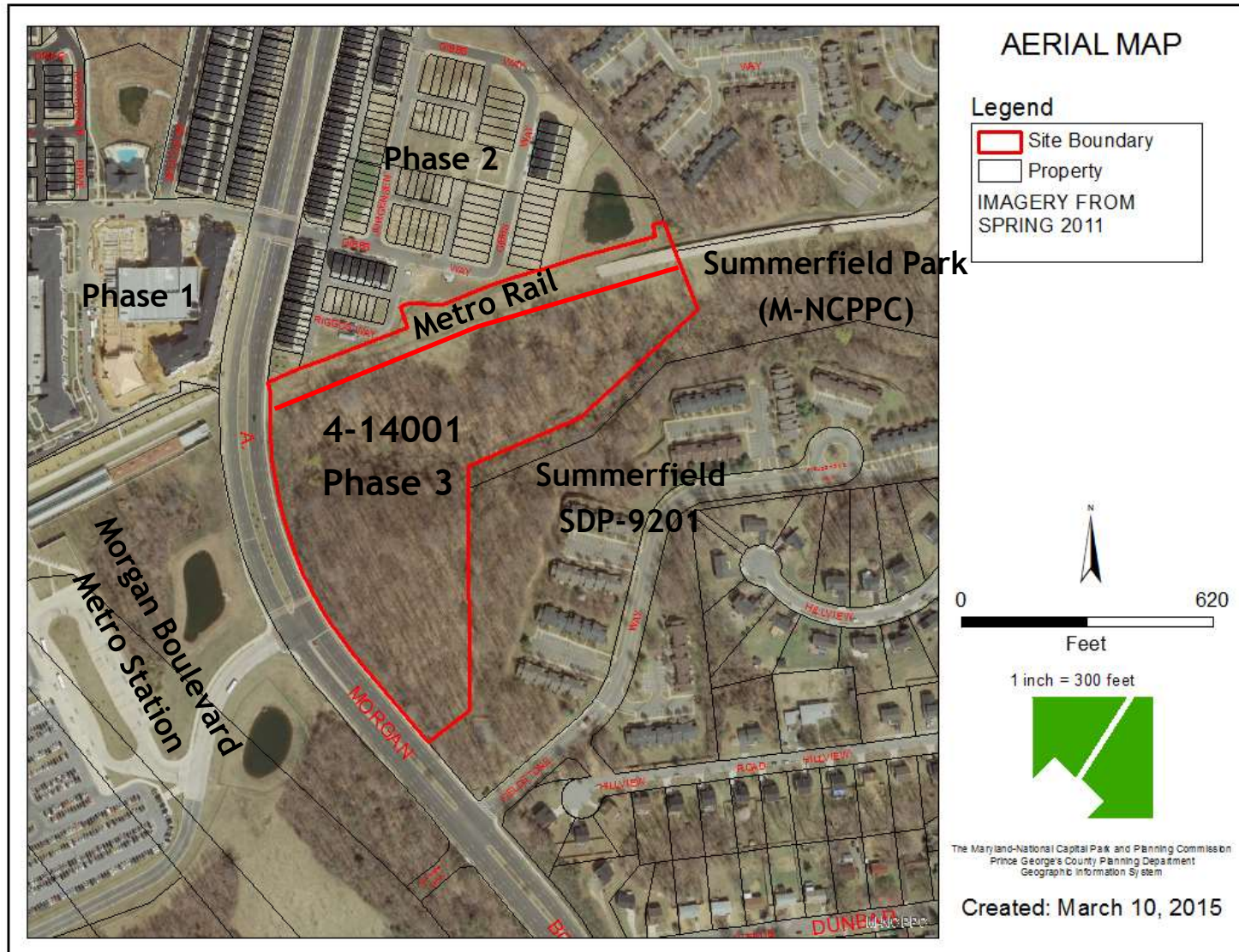
SURROUNDING NEIGHBORHOOD



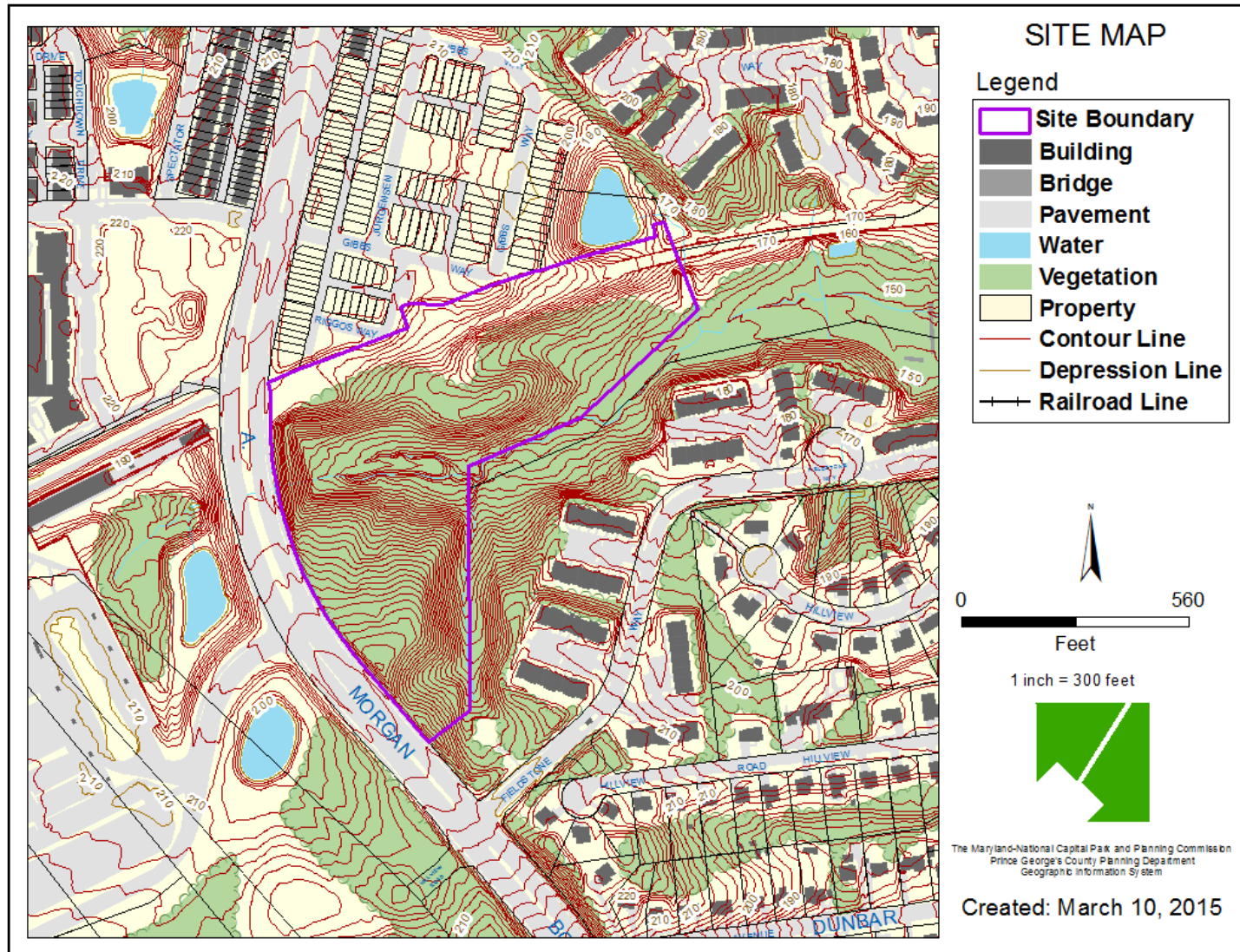
CDP-0301: ILLUSTRATIVE SITE PLAN



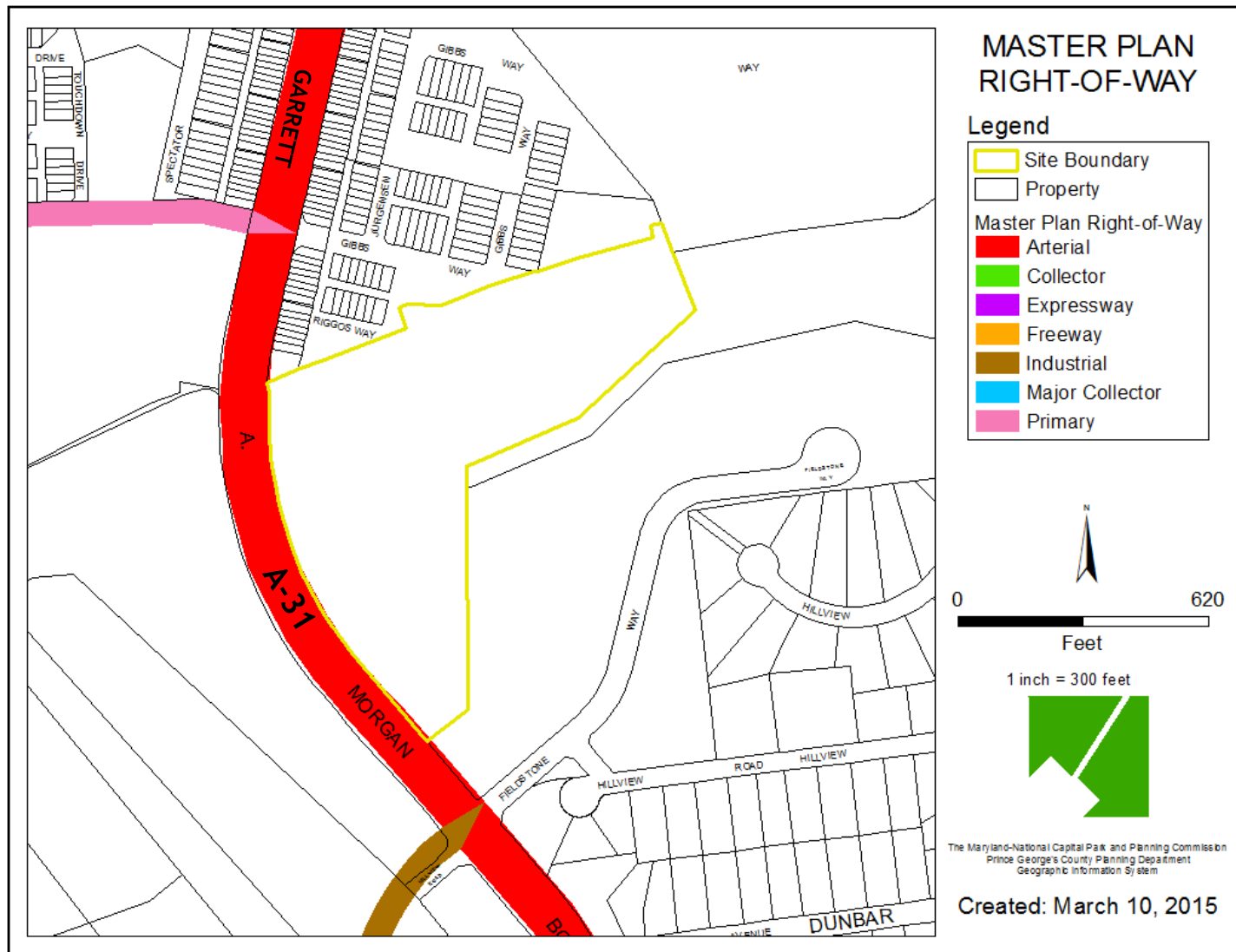
AERIAL MAP



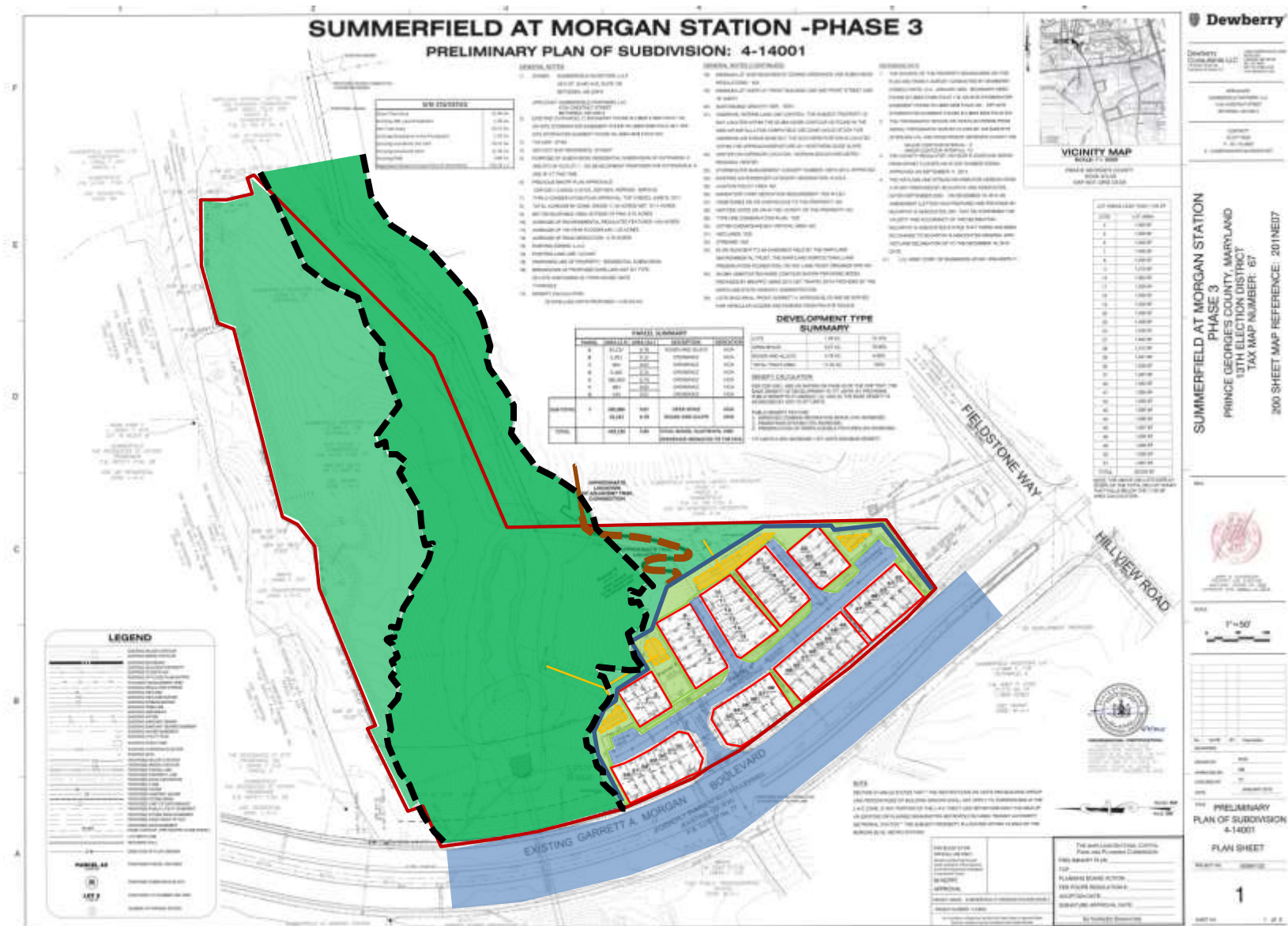
SITE MAP



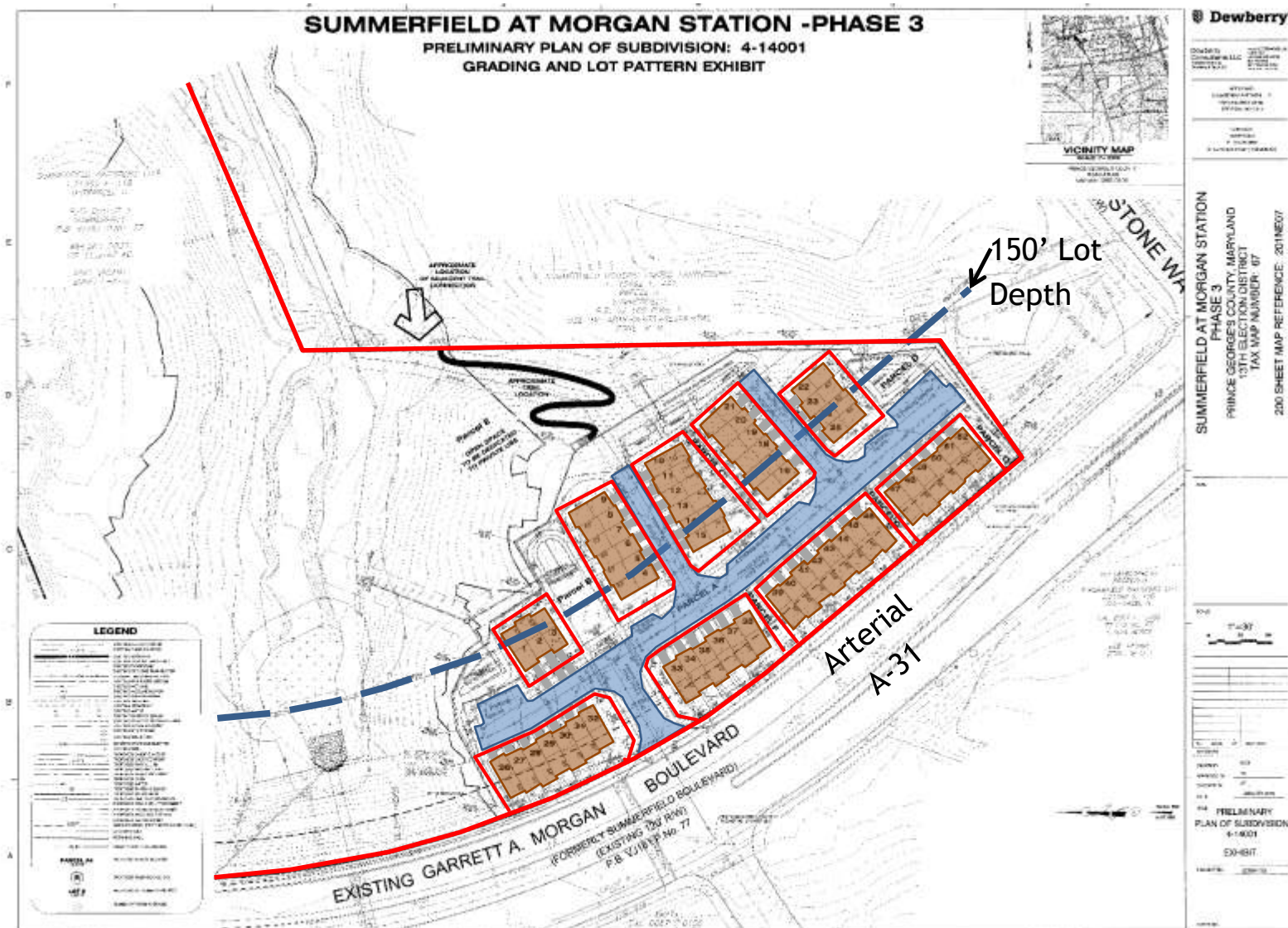
MASTER PLAN RIGHT-OF-WAY MAP



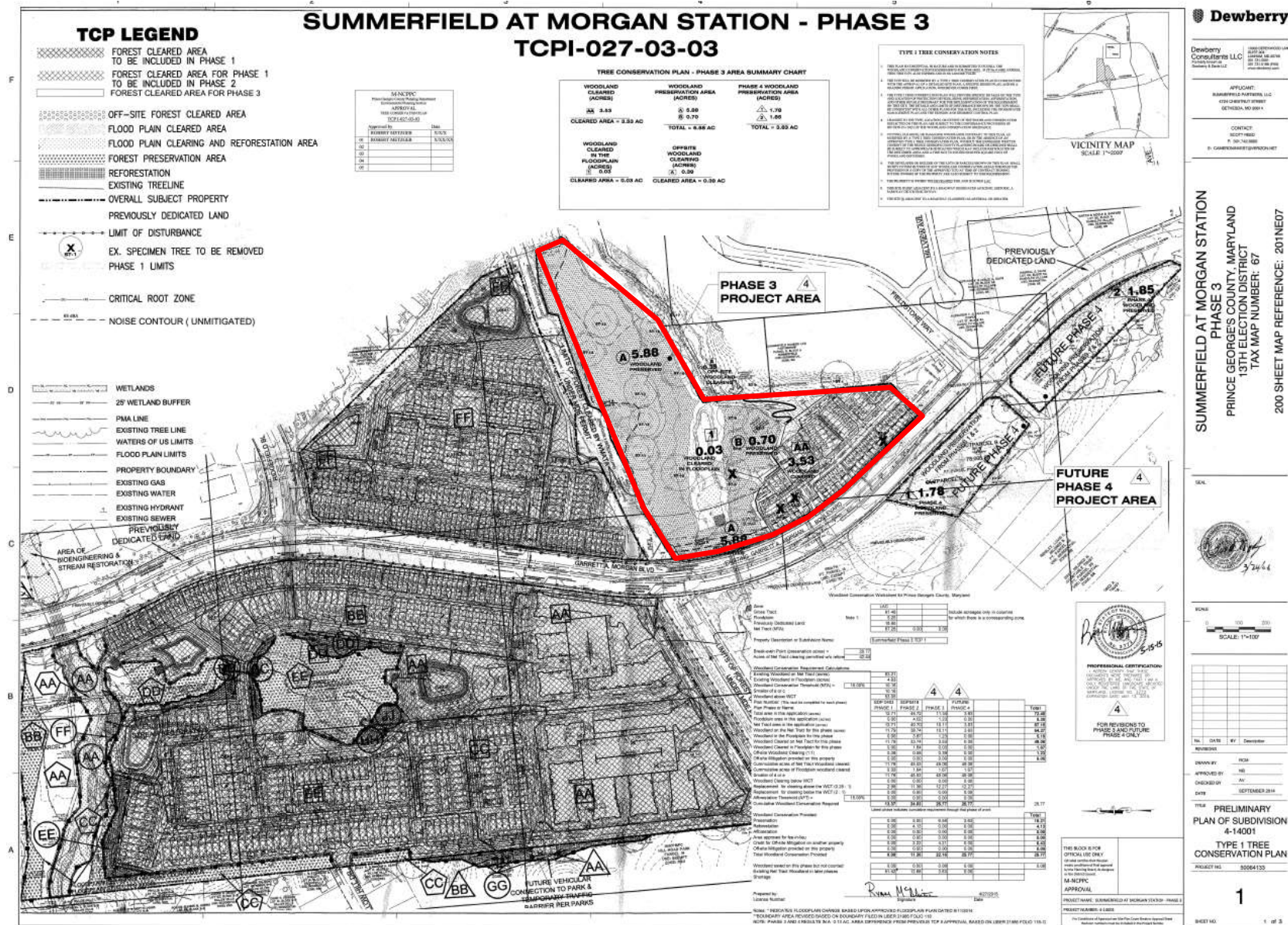
PRELIMINARY PLAN



GRADING EXHIBIT



TCP-1



Dewberry

Dewberry
Consultants LLC
1000 N. 10th Street
Bethesda, MD 20814AFFILIATE:
SUMMERFIELD PARTNERS, LLC
1000 N. 10th Street
Bethesda, MD 20814CONTACT:
SCOTT REED
P. 301-740-0000
E. CAROLAN@DEWBERRY.COMSUMMERFIELD AT MORGAN STATION
PHASE 3
PRINCE GEORGES COUNTY, MARYLAND
13TH ELECTION DISTRICT
TAX MAP NUMBER: 67
200 SHEET MAP REFERENCE: 201NE07

SCALE



SCALE

SCALE: 1"=100'

NO.	DATE	BY	DESCRIPTION
1			
2			
3			
4			
5			
6			
7			
8			
9			
10			

DESIGN BY: RCR
APPROVED BY: [Signature]
CHECKED BY: [Signature]
DATE: SEPTEMBER 2014

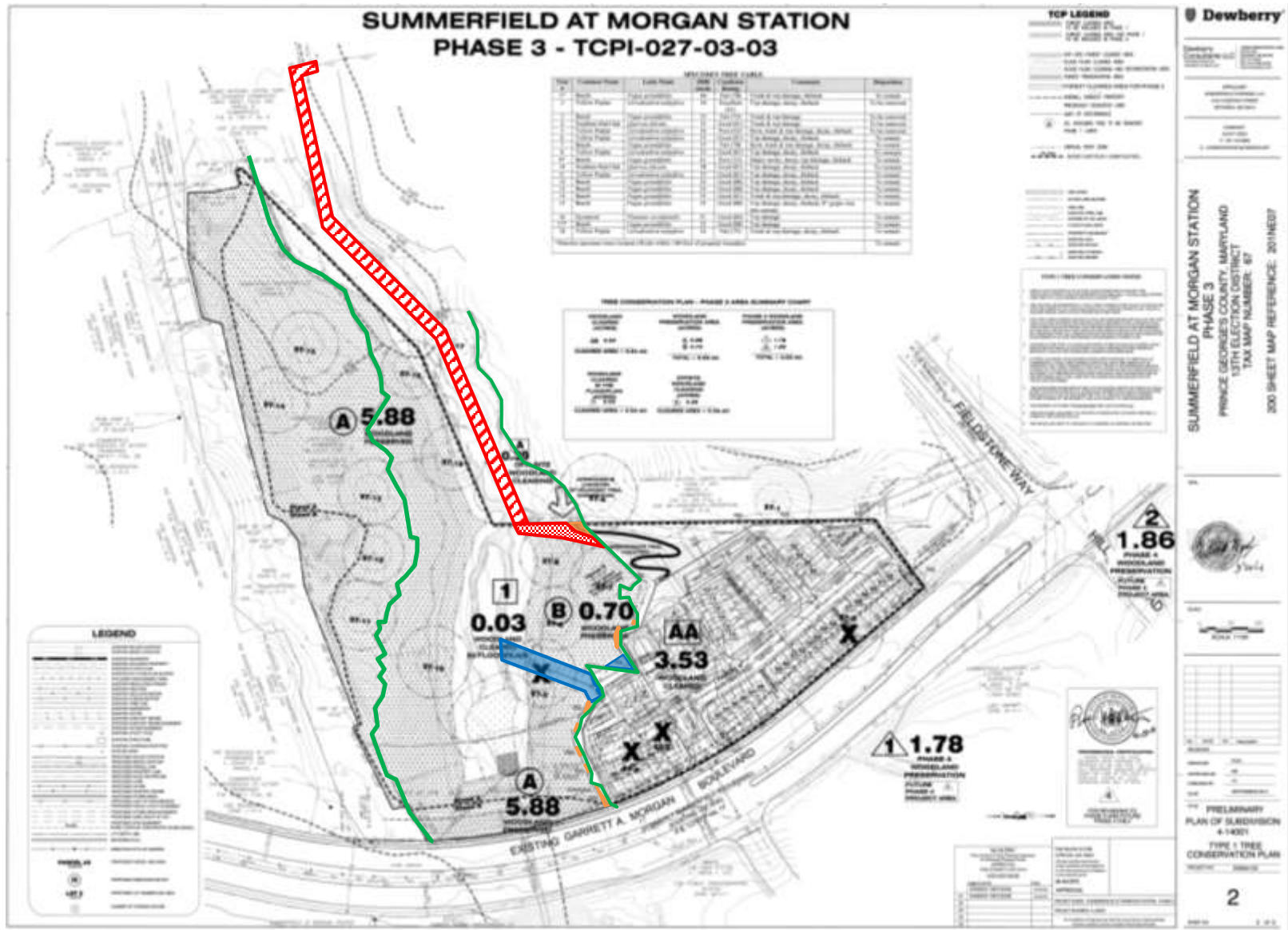
TITLE: PRELIMINARY
PLAN OF SUBDIVISION
4-14001
TYPE 1 TREE
CONSERVATION PLAN

PROJECT NO. 30504133

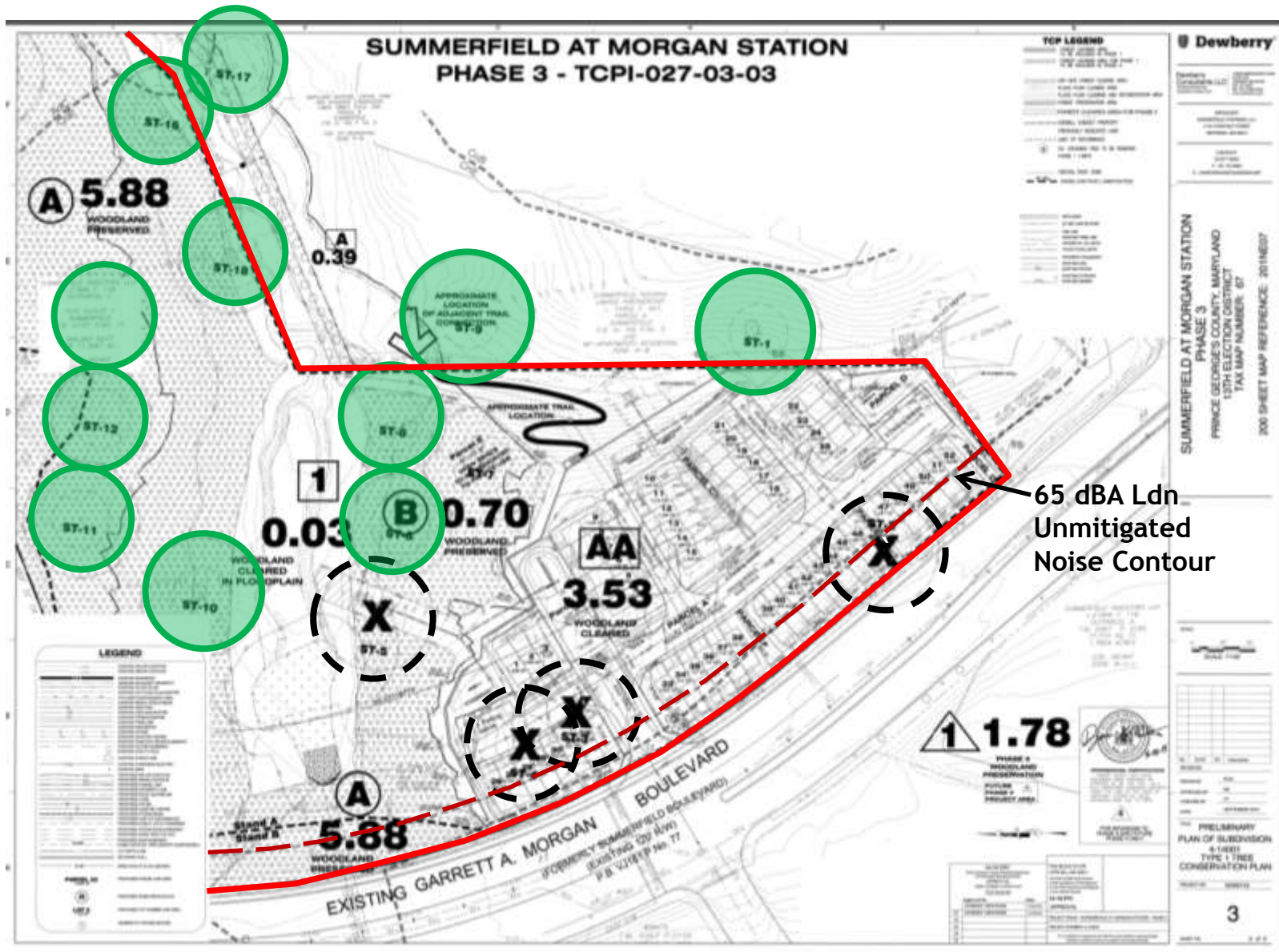
1
SHEET NO. 1 OF 3



PRIMARY MANAGEMENT AREA IMPACTS



TCP-1: SPECIMEN TREES



SUMMERFIELD TRAIL CONNECTION

