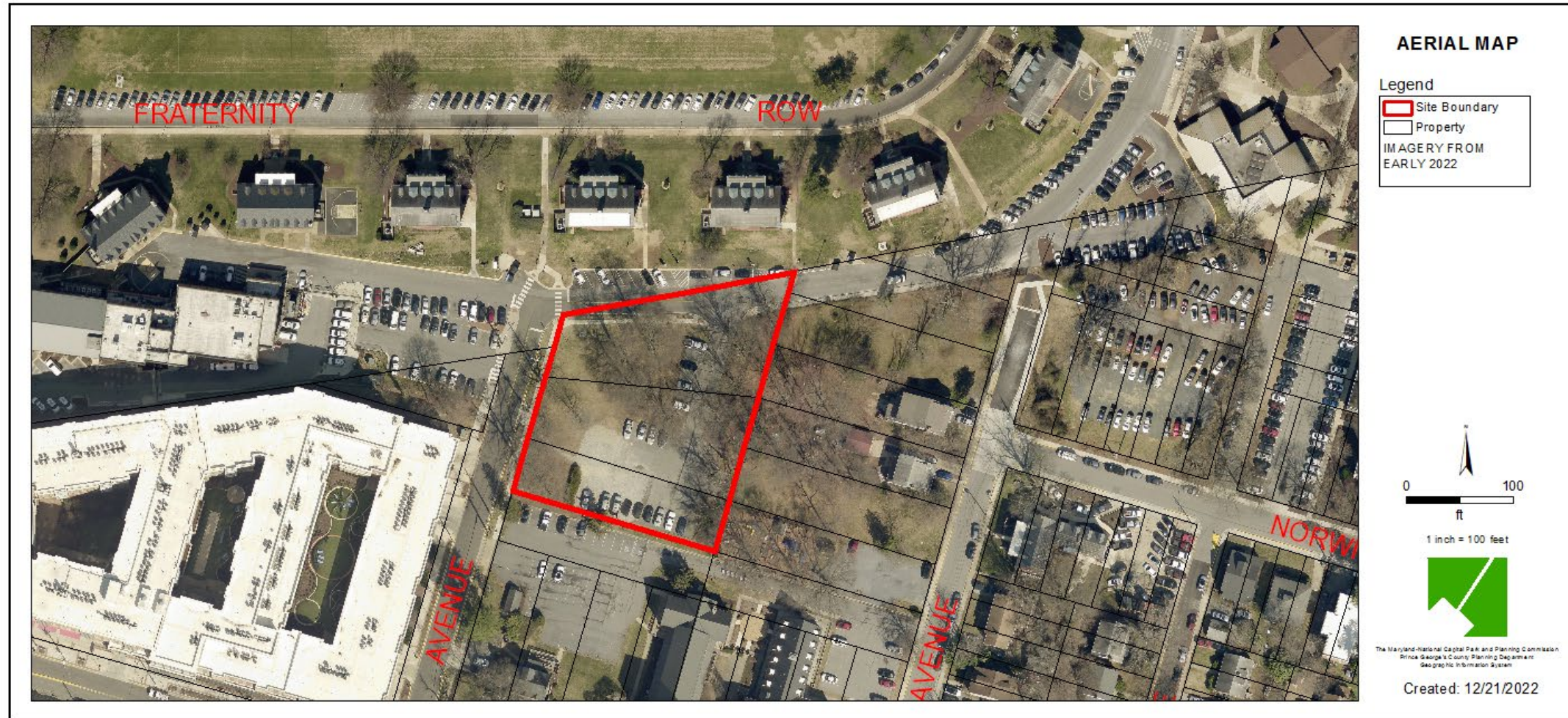


HILLEL CENTER

1-YEAR EXTENSION REQUEST

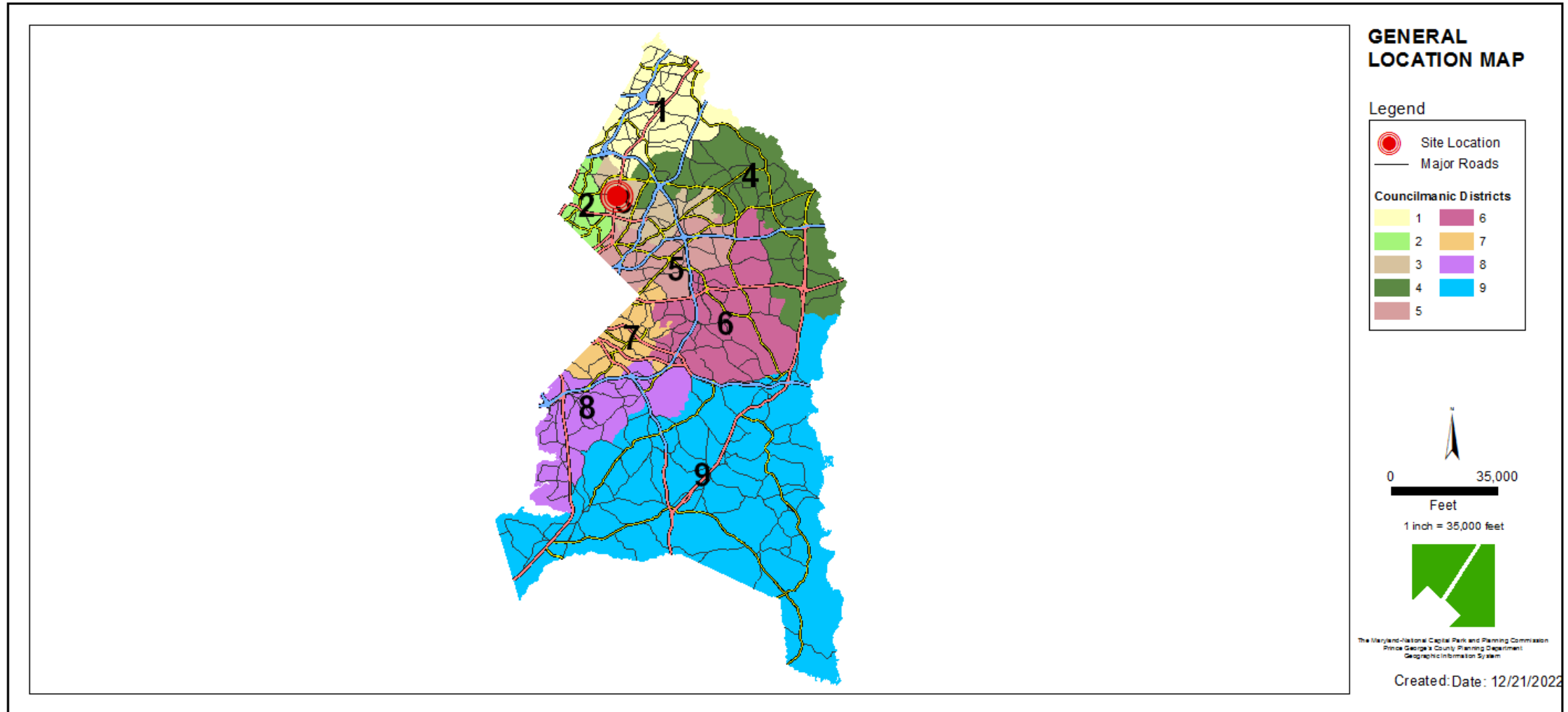
Preliminary Plan of Subdivision
Staff Recommendation: APPROVAL



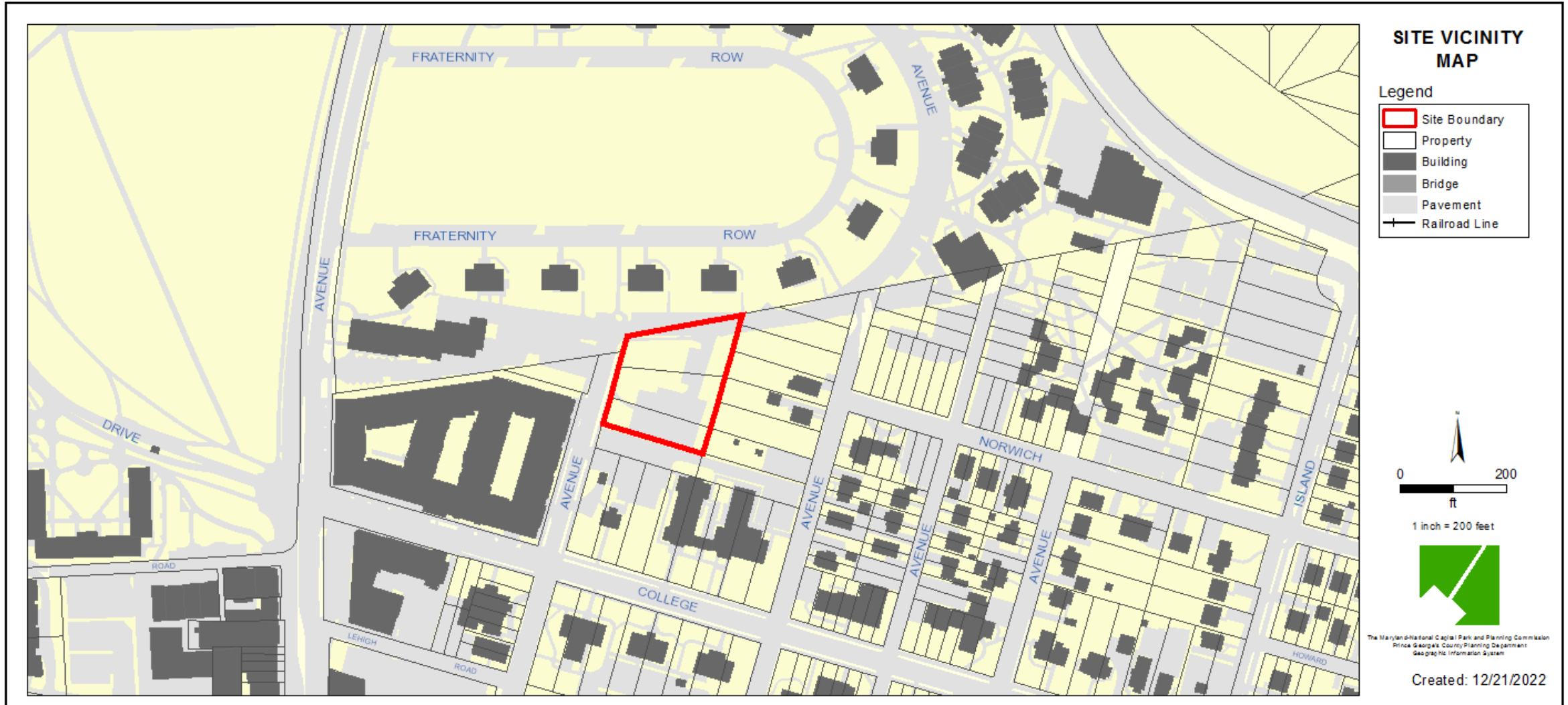
GENERAL LOCATION MAP

Council District: 03

Planning Area: 66



SITE VICINITY MAP

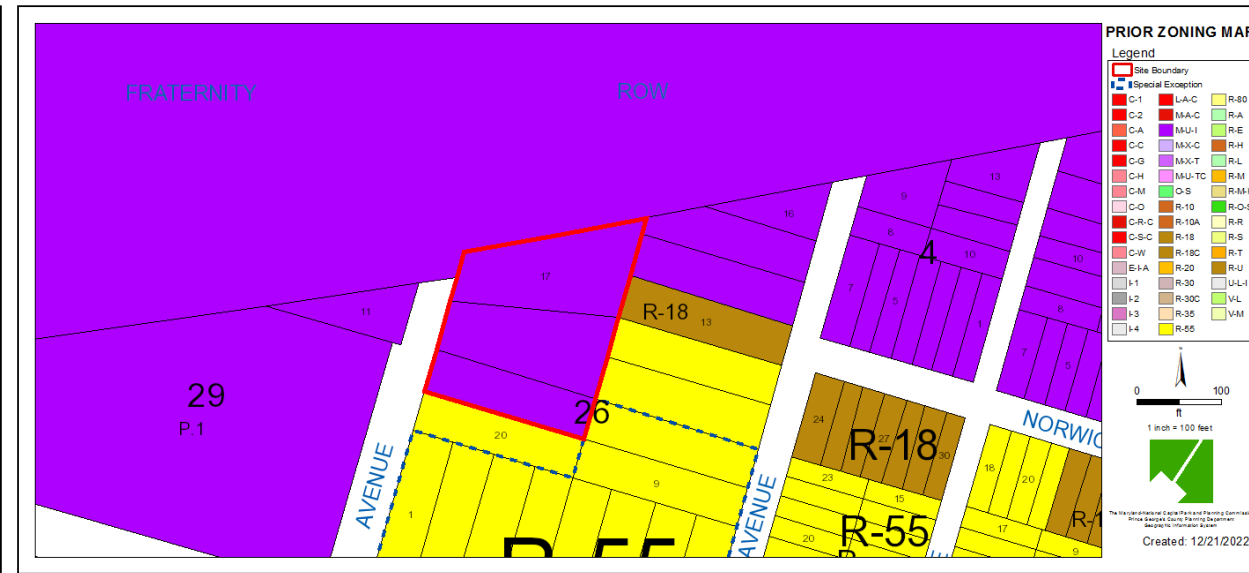
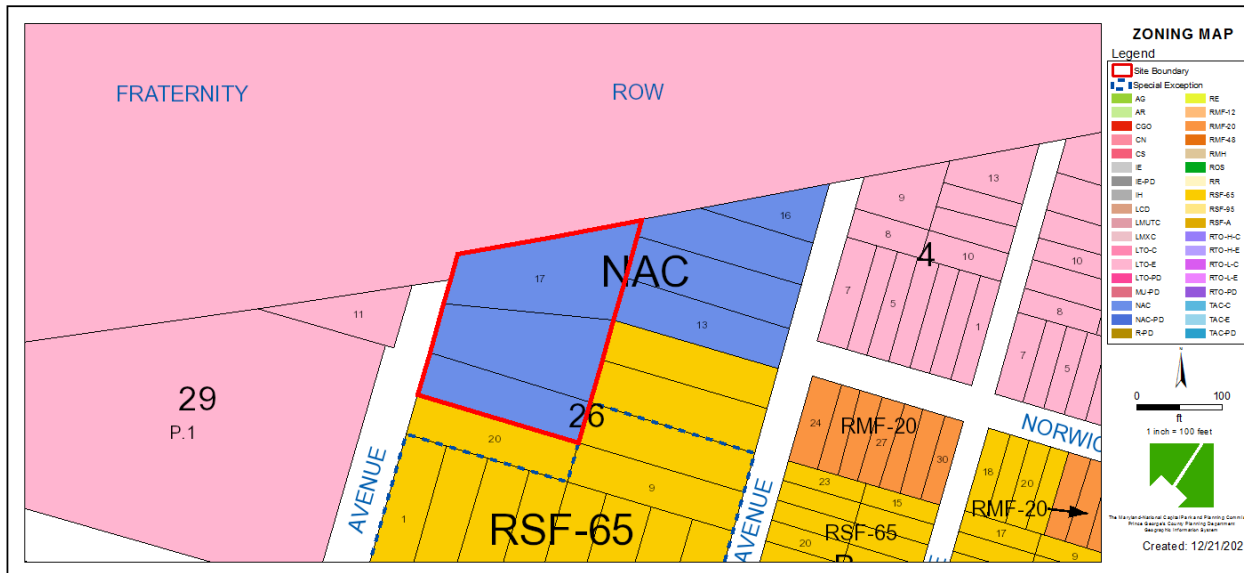


ZONING MAP (CURRENT & PRIOR)

Current Property Zone: NAC
Prior Property Zone: M-U-I

CURRENT ZONING MAP

PRIOR ZONING MAP

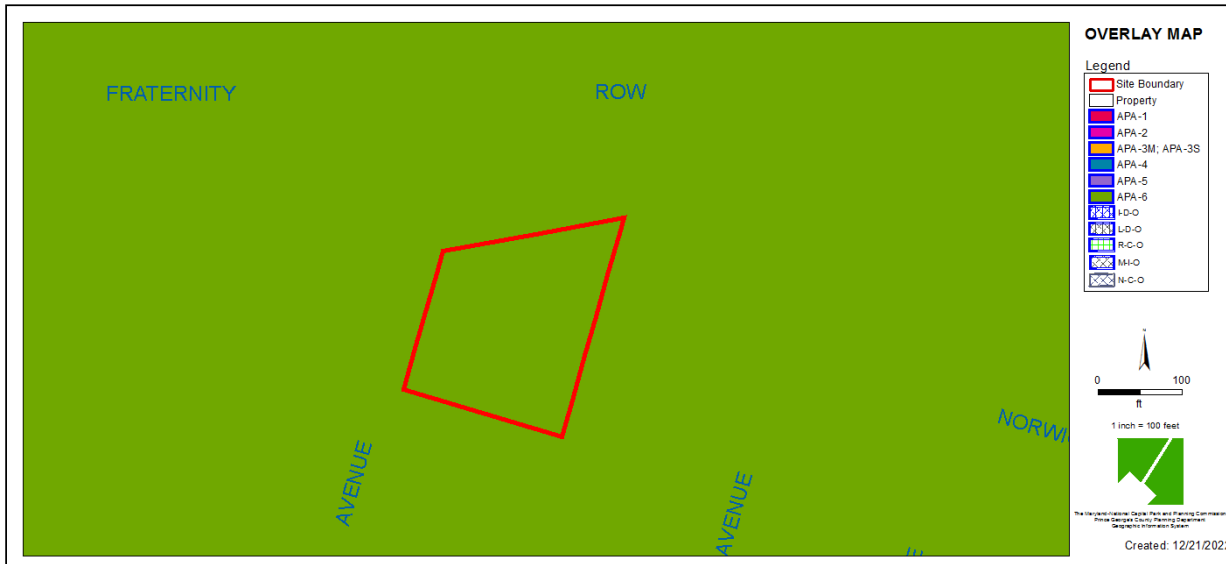


OVERLAY MAP (CURRENT & PRIOR)

Current Overlay Map: N/A

Prior Overlay Map: D-D-O

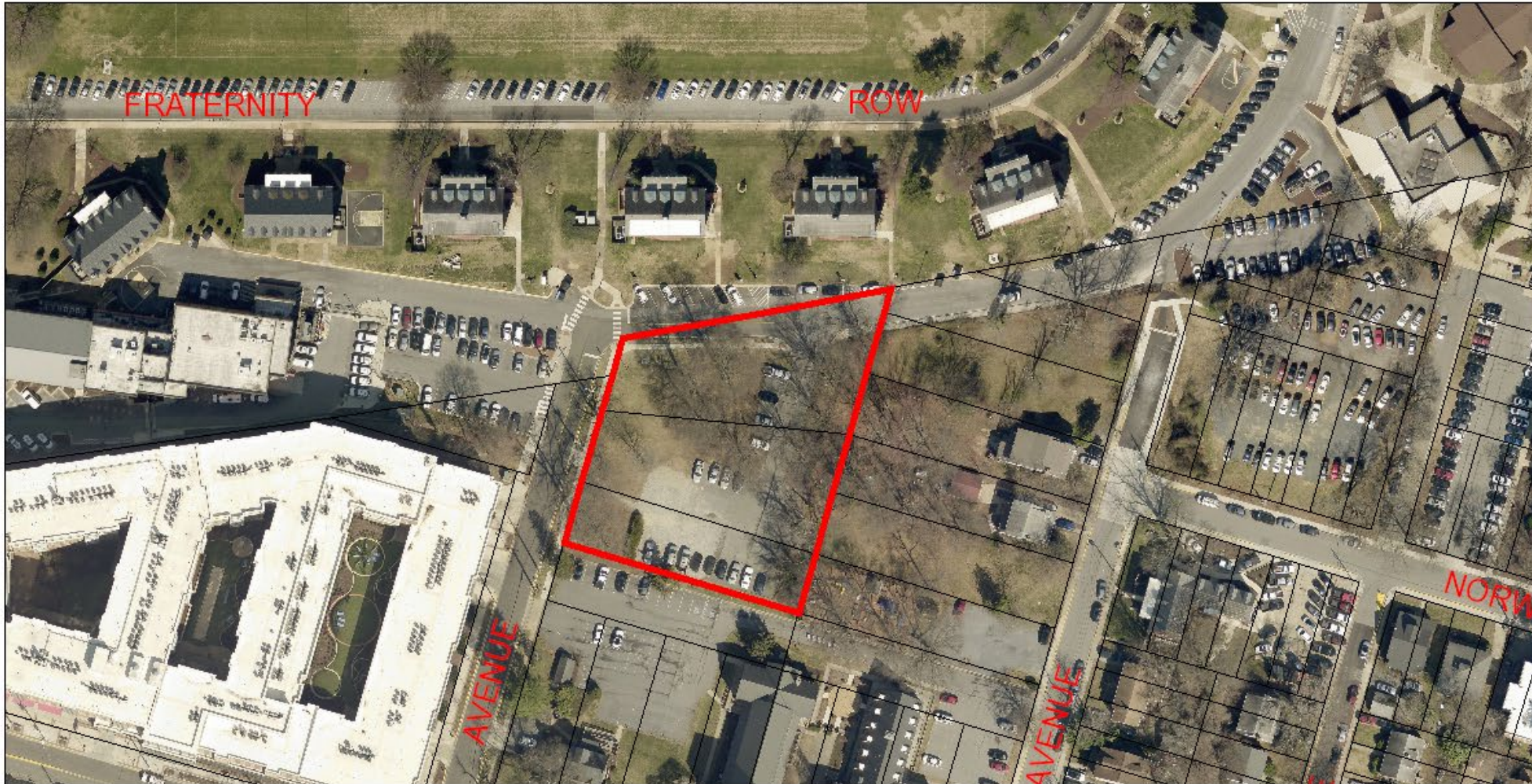
CURRENT OVERLAY MAP



PRIOR OVERLAY MAP





AERIAL MAP



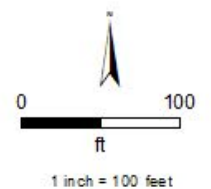
AERIAL MAP

Legend

 Site Boundary

 Property

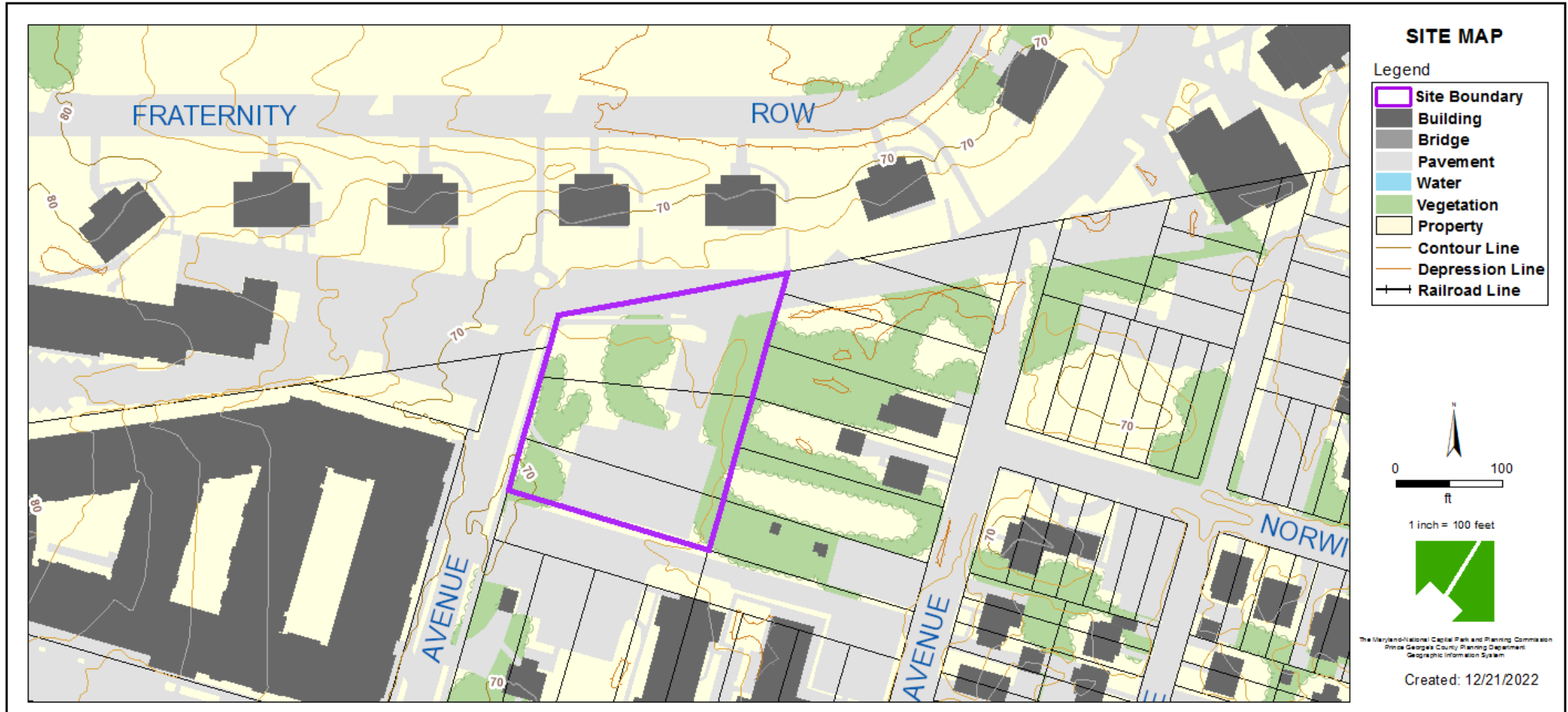
IMAGERY FROM
EARLY 2022



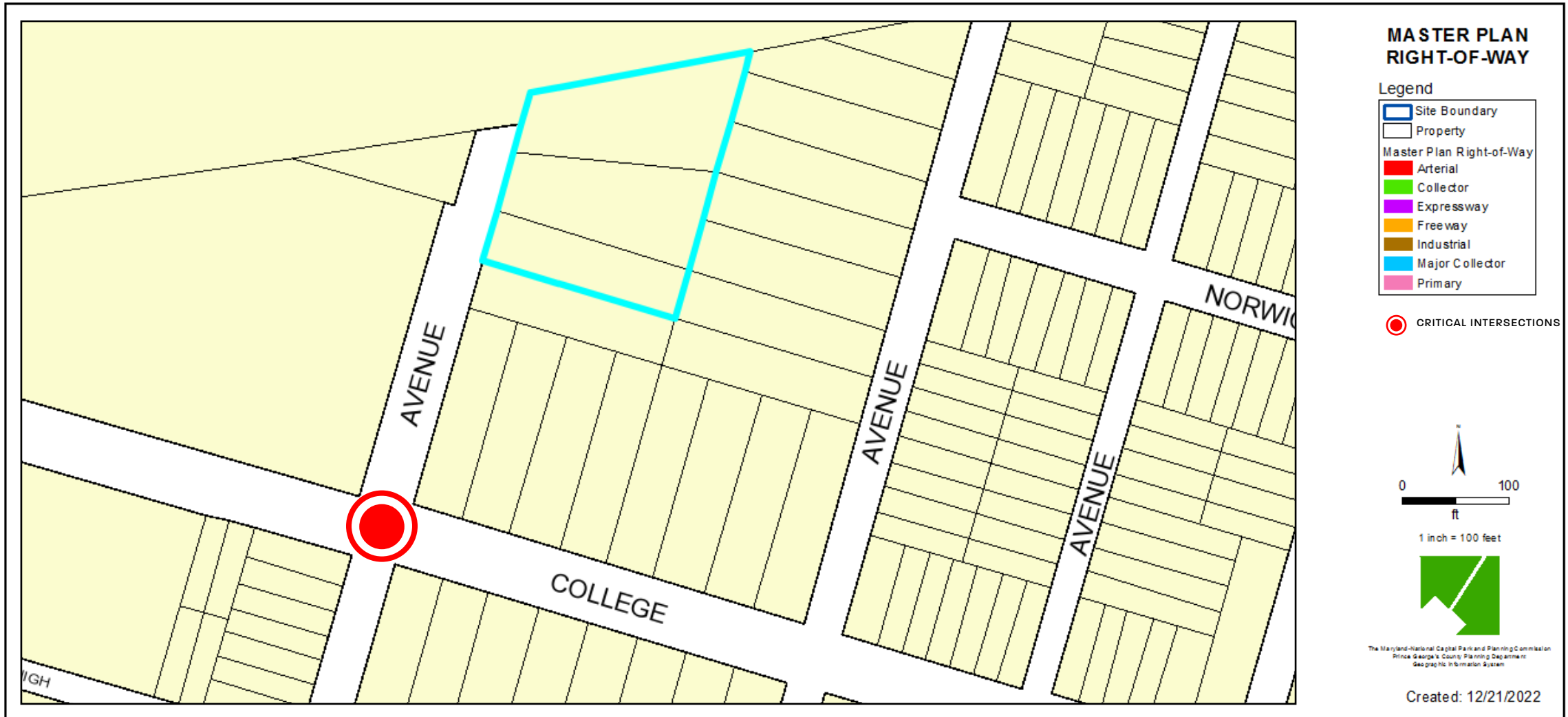
The Maryland-National Capital Park and Planning Commission
Prince George's County Planning Department
Geographic Information System

Created: 12/21/2022

SITE MAP



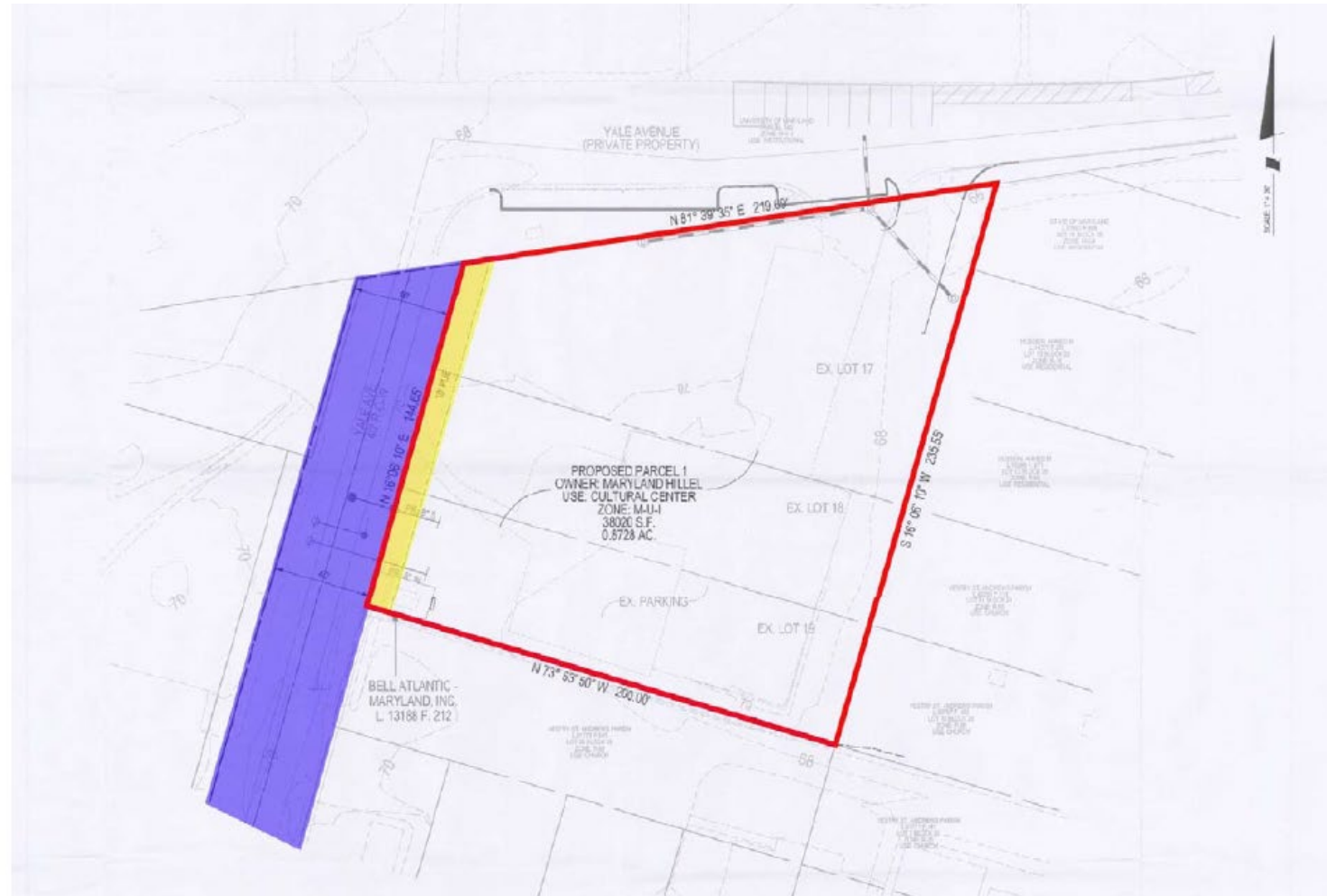
MASTER PLAN RIGHT-OF-WAY MAP



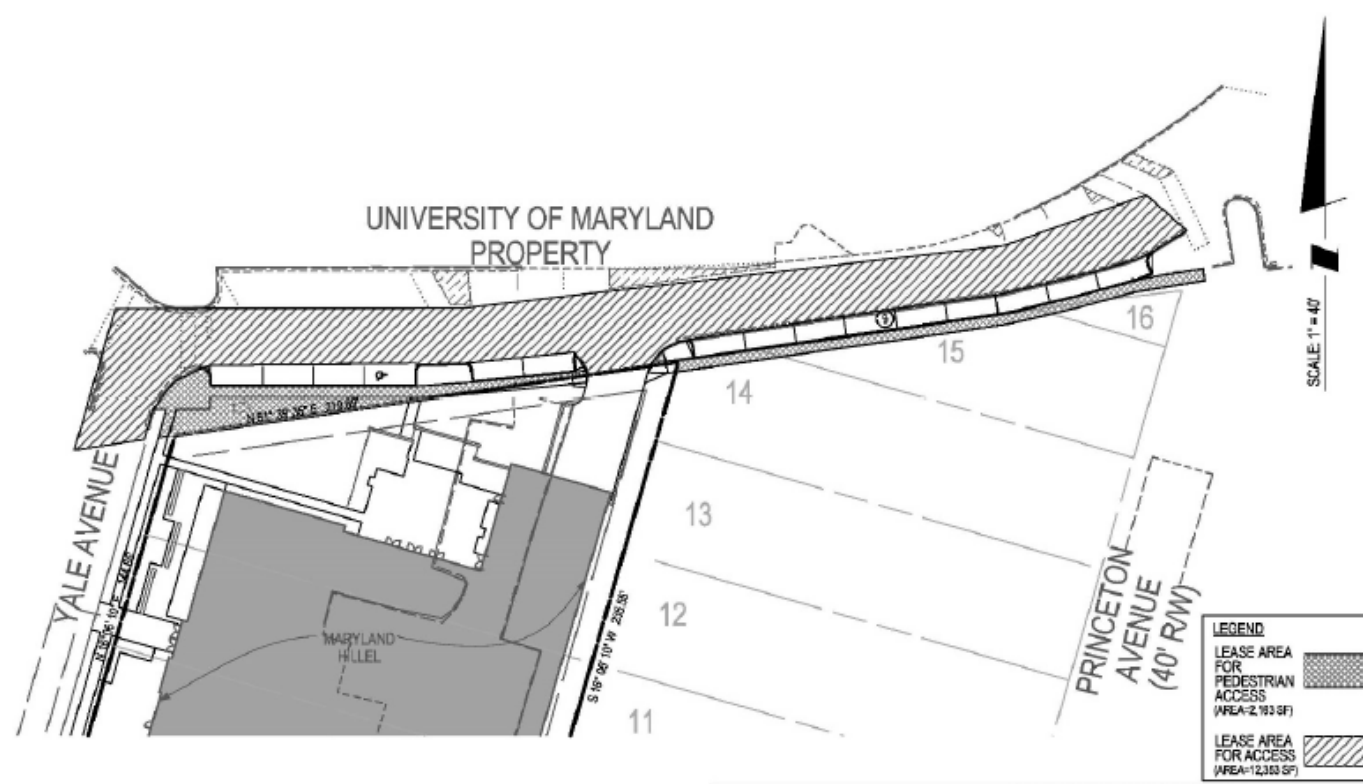
BIRD'S-EYE VIEW WITH APPROXIMATE SITE BOUNDARY OUTLINED



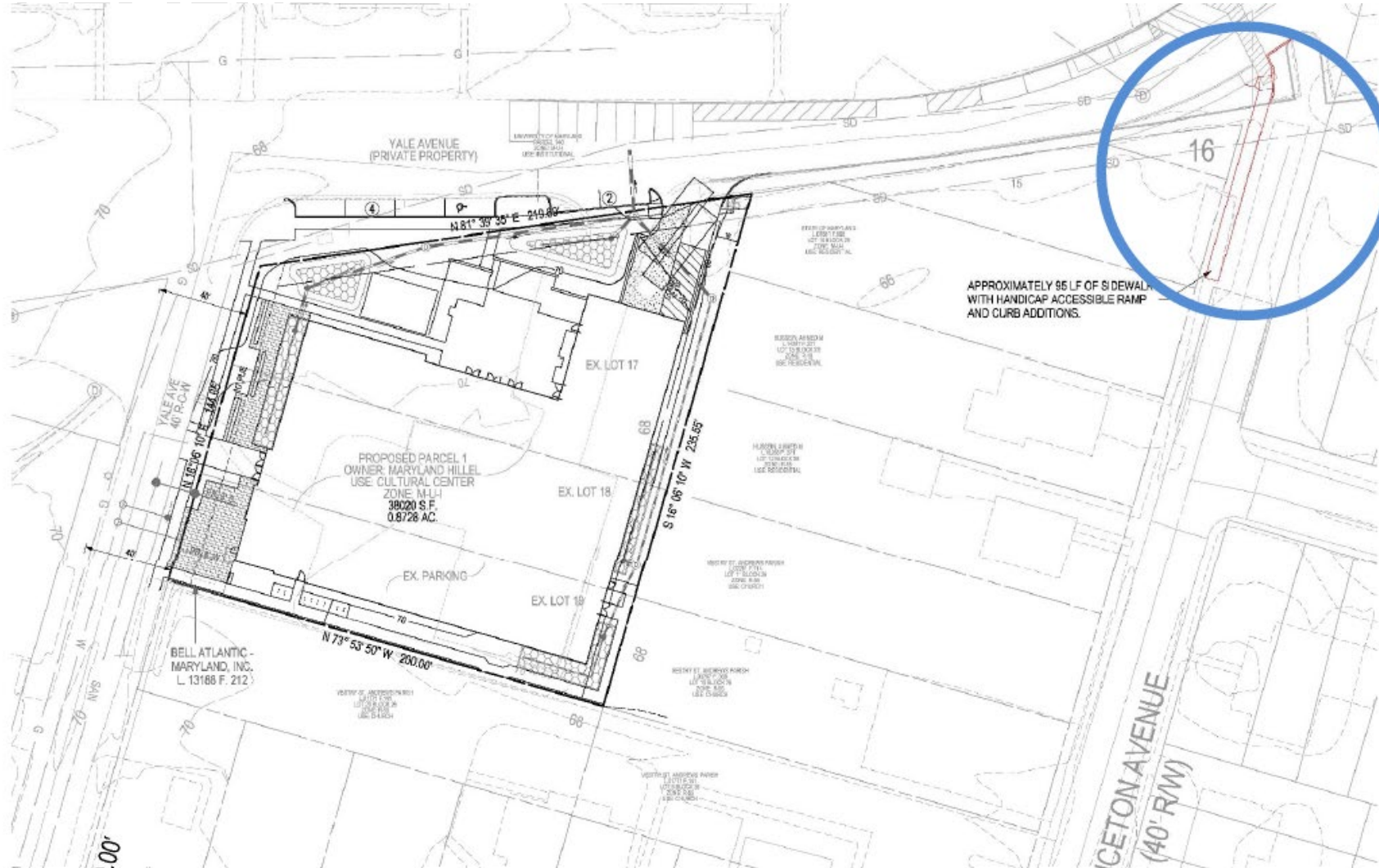
PRELIMINARY PLAN OF SUBDIVISION



APPLICANT'S EXHIBIT A – VEHICULAR ACCESS EASEMENT



APPLICANT'S EXHIBIT B – BPIS OFF SITE IMPF



STAFF RECOMMENDATION

APPROVAL of one-year extension

Major Issues:

- N/A

Applicant Required Mailings:

- N/A