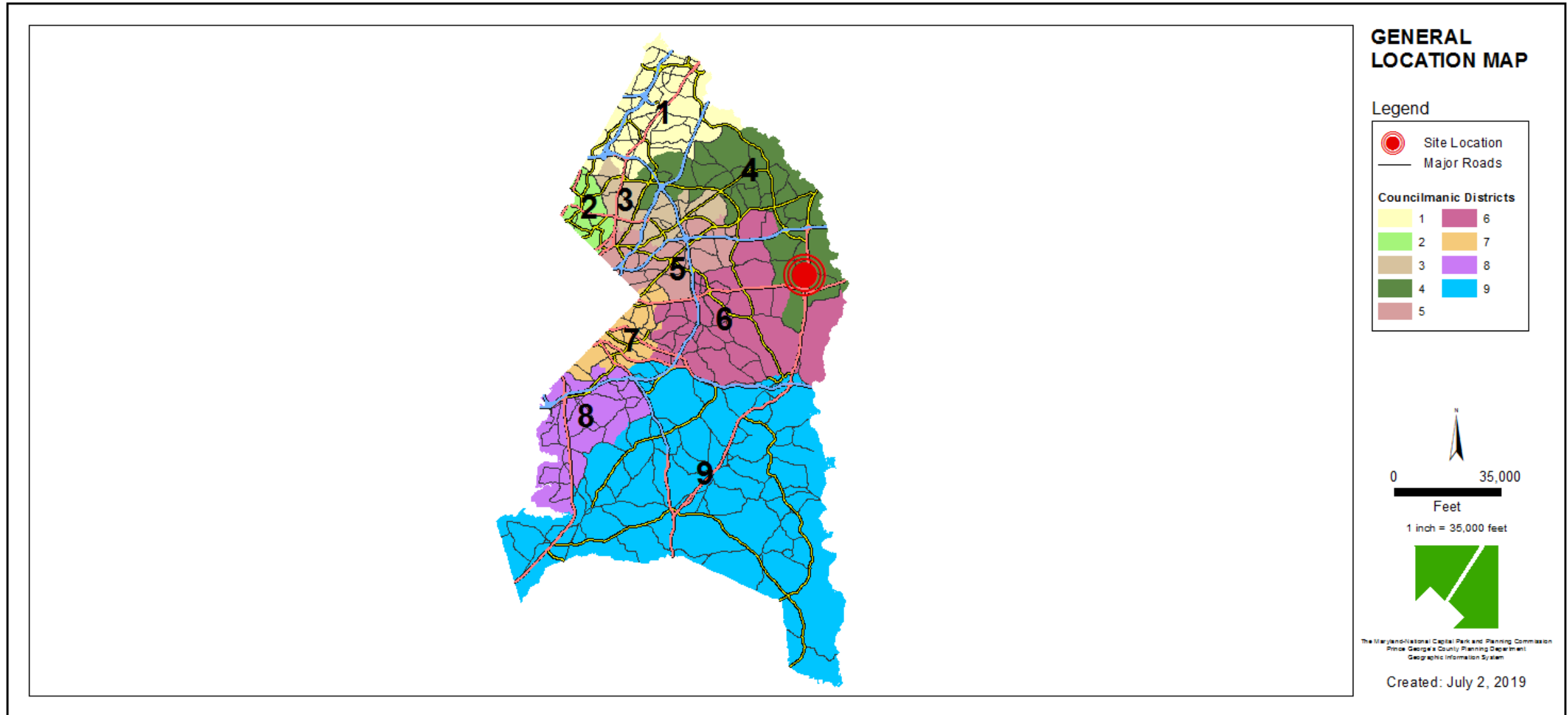


ITEM: 8  
CASE: 4-19032

## AMBER RIDGE

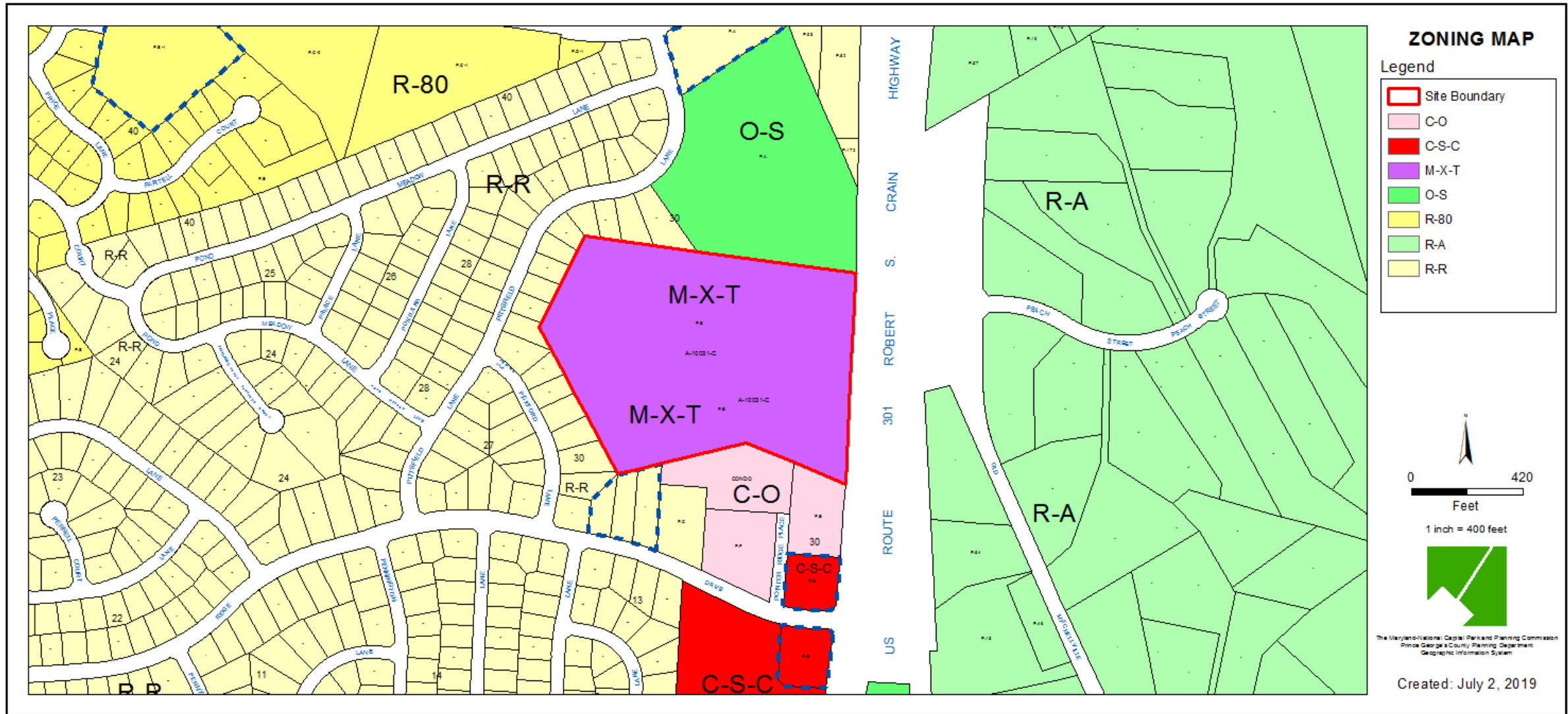
THE PRINCE GEORGE'S COUNTY PLANNING DEPARTMENT

# GENERAL LOCATION MAP





# ZONING MAP





# AERIAL MAP



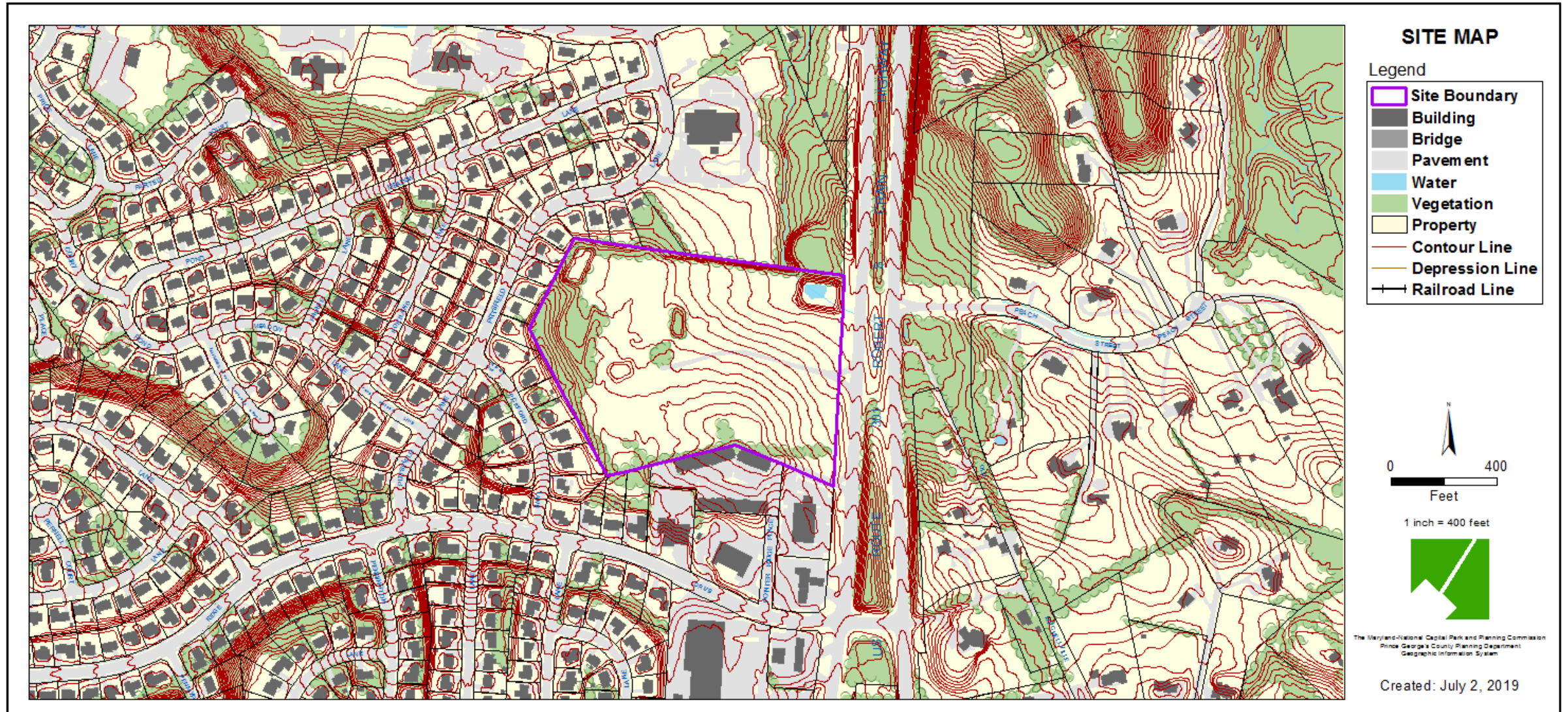


## BIRD'S-EYE VIEW WITH APPROXIMATE SITE BOUNDARY OUTLINED

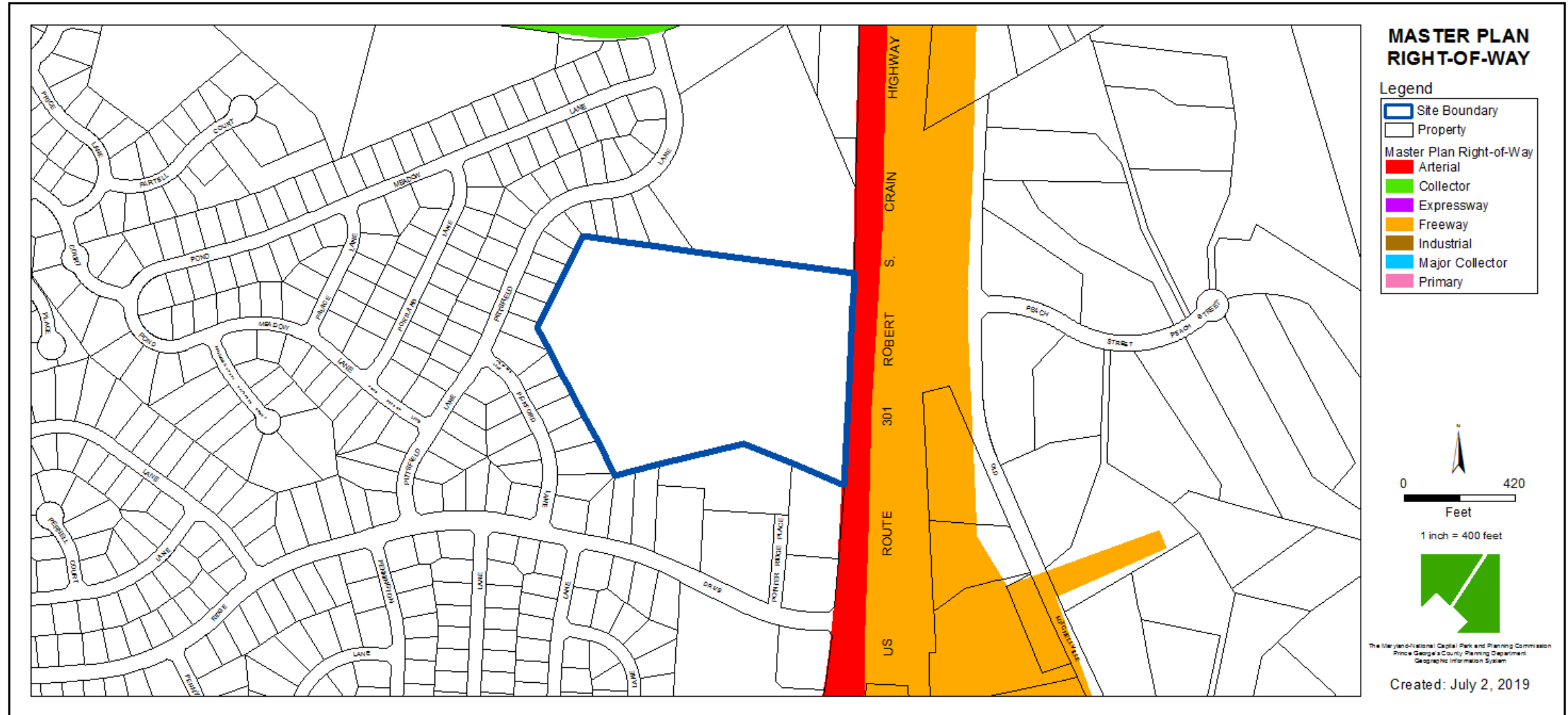




# SITE MAP

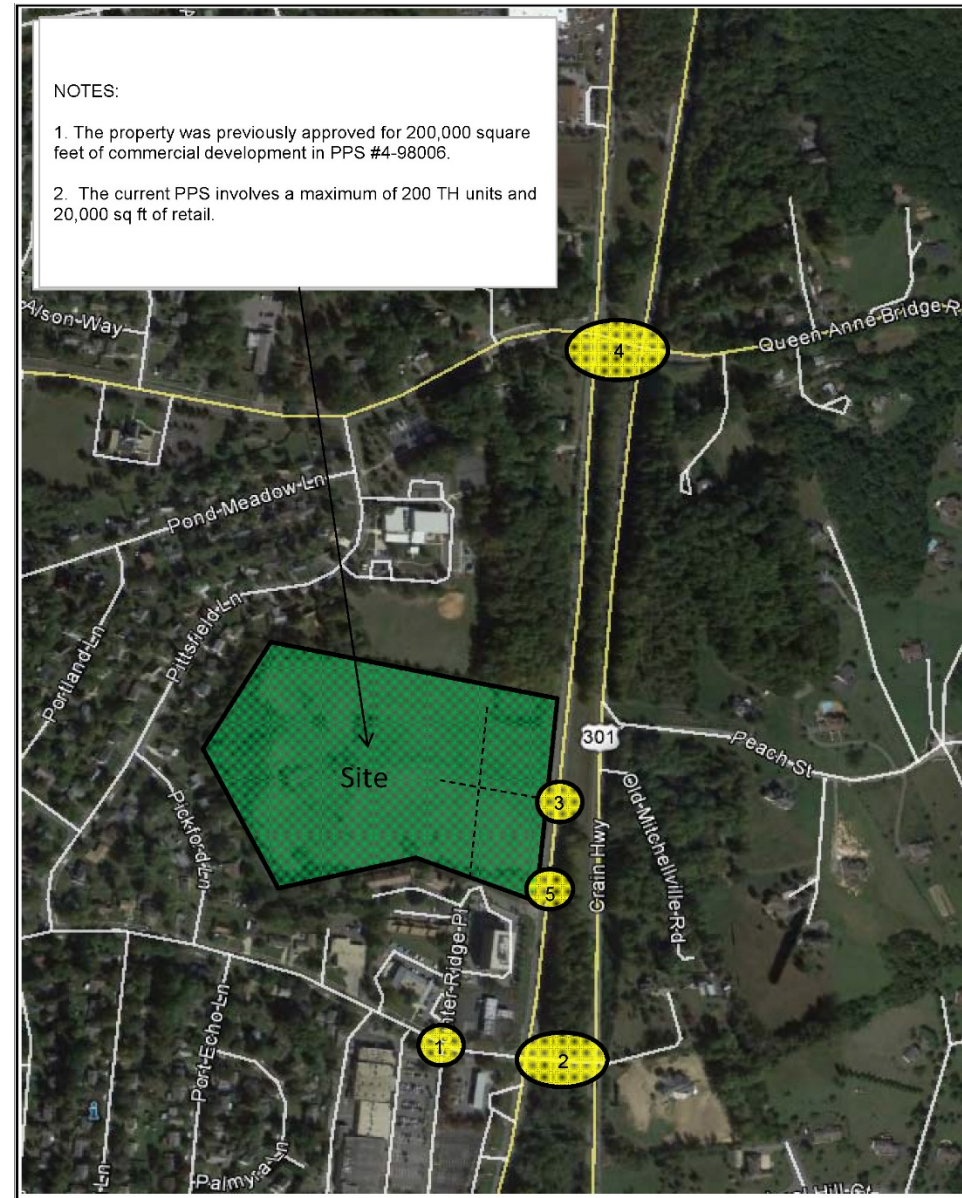


# MASTER PLAN RIGHT-OF-WAY MAP



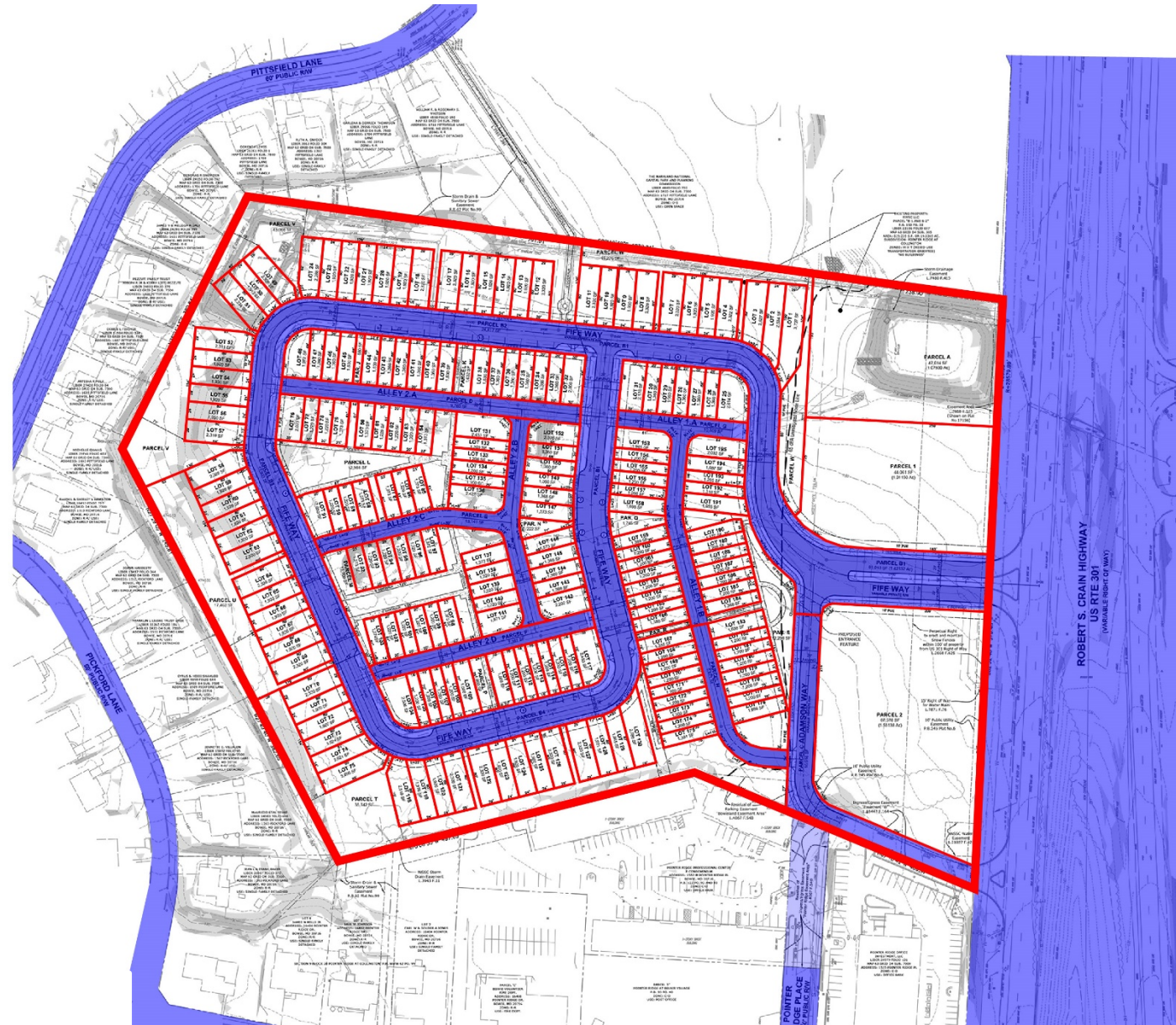


# CRITICAL INTERSECTIONS MAP





# PRELIMINARY PLAN OF SUBDIVISION





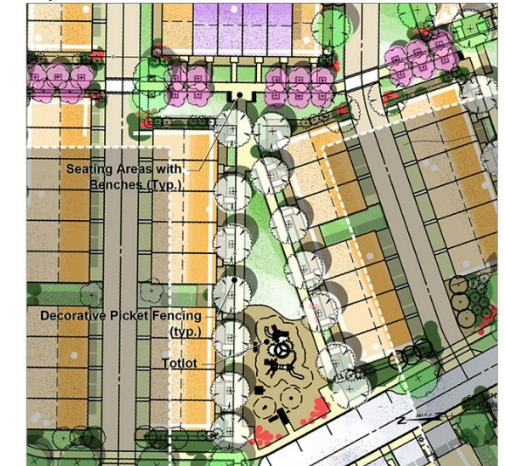




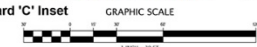
# ILLUSTRATIVE PLAN



Courtyard 'B' Inset



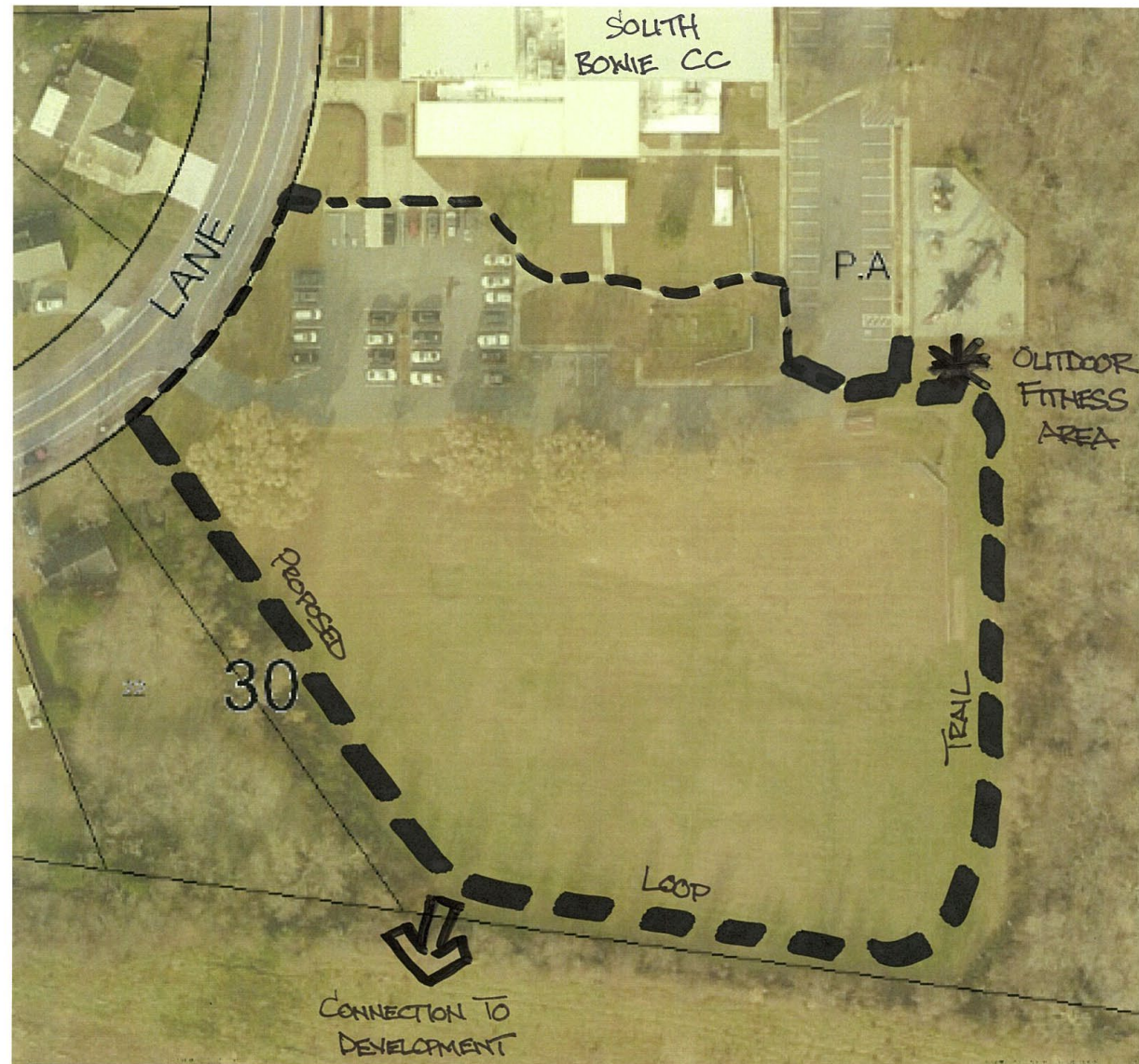
Courtyard 'C' Inset



The proposed number of dwelling units for this subdivision is 195.  
The townhouse unit mix is as follows:  
16' wide townhouse lot 50 units / 25.6%  
20' wide townhouse lot 81 units / 41.6%



# OFF-SITE RECREATION



4-19032 AMBER RIDGE

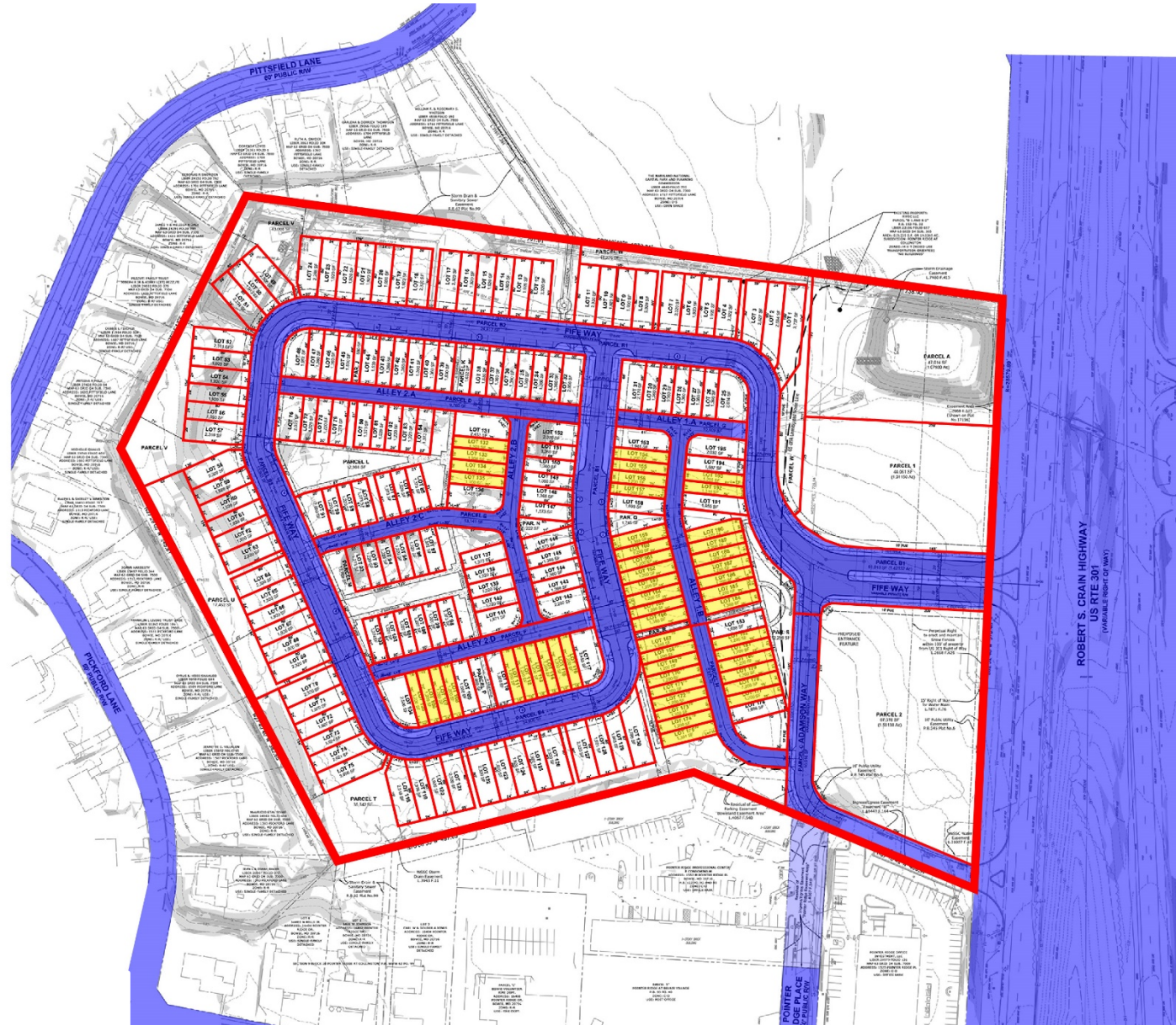
1.9.20

DPR EXHIBIT "A"



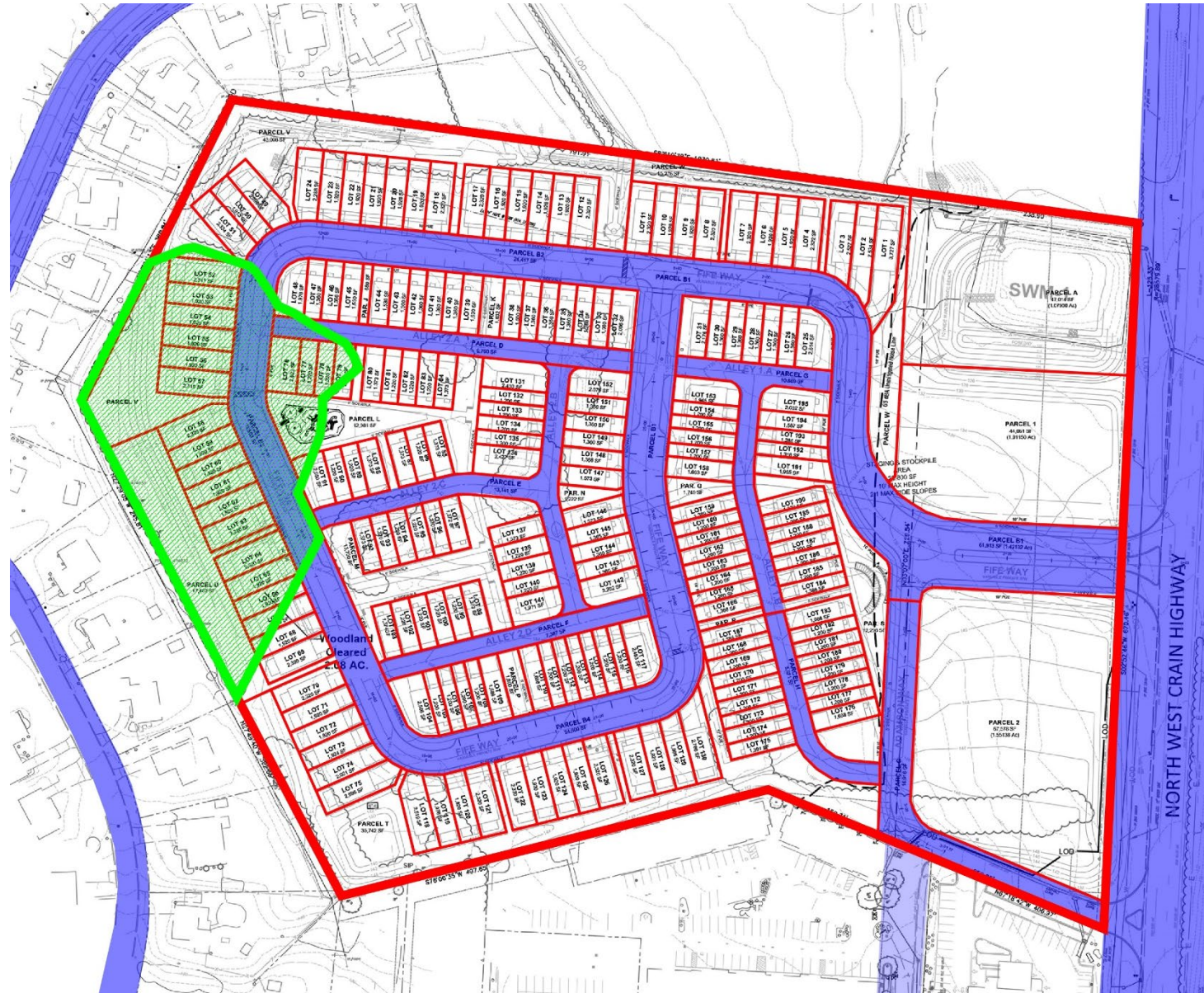


# VARIANCE- 16 FT. TOWNHOMES





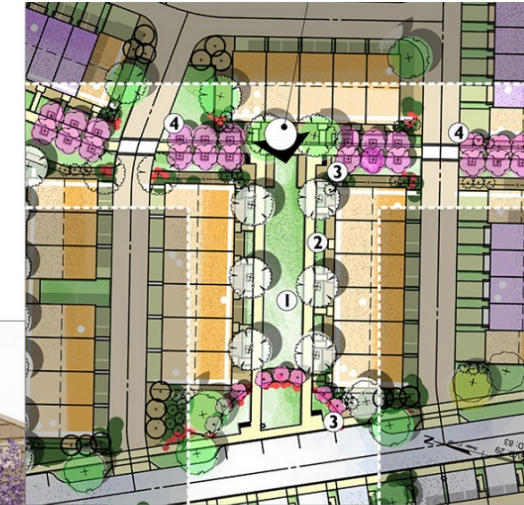
# TYPE I TREE CONSERVATION PLAN





# VIEWS

Courtyard 'B' View of townhomes fronting on formal lawn, looking west



Courtyard 'B' Inset

GRAPHIC SCALE



## Amenity Key

- ① Open Lawn for passive/active use
- ② Decorative Picket Fencing (typ.)
- ③ Seating Areas with Benches (typ.)
- ④ Flowering Tree Allee'



# ILLUSTRATIVE ELEVATION



**AMBER RIDGE PPS 4-19032**  
**ILLUSTRATIVE 16' WIDTH ARCHITECTURAL ELEVATIONS**