

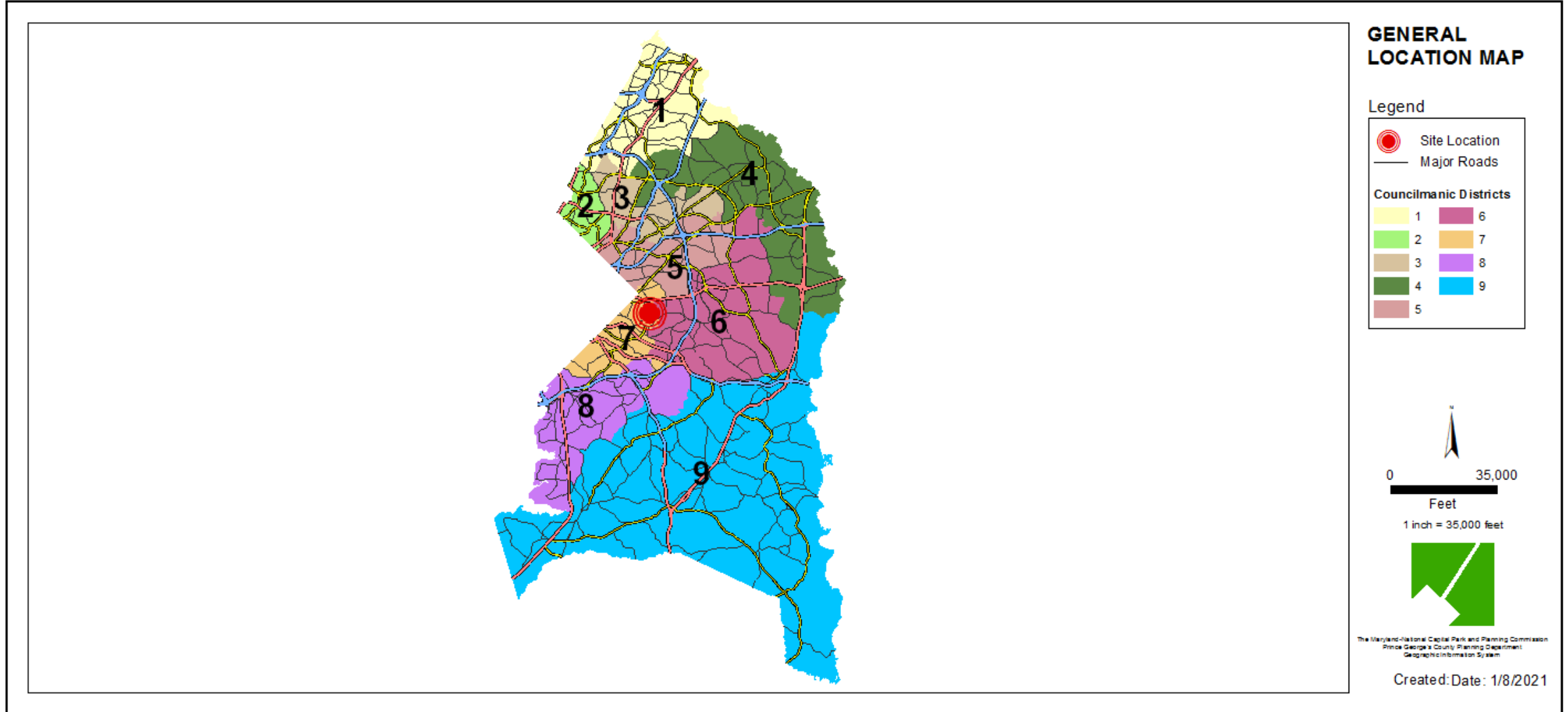
ITEM: 8

CASE: 4-19044

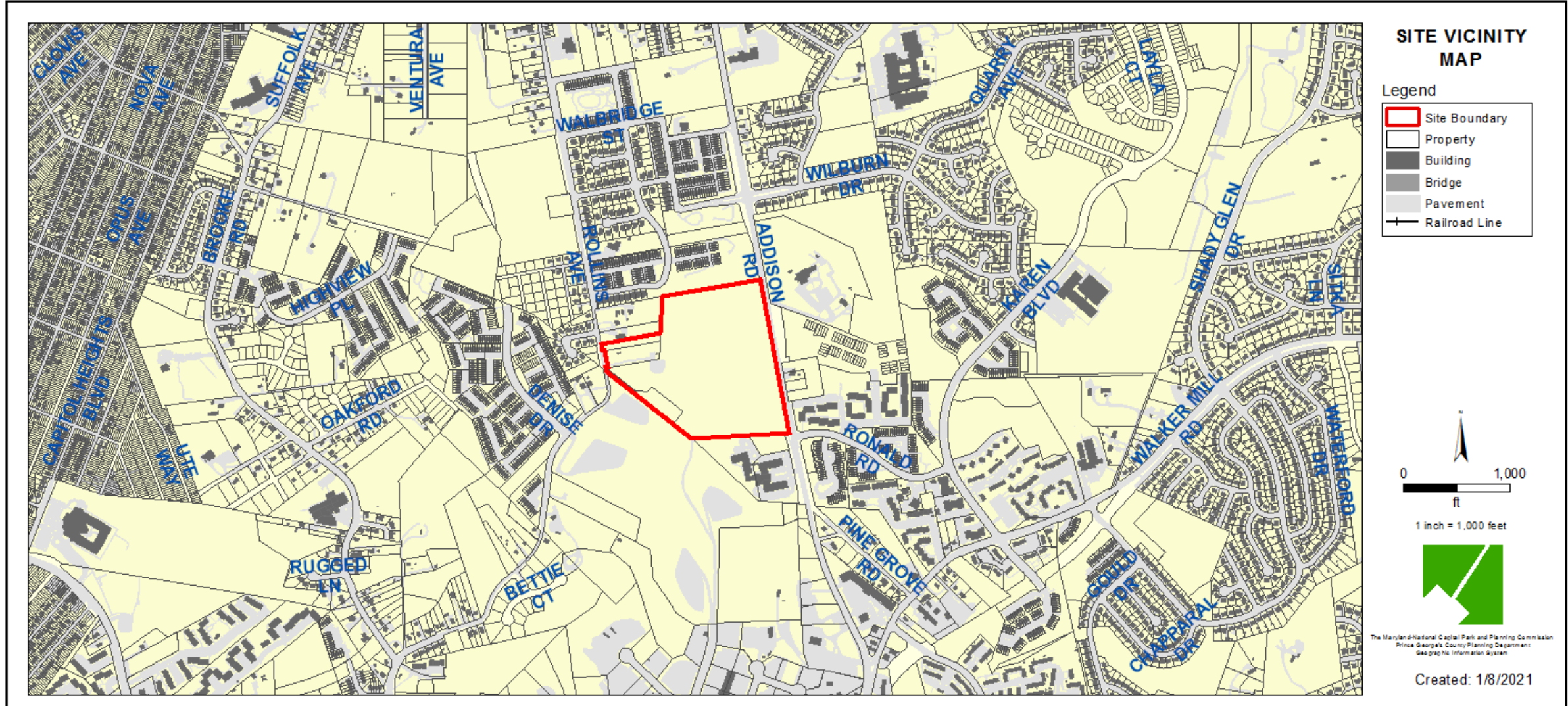
## METRO CITY

THE PRINCE GEORGE'S COUNTY PLANNING DEPARTMENT

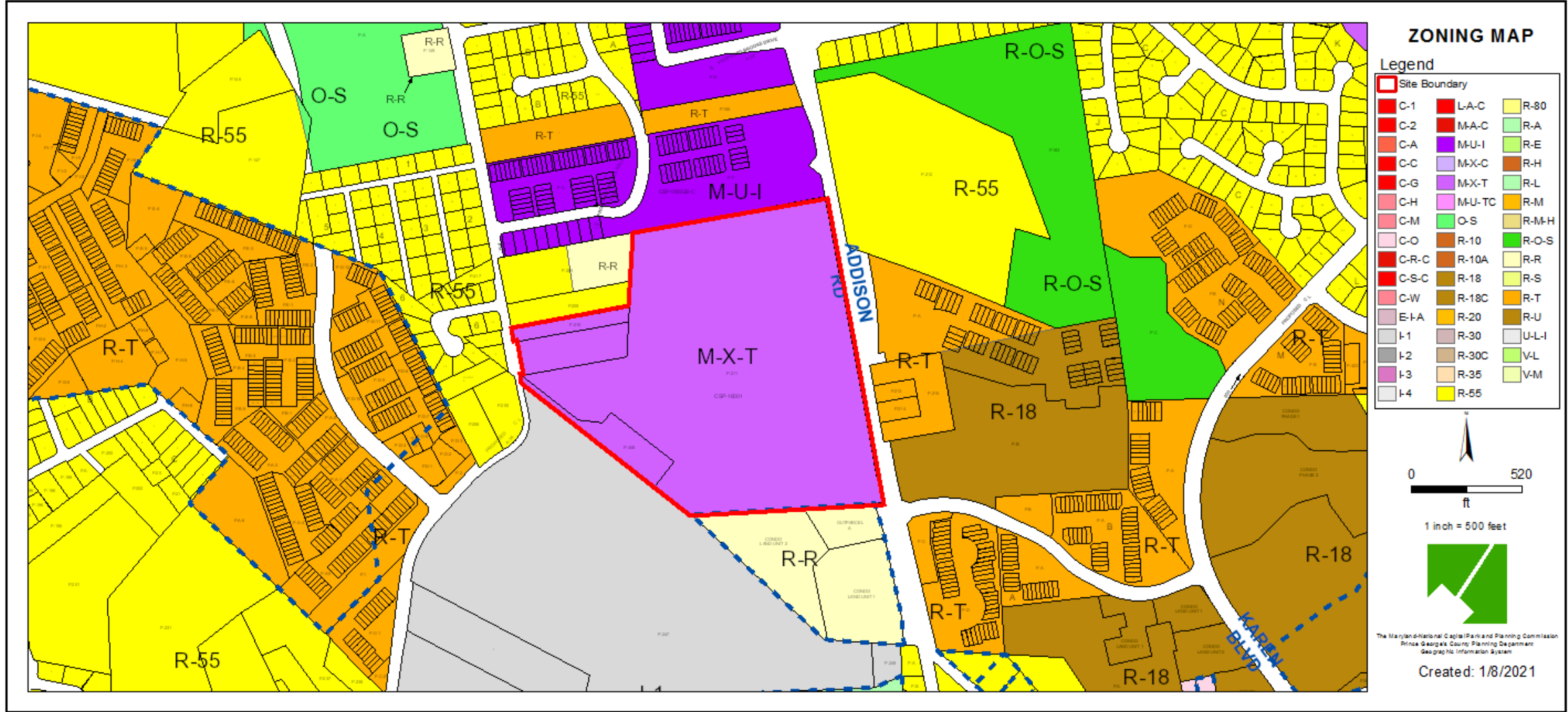
# GENERAL LOCATION MAP



# SITE VICINITY

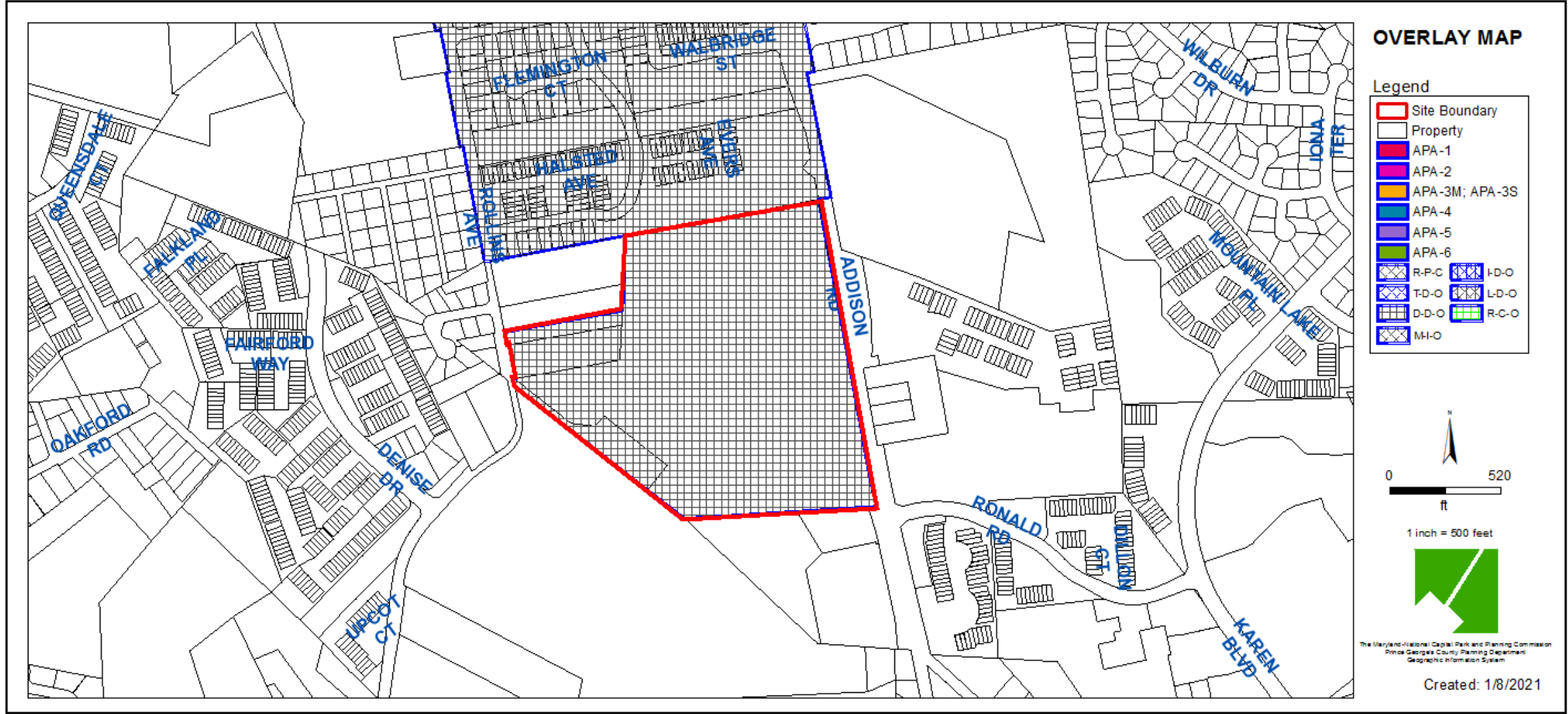


# ZONING MAP



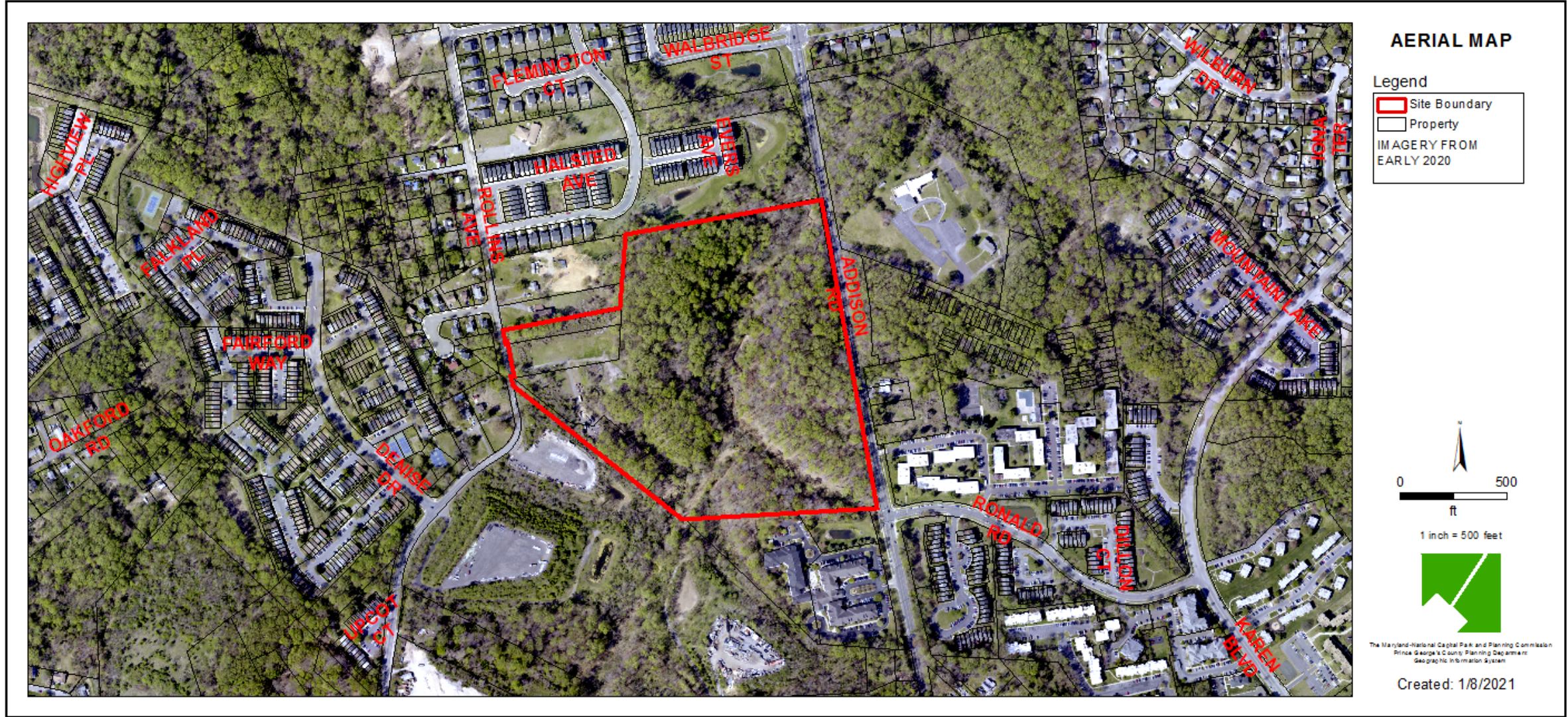


# OVERLAY MAP



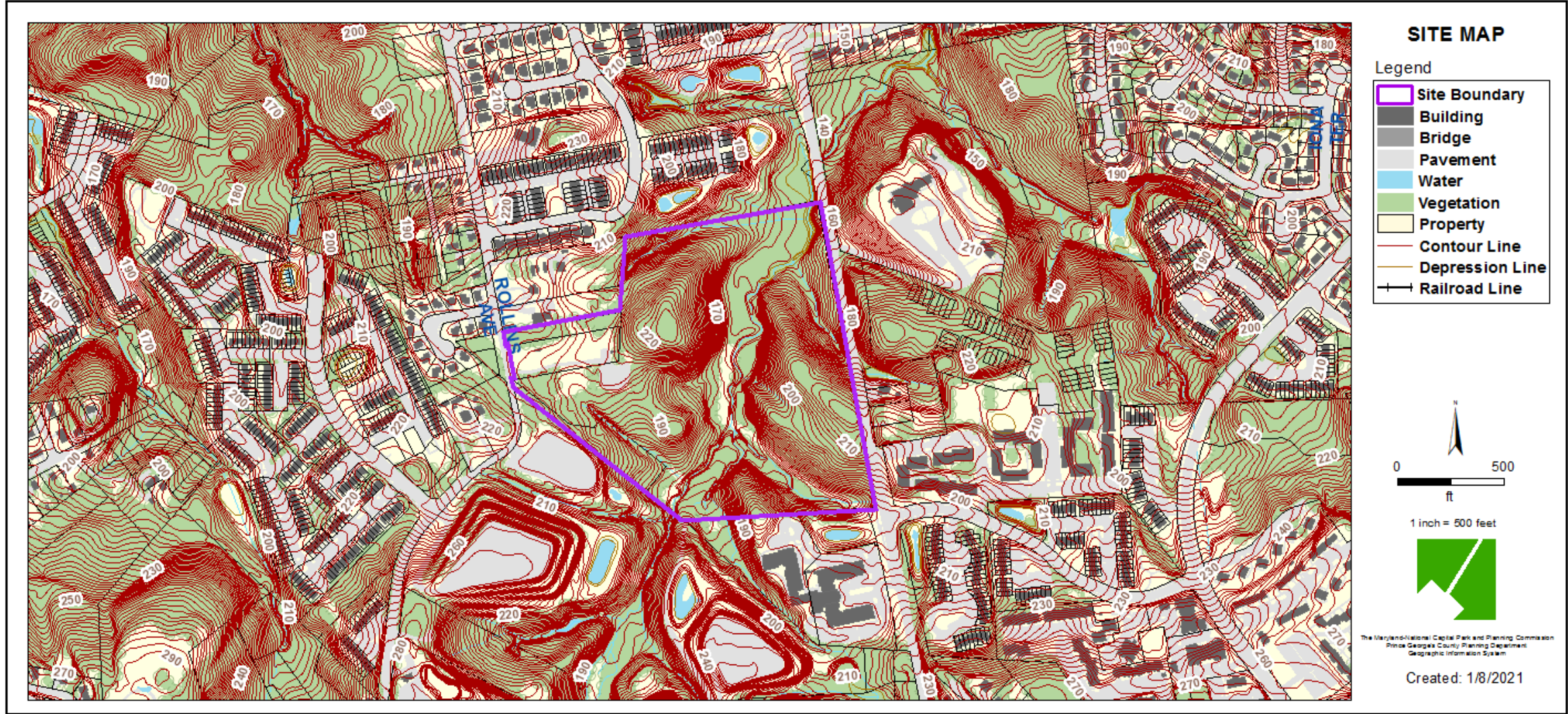


# AERIAL MAP



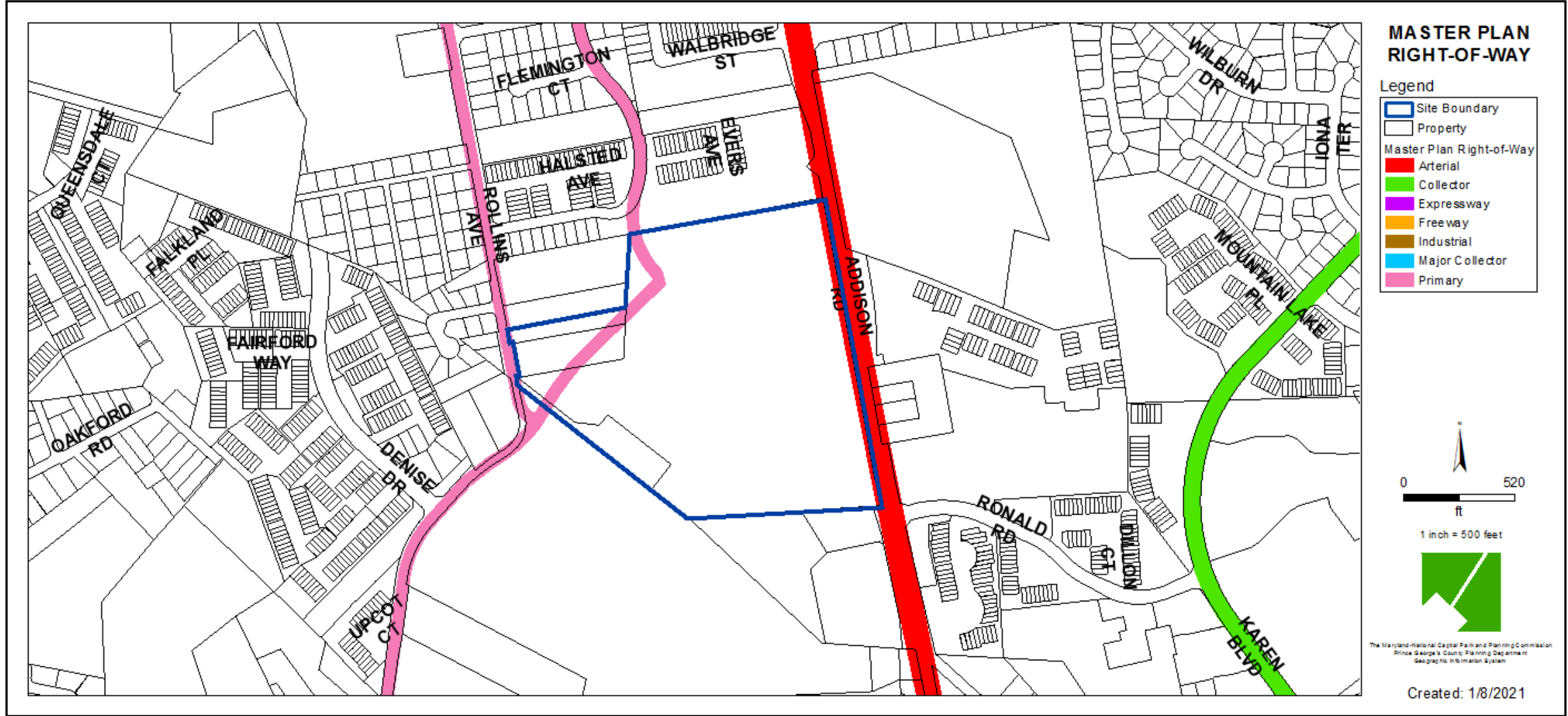


# SITE MAP



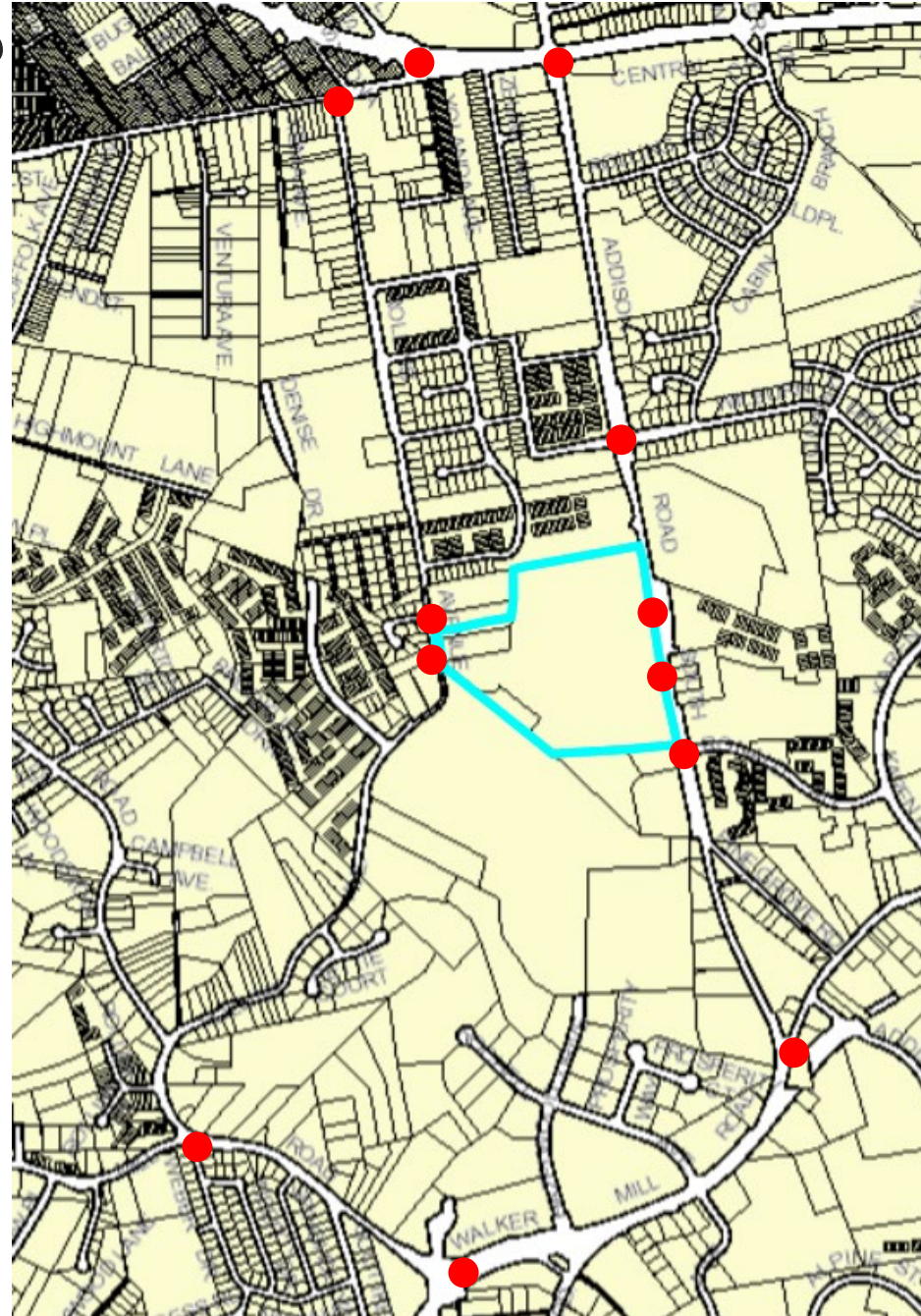


# MASTER PLAN RIGHT-OF-WAY MAP

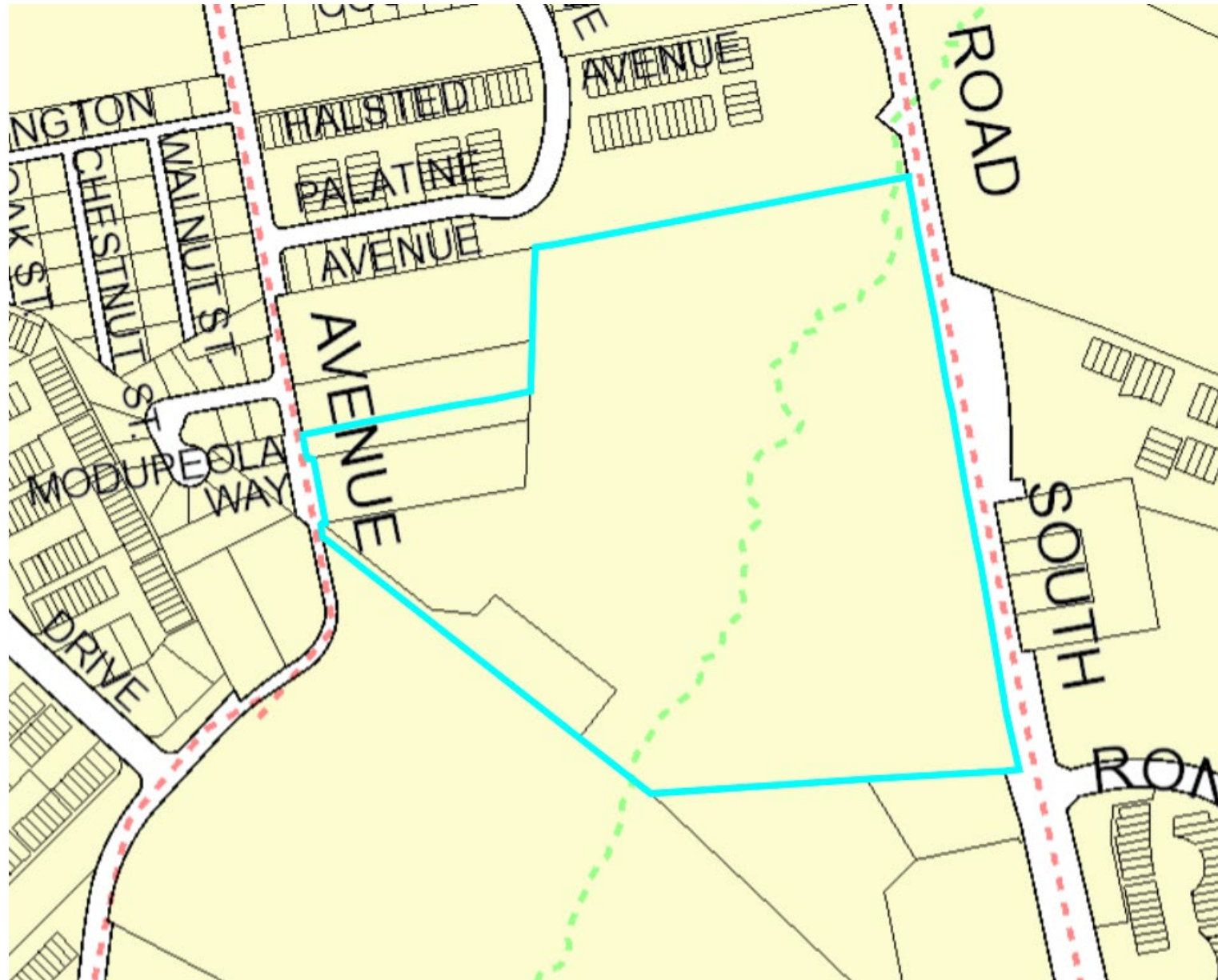




# CRITICAL INTERSECTIONS

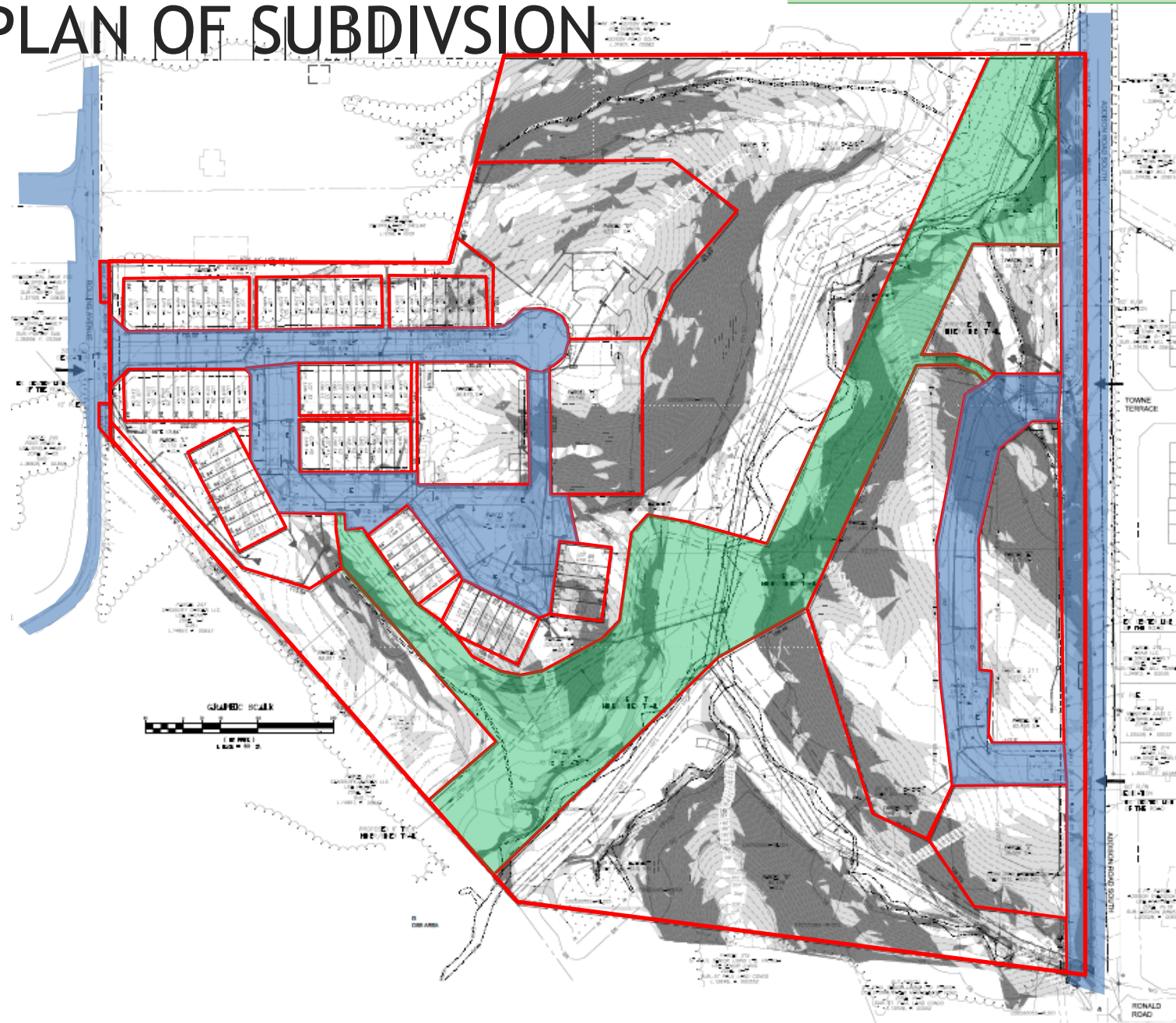


# MASTER PLAN TRAILS

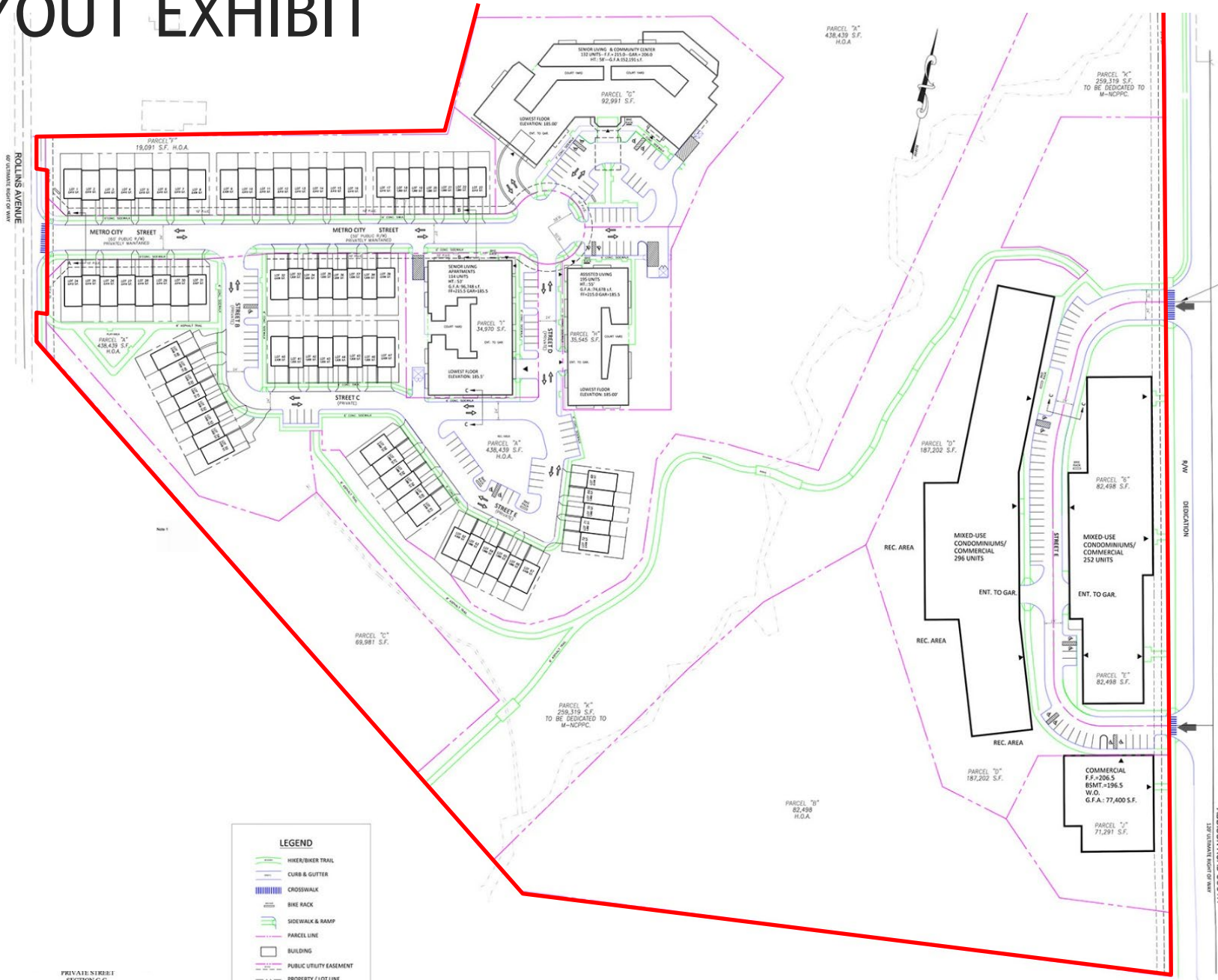




# PRELIMINARY PLAN OF SUBDIVISION

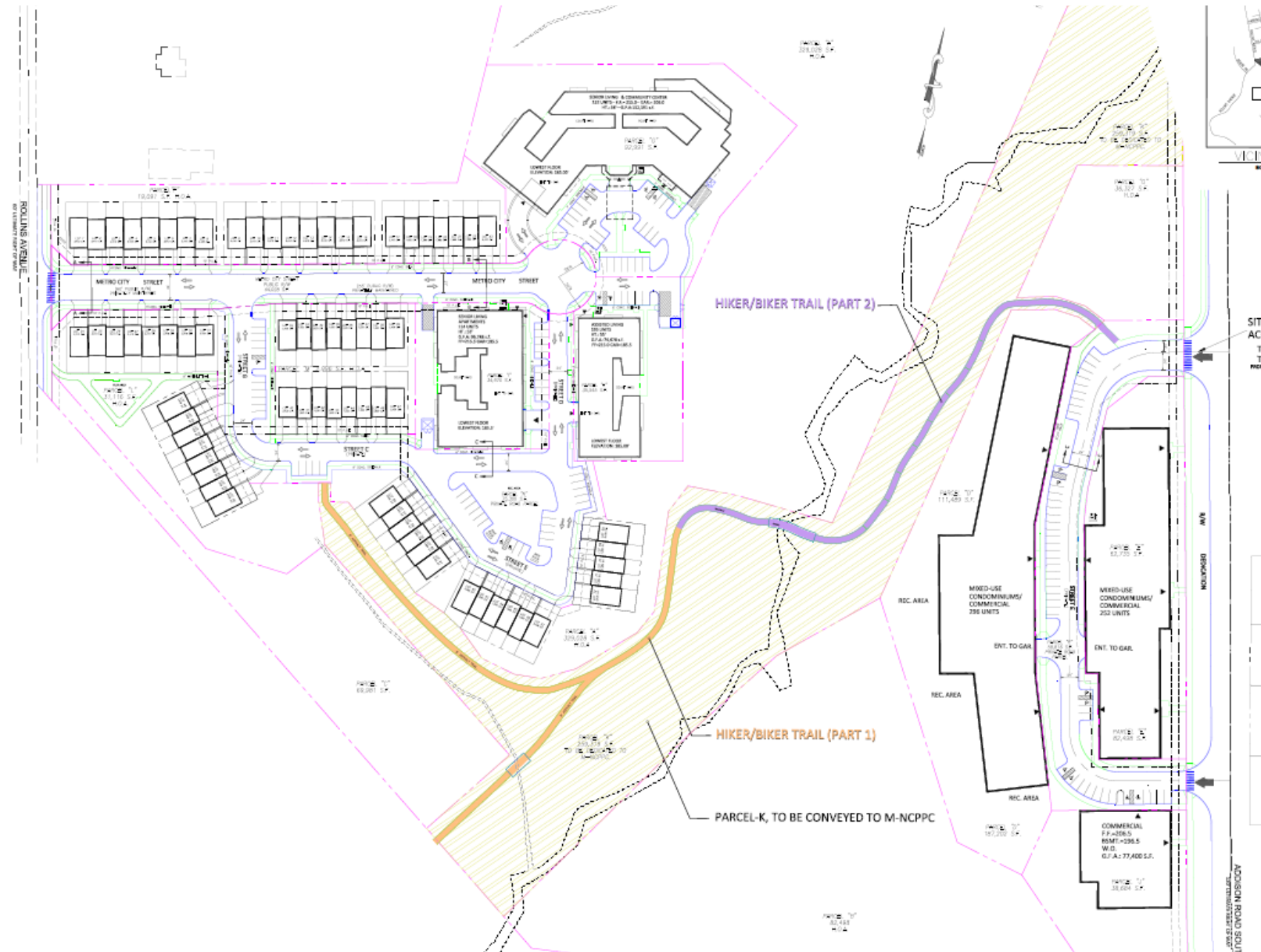


# SITE LAYOUT EXHIBIT





# APPLICANT'S HIKER/BIKER TRAIL EXHIBIT

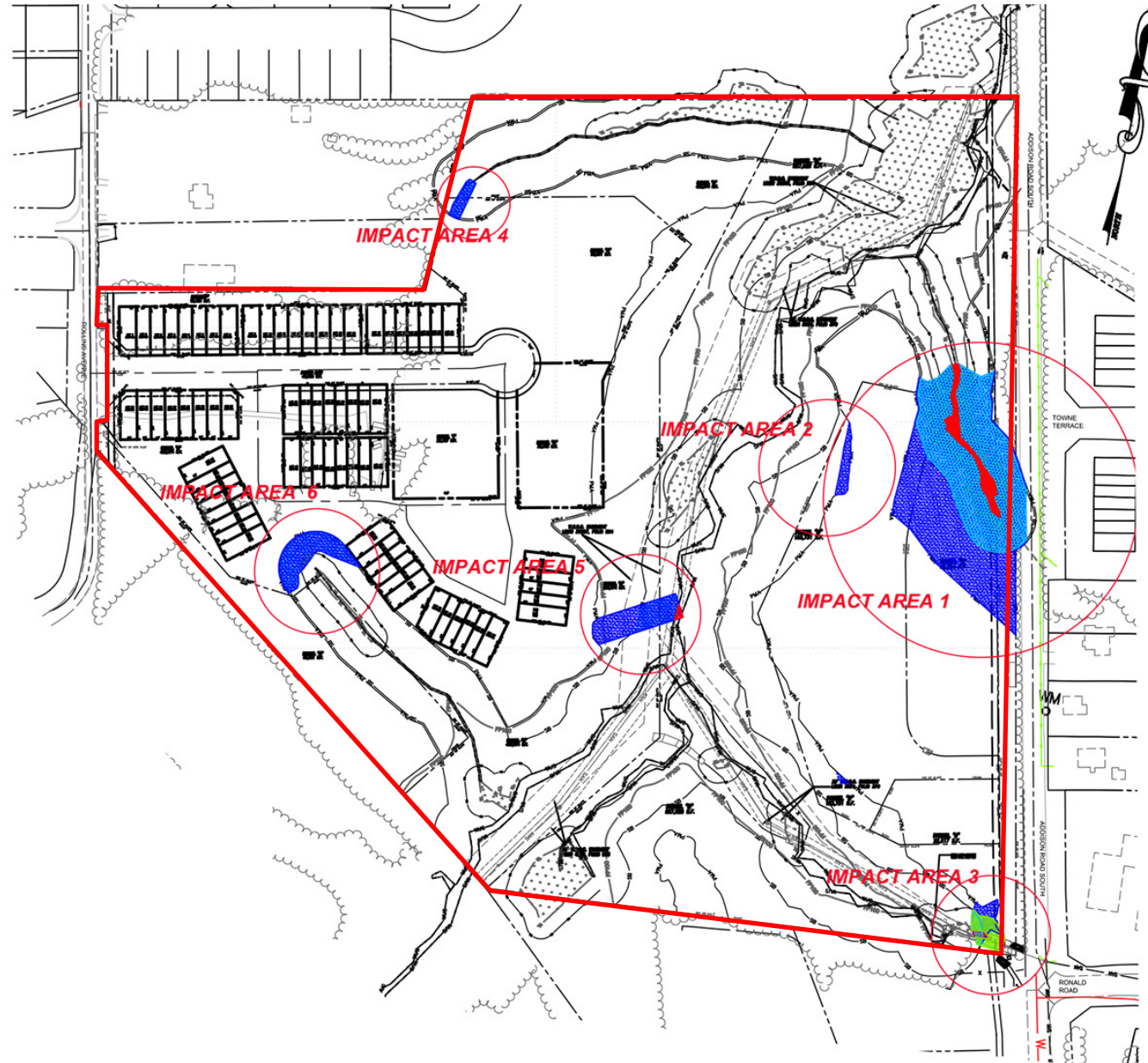


# OVERALL TYPE I TREE CONSERVATION PLAN









# OVERALL ENVIRONMENTAL IMPACT EXHIBIT

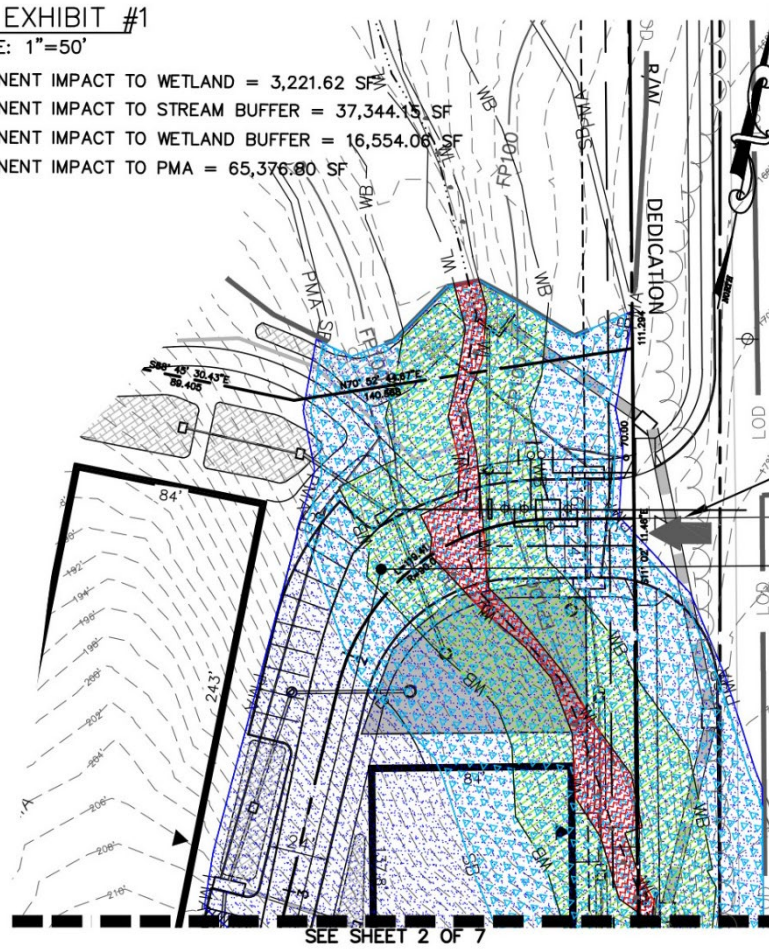


# IMPACT EXHIBIT 1

IMPACT EXHIBIT #1





SCALE: 1"=50'

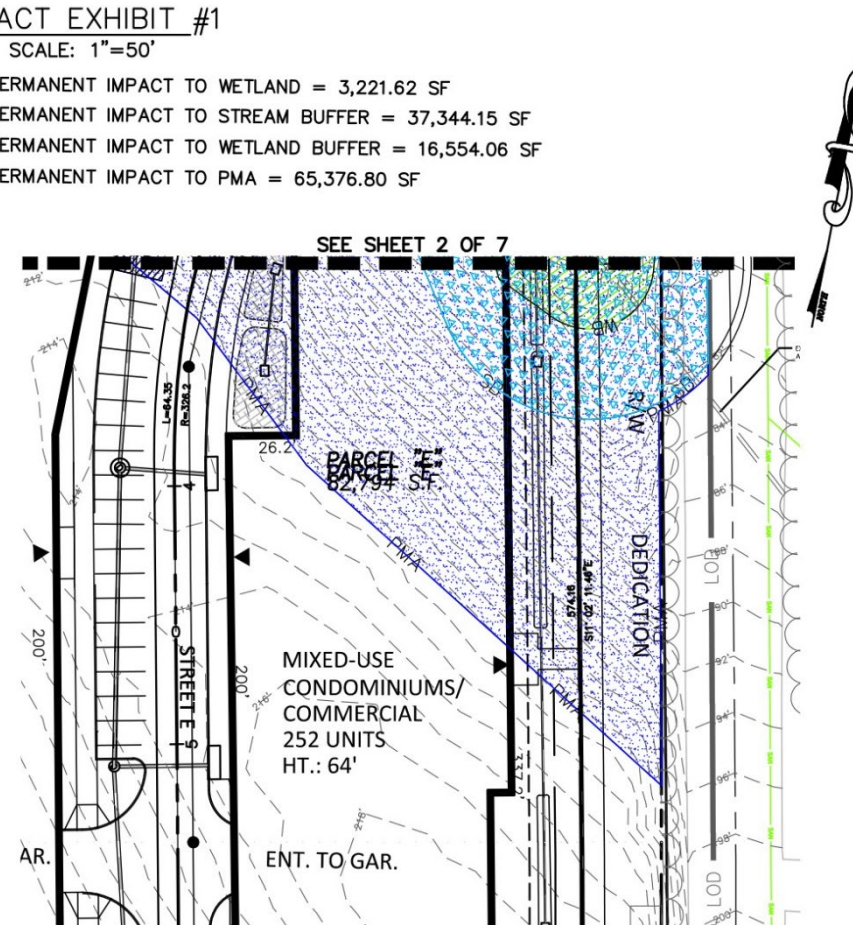
-  PERMANENT IMPACT TO WETLAND = 3,221.62 SF
-  PERMANENT IMPACT TO STREAM BUFFER = 37,344.15 SF
-  PERMANENT IMPACT TO WETLAND BUFFER = 16,554.06 SF
-  PERMANENT IMPACT TO PMA = 65,376.80 SF



IMPACT EXHIBIT #1

SCALE: 1"=50'

-  PERMANENT IMPACT TO WETLAND = 3,221.62 SF
-  PERMANENT IMPACT TO STREAM BUFFER = 37,344.15 SF
-  PERMANENT IMPACT TO WETLAND BUFFER = 16,554.06 SF
-  PERMANENT IMPACT TO PMA = 65,376.80 SF







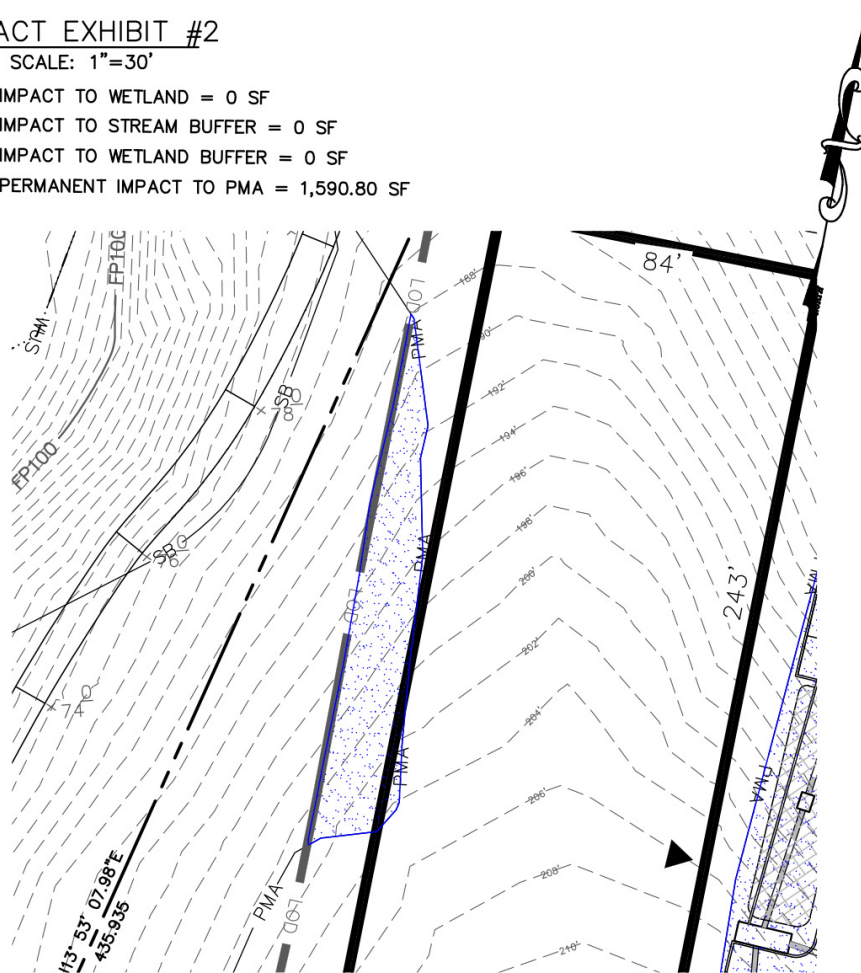


# IMPACT EXHIBIT 2 & 3

## IMPACT EXHIBIT #2





SCALE: 1"=30'

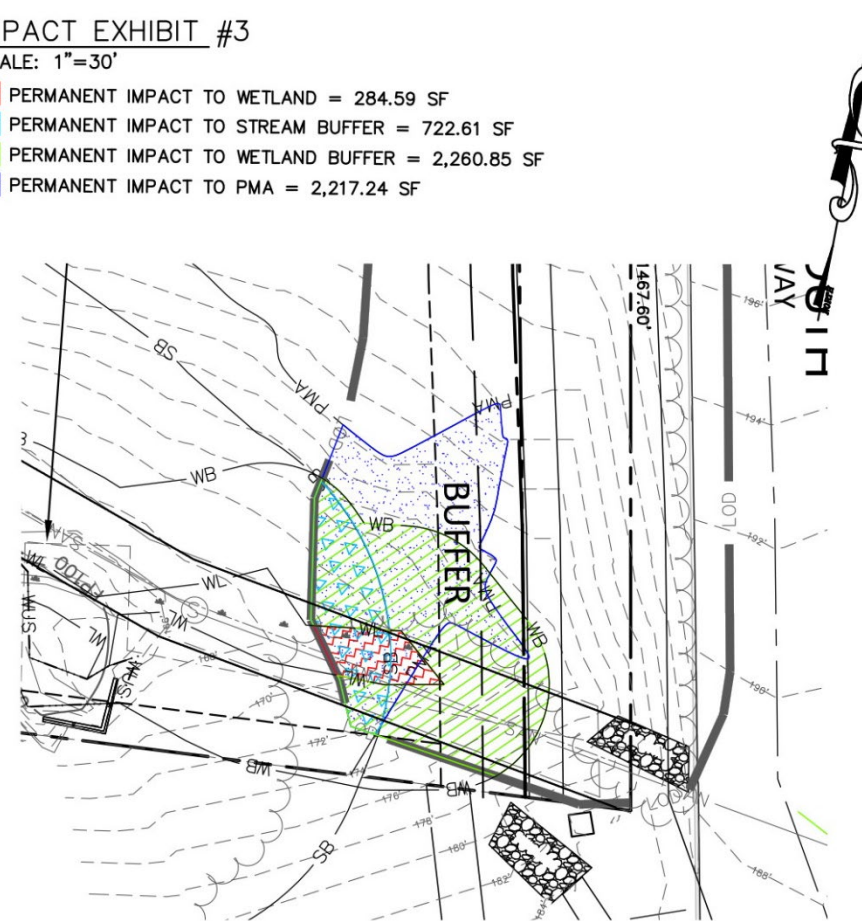
-  IMPACT TO WETLAND = 0 SF
-  IMPACT TO STREAM BUFFER = 0 SF
-  IMPACT TO WETLAND BUFFER = 0 SF
-  PERMANENT IMPACT TO PMA = 1,590.80 SF



## IMPACT EXHIBIT #3

SCALE: 1"=30'





-  PERMANENT IMPACT TO WETLAND = 284.59 SF
-  PERMANENT IMPACT TO STREAM BUFFER = 722.61 SF
-  PERMANENT IMPACT TO WETLAND BUFFER = 2,260.85 SF
-  PERMANENT IMPACT TO PMA = 2,217.24 SF

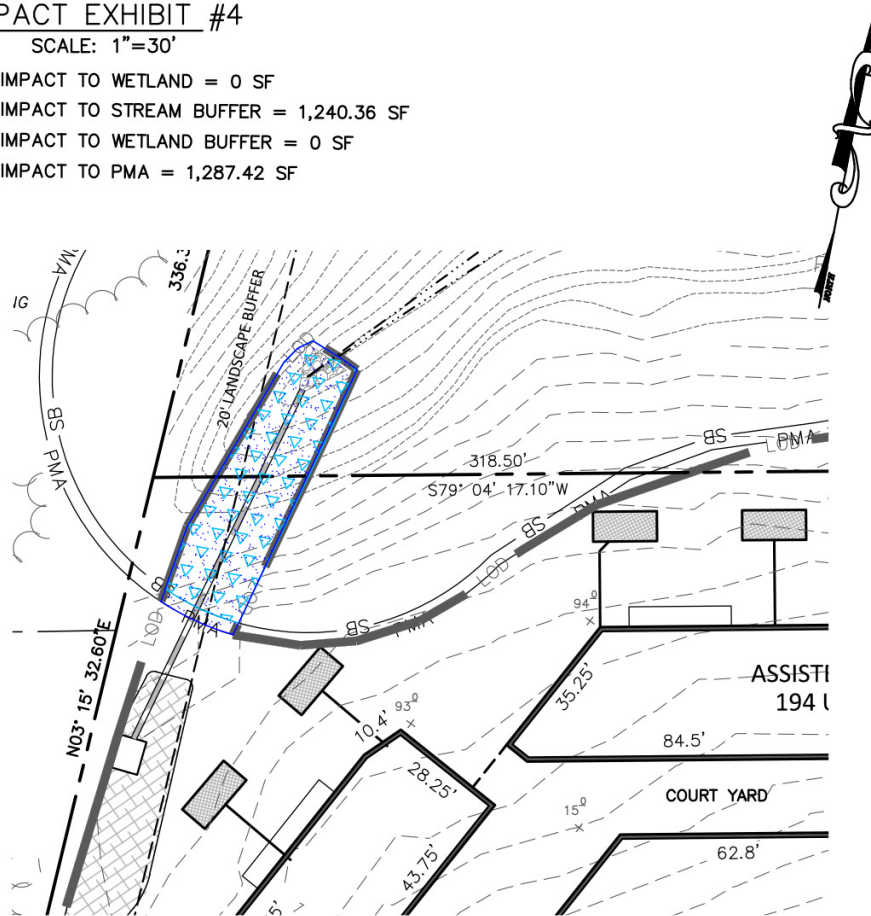


# IMPACT EXHIBIT 4 & 5

## IMPACT EXHIBIT #4





SCALE: 1"=30'

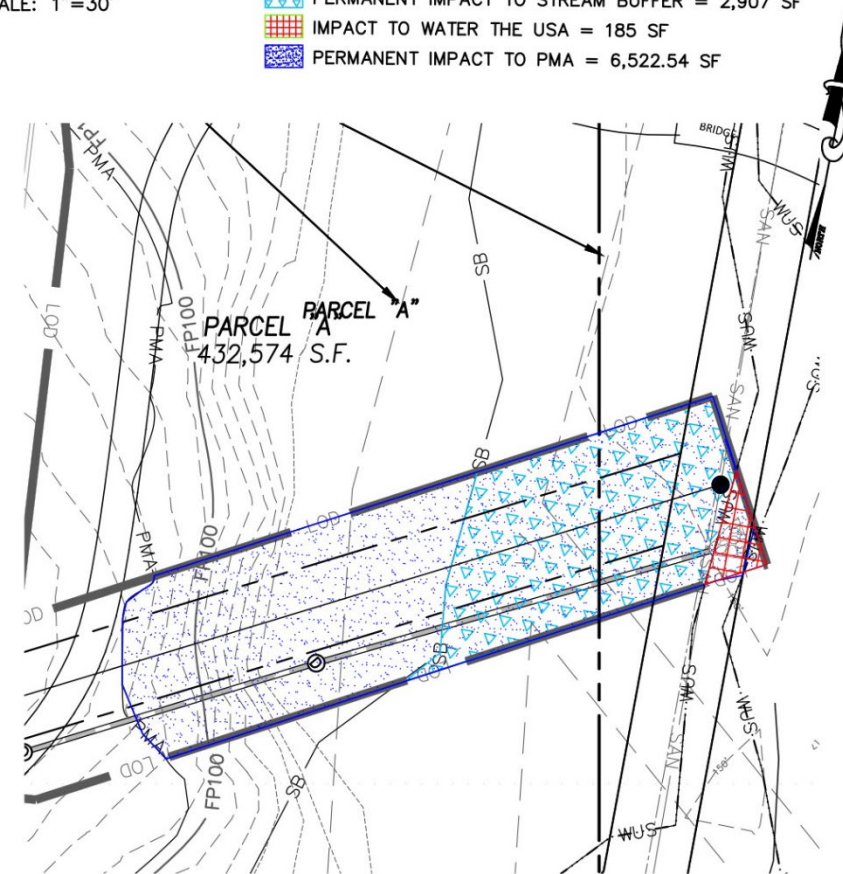
-  IMPACT TO WETLAND = 0 SF
-  IMPACT TO STREAM BUFFER = 1,240.36 SF
-  IMPACT TO WETLAND BUFFER = 0 SF
-  IMPACT TO PMA = 1,287.42 SF



## IMPACT EXHIBIT #5

SCALE: 1"=30'





-  IMPACT TO WETLAND = 0 SF
-  PERMANENT IMPACT TO STREAM BUFFER = 2,907 SF
-  IMPACT TO WATER THE USA = 185 SF
-  PERMANENT IMPACT TO PMA = 6,522.54 SF



# IMPACT EXHIBIT 6

## IMPACT EXHIBIT #6

SCALE: 1"=50'

-  IMPACT TO WETLAND = 0 SF
-  PERMANENT IMPACT TO STREAM BUFFER = 5,372 SF
-  PERMANENT IMPACT TO WETLAND BUFFER = 213 SF
-  PERMANENT IMPACT TO PMA = 6,096 SF

