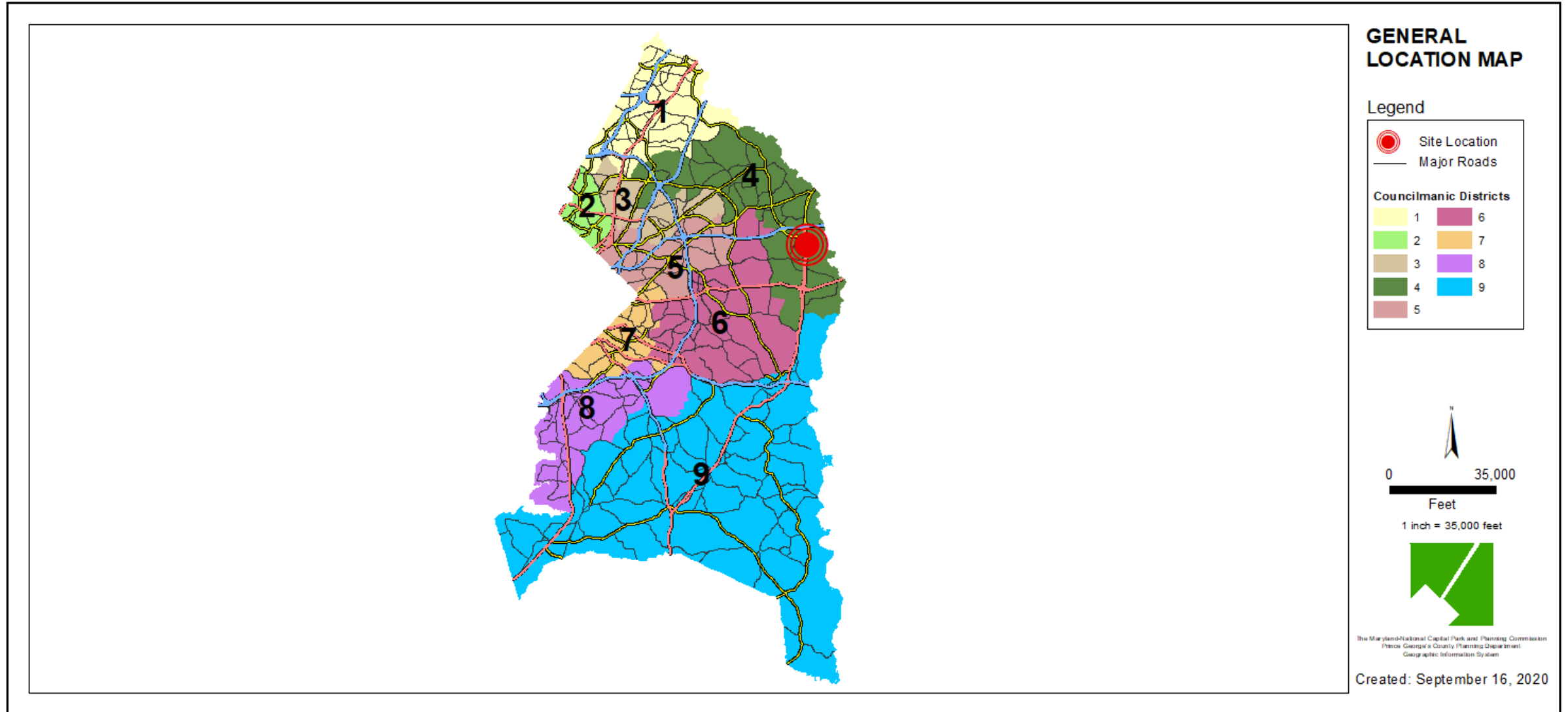


ITEM: 7  
CASE: 4-19050

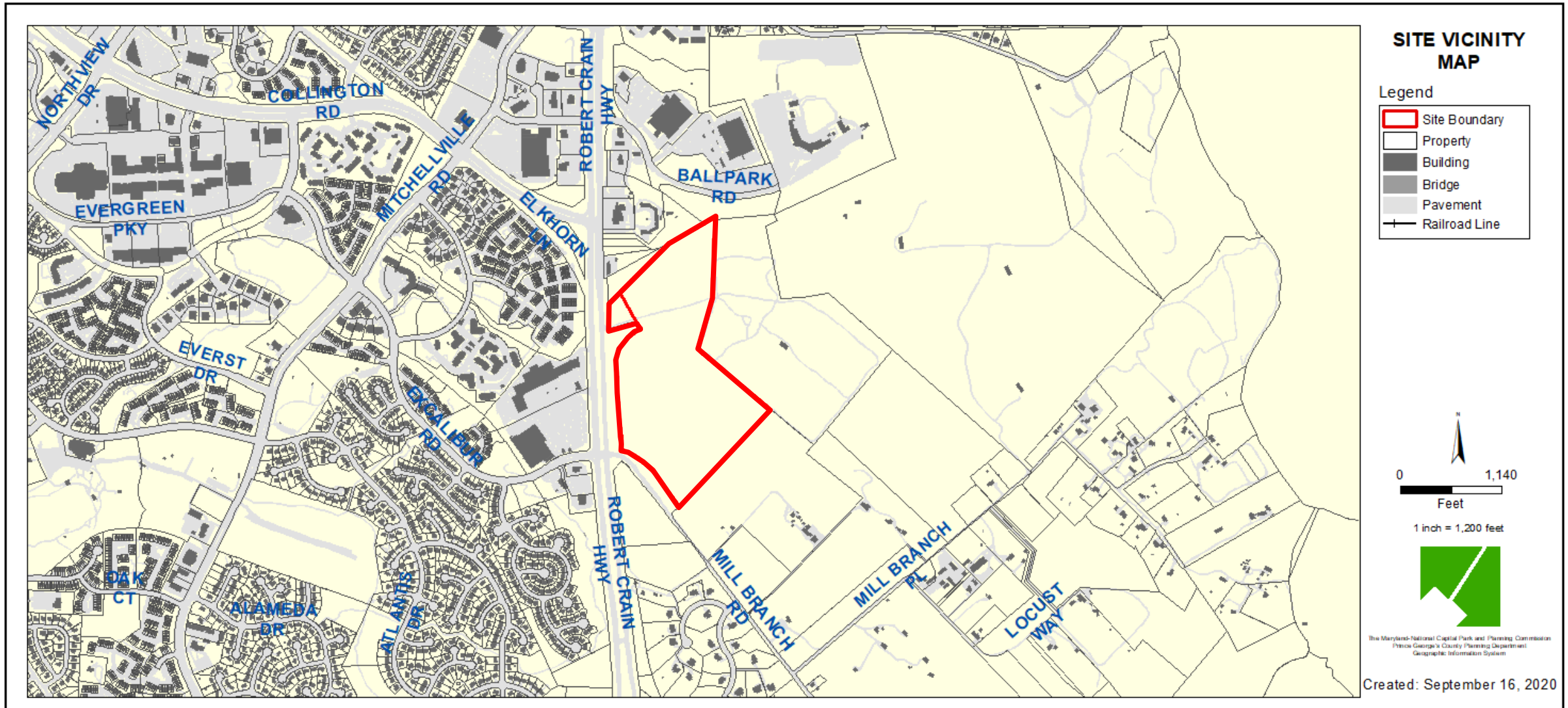
## MILL BRANCH CROSSING

THE PRINCE GEORGE'S COUNTY PLANNING DEPARTMENT

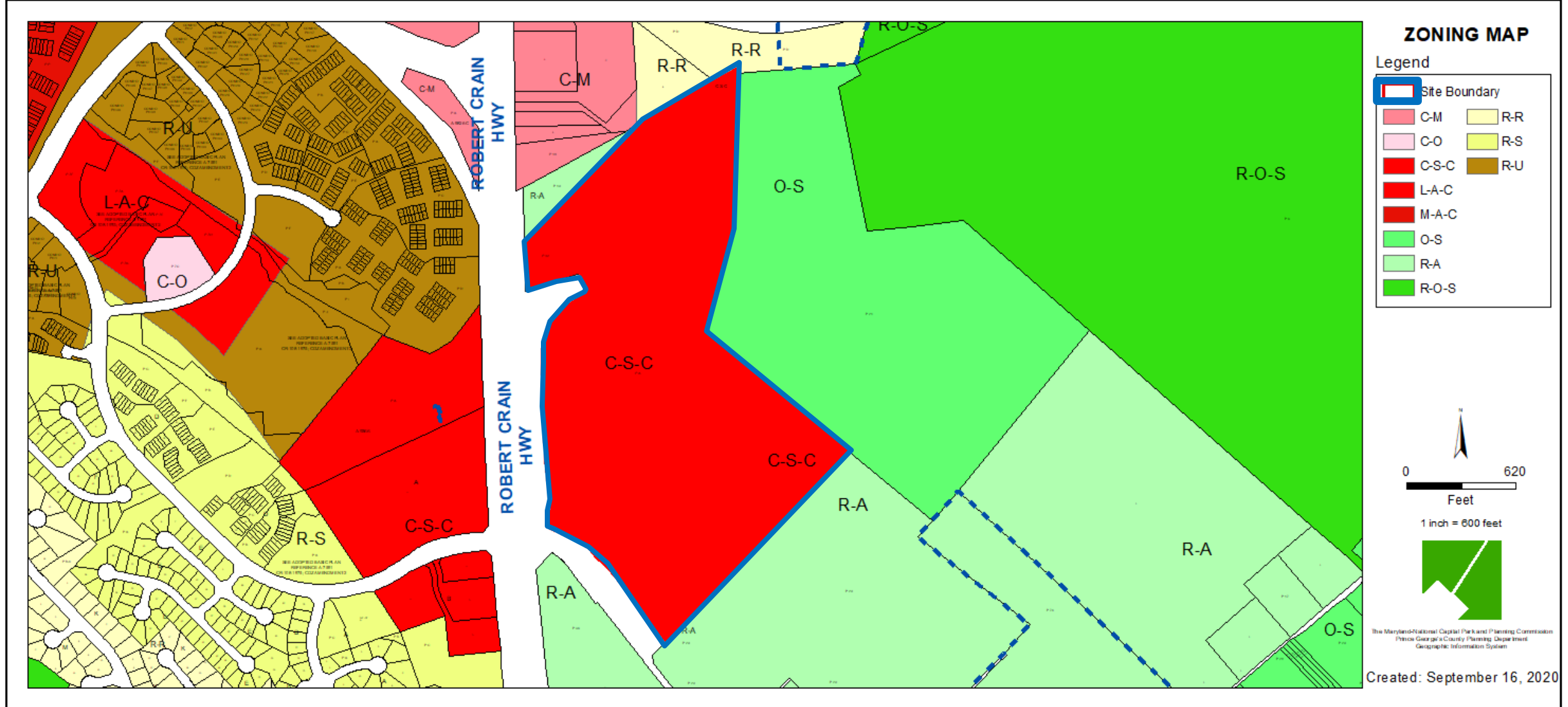
# GENERAL LOCATION MAP



# SITE VICINITY



# ZONING MAP





# AERIAL MAP



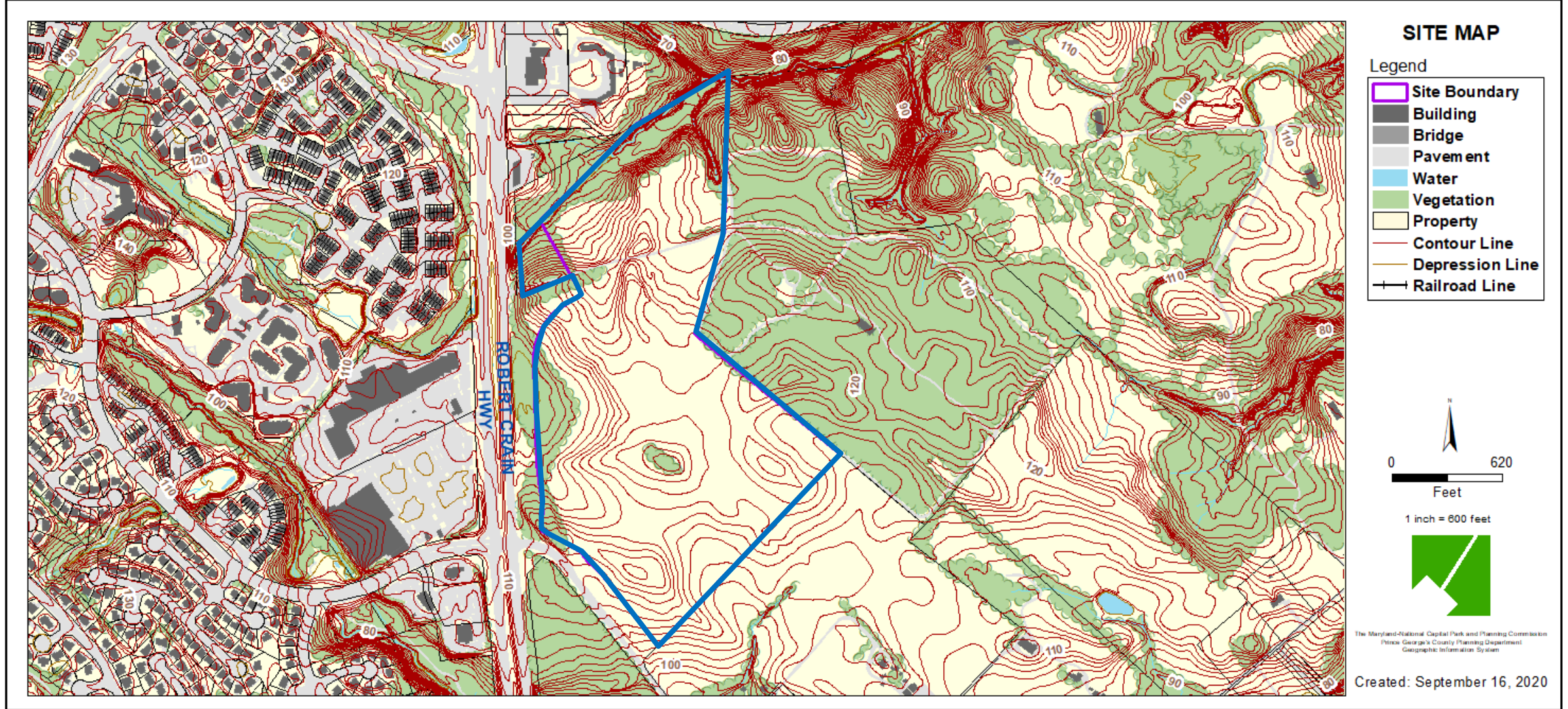


# BIRD'S-EYE VIEW WITH APPROXIMATE SITE BOUNDARY OUTLINED (VIEW FROM WEST)

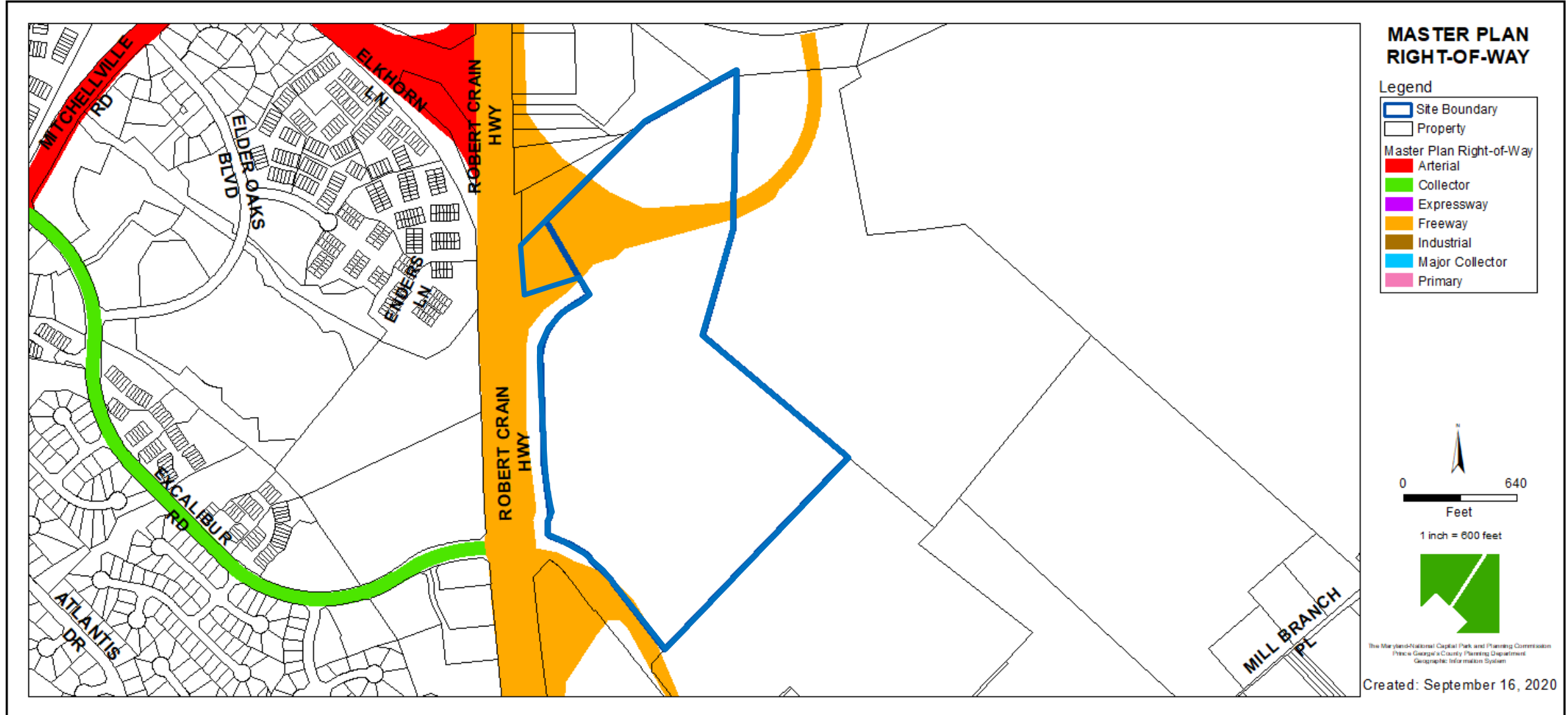




# SITE MAP

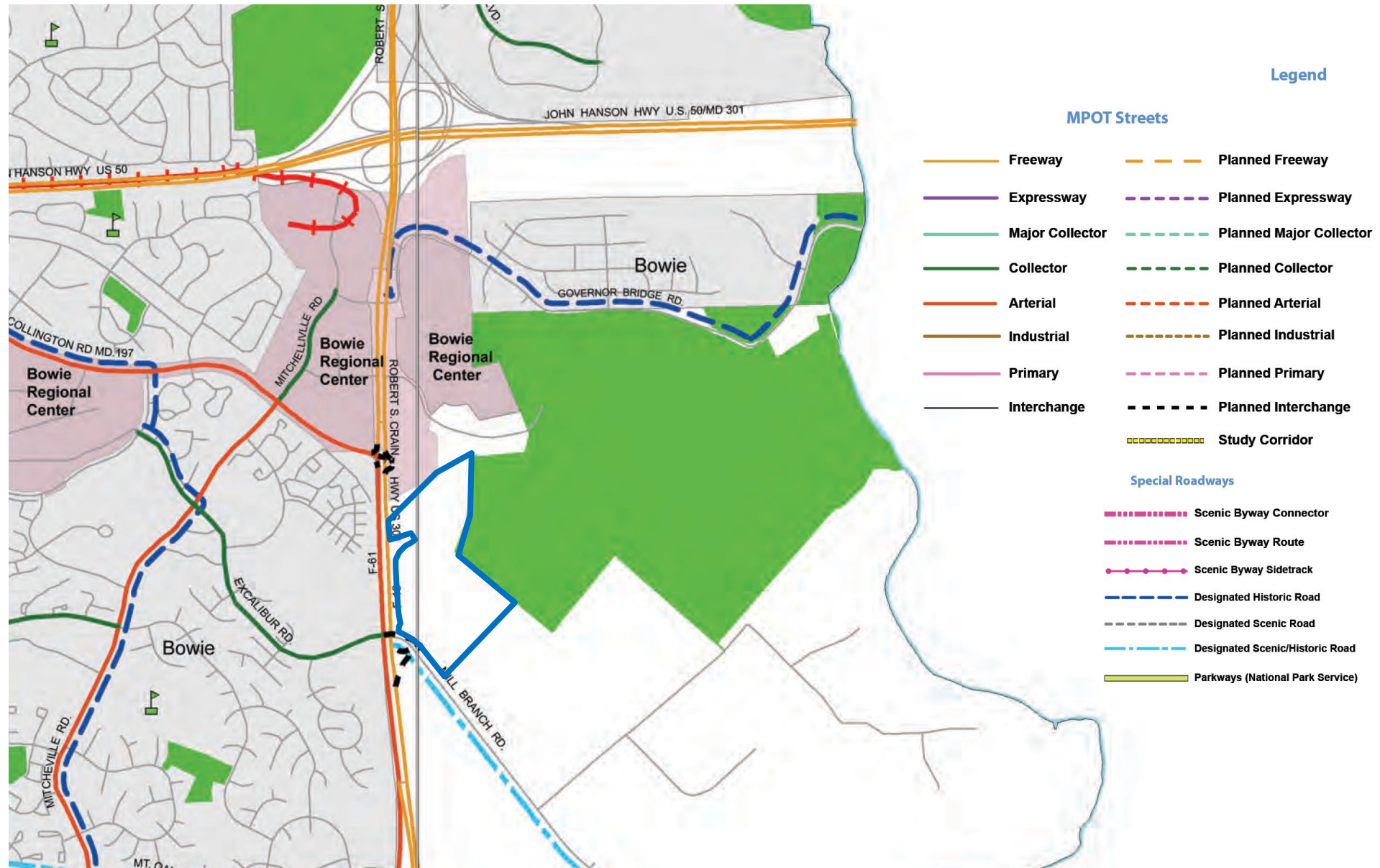


# MASTER PLAN RIGHT-OF-WAY MAP (PER PGATLAS)



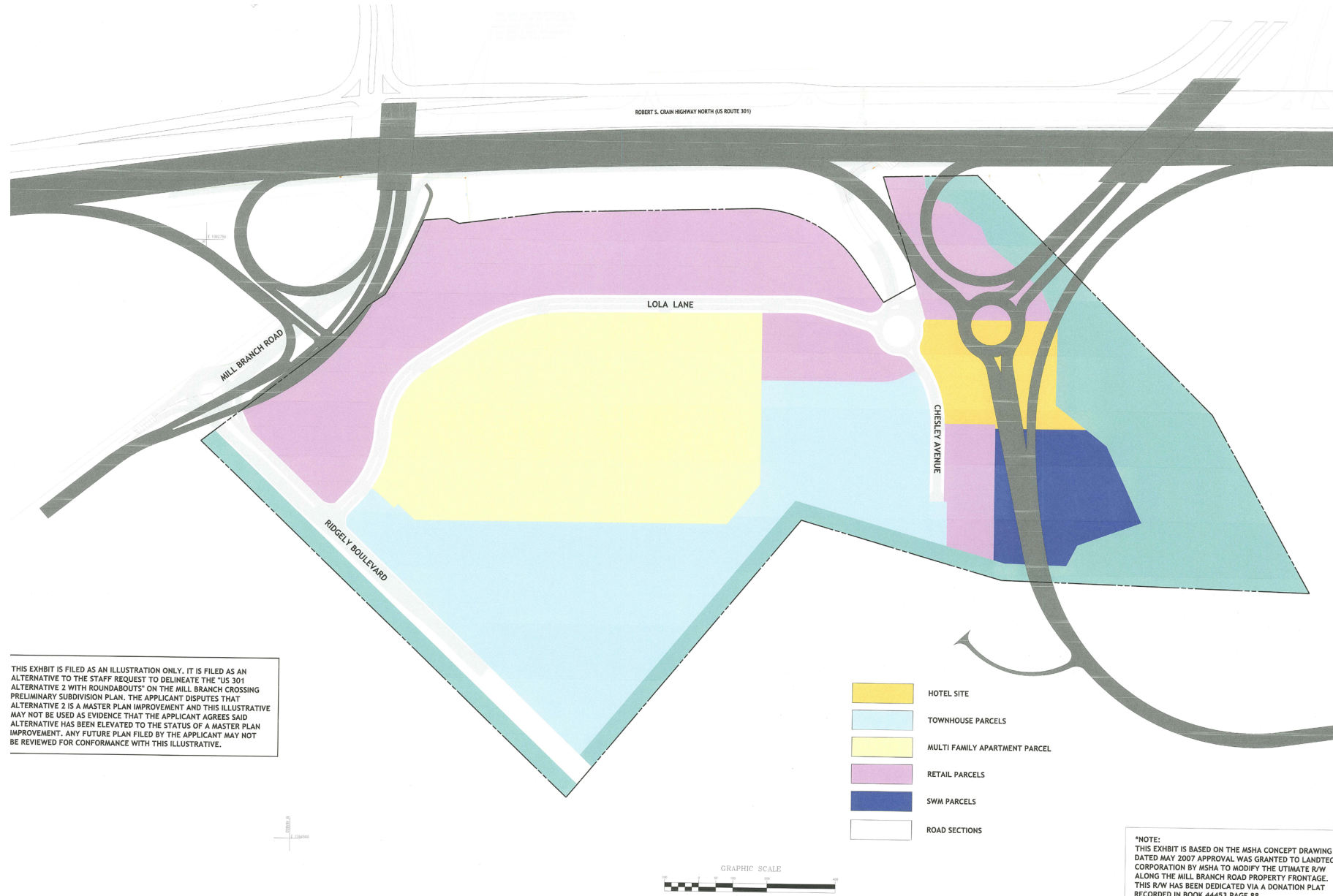


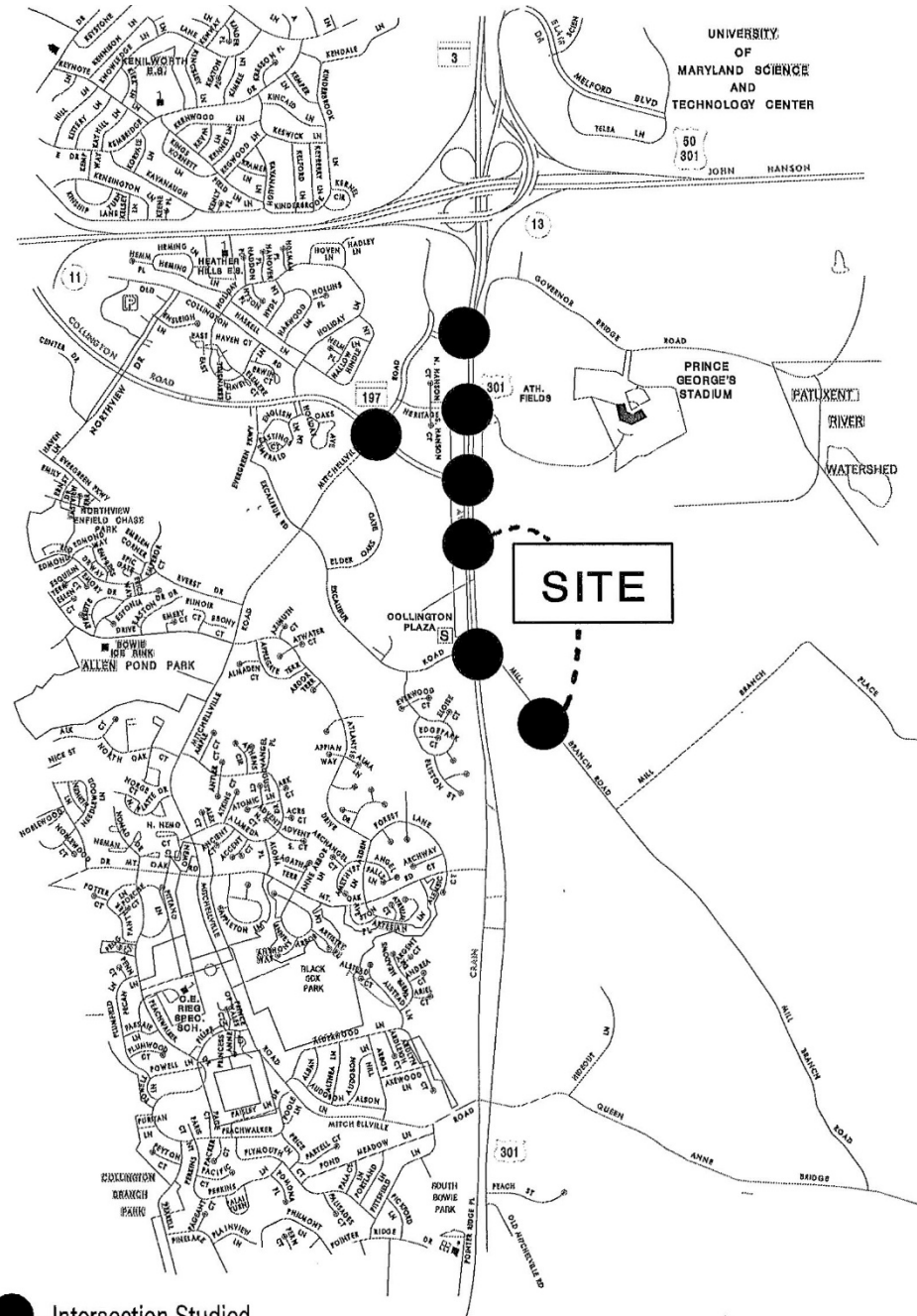
# MASTER PLAN RIGHT-OF-WAY MAP (PER MPOT)



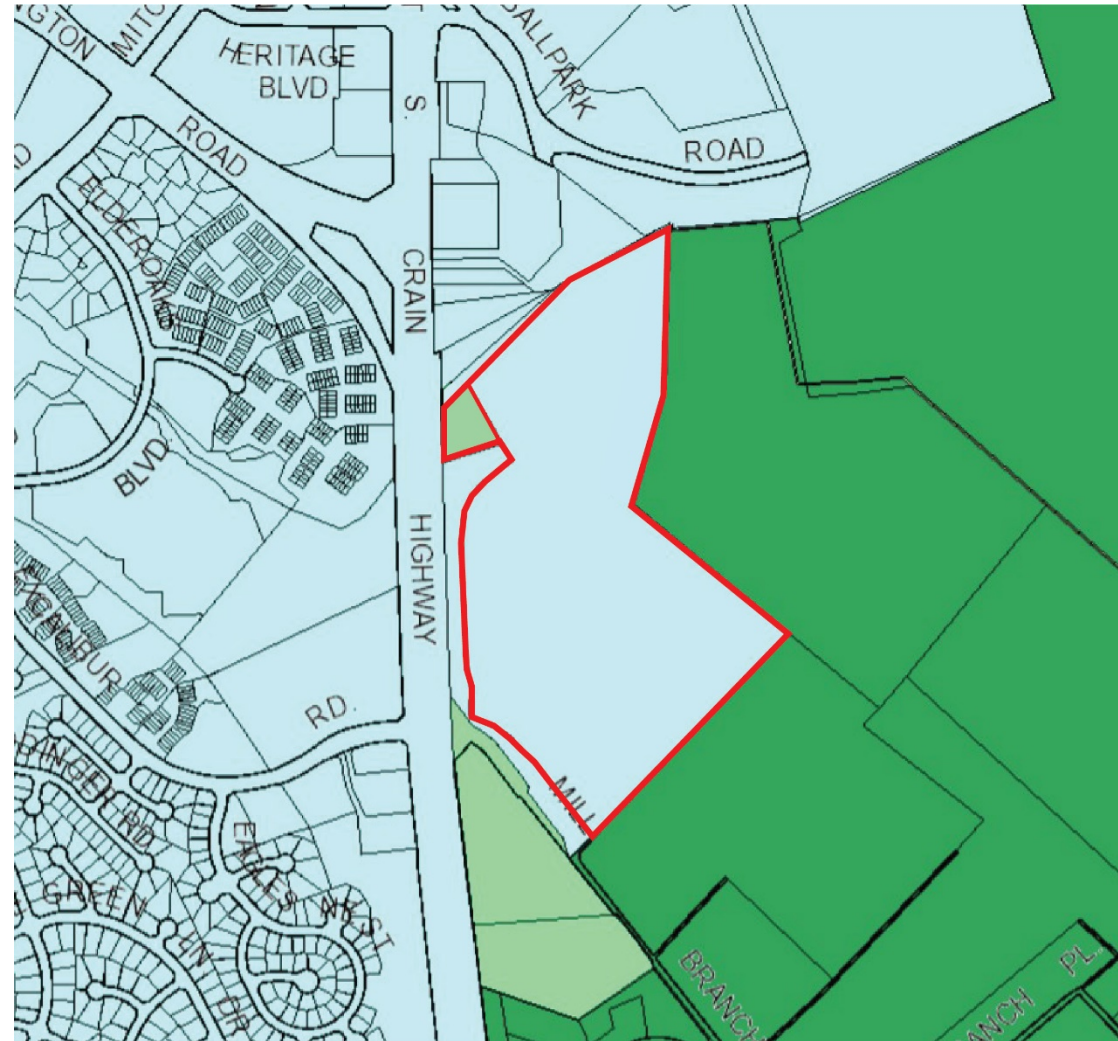


# APPLICANT'S INTERCHANGE LAYOUT EXHIBIT





# CORRECTED EXISTING WATER AND SEWER CATEGORY MAP



Category 3



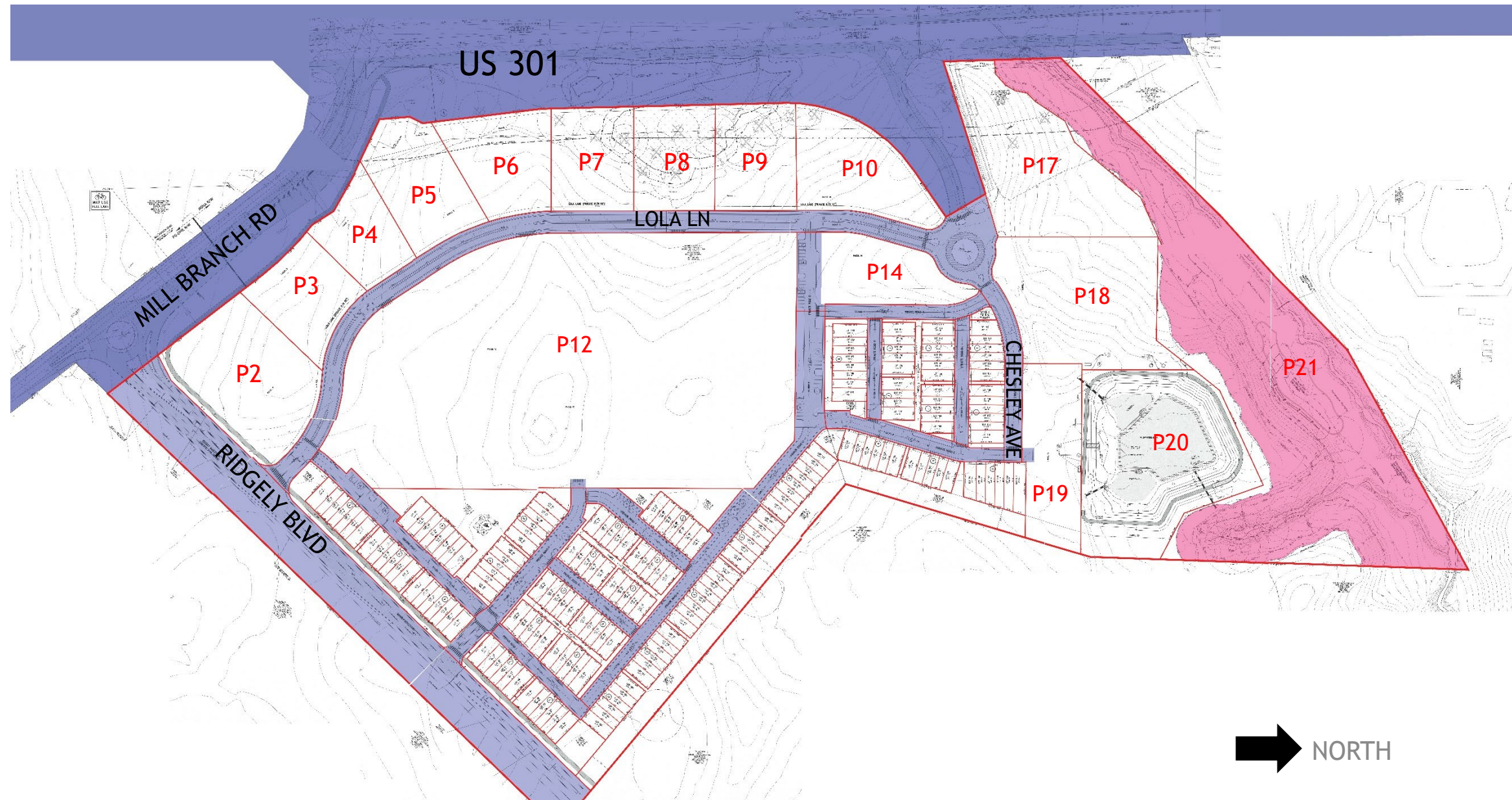
Category 5



Category 6

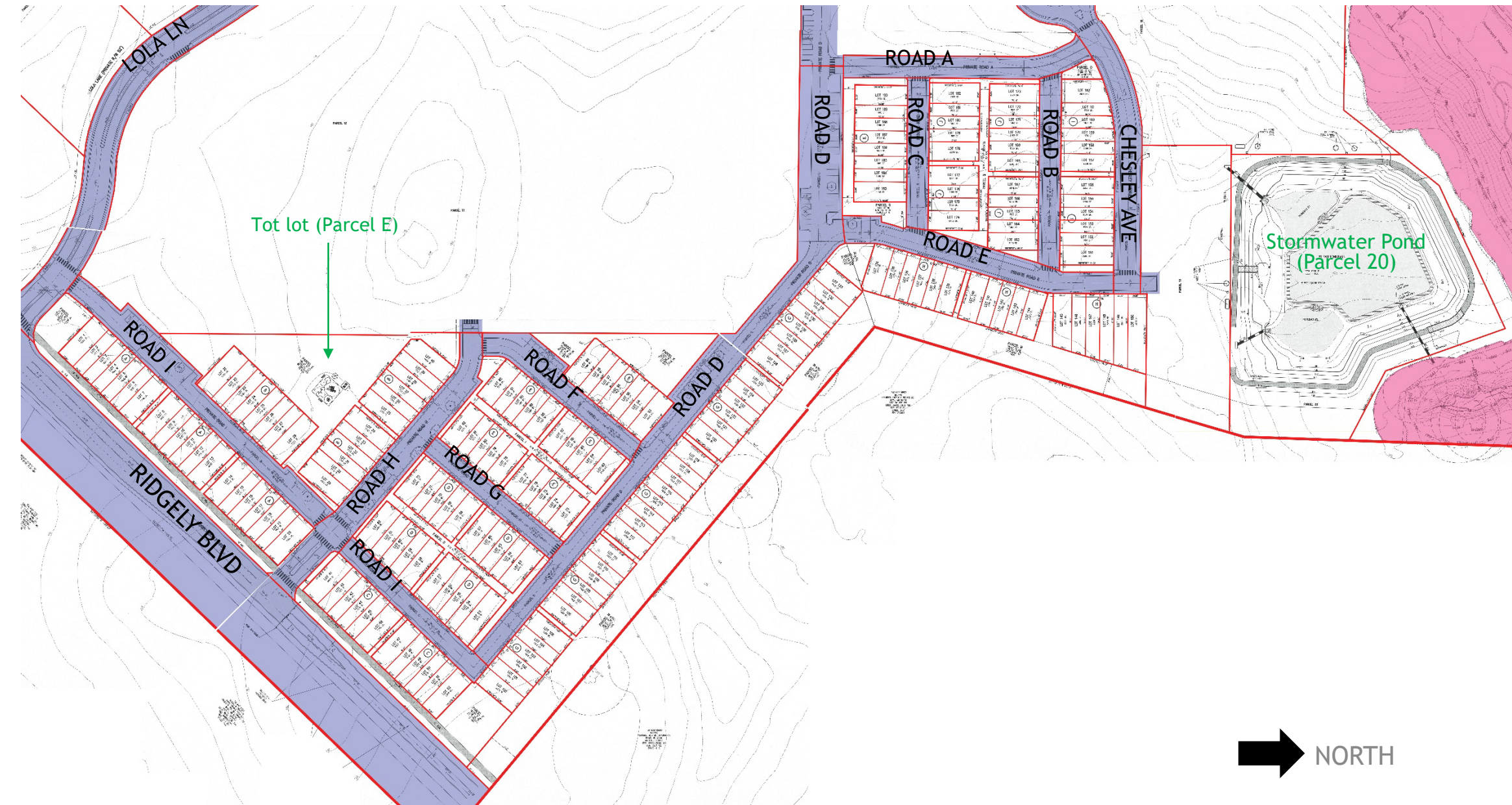


# OVERALL PRELIMINARY PLAN OF SUBDIVISION



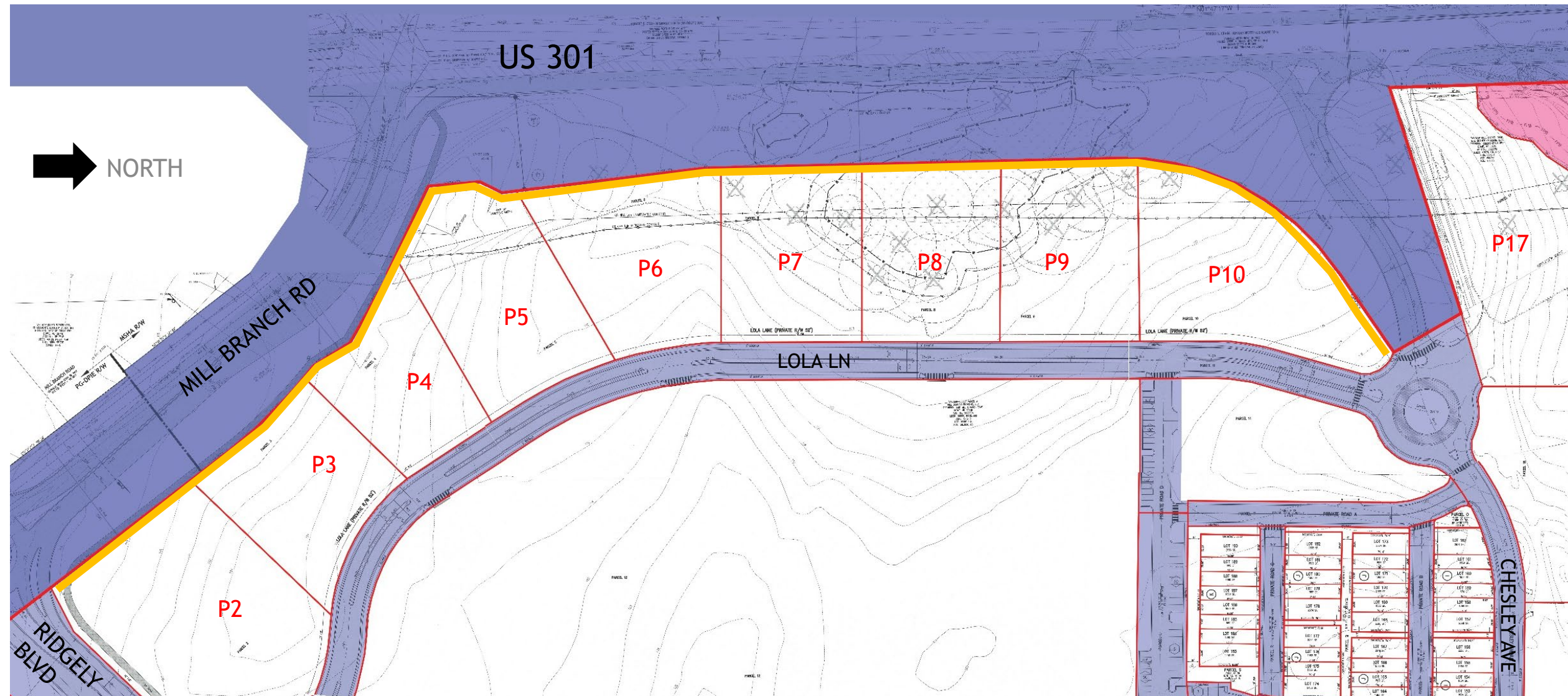


# PRELIMINARY PLAN- TOWNHOUSE DETAIL





# PRELIMINARY PLAN- VARIATIONS DETAIL

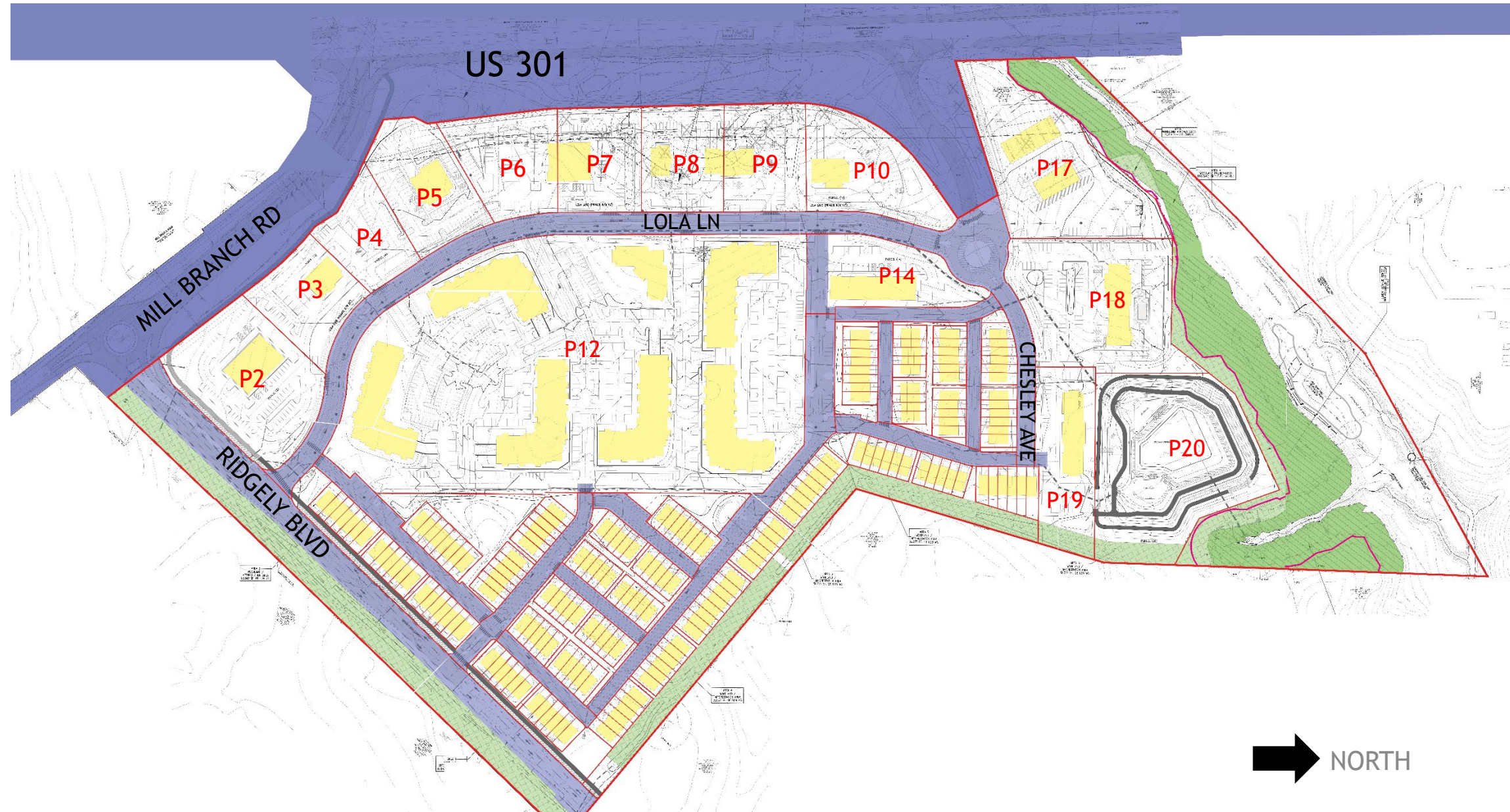






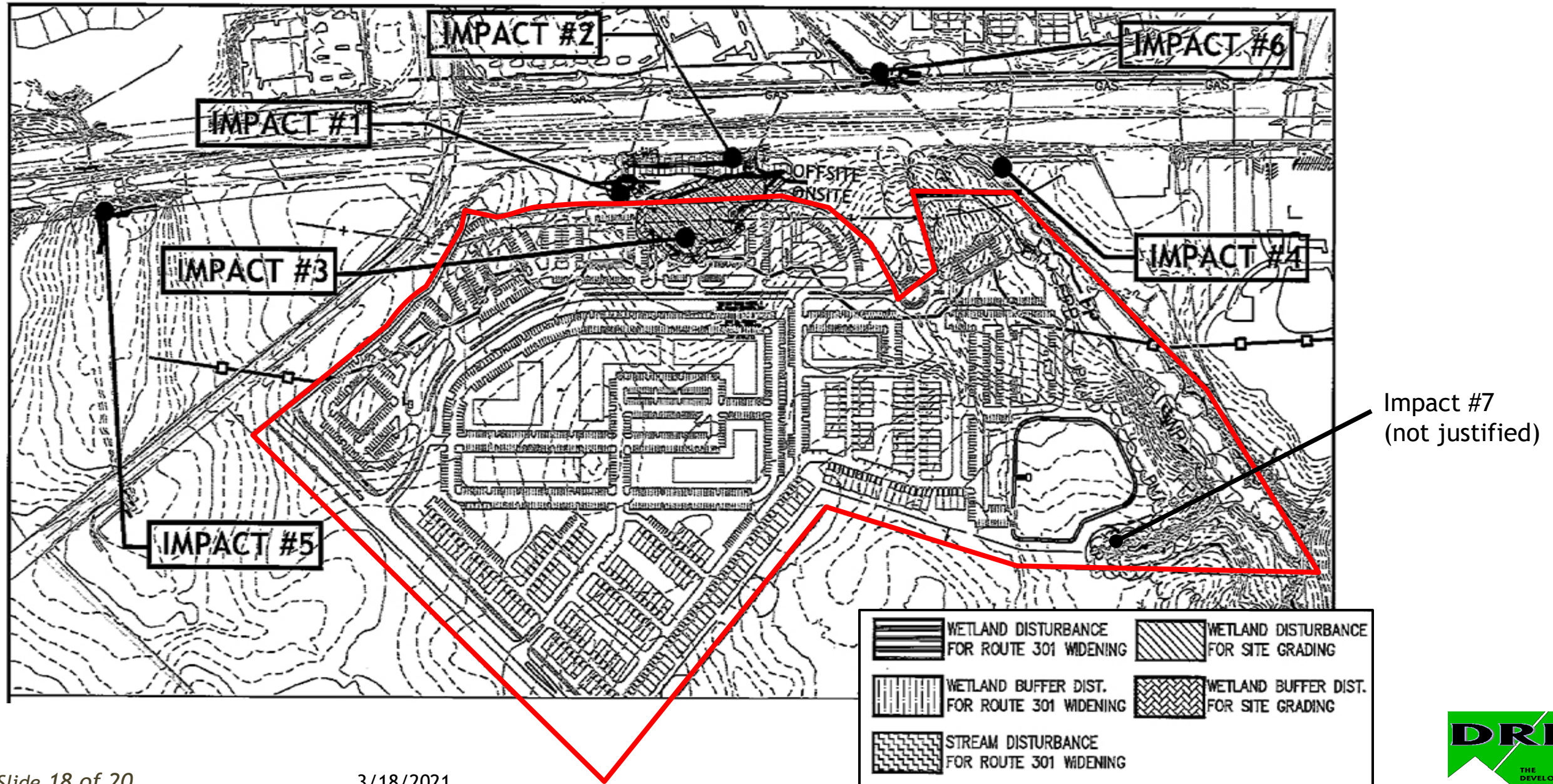


# OVERALL TYPE I TREE CONSERVATION PLAN



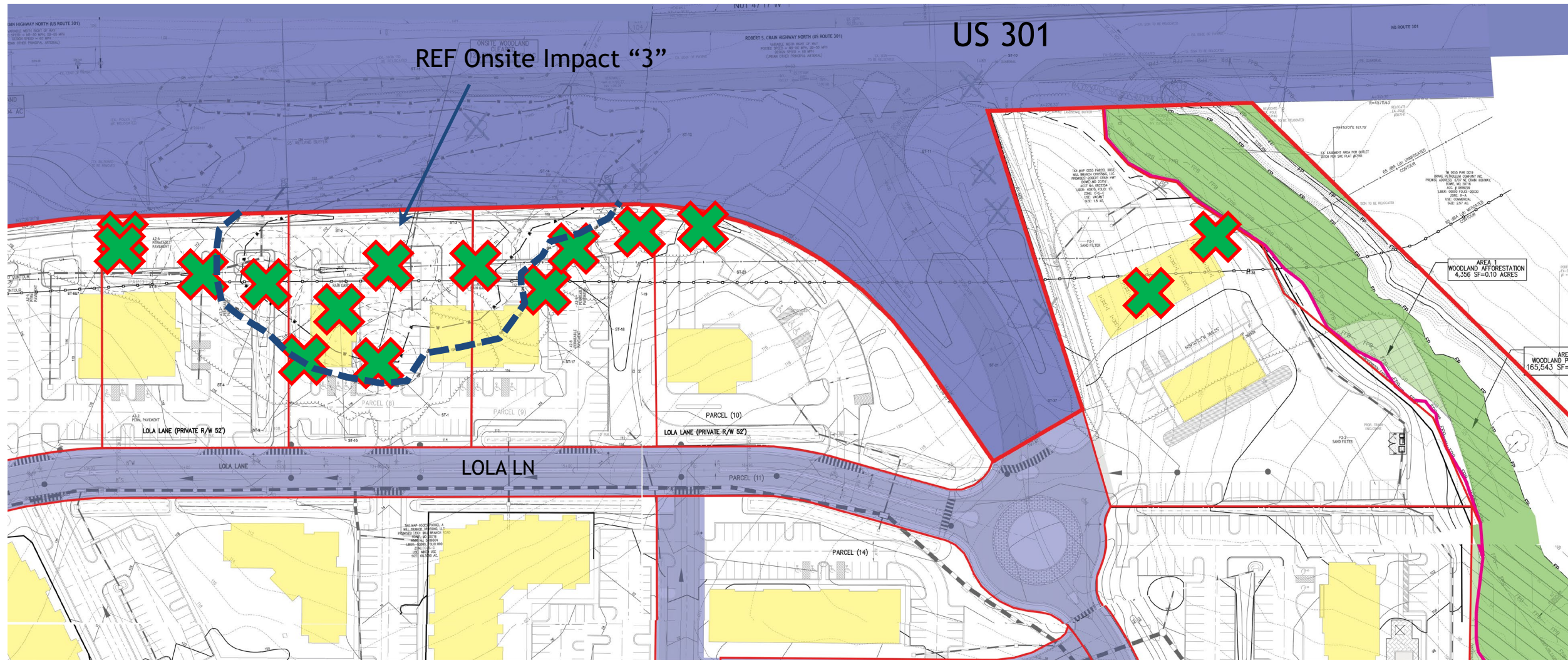


# PROPOSED REF IMPACTS





# TCP1: SPECIMEN TREES AND ONSITE REF IMPACT DETAIL





# TCP1: STORMWATER POND & AMENITIES DETAIL

Picnic areas

Gazebo

Picnic area

Trail

Boardwalk

