

LIW IRONWORKS

Preliminary Plan of Subdivision

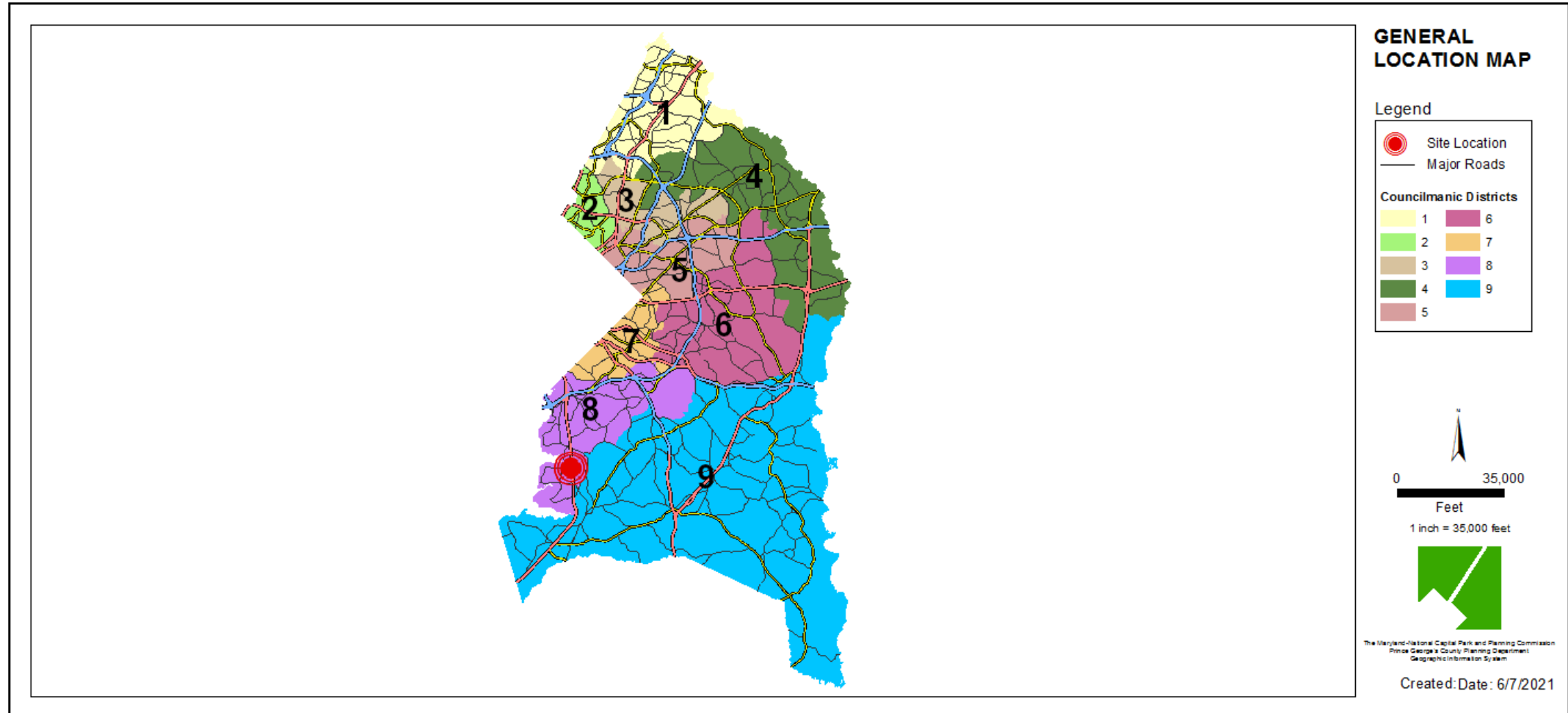
Staff Recommendation: APPROVAL with conditions



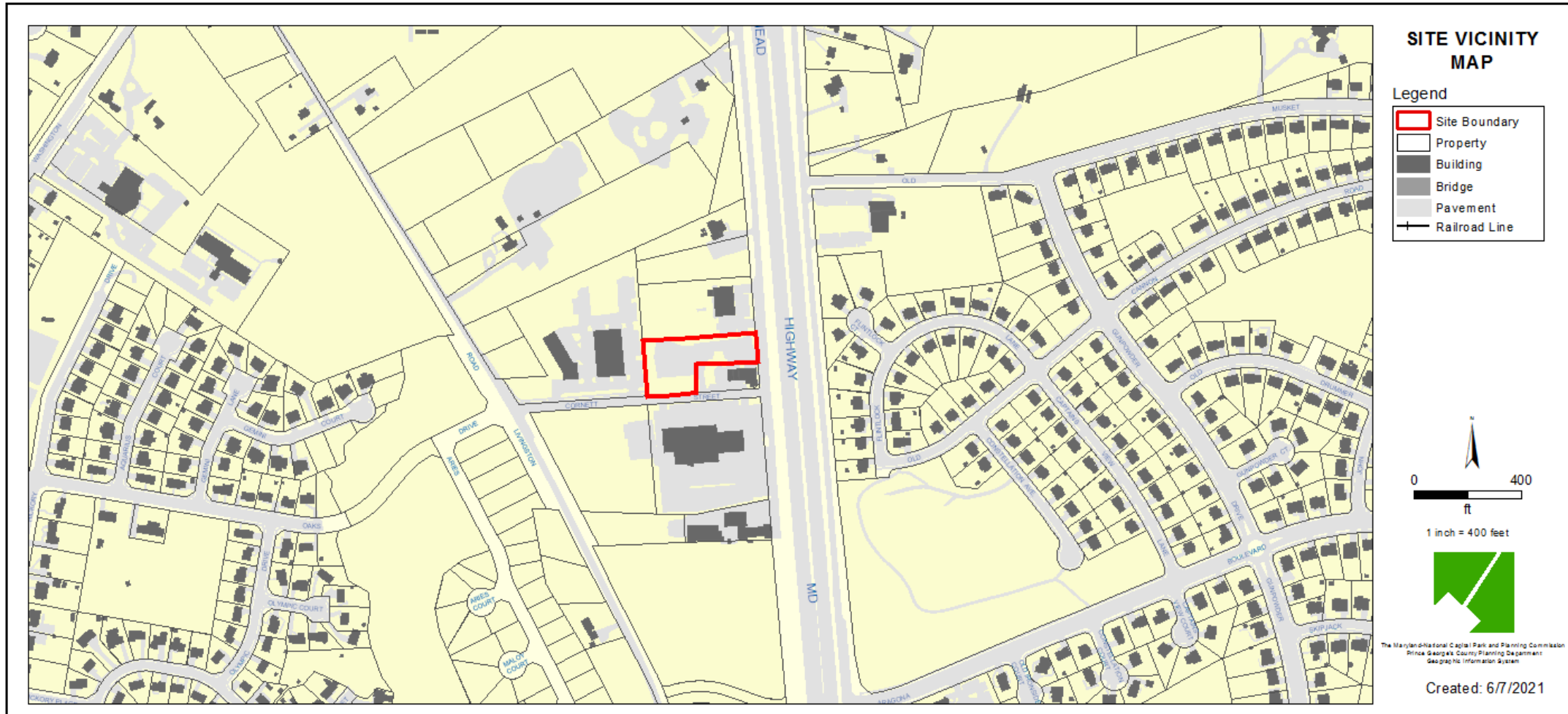
GENERAL LOCATION MAP

Council District: 08

Planning Area: 80

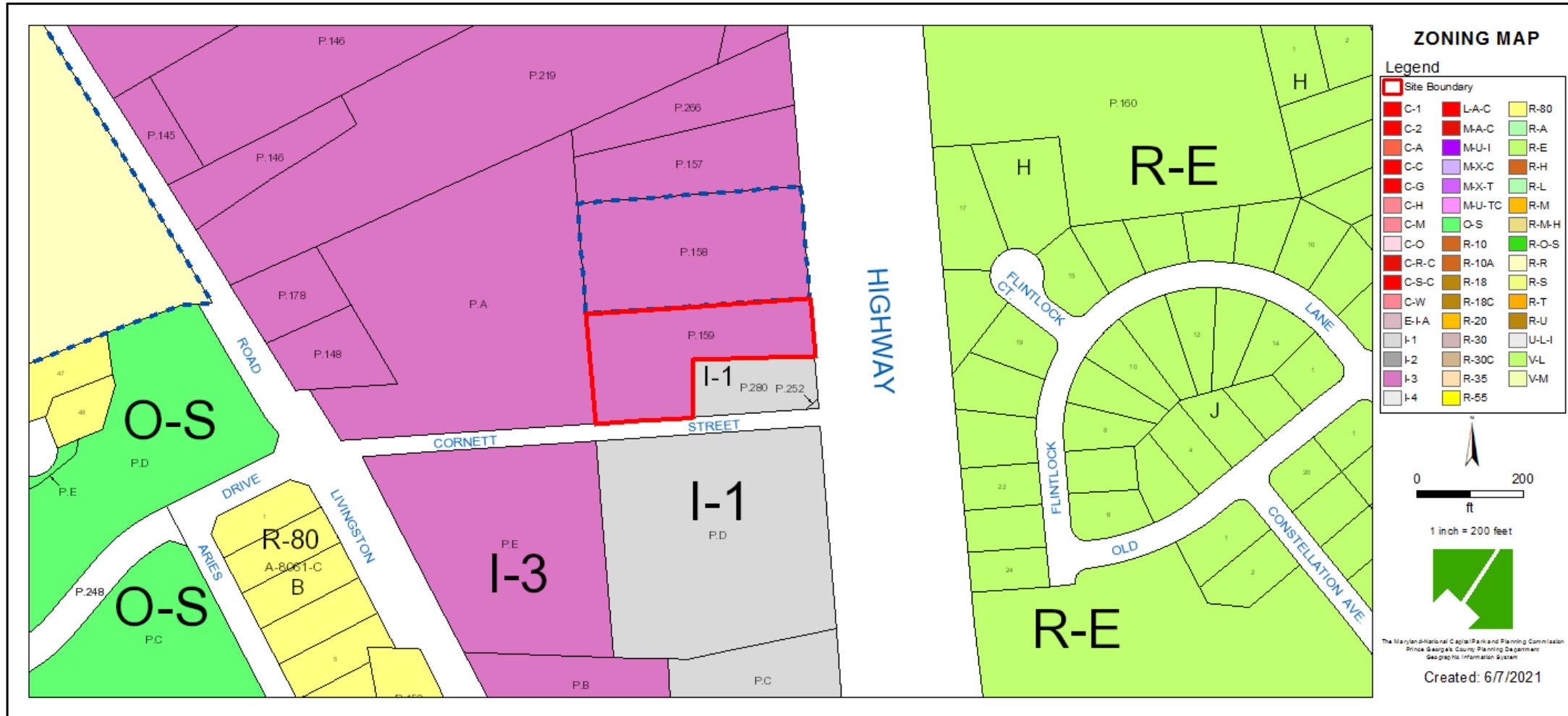


SITE VICINITY MAP



ZONING MAP

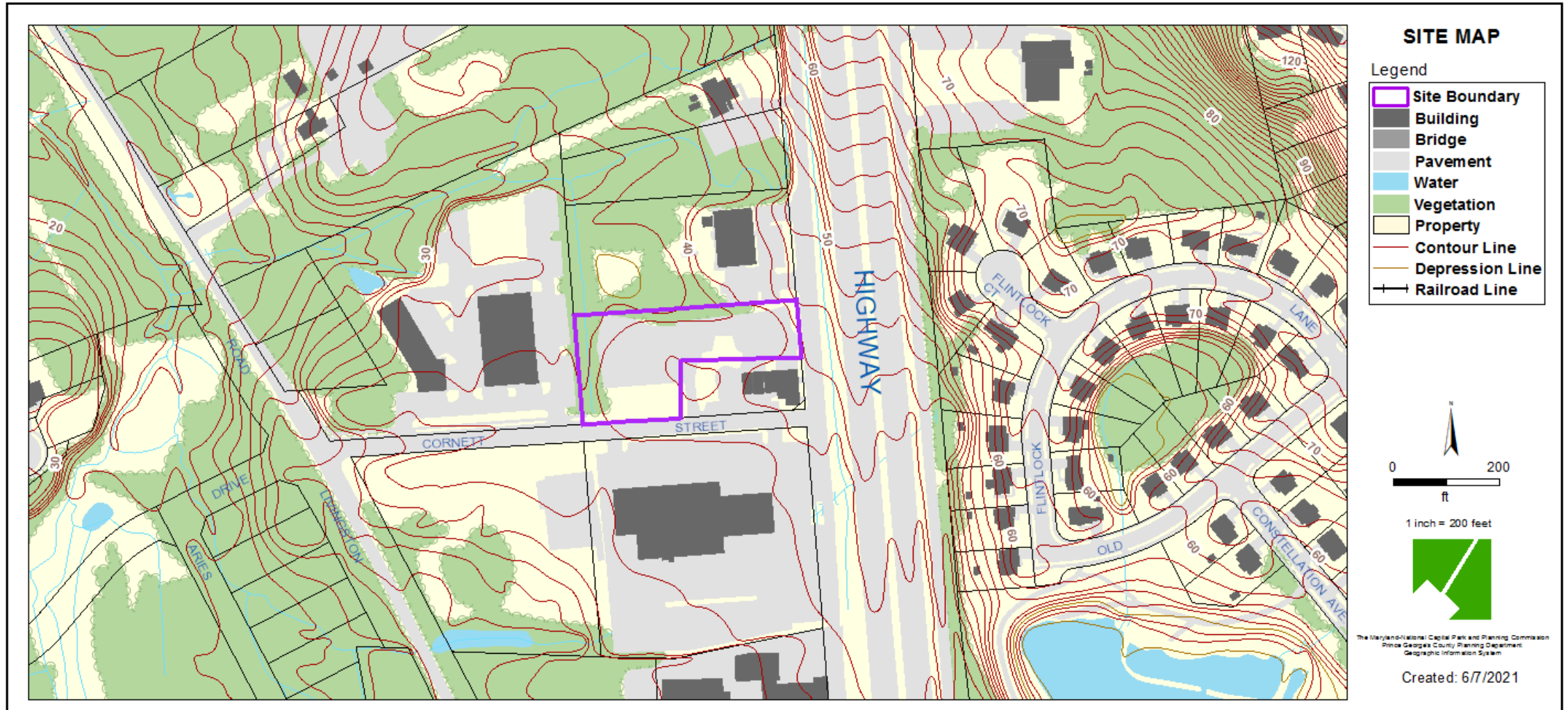
Property Zone: I-3



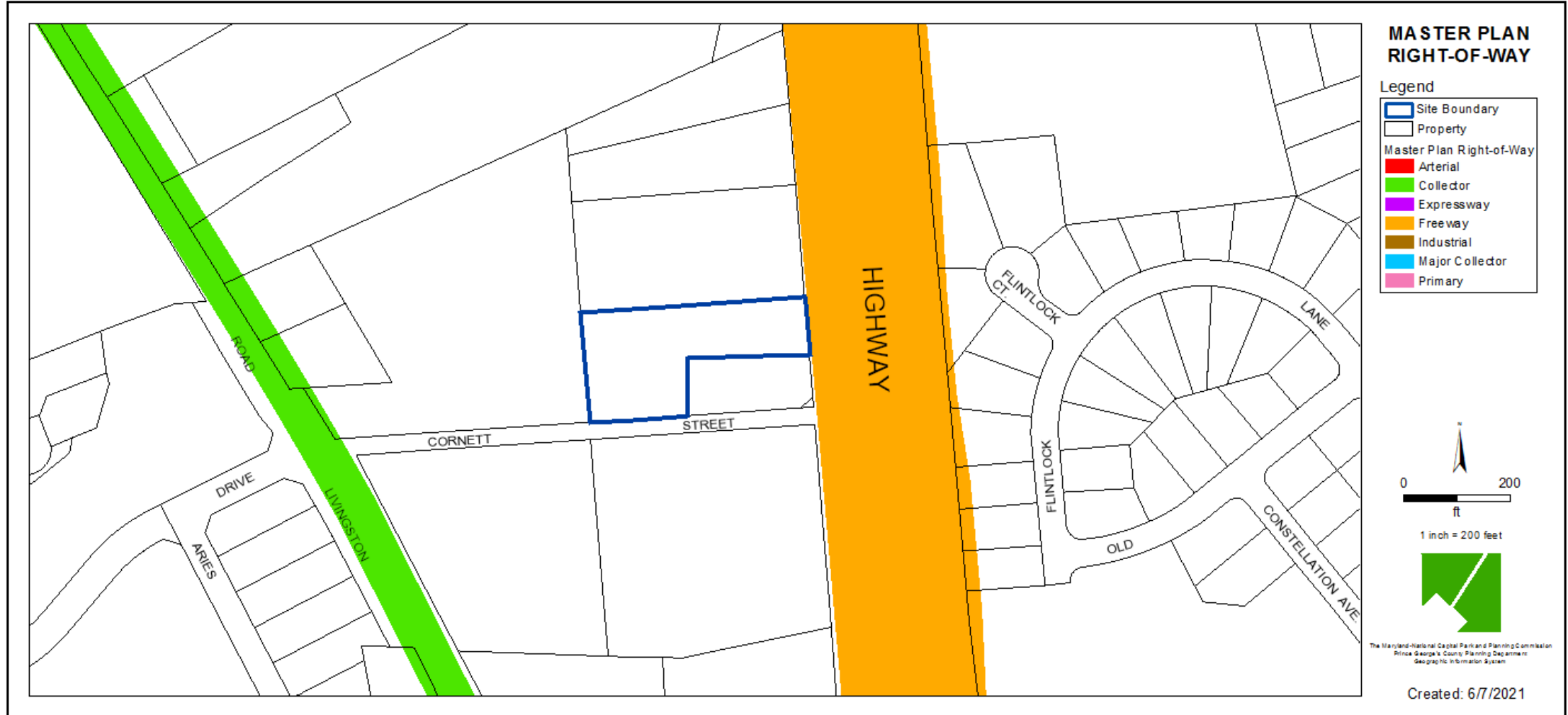
AERIAL MAP



SITE MAP




MASTER PLAN RIGHT-OF-WAY MAP

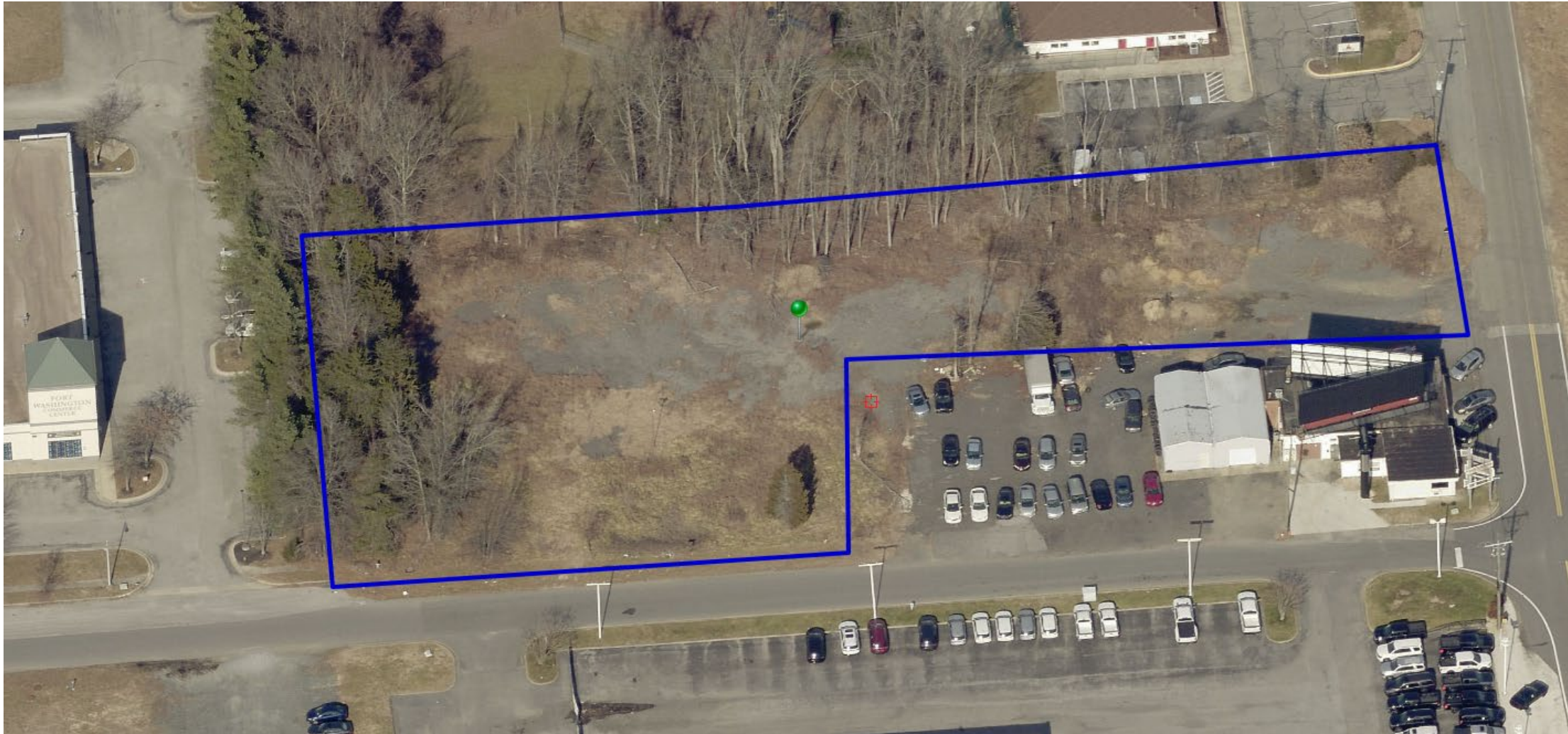


CRITICAL INTERSECTIONS

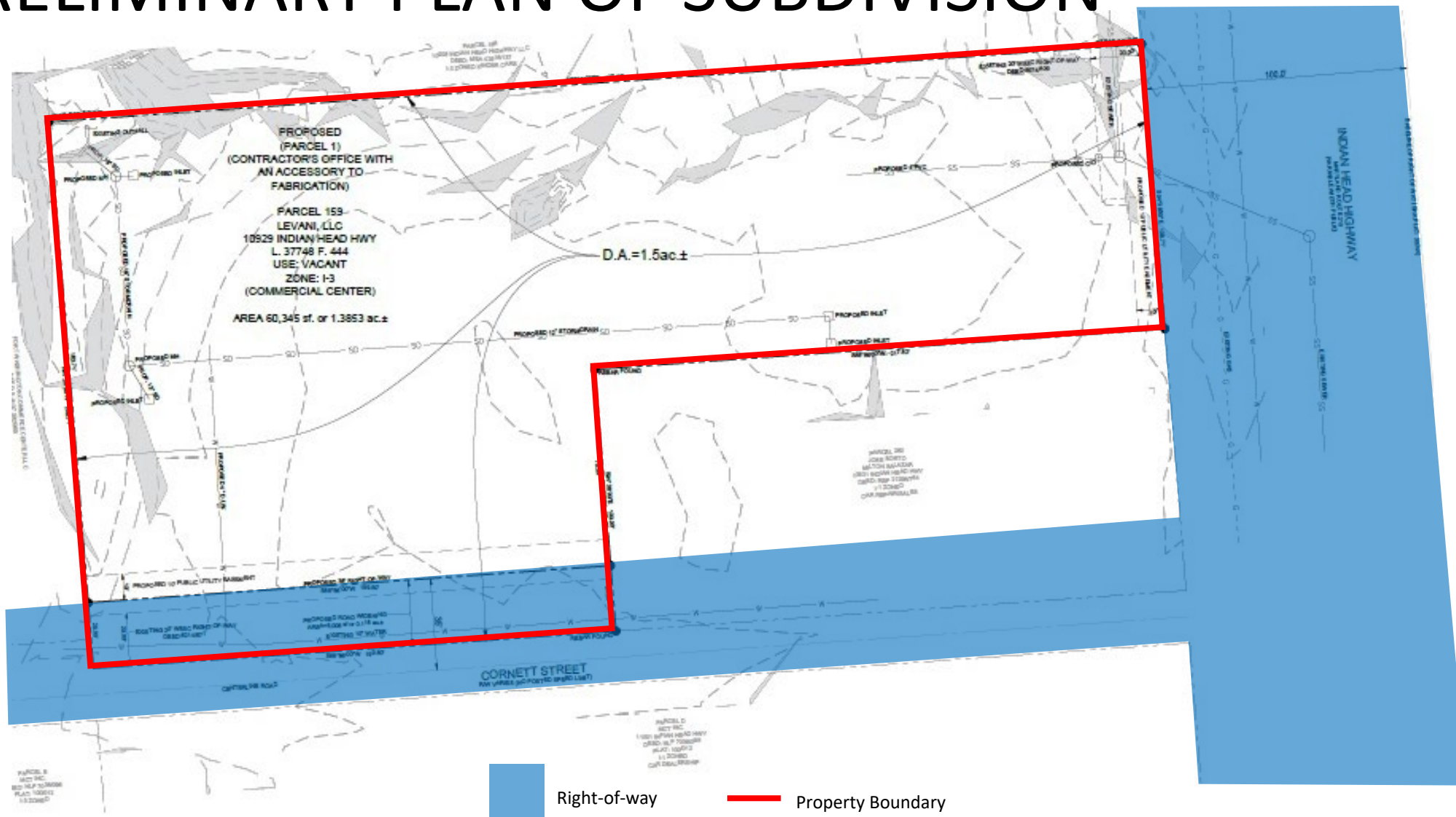


 Critical Intersections

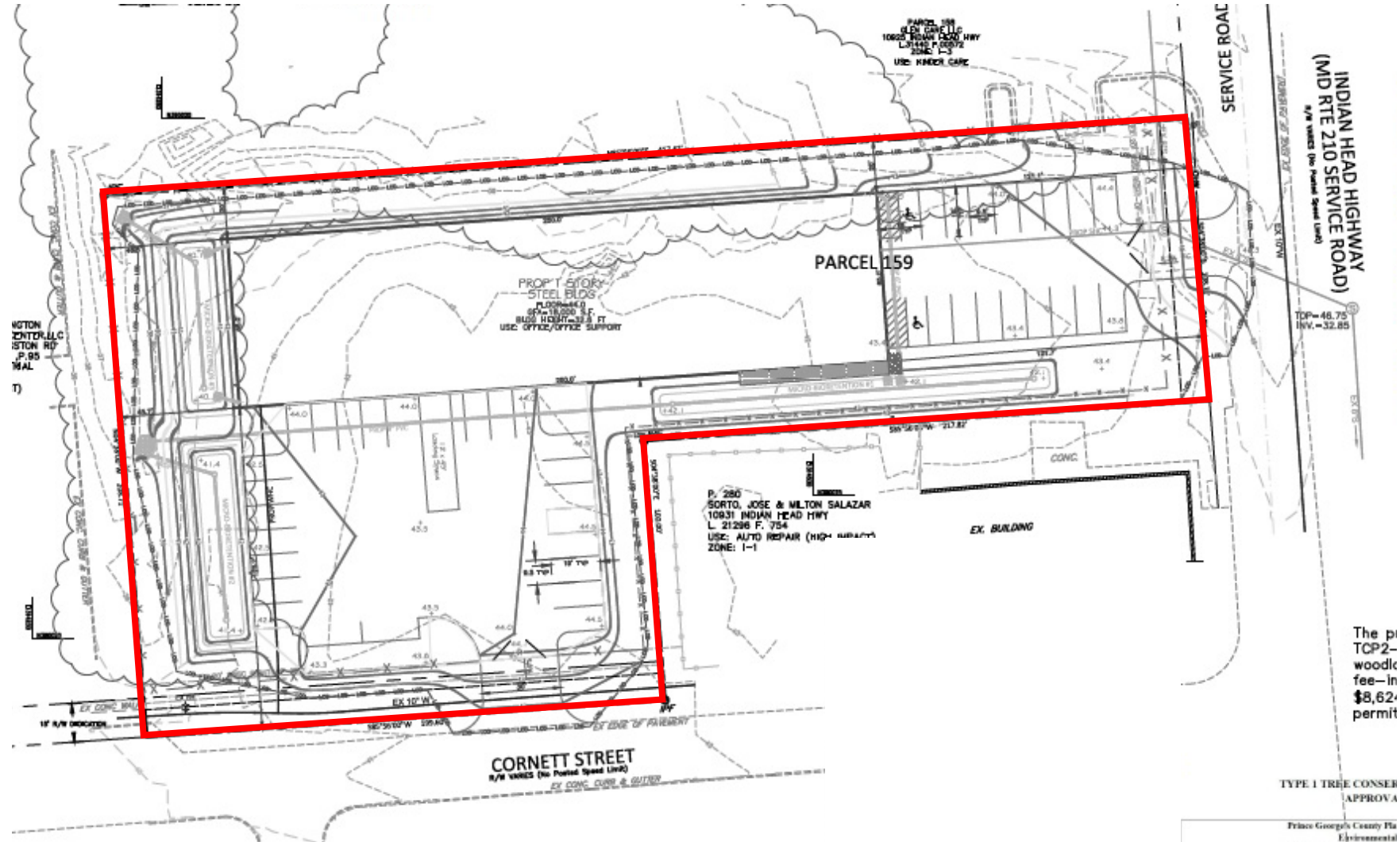
BIRD'S-EYE VIEW WITH APPROXIMATE SITE BOUNDARY OUTLINED



PRELIMINARY PLAN OF SUBDIVISION



TYPE I TREE CONSERVATION PLAN



STAFF RECOMMENDATION

APPROVAL with 6 conditions

- PPS 4-20016
- TCP1-008-2020-01

Major/Minor Issues:

- N/A

Applicant Community Engagement:

- Informational Mailing: June 8, 2021
- Acceptance Mailing: August 12, 2021