

ITEM: 6

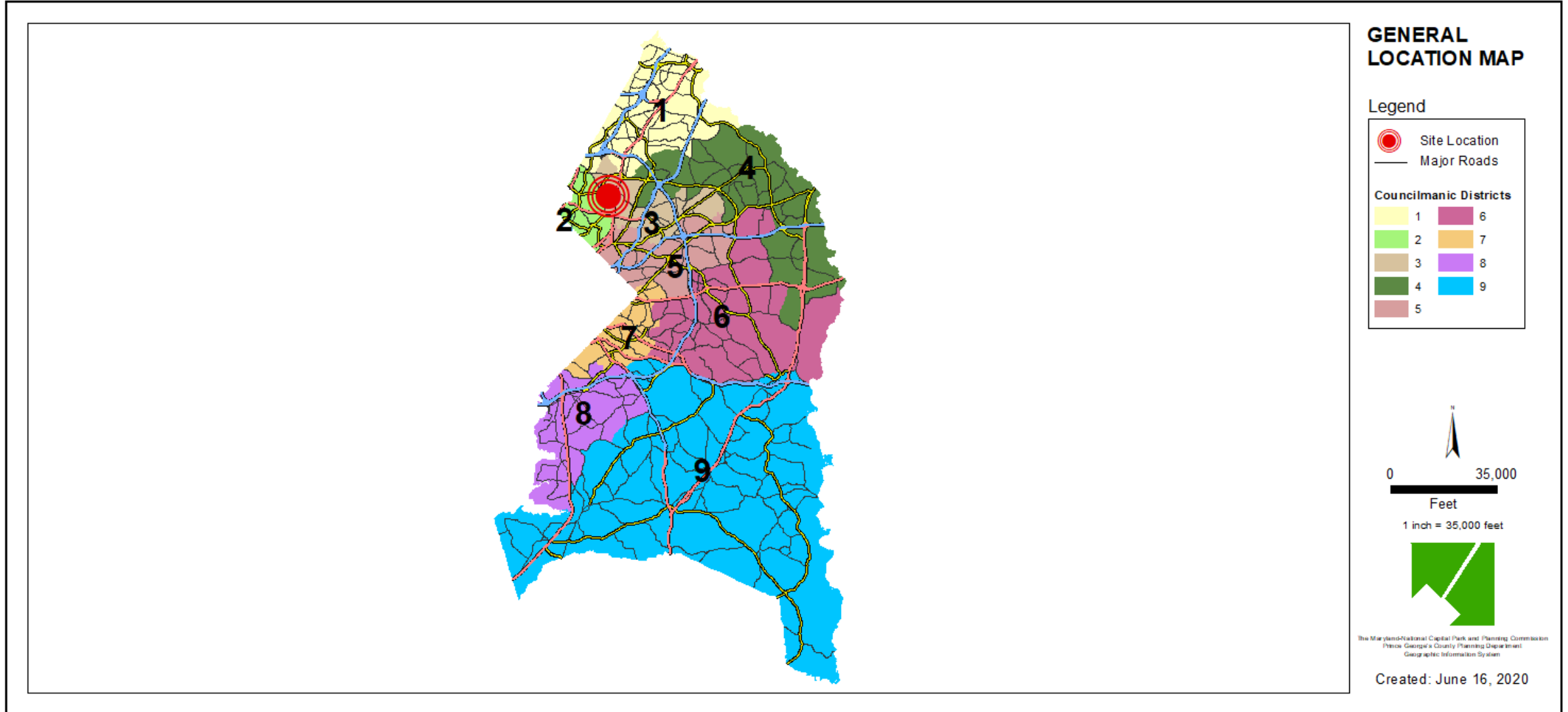
CASE: 4-20017

## ASPEN - MARYLAND

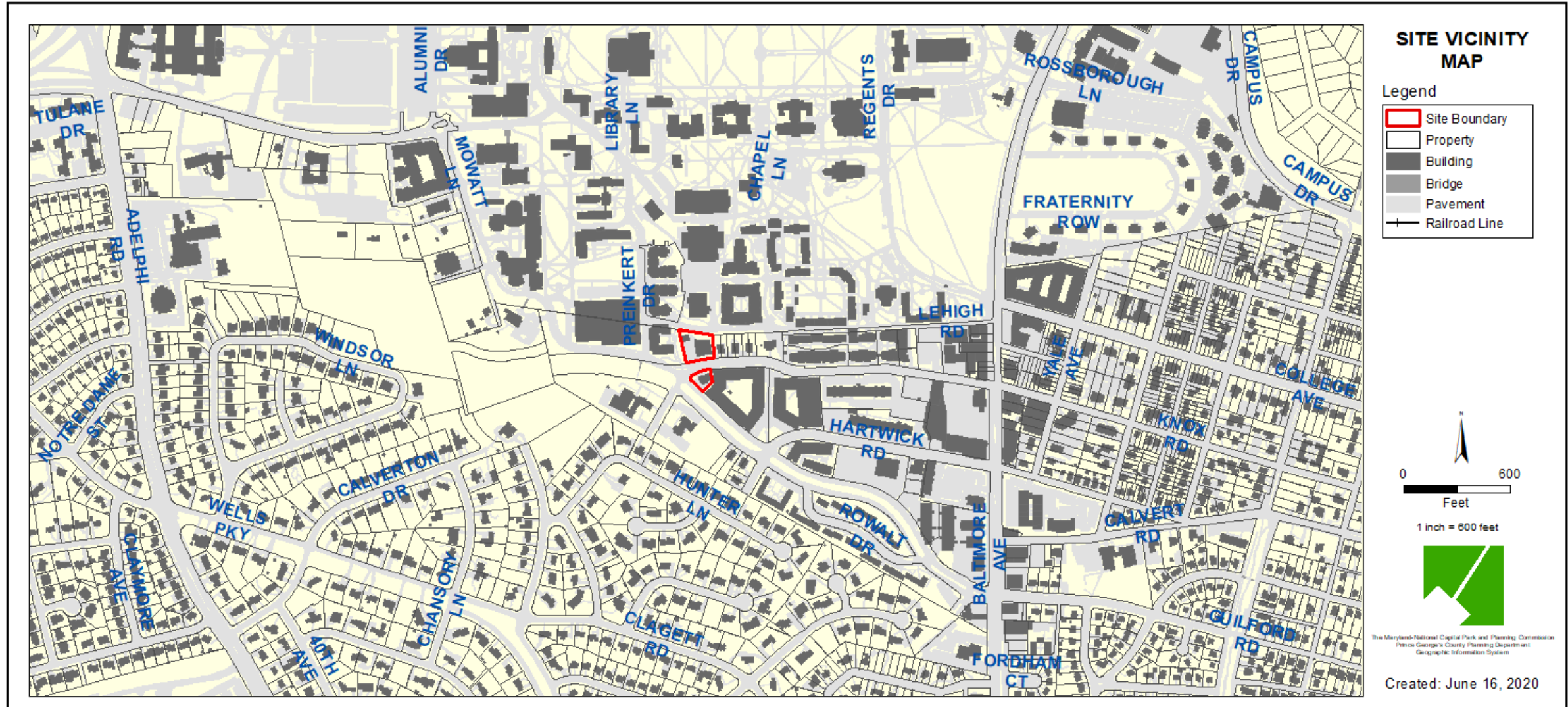
THE PRINCE GEORGE'S COUNTY PLANNING DEPARTMENT



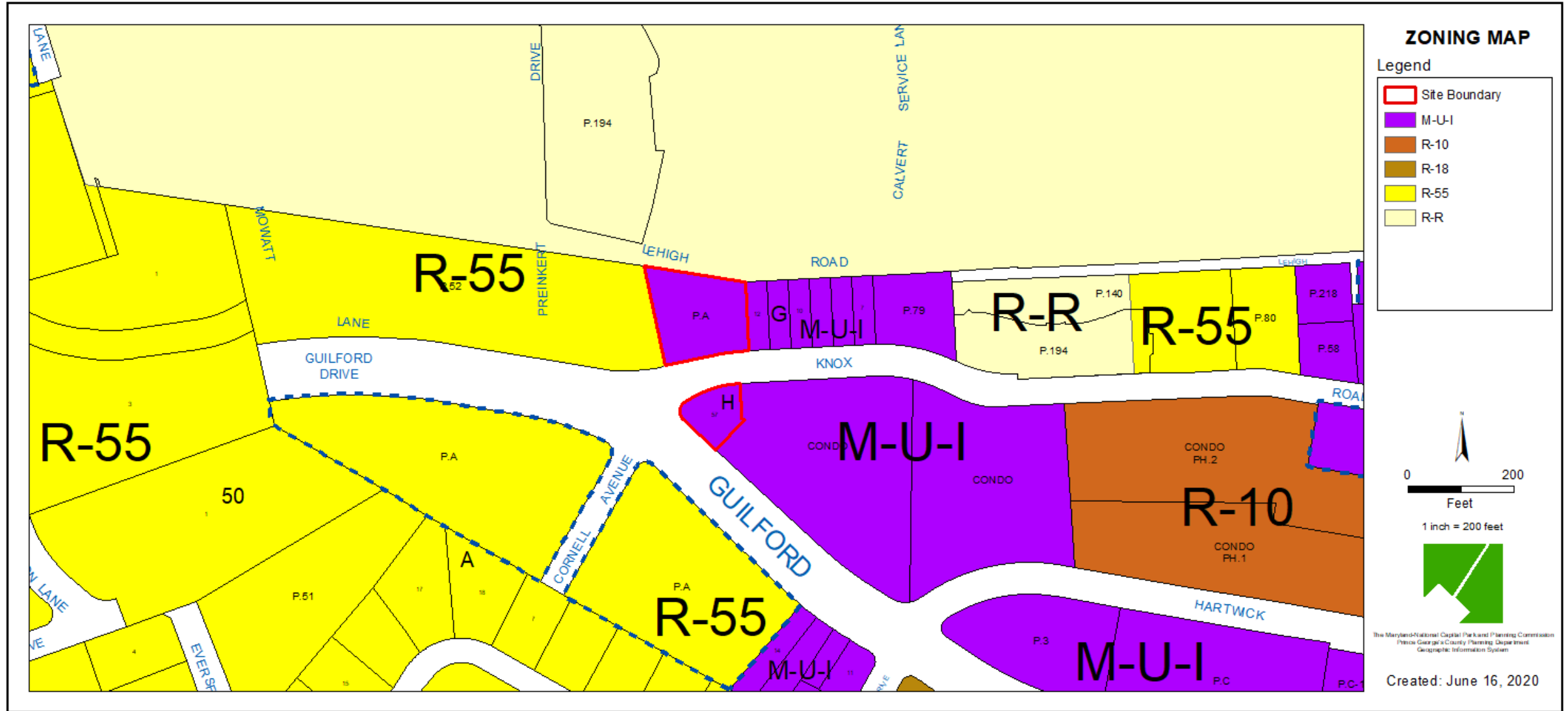
# GENERAL LOCATION MAP



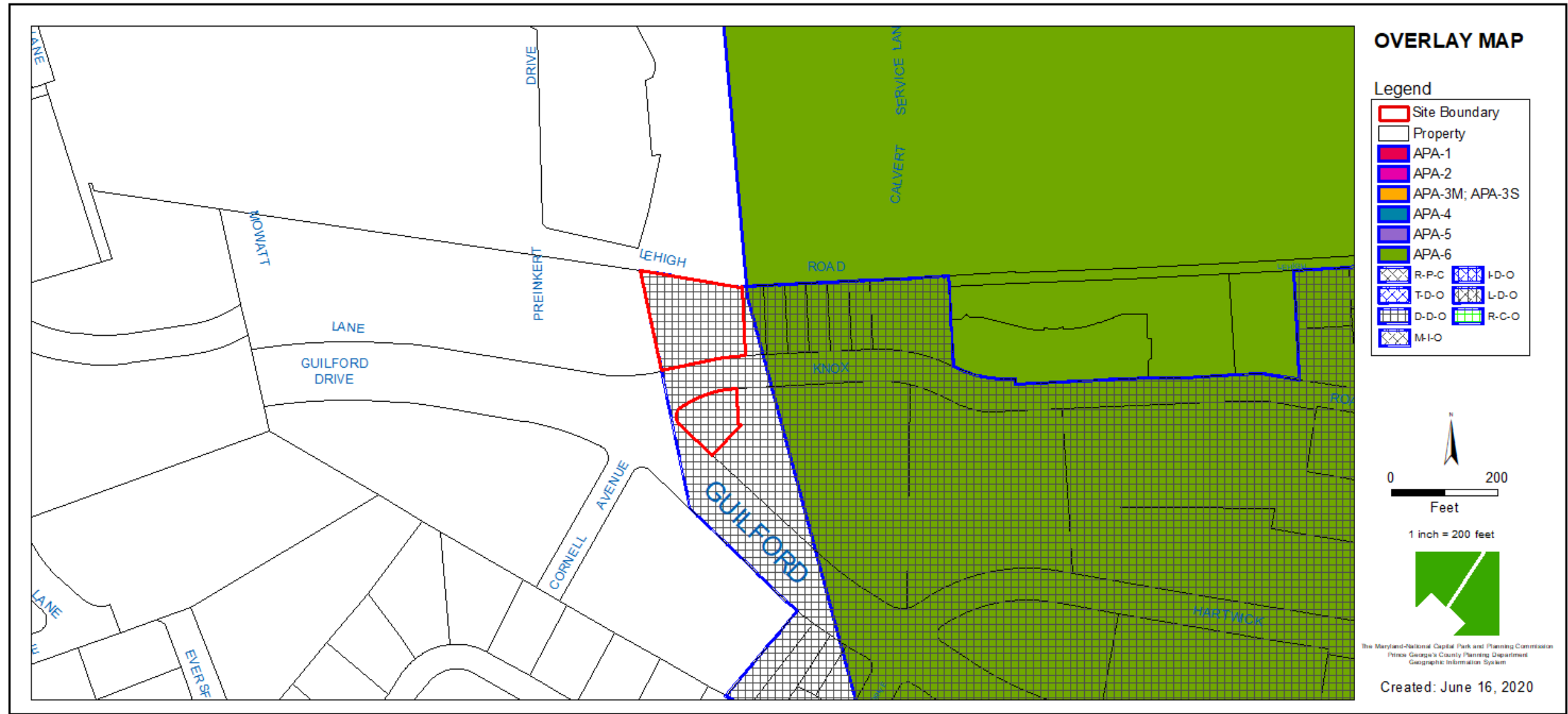
# SITE VICINITY



# ZONING MAP

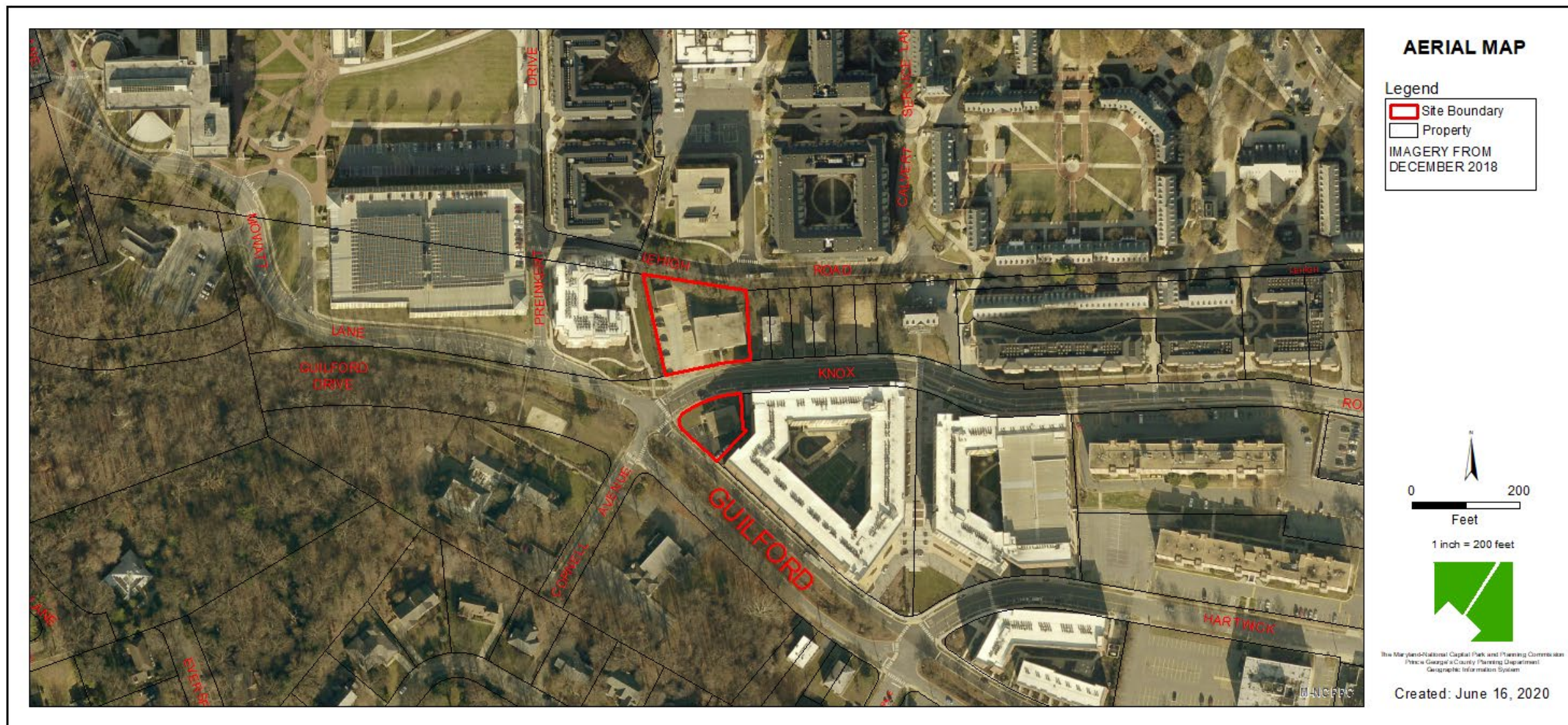


# OVERLAY MAP





# AERIAL MAP

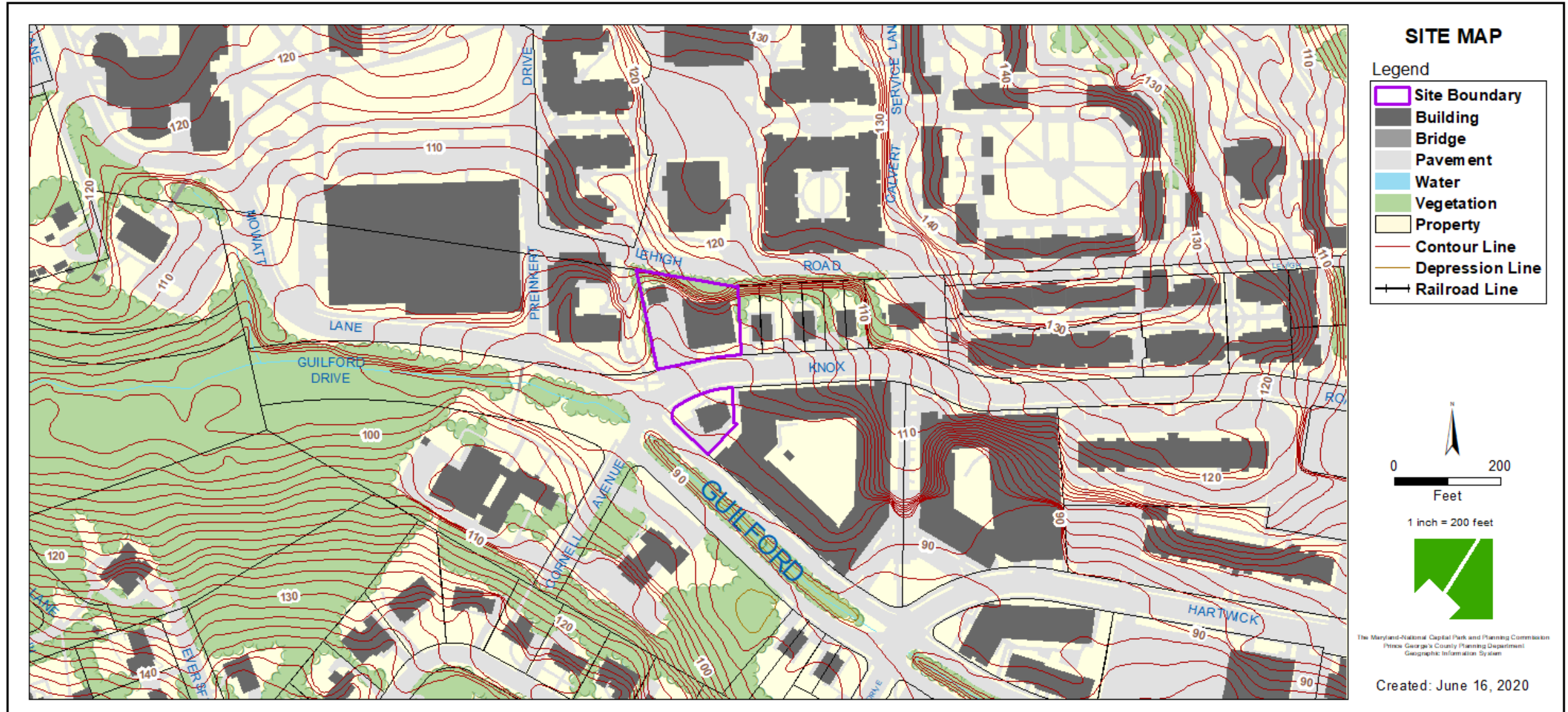




## BIRD'S-EYE VIEW WITH APPROXIMATE SITE BOUNDARY OUTLINED (VIEW FROM NORTH)

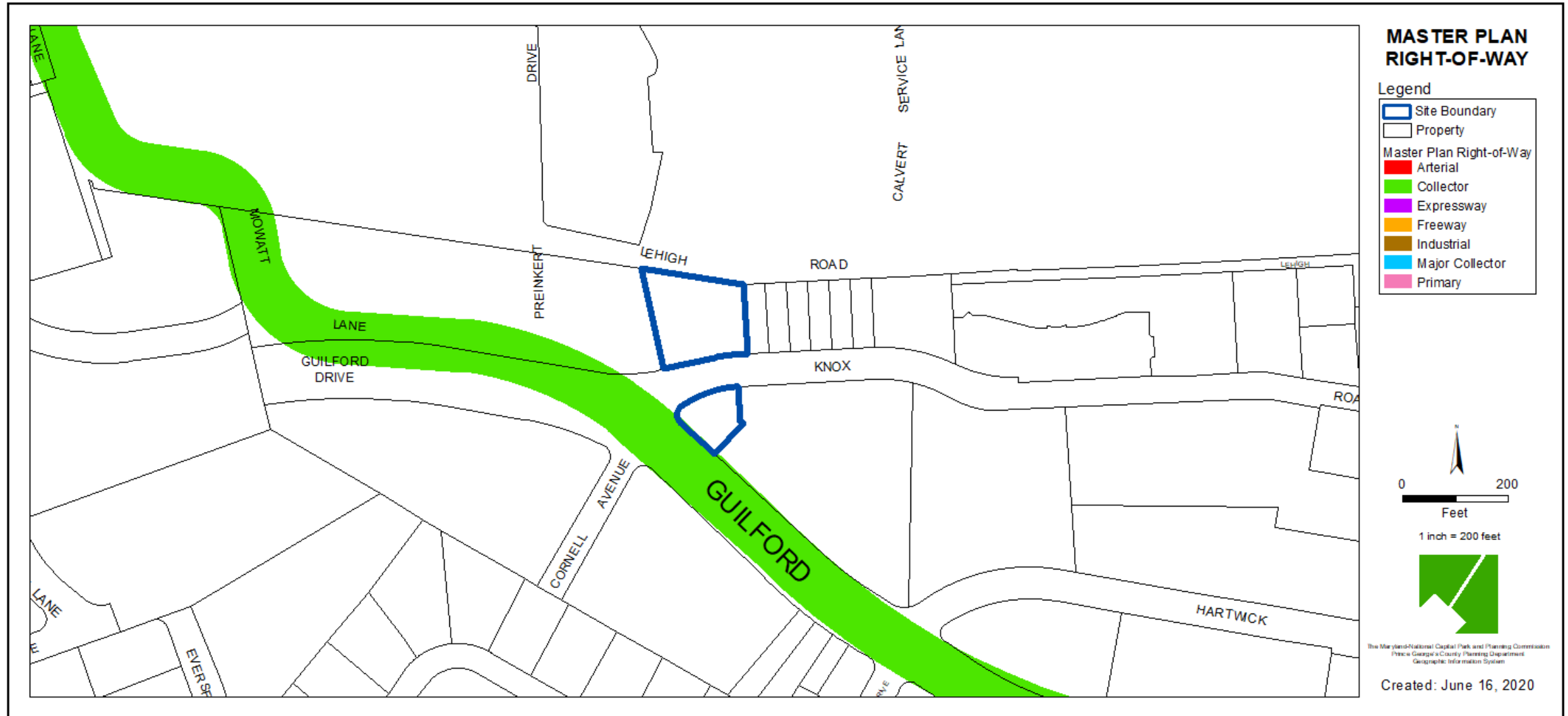


# SITE MAP





# MASTER PLAN RIGHT-OF-WAY MAP



# CRITICAL INTERSECTIONS MAP

## Signalized Intersections on US 1 Corridor:

1. US 1 & Campus Drive
2. US 1 & The Hotel at University of Maryland
3. US 1 & Yale Ave (Rossborough Dr)
4. US 1 & Fraternity Row
5. US 1 & College Ave / Regents Dr
6. US 1 & Knox Rd
7. US 1 & Hartwick Road
8. US 1 & Calvert Rd
9. US 1 & Guilford Dr

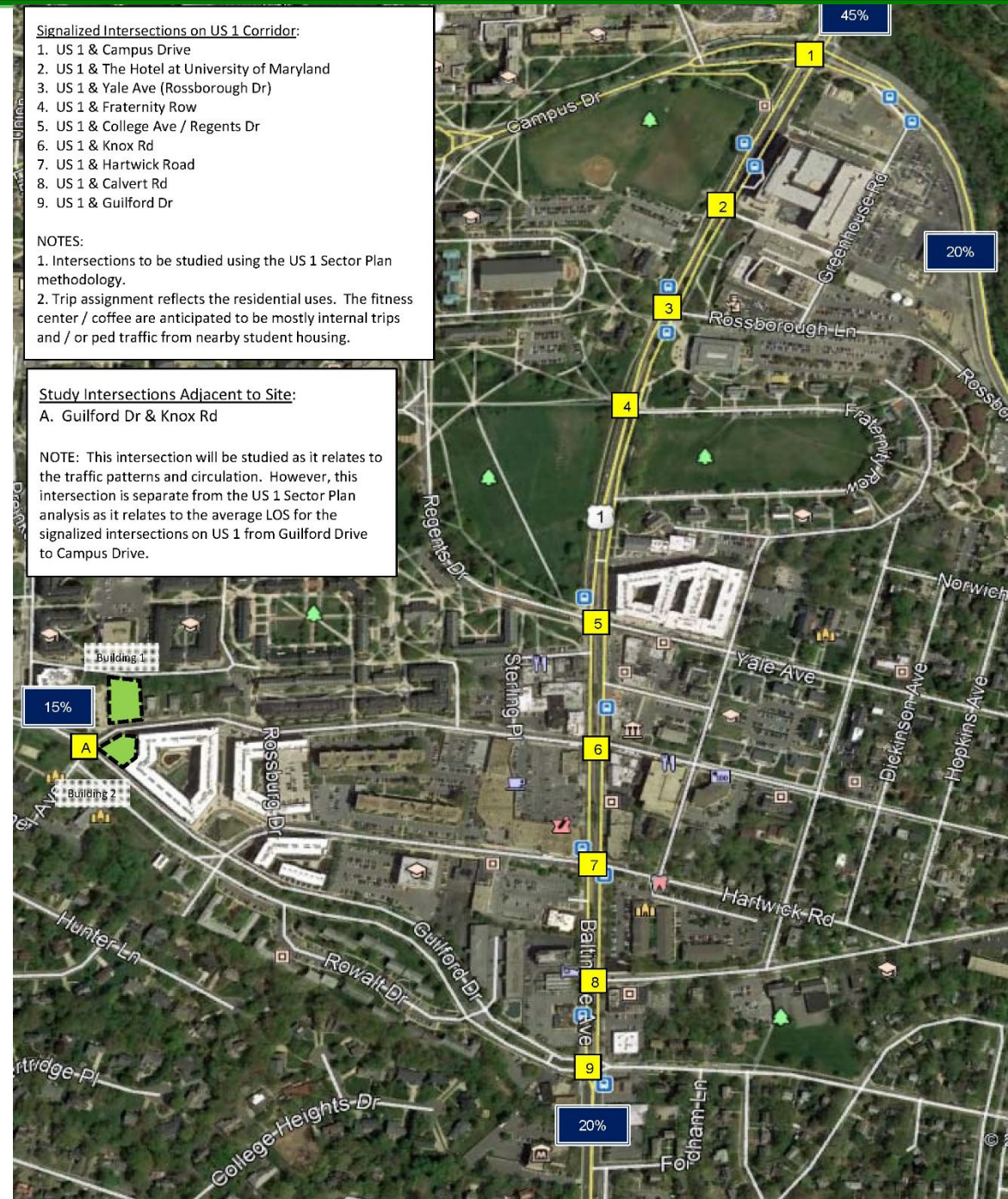
## NOTES:

1. Intersections to be studied using the US 1 Sector Plan methodology.
2. Trip assignment reflects the residential uses. The fitness center / coffee are anticipated to be mostly internal trips and / or ped traffic from nearby student housing.

## Study Intersections Adjacent to Site:

- A. Guilford Dr & Knox Rd

NOTE: This intersection will be studied as it relates to the traffic patterns and circulation. However, this intersection is separate from the US 1 Sector Plan analysis as it relates to the average LOS for the signalized intersections on US 1 from Guilford Drive to Campus Drive.



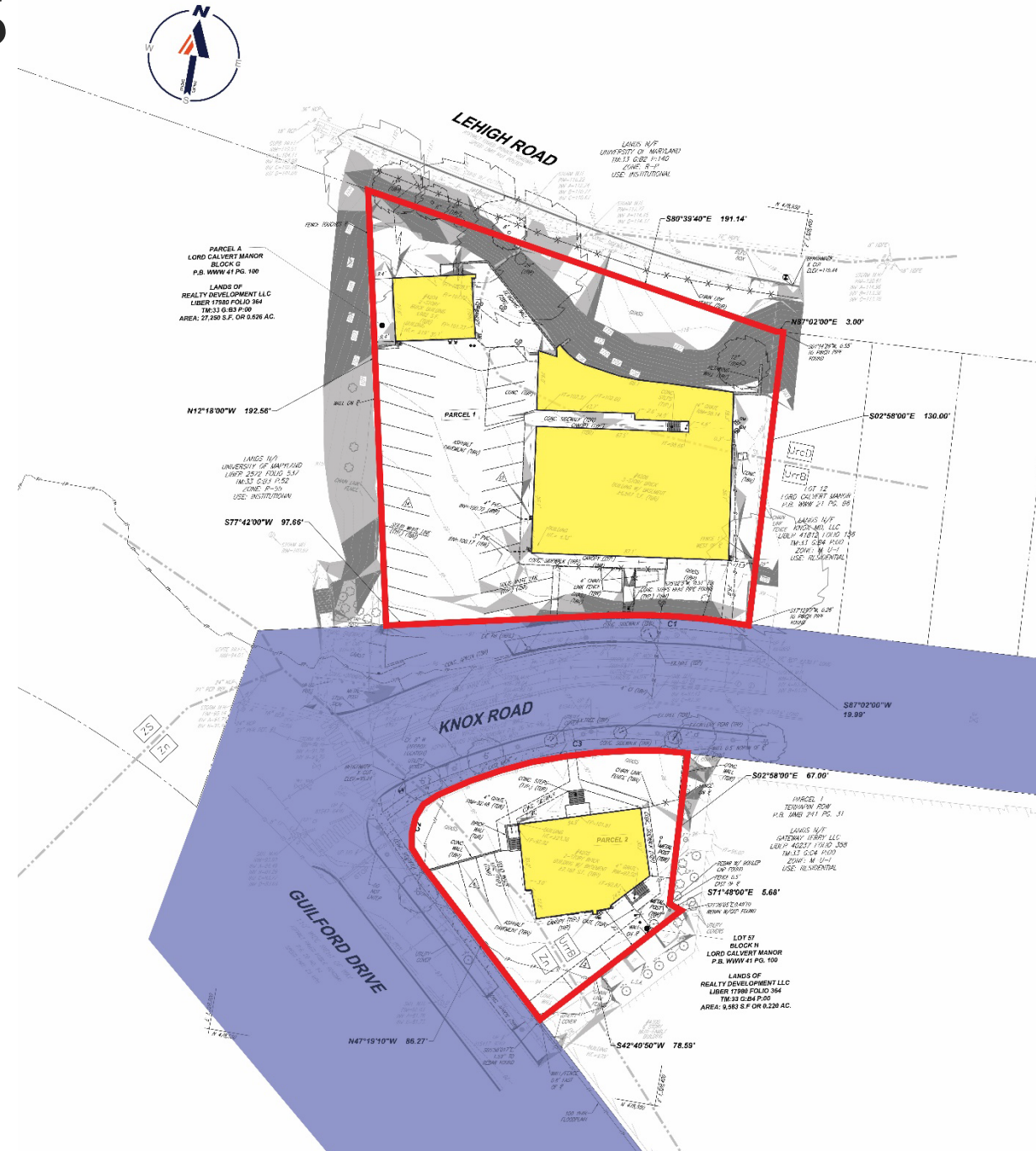


# BICYCLE PEDESTRIAN IMPACT LOCATIONS

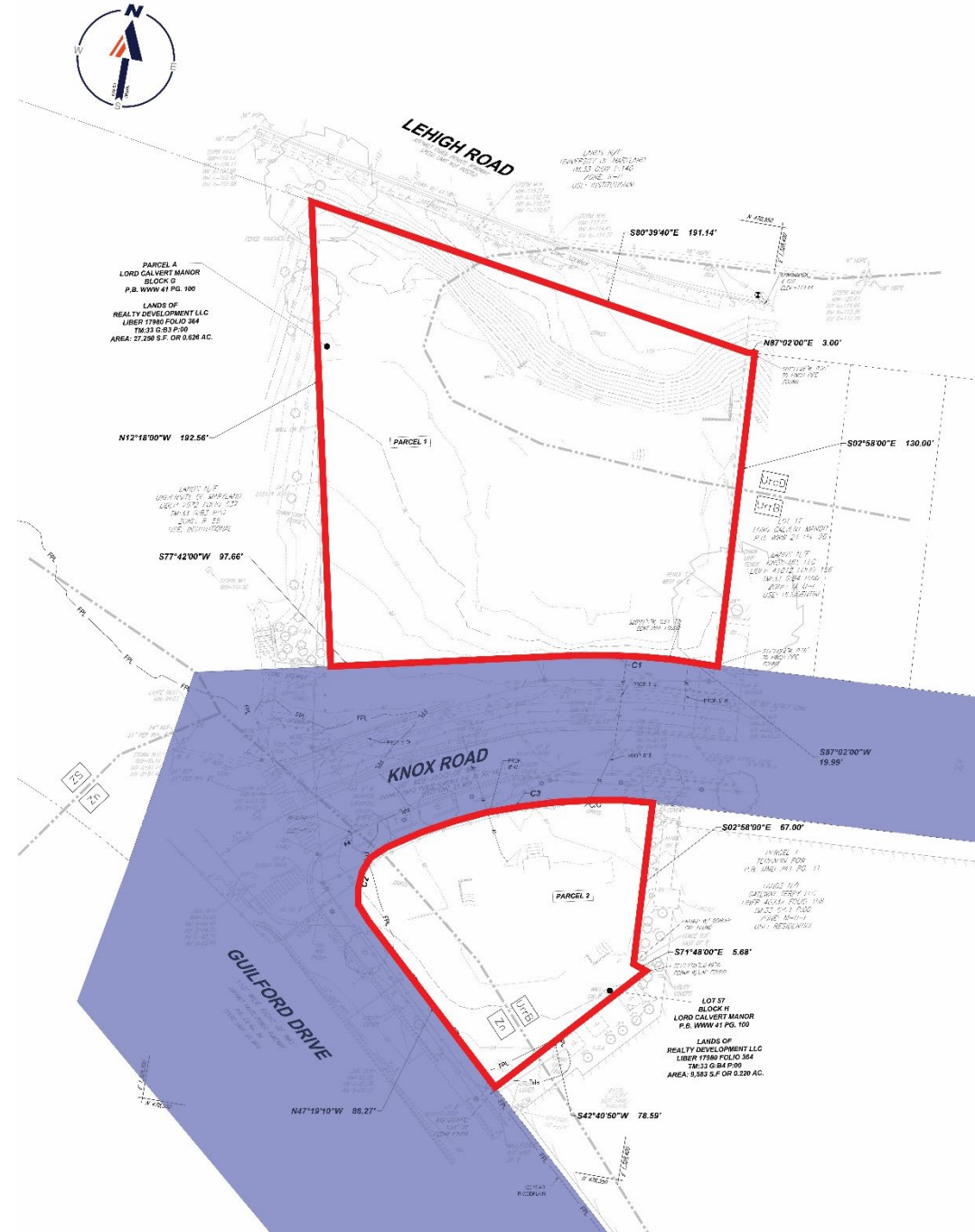




# EXISTING CONDITIONS



# PROPOSED PRELIMINARY PLAN OF SUBDIVISION



# BUILDING AND SIDEWALK EXHIBIT

