

ITEM: 7

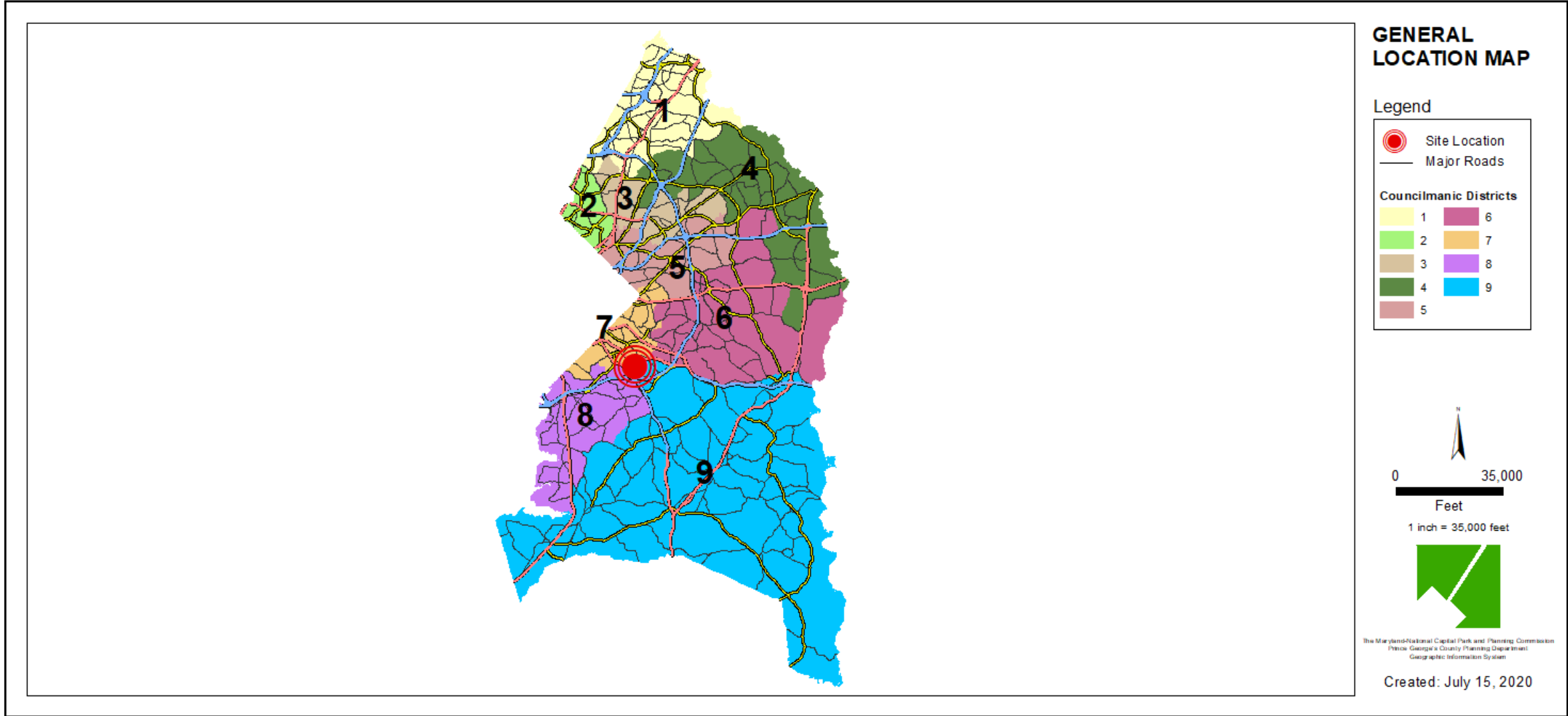
CASE: 4-20018

TWO TOWN CENTER

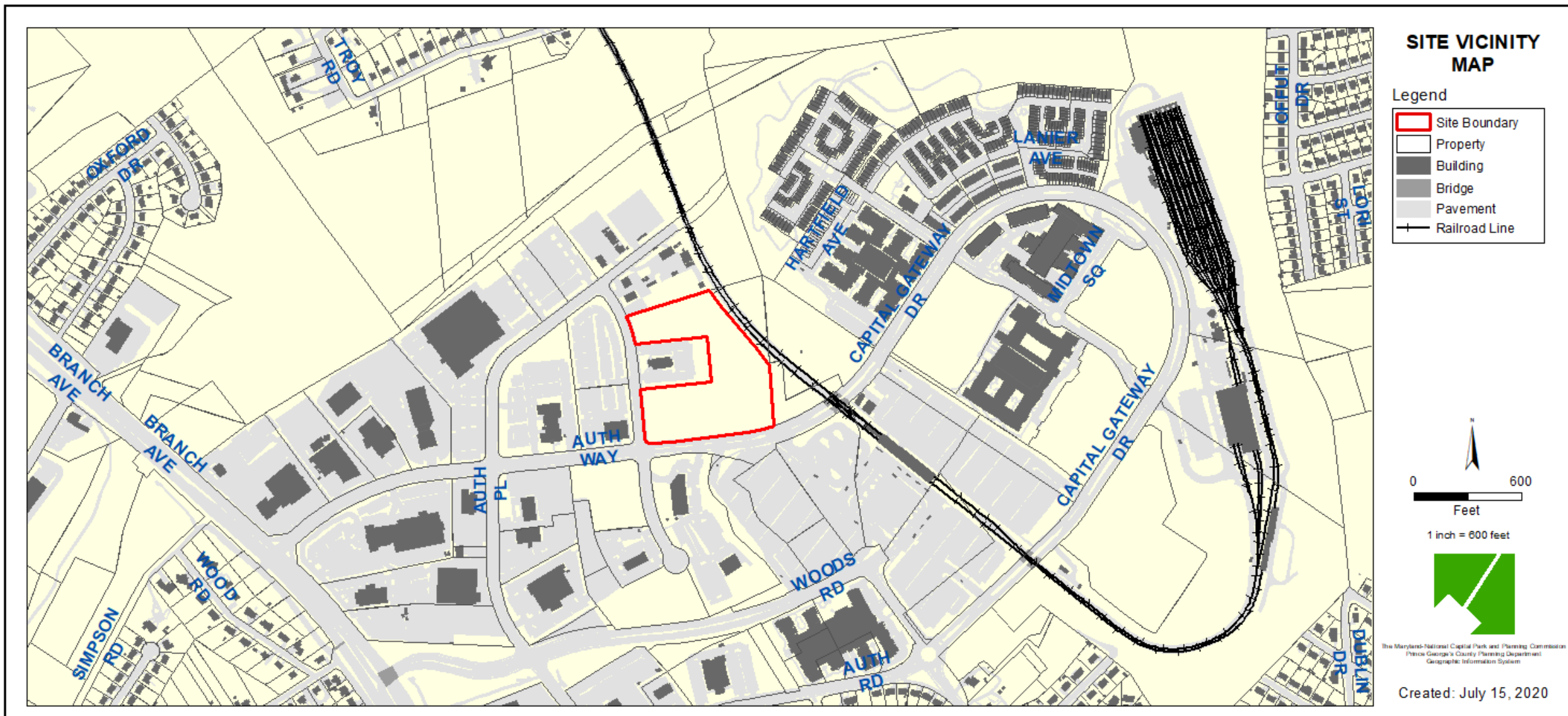
THE PRINCE GEORGE'S COUNTY PLANNING DEPARTMENT



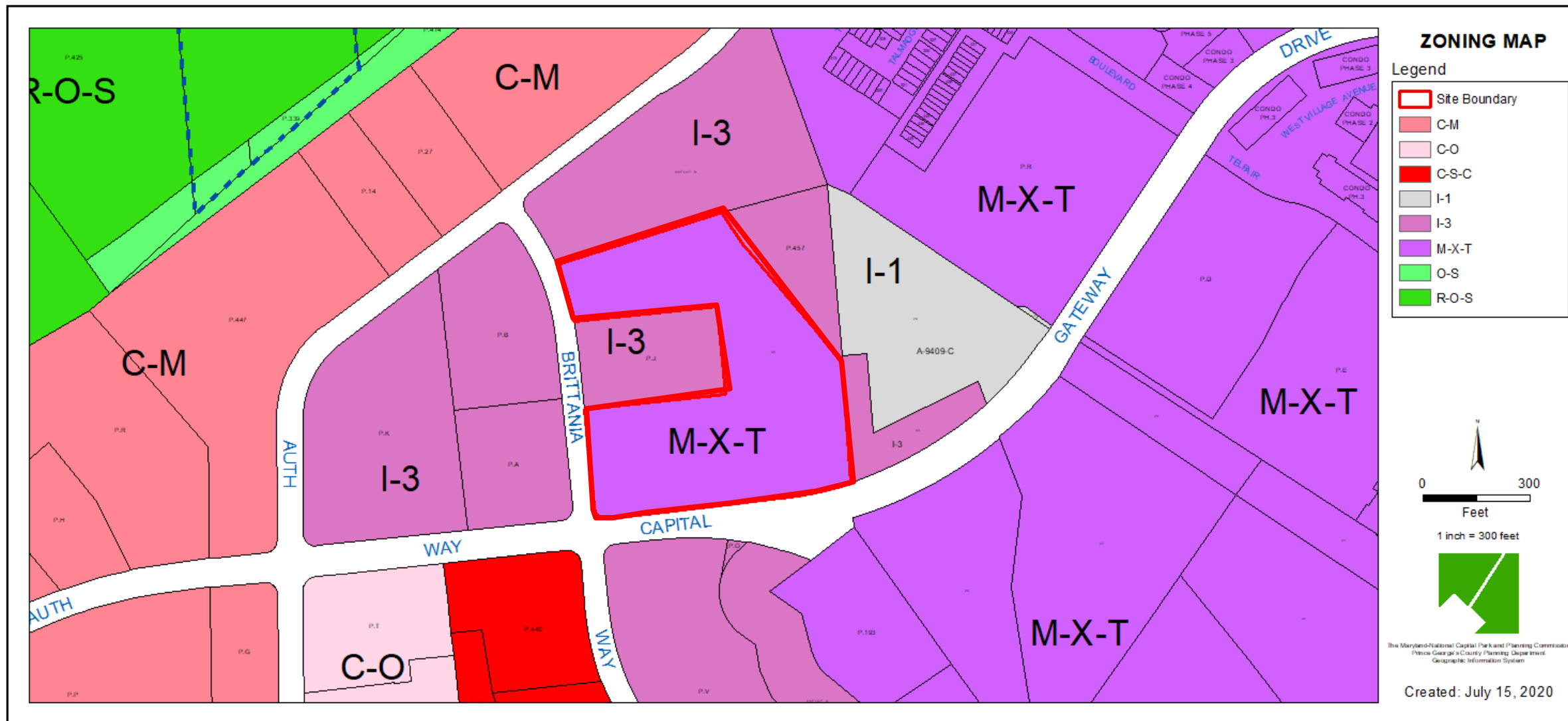
GENERAL LOCATION MAP



SITE VICINITY



ZONING MAP



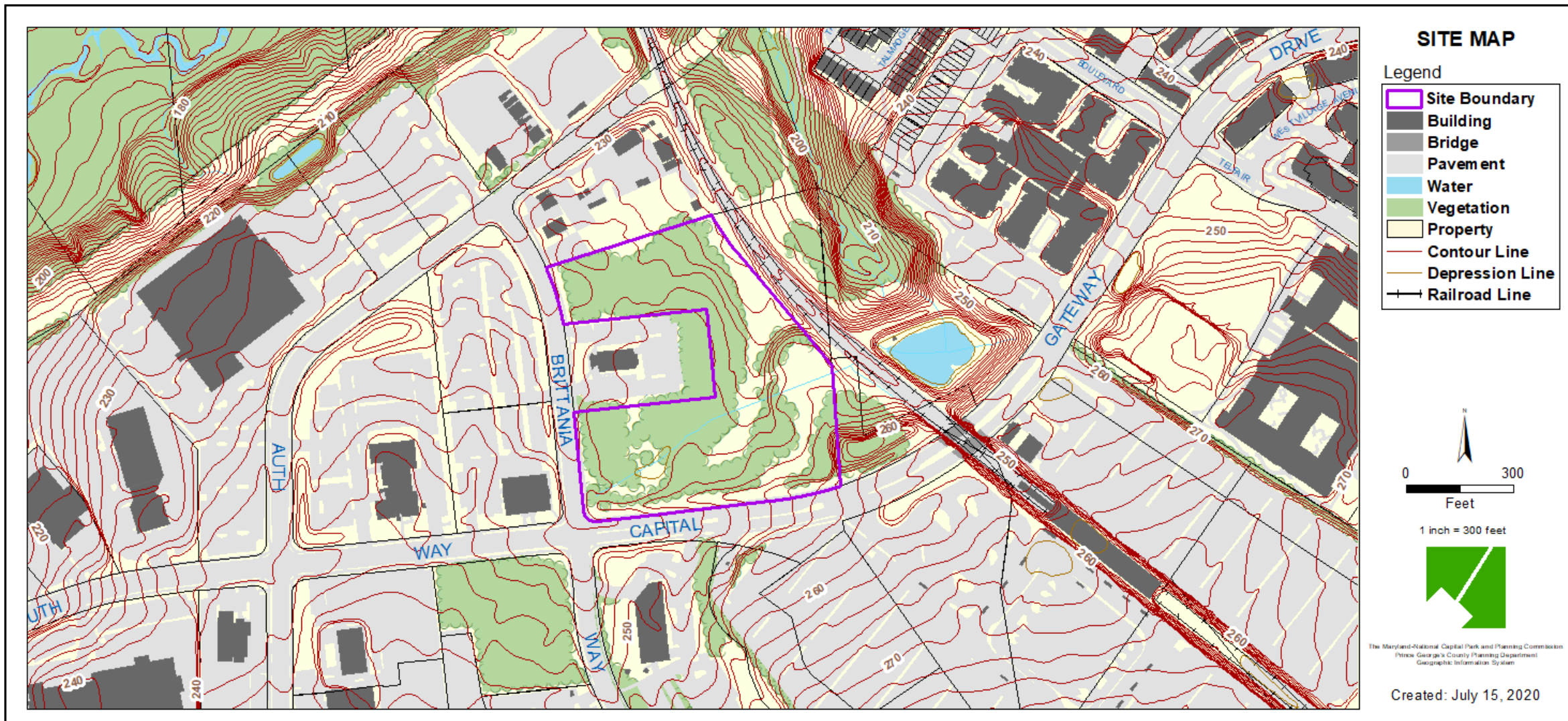
OVERLAY MAP



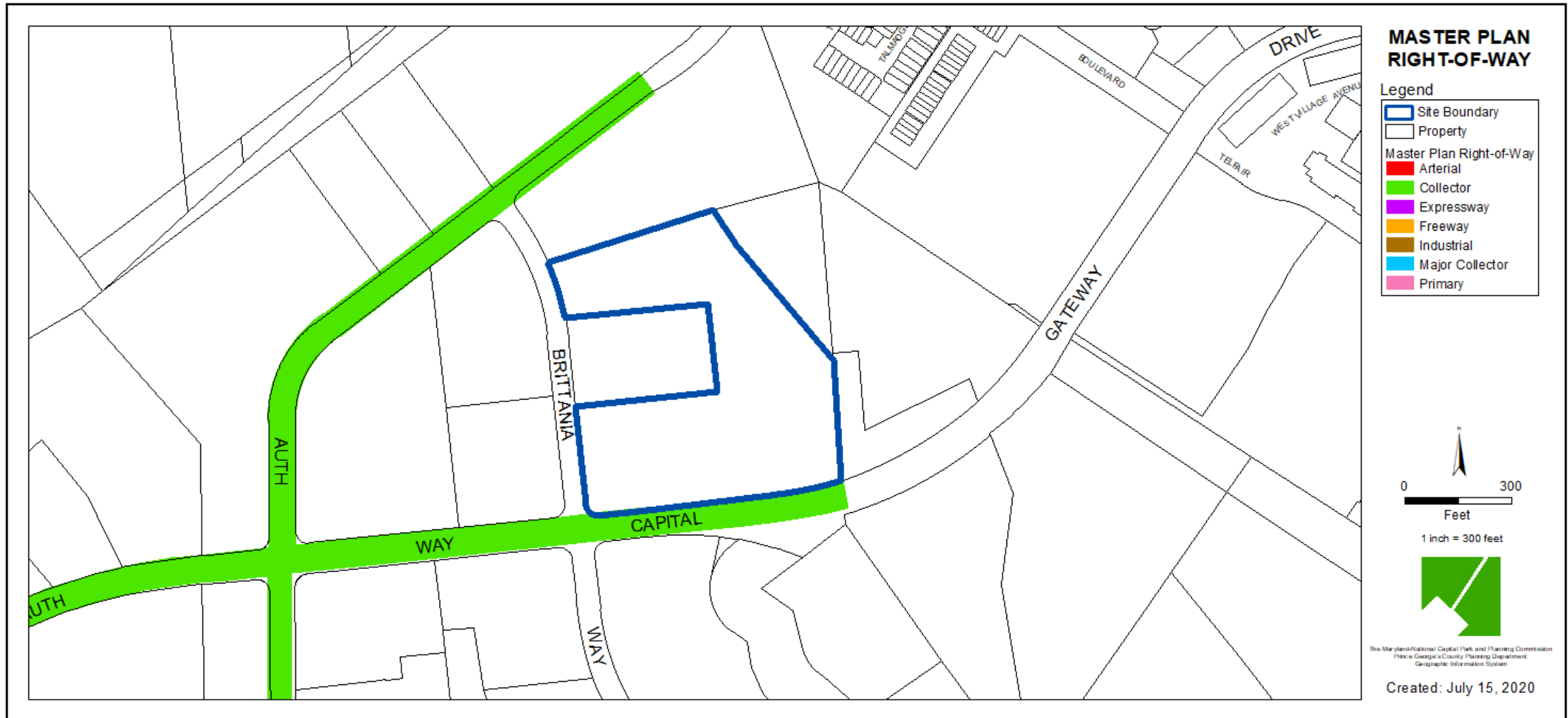
AERIAL MAP



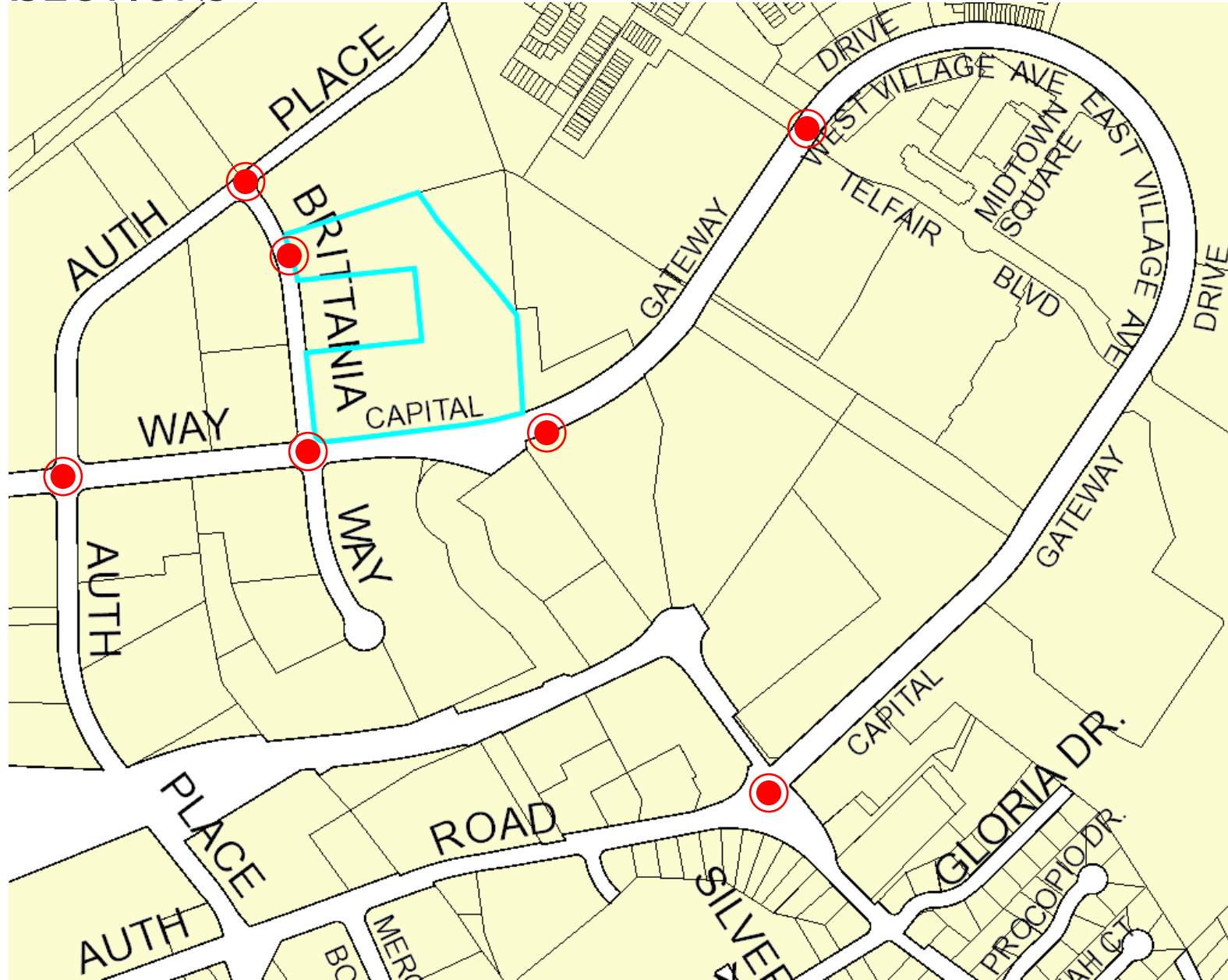
SITE MAP



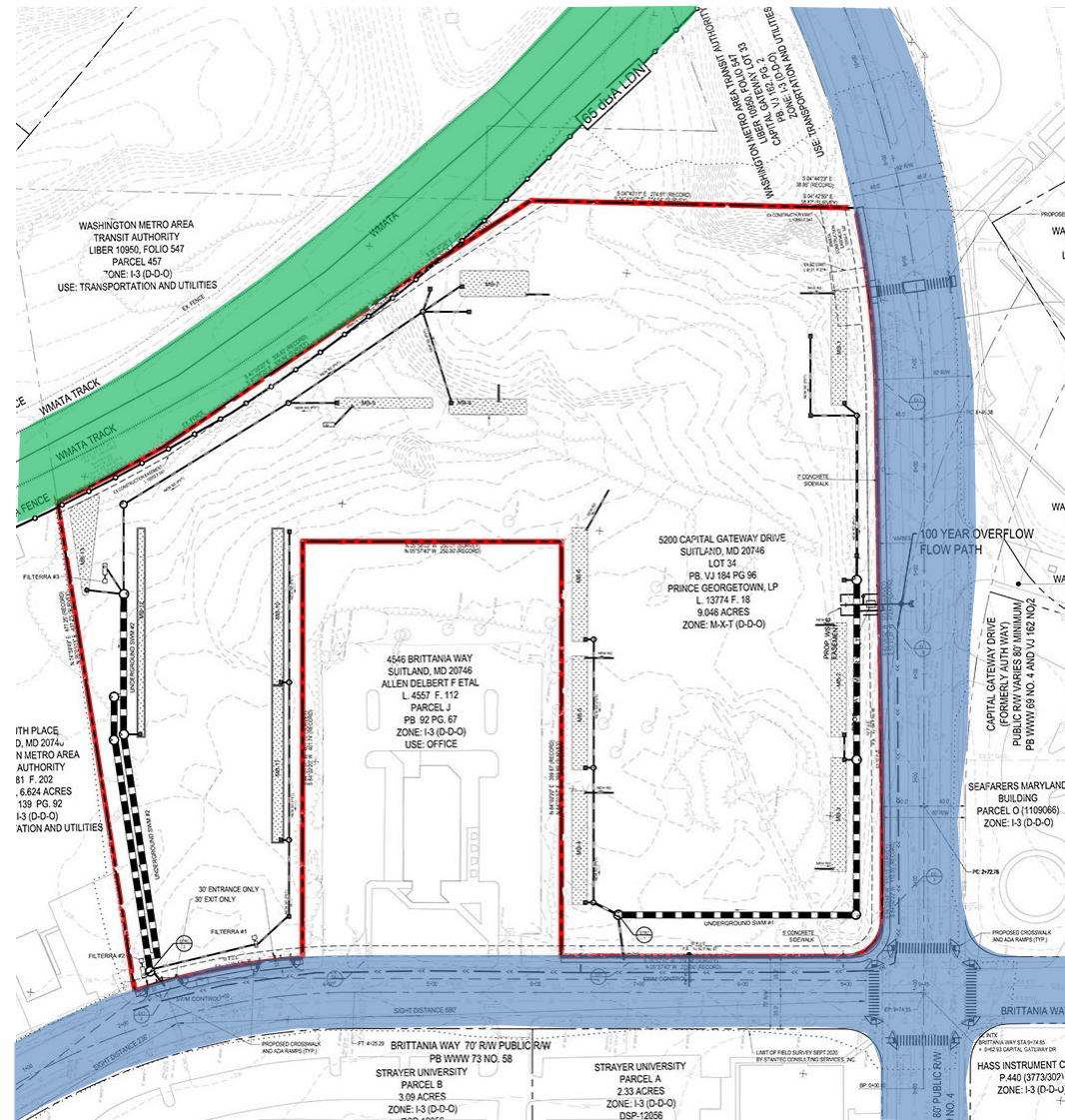
MASTER PLAN RIGHT-OF-WAY MAP



CRITICAL INTERSECTIONS



PRELIMINARY PLAN OF SUBDIVISION



BICYCLE PEDESTRIAN IMPACT STATEMENT

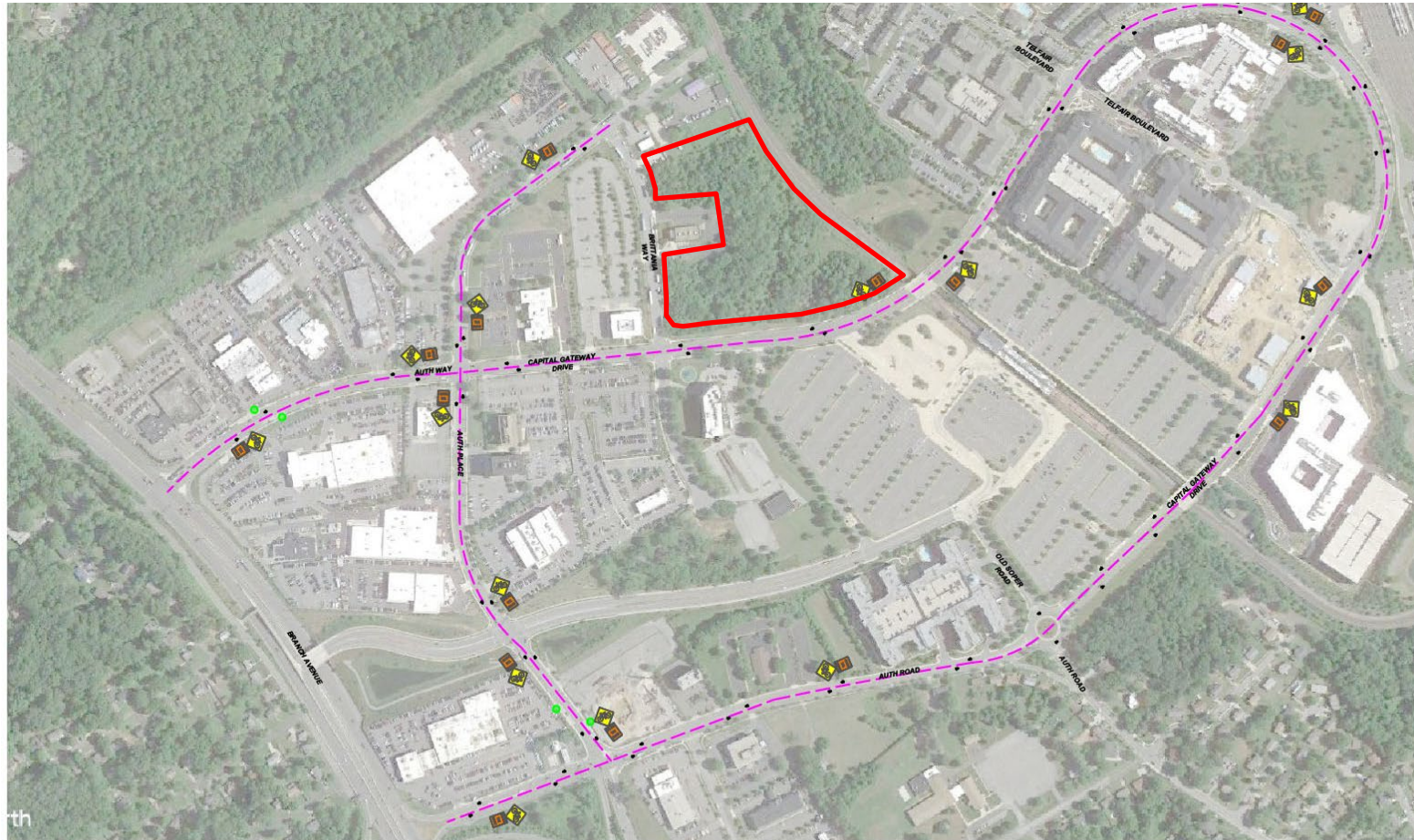


Figure 1-3
Proposed Off Site Improvements

Two Town Center
Prince George's County, Maryland

- Concrete Bus Shelter Pad (according to DPW&T standard 300.24)
- - - Planned Bike Route, Shared Use Road
- Sharrow Pavement Markings
- W11-1 Sign
- W16-1P Sign



TYPE I TREE CONSERVATION PLAN

