

ELP DC II

Preliminary Plan of Subdivision

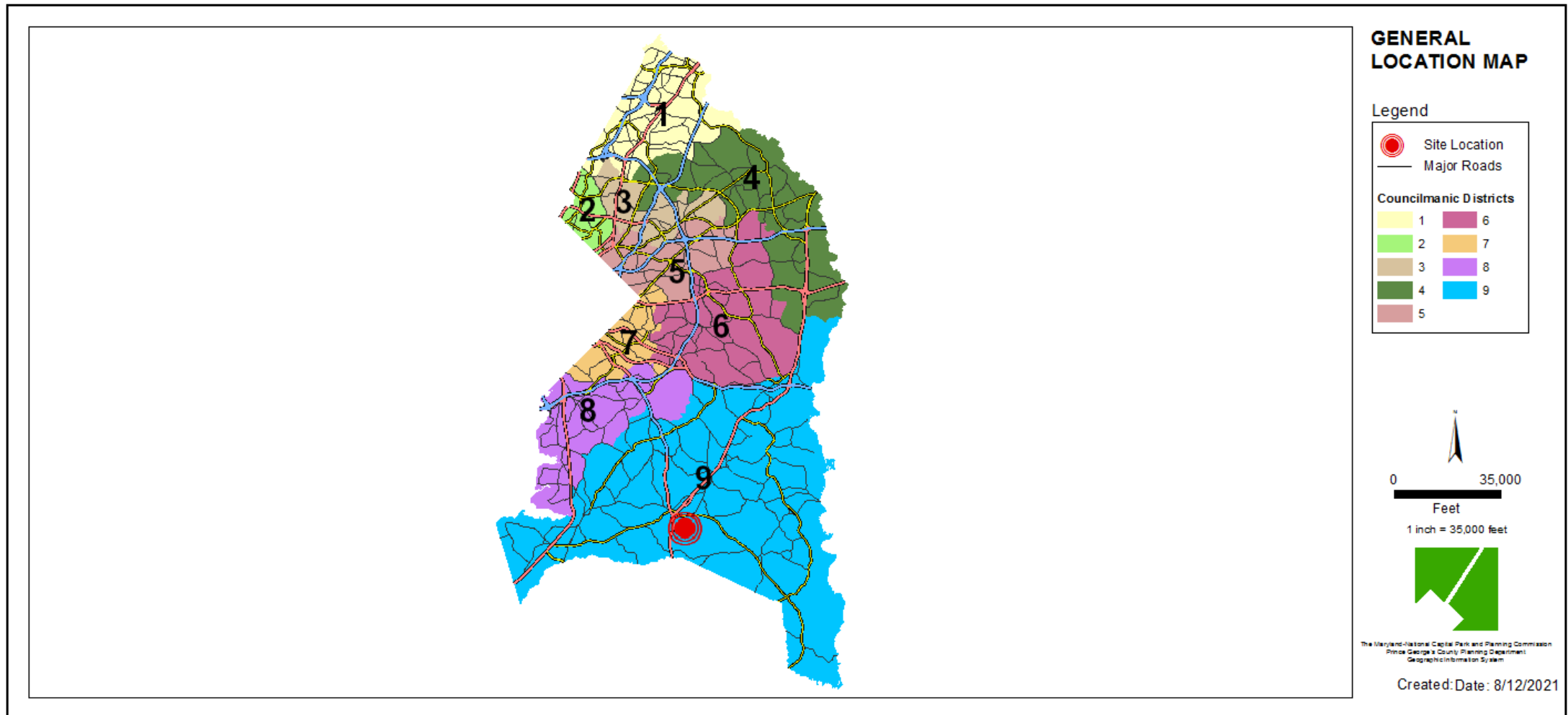
Staff Recommendation: APPROVAL with conditions



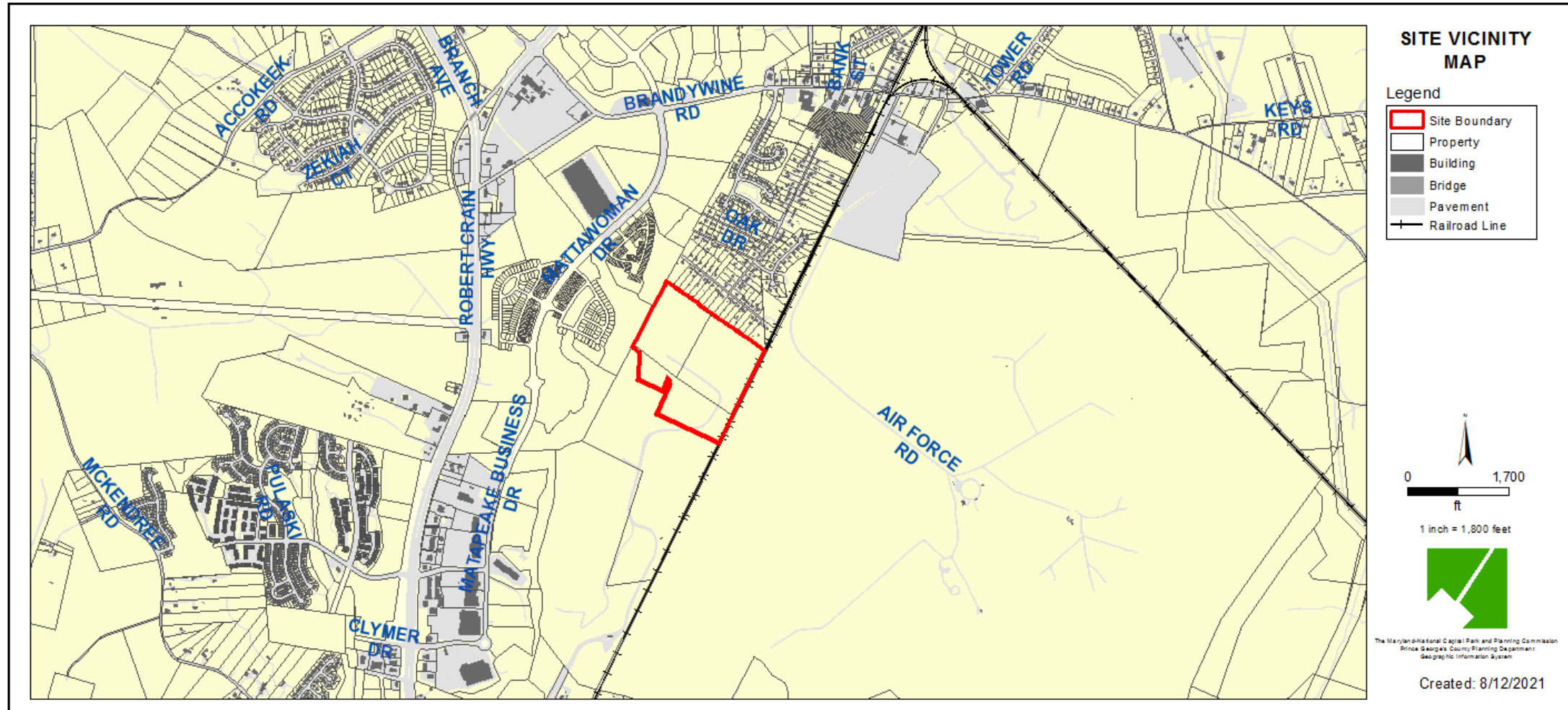
GENERAL LOCATION MAP

Council District: 09

Planning Area: 85A

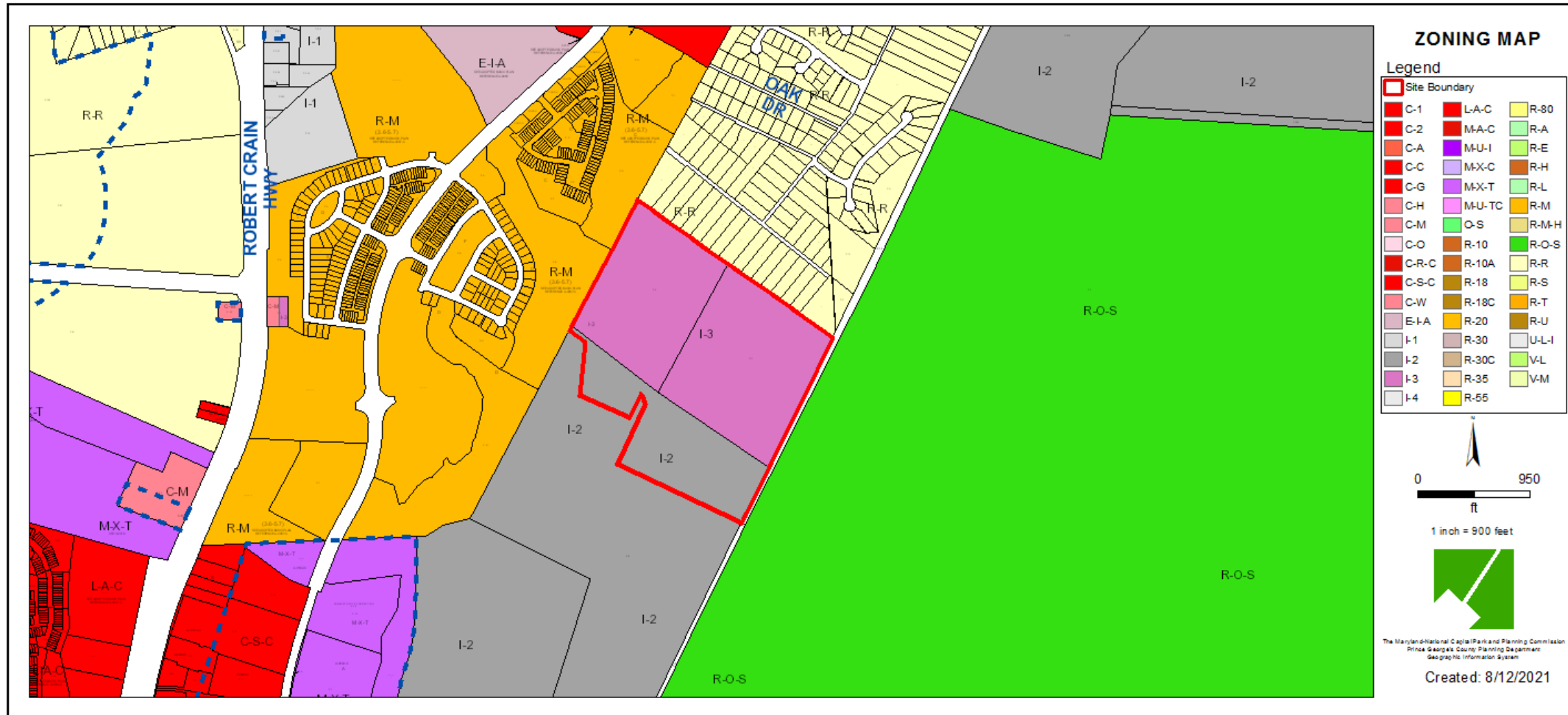


SITE VICINITY MAP



ZONING MAP

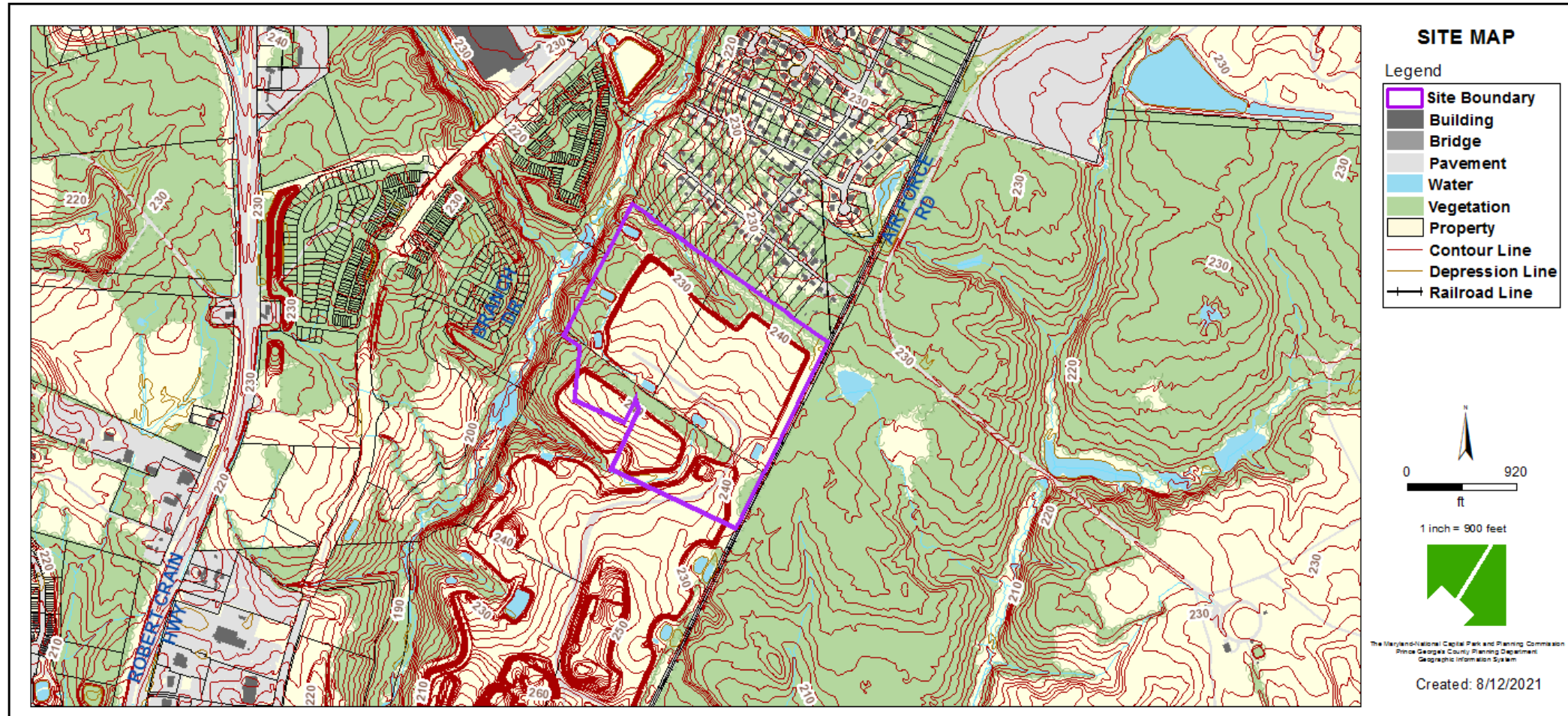
Property Zone: I-2/I-3



AERIAL MAP



SITE MAP



**MASTER PLAN
RIGHT-OF-WAY**

Legend

- Site Boundary
- Property
- Master Plan Right-of-Way
 - Arterial
 - Collector
 - Expressway
 - Freeway
 - Industrial
 - Major Collector
 - Primary


0 950
ft
1 inch = 900 feet

The Maryland-National Capital Park and Planning Commission
Prince George's County Planning Department
Geographic Information System

Created: 8/12/2021

CRITICAL INTERSECTIONS

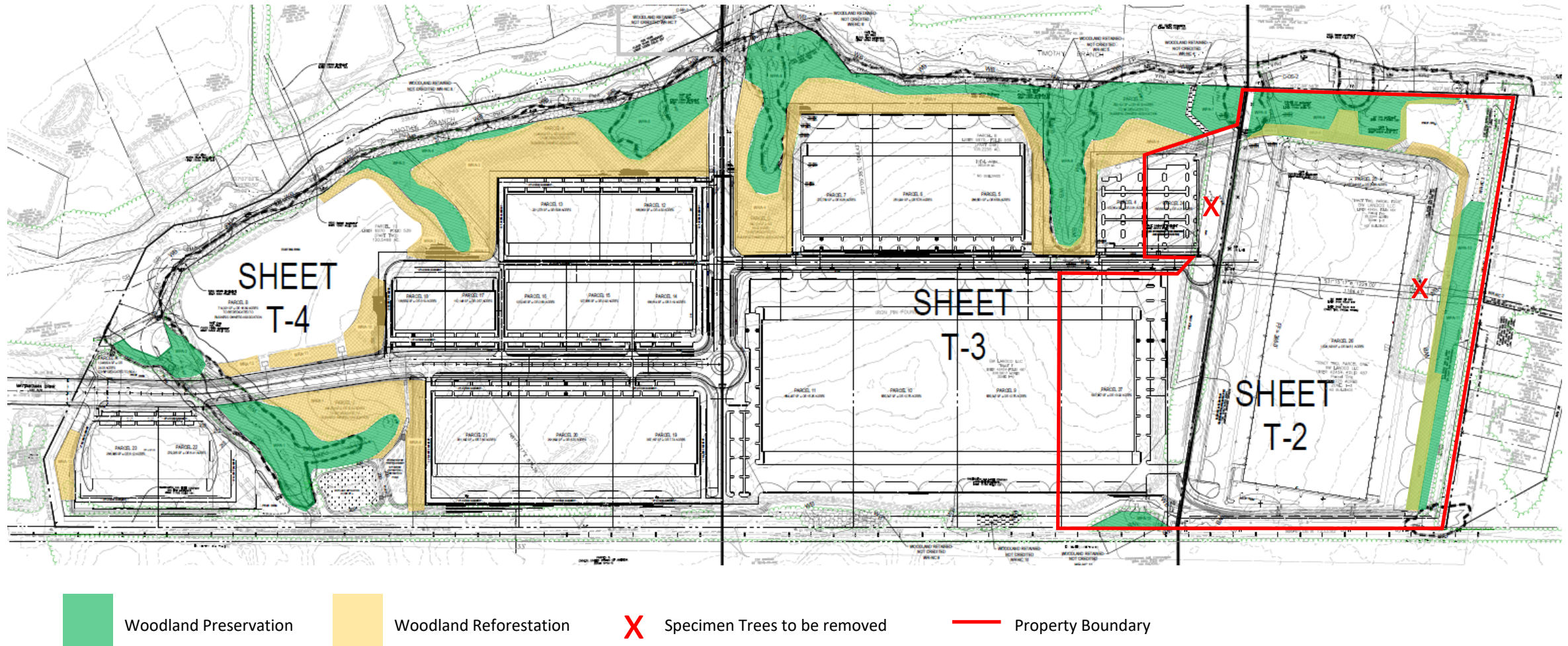


 Critical Intersections

PRELIMINARY PLAN



TYPE I TREE CONSERVATION PLAN



STAFF RECOMMENDATION

APPROVAL with conditions

- 17 Conditions

Major/Minor Issues:

- N/A

Applicant Community Engagement:

- Informational Mailing: January 19, 2021
- Acceptance Mailing: June 15, 2021