

DANIEL'S PARK

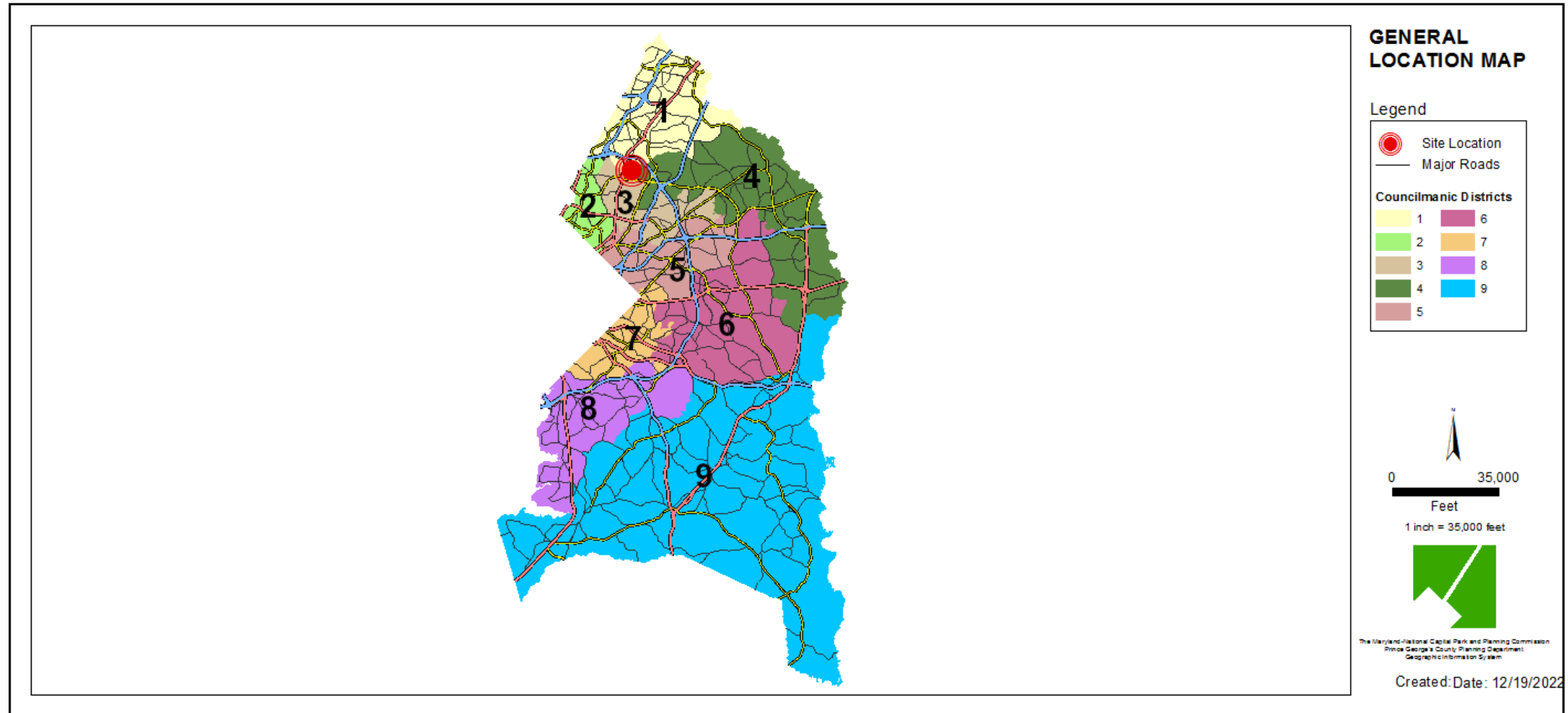
Preliminary Plan of Subdivision
Staff Recommendation: Disapproval



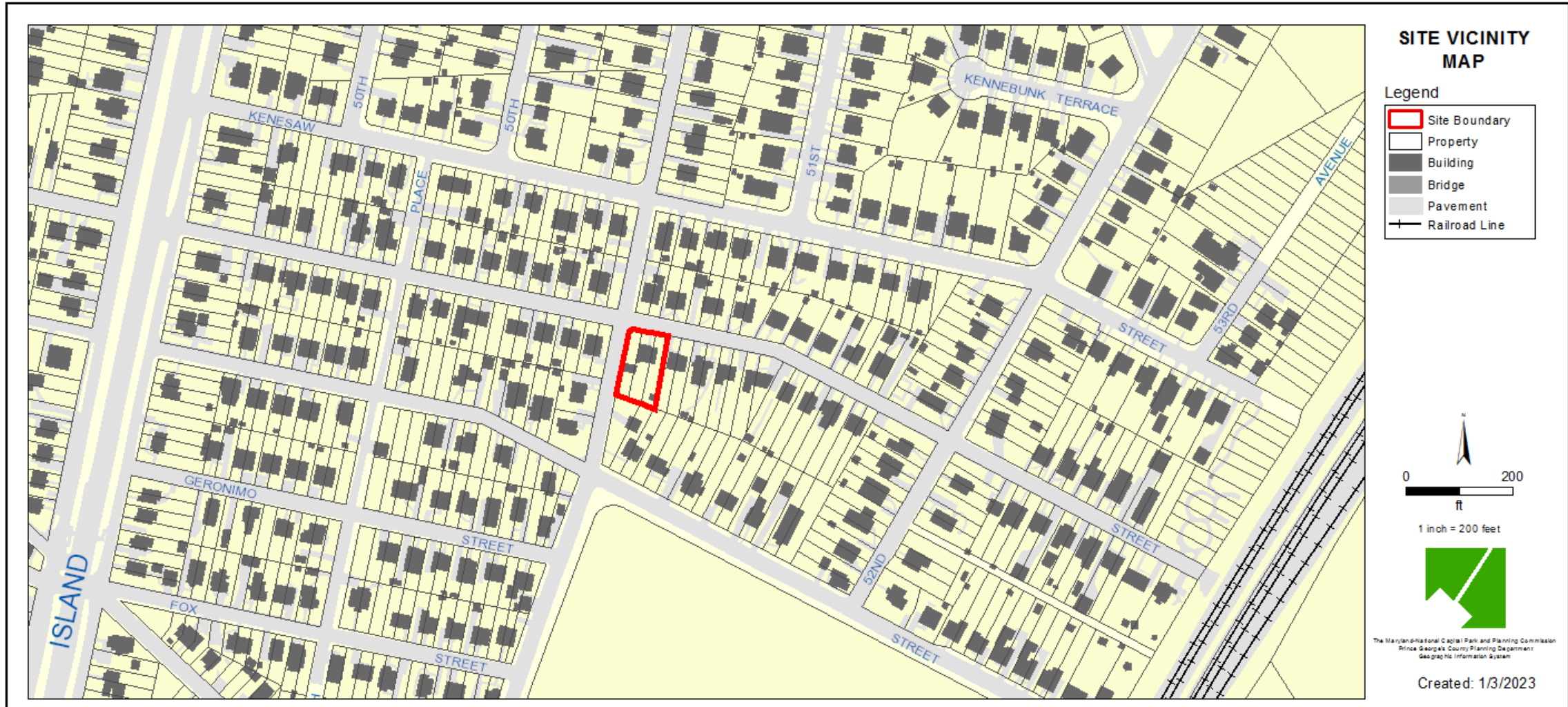
GENERAL LOCATION MAP

Council District: 01

Planning Area: 66



SITE VICINITY MAP



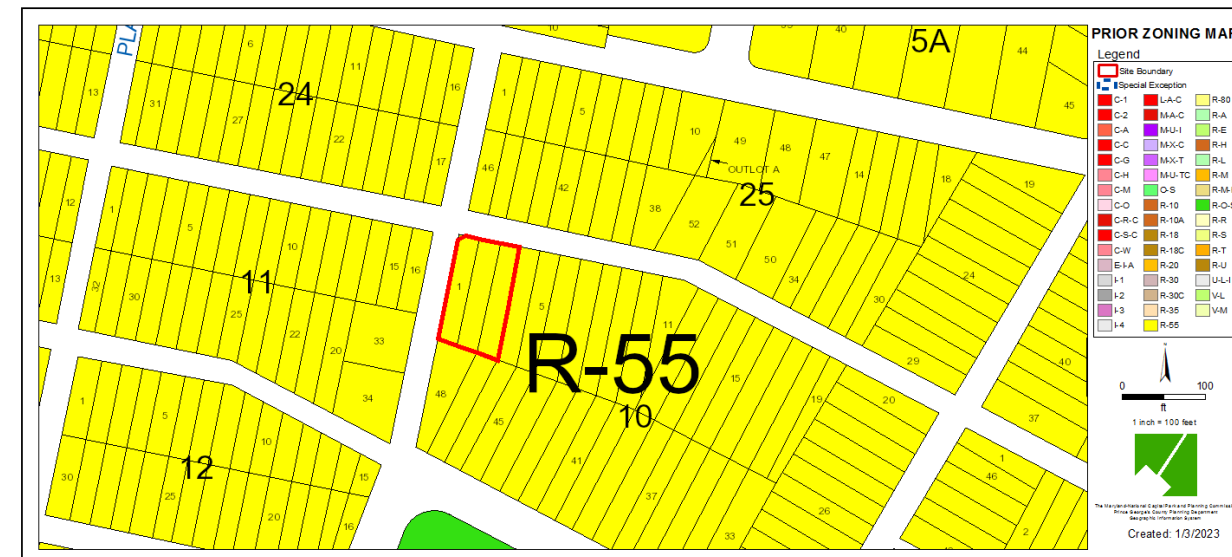
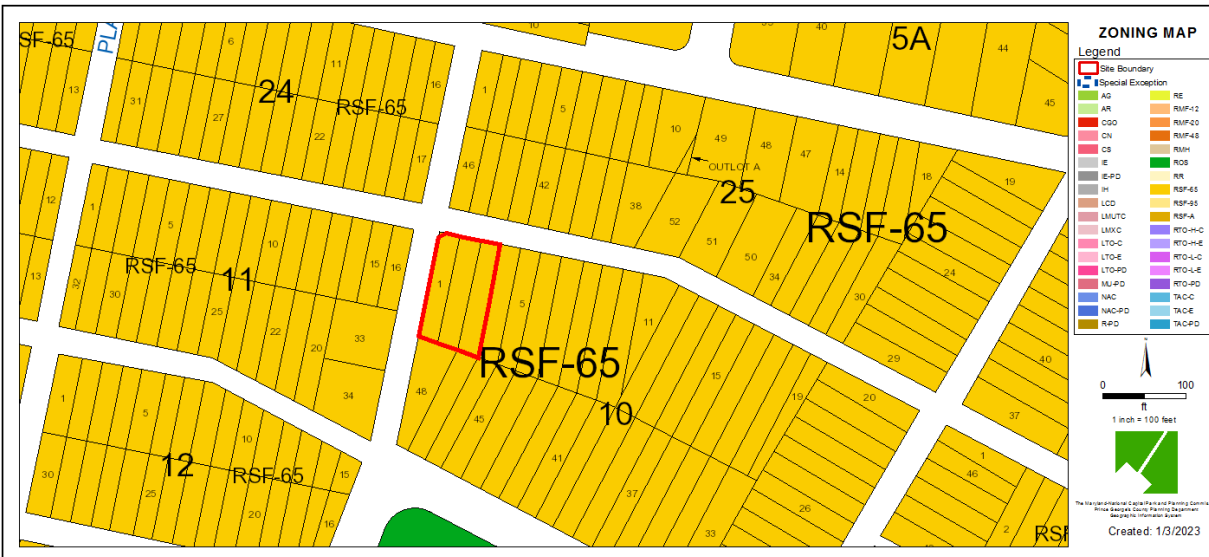
ZONING MAP (CURRENT & PRIOR)

Current Property Zone: RSF-65

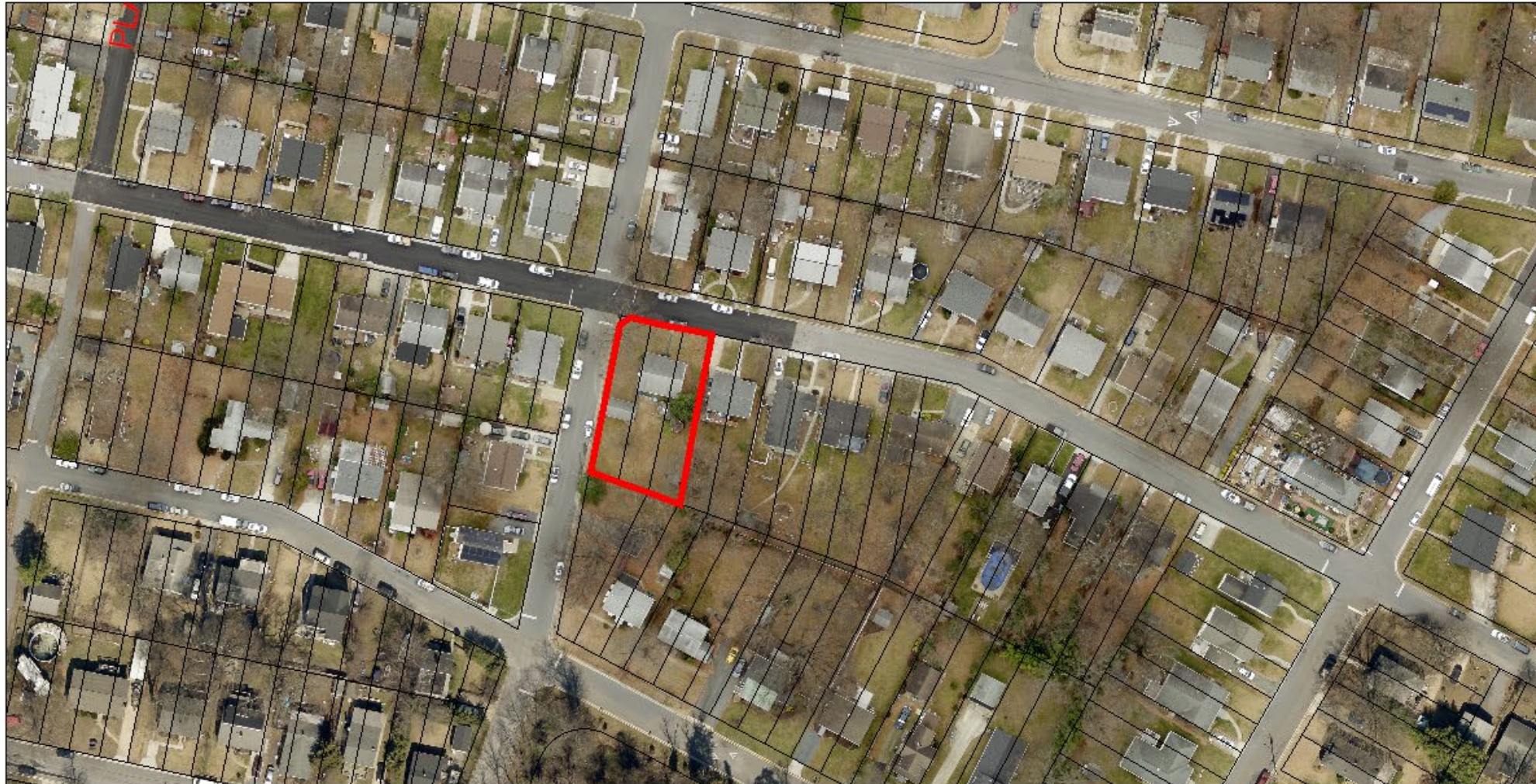
Prior Property Zone: R-55

CURRENT ZONING MAP

PRIOR ZONING MAP



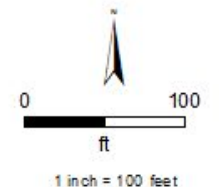
AERIAL MAP



AERIAL MAP

Legend

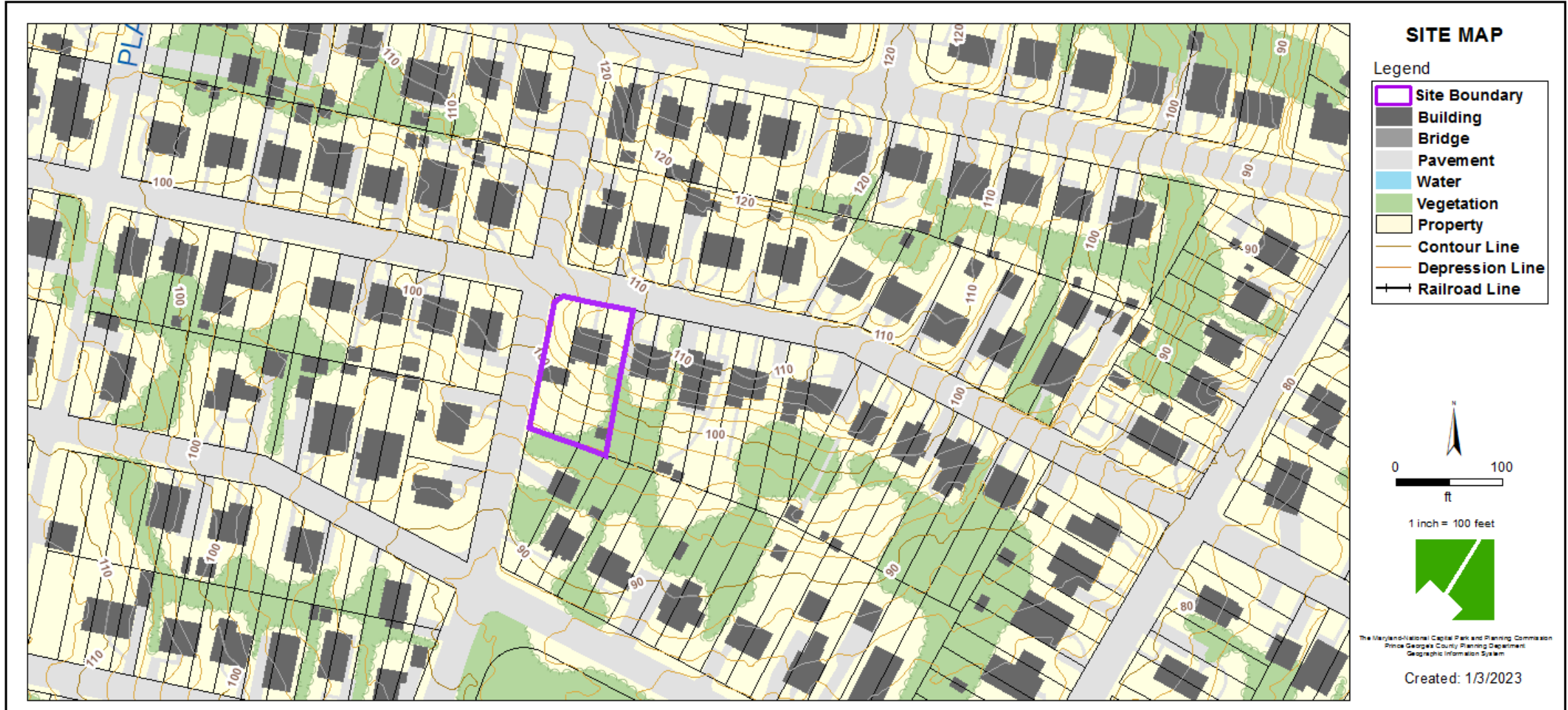
-  Site Boundary
 -  Property
- IMAGERY FROM
EARLY 2022



The Maryland-National Capital Park and Planning Commission
Prince George's County Planning Department
Geographic Information System

Created: 1/3/2023

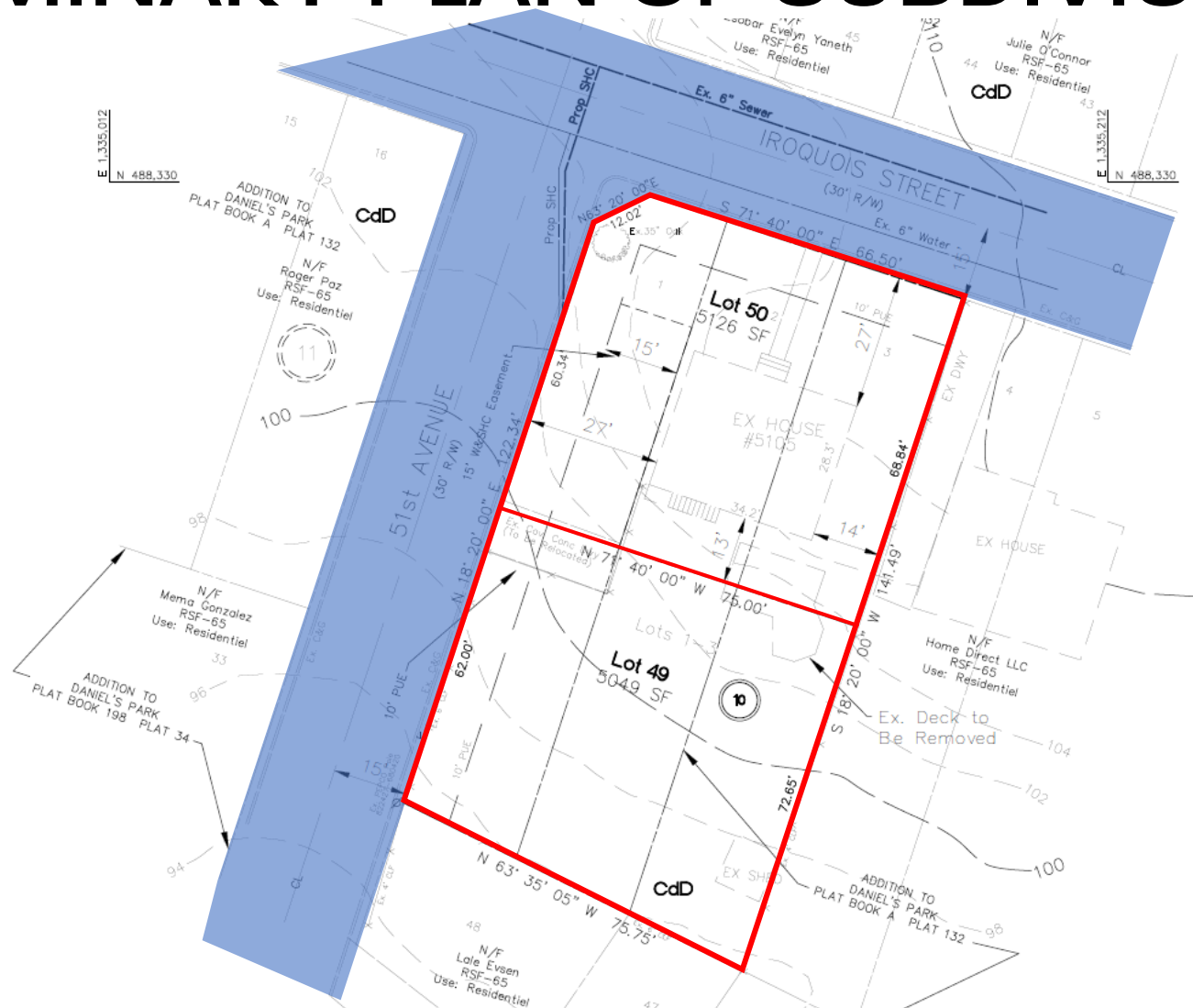
SITE MAP



BIRD'S-EYE VIEW WITH APPROXIMATE SITE BOUNDARY OUTLINED



PRELIMINARY PLAN OF SUBDIVISION



STAFF RECOMMENDATION

Disapproval

- 4-22019

Major Issues:

- Lots proposed are not in conformance with the Zoning Ordinance Regulations.

Applicant Required Mailings:

- Informational Mailing: 04/18/2022
- Acceptance Mailing: 10/27/2022