

# KENILWORTH INTERCHANGE INDUSTRIAL PARK

Preliminary Plan of Subdivision

TCP1-016-2024

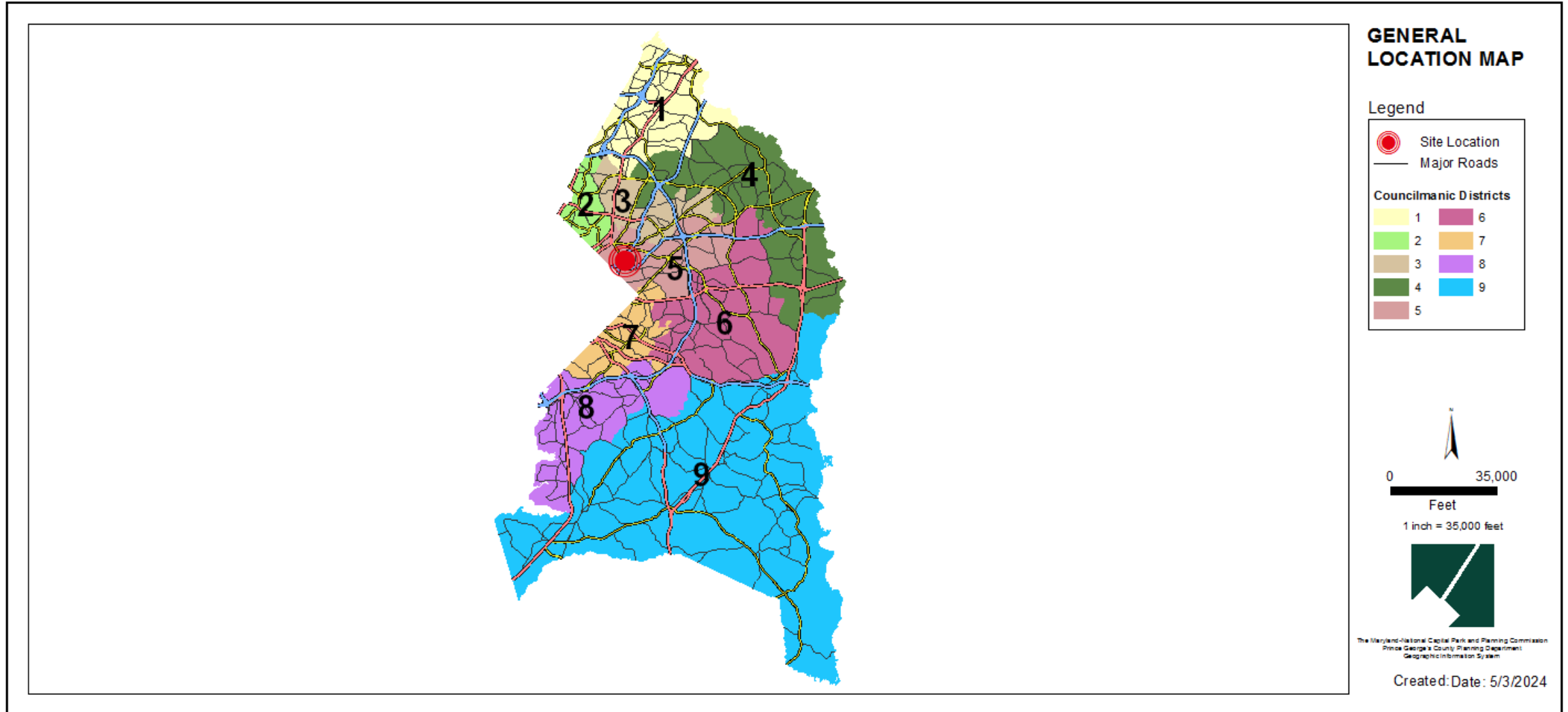
Staff Recommendation: APPROVAL with conditions



# GENERAL LOCATION MAP

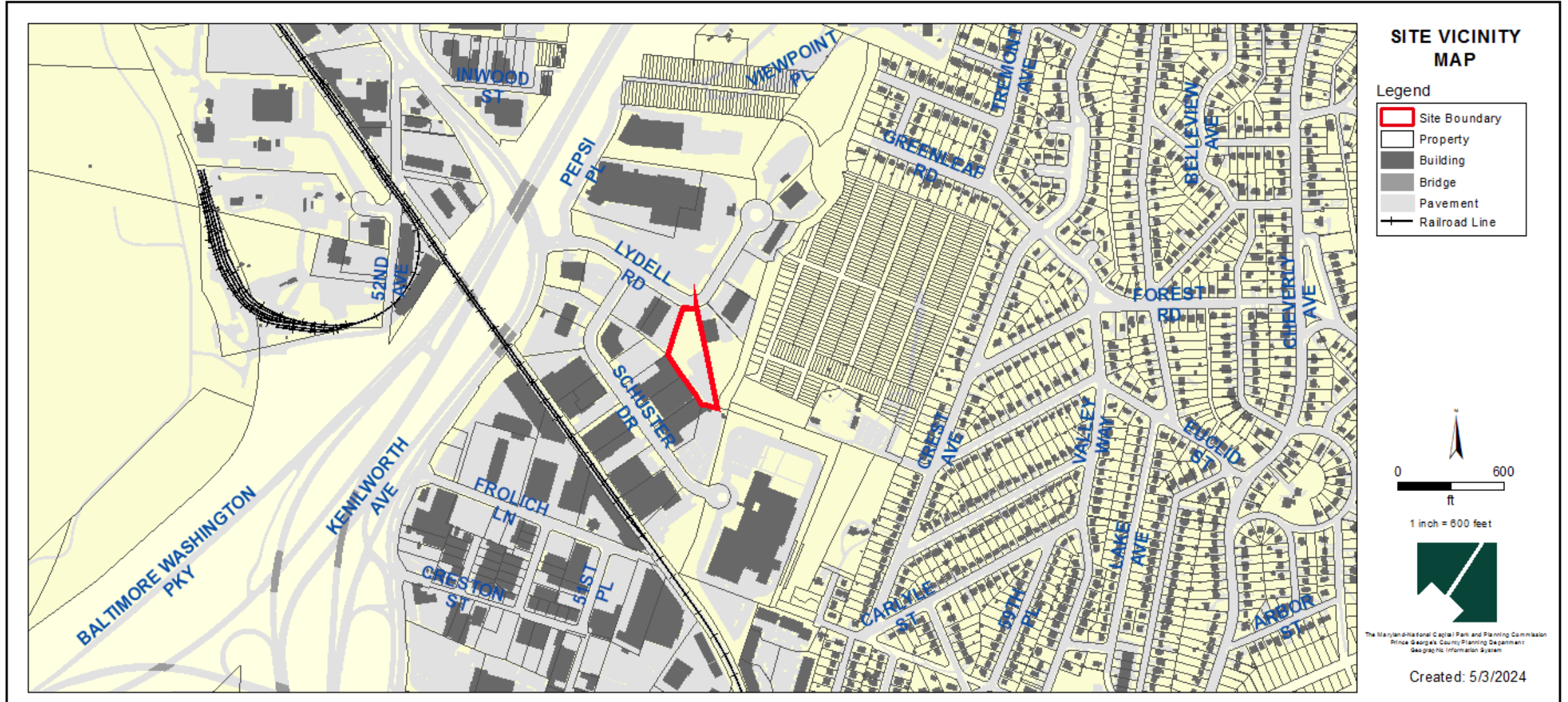
Council District: 05

Planning Area: 69



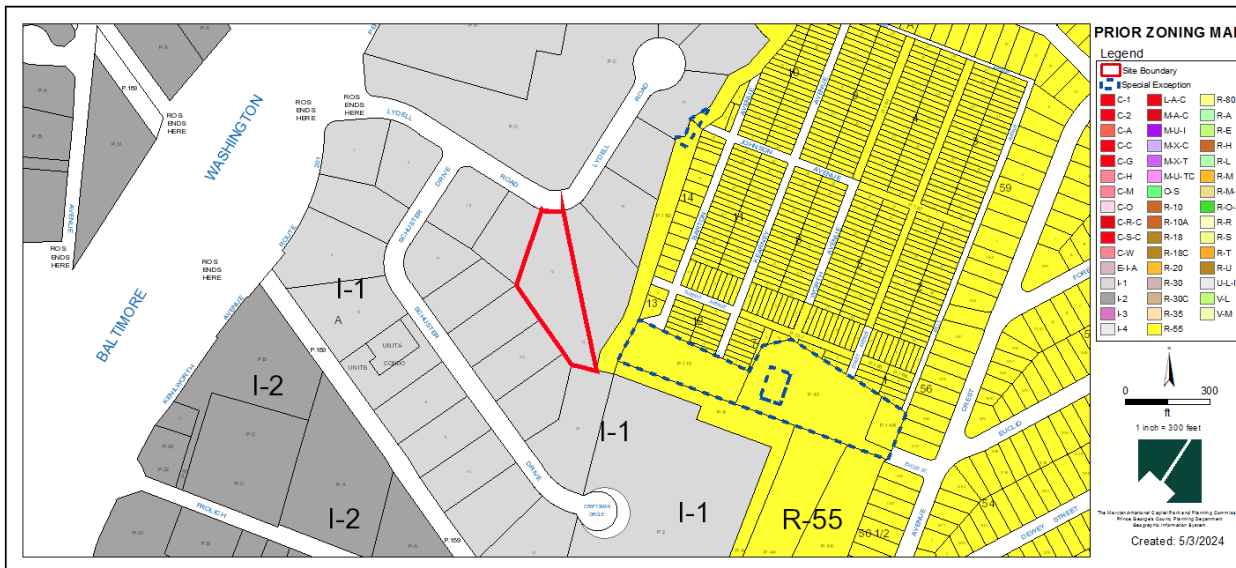


# SITE VICINITY MAP



# ZONING MAP (PRIOR AND CURRENT)

PRIOR ZONING MAP: I-1



CURRENT ZONING MAP: IE





# AERIAL MAP



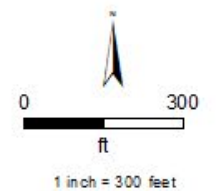
## AERIAL MAP

### Legend

Site Boundary

Property

IMAGERY FROM  
May 2023

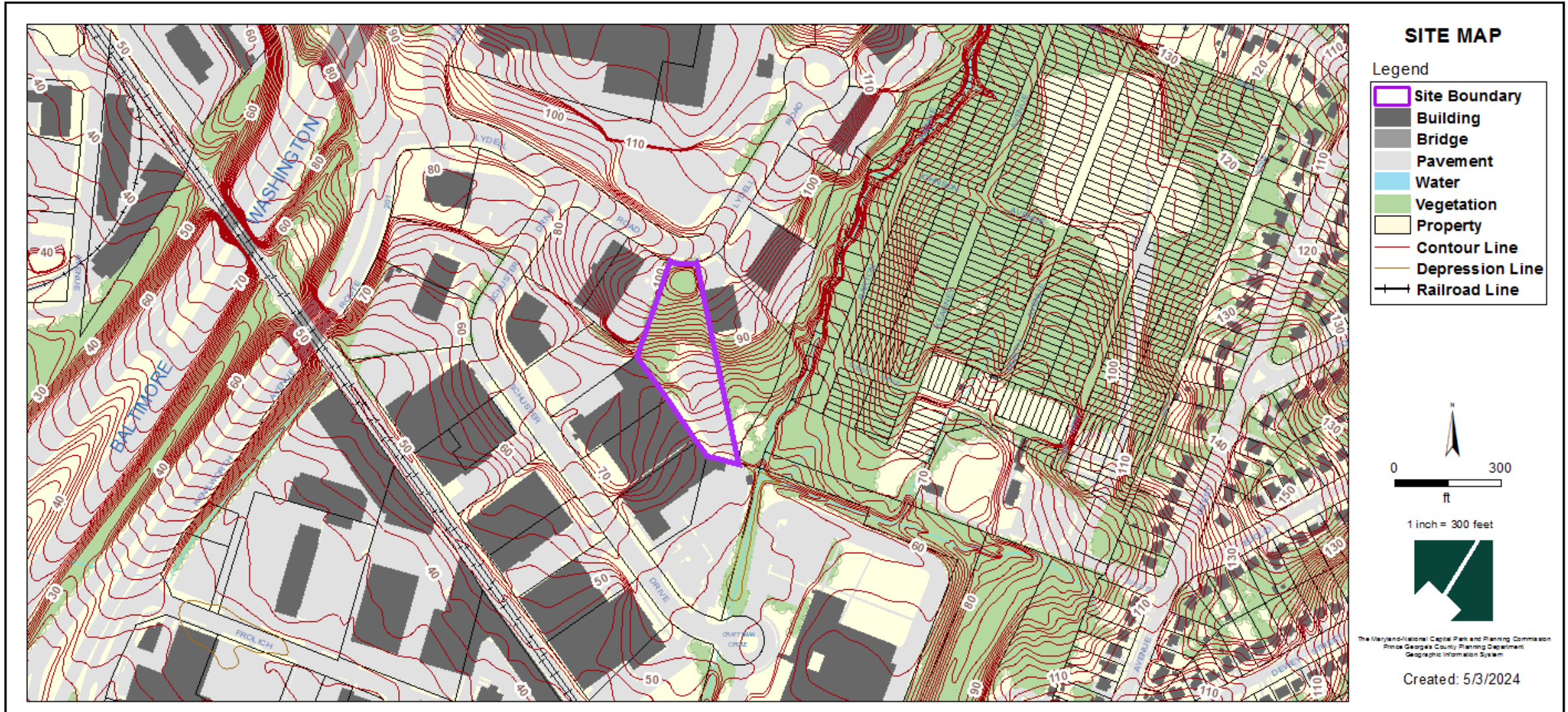


The Maryland-National Capital Park and Planning Commission  
Prince George's County Planning Department  
Geographic Information System

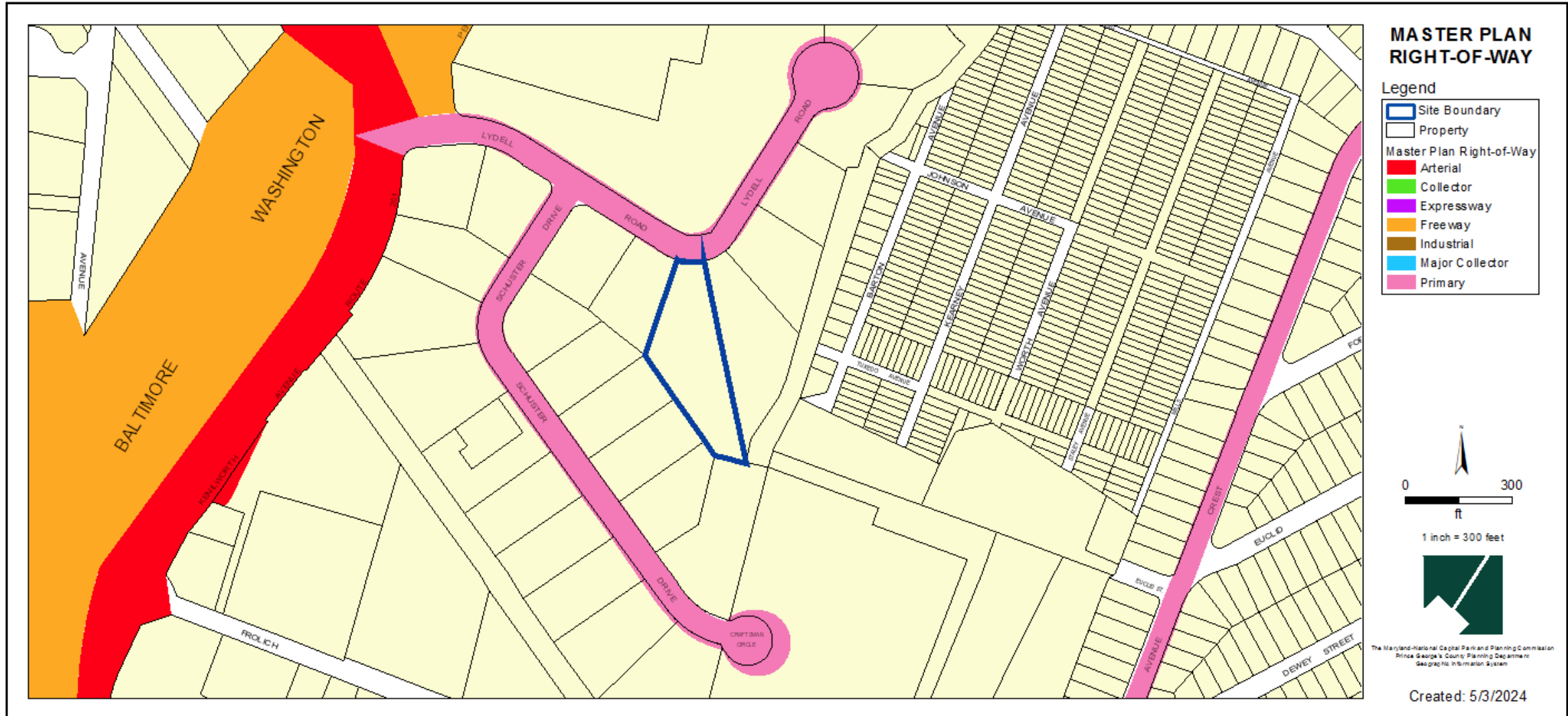
Created: 5/3/2024



# SITE MAP



# MASTER PLAN RIGHT-OF-WAY MAP



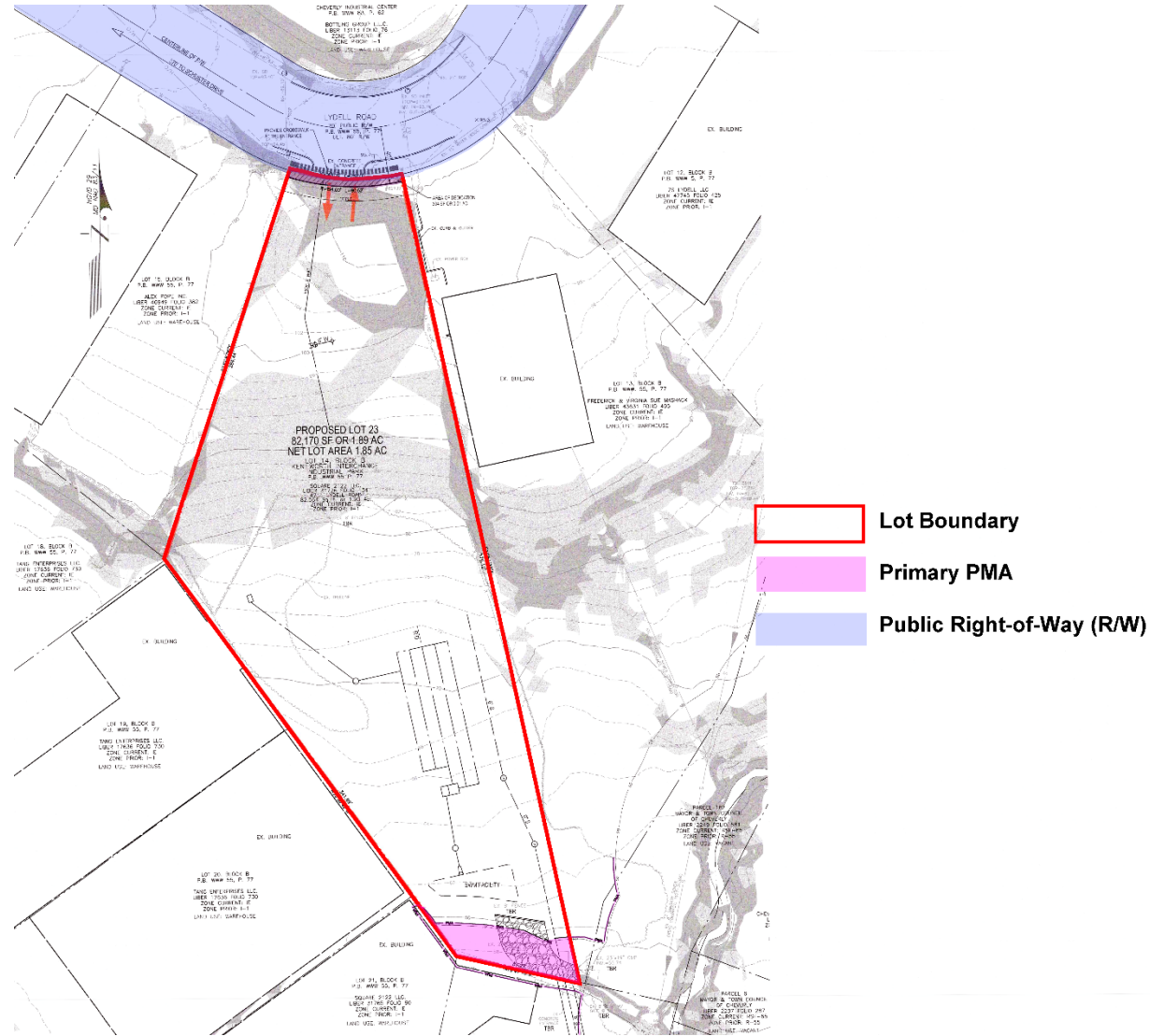


# BIRD'S-EYE VIEW WITH APPROXIMATE SITE BOUNDARY OUTLINED

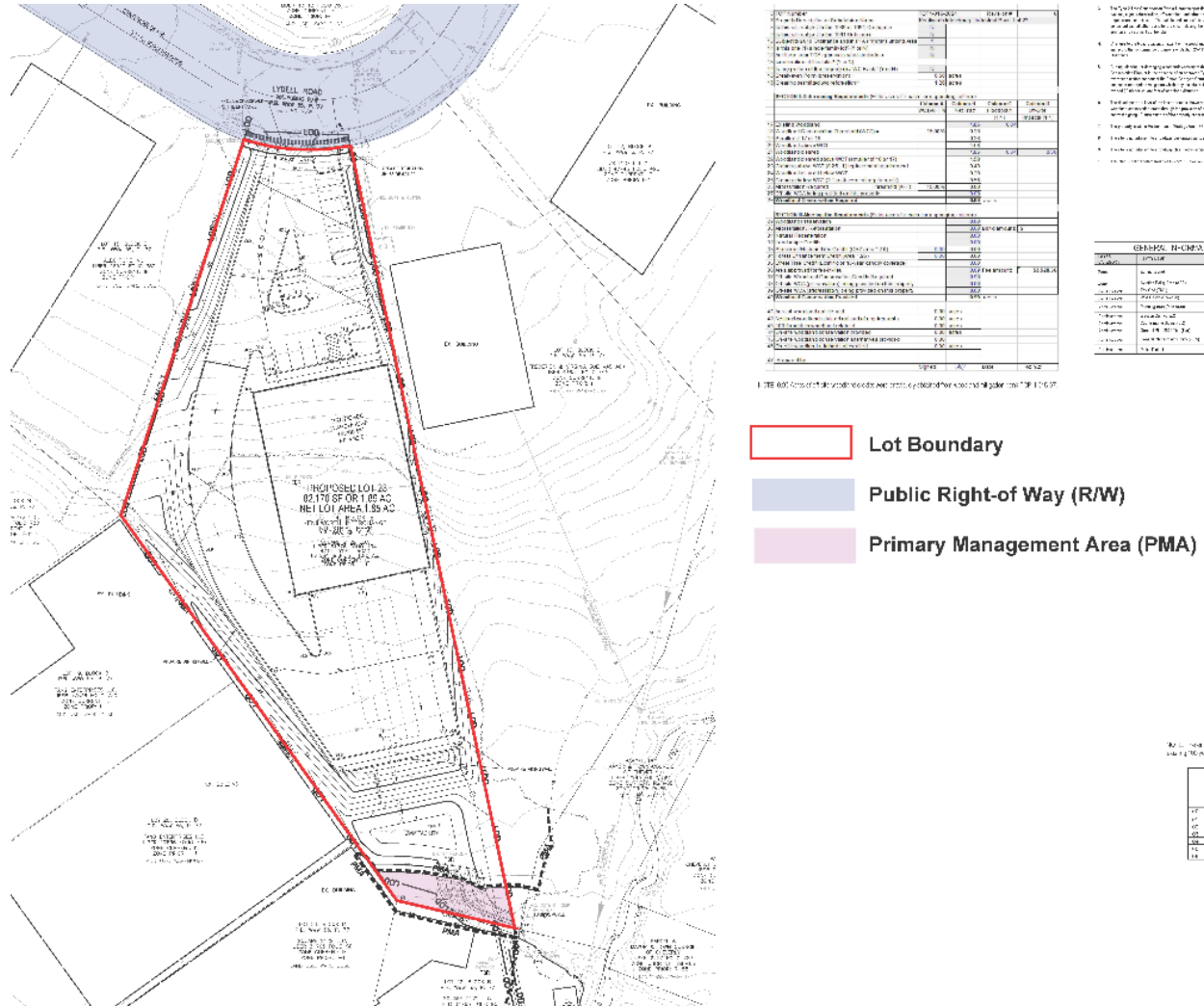




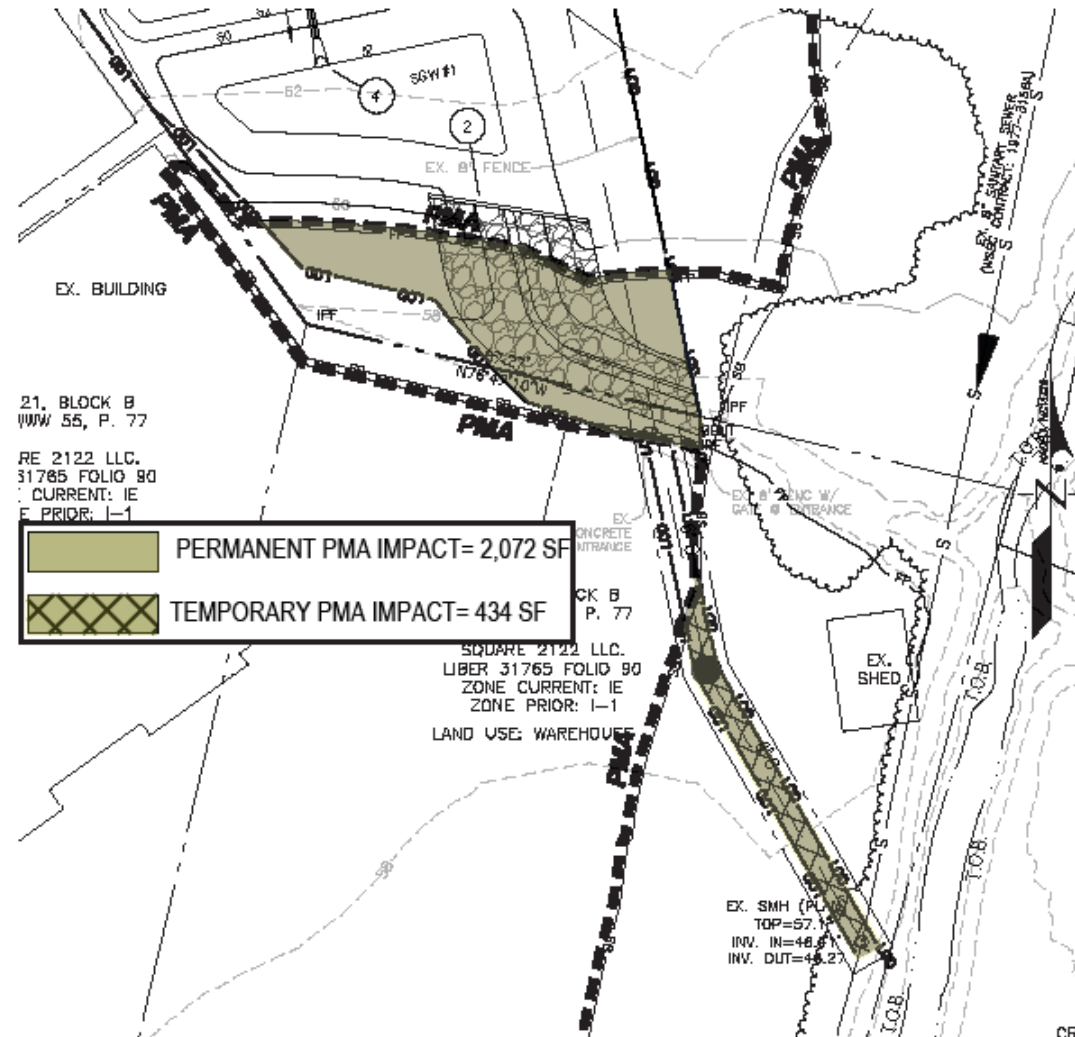
# PRELIMINARY PLAN OF SUBDIVISION



# TYPE I TREE CONSERVATION PLAN







# STAFF RECOMMENDATION

## **APPROVAL** with conditions

- Preliminary Plan of Subdivision 4-24009
- Type 1 Tree Conservation Plan TCP1-016-2024

## **Major Issues:**

- None

## **Applicant Required Mailings:**

- Informational Mailing: 2/27/2024
- Acceptance Mailing: 3/15/2024