

ITEM: 27

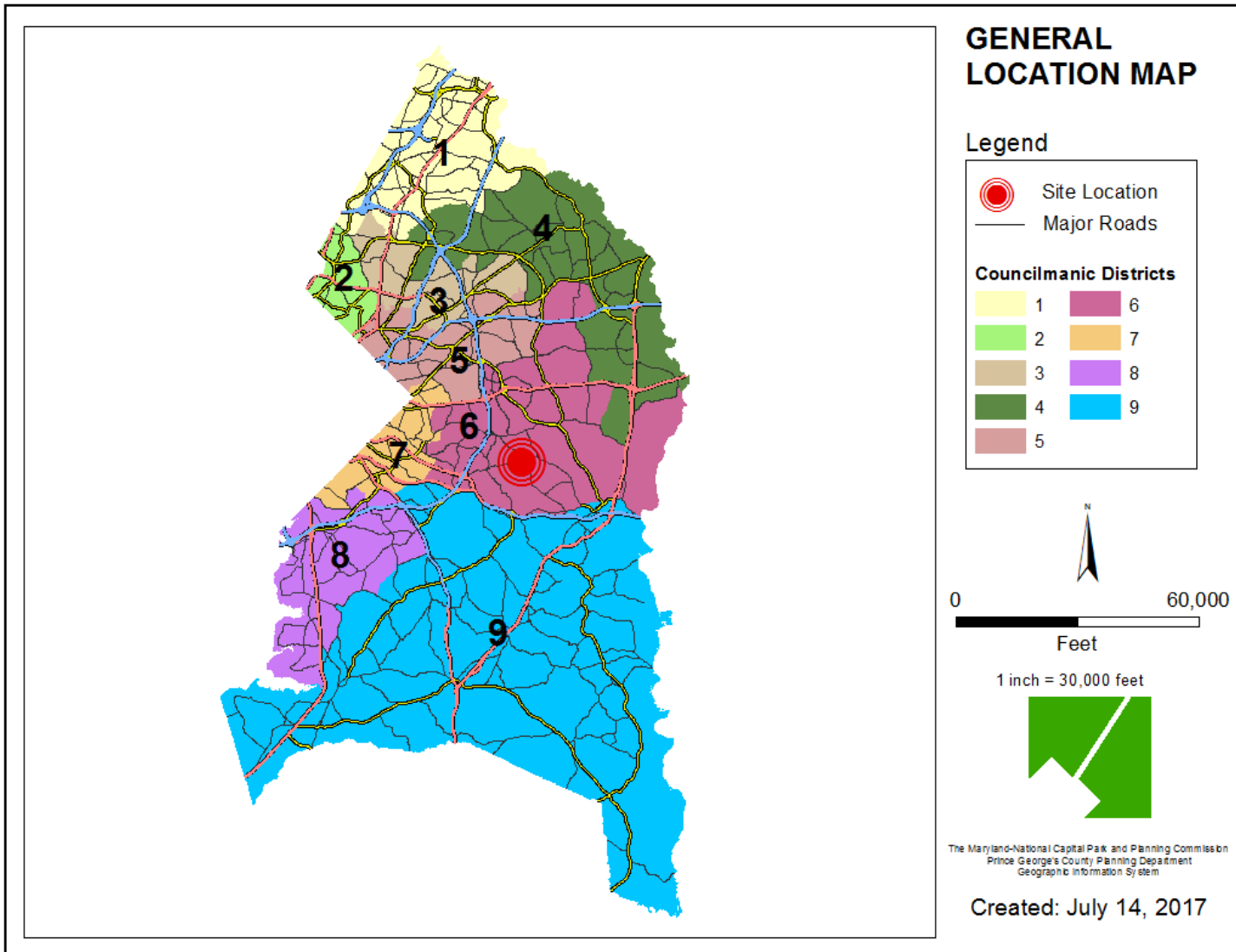
CASE: CDP-1701

THE PRESERVE AT WESTPHALIA

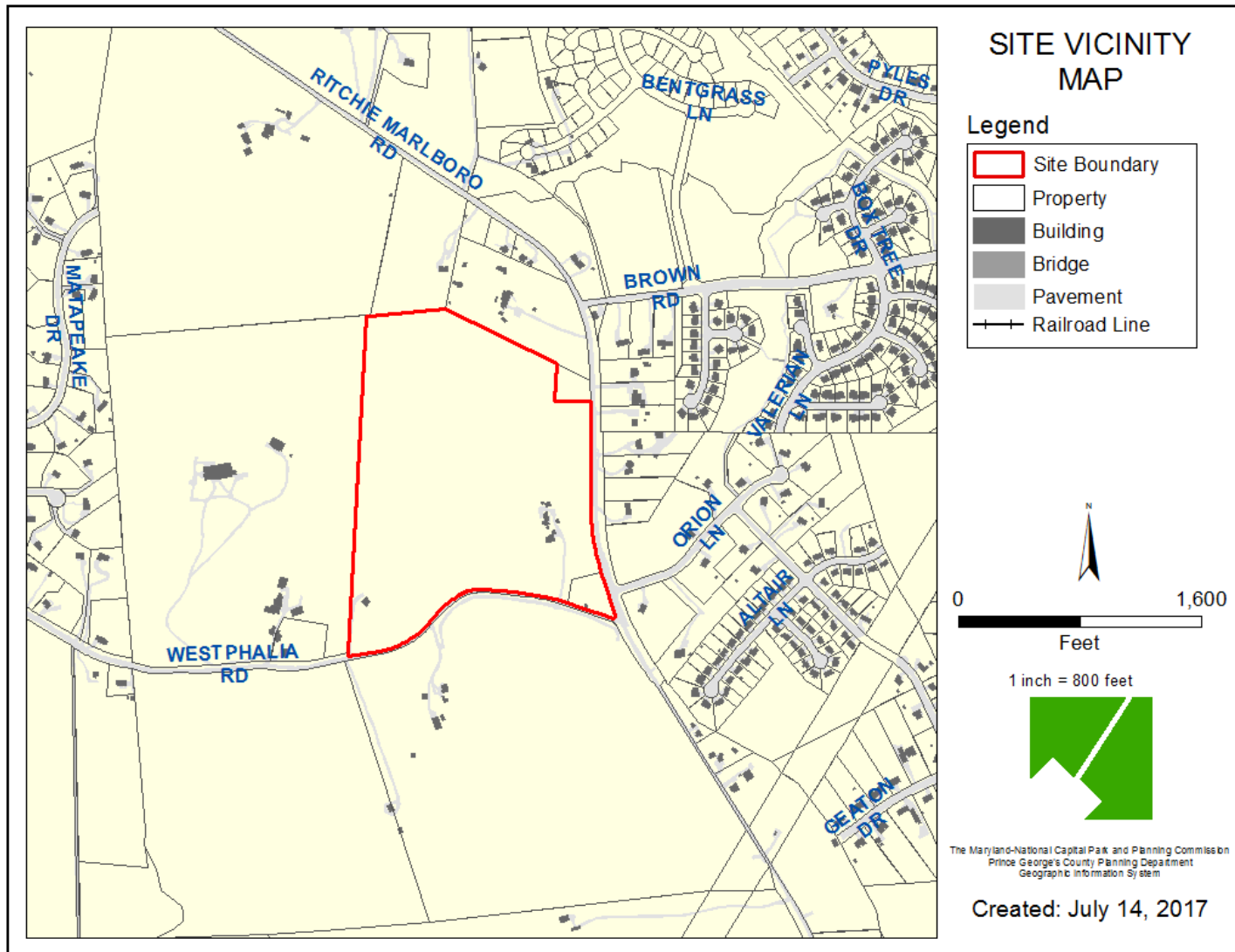
THE PRINCE GEORGE'S COUNTY PLANNING DEPARTMENT



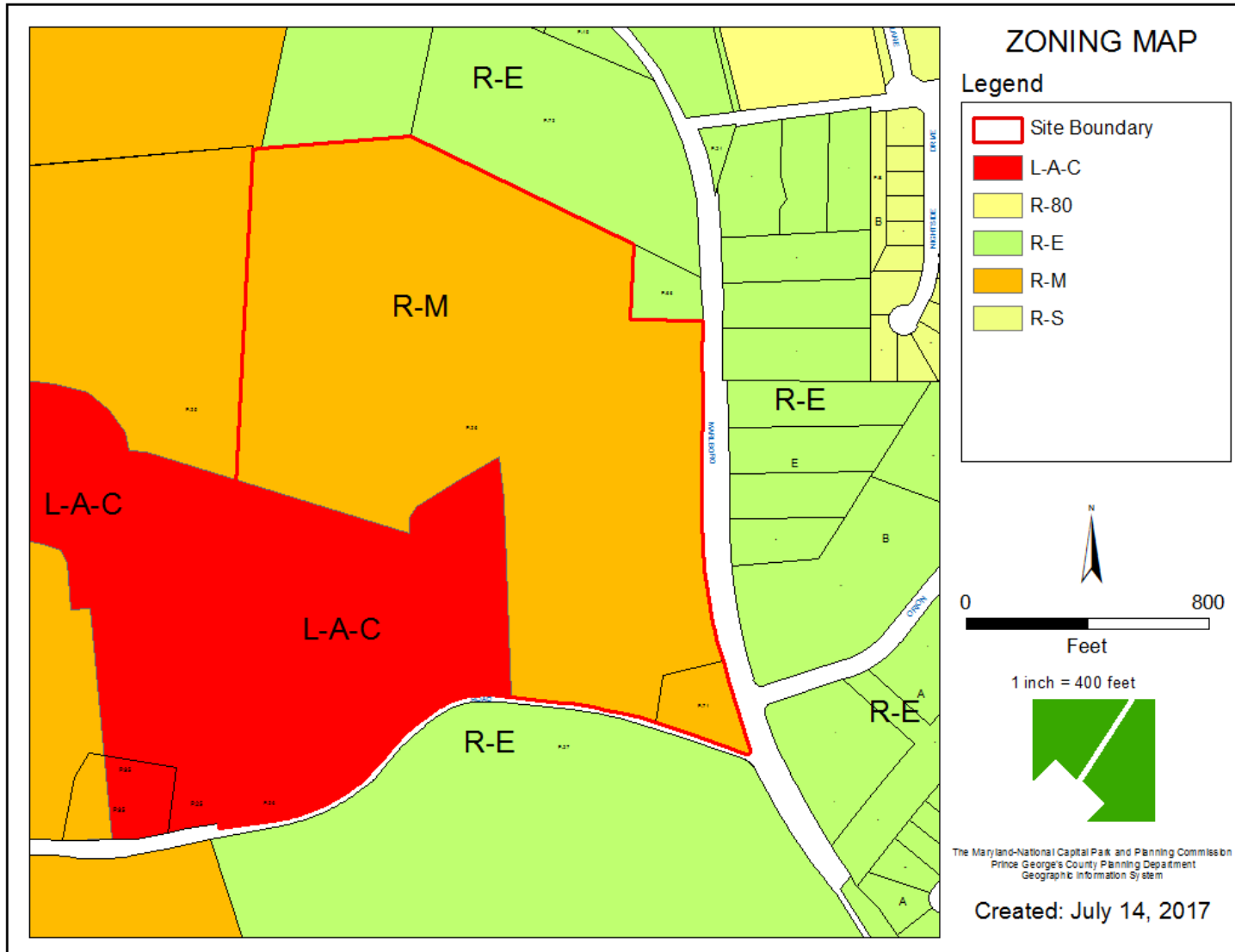
GENERAL LOCATION MAP



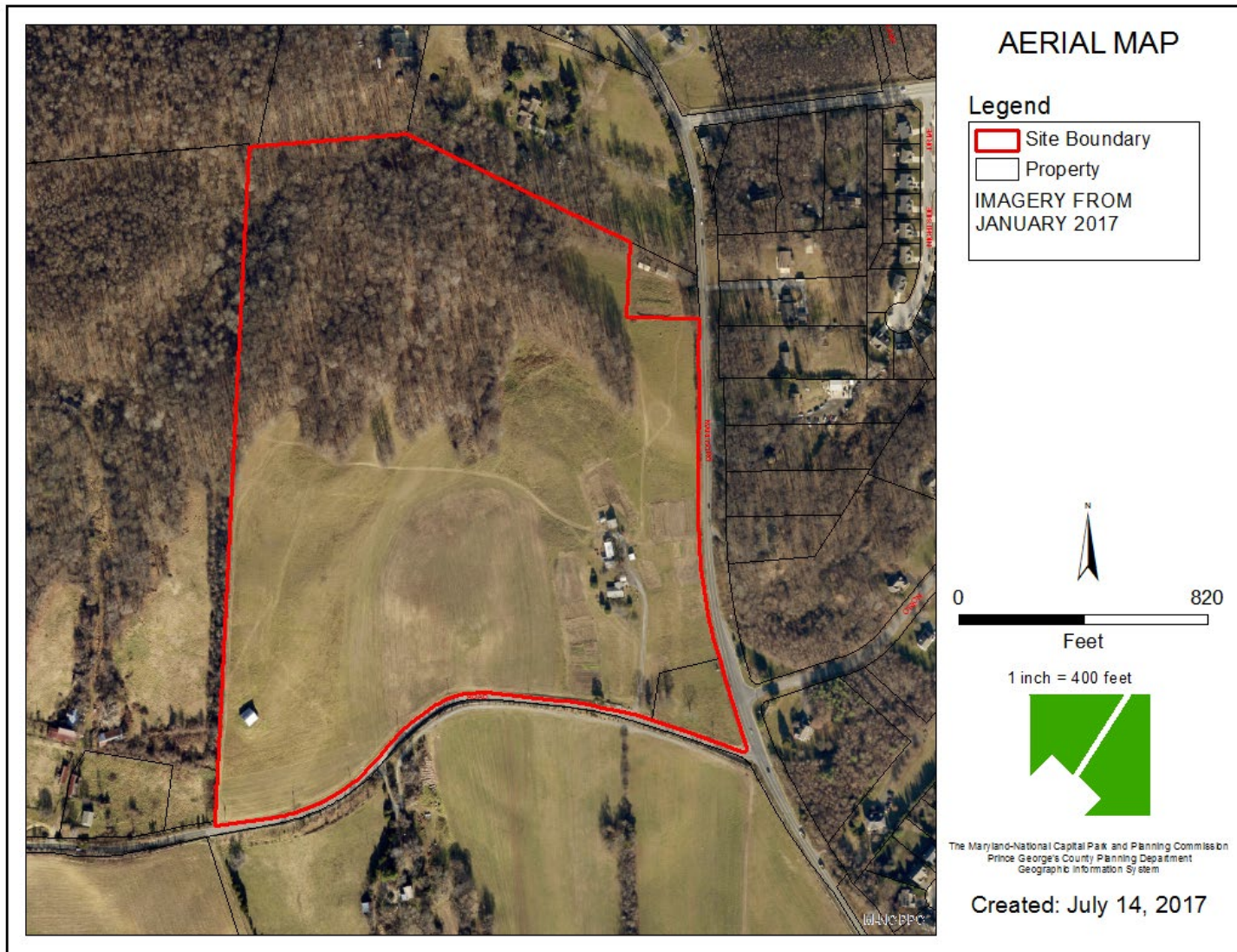
SITE VICINITY



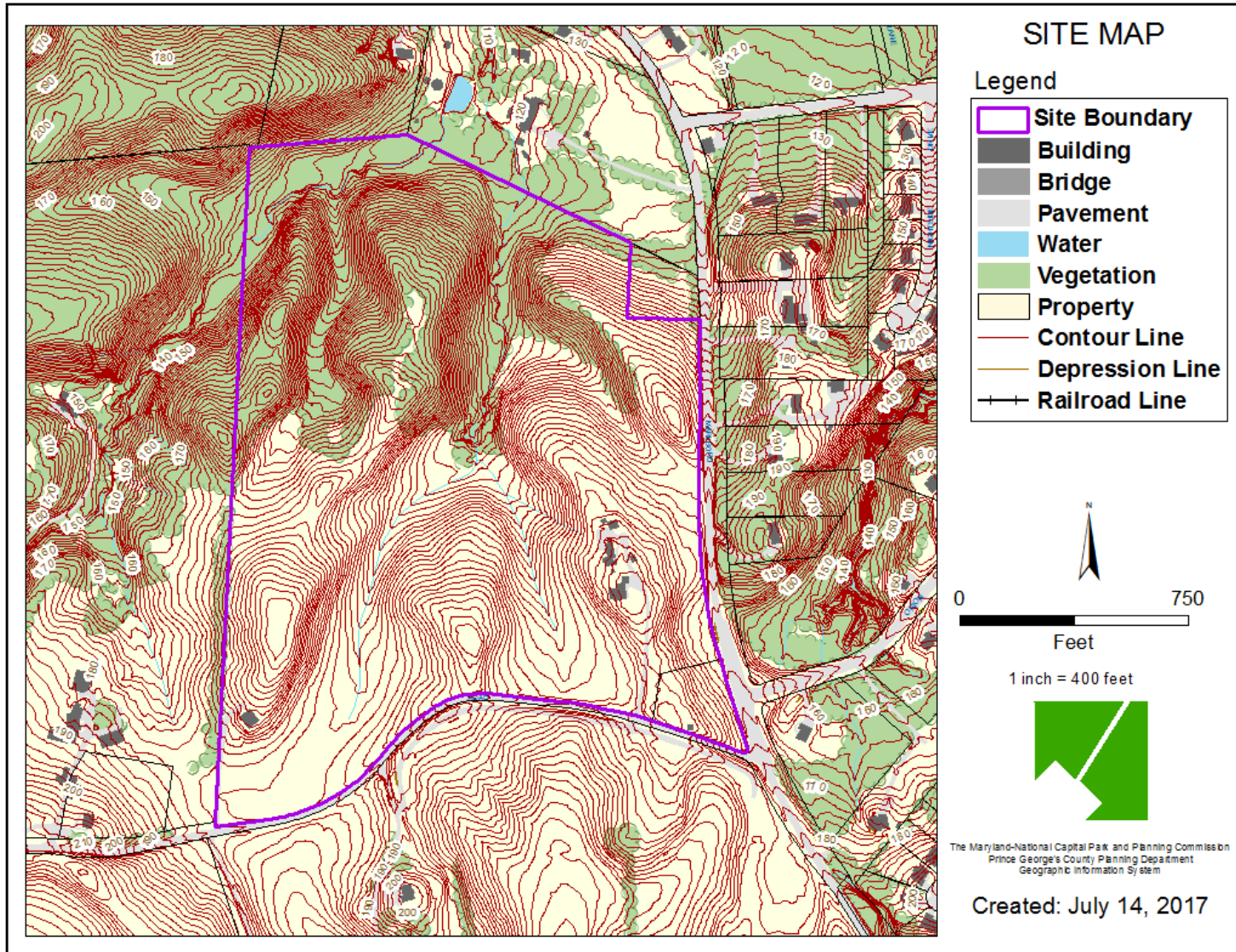
ZONING MAP



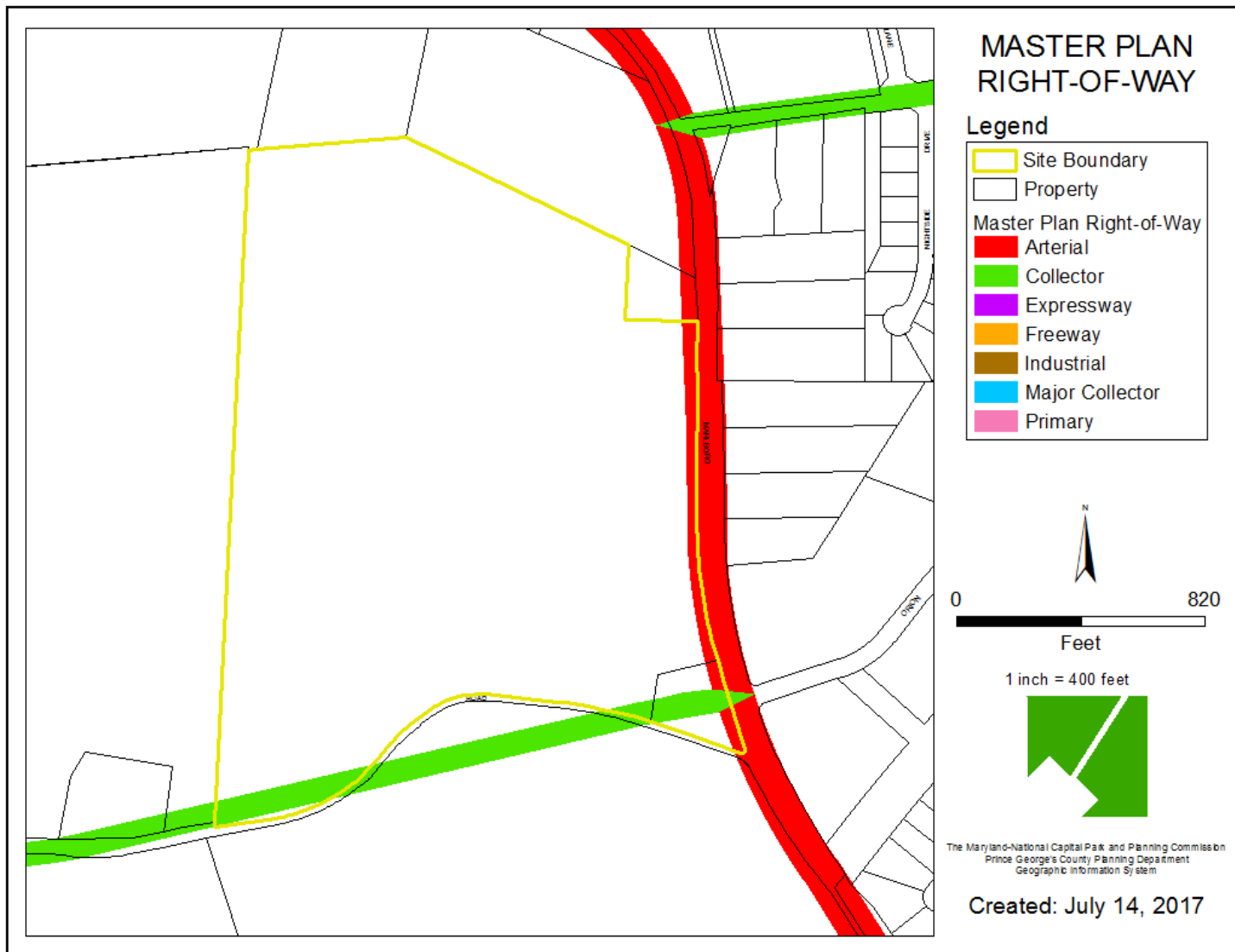
AERIAL MAP



SITE MAP



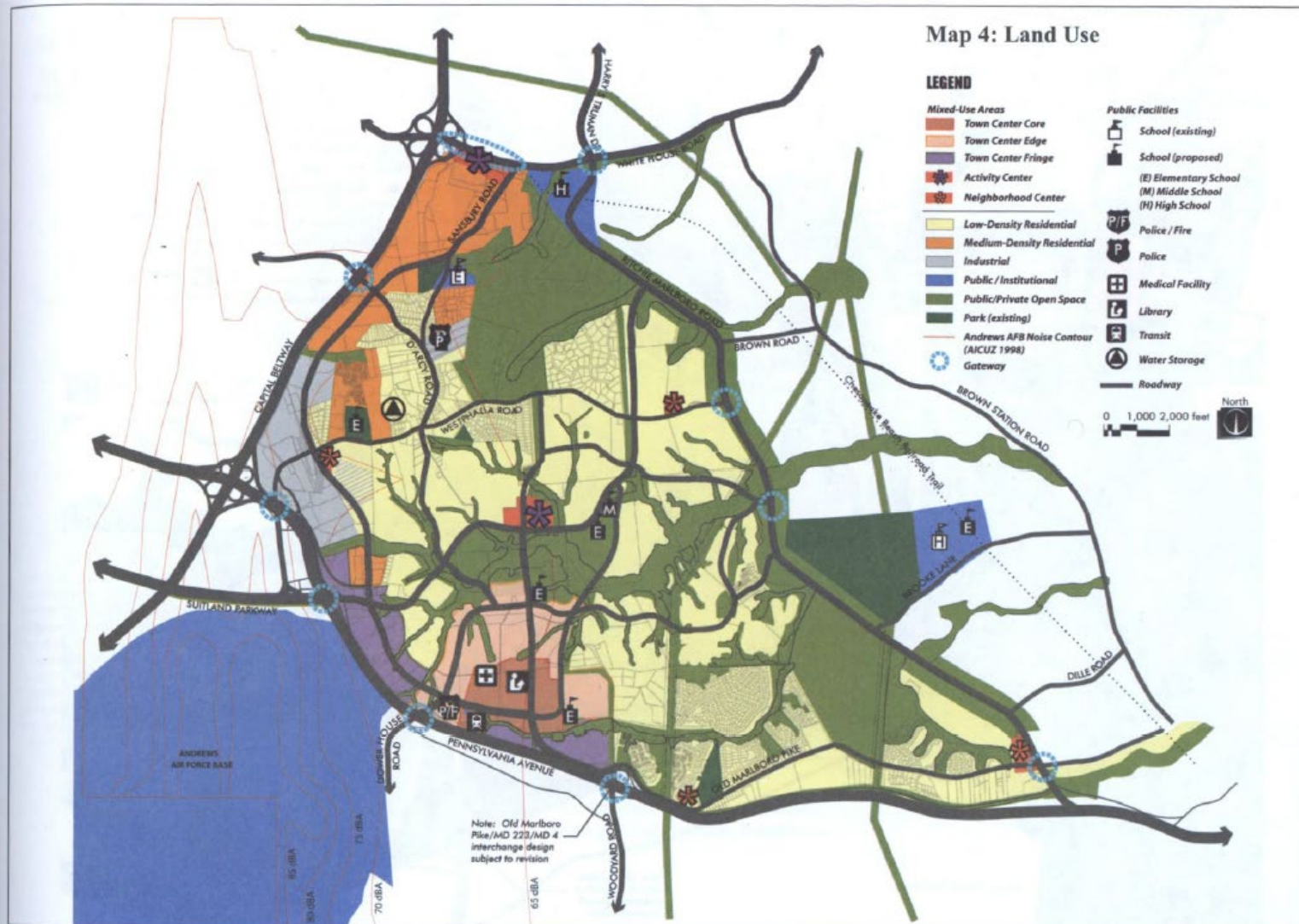
MASTER PLAN RIGHT-OF-WAY MAP



BIRD'S-EYE VIEW WITH APPROXIMATE SITE BOUNDARY OUTLINED



OVERALL SECTOR PLAN



BASIC PLAN (CONCEPT 4, EXHIBIT 58/ TABLE 5: APPROVED ZONING CHANGES, CHANGE NUMBER 9 (PAGE91))

