

ITEM:

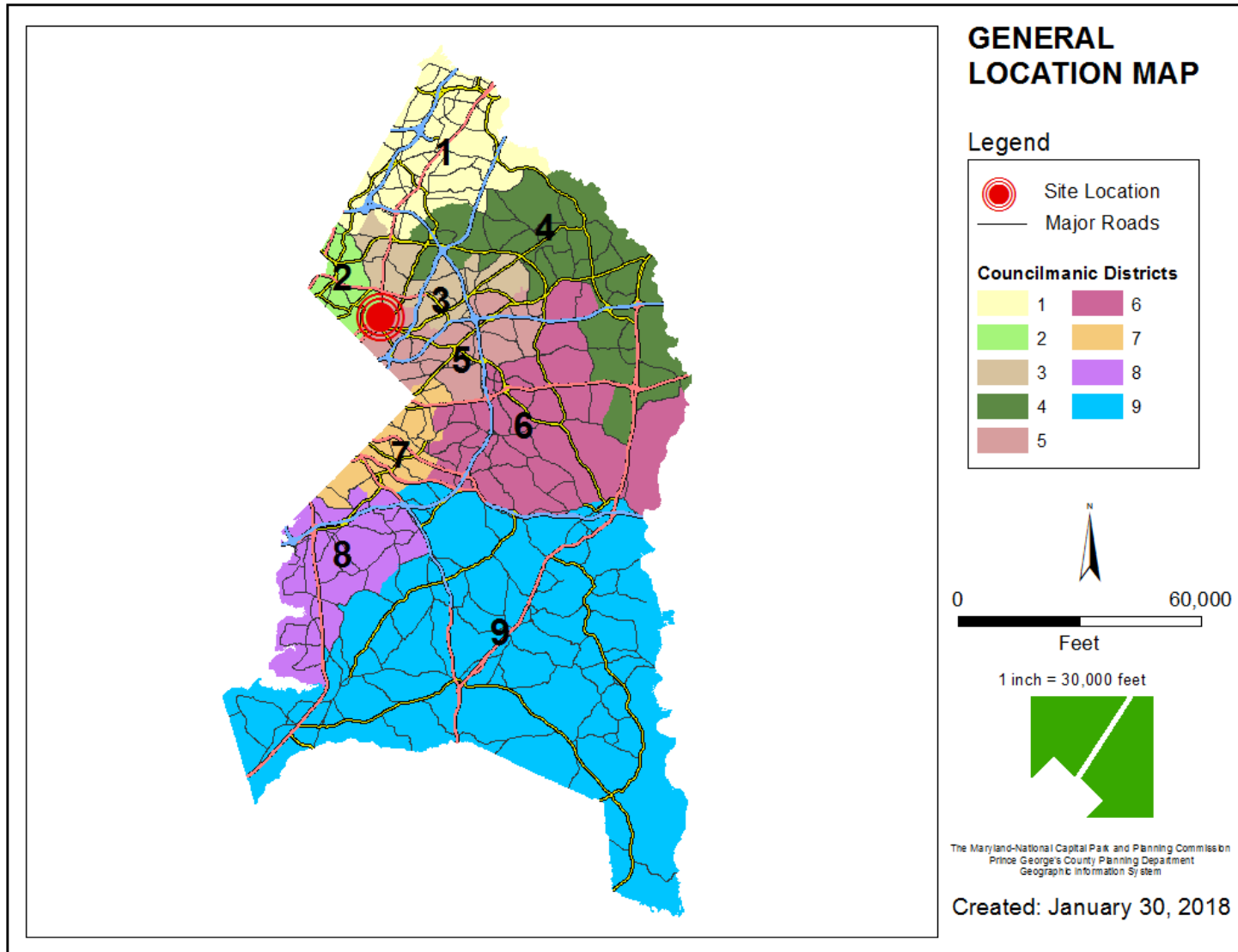
CASE: CP-17002

**CITY OF HYATTSVILLE  
DEPARTMENT OF PUBLIC WORKS  
OPERATIONS CENTER REDEVELOPMENT**

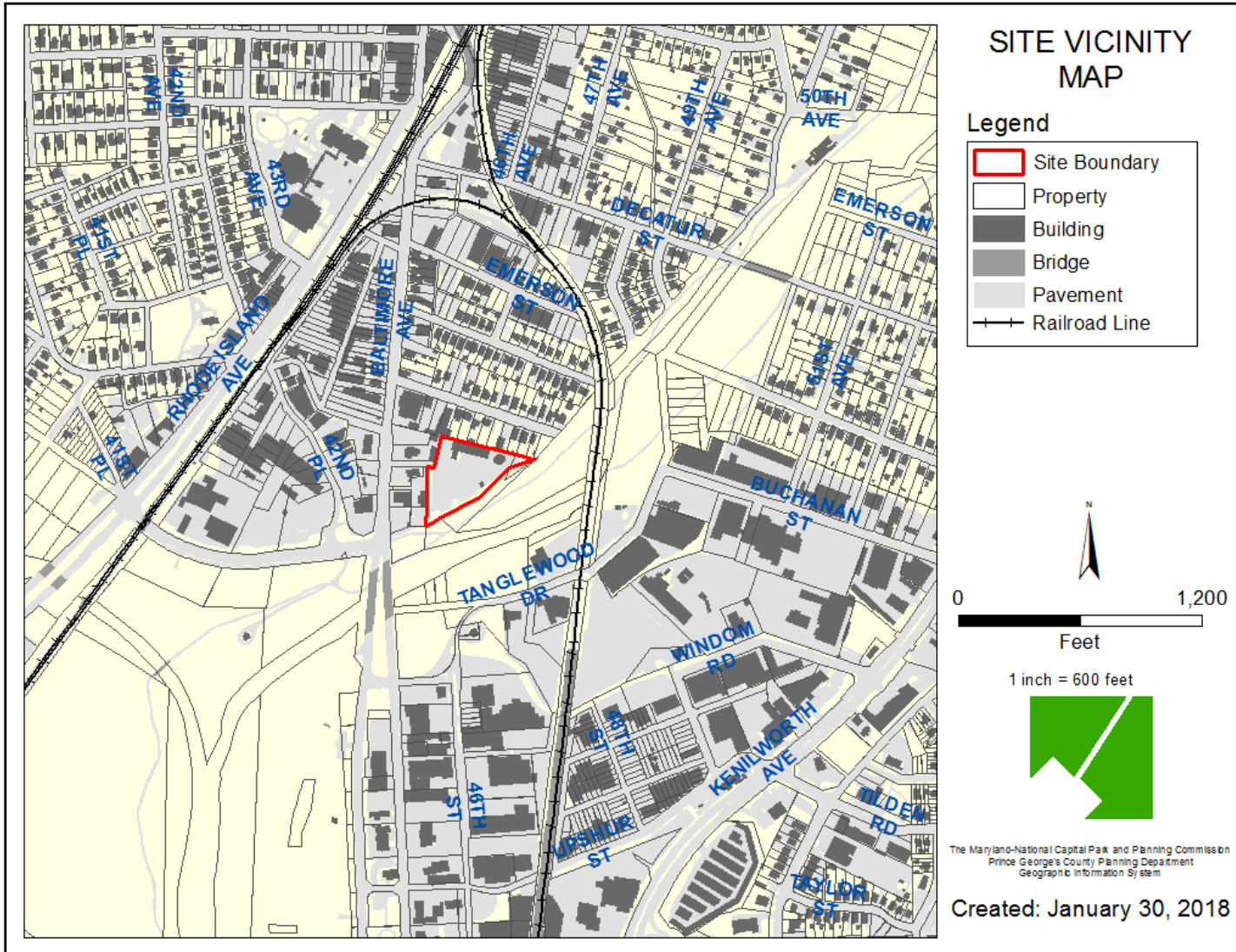
THE PRINCE GEORGE'S COUNTY PLANNING DEPARTMENT



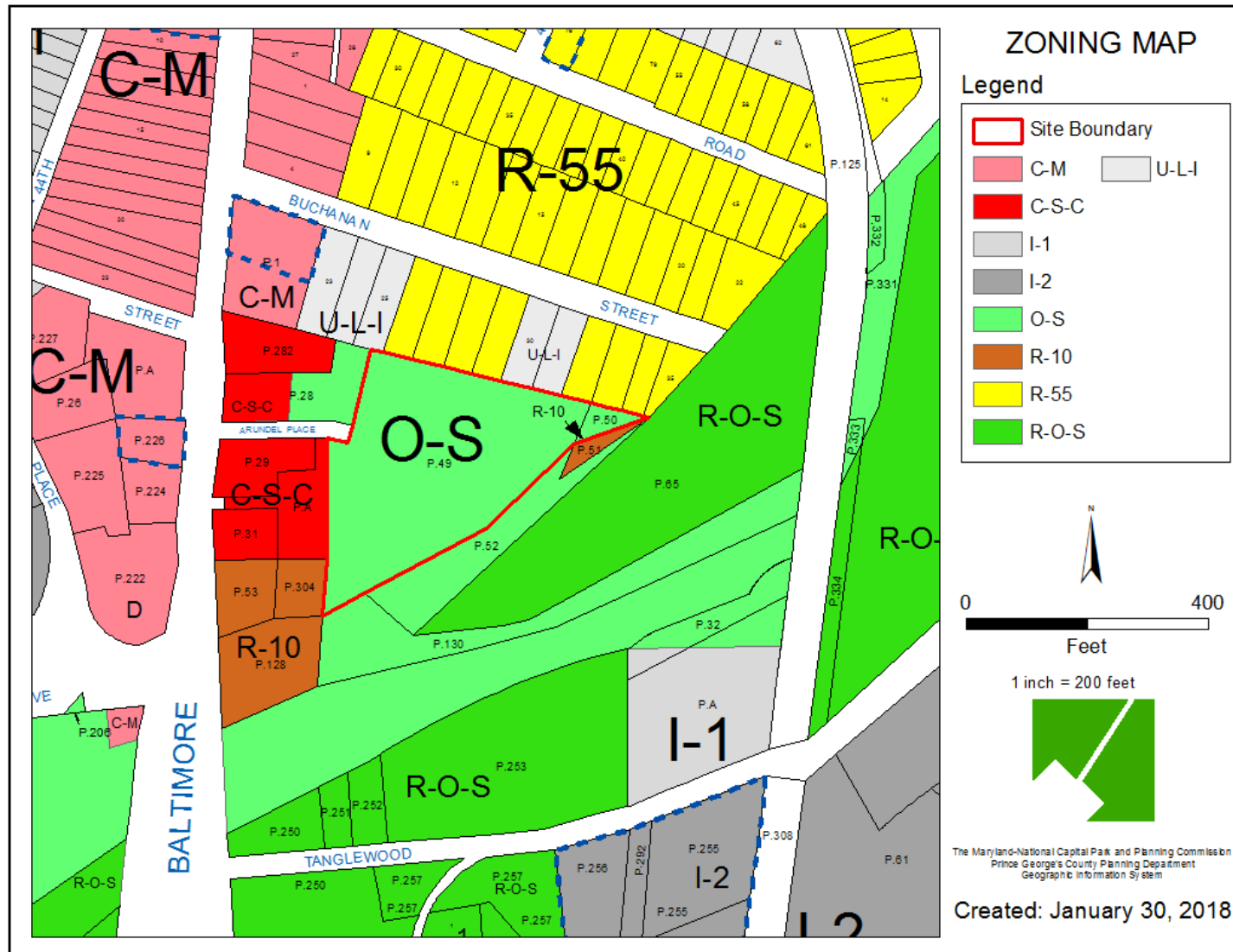
# GENERAL LOCATION MAP



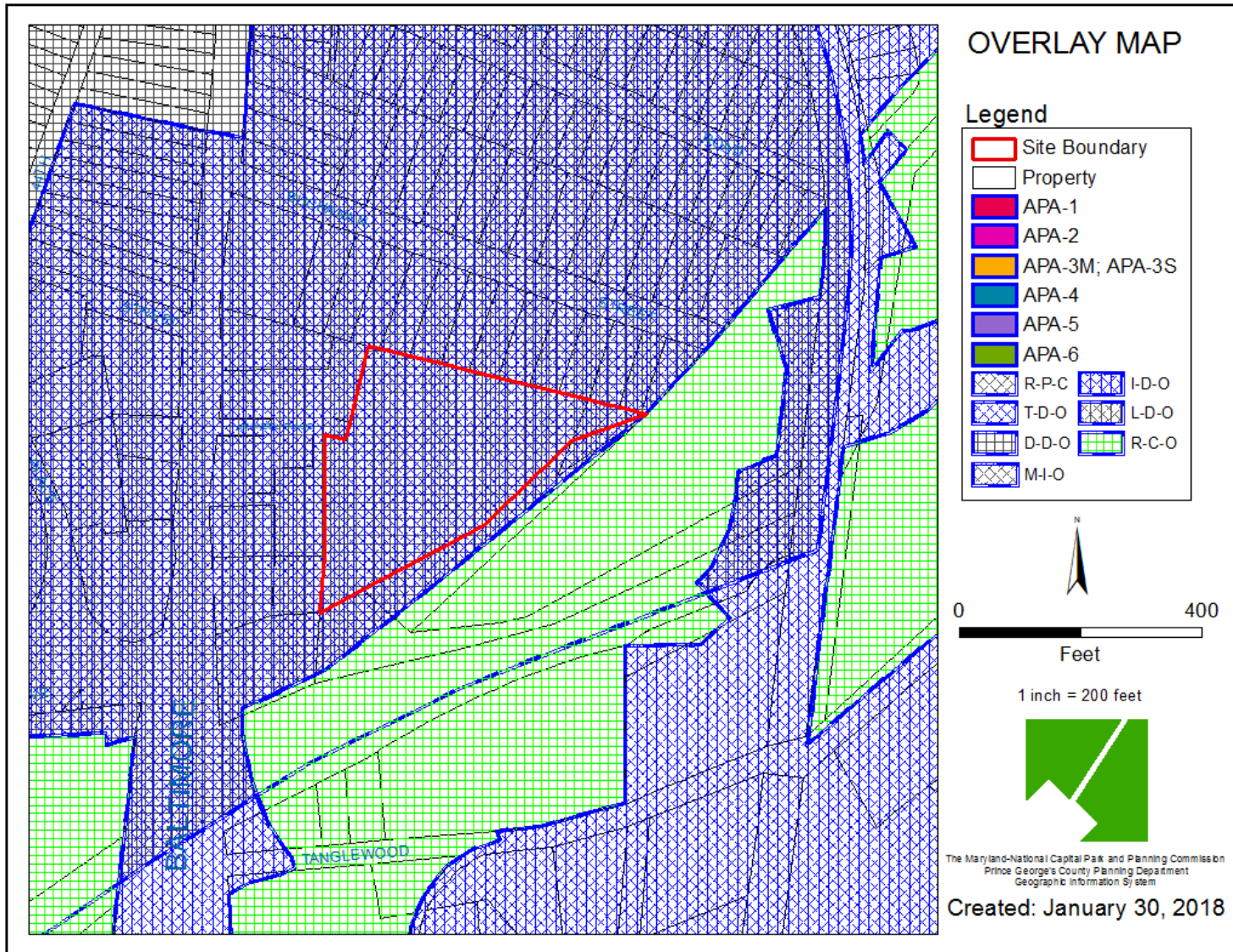
# SITE VICINITY



# ZONING MAP

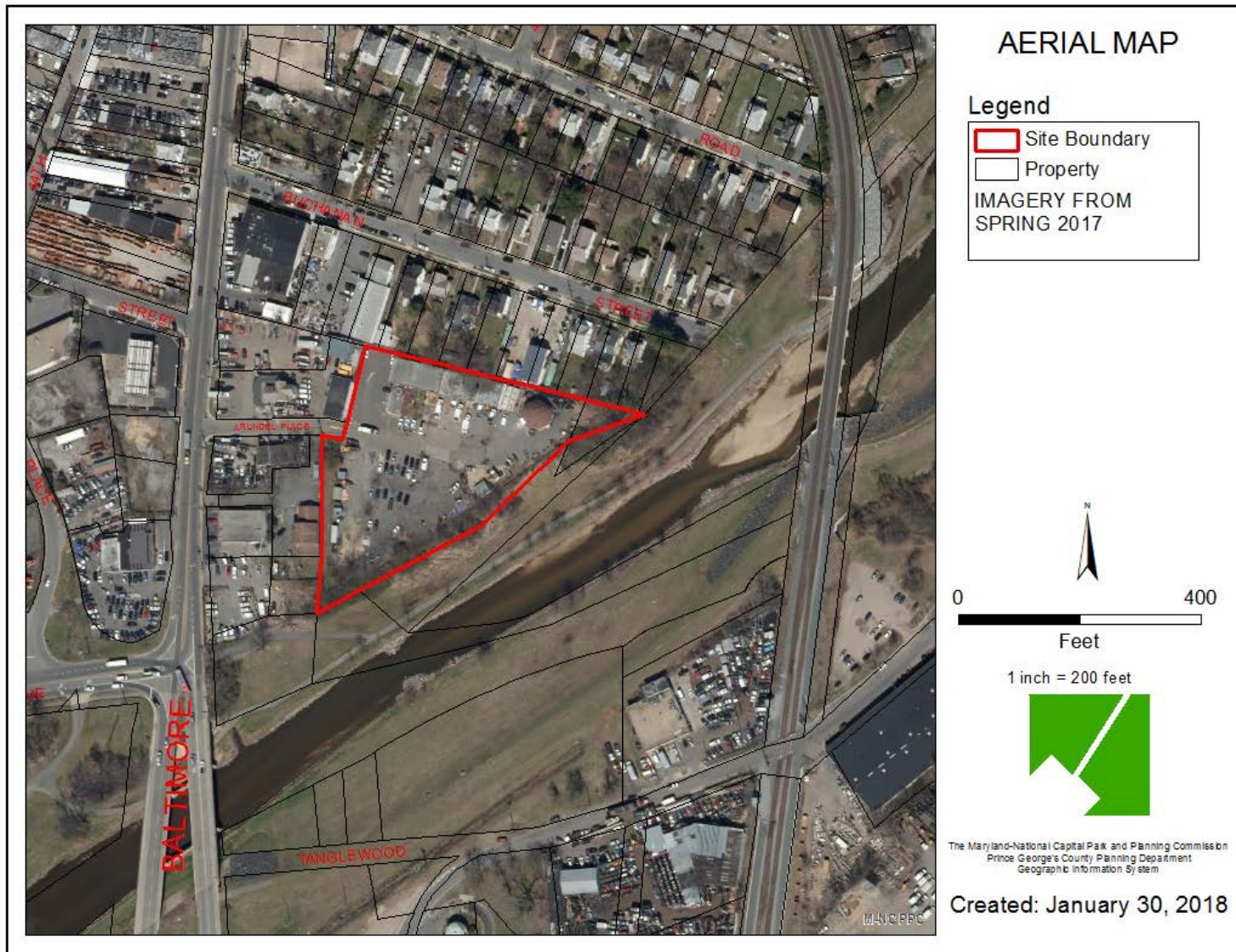


# OVERLAY MAP



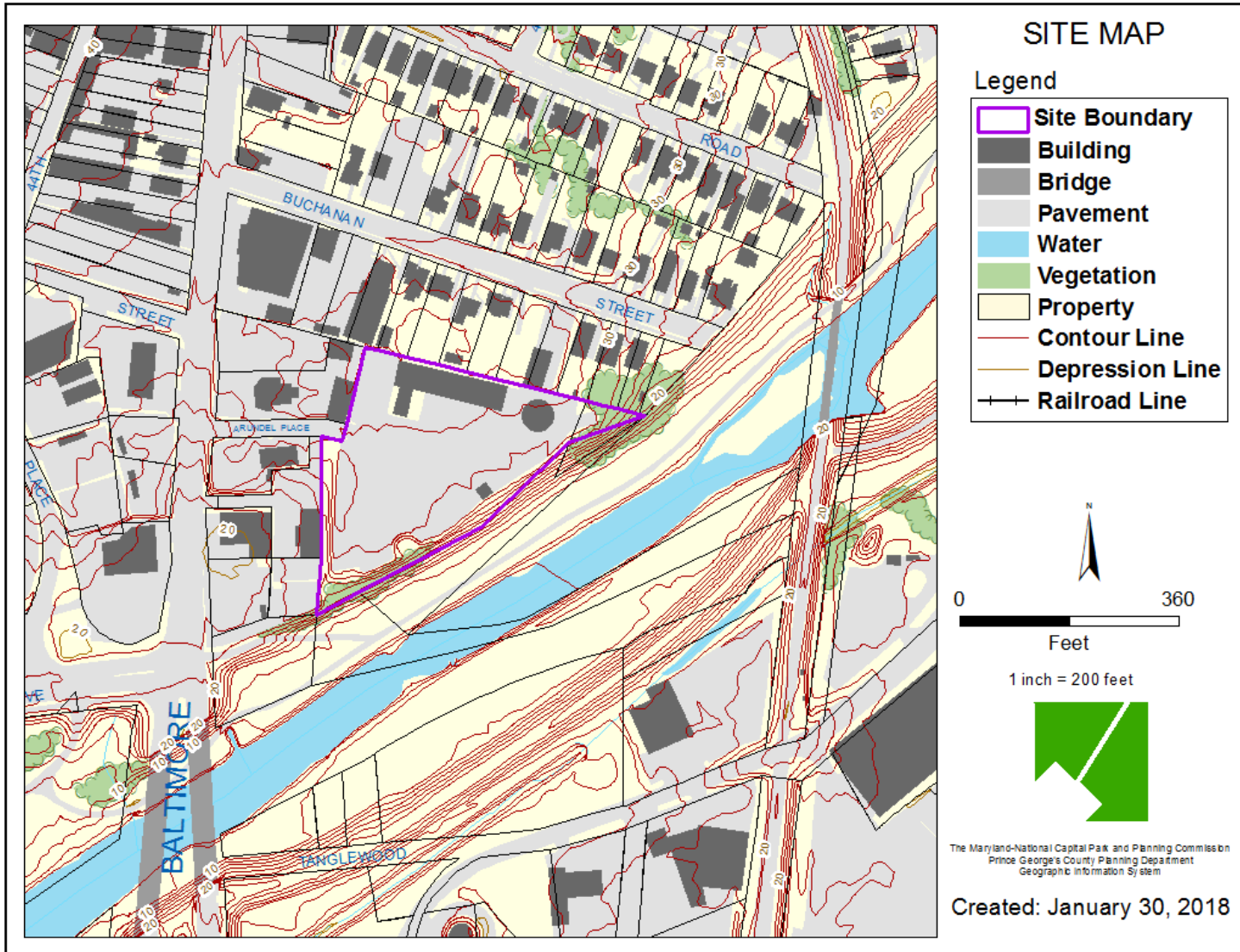


# AERIAL MAP



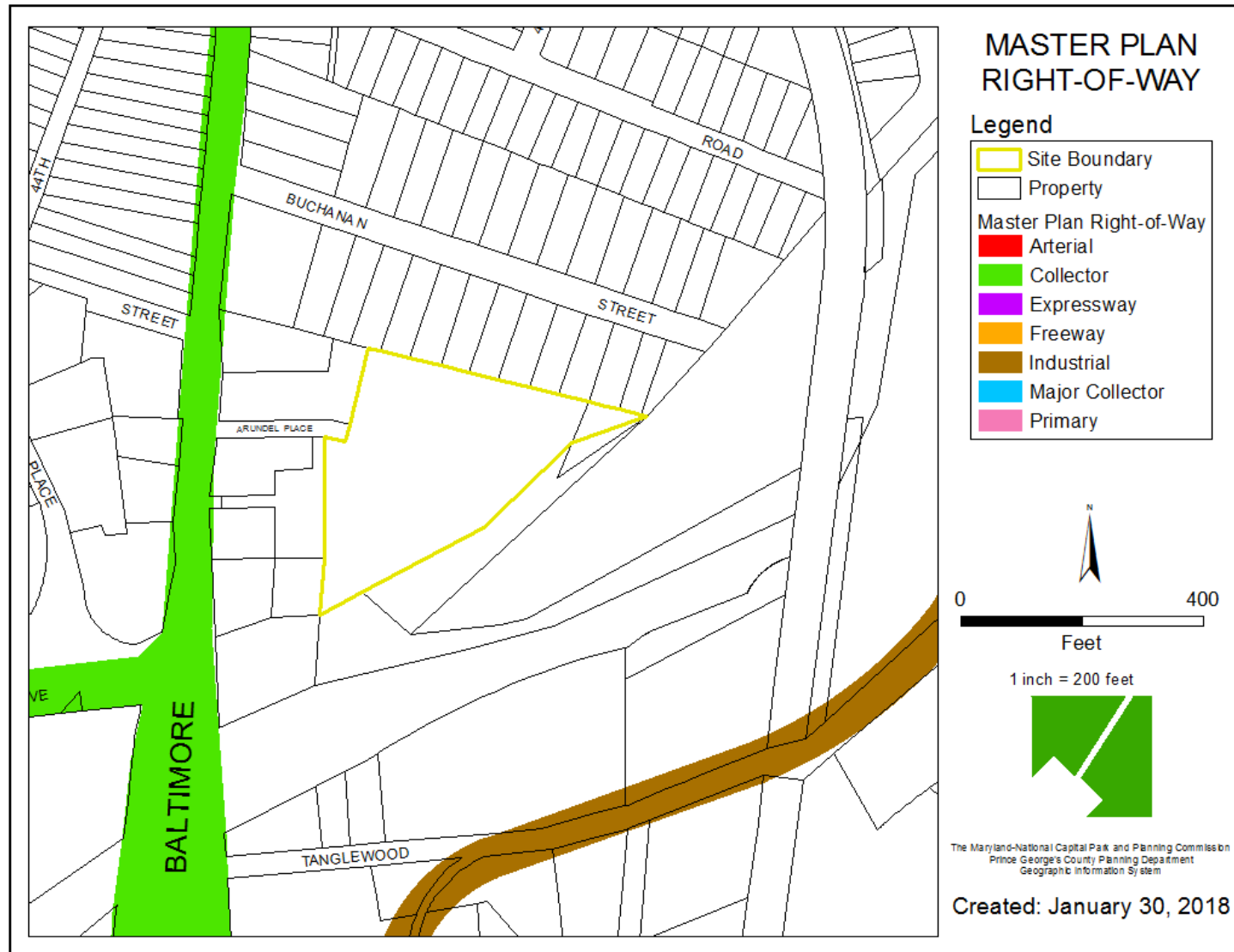
# BIRD'S-EYE VIEW WITH APPROXIMATE SITE BOUNDARY OUTLINED

# SITE MAP

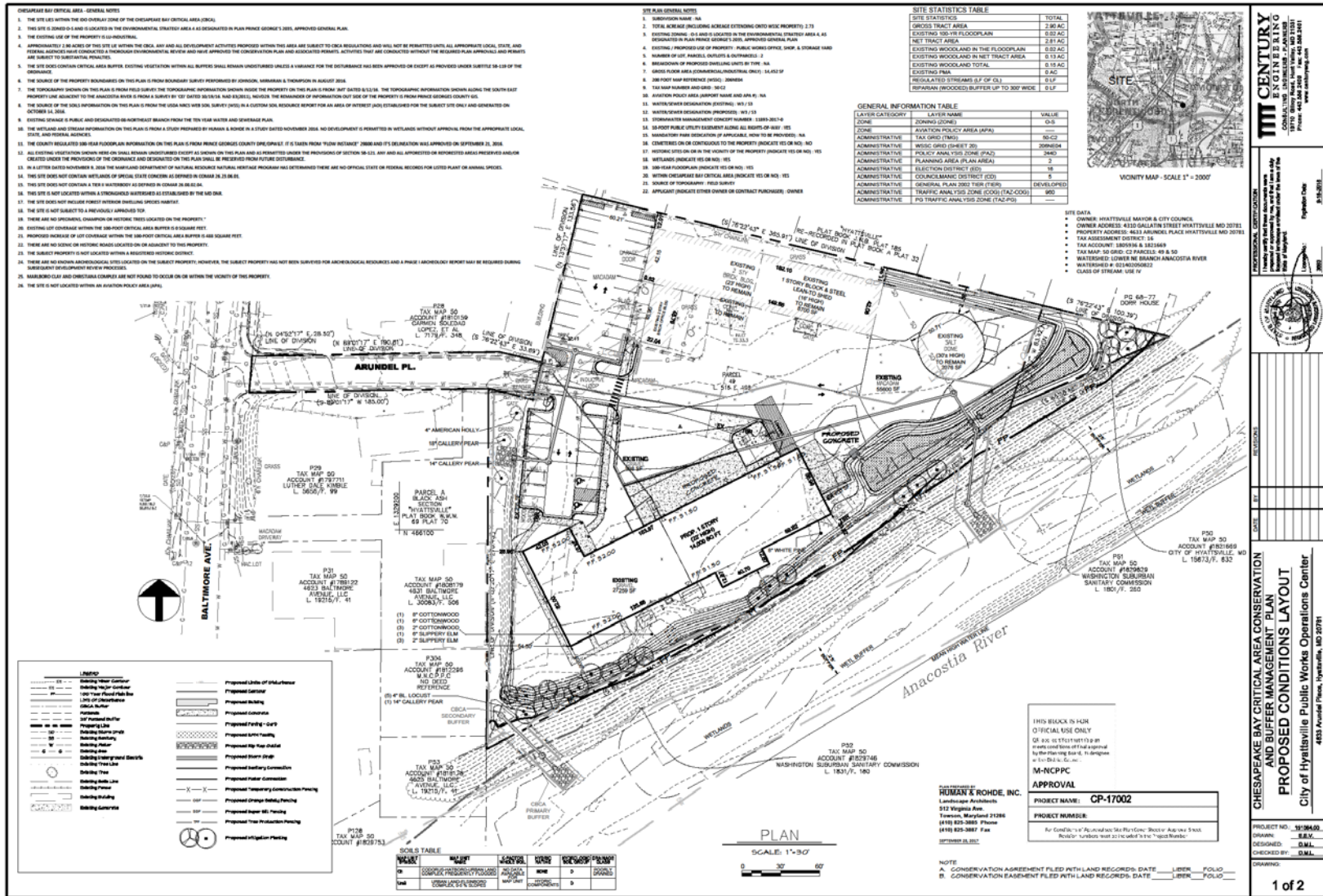




# MASTER PLAN RIGHT-OF-WAY MAP



# SITE PLAN





# ENTRANCE TO SITE





## SOUTHEAST CORNER OF SITE LOOKING TOWARD BUILDING





## SOUTHEAST CORNER OF SITE LOOKING TOWARD SALT DOME





# EXISTING PARKING AREA





# PARKING





# EXISTING SHED

