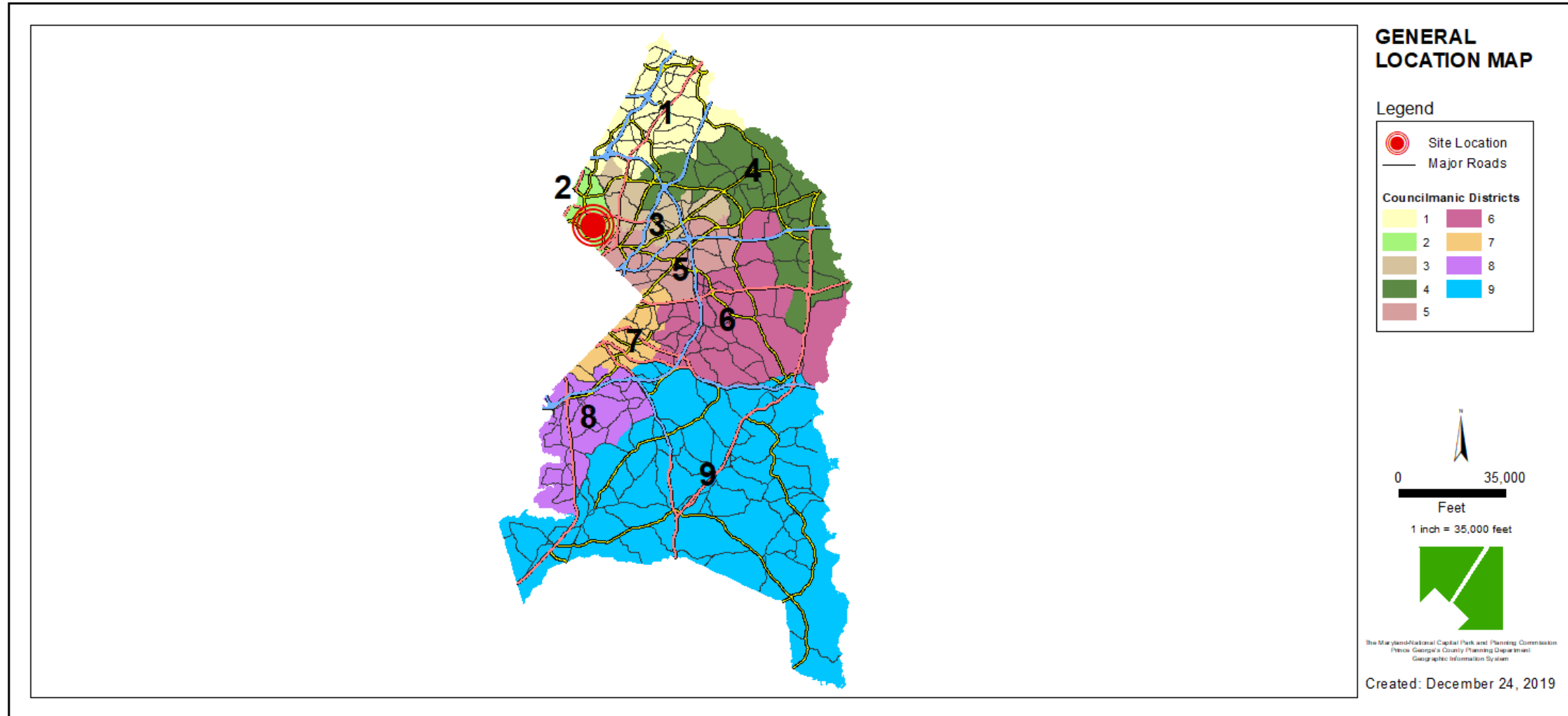


ITEM: 7 & 8

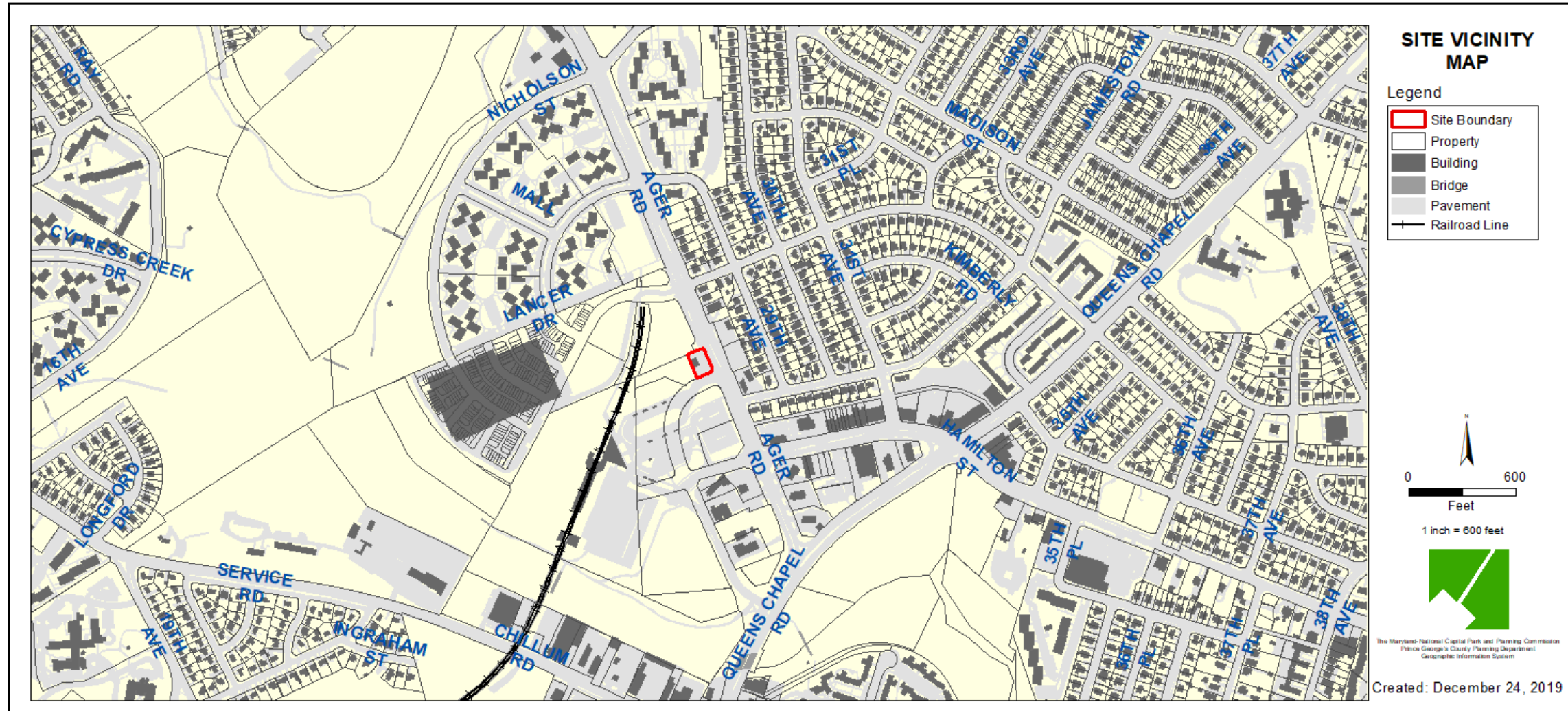
CASE: CSP-19009 & DSP-19053

5600 AGER ROAD

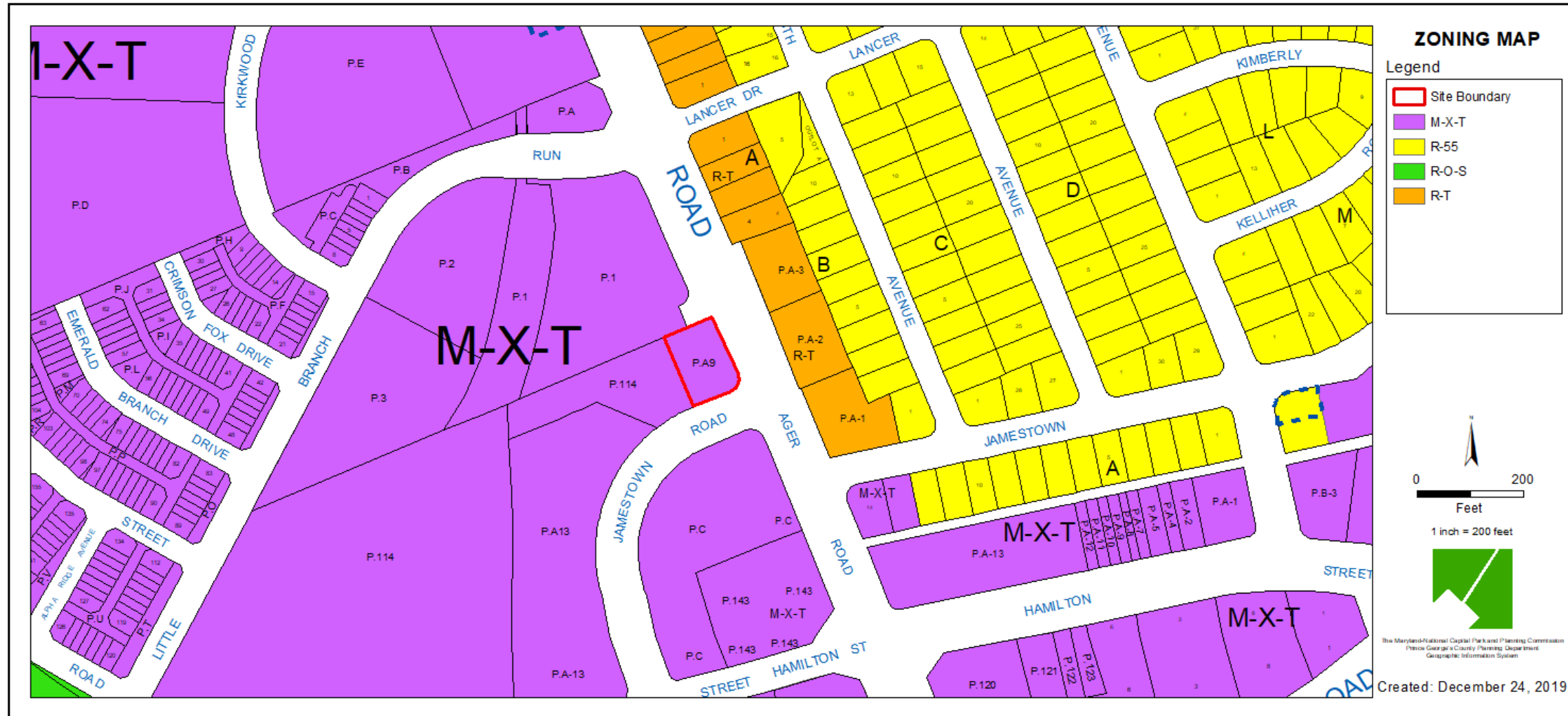
GENERAL LOCATION MAP



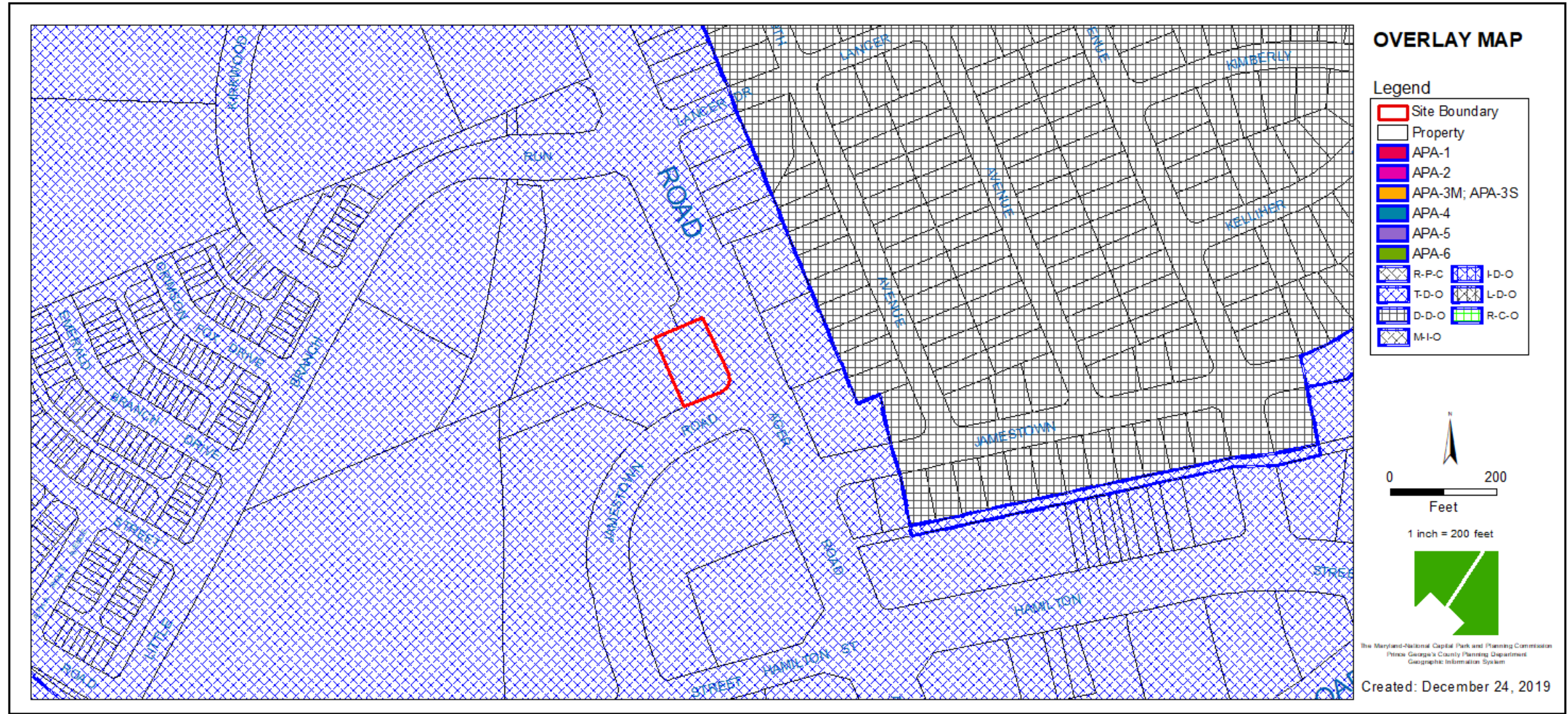
SITE VICINITY



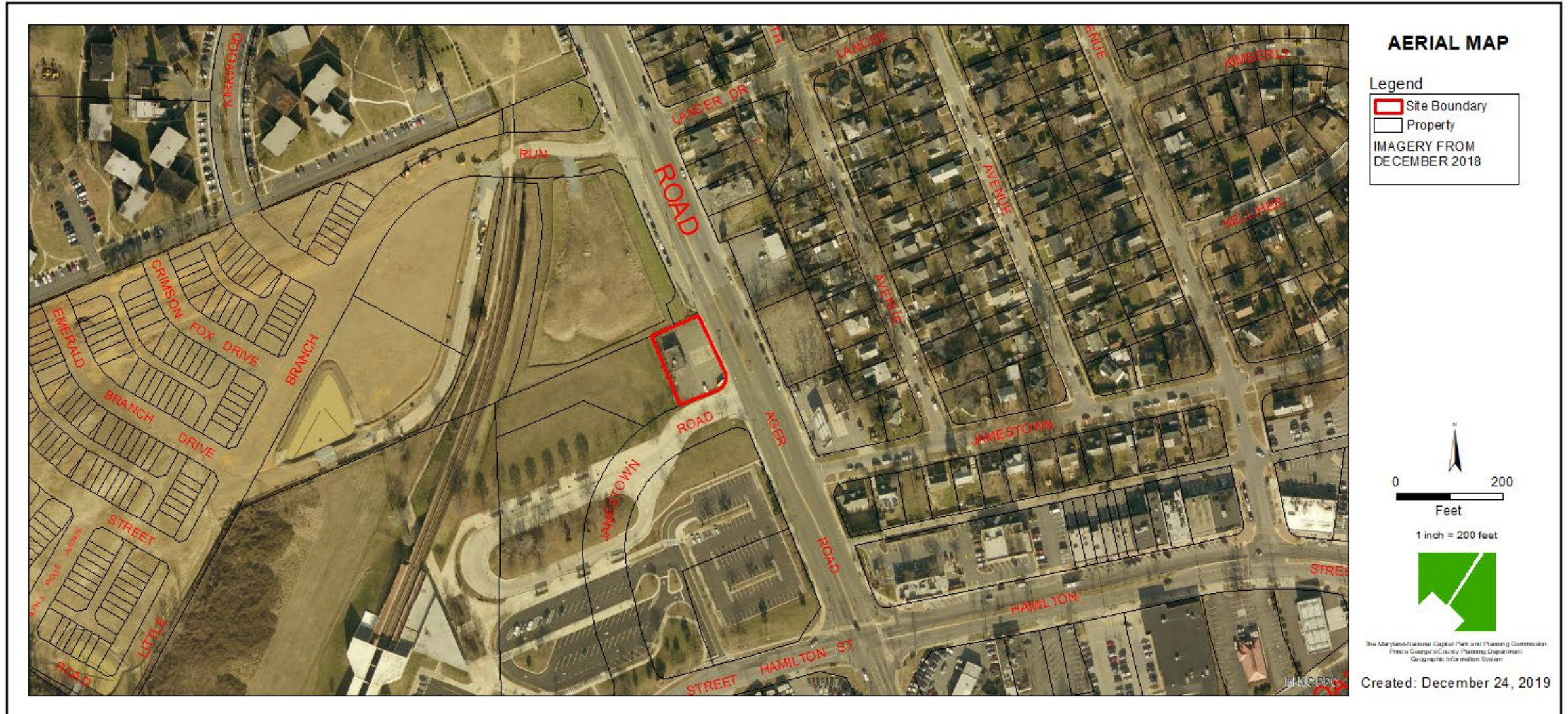
ZONING MAP



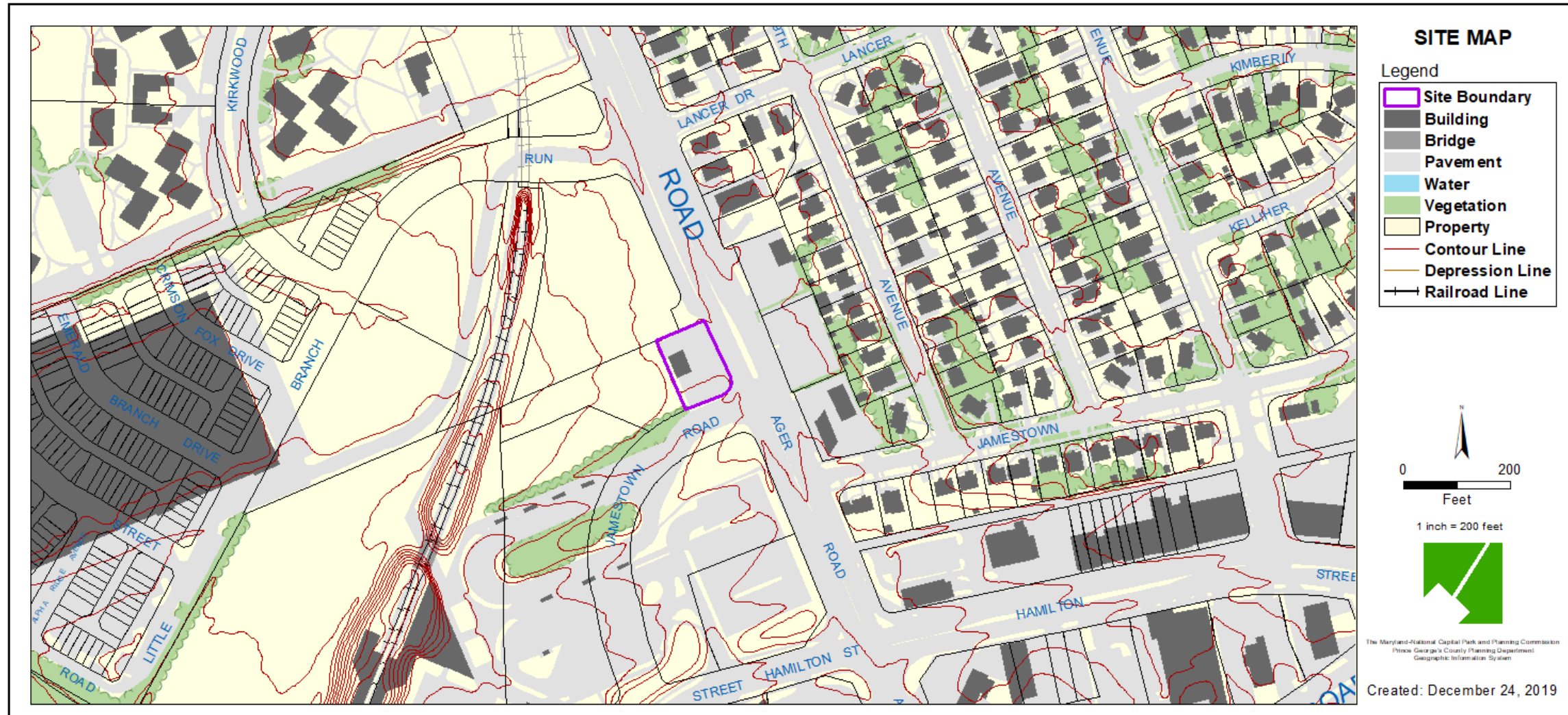
OVERLAY MAP



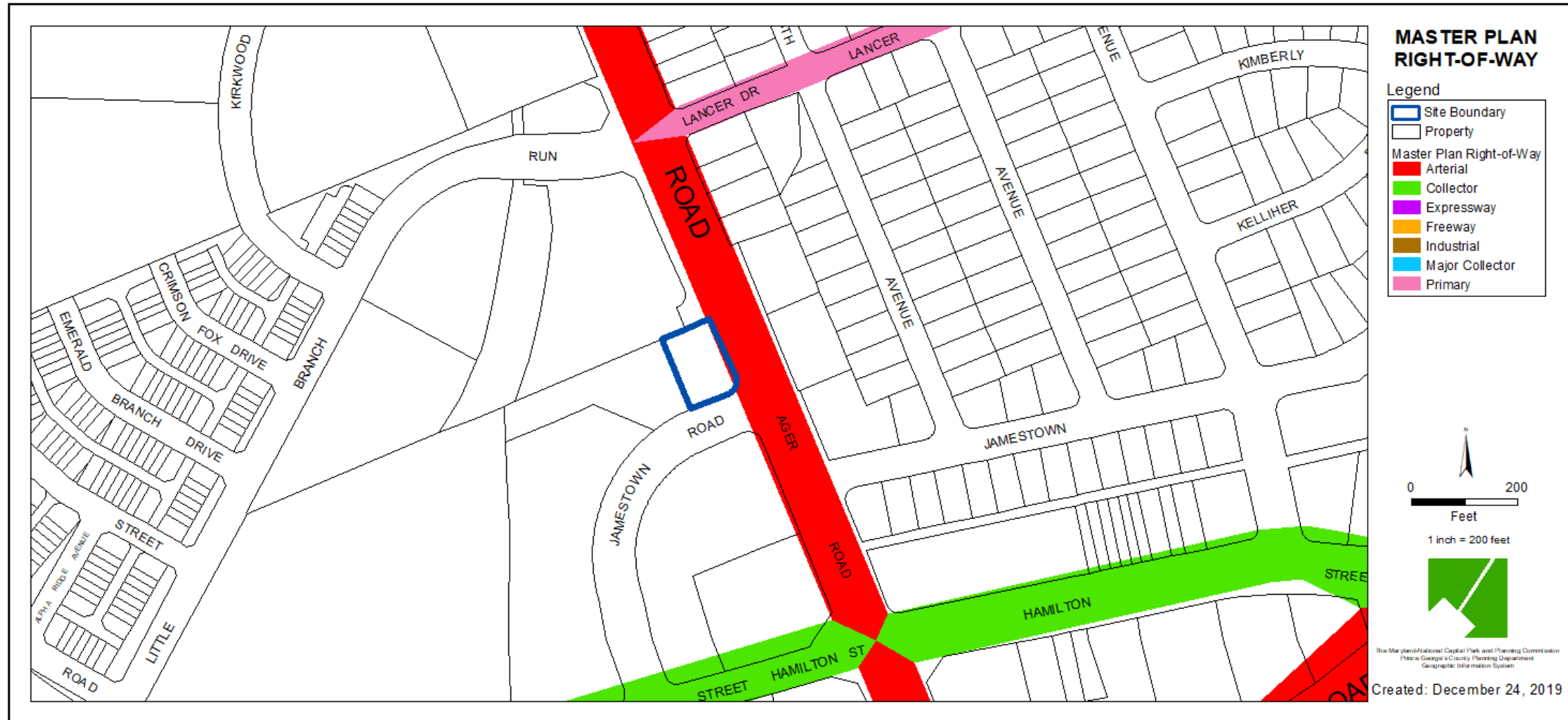
AERIAL MAP



SITE MAP

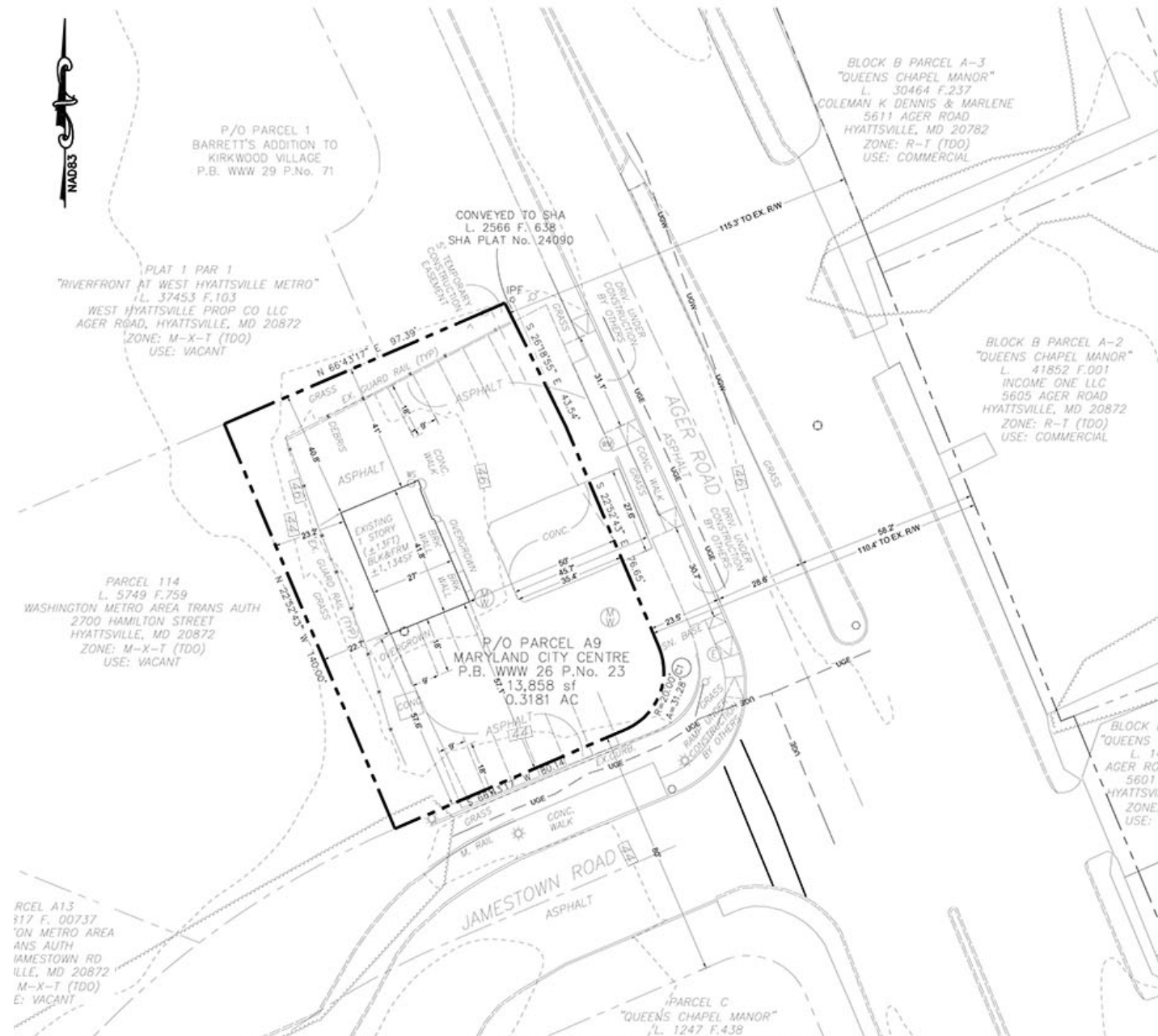


MASTER PLAN RIGHT-OF-WAY MAP



BIRD'S-EYE VIEW WITH APPROXIMATE SITE BOUNDARY OUTLINED





EXISTING AND PROPOSED COMMERCIAL USES

EXISTING ALLOWED USE:

Seasonal decorations display and sales as a temporary use, in accordance with Sections 27-260 and 27-261

PROPOSED ADDITIONAL USES:

1. Eating or Drinking Establishment (without drive-through service)
2. Food or Beverage Store
3. Food or Beverage Goods Preparation on the Premises of a Food and Beverage Store
4. Barber, Hair Salon or Beauty Shop
5. Hardware Store, Clothing or Dry Goods Retail
6. Banks, Savings and Loan Associations, or Other Savings and Lending Institution
7. Medical or Professional Office
8. Pet Grooming Shop
9. Non-Automobile Repair Shop