

ITEM: 9

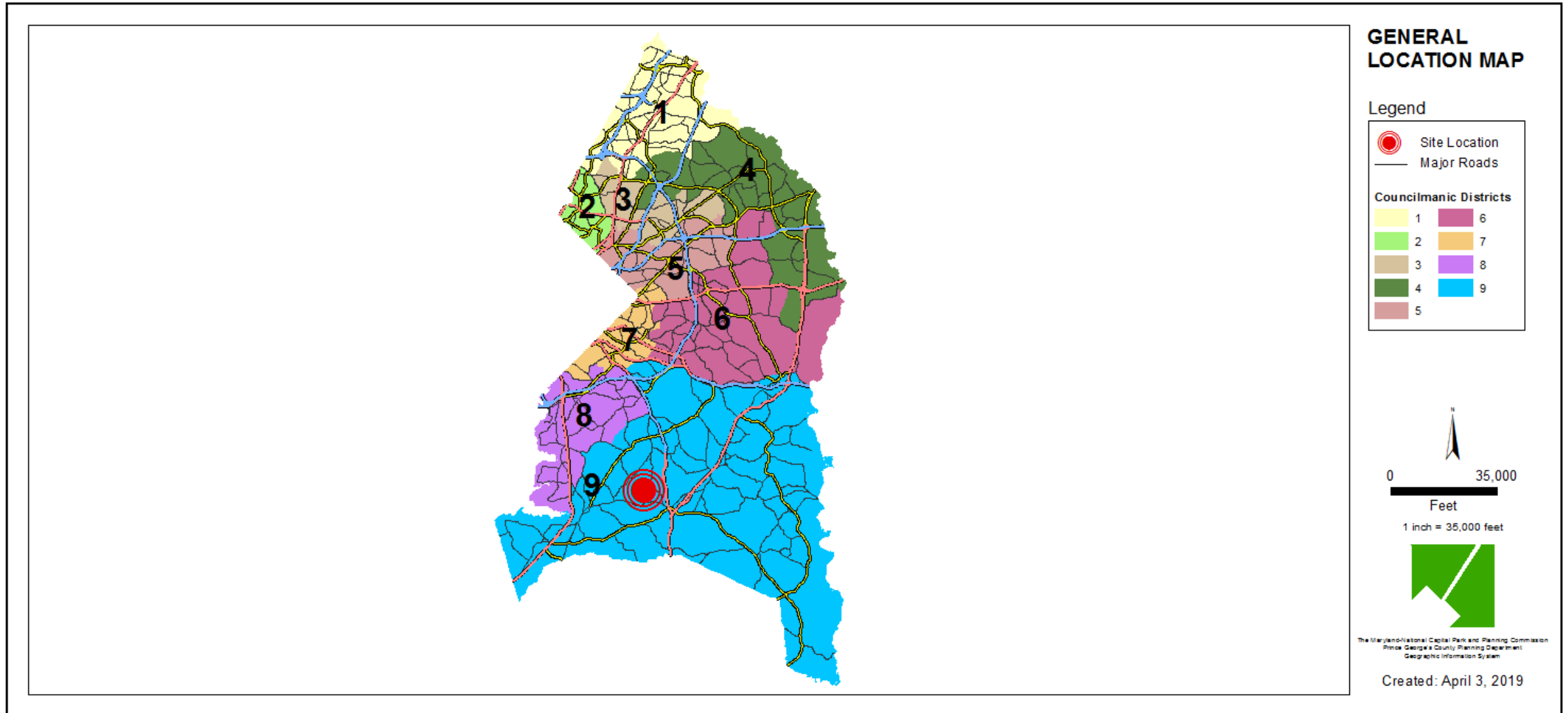
CASE: DSP-05036-03

## VILLAGES OF SAVANNAH

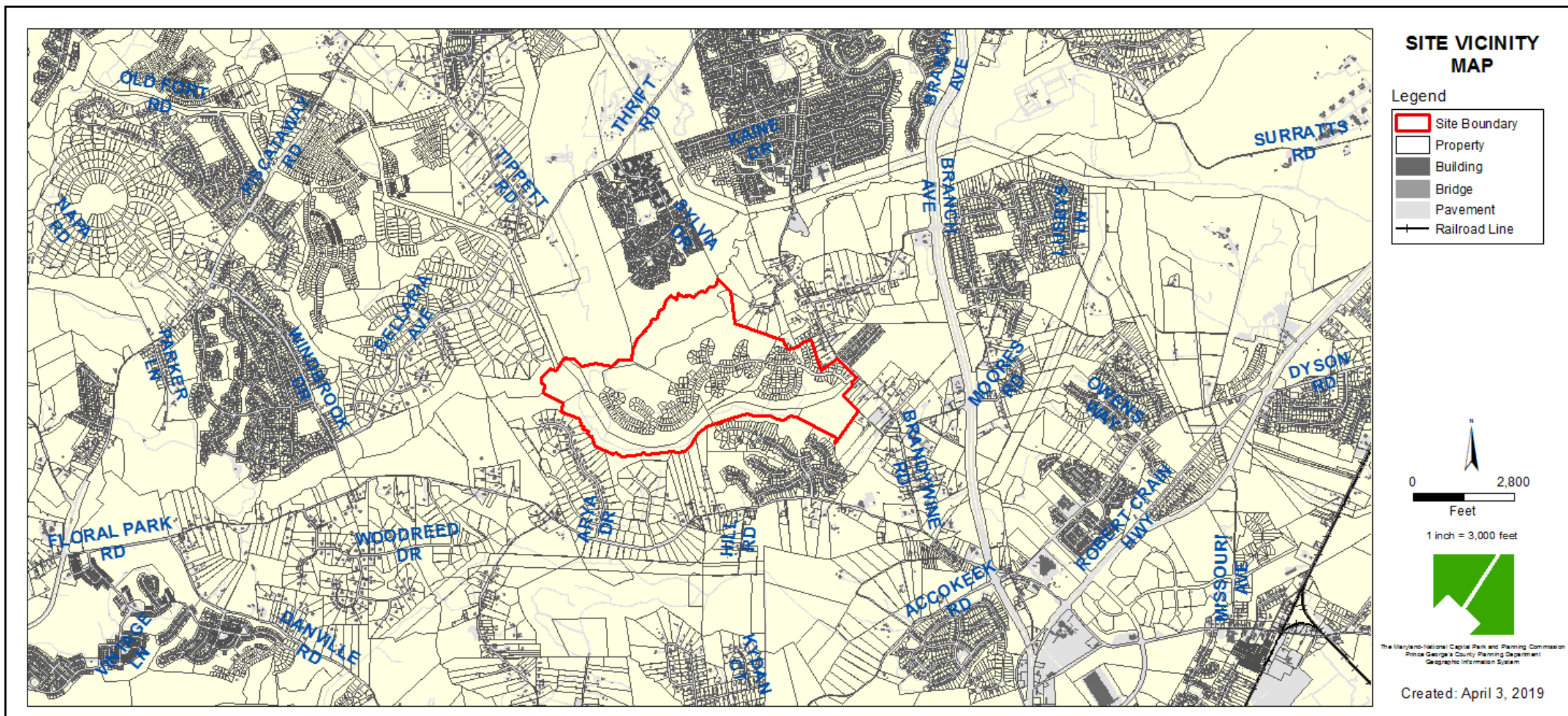
THE PRINCE GEORGE'S COUNTY PLANNING DEPARTMENT



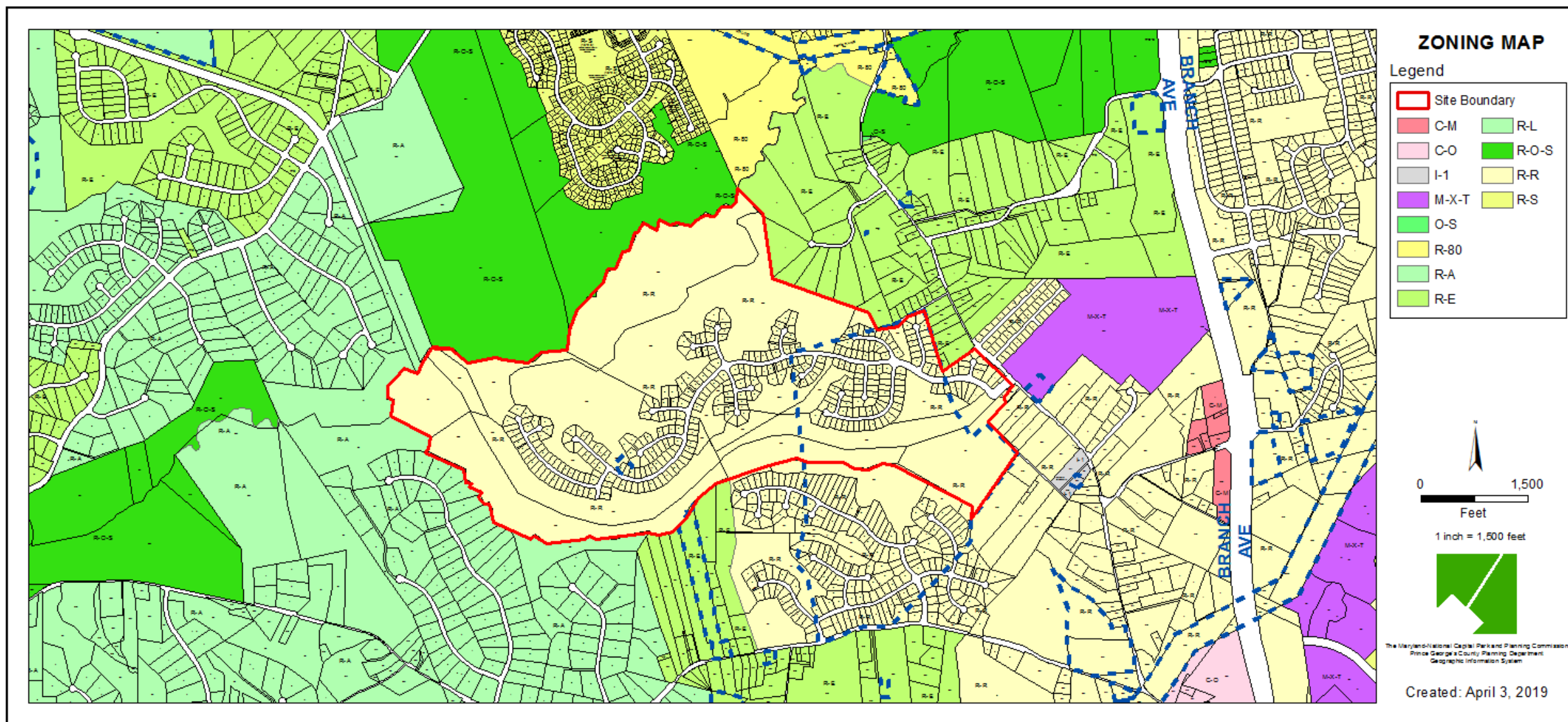
# GENERAL LOCATION MAP



# SITE VICINITY



# ZONING MAP



# AERIAL MAP

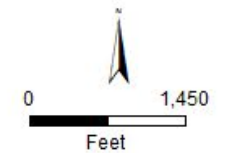


## AERIAL MAP

### Legend

- Site Boundary
- Property

IMAGERY FROM  
DECEMBER 2018



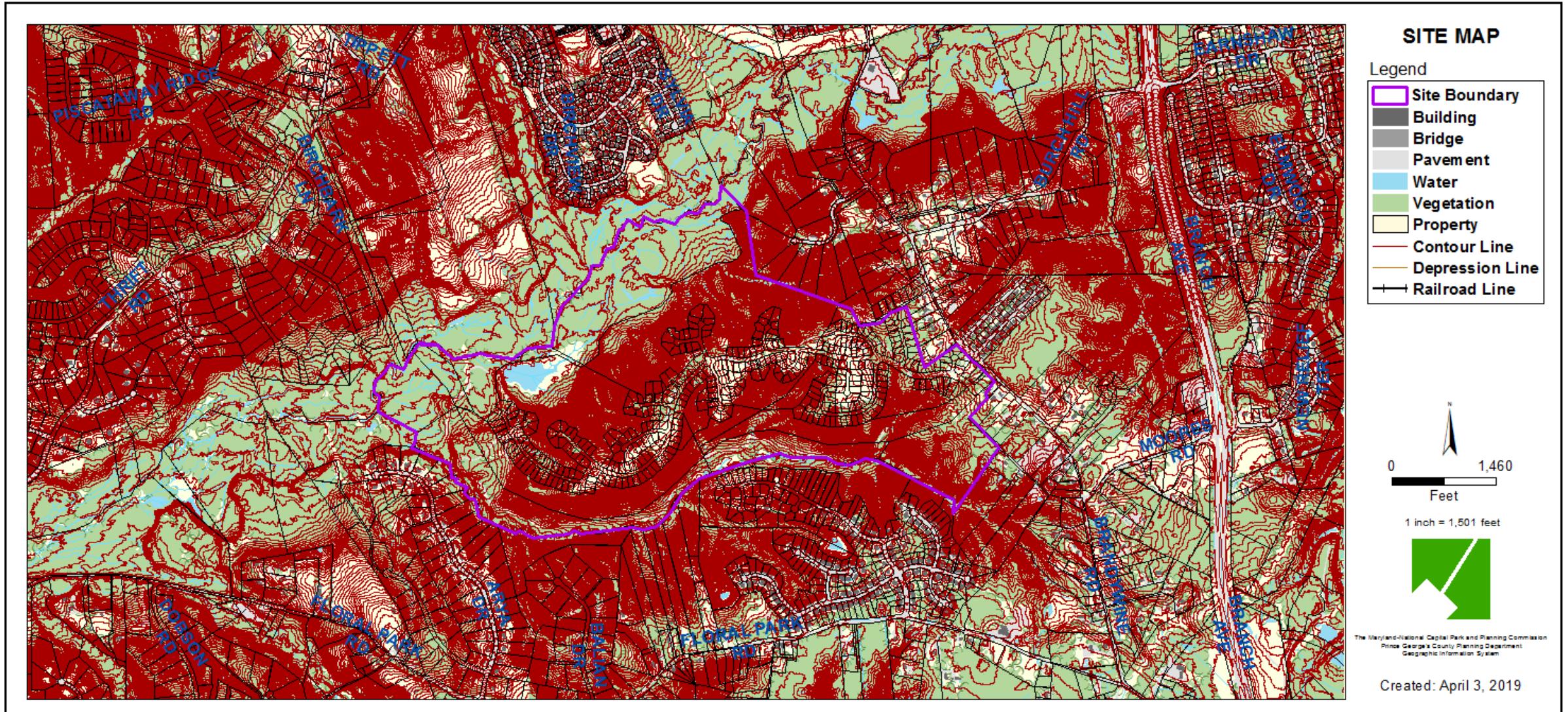
1 inch = 1,500 feet



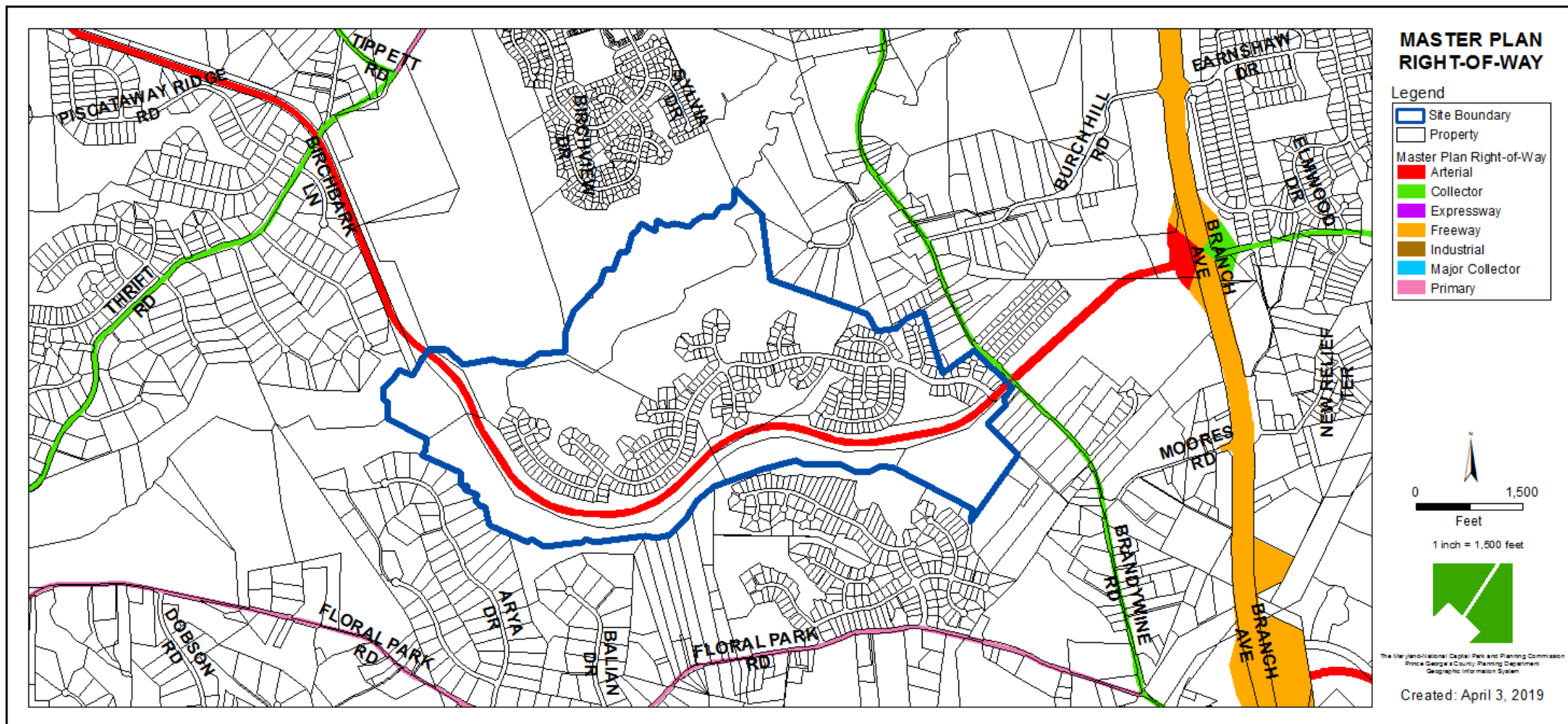
The Maryland-National Capital Park and Planning Commission  
Prince George's County Planning Department  
Geographic Information System

Created: April 3, 2019

# SITE MAP



# MASTER PLAN RIGHT-OF-WAY MAP



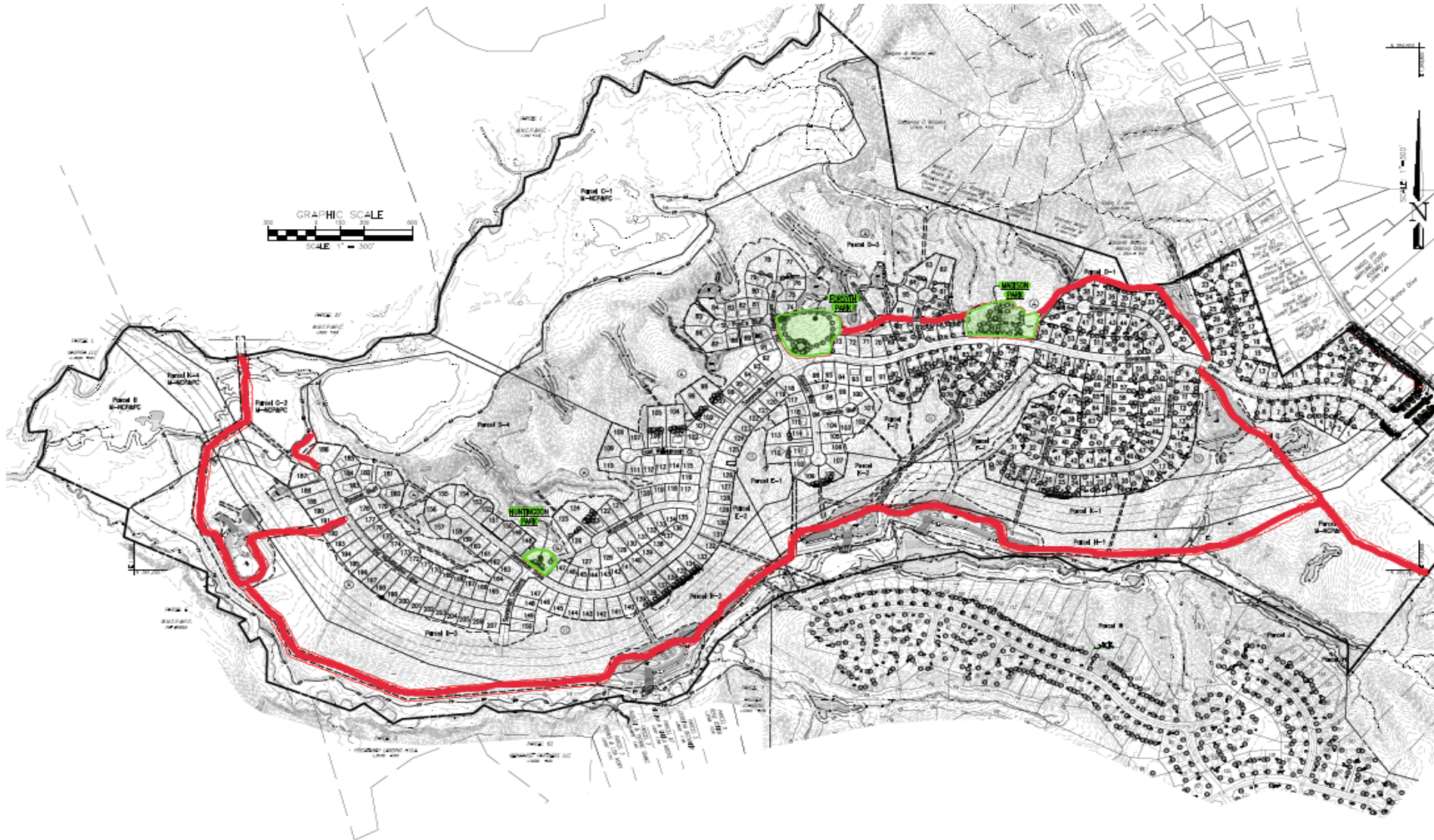
# BIRD'S-EYE VIEW WITH APPROXIMATE SITE BOUNDARY OUTLINED



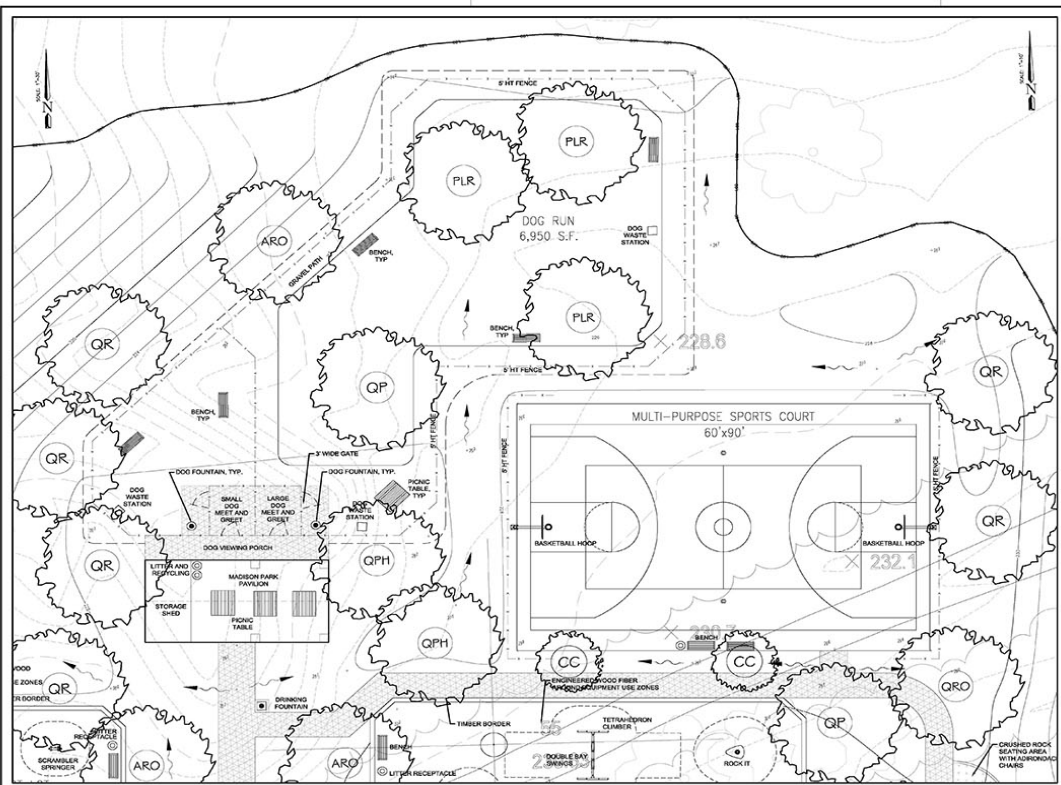
# OVERALL SITE PLAN



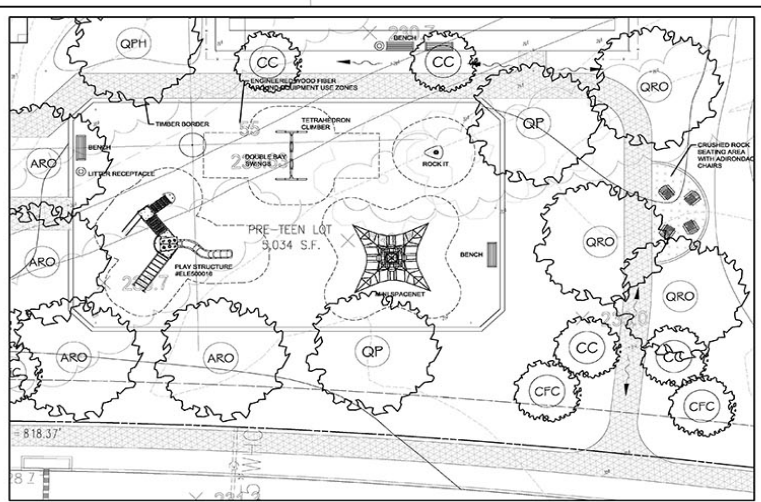
# SITE PLAN FEATURE HIGHLIGHT



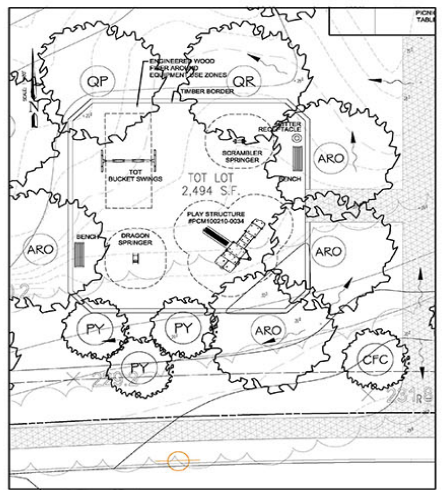
# MADISON PARK



PAVILION AND DOG PARK - MADISON PARK



PRE-TEEN LOT - MADISON PARK



TOT LOT - MADISON PARK

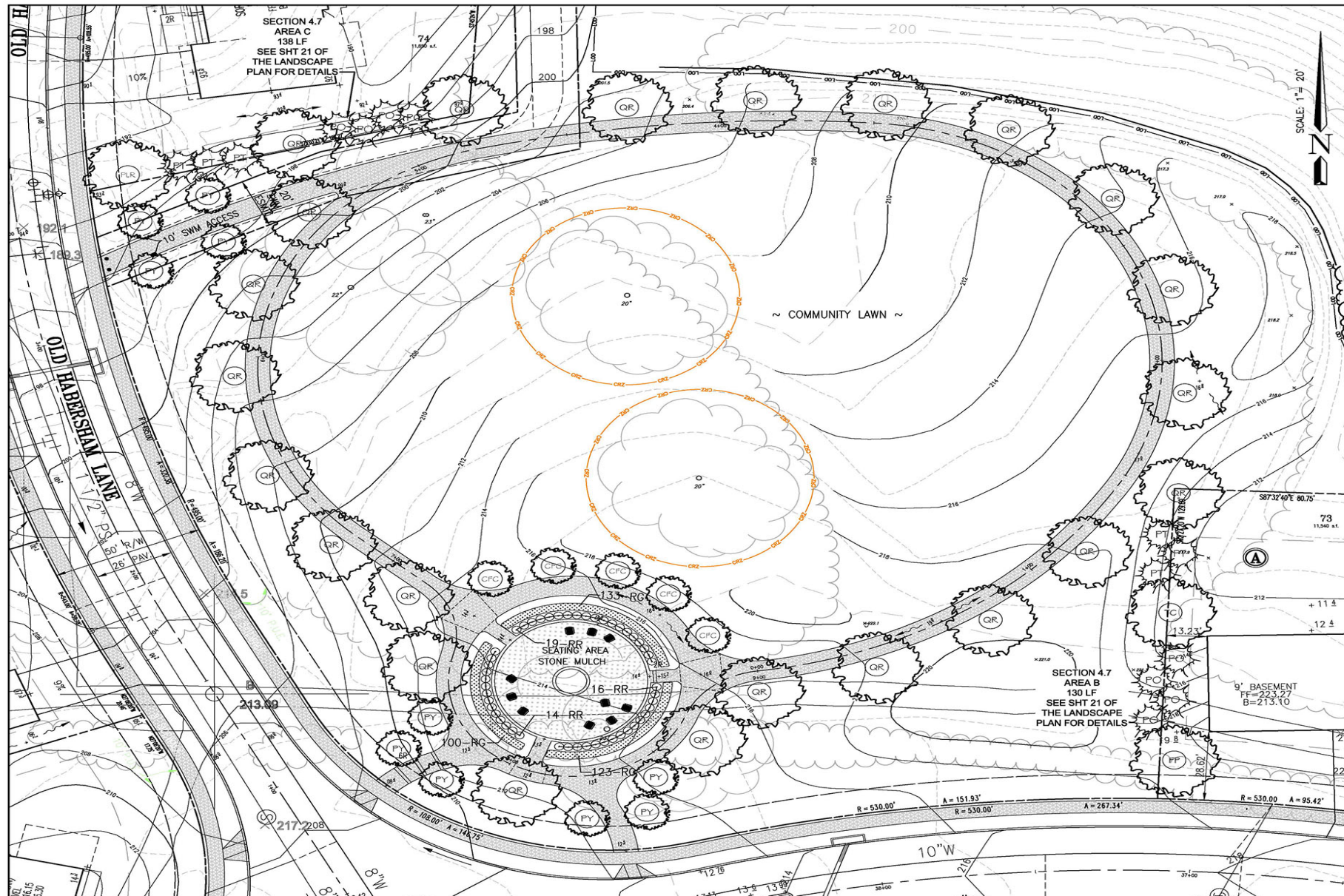
LANDSCAPE PLAN  
VILLAGES OF SAVANNAH  
(FORMERLY SADDLE CREEK)  
BRANDYWINE (11th) ELECTION DISTRICT  
PRINCE GEORGE'S COUNTY, MARYLAND

**CPJ** Charles P. Johnson & Associates, Inc.  
Civil and Environmental Engineers • Planners • Landscape Architects • Surveyors  
11000 Lee Road, Suite 300 Silver Spring, MD 20910 301-591-1000 Fax: 301-591-1001  
www.cpj.com 10000 Lee Road, Suite 300 Silver Spring, MD 20910 301-591-1000 Fax: 301-591-1001

CLIENT	PROJECT	DATE
MR. & MRS. JAMES H. HARRIS, JR. 11000 Lee Road, Suite 300 Silver Spring, MD 20910	VILLAGES OF SAVANNAH LANDSCAPE ARCHITECTURE	03/13/2019

DATE	BY	REVISION
03/13/2019	CPJ	3B
03/13/2019	CPJ	36

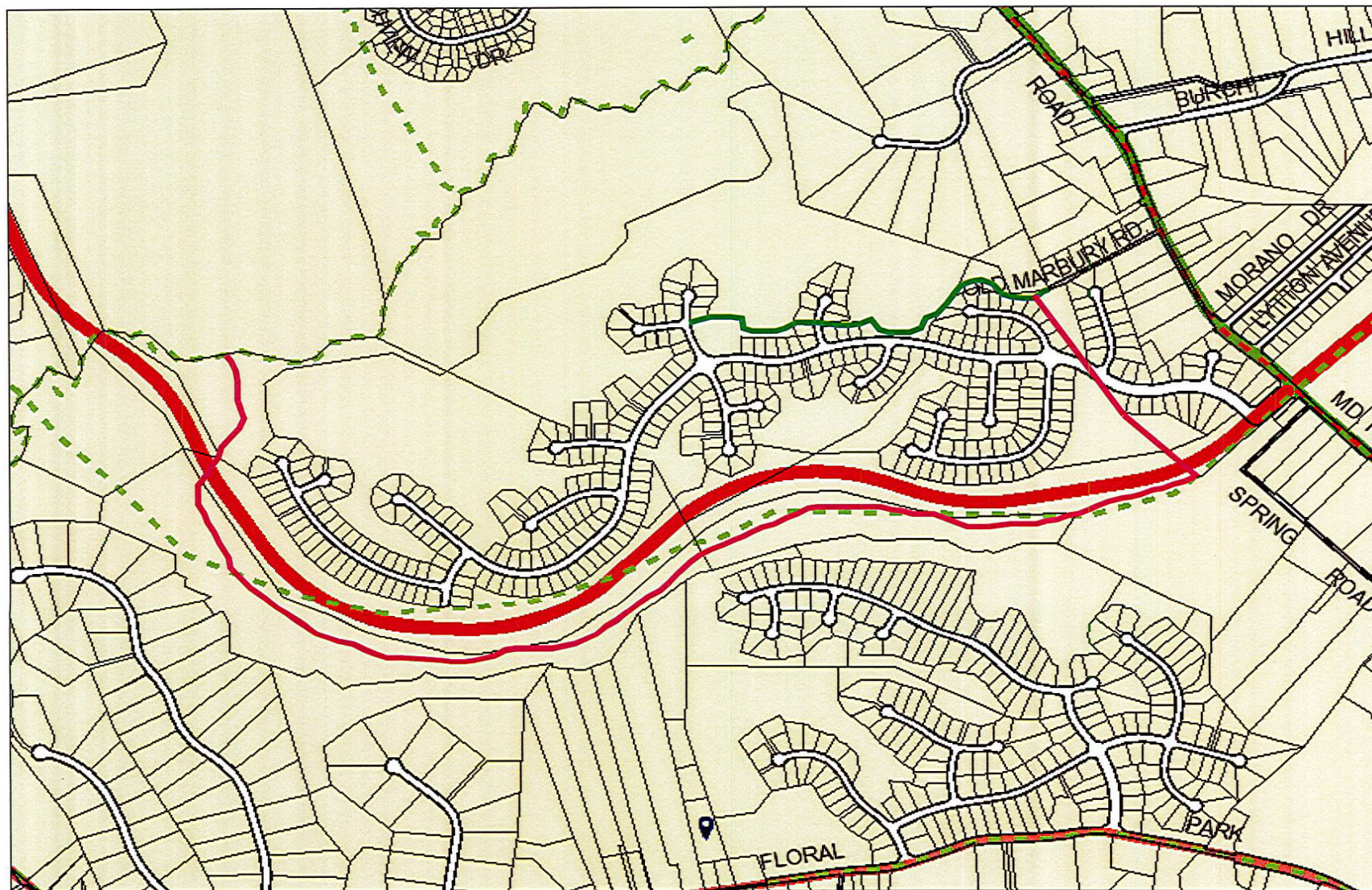
DATE: 03/13/2019  
BY: CPJ  
REVISION: 3B, 36



# HUNTINGDON PARK



# APPLICANT EXHIBIT #1 (JUNE 7, 2018 RECONSIDERATION REQUEST HEARING)



Condition 23-Trail segment to be removed

Removed from master plan

Condition 24-Trail segment to be removed

Removed from master plan

A-65 Master Plan Arterial to remain with sidepath