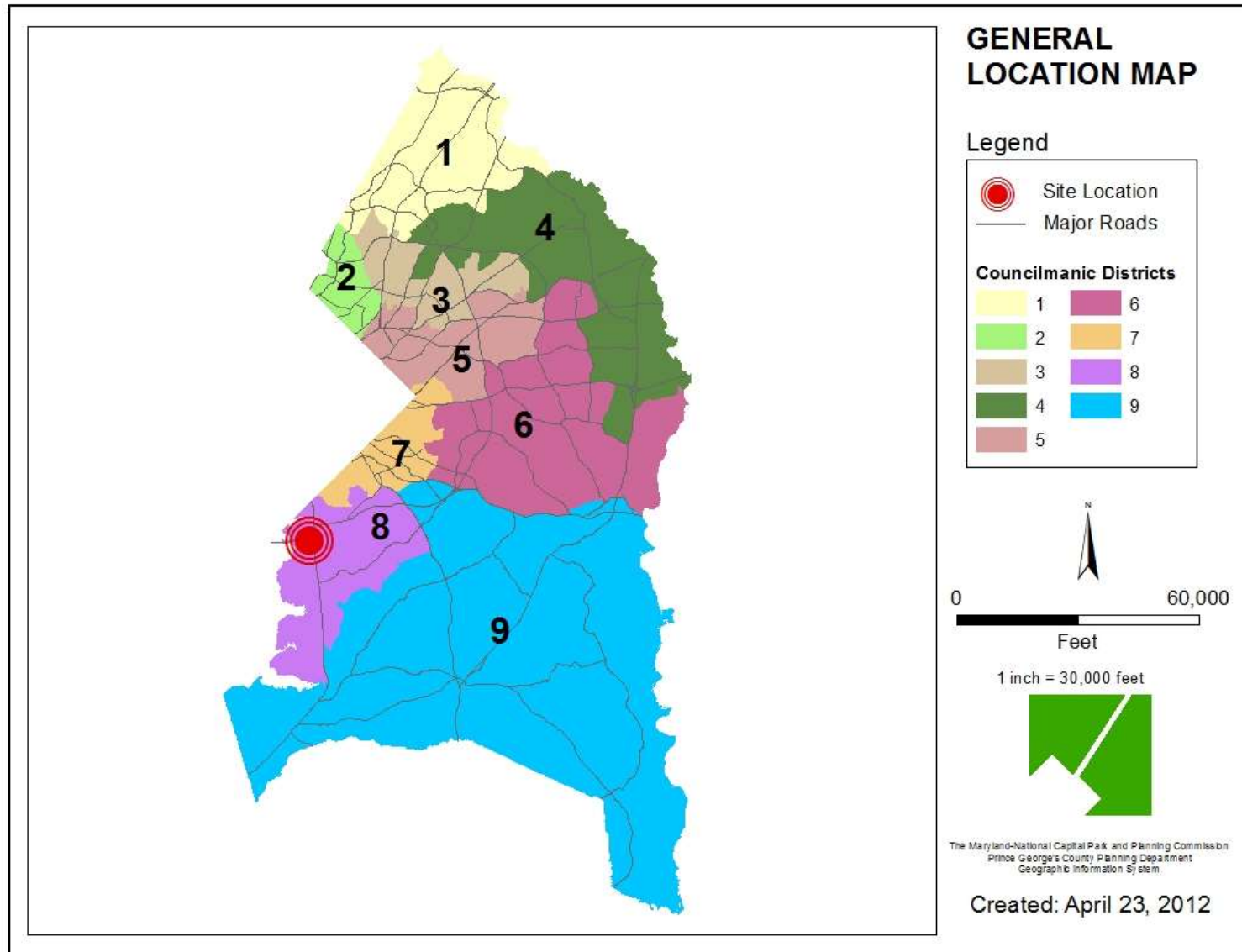


ITEM: 20

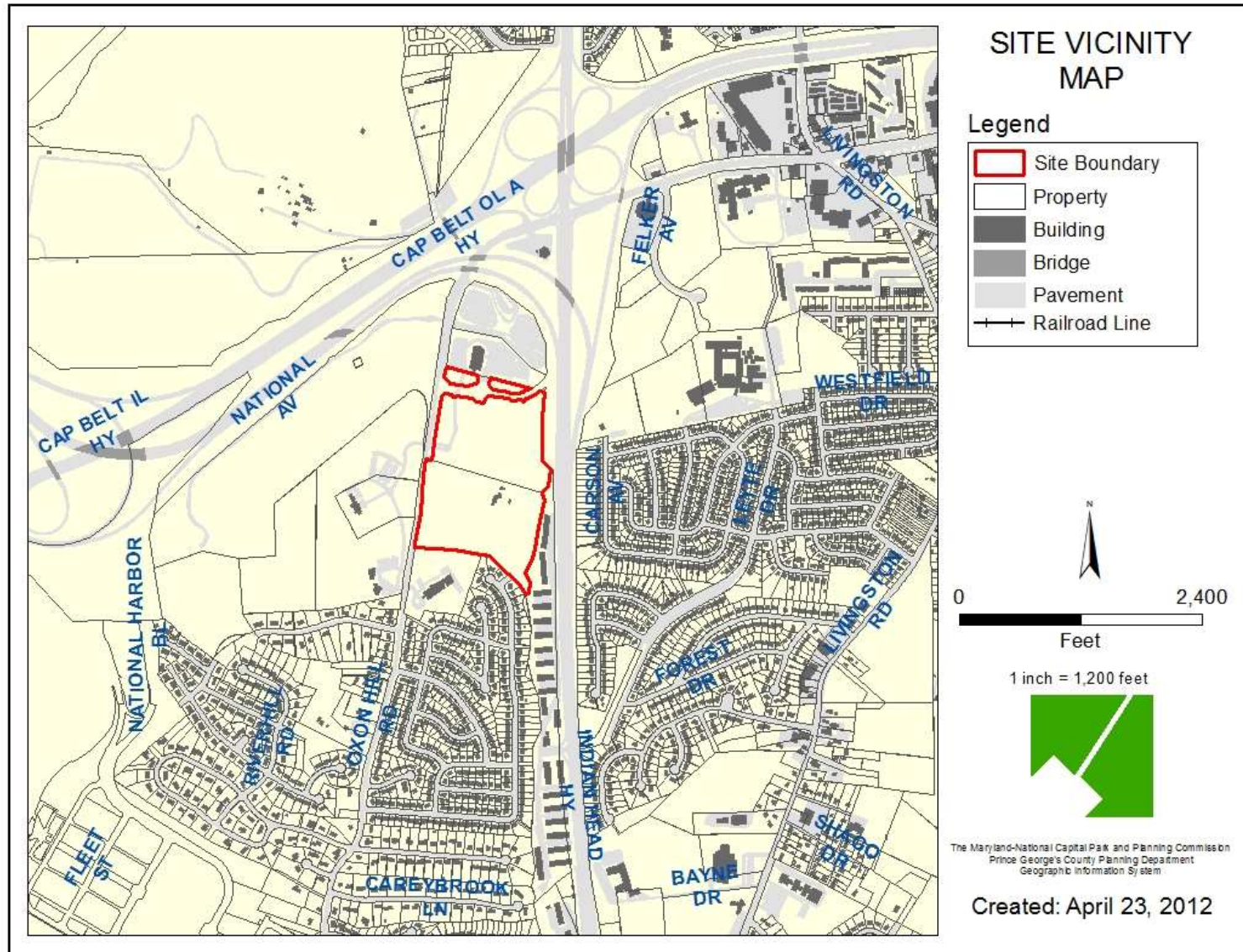
CASE: DSP-11025-01

SALUBRIA CENTER

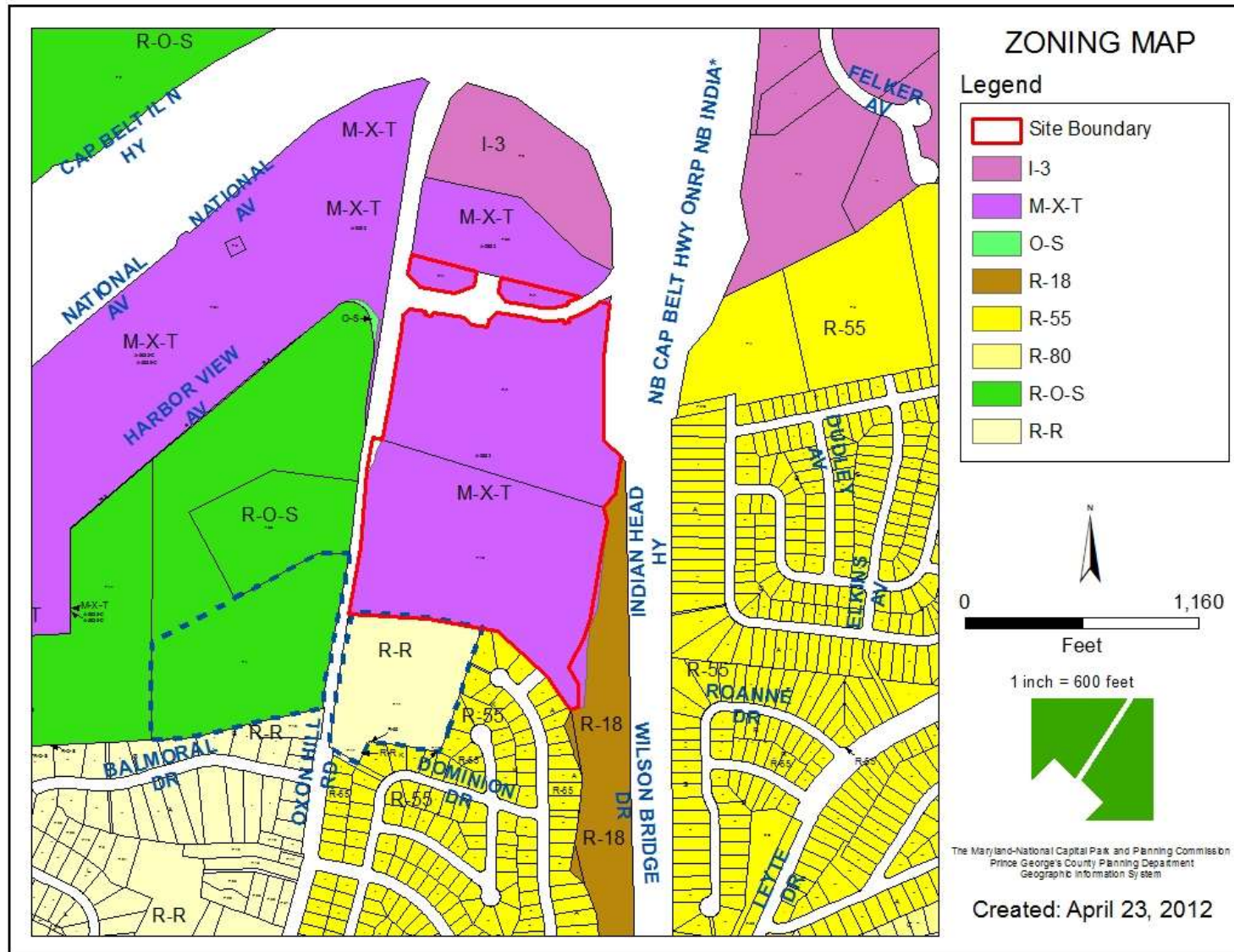
GENERAL LOCATION MAP



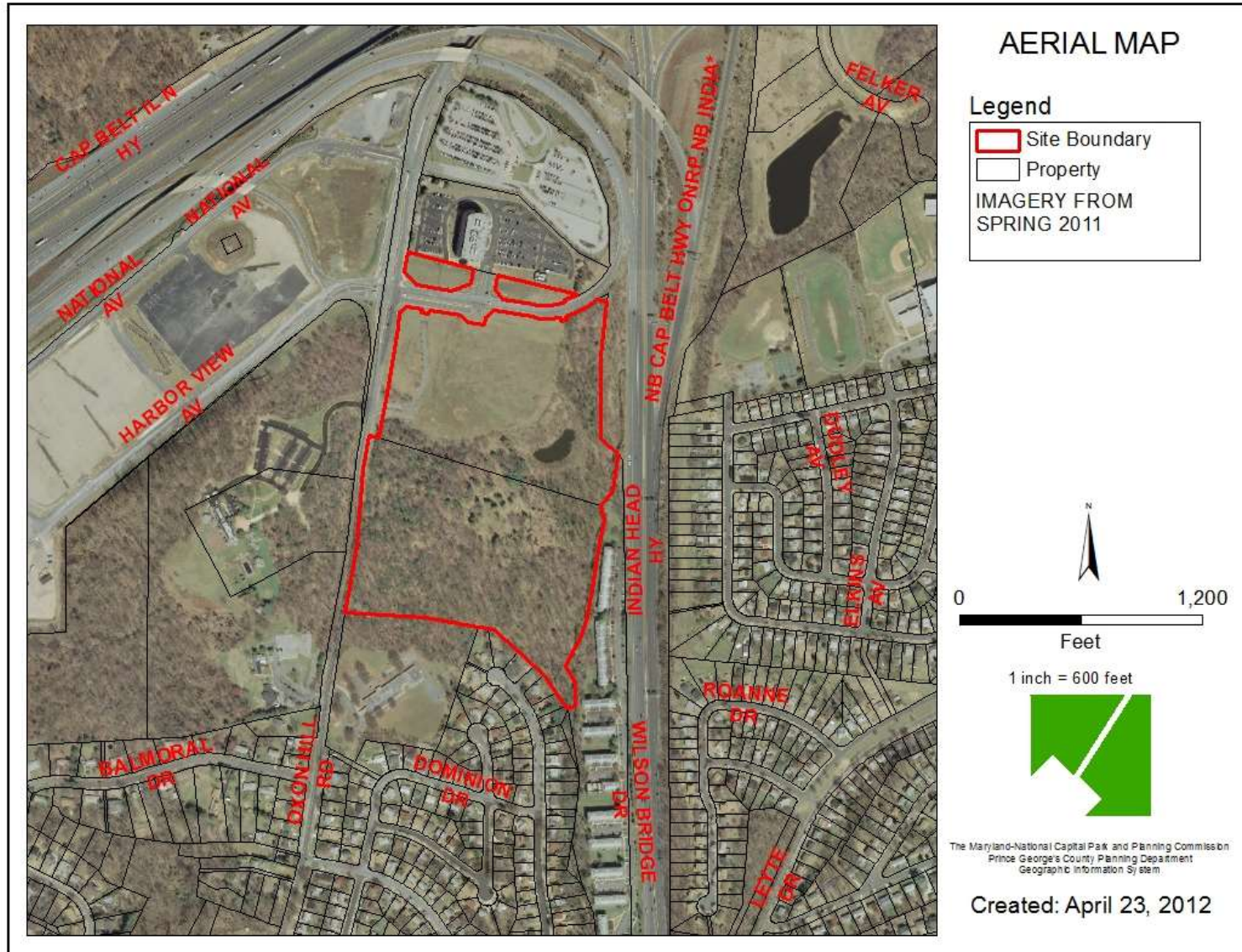
SITE VICINITY



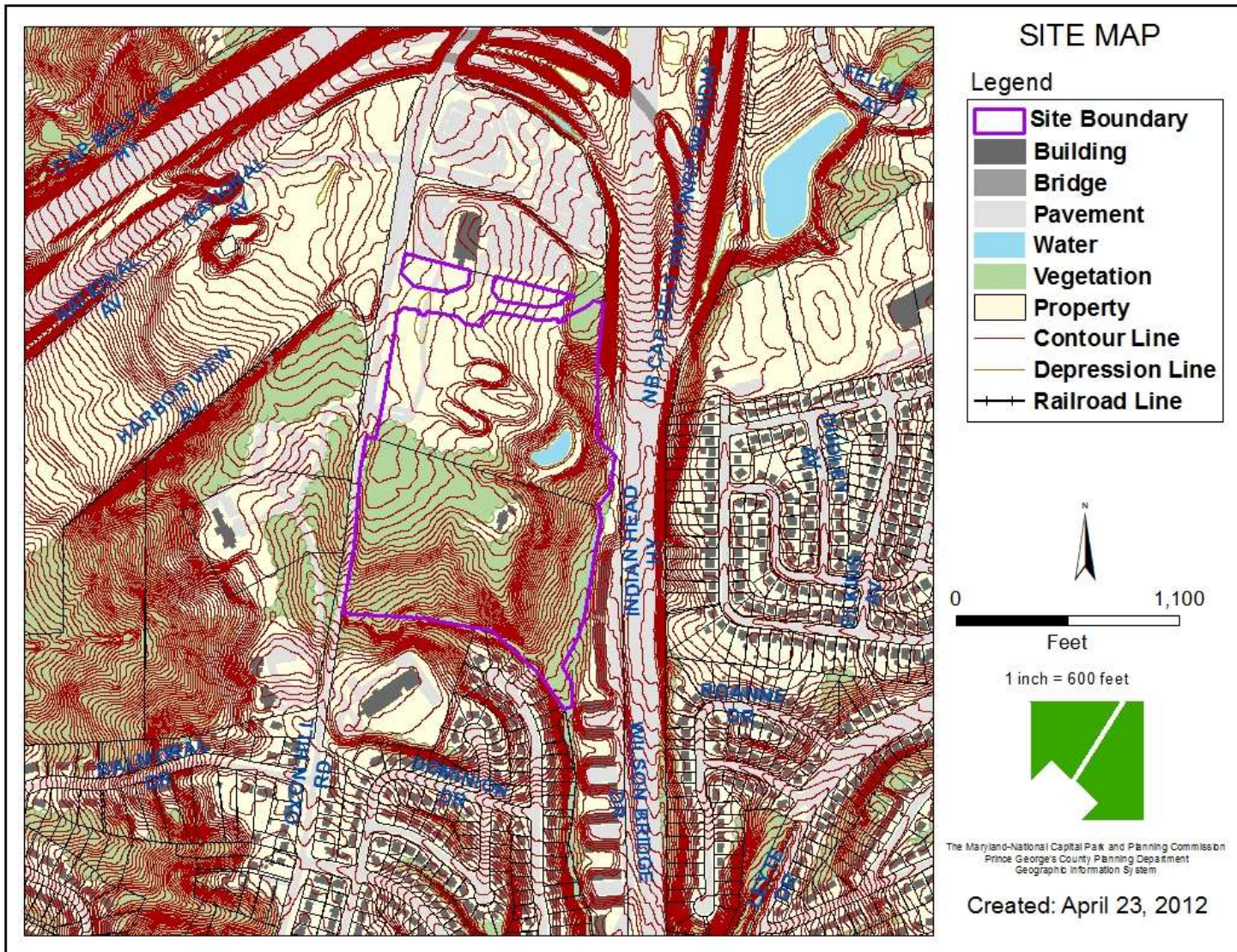
ZONING MAP



AERIAL MAP



SITE MAP



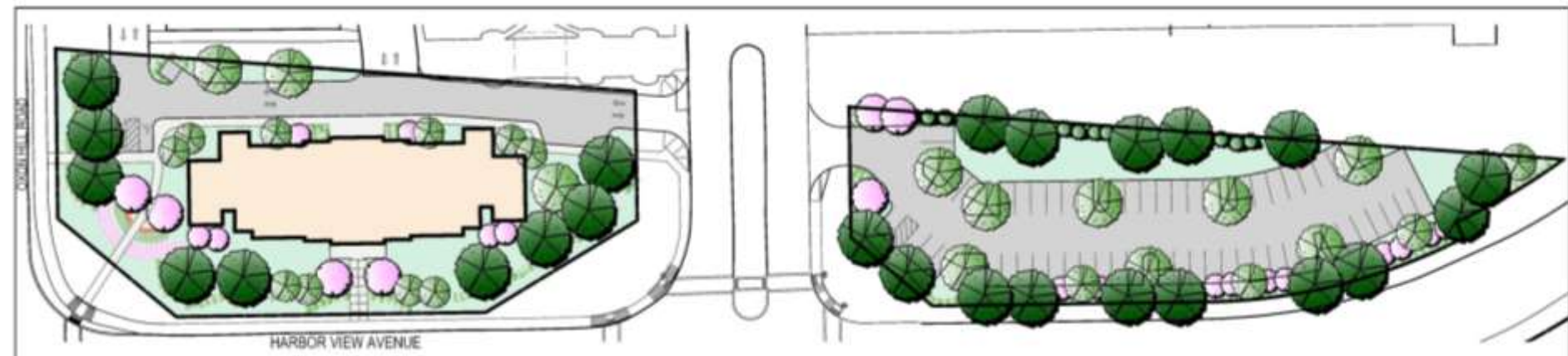
ADJACENT DEVELOPMENT



RENDERED LANDSCAPE PLAN



RENDERED LANDSCAPE PLAN: HOTEL



PREVIOUS HOTEL ELEVATIONS (DSP-11025)

5 Stories
100 Rooms



PREVIOUS HOTEL ELEVATIONS (DSP-11025)



5 Stories
100 Rooms



Left Side Elevation (East)

Scale: 1" = 16'-0"



Right Side Elevation (West)

Scale: 1" = 16'-0"

PROPOSED HOTEL ELEVATIONS (NORTH)



PROPOSED HOTEL ELEVATIONS (SOUTH)

copyright © 2013 brown | craig | turner



PROPOSED HOTEL ELEVATIONS (WEST & EAST)



WEST ELEVATION
SCALE: 3/32" = 1'-0"

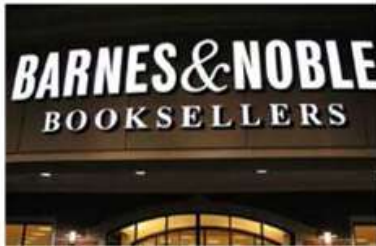


EAST ELEVATION

SIGNAGE AND LIGHTING



Signage (proposing LED halo-lights)
A. Interior tenant signage to be individual pin mounted halo-lit letters. Color of letters by tenant with landlord approval. Single light color (more elegant at interior.) Colored letters show up during day, single light color at night



Signage (proposing LED lights)
B. Exterior remote signage to be individual pin mounted internally lit letters, or individually internally lit channel letters. Colors by tenant with landlord approval. (Gives tenant their color identities on exterior.)



Signage (proposing all LED lights)
C. (ALTERNATE OPTION) Exterior remote signage to be individual pin mounted internally lit letters with halo-lighting. Colors by tenant with landlord approval.



D. Tower Signage Type:
Internally illuminated LED channel letters painted navy blue and backlit with metal halide lamps.

LIGHTING FIXTURE SCHEDULE:

LIGHT FIXTURE: LITHONIA
175W METAL HALIDE
UPLIGHT (FACADE
LIGHTING); OR EQUAL



WALL SCONCE: HUBBARDTON
FORGE DOUBLE AXIS LARGE
LED OUTDOOR WALL
SCONCE 306425D; OR
EQUAL



Building-Mounted Signage

IMAGES OF CONSTRUCTED NATIONAL HARBOR HOTELS



**If you wish to speak
and/or become a
Party of Record, please
sign in at the front desk**

**Note: Please turn off all
cell phones**

SUBJECT SITE AND SETTING



OXON HILL ROAD IMPROVEMENT PROJECT

DPW&T Web Information dated March 2011



SURROUNDING COMMUNITY: OXON HILL MANOR

