

ITEM: 8

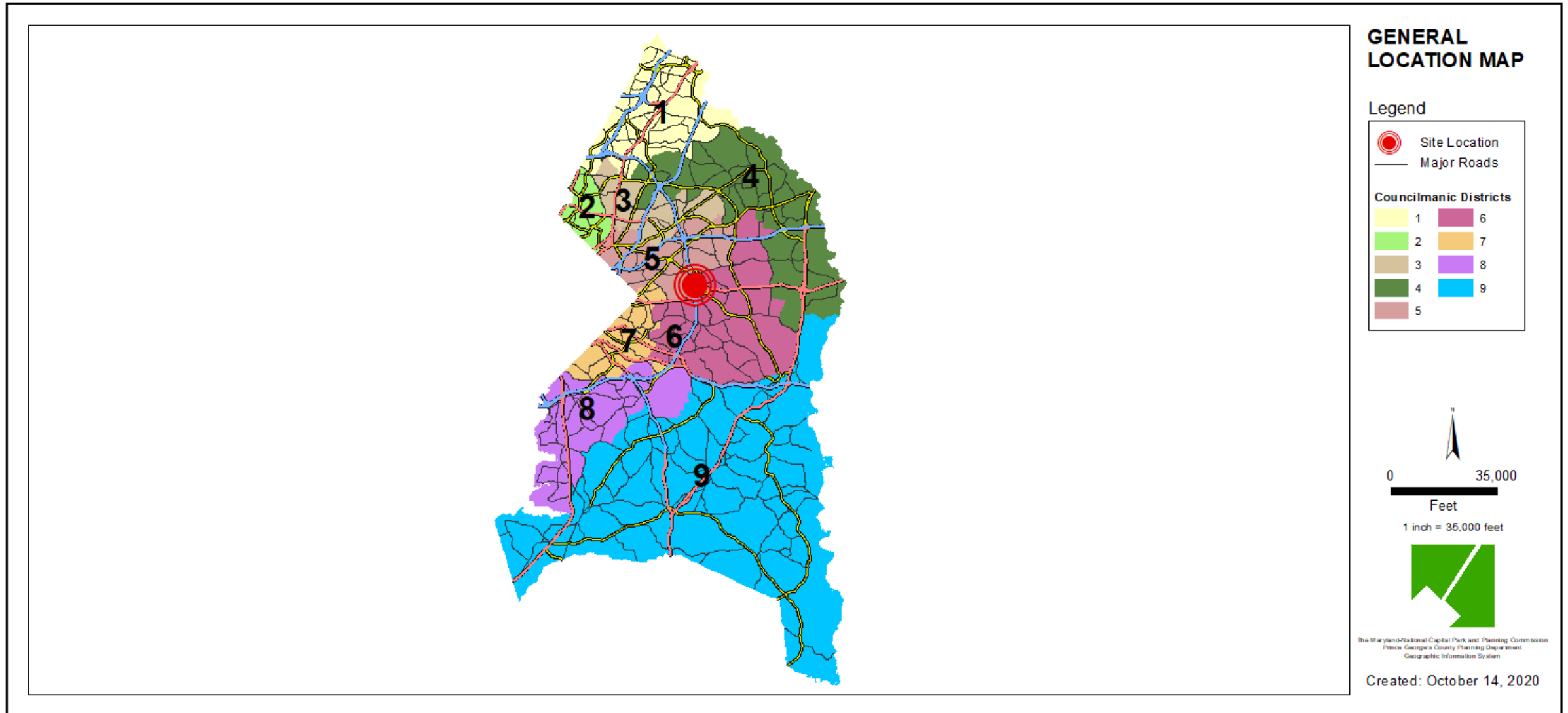
CASE: DSP-14028-04

**PRINCE GEORGE'S COUNTY REGIONAL HOSPITAL
(CURRENTLY KNOWN AS UNIVERSITY OF MARYLAND
CAPITAL REGION MEDICAL CENTER)
COMPREHENSIVE SIGNAGE PLAN**

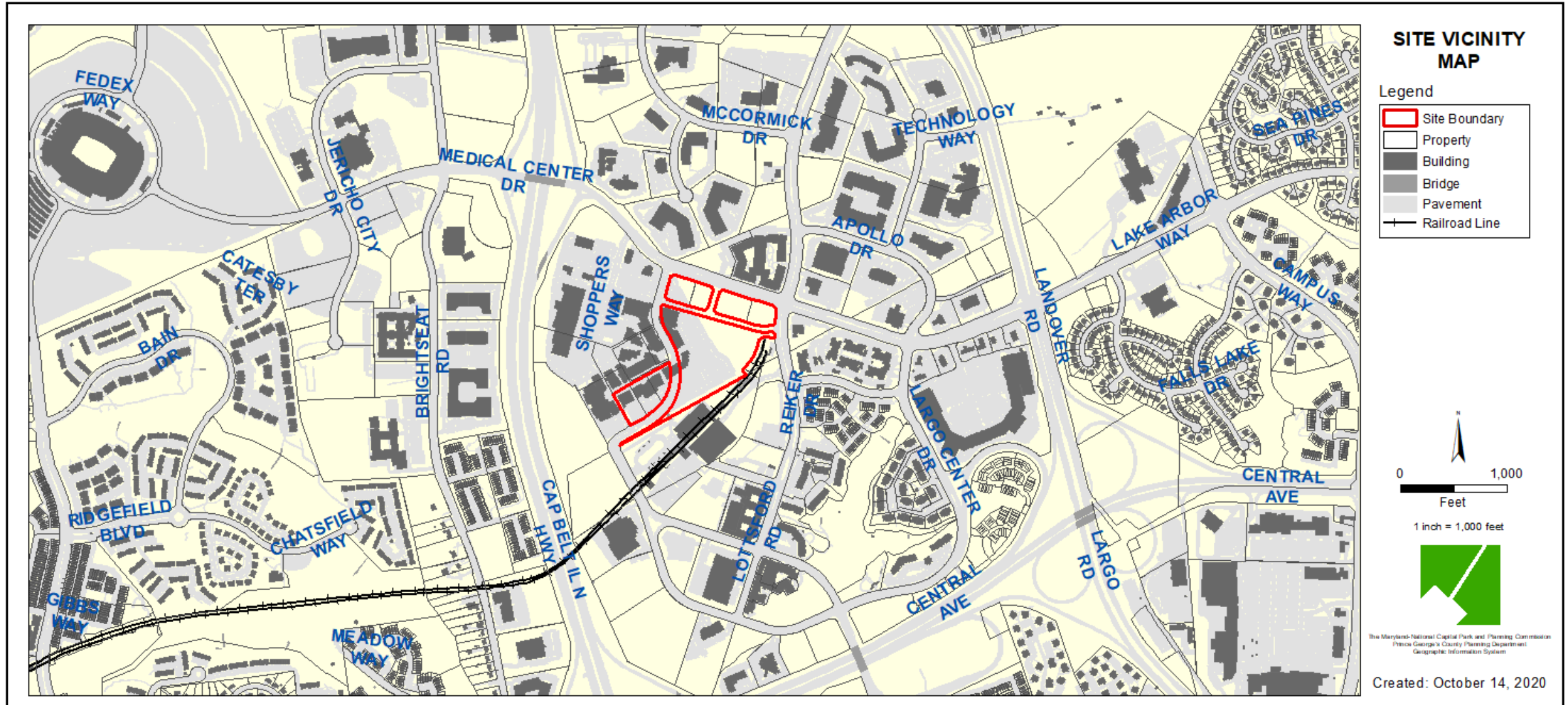
THE PRINCE GEORGE'S COUNTY PLANNING DEPARTMENT



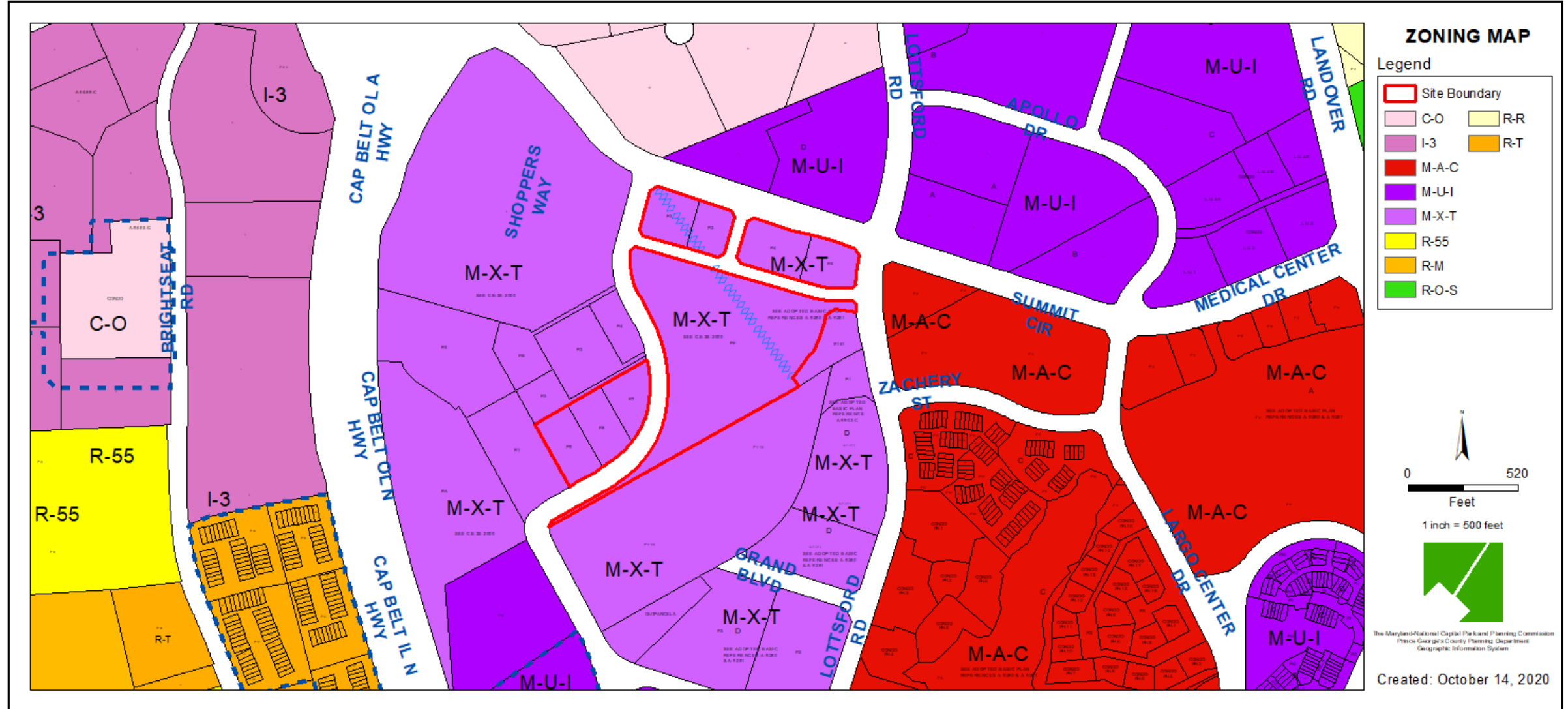
GENERAL LOCATION MAP



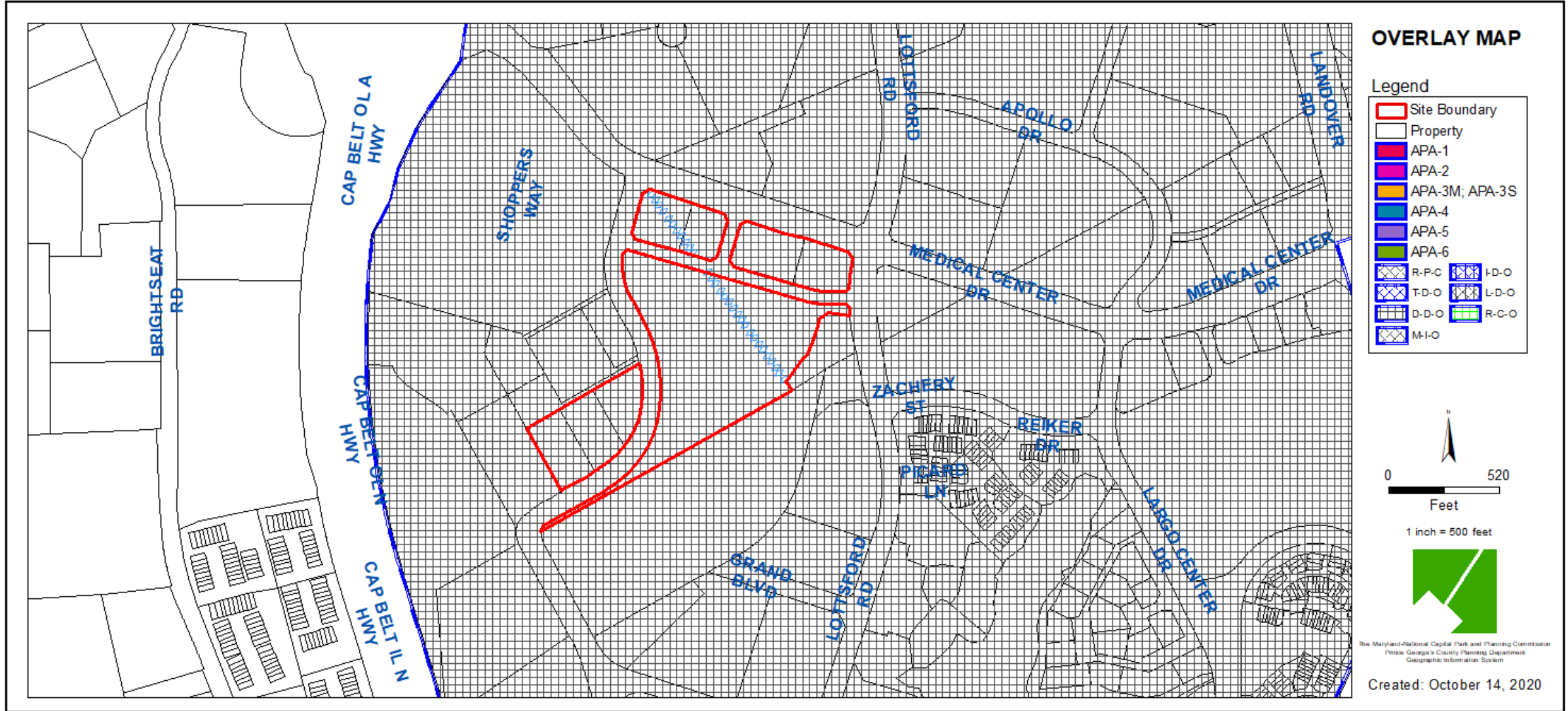
SITE VICINITY



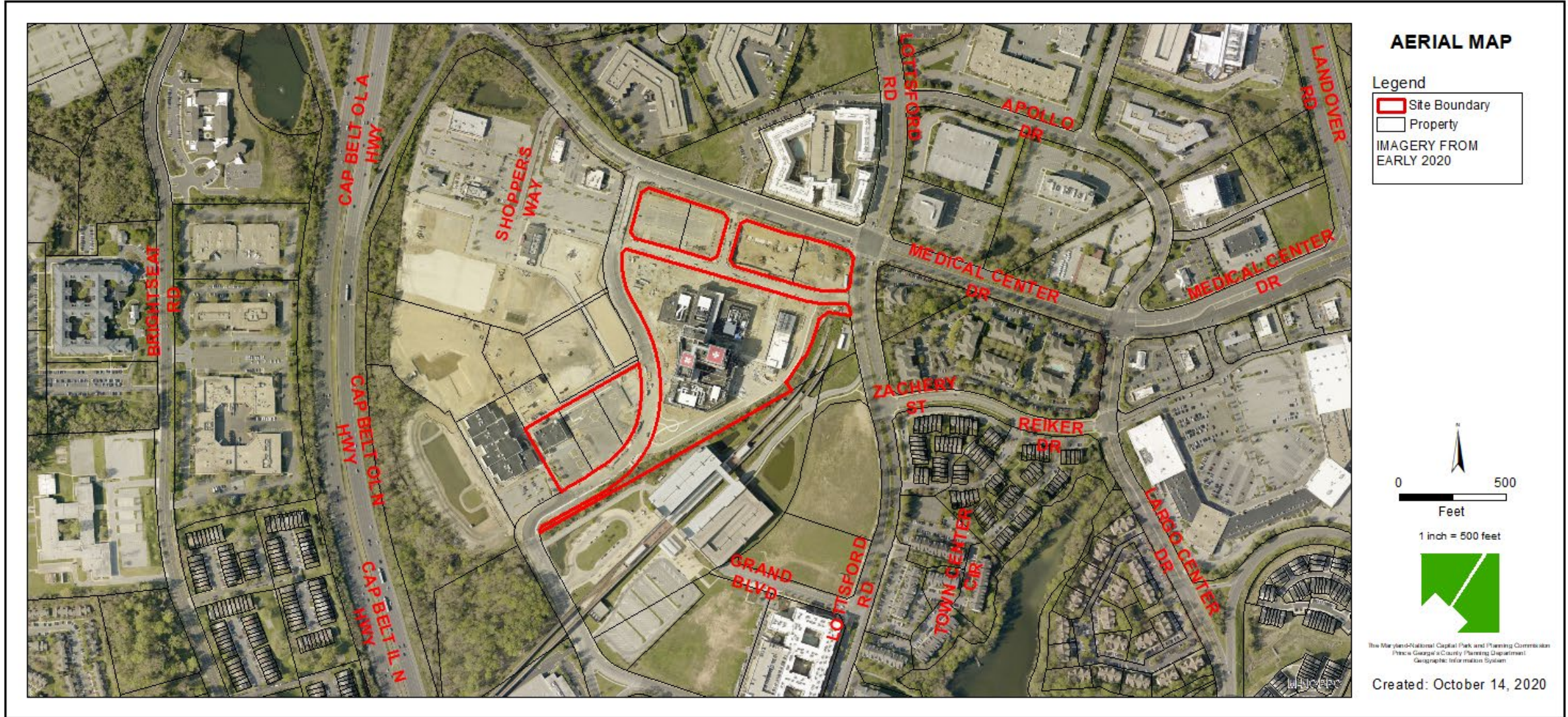
ZONING MAP



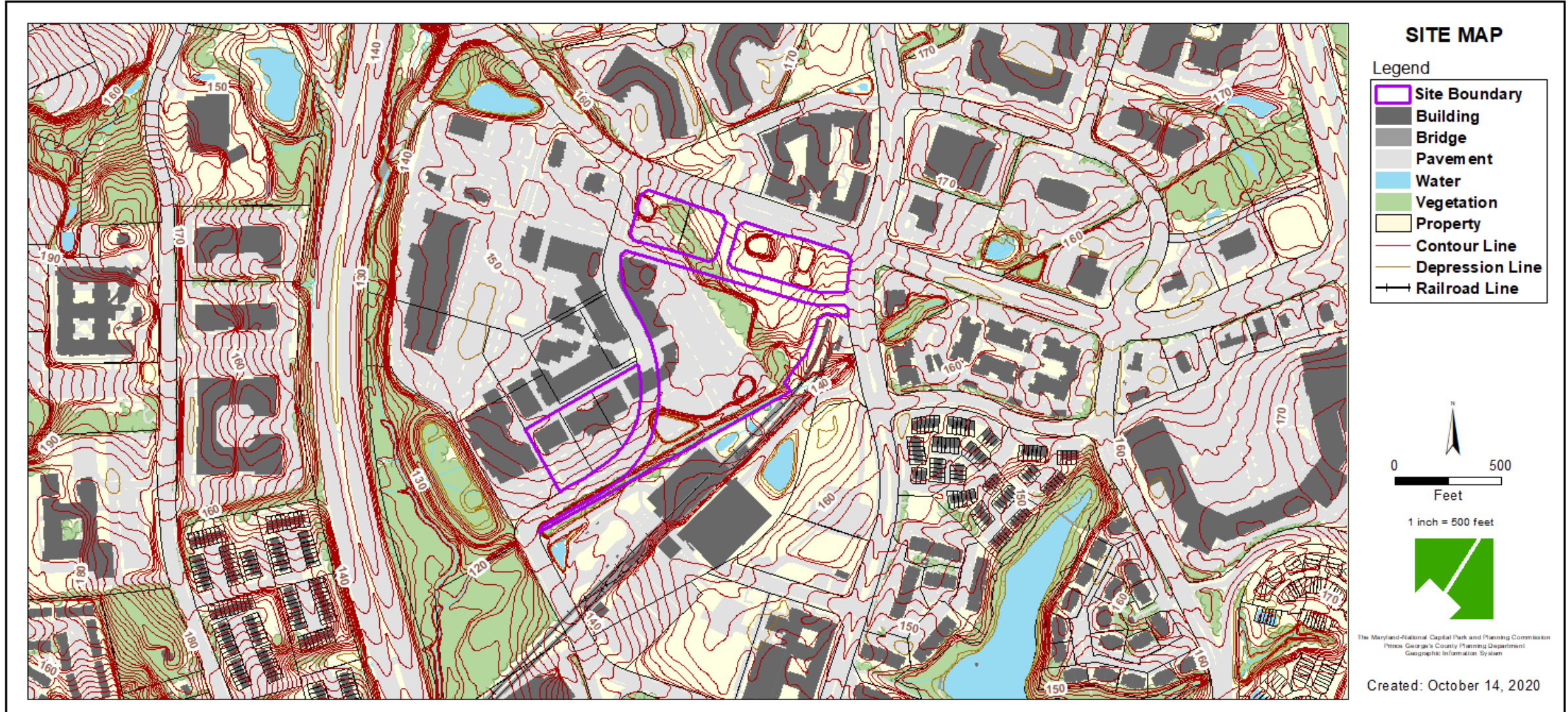
OVERLAY MAP



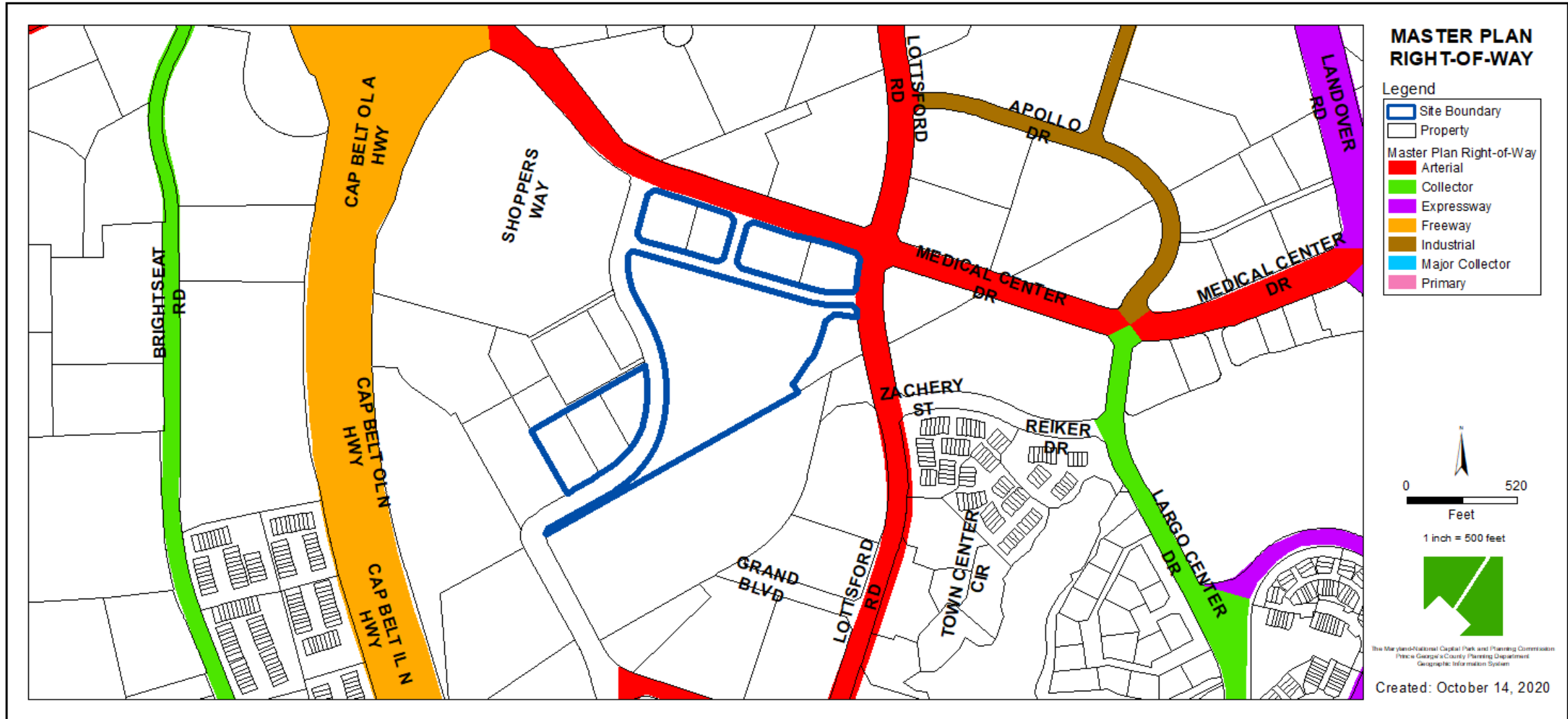
AERIAL MAP



SITE MAP



MASTER PLAN RIGHT-OF-WAY MAP

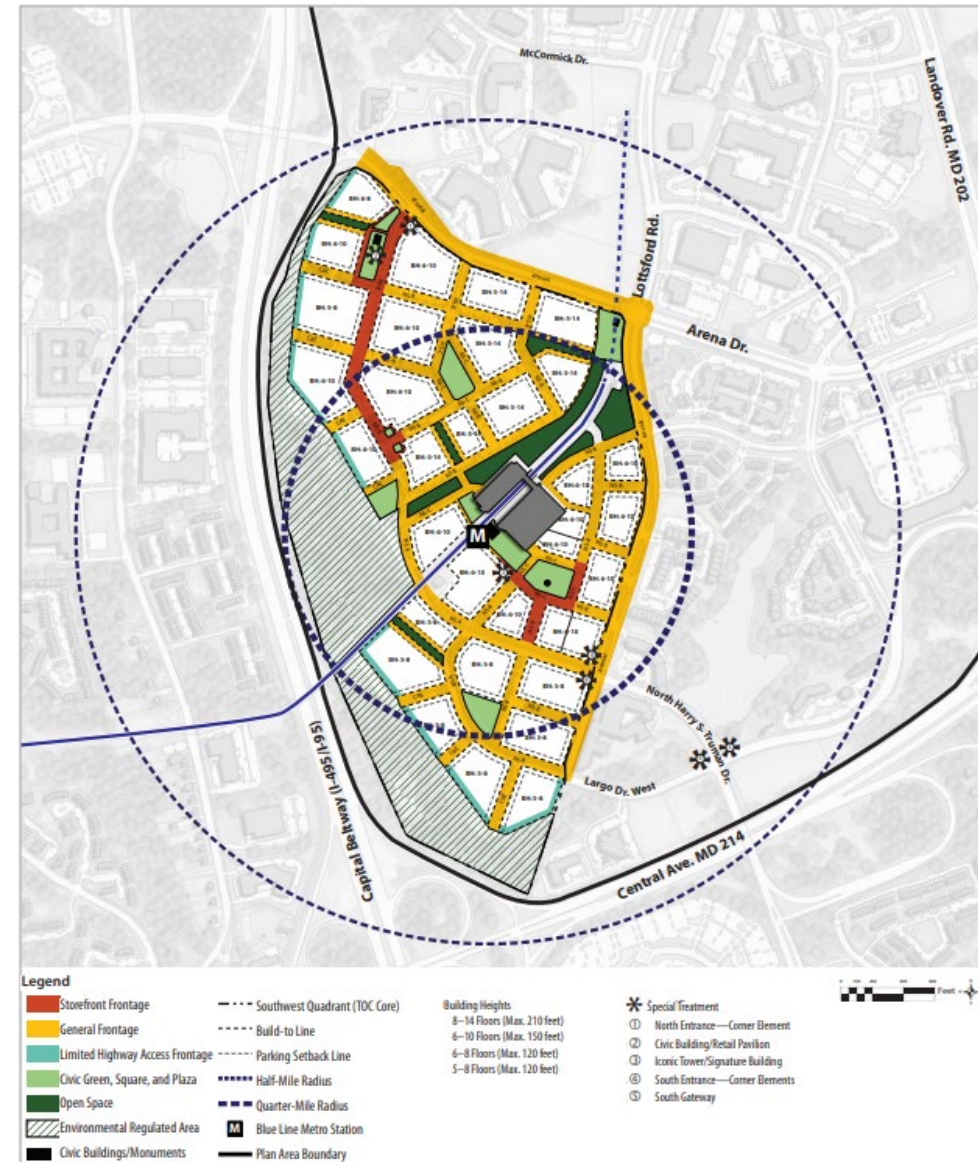


LARGO TOWN CENTER SECTOR PLAN

TOD CORE AREA

APPROVED LARGO TOWN CENTER SECTOR PLAN AND SMA

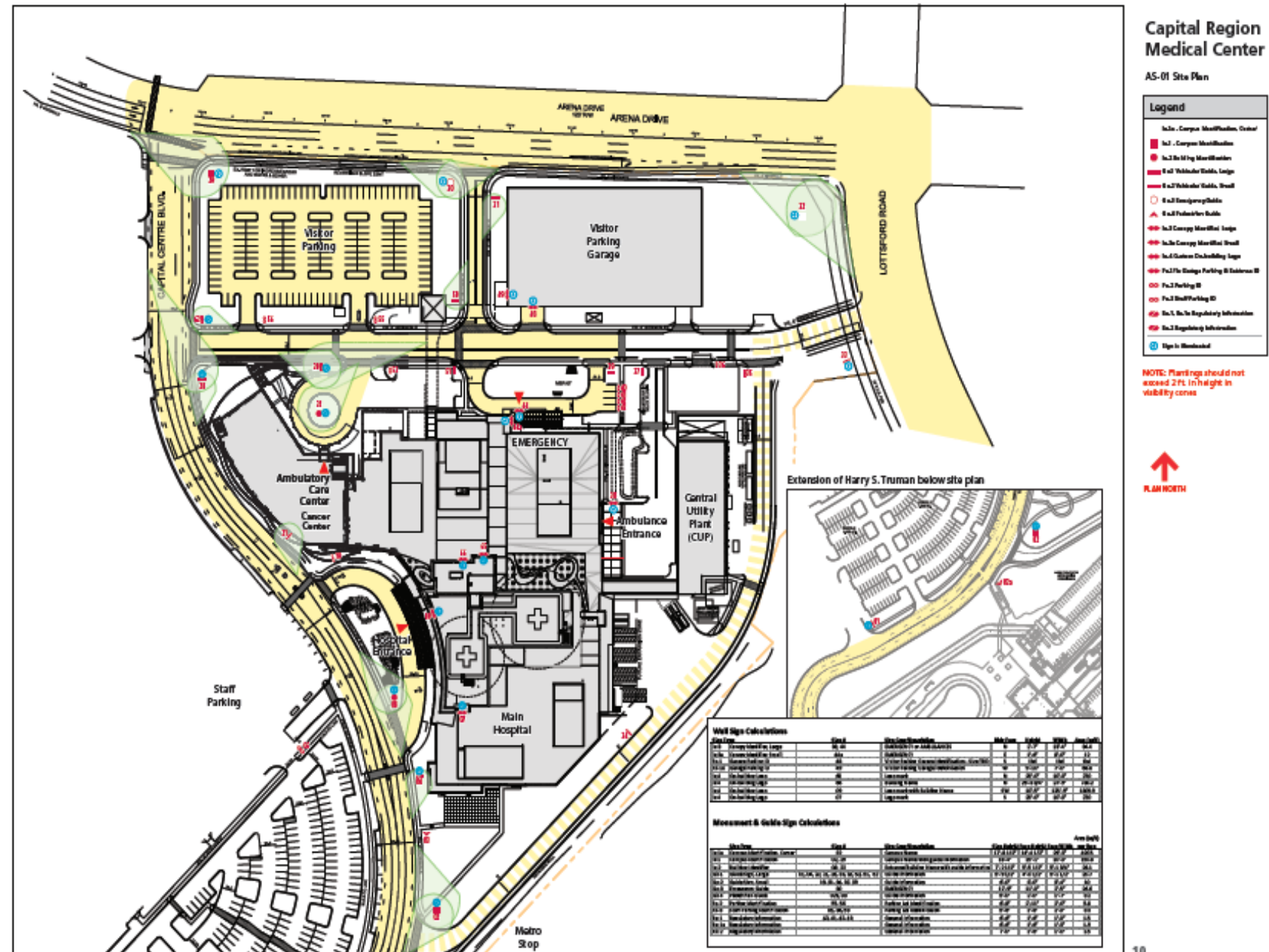
Map 30: Illustrative TOD Core Concept Plan



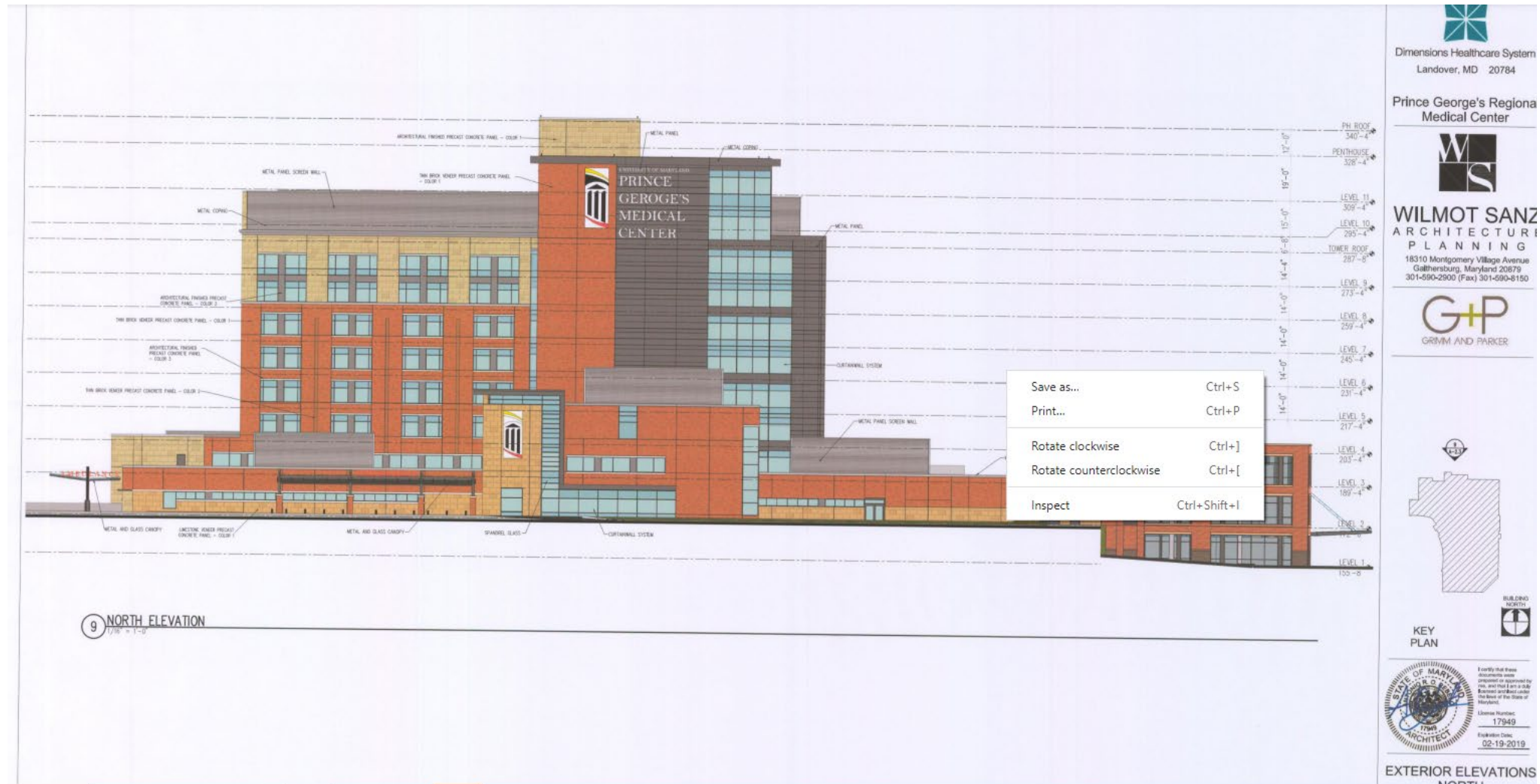
APPROVED DETAILED SITE PLAN



SIGNAGE PLAN

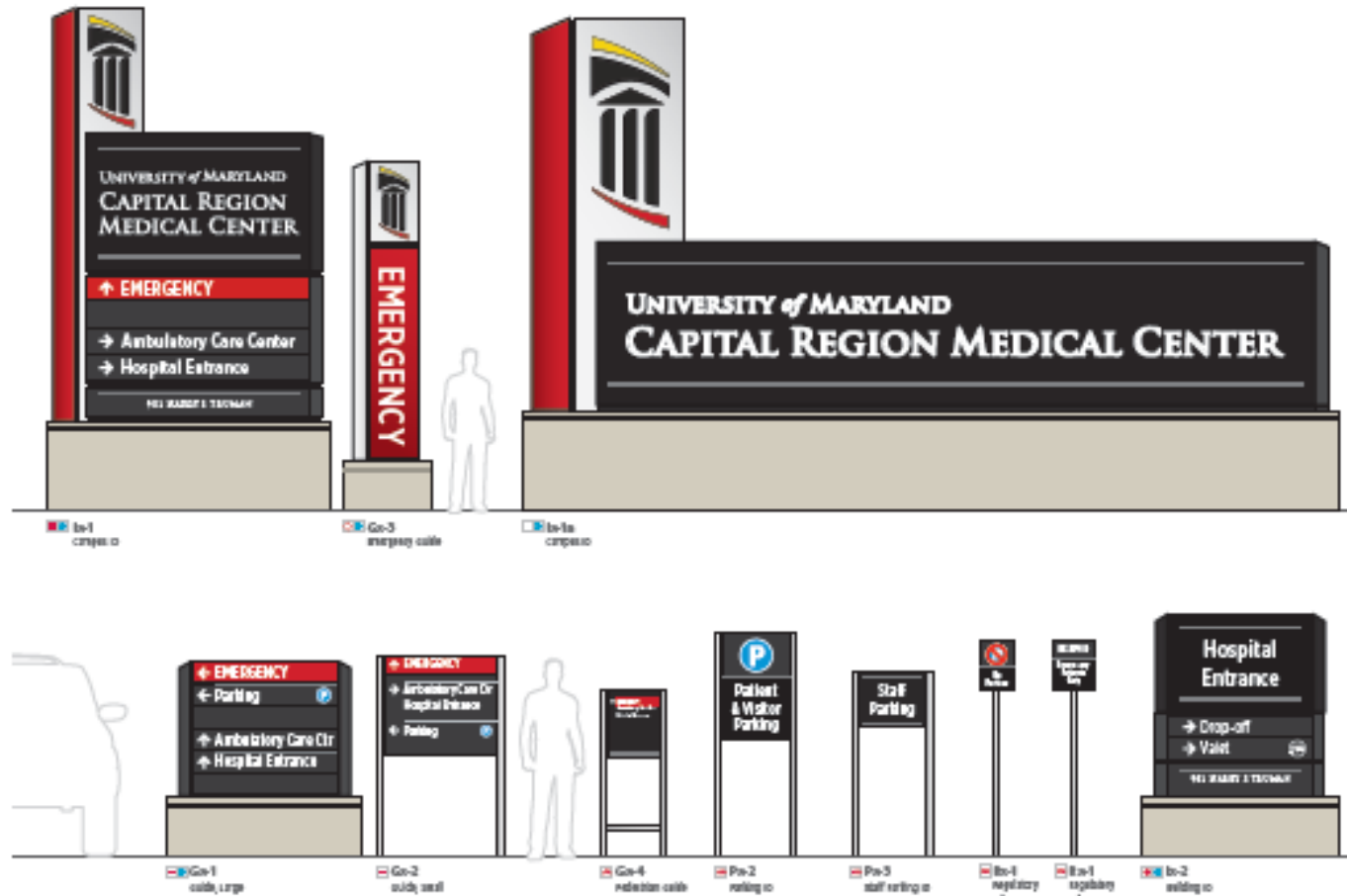


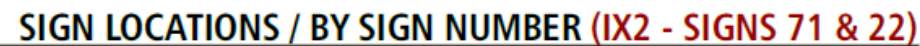
BUILDING MOUNTED SIGNS APPROVED PREVIOUSLY



SIGNAGE

SIGN TYPE ARRAY



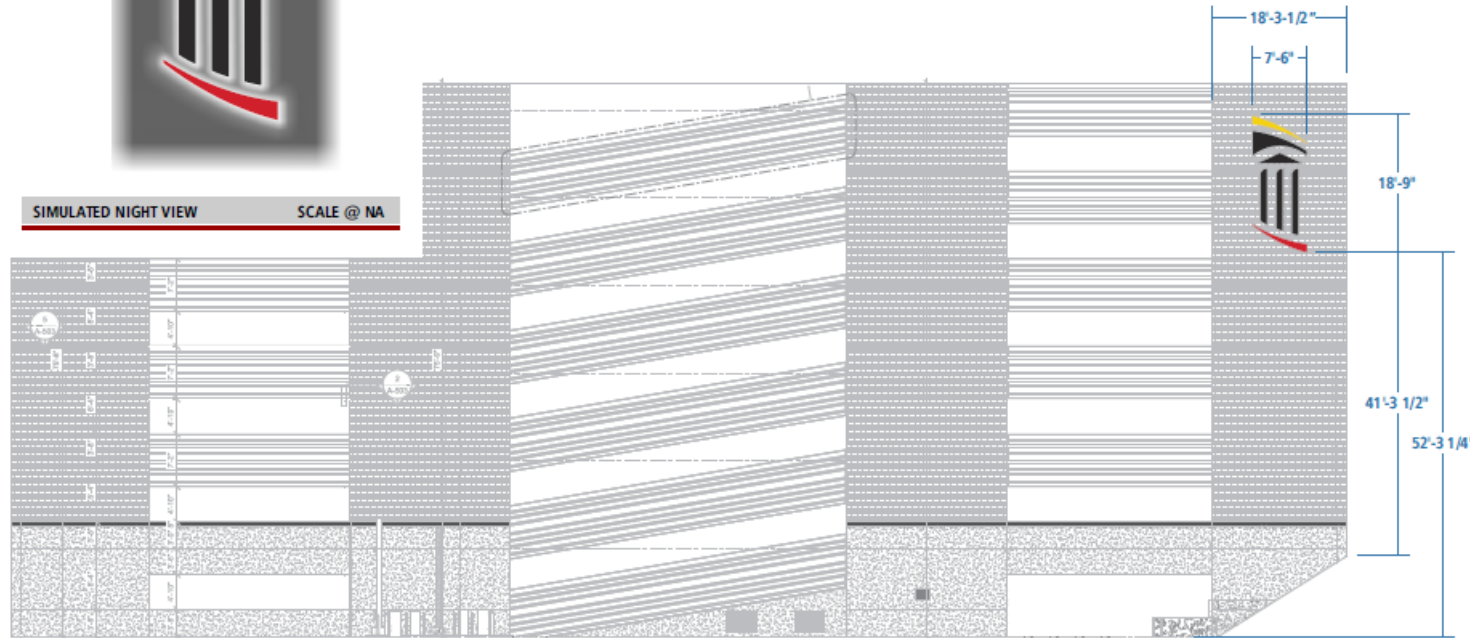


SIGNAGE - GARAGE-MOUNTED



SIMULATED NIGHT VIEW

SCALE @ NA



GARAGE EAST ELEVATION

SCALE @ 1/16" = 1 Foot

- CREATE ONE CHANNEL LOGO SIGN.
- DUAL LIT ELEMENTS WITH REVERSE CHANNEL LETTER ELEMENTS.
- TOP YELLOW LOGO SECTION IS FRONT AND BACK LIT. TRANSLUCENT YELLOW VINYL FILM ON FACE OF ELEMENT ILLUMINATES YELLOW. CLEAR LEXAN BACK ON ELEMENT CREATING A HALO OF WHITE LIGHT BEHIND ELEMENT. ELEMENT SPACED OFF WALL.
- BOTTOM RED LOGO SECTION IS FRONT AND BACK LIT. TRANSLUCENT RED VINYL FILM ON FACE OF ELEMENT ILLUMINATES RED. CLEAR LEXAN BACK ON ELEMENT CREATING A HALO OF WHITE LIGHT BEHIND ELEMENT. ELEMENT SPACED OFF WALL.
- ALL OTHER ELEMENTS FORMED AS TRADITIONAL REVERSE CHANNEL LETTERS W/ 1/8" THICK ALUMINUM FACES. .063" ALUMINUM RETURNS 3/16" LEXAN BACKS. WHITE LED MODULES W/ 12 VOLT POWER SUPPLY(S).
- ALL ELEMENTS MOUNTED TO PRECAST WALL WITH HIT-HY 200-R - Injectable Adhesive Anchors - Hilti USA

BUILDING ELEVATION - SIGN TYPE (IX4 - SIGNS 70)

W.O.#
00000QUOTE ID #
000815
AppleSigns
VISION · DESIGN · IMPACT

 404 Serendipity Dr • Millersville, Md. 21108
Phone 410.987.7446 • Fax 410.987.1580
Visit us at www.applesigns.com

 CLIENT: UMMS
CONTACT: BECKY PROTKHO
PHONE: 443-253-4084

 ADDRESS:
801 G Capital Centre Blvd,
Upper Marlboro, MD 20774

 APPROVAL SIGNATURE / DATE APPROVED
SALES / PM Andrew G / Phil P

 REV. DATE BY/HRS
FA 03/06/20 PPARK
R1 03/13/20 PPAOK

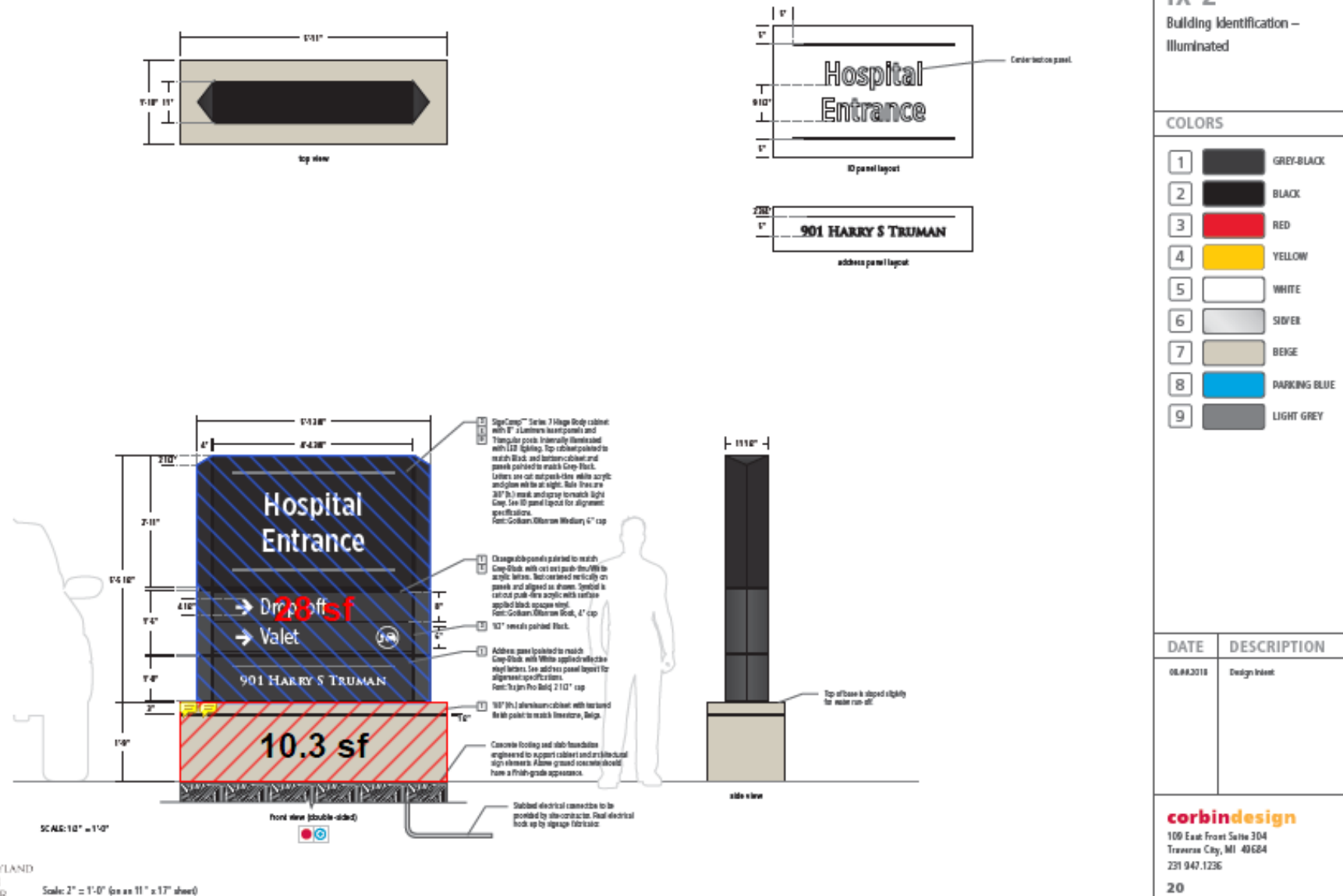
 PAGE
3

This is an original, unpublished drawing by Apple Signs, Inc. It is for your personal use, in connection with a project being planned for you by Apple Signs, Inc. This drawing is not to be shown to anyone outside of your organization nor to be used, reproduced, copied or submitted in any fashion. Use of this design or the salient elements of this design in any sign done by any other company, without the express written permission of Apple Signs, Inc. is forbidden and carries a civil forfeiture of \$1000 dollars or 25% of the purchase price of the sign, whichever ever is greater. This sign is intended to be installed in accordance with the requirements of Article 606 of the National Electrical Code and/or other applicable local codes. This includes proper grounding and bonding of the sign. Apple Signs, Inc. will endeavor to closely match colors including PMS, where specified. We cannot guarantee exact matches due to varying compatibility of surface material and paint used. All sizes and dimensions are illustrated for direct comparison of a project and are not to be understood as being exact size, exact colors or exact scale. © Apple Signs, Inc. 2019

MONUMENT SIGNAGE



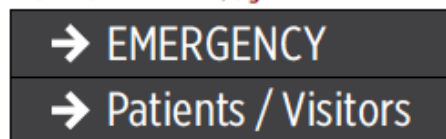
DIRECTIONAL SIGNAGE



DIRECTIONAL/IDENTIFICATION SIGNAGE



EAST FACE1 IX2 / sign 71



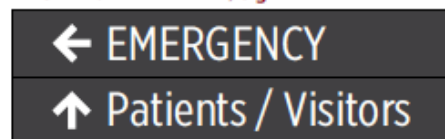
EAST FACE 2/3 IX2 / sign 71



EAST FACE 4 IX2 / sign 71



WEST FACE1 IX2 / sign 71



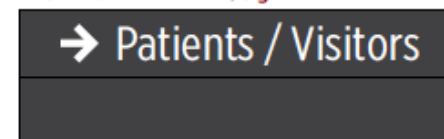
WEST FACE 2/3 IX2 / sign 71



WEST FACE 4 IX2 / sign 71



EAST FACE1 IX2 / sign 72



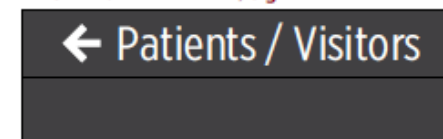
EAST FACE 2/3 IX2 / sign 72



EAST FACE 4 IX2 / sign 72



WEST FACE1 IX2 / sign 72



WEST FACE 2/3 IX2 / sign 72



WEST FACE 4 IX2 / sign 72

SIGN 71, IX2 / LAYOUTS SCALE @ 3/4" = 1 Foot

SIGN 72, IX2 / LAYOUTS SCALE @ 3/4" = 1 Foot

FACE LAYOUTS (IX2 - SIGNS 71 & 72)

W.O.#
00000QUOTE ID #
000815
Apple Signs
VISION · DESIGN · IMPACT

 404 Serendipity Dr • Millersville, Md. 21108
Phone 410.987.7446 • Fax 410.987.1580
Visit us at www.applesigns.com

 CLIENT: UMMS
CONTACT: CALLIE PROCHNO
PHONE: 443-253-4084

 ADDRESS:
801 G Capital Centre Blvd,
Upper Marlboro, MD 20774

 APPROVAL SIGNATURE / DATE APPROVED
SALES / PM Andrew G / Phil P

 REV. DATE BY/HRS
FA 03/05/20 PPARK

 PAGE
5

This is an original, unpublished drawing by Apple Signs, Inc. It is for your personal use, in conjunction with a project being planned for you by Apple Signs, Inc. This drawing is not to be shown to anyone outside of your organization nor is it to be used, reproduced, copied or submitted in any fashion. Use of this design or the salient elements of this design in any sign done by any other company, without the express written permission of Apple Signs, Inc. is forbidden and carries a civil forfeiture of \$1000 dollars or 25% of the purchase price of the sign, whichever is greater. This sign is intended to be installed in accordance with the requirements of Article 600 of the National Electrical Code and/or other applicable local codes. This includes proper grounding and bonding of the sign. Apple Signs, Inc. will endeavor to closely match colors including PMS, where specified. We cannot guarantee exact matches due to varying compatibility of surface material and paints used. All sizes and dimensions are illustrated for client's conception of a project and are not to be understood as being exact size, exact colors or exact scale. © Apple Signs, Inc. 2019