

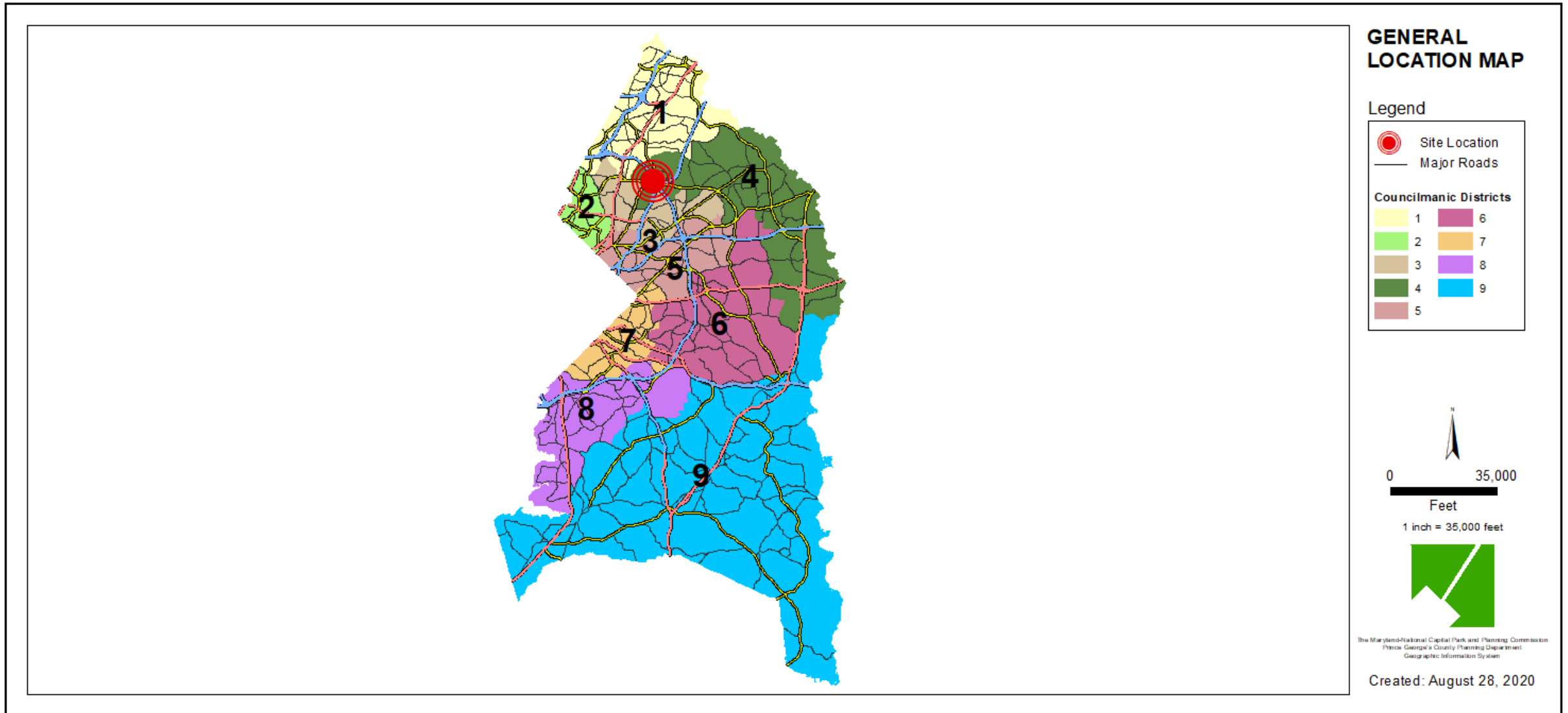
ITEM: 8

CASE: DSP-19045

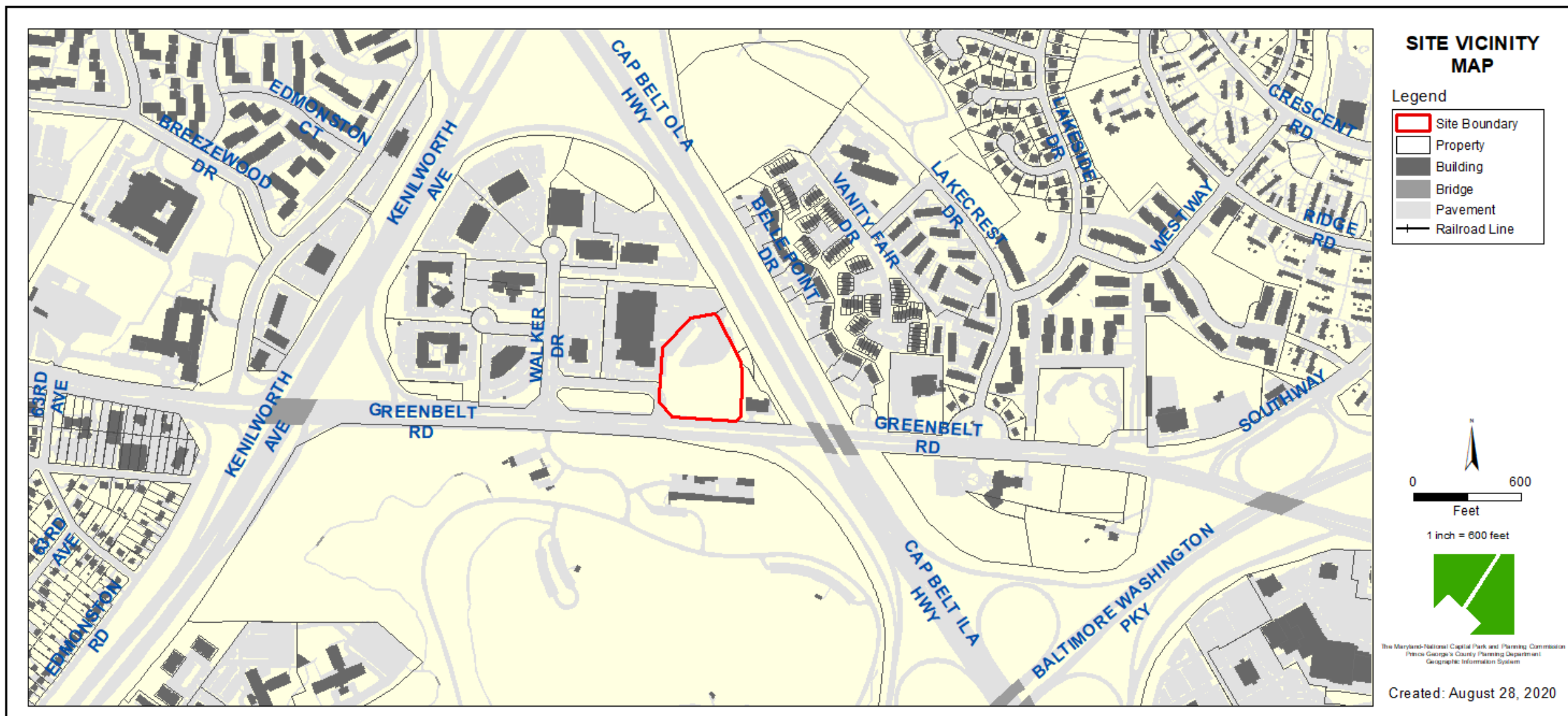
ROYAL FARMS GREENBELT

THE PRINCE GEORGE'S COUNTY PLANNING DEPARTMENT

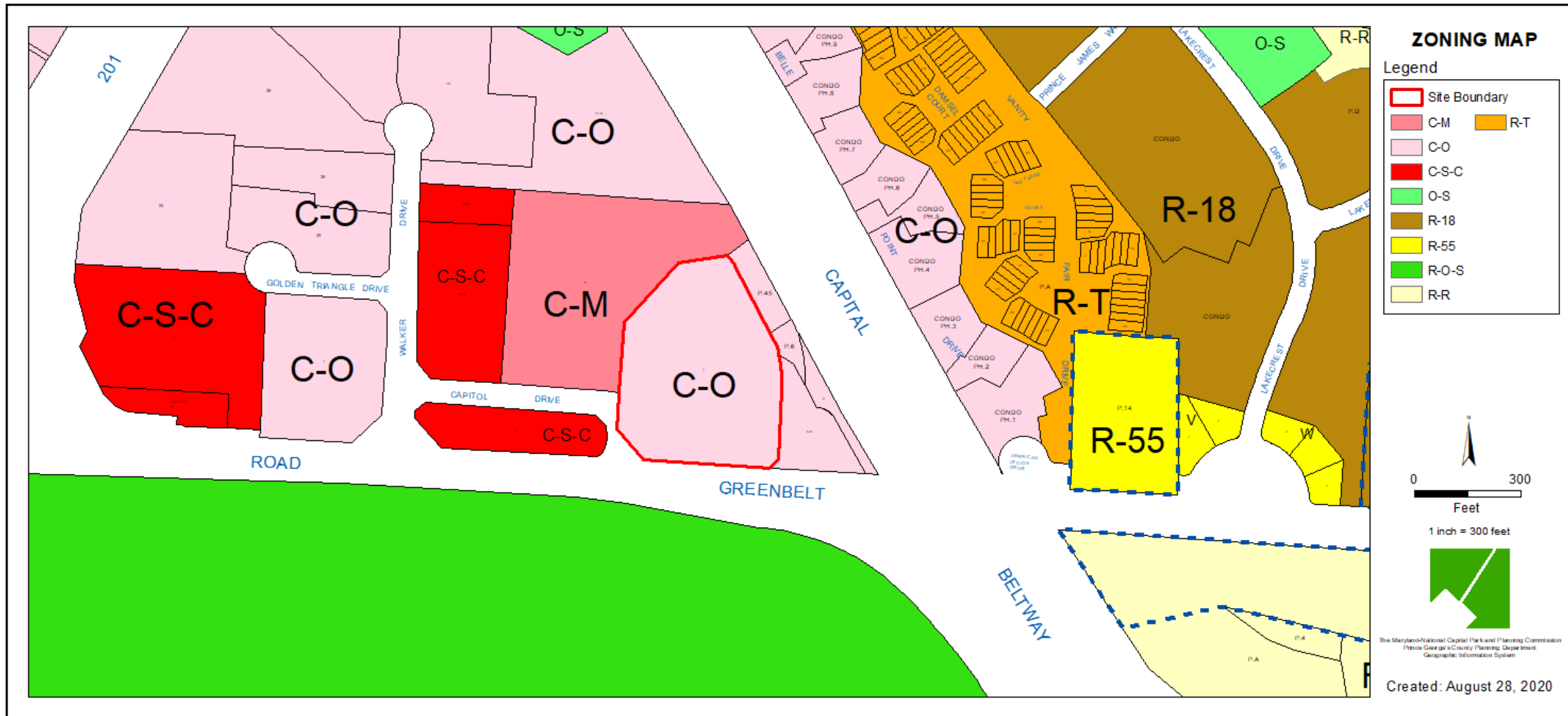
GENERAL LOCATION MAP



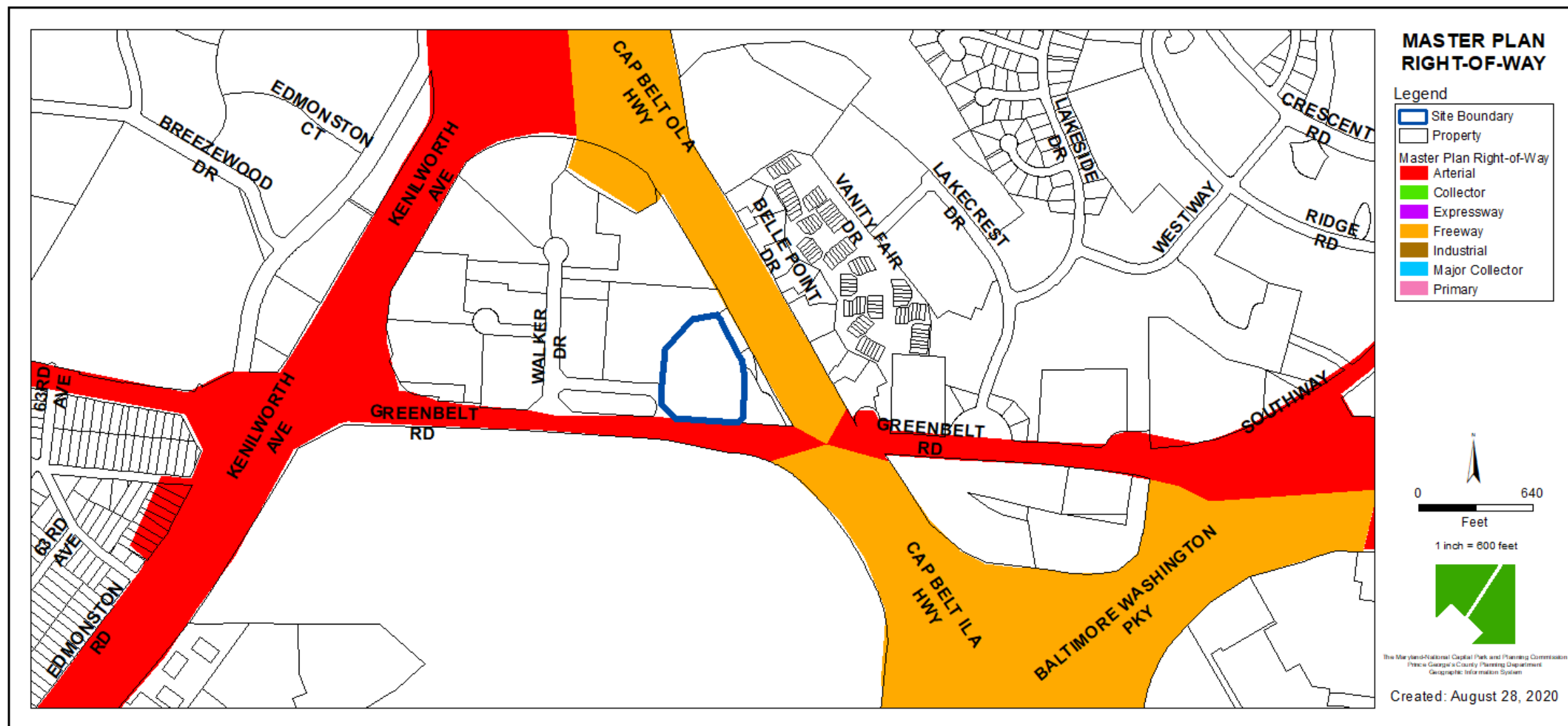
SITE VICINITY



ZONING MAP



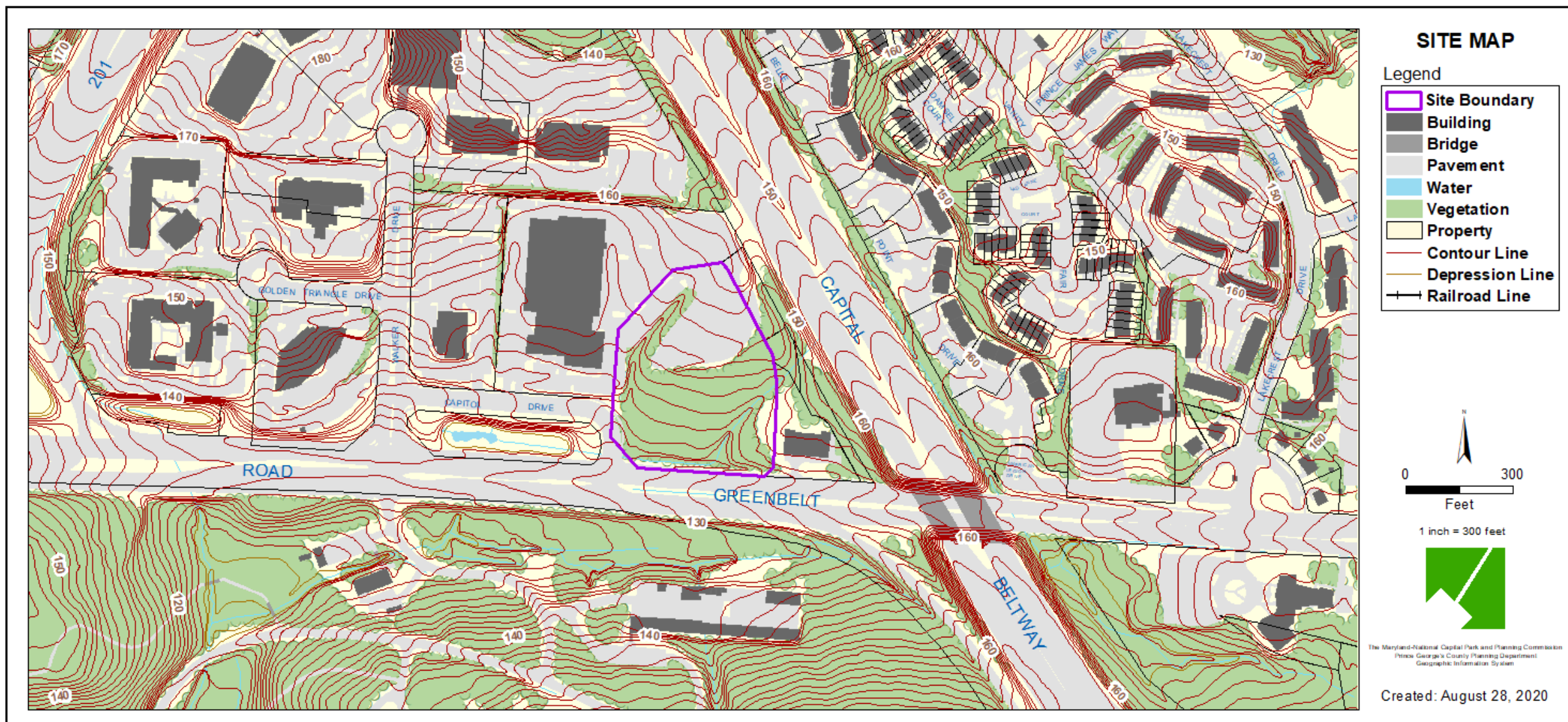
MASTER PLAN RIGHT-OF-WAY MAP



AERIAL MAP



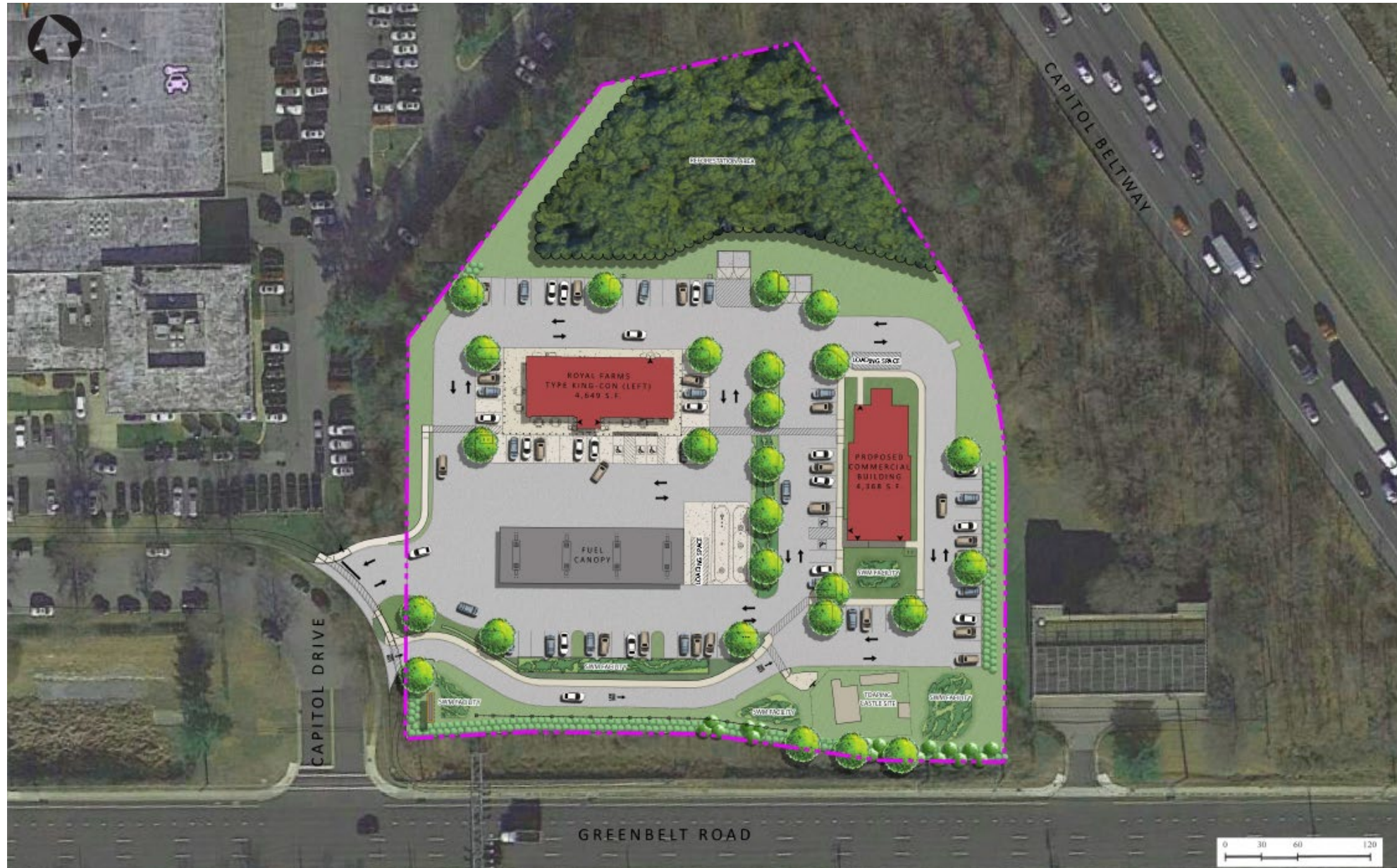
SITE MAP



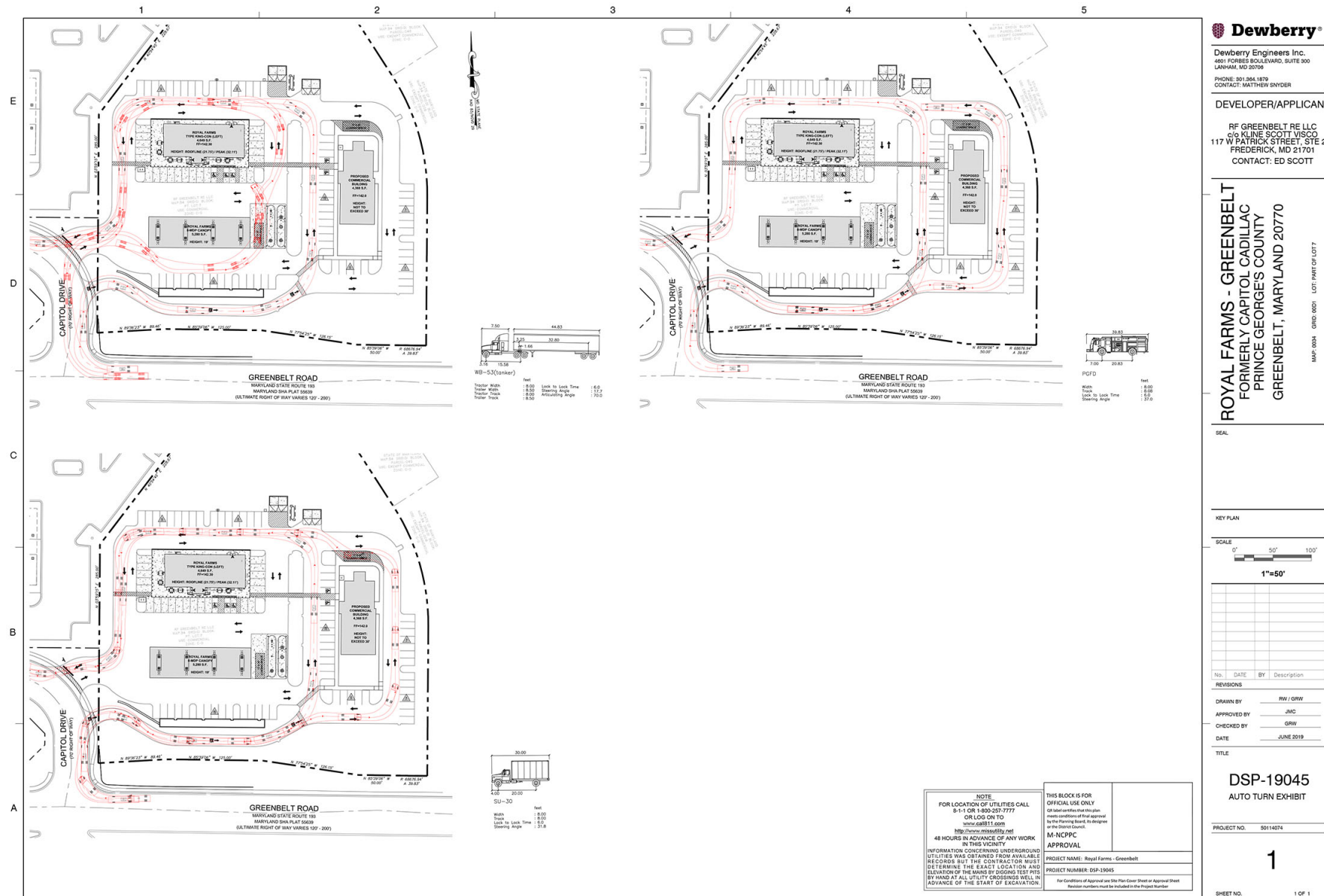
BIRD'S-EYE VIEW WITH APPROXIMATE SITE BOUNDARY OUTLINED



ILLUSTRATIVE SITE PLAN



TRUCK TURNING EXHIBIT



Dewberry Engineers Inc.
4601 FORBES BOULEVARD, SUITE 300
LANHAM, MD 20706

PHONE: 301.364.1879
CONTACT: MATTHEW SNYDER

DEVELOPER/APPLICANT

RF GREENBELT RE LLC
c/o KLINE SCOTT VISCO
117 W PATRICK STREET, STE 200
FREDERICK, MD 21701
CONTACT: ED SCOTT

ROYAL FARMS - GREENBELT
FORMERLY CAPITOL CADILLAC
PRINCE GEORGE'S COUNTY
GREENBELT, MARYLAND 20770

SEAL

KEY PLAN

SCALE 0° 30° 60°
1"=30'

No.	DATE	BY	Description

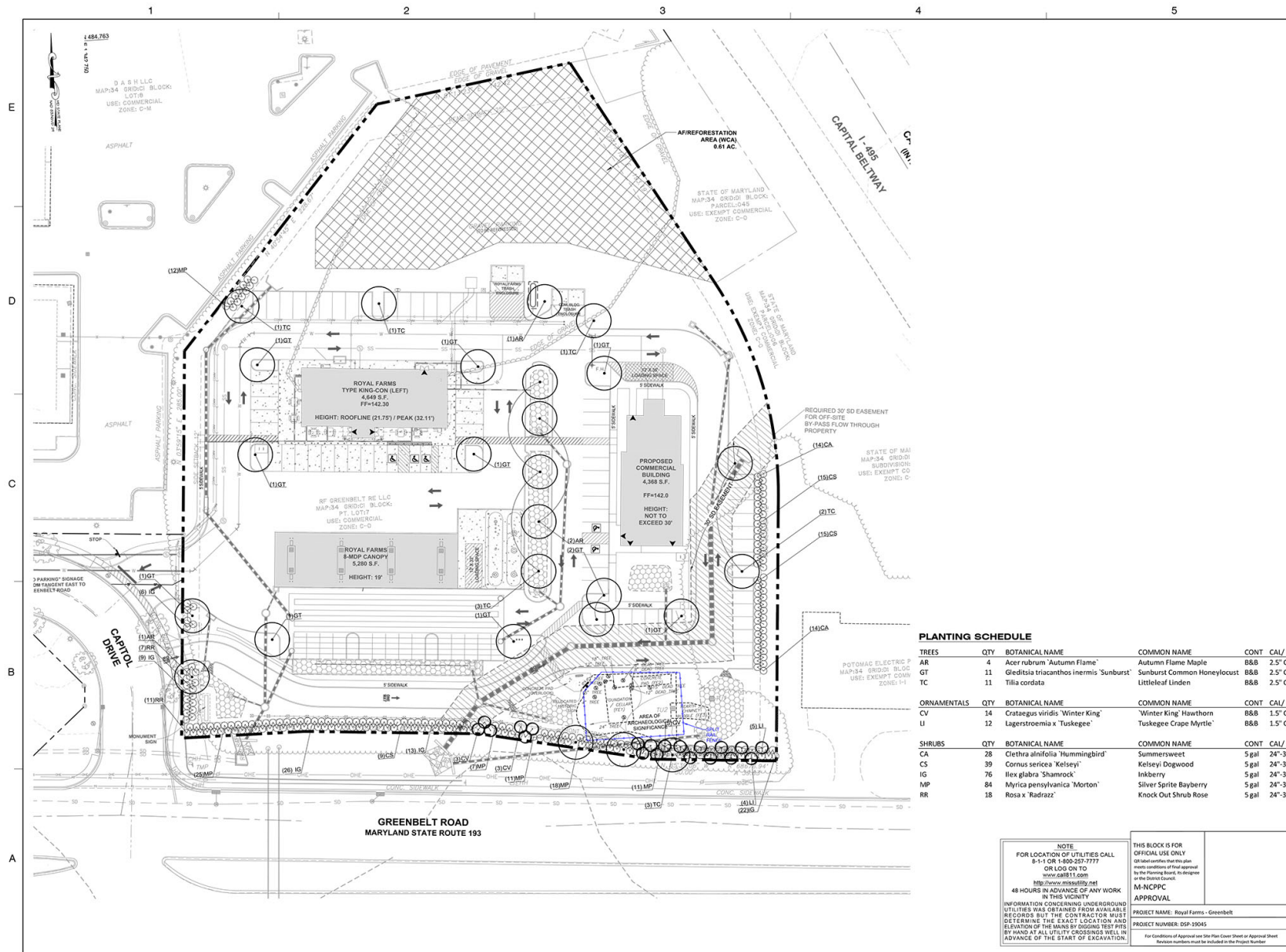
REVISIONS	
DRAWN BY	RW / GRW
APPROVED BY	JMC
CHECKED BY	GRW
DATE	JUNE 2019
TITLE	

DSP-19045
LANDSCAPE PLAN

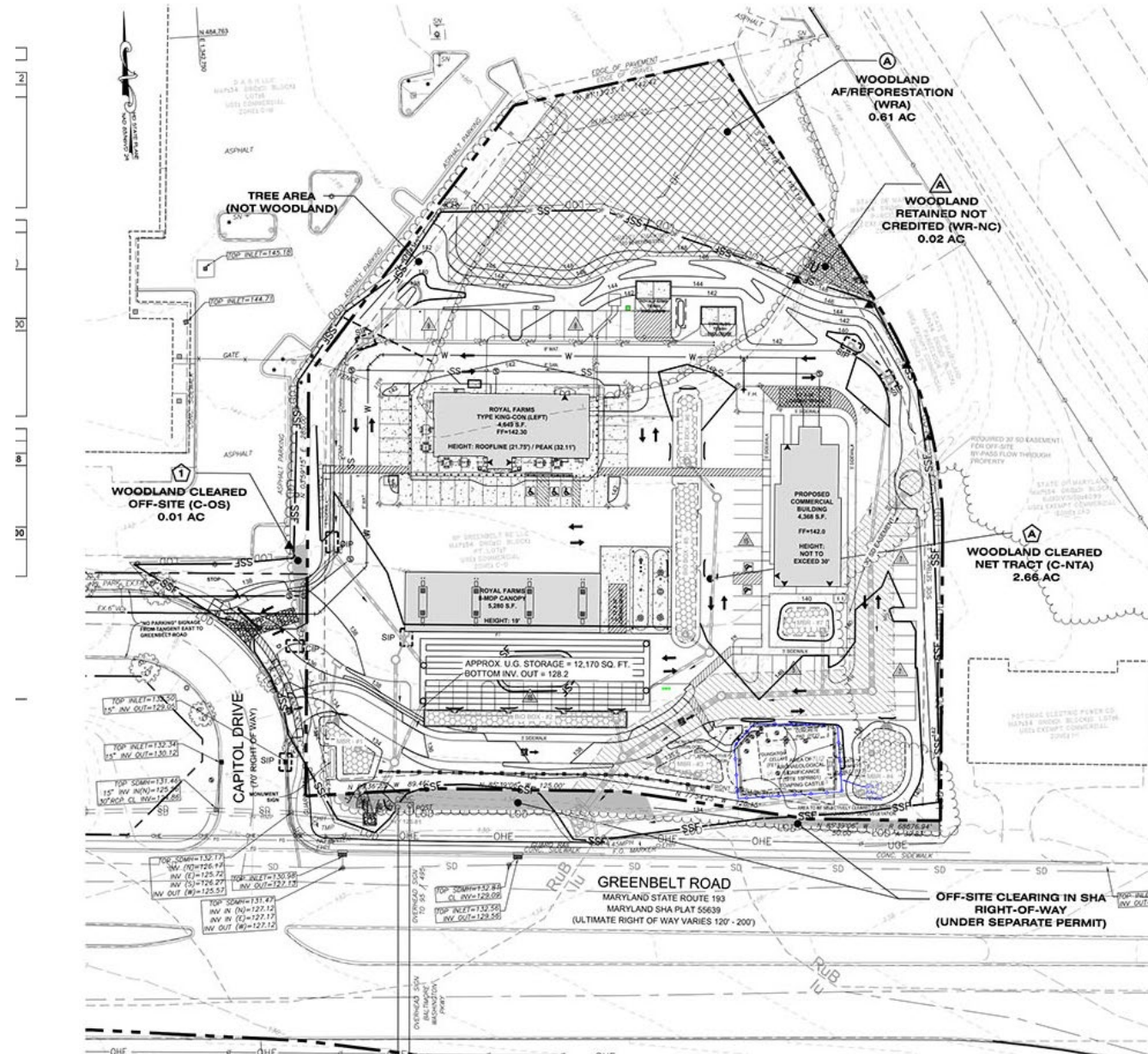
PROJECT NO.	50114074
-------------	----------

6

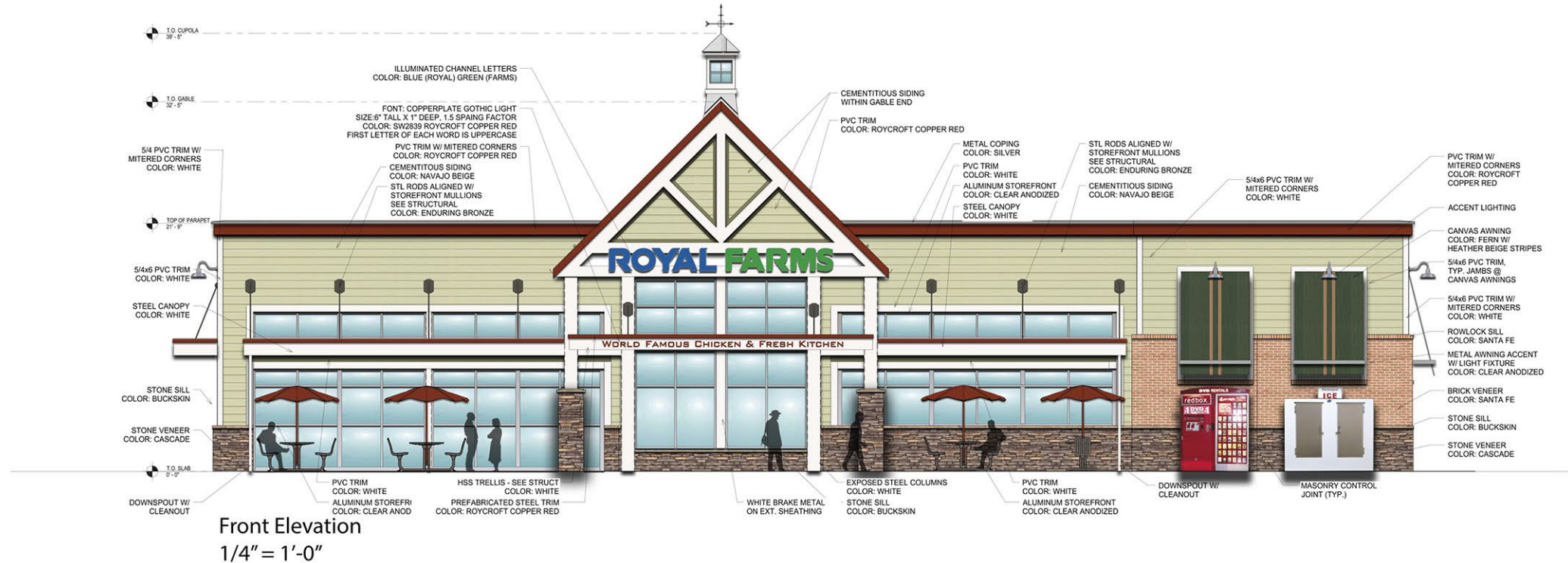
SHEET NO. 6 OF 1



TYPE II TREE CONSERVATION PLAN



FOOD AND BEVERAGE STORE - FRONT ELEVATION



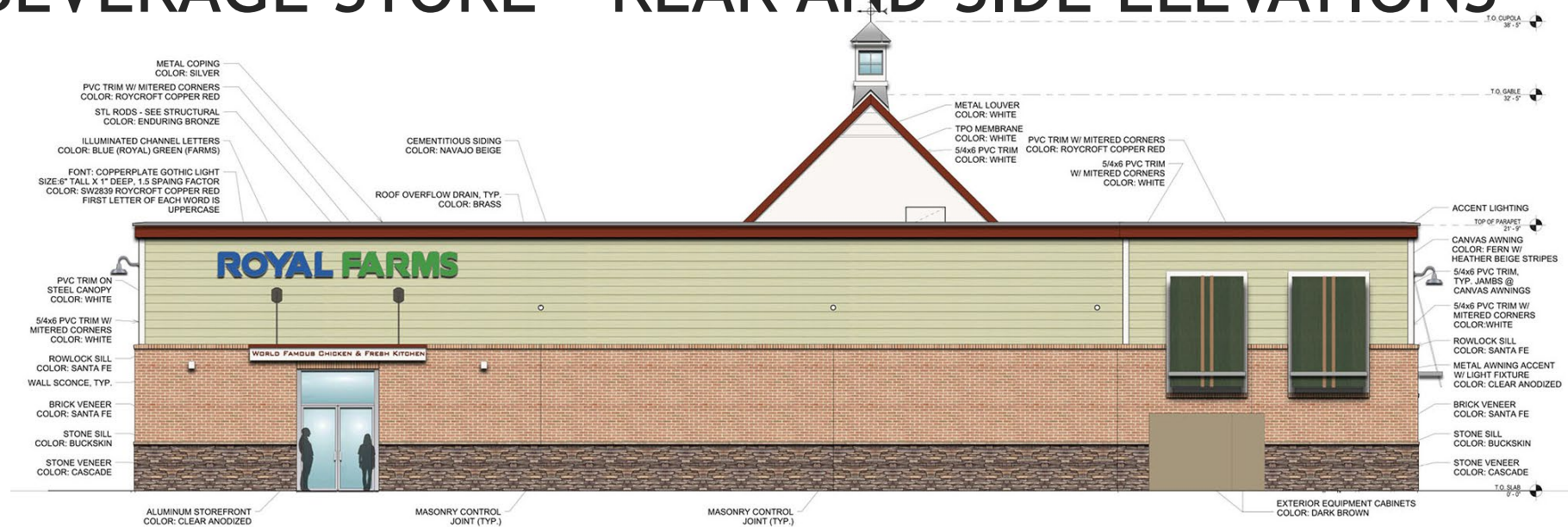
ROYAL FARMS

Royal Farms #213
Greenbelt Road & Capitol Drive, Greenbelt MD
Proposed Elevations
July 12th, 2019

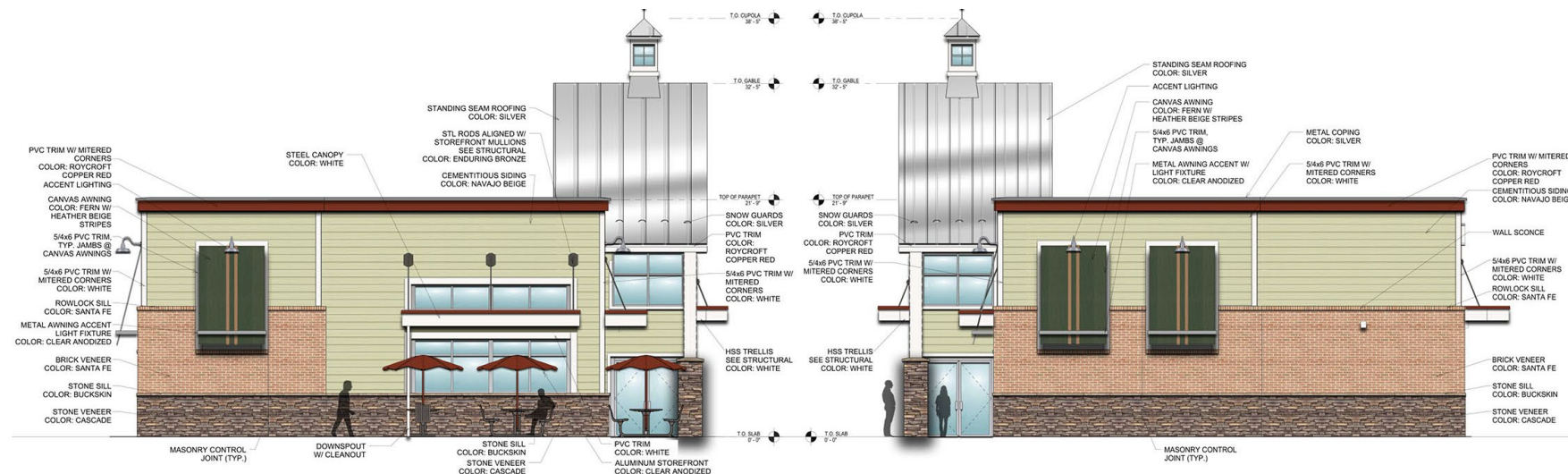
RATCLIFFE
ARCHITECTS

10404 Stevenson Road • Stevenson, Maryland 21153
Phone 410-484-7010 • Fax 410-484-3819 • peter@ratcliffearchitects.com

FOOD AND BEVERAGE STORE - REAR AND SIDE ELEVATIONS



Rear Elevation
1/4" = 1'-0"

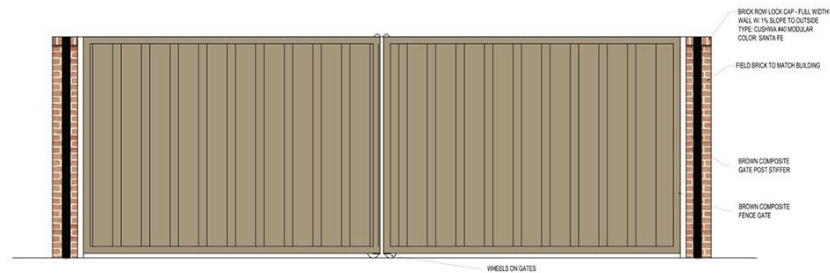


Left Elevation
1/4" = 1'-0"

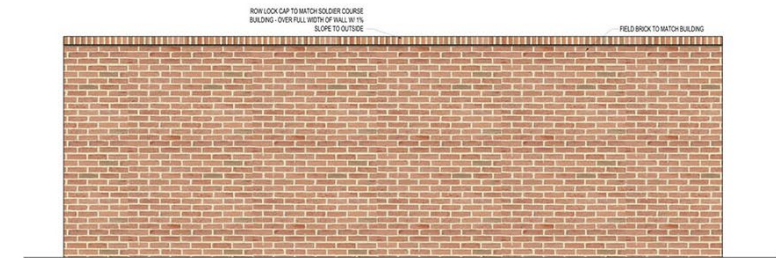
Right Elevation
1/4" = 1'-0"

10/29/2020

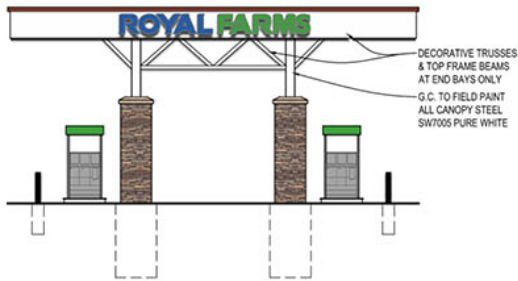
FOOD AND BEVERAGE STORE - DUMPSTER & GAS STATION CANOPY



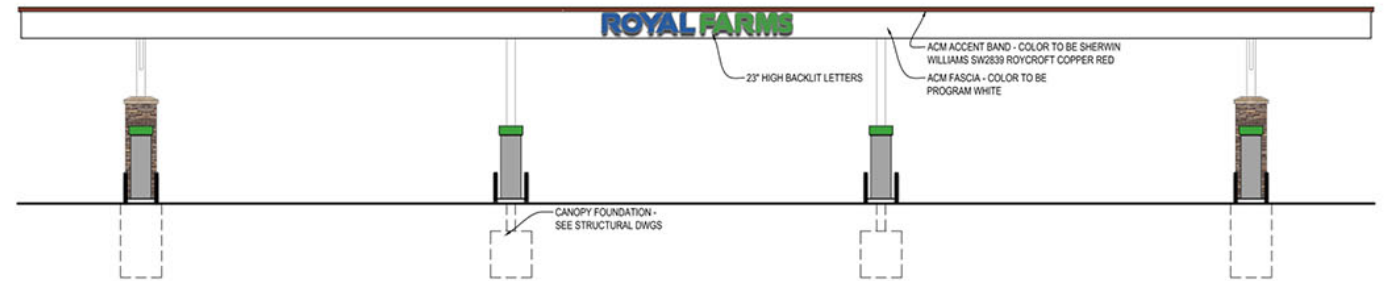
Dumpster Enclosure - Front Elevation
1/2" = 1'-0"



Dumpster Enclosure - Rear Elevation
1/2" = 1'-0"



Fuel Canopy - Side Elevation
1/8" = 1'-0"



Fuel Canopy - Front Elevation
1/8" = 1'-0"

COMMERCIAL BUILDING ELEVATIONS





Dewberry Engineers Inc.
4601 FORBES BOULEVARD, SUITE 300
LANHAM, MD 20706
PHONE: 301.364.1879
CONTACT: MATTHEW SNYDER

DEVELOPER/APPLICANT

RF GREENBELT RE LLC
c/o KLINE SCOTT VISCO
117 W PATRICK STREET, STE 200
FREDERICK, MD 21701
CONTACT: ED SCOTT

ROYAL FARMS - GREENBELT
FORMERLY CAPITOL CADILLAC
PRINCE GEORGE'S COUNTY
GREENBELT, MARYLAND 20770

SEA

KEY PLAN

SCALE

AS SHOWN

No.	DATE	BY	Description

REVISION

DRAWN BY RW / GRW

APPROVED BY _____ JMC

CHECKED BY GRW

DATE JUNE 2019

DSP-19045
DETAIL SHEET
SIGNS

PROJECT NO.	50114074
-------------	----------

9

SHEET NO. 9 OF 1