

ITEMS: 5 & 6

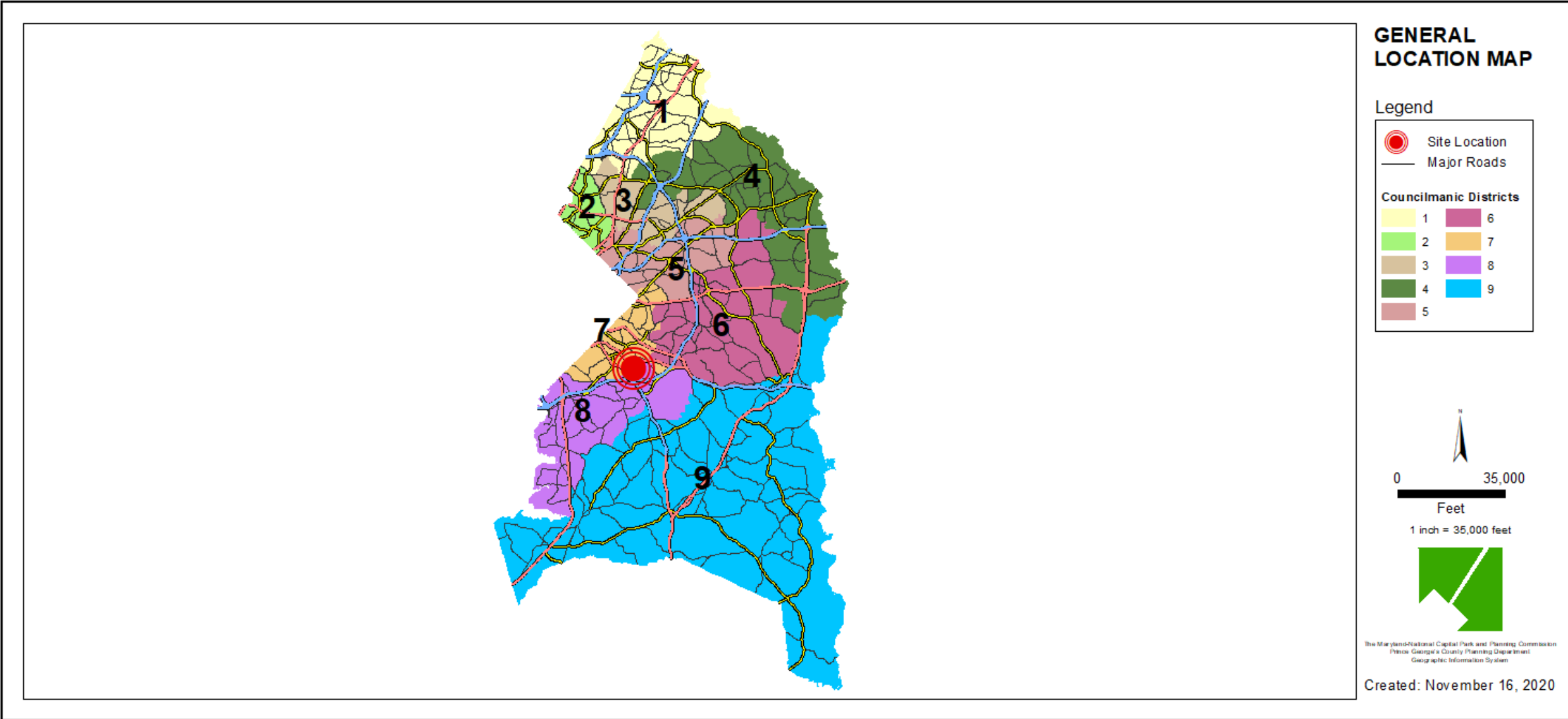
CASE: DSP-20036 & DDS-673

TWO TOWN CENTER (ETOD)

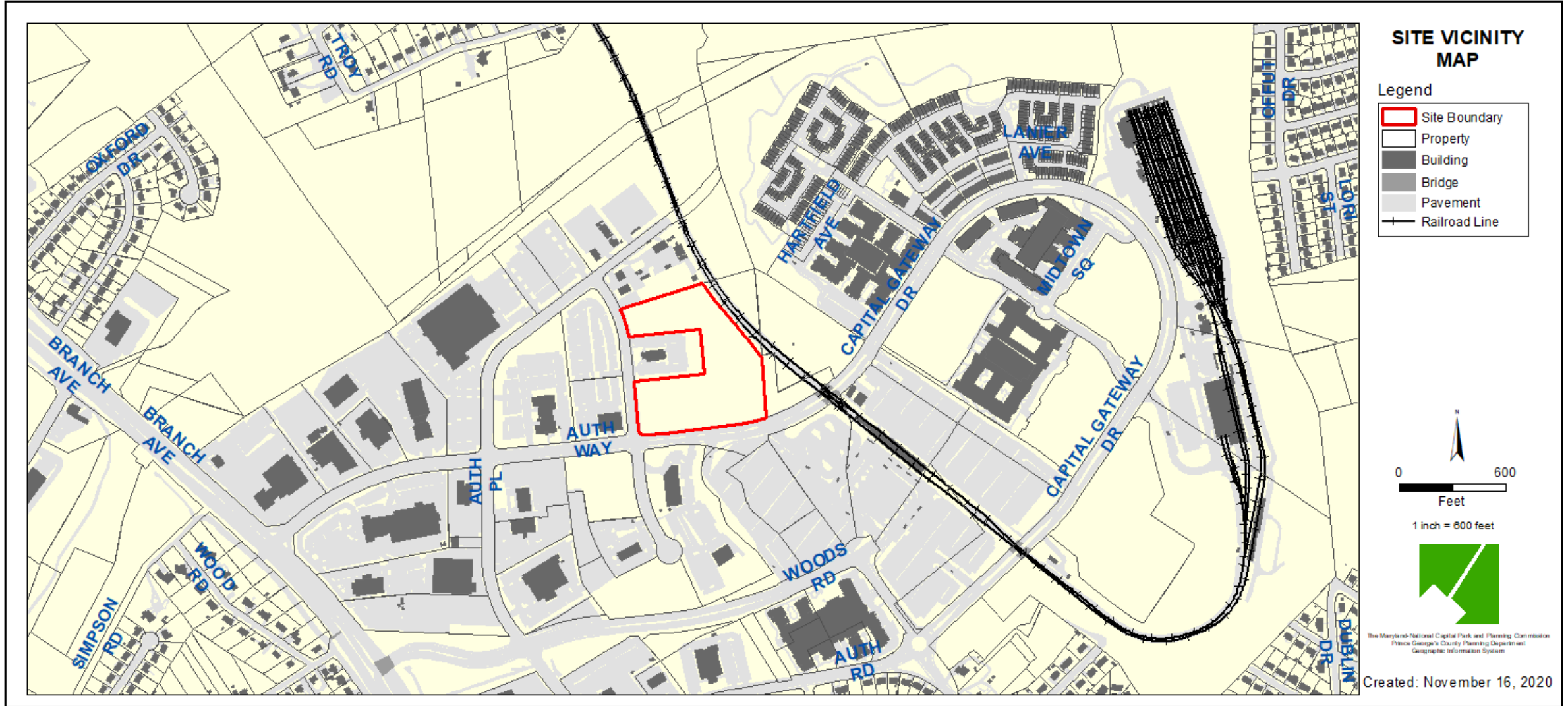
THE PRINCE GEORGE'S COUNTY PLANNING DEPARTMENT



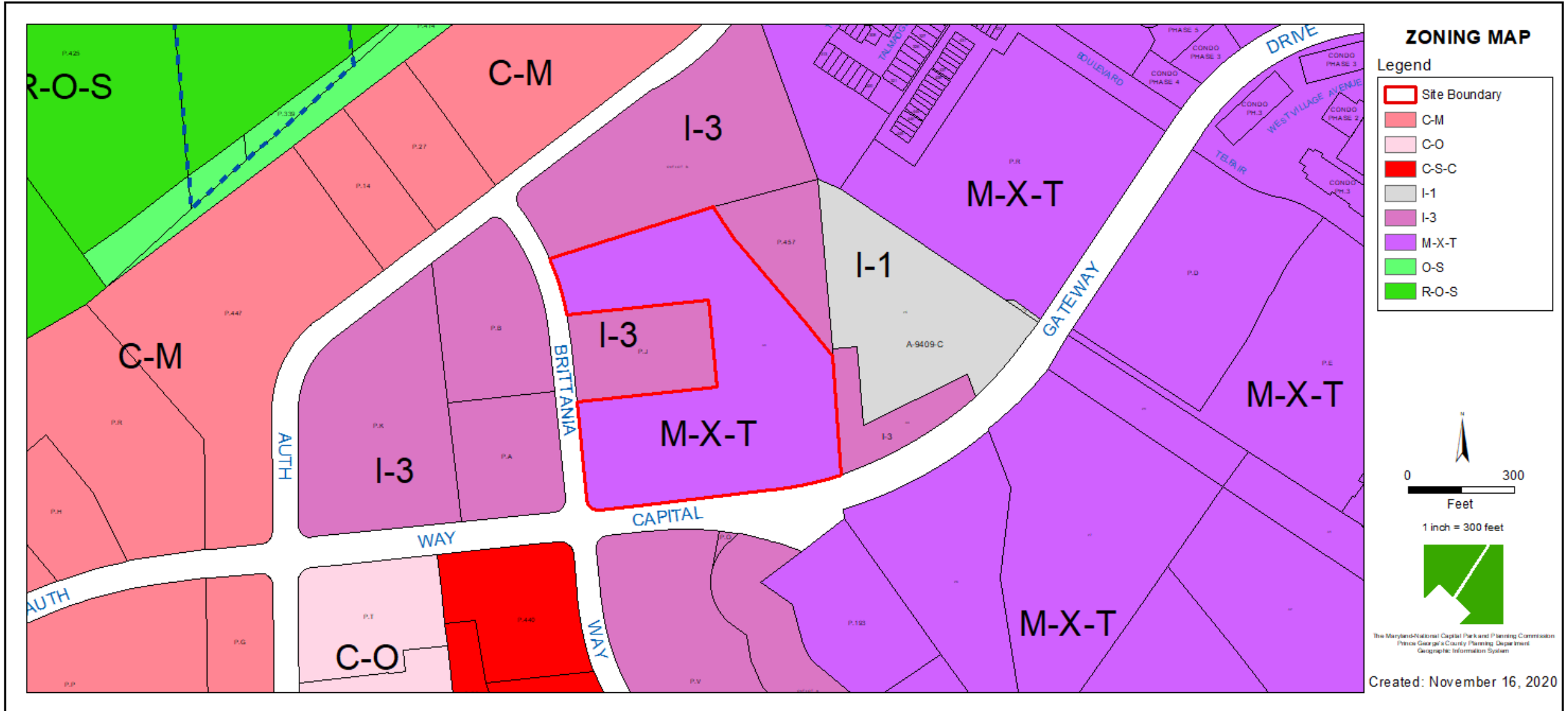
GENERAL LOCATION MAP



SITE VICINITY



ZONING MAP



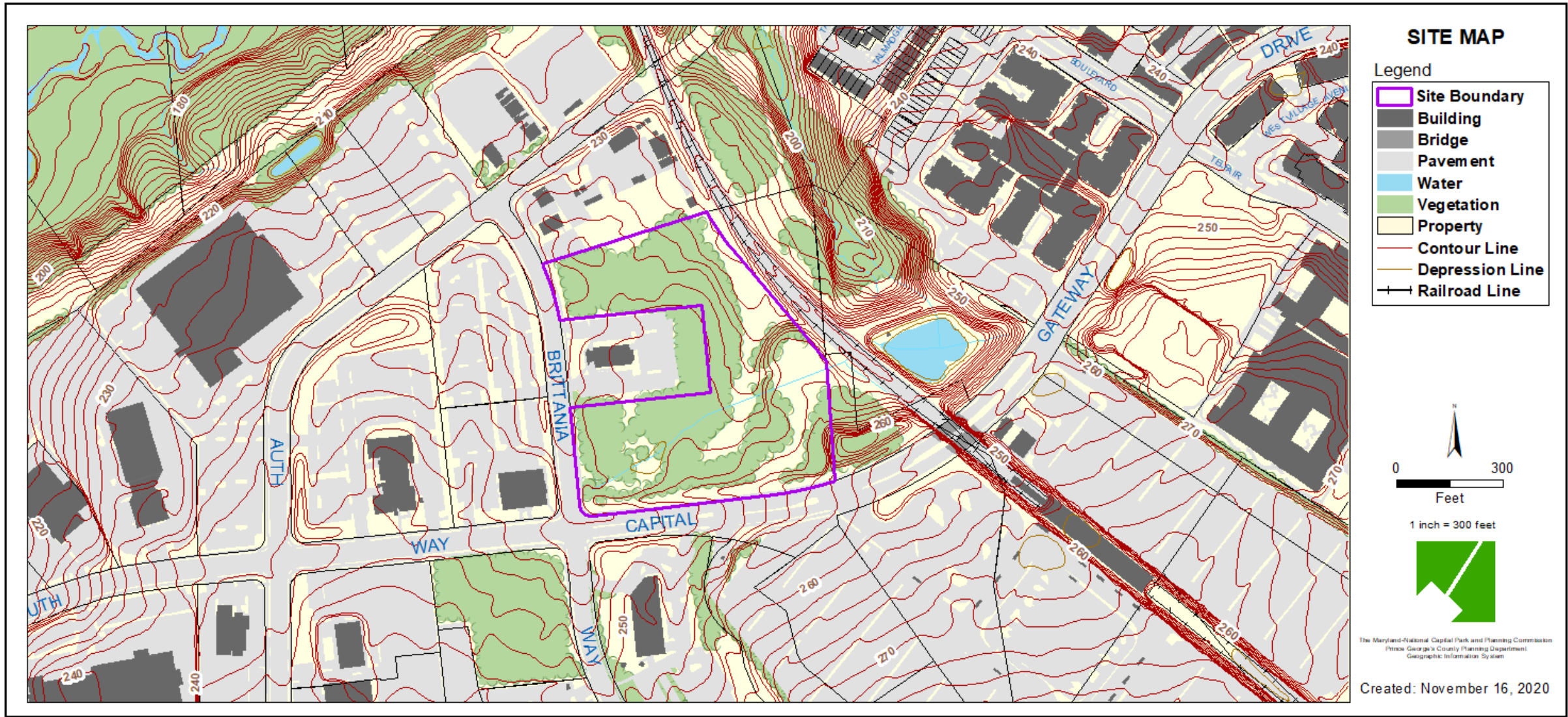
OVERLAY MAP



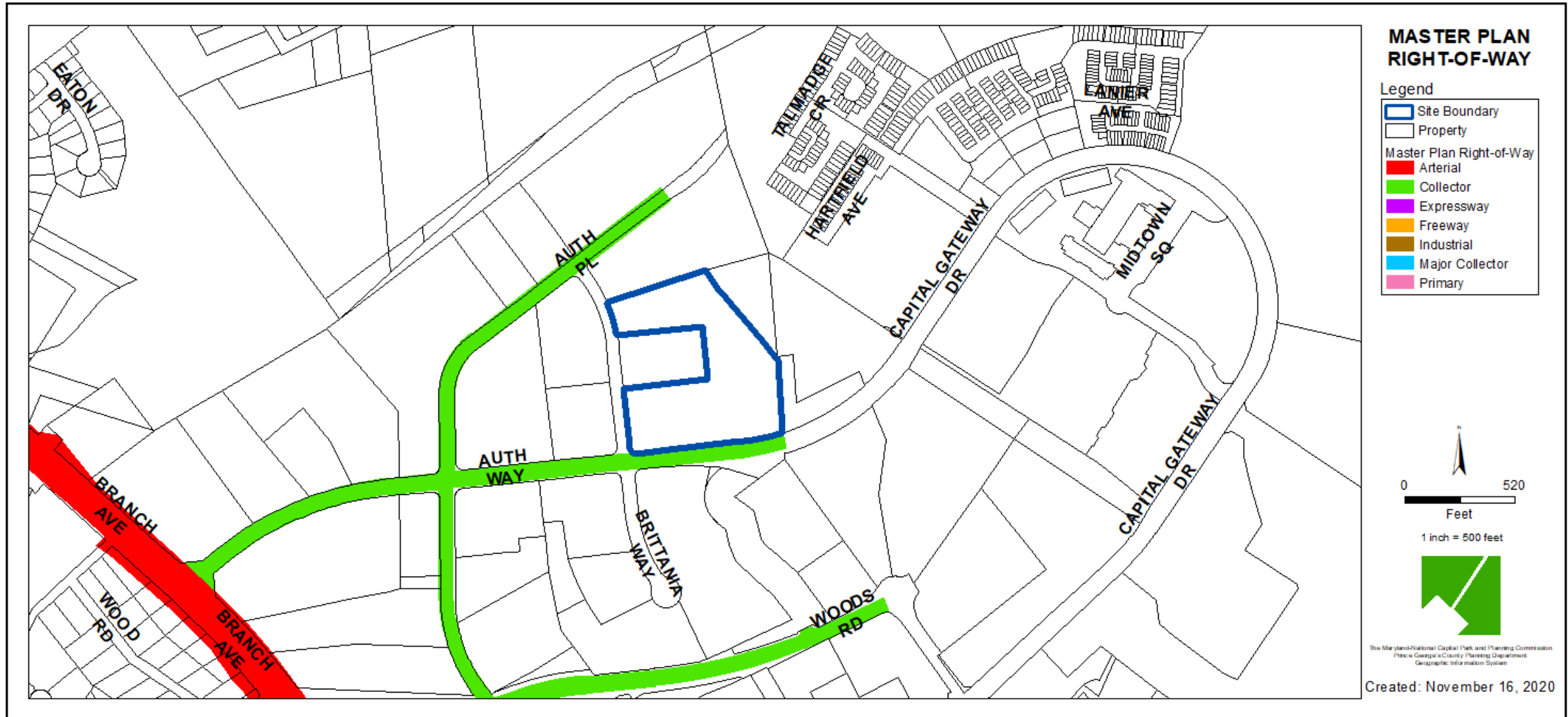
AERIAL MAP



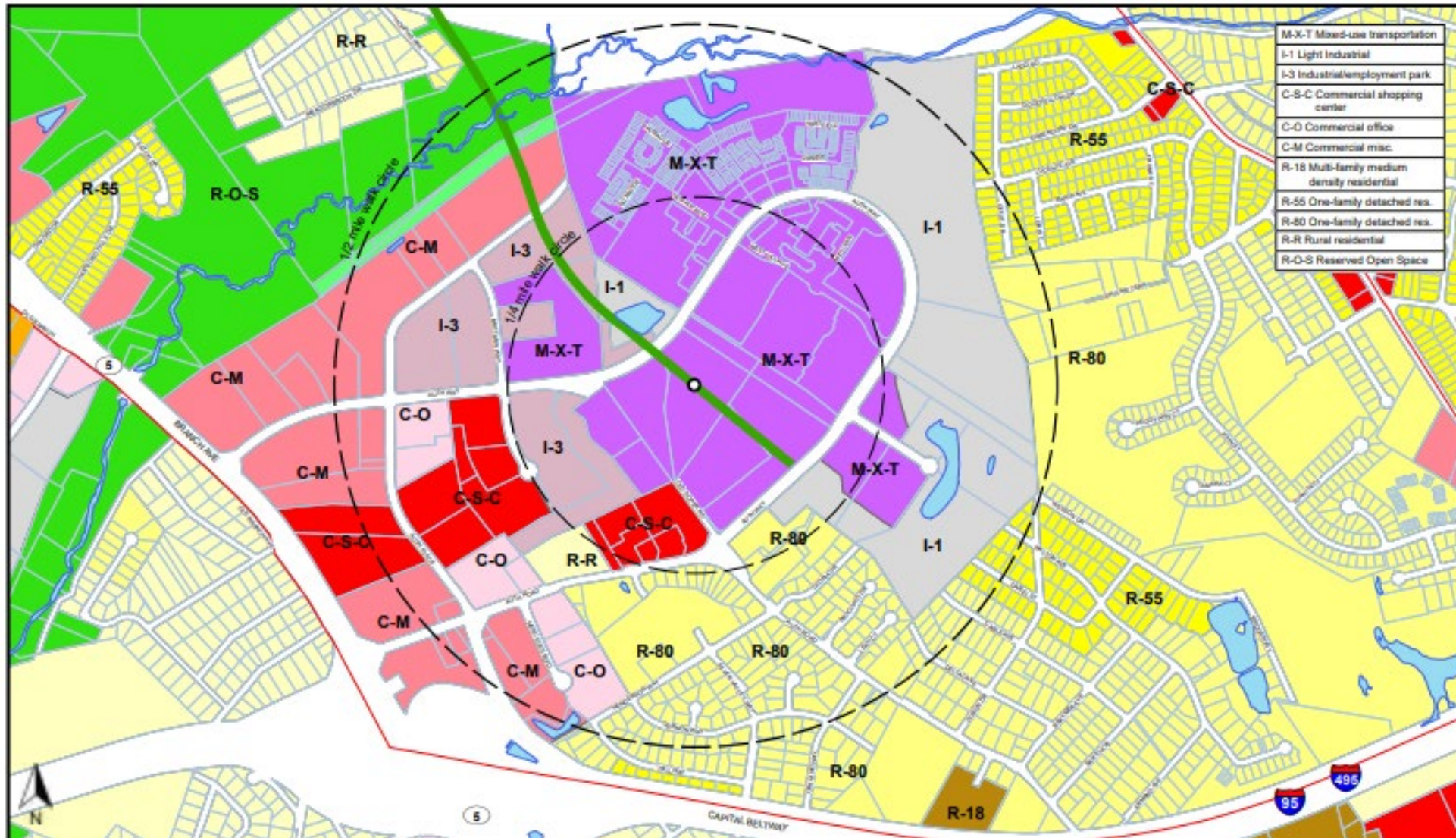
SITE MAP



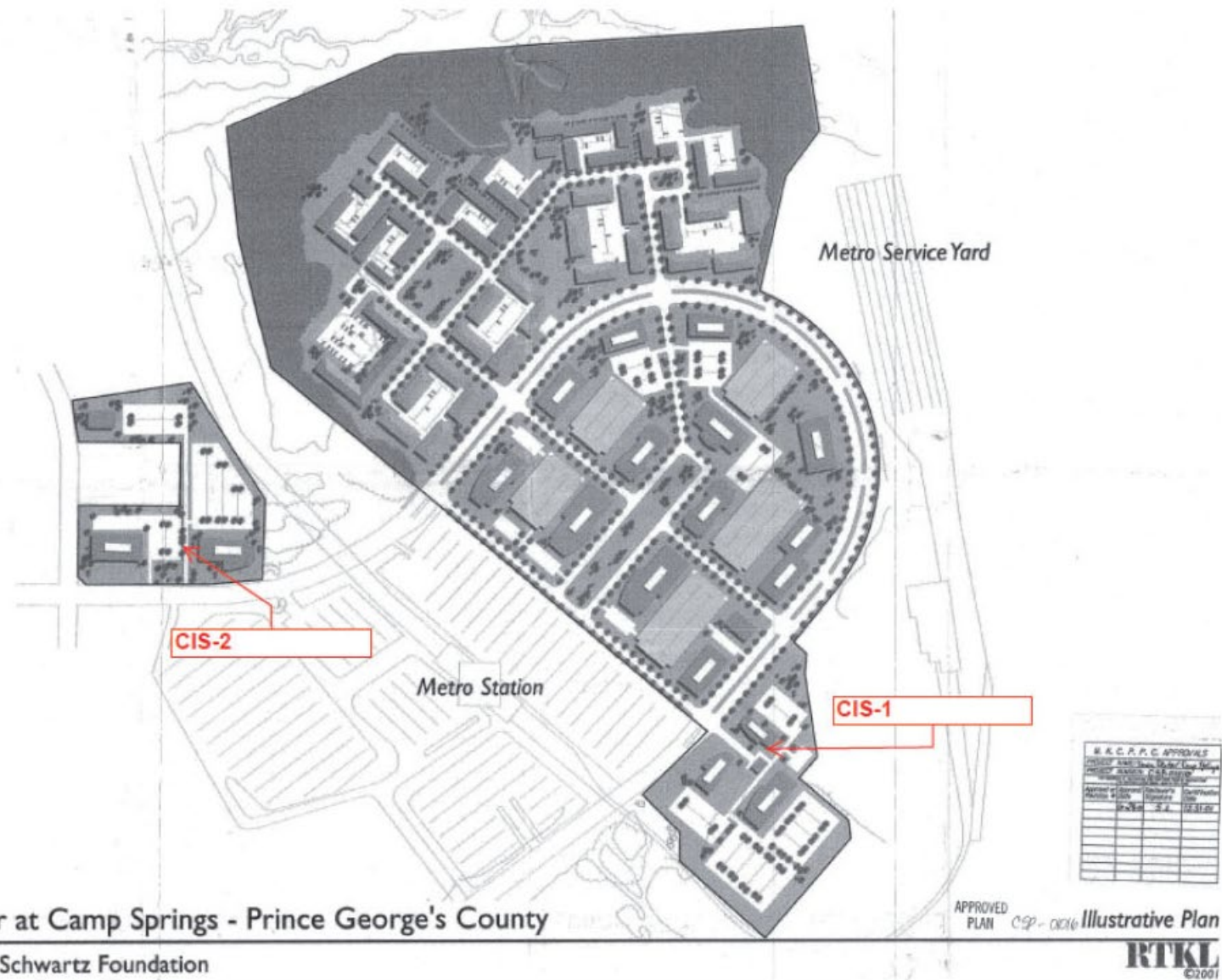
MASTER PLAN RIGHT-OF-WAY MAP



SOUTHERN GREEN LINE SECTOR PLAN - BRANCH AVENUE METRO STATION



TOWN CENTER AT CAMP SPRINGS



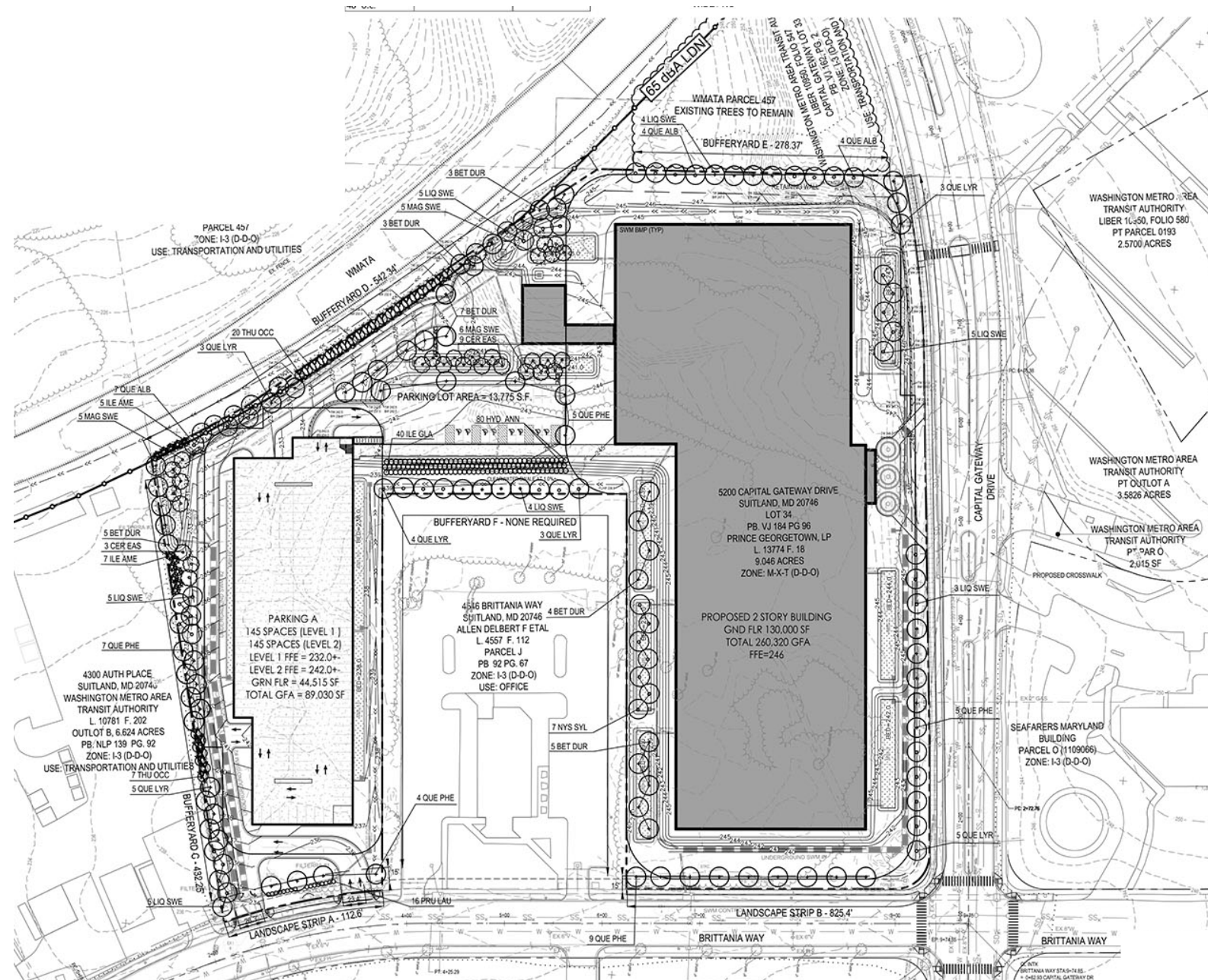
Town Center at Camp Springs - Prince George's County
 The Peter N.G. Schwartz Foundation



BIRD'S-EYE VIEW WITH APPROXIMATE SITE BOUNDARY OUTLINED



LANDSCAPE PLAN



RENDERING



THE APPROVAL BLOCK IS FOR OFFICIAL USE ONLY

Official certifies that this plan meets conditions of final approval by the Planning Board, its designee or the District Council.

M-NCPPC APPROVAL

PROJECT NAME: Two Town Center at Camp Springs

PROJECT NUMBER: DSP-20036

For Conditions of Approval see the Plan Cover Sheet or Approval Sheet. Approval is void if not included on the Plan Number.

TWO TOWN CENTER
 PRINCE GEORGE'S COUNTY, MD | August 13, 2020
 ©2020 | Shalom Baranes Associates, PC

ENTRANCE RENDERING FROM SOUTHEAST

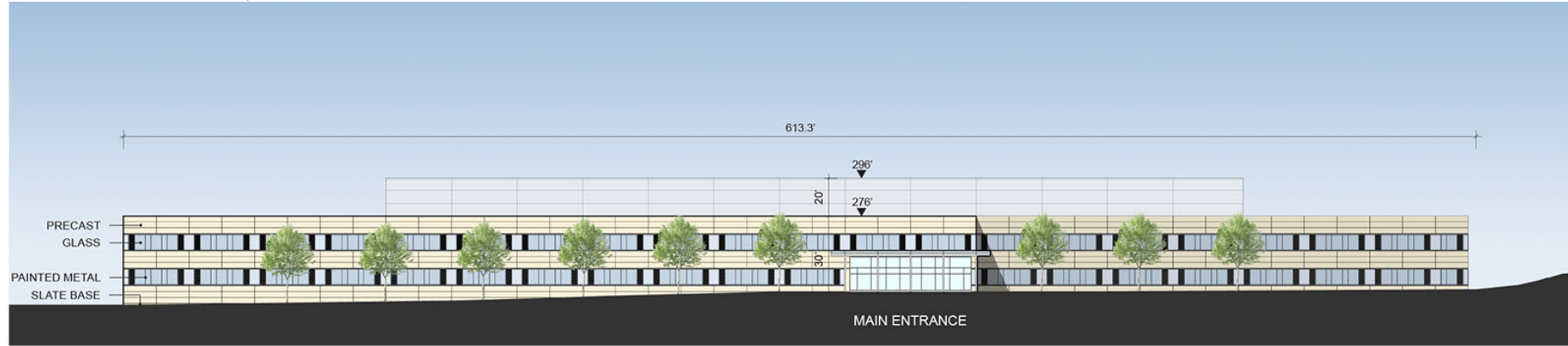


RENDERING

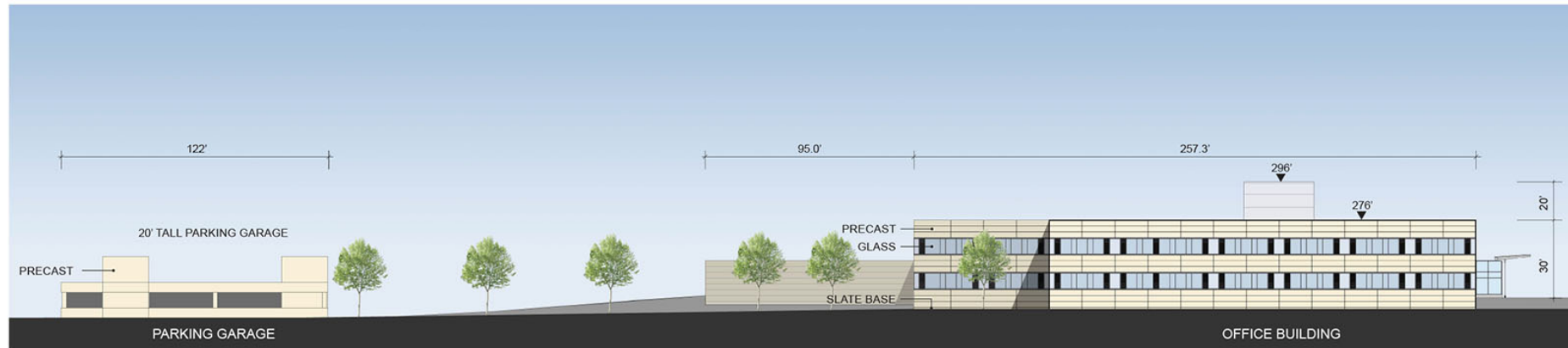


Perspective Rendering of 5200 Capital Gateway Drive.

ELEVATIONS, SOUTH AND WEST



01 | OFFICE BUILDING - SOUTH ELEVATION



02 | OFFICE BUILDING - WEST ELEVATION

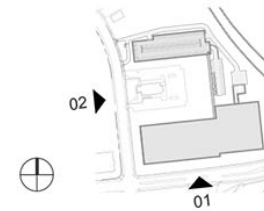
THIS APPROVAL BLOCK IS FOR OFFICIAL USE ONLY. All other conditions shall be per the conditions of the approval by the Planning Board, its designee or the District Council.

M-NCPPC APPROVAL

PROJECT NAME: Two Town Center at Camp Springs

PROJECT NUMBER: DSP-20036

For Conditions of Approval see Site Plan Cover Sheet or Approval Sheet. Please refer to the applicable sections of the Planning Code.



TWO TOWN CENTER
 PRINCE GEORGE'S COUNTY, MD | October 12, 2020
©2020 | Shalom Baranes Associates, P.C.

shalom baranes associates | Peter N.G. Schwartz Company



ELEVATIONS, NORTH AND EAST



03 | OFFICE BUILDING - NORTH ELEVATION



04 | OFFICE BUILDING - EAST ELEVATION

THIS APPROVAL BLOCK IS FOR OFFICIAL USE ONLY

DR shall verify that this date meets specifications of that approved by the Planning Board, to the extent of the Board's jurisdiction.

M-NCPPC APPROVAL

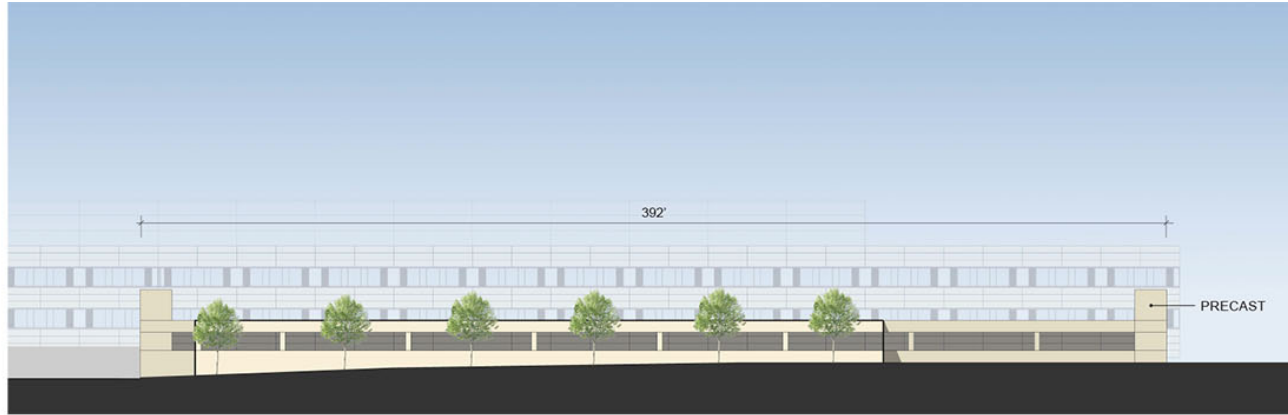
PROJECT NAME: Two Town Center at Camp Springs

PROJECT NUMBER: DSP-20036

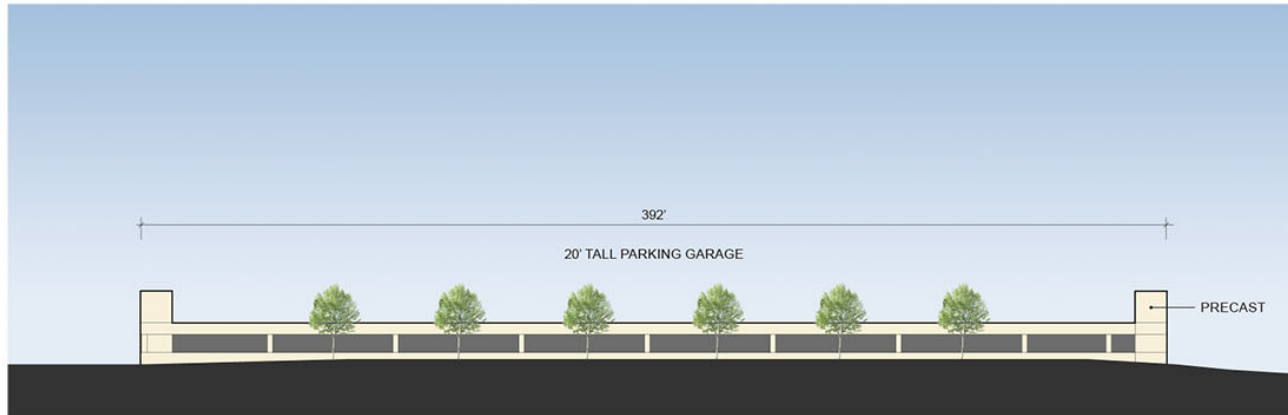
For Conditions of Approval use the Plan Cover Sheet or Approval Sheet. Approval conditions shall be included on the Approval Sheet.



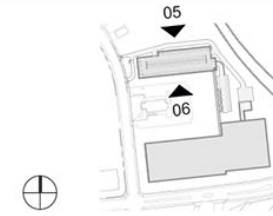
PARKING GARAGE ELEVATIONS



05 | PARKING GARAGE - NORTH ELEVATION



06 | PARKING GARAGE - SOUTH ELEVATION



THIS APPROVAL BLOCK IS FOR OFFICIAL USE ONLY

DRD also certifies that this plan meets the conditions of final approval by the Planning Board, to the degree of the Council's Consent.

M-NCPPC APPROVAL

PROJECT NAME: Two Town Center at Camp Springs
PROJECT NUMBER: DSP-20036
For Conditions of Approval see Site Plan Cover Sheet or Figure 20 and Resolution and Plans included herewith as a part of this application.