

4100 LAUREL ROAD PROPERTY

Detailed Site Plan

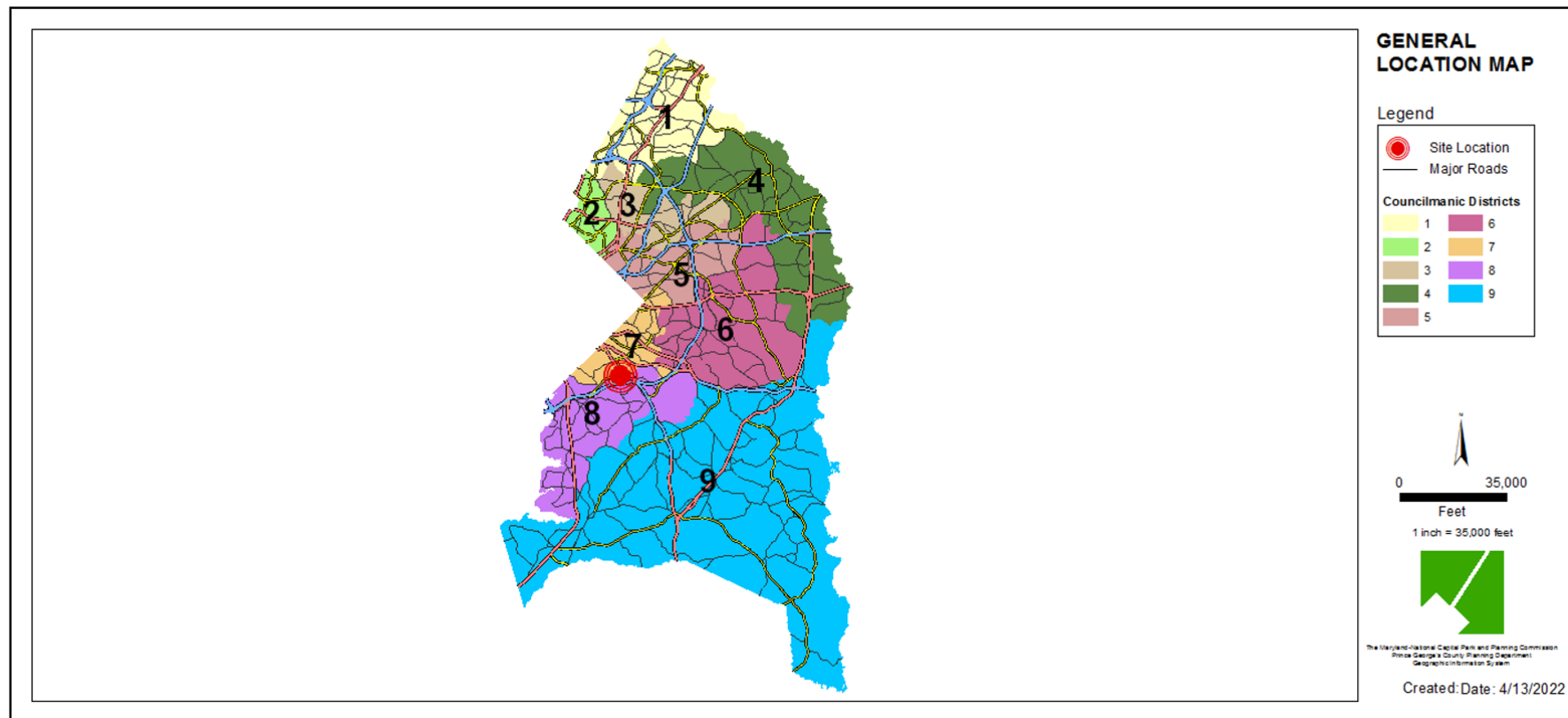
Staff Recommendation: APPROVAL with conditions



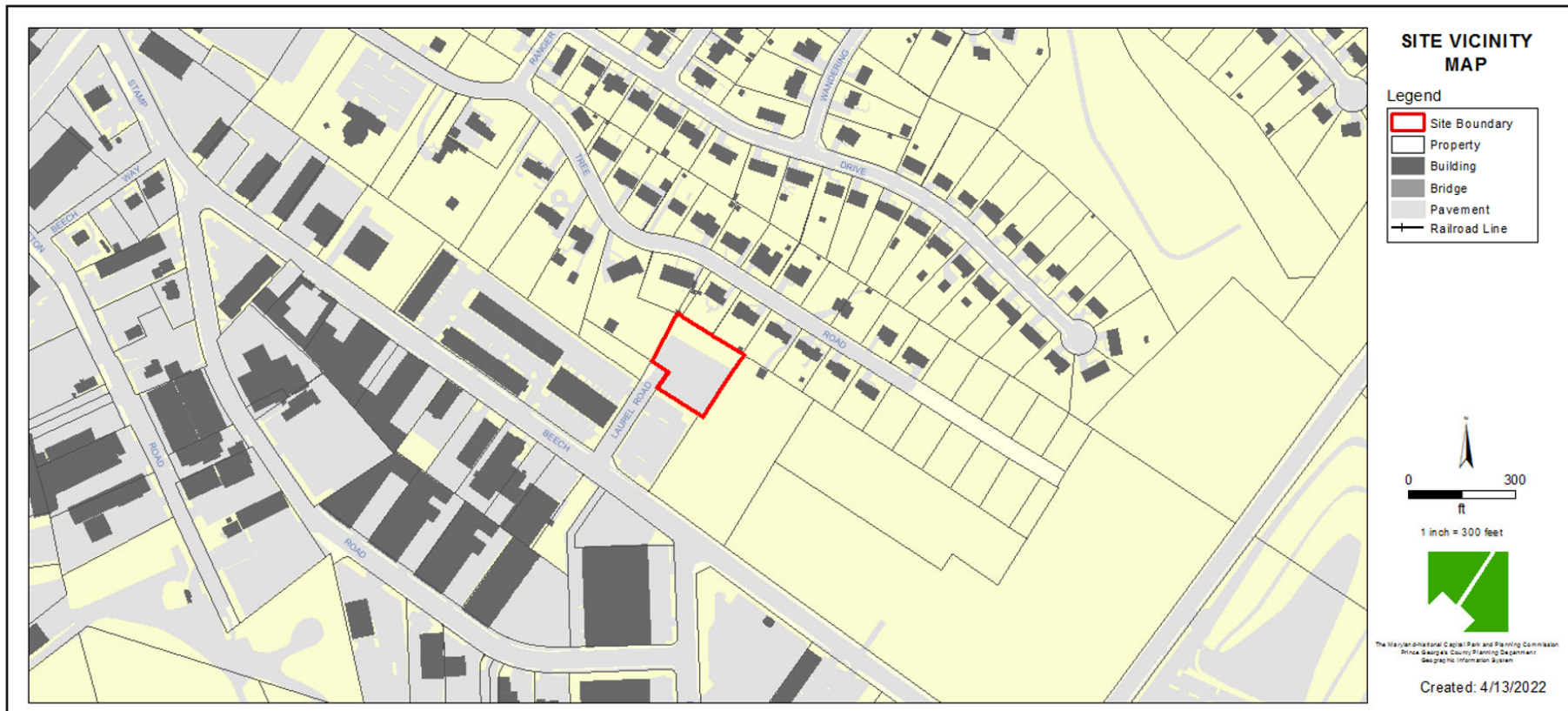
GENERAL LOCATION MAP

Council District: 07

Planning Area: 76A



SITE VICINITY MAP

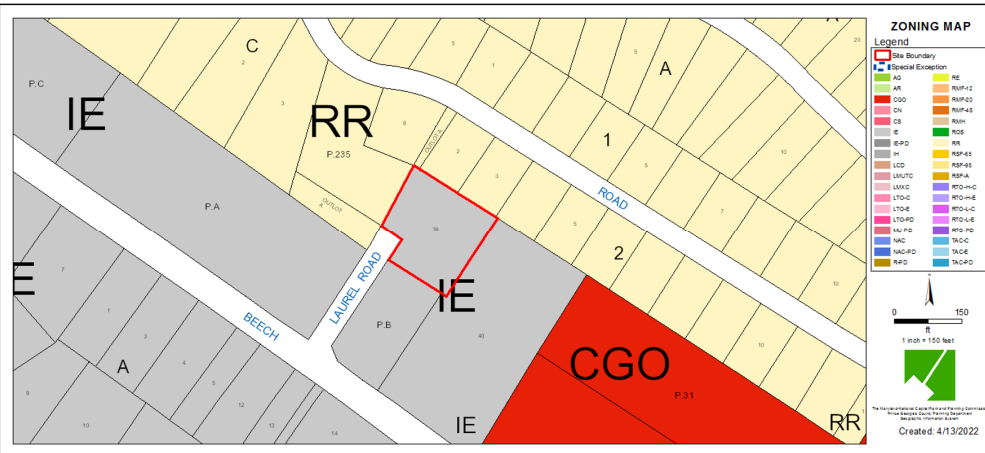


NEW & PRIOR ZONING MAP

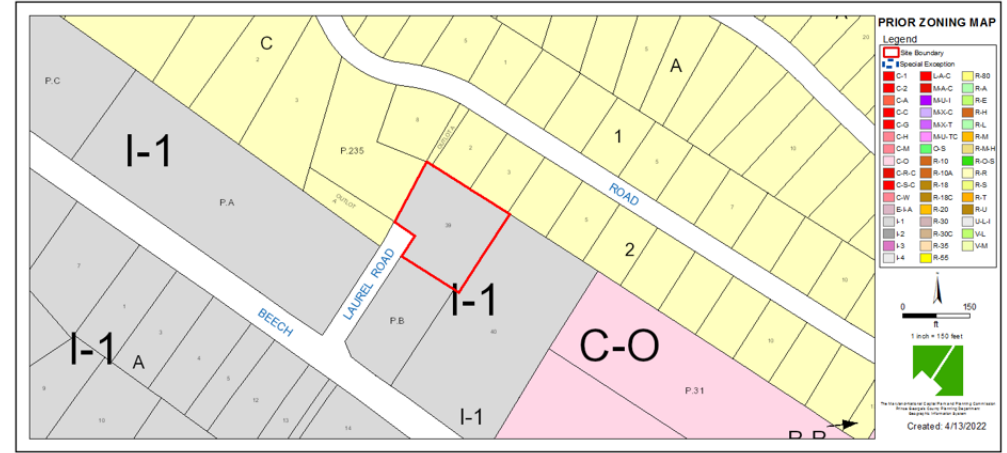
Property Zone: IE

Prior Zone: I-1

NEW

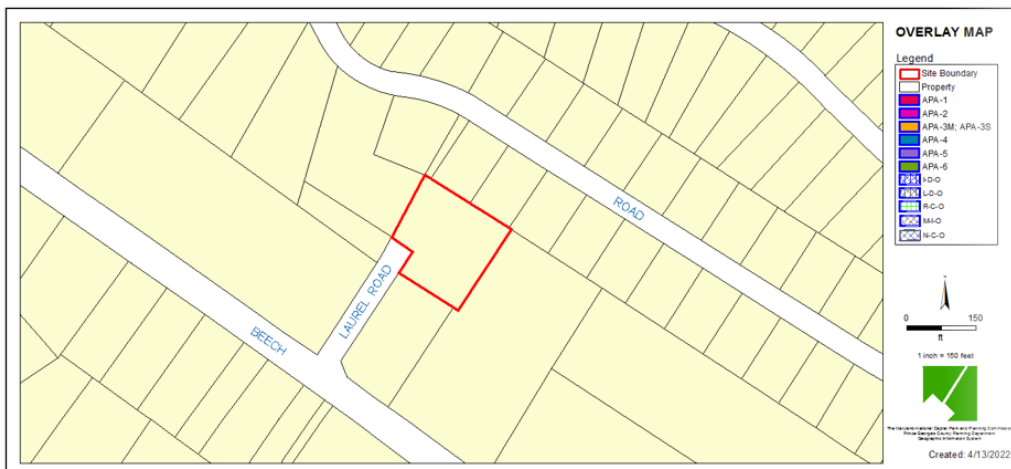


PRIOR



NEW & PRIOR OVERLAY MAP

NEW



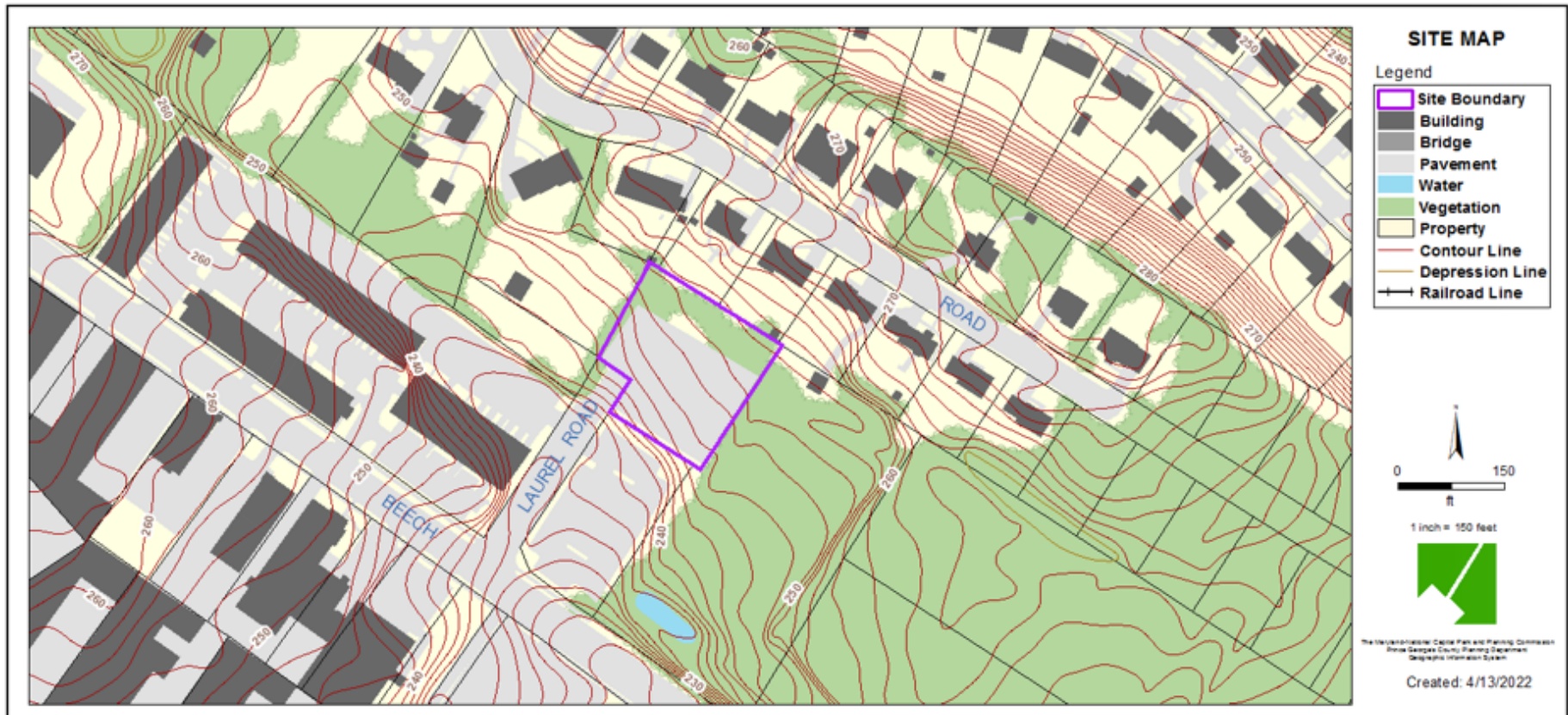
PRIOR



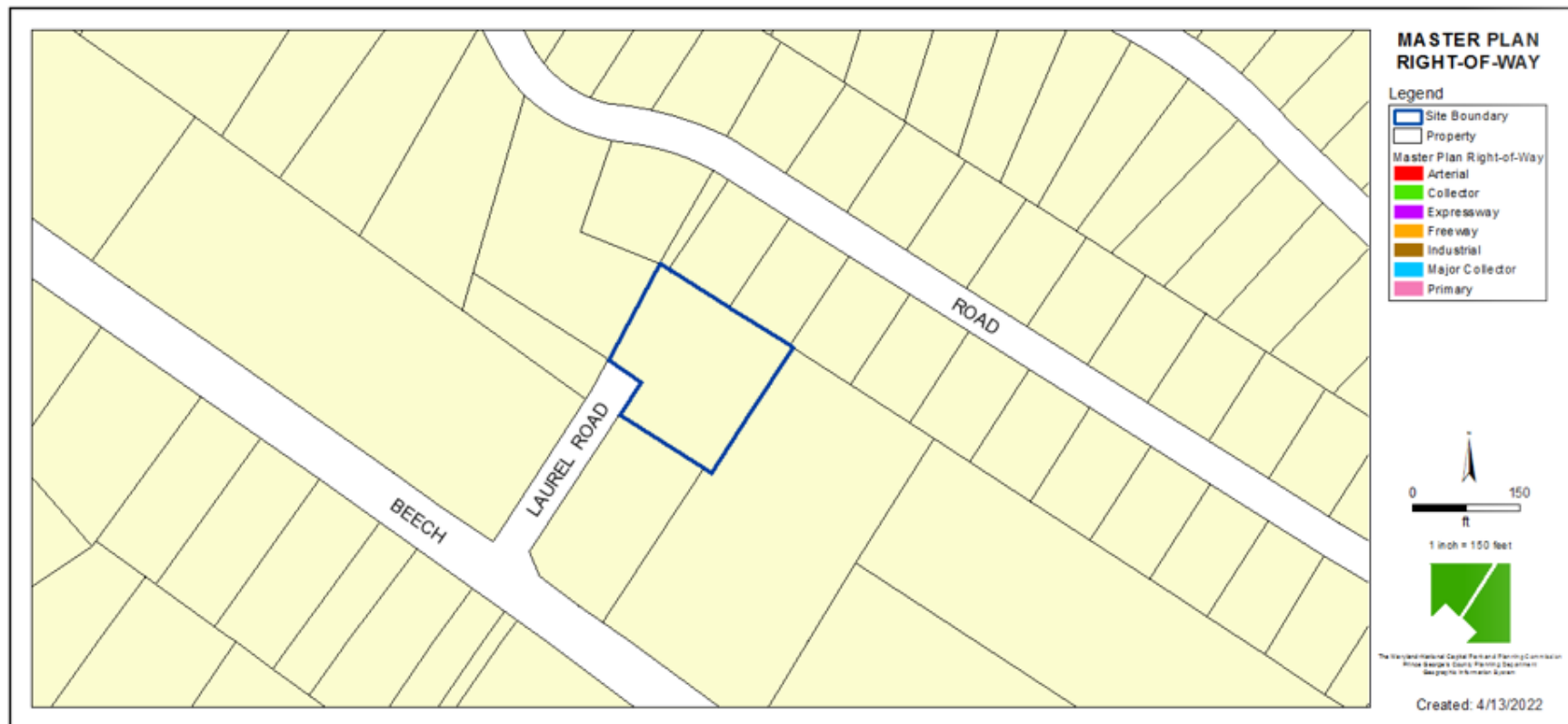
AERIAL MAP



SITE MAP



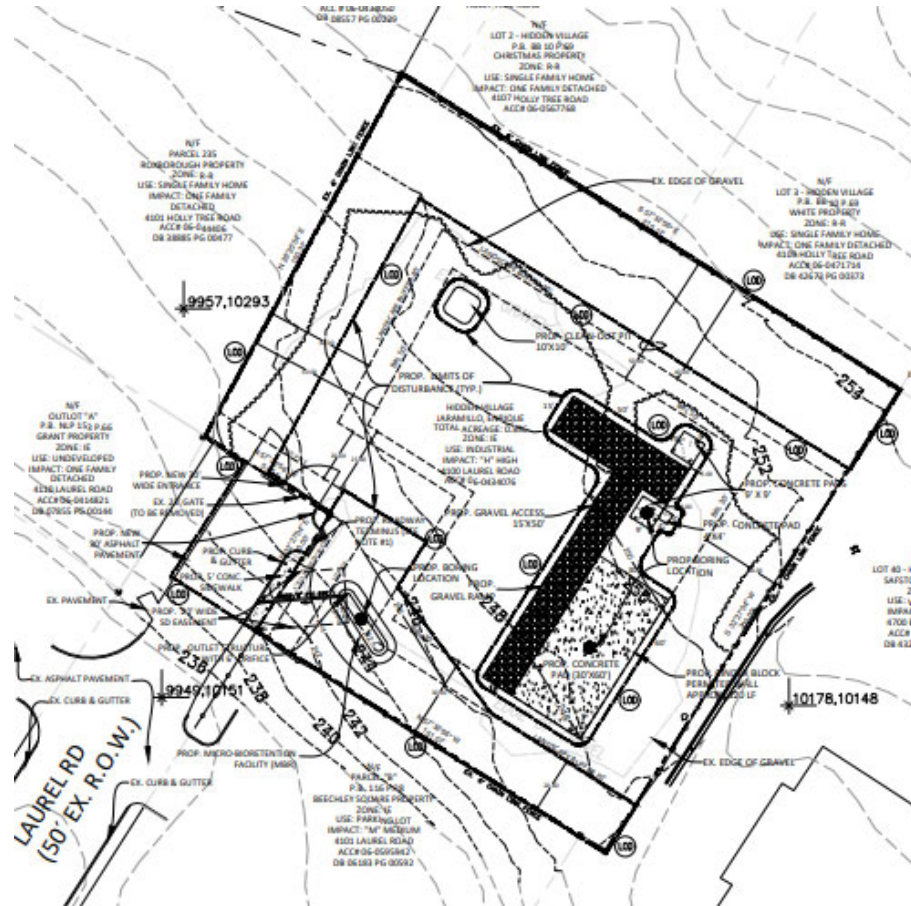
MASTER PLAN RIGHT-OF-WAY MAP



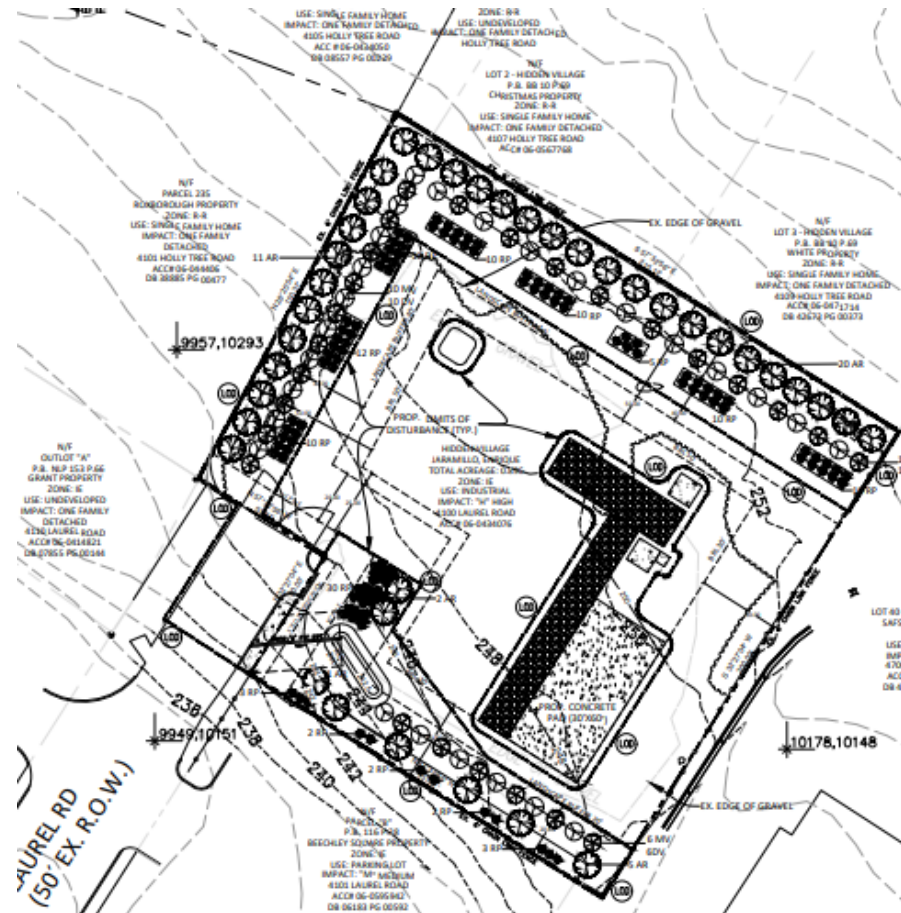
BIRD'S-EYE VIEW WITH APPROXIMATE SITE BOUNDARY OUTLINED



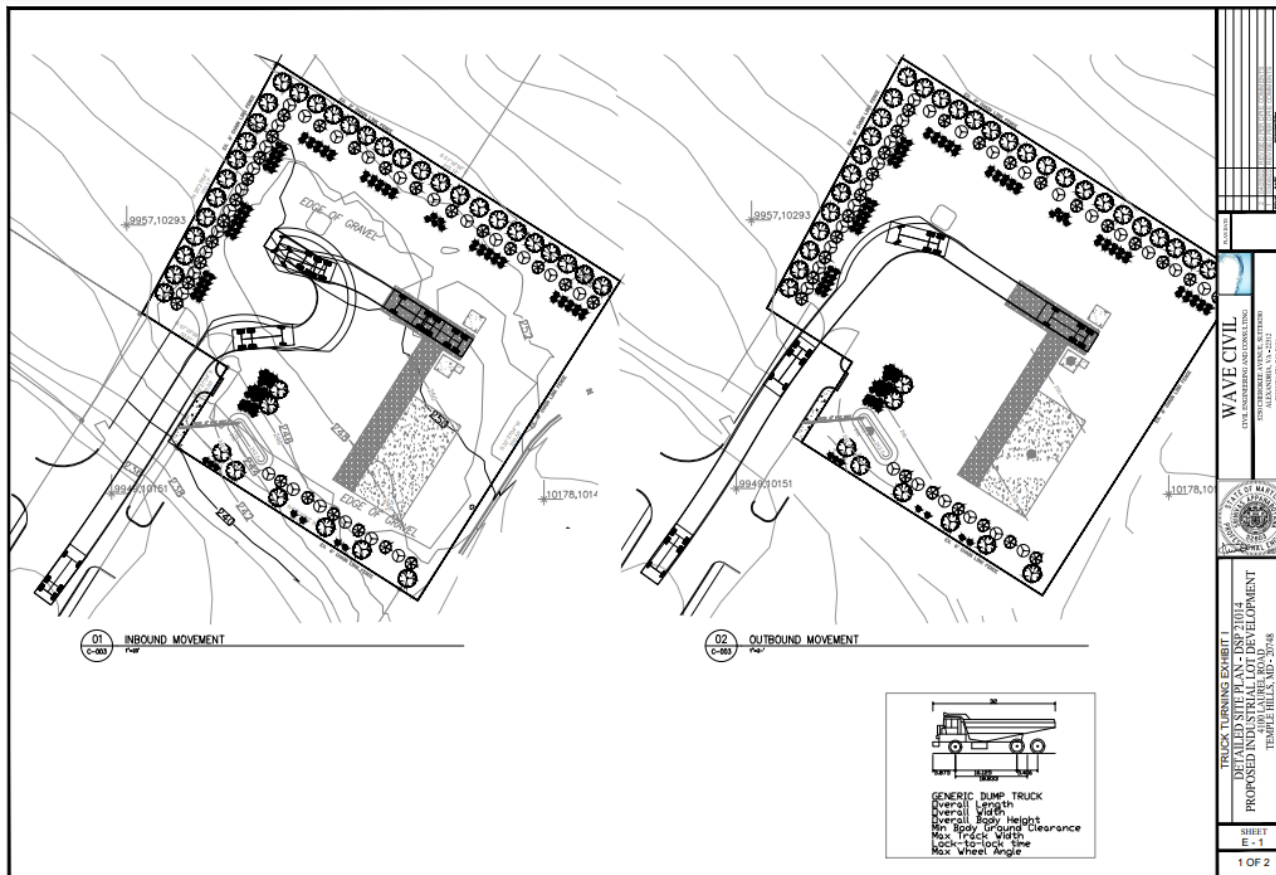
DETAILED SITE PLAN



LANDSCAPE PLAN




TRUCK TURNING EXHIBIT



350 BARREL ROUND PORTABLE SILO

350 Barrel Round Portable Silo



350 Barrel Round Portable Silo

- 8'-6" Diameter x 38'-0" Overall Height
- Positive Feed Drive Auger System
- 9" Diameter Screw x 17'-0"
- 10 HP Motor and Gear Box Drive
- Heavy Duty Dual Axle Trailer and Tires
- Electric Brakes and Lights Package
- 150 Sq. Ft. Bag Area Dust Collector with Air Vibrator
- Pressure Relief Valve
- Single Speed Trailer Jack
- 13'-6" Auger Discharge Height
- Outside Ladder with OSHA Compliant Fall Arrest Cable System
- 4" Fill Pipe with Aluminum Adapter
- 18" Non-Pressurized Inspection Manhole
- (8) Externally Mounted Air Pads with Manifold, Regulator, and Check Valve
- Sandblast, Prime, and Paint
- Standard Colors:
RAL 7038 Gray, RAL 9010 White,
RAL 1001 Tan, RAL 1032 Yellow

Options

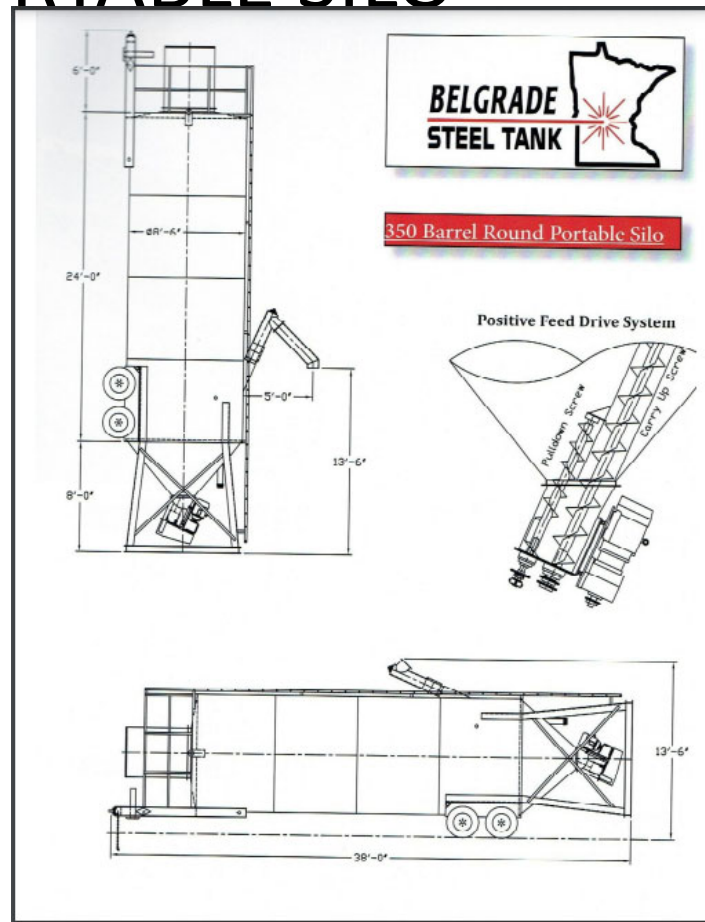
- 225 Sq. Ft. Dust Collector
- 330 Sq. Ft. Pulse Jet Dust Collector
- Bin Level Indicators
- Single Phase Motor
- Hydraulic Drive Motor
- Motor Starter Controls
- Manual Air Valve Controls
- Upgrade to 12" Screw Conveyor
- 5" Fill Pipe

Specifications

- Empty Weight 10,000#
- Hitch Weight 2,100#
- 1,400 Cu. Ft. Capacity
- 65 Ton Capacity (Cement)
- Output Capacity Approximately 15 Cu. Ft. Per Minute (9" Screw Conveyor)
- Part Number: BST350P-RD-EB

28 BELGRADESTEELTANK.COM

DIAGRAM OF PORTABLE SILO



STAFF RECOMMENDATION

APPROVAL with conditions

Minor Issues:

- Technical corrections

Applicant Community Engagement:

- N/A