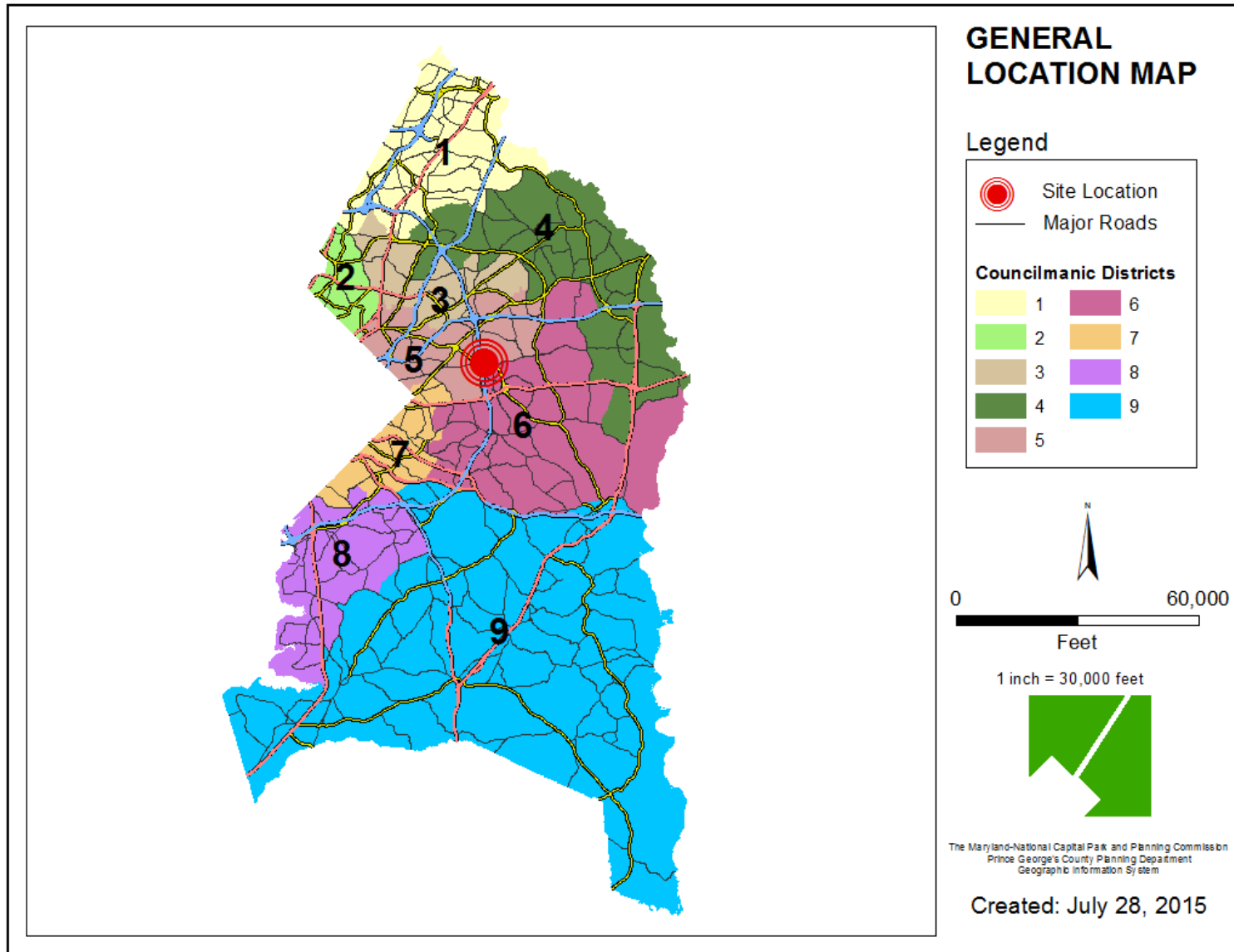


ITEM: 8

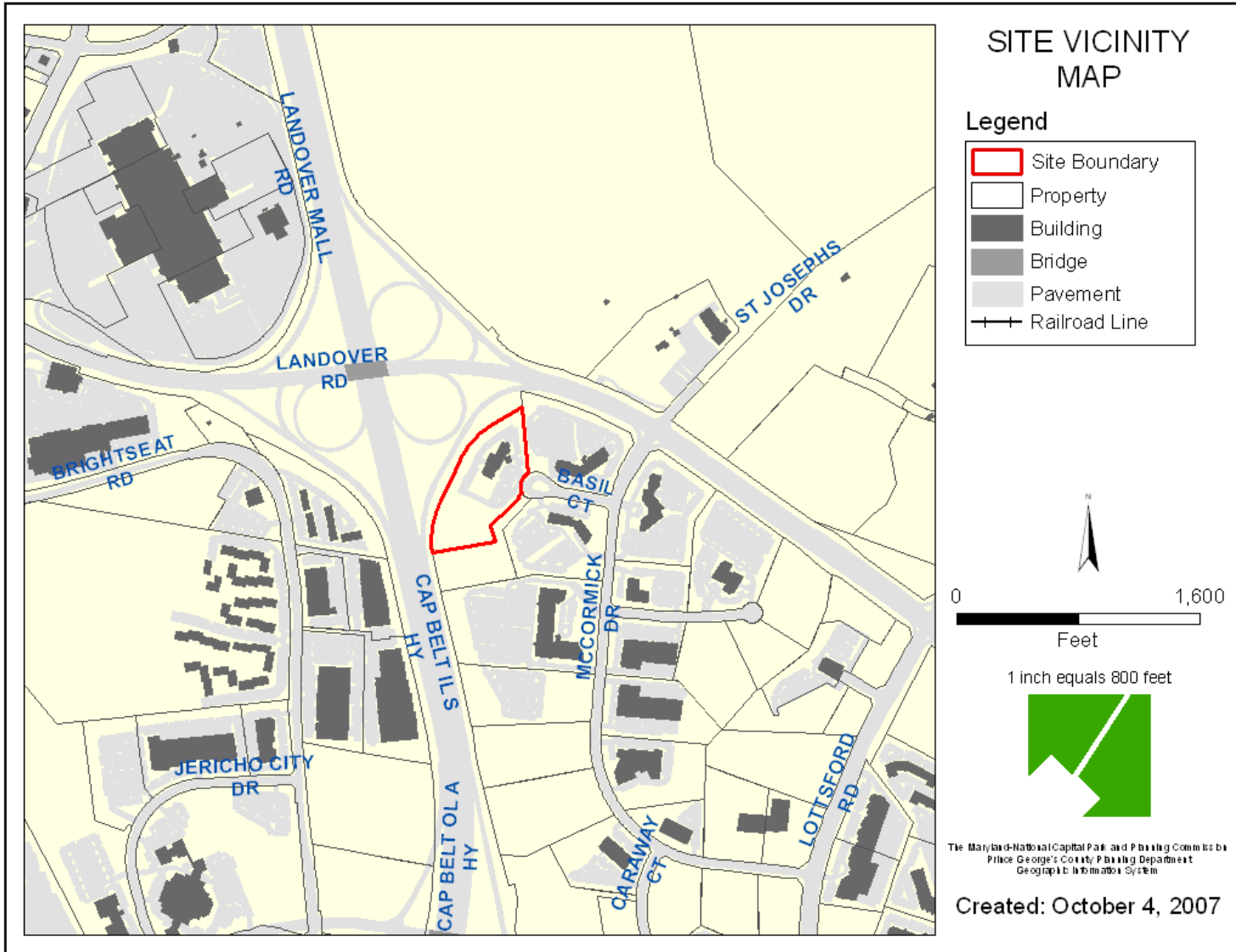
CASE: DSP-89010-03

**DOUBLETREE BY HILTON
LOT 46, INGLEWOOD BUSINESS PARK**

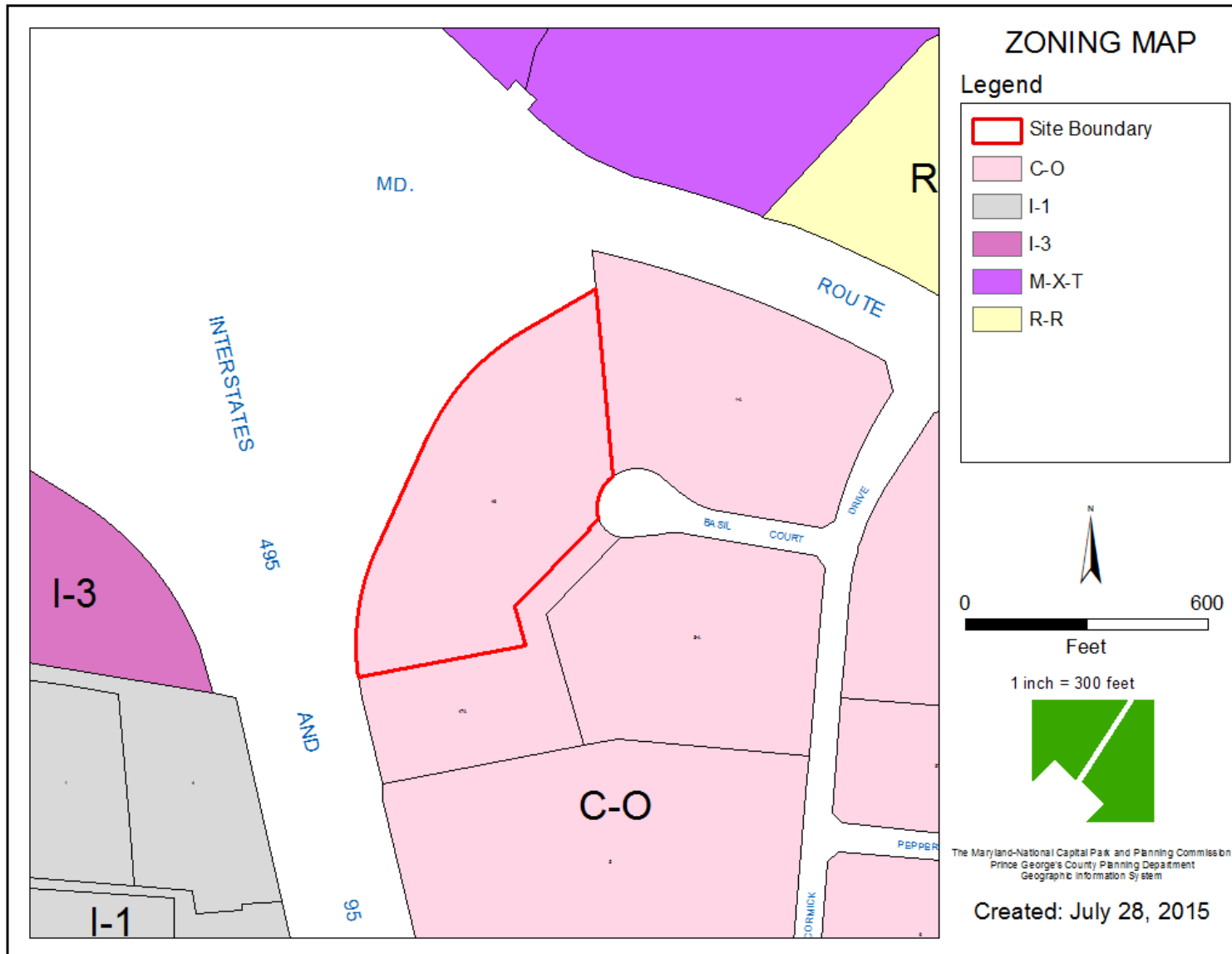
GENERAL LOCATION MAP



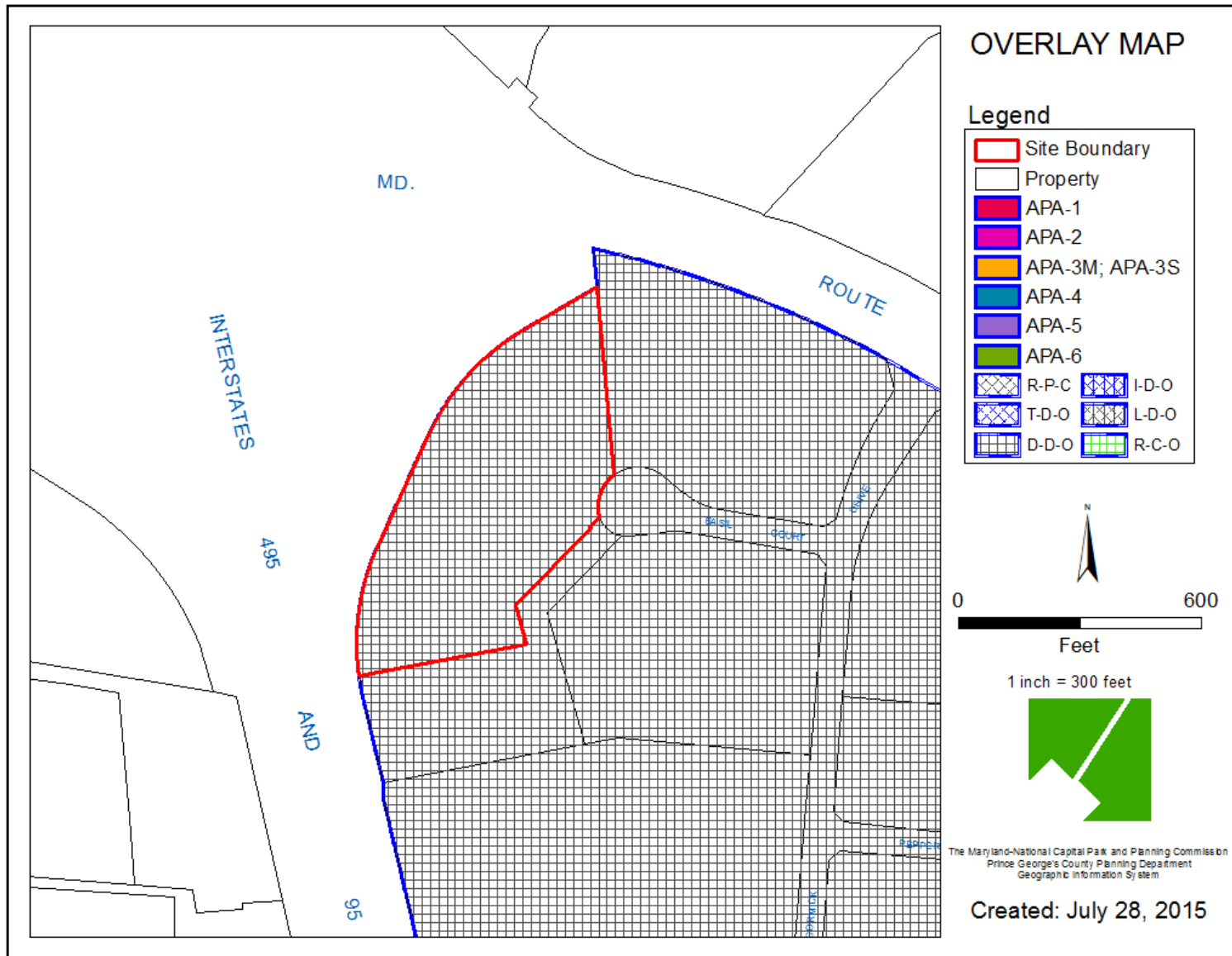
SITE VICINITY



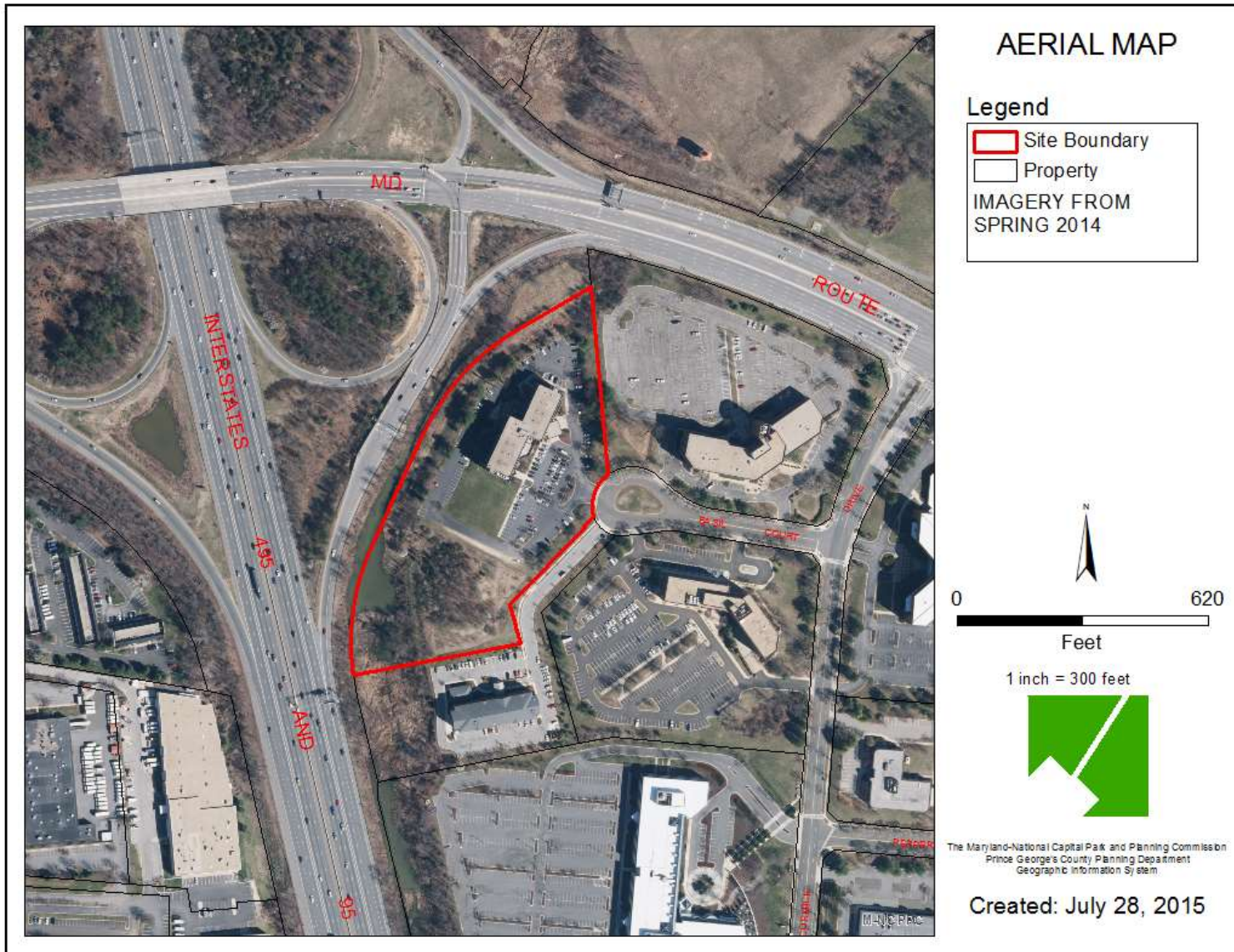
ZONING MAP



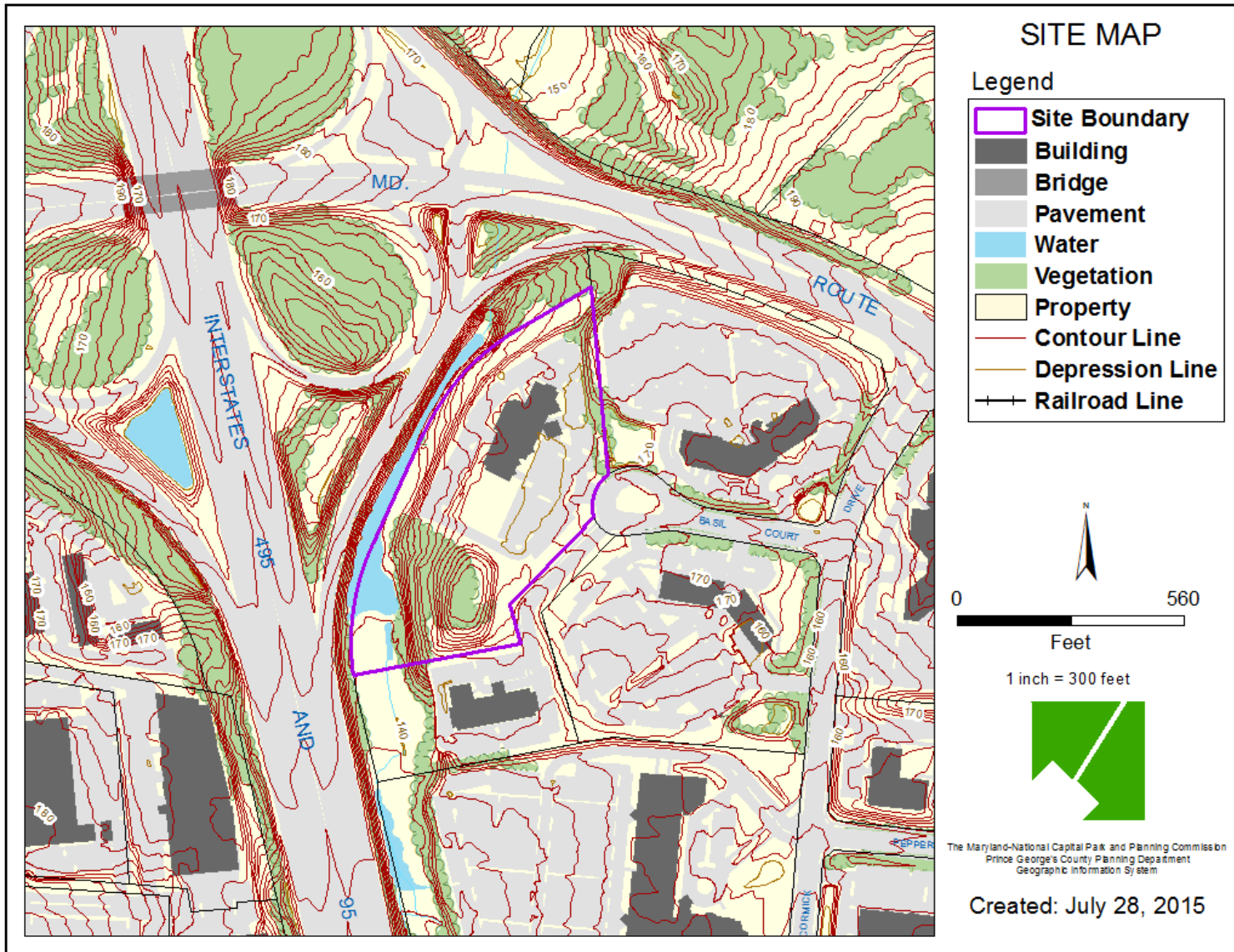
OVERLAY MAP



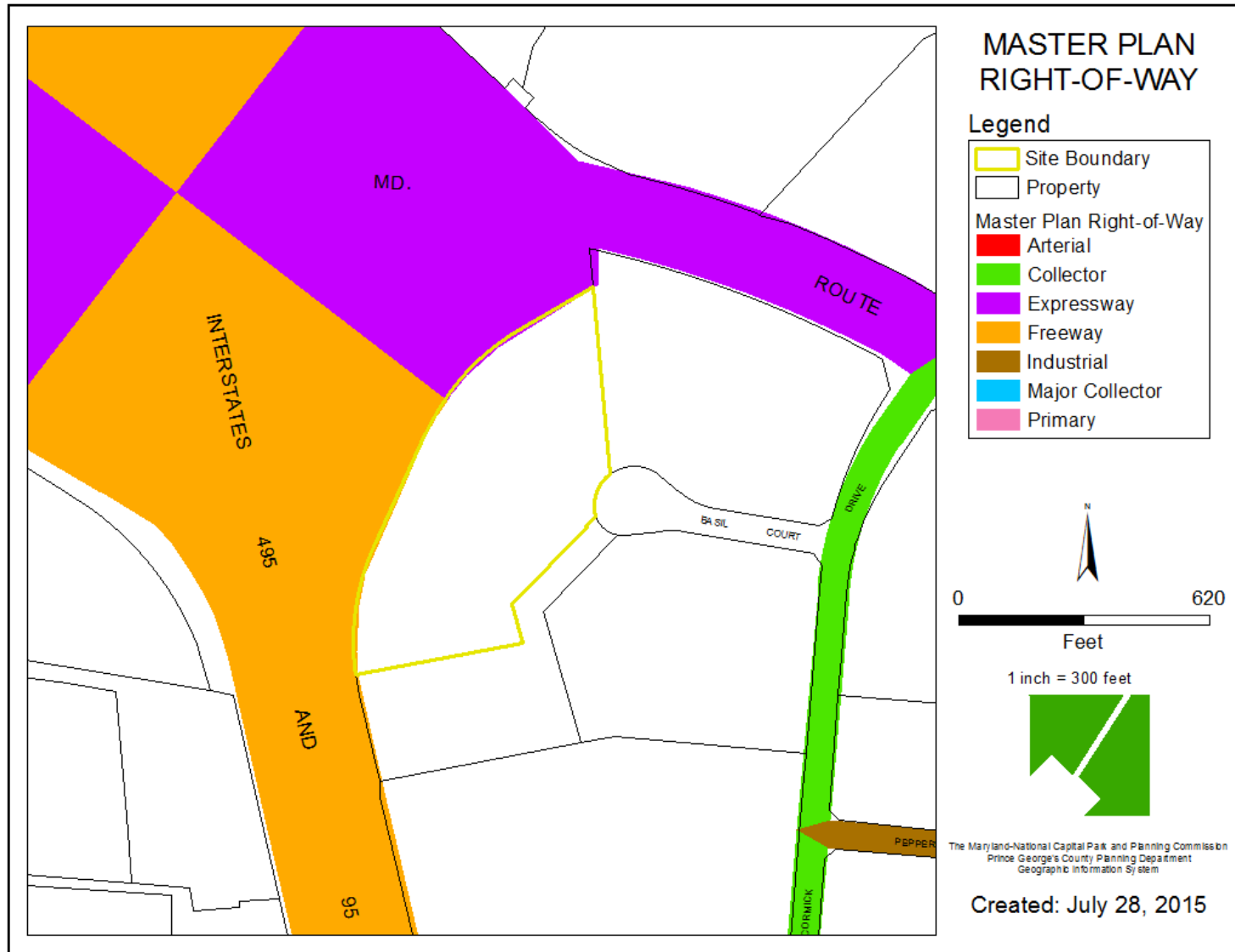
AERIAL MAP



SITE MAP



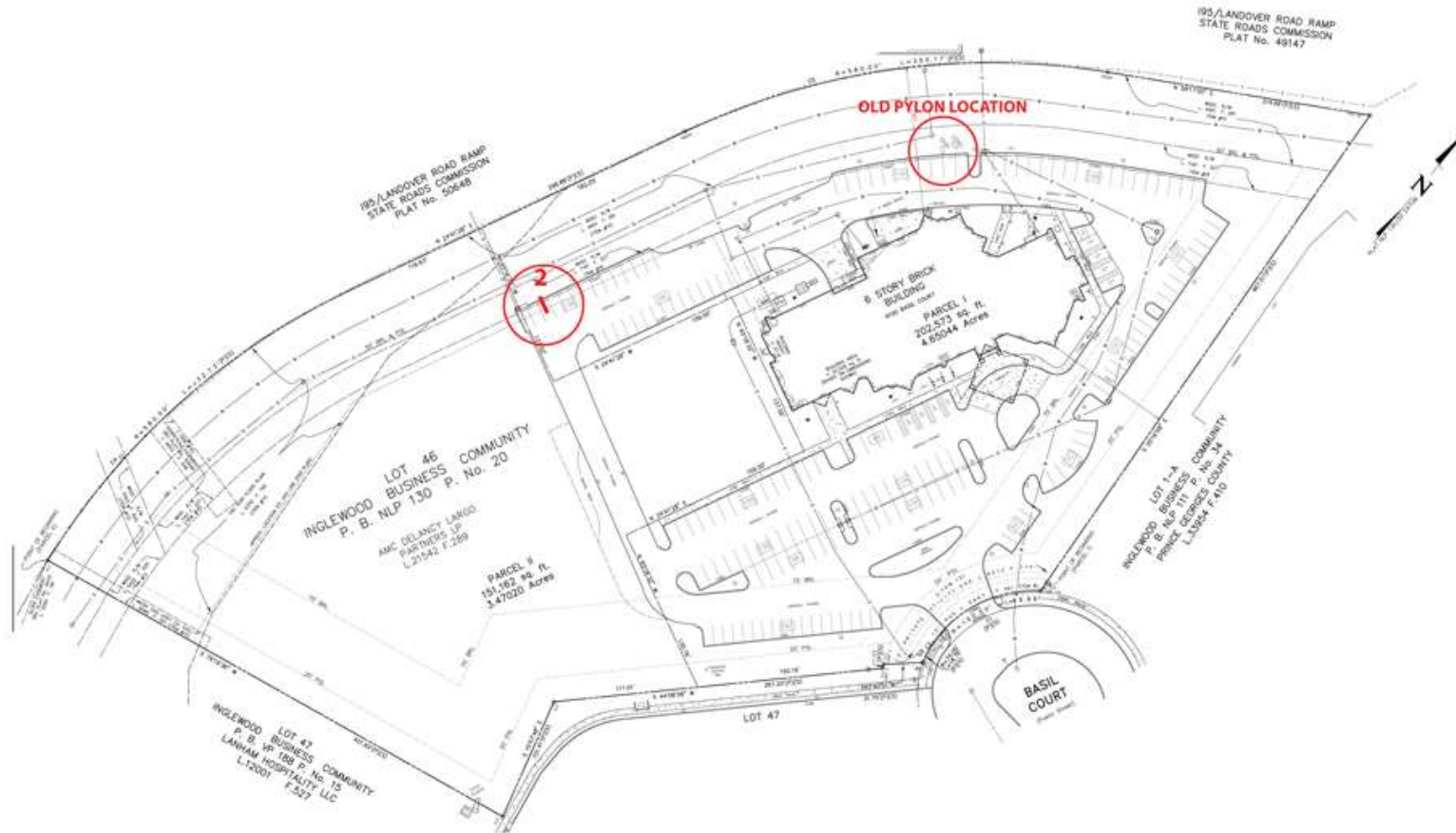
MASTER PLAN RIGHT-OF-WAY MAP



BIRD'S-EYE VIEW WITH APPROXIMATE SITE BOUNDARY OUTLINED



SIGN LOCATION PLAN



PROCEED TO PRODUCTION

AUTHORIZED SIGNATURE

DATE

LAURETANO
SIGN GROUP

 1 Tremco Drive. Terryville, CT 06786
 phone: 860.582.0233 fax: 860.583.0949
 signs@lauretano.com www.lauretano.com

TECHNICAL PAGE

6 Marked dimensions are for internal quality control purposes.

UL FILE NO. E70436

Print 9129BR-4 Quote 30930

Date 10/8/15 Line 1

2 of 2

This drawing contains original elements created by Lauretano Sign Group, Inc., and is subject to all applicable copyright laws. It is also the property of Lauretano Sign Group, Inc., and it is intended for your review and approval purposes only. This drawing is not to be reproduced, copied, transmitted by electronic media, or exhibited in any fashion or shown to anyone outside your organization without the expressed written consent of Lauretano Sign Group, Inc. This design remains the property of Lauretano Sign Group, Inc. and may not be used in any way until full payment is received by Lauretano Sign Group, Inc.



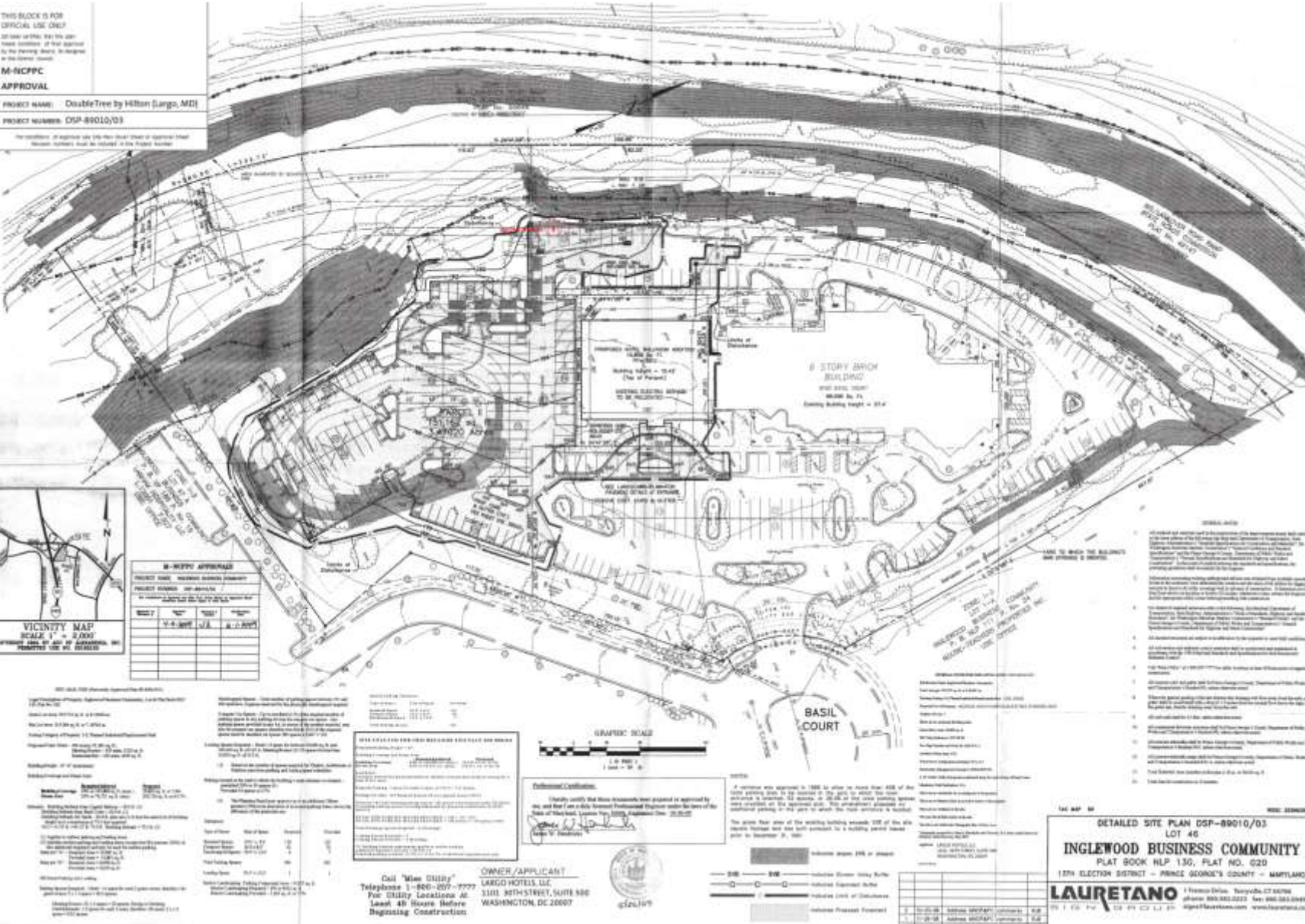
VIEW OF PREVIOUS SIGN

Street View - Aug 2008

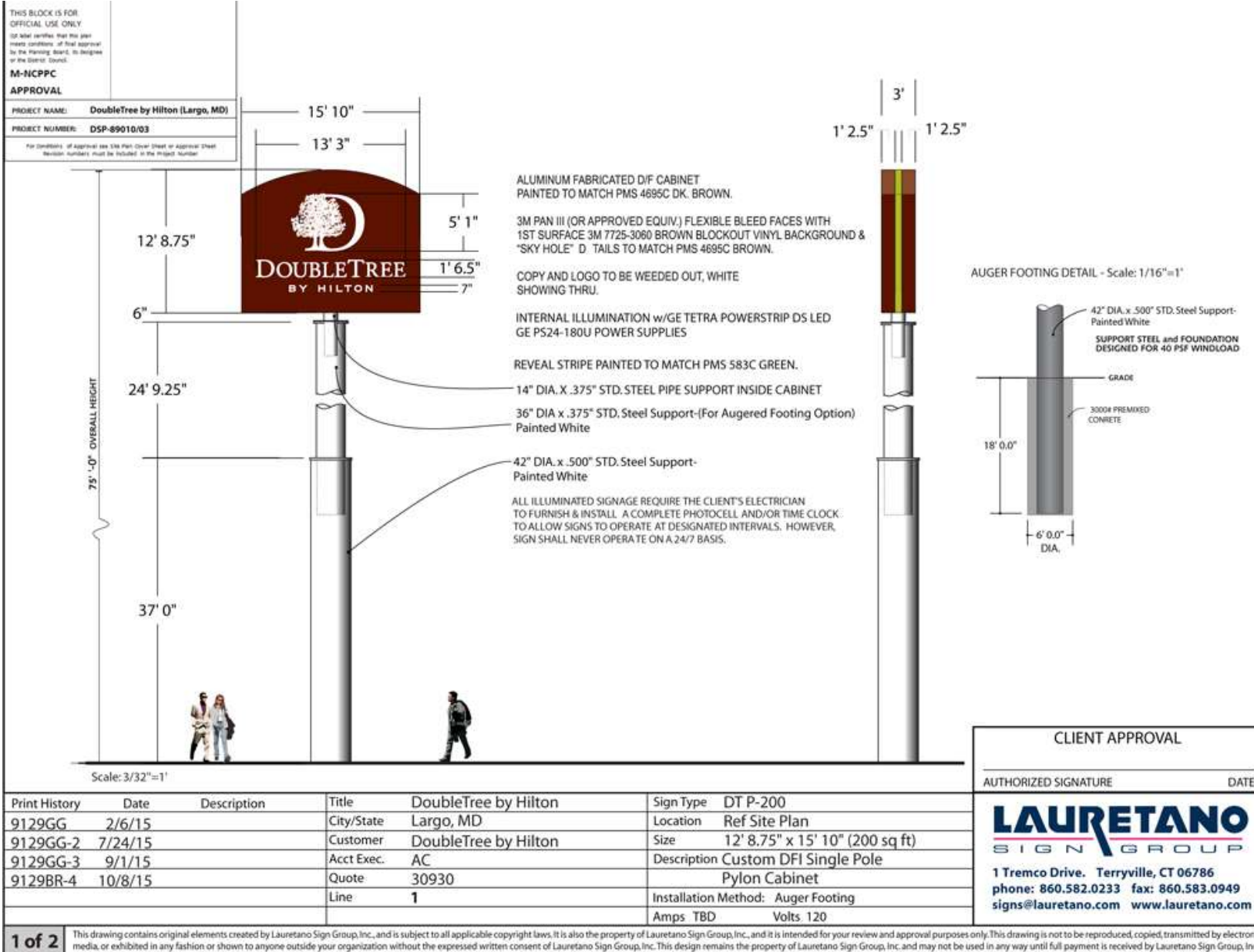


SITE PLAN

THIS BLOCK IS FOR OFFICIAL USE ONLY	<p>DO NOT WRITE IN THE WHITE SPACES OF THIS PAGE. ANY INFORMATION WRITTEN HEREIN IS TO BE USED FOR OFFICIAL USE ONLY.</p> <p>M-NCPPC</p> <p>APPROVAL</p>
PROJECT NAME:	DisableTree by Hilton [Jorge, MD]
PROJECT NUMBER:	CSP-89010/03



SIGN DETAILS



VIEW FROM 495 NORTH BOUND



VIEW FROM 495 NORTH BOUND



VIEW FROM 495 NORTH BOUND



VIEW FROM 495 NORTH BOUND

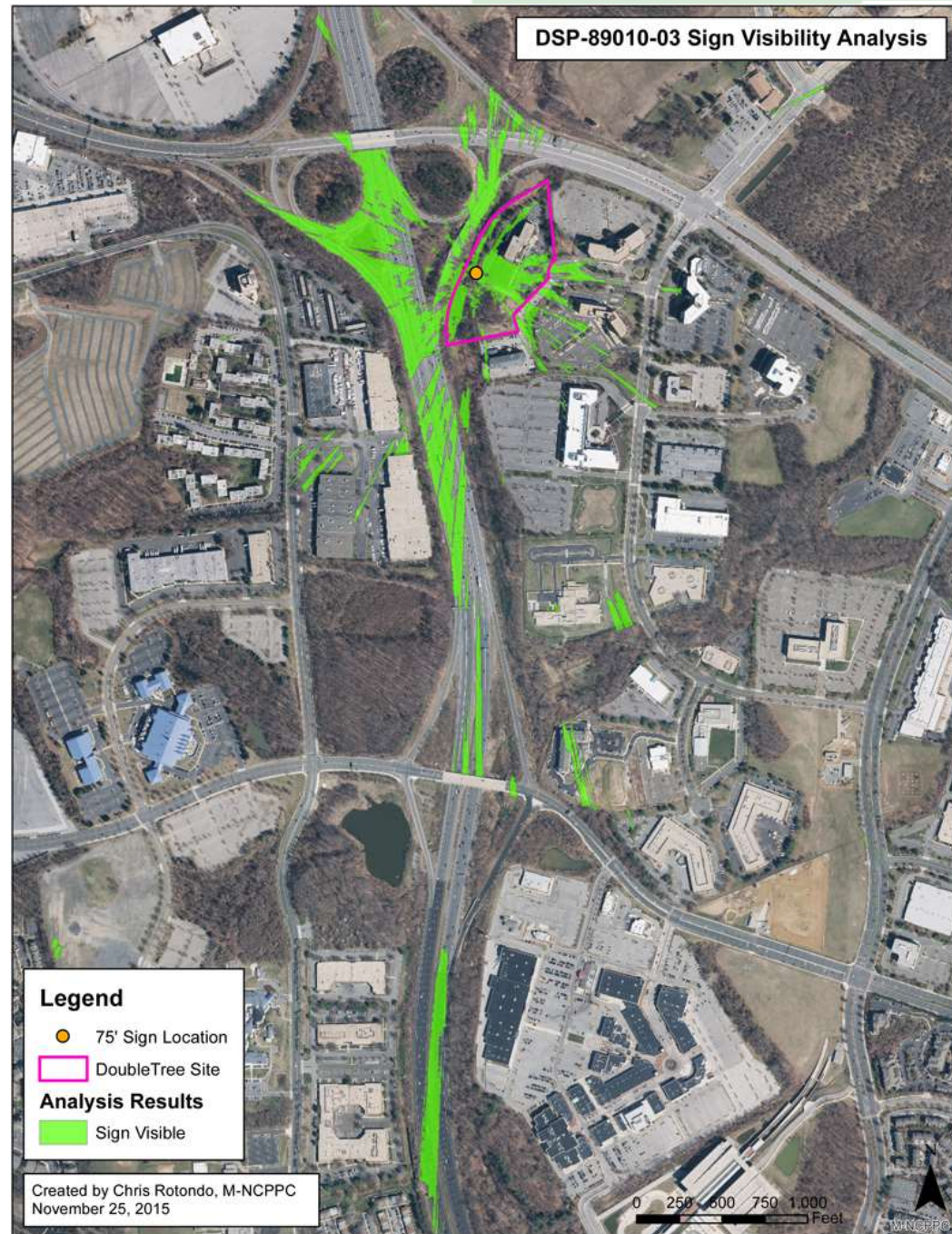


RENDERED VIEW SOUTH BOUND

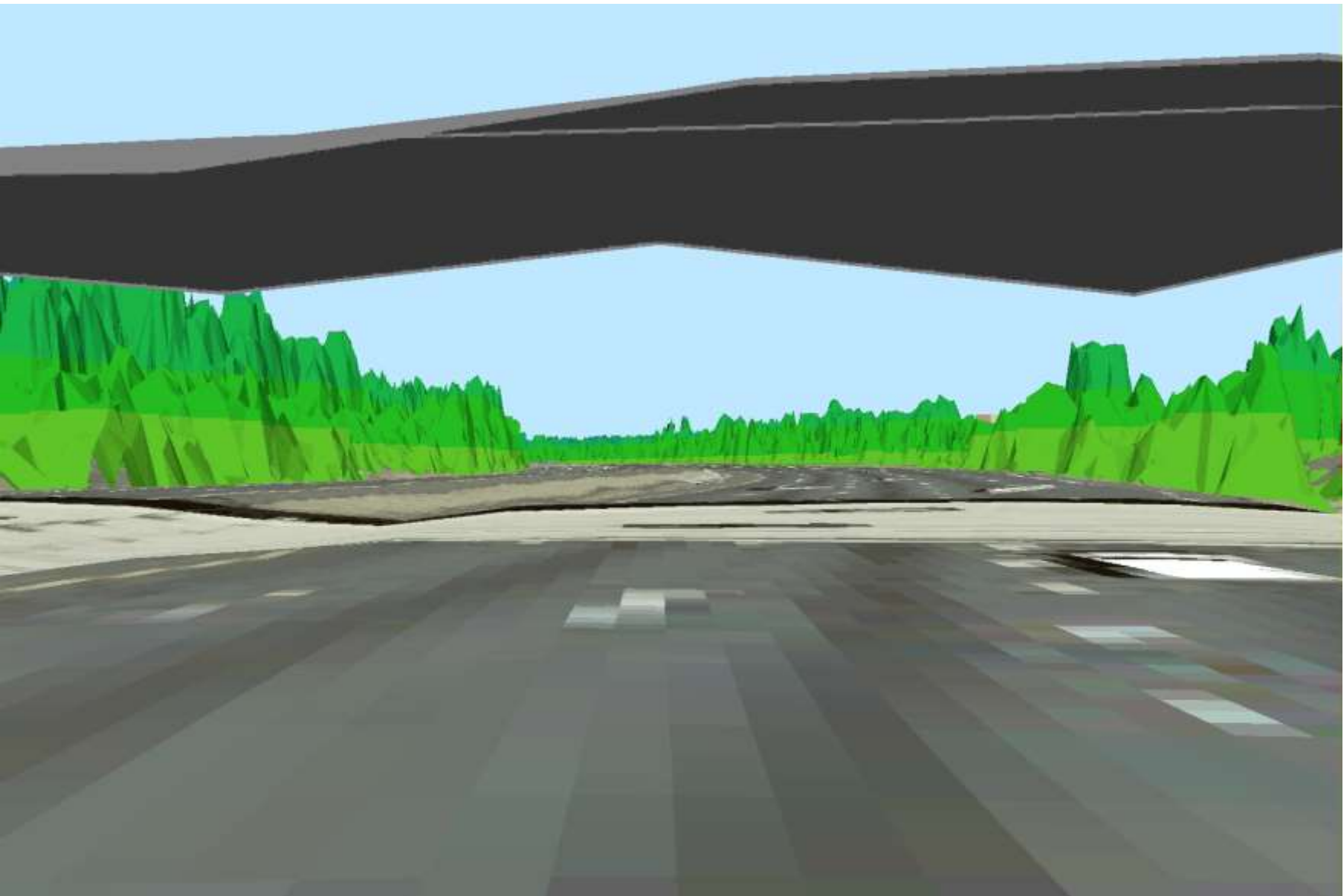
VIEW FROM BELTWAY JUST SOUTH OF RT.202 OVERPASS
LOOKING SE TOWARD DOUBLETREE SITE.



SIGN VISIBILITY ANALYSIS



3-D VIDEO NORTH BOUND



3-D VIDEO SOUTH BOUND

