

Mandatory Referral Review

**Staff Recommendation:** Approve Recommendations

# **MR-2025-0002**

## **Palmer's Corner Telecom Tower Replacement**

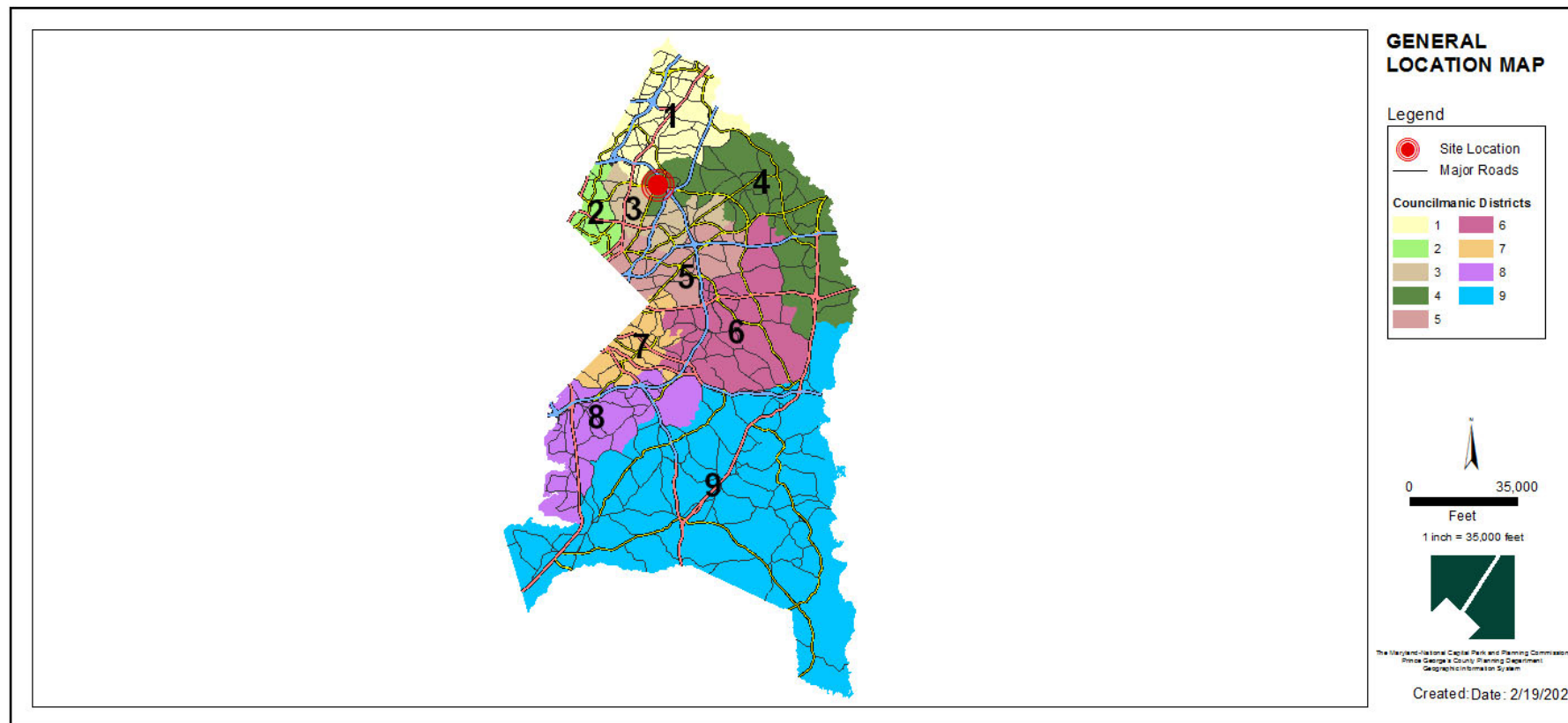
For review by:

**PRINCE GEORGE'S COUNTY PLANNING BOARD**

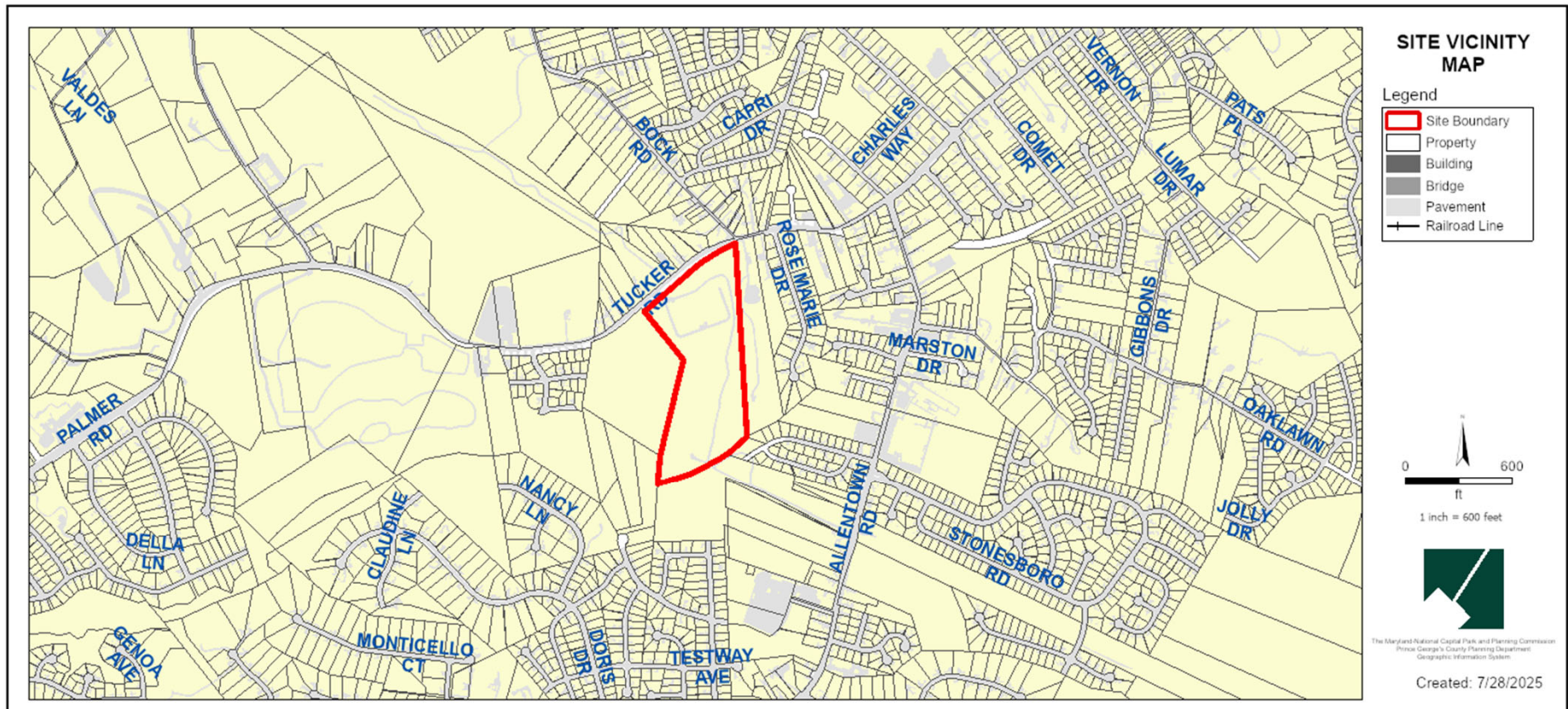
**December 4, 2025**

## GENERAL LOCATION MAP

Council District: 8  
Planning Area: 76B



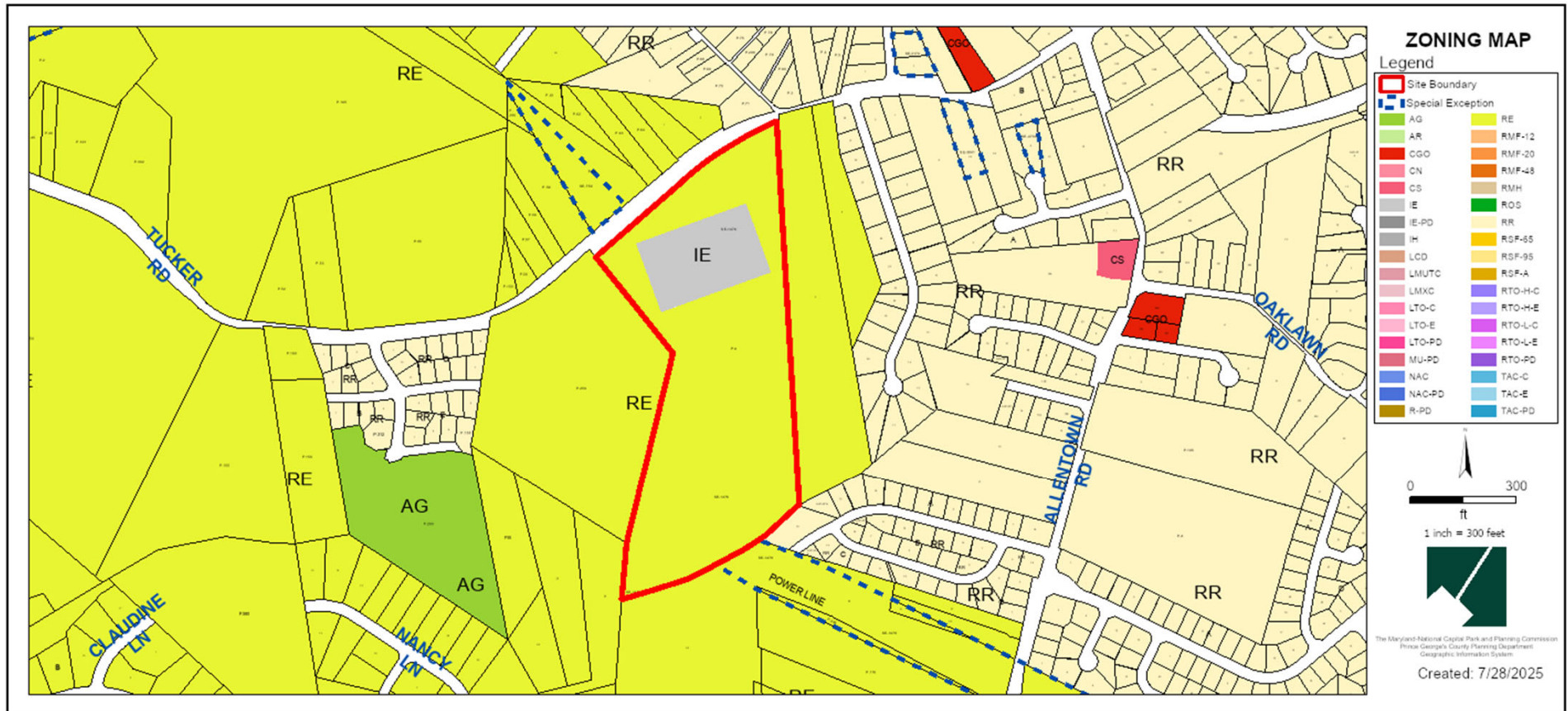
## SITE VICINITY MAP





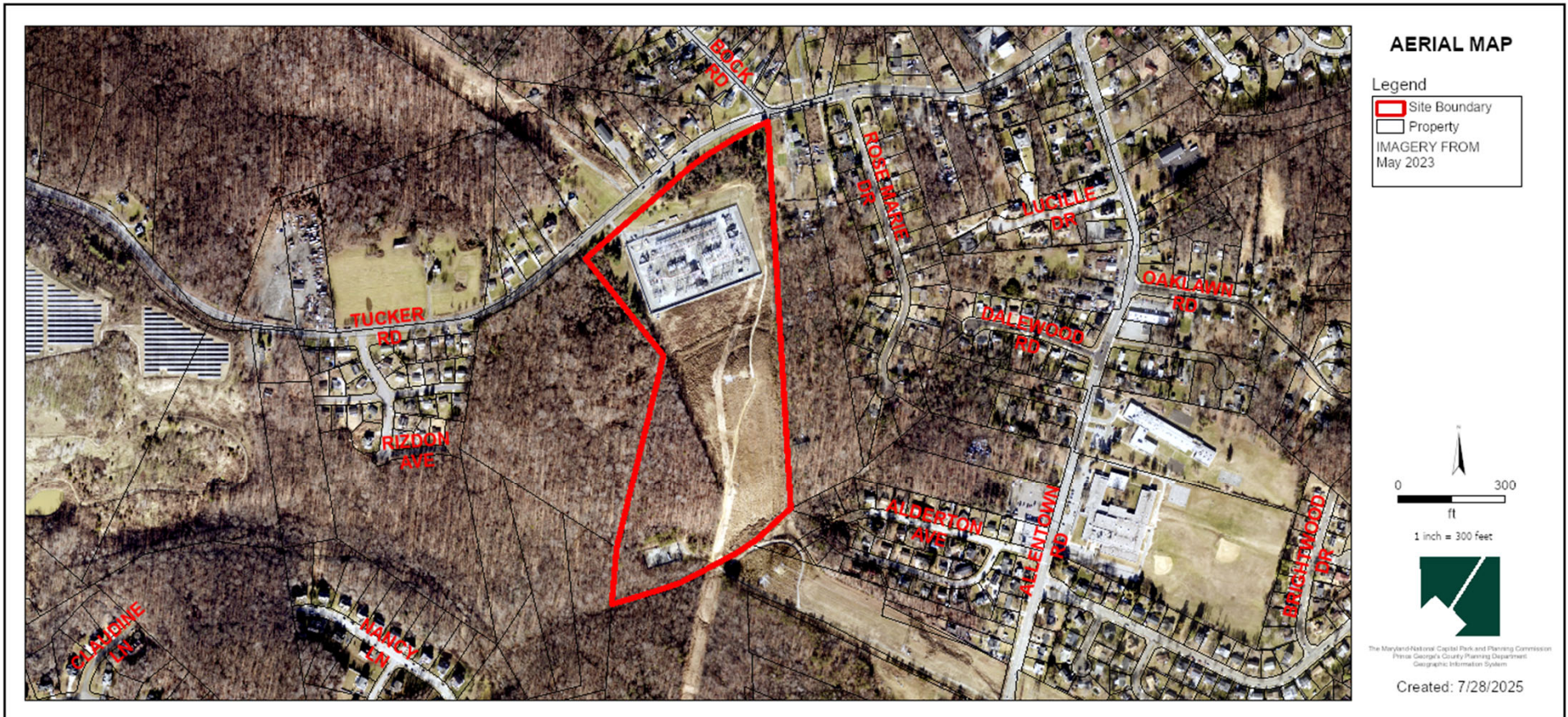
# ZONING MAP

Property Zone: IE



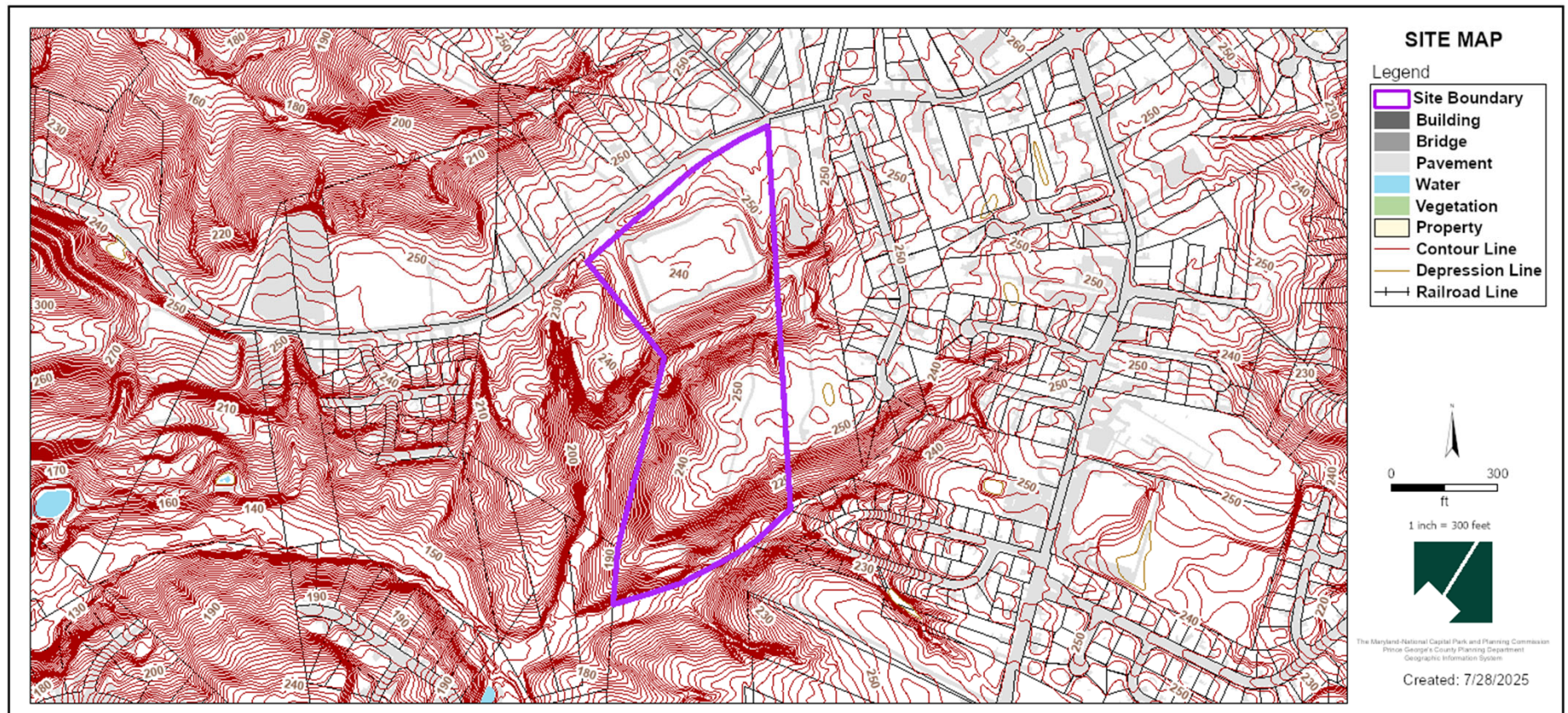


## AERIAL MAP

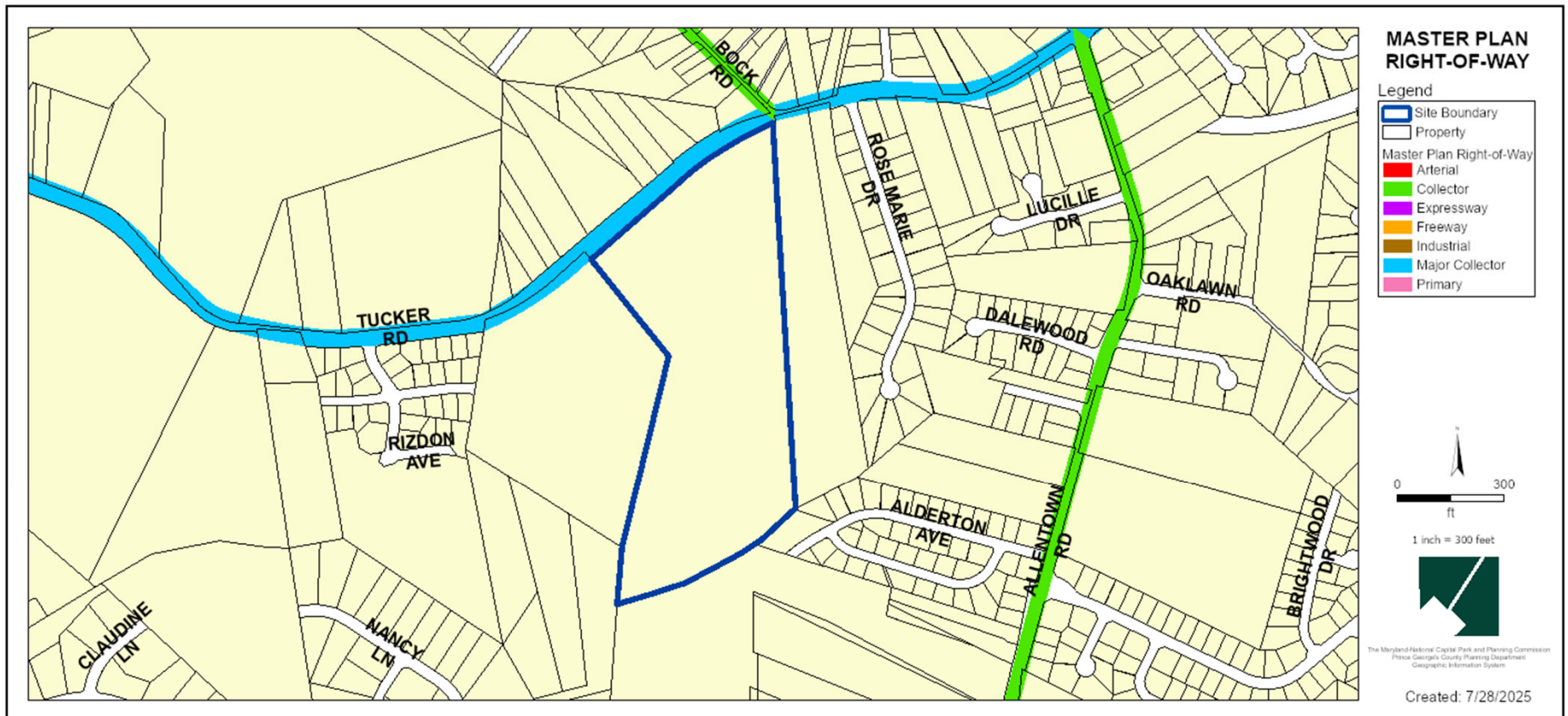




## ENVIRONMENTAL FEATURES MAP



# MASTER PLAN RIGHT-OF-WAY MAP





## SITE FEATURES

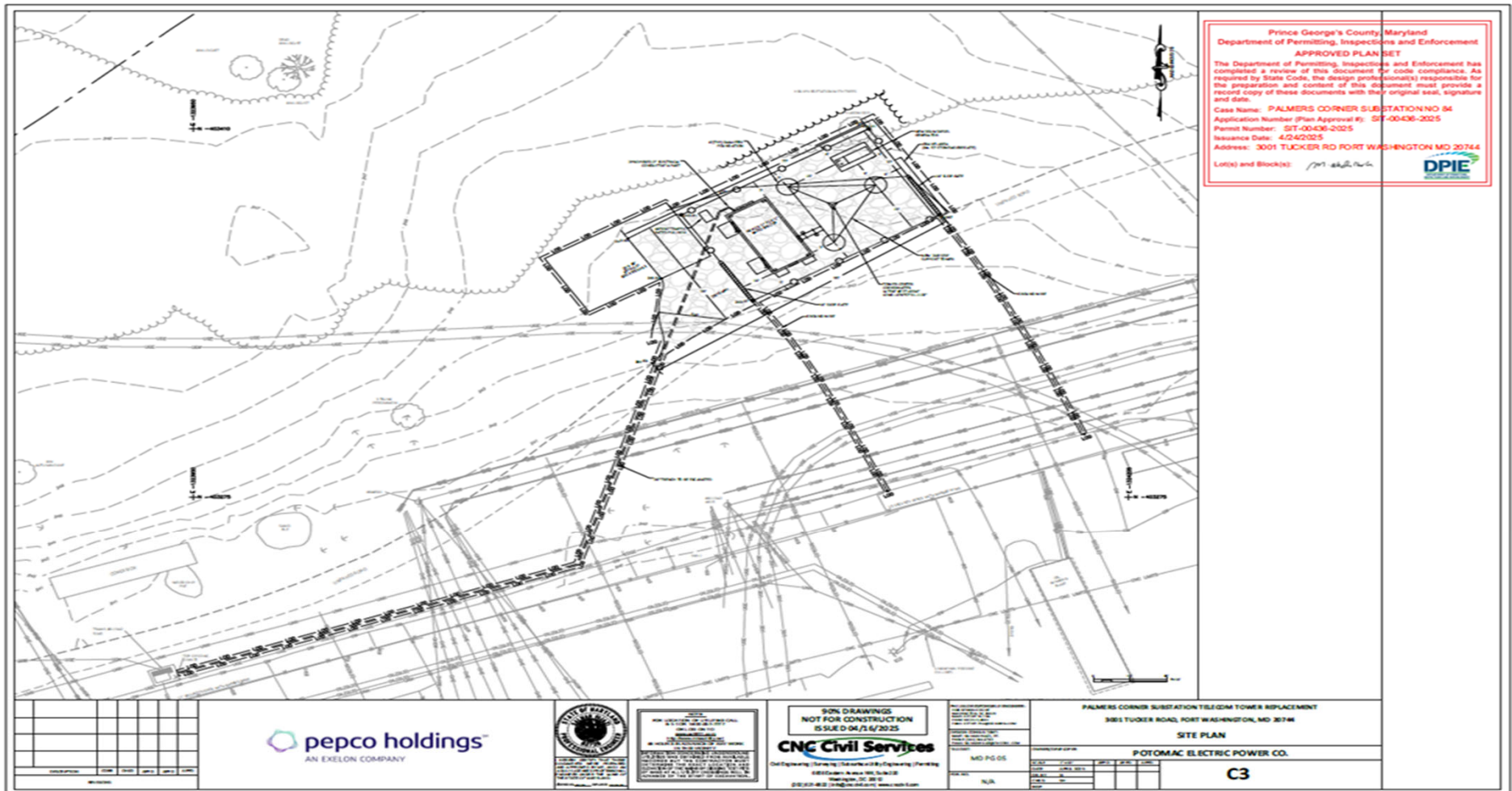
- Remove and replace existing 187-foot-tall telecommunications tower with a 199-foot-tall telecommunications tower
- New chain link fence surrounding the antenna with two 16-foot slide gates at opposing ends of the site



## COMMUNITY OUTREACH & PUBLIC ENGAGEMENT

### PLANNING DEPARTMENT:

- A notice was mailed to adjoining, fronting, and abutting property owners and area civic associations on September 3, 2025.





## STAFF RECOMMENDATIONS

1. As per Sec. 27-6207(a)(2) of the Zoning Ordinance, construct a 5-foot sidewalk along the property on the south side of Tucker Road from the existing sidewalk near the Bock Road intersection to the west side of the property.
2. Continue coordination with the Office of the Fire Marshall to make any additional minor modifications for emergency and service vehicle access.
3. Continue coordination with the Federal Aviation Administration to ensure the tower does not exceed maximum height requirements.
4. Provide a Tree Canopy Coverage Schedule with the latest template.