

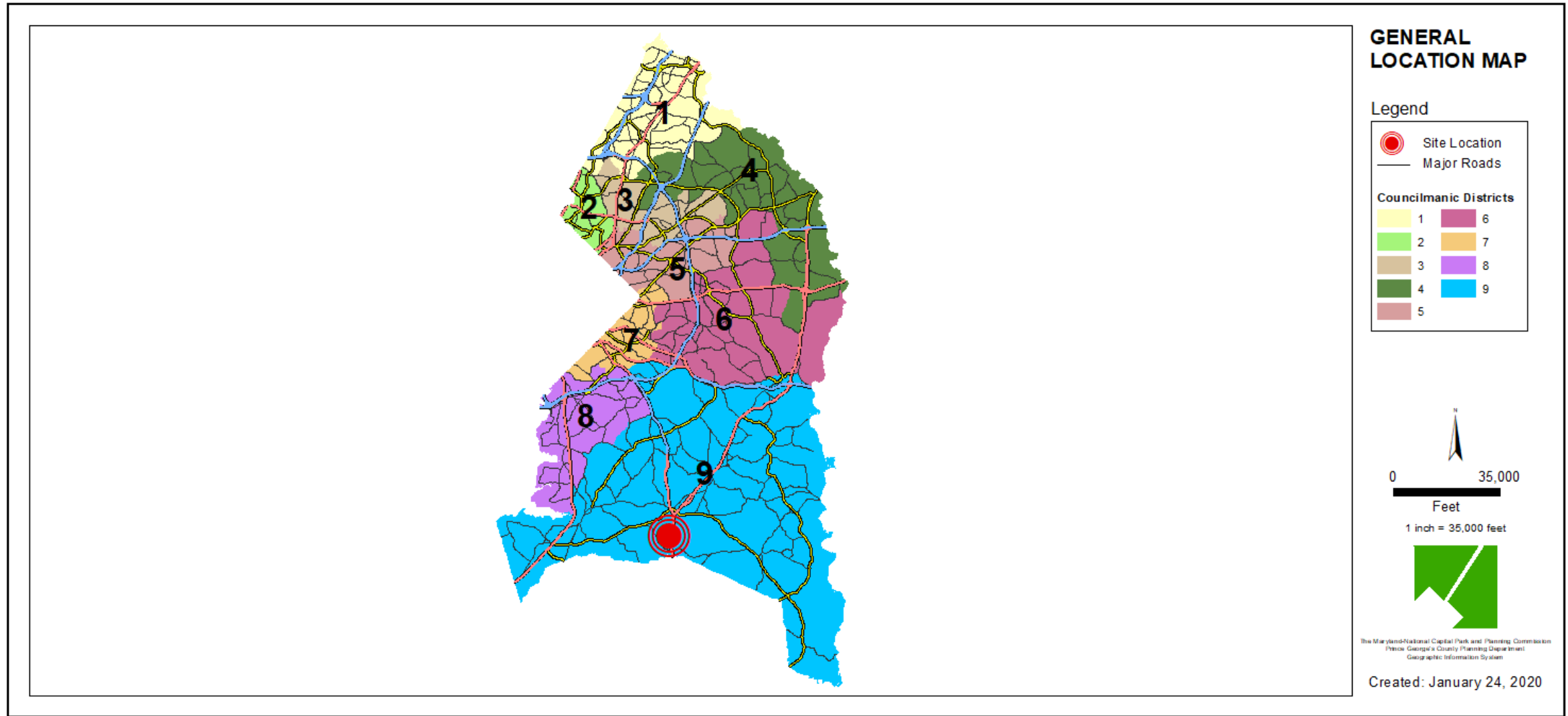
ITEM: 12

CASE: SDP-1802

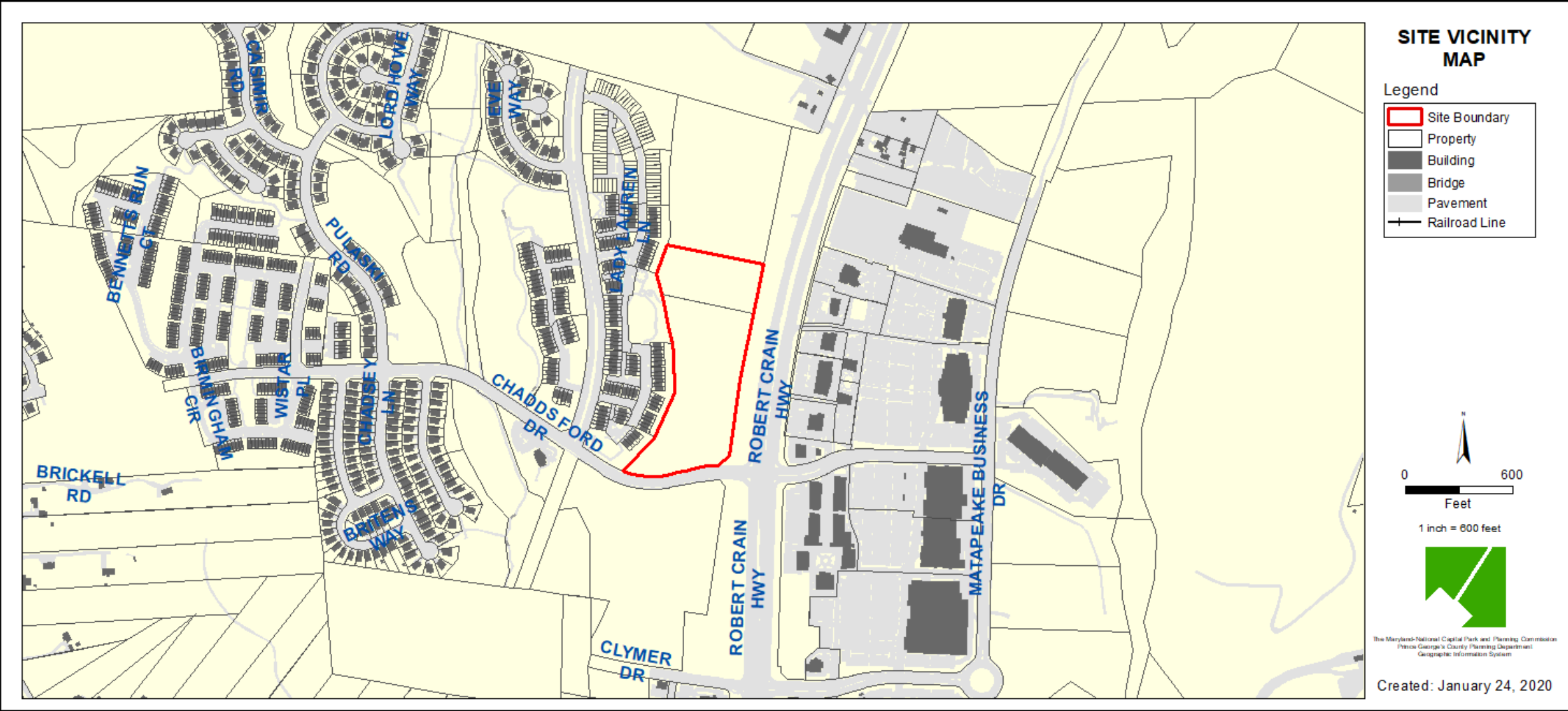
BRANDYWINE VILLAGE COMMERCIAL

THE PRINCE GEORGE'S COUNTY PLANNING DEPARTMENT

GENERAL LOCATION MAP



SITE VICINITY

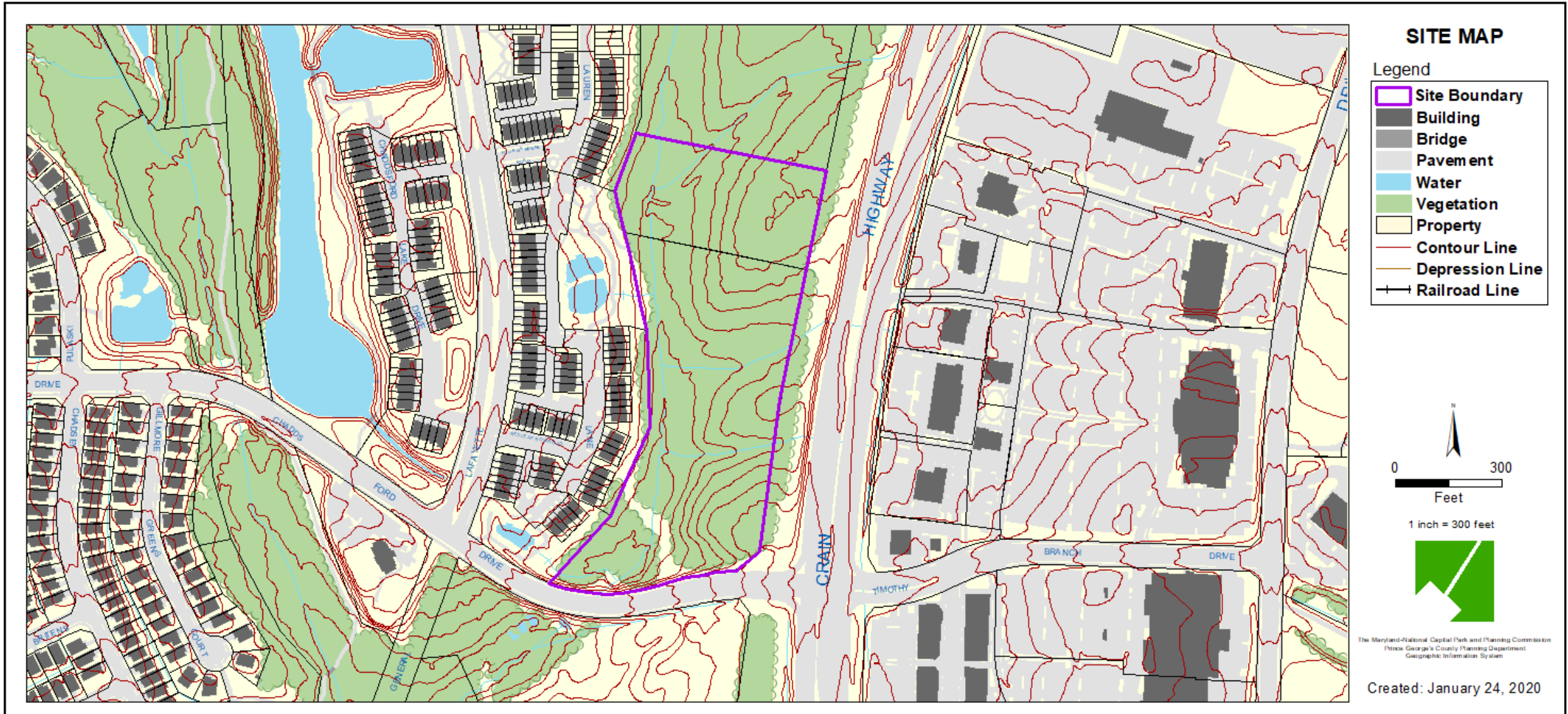




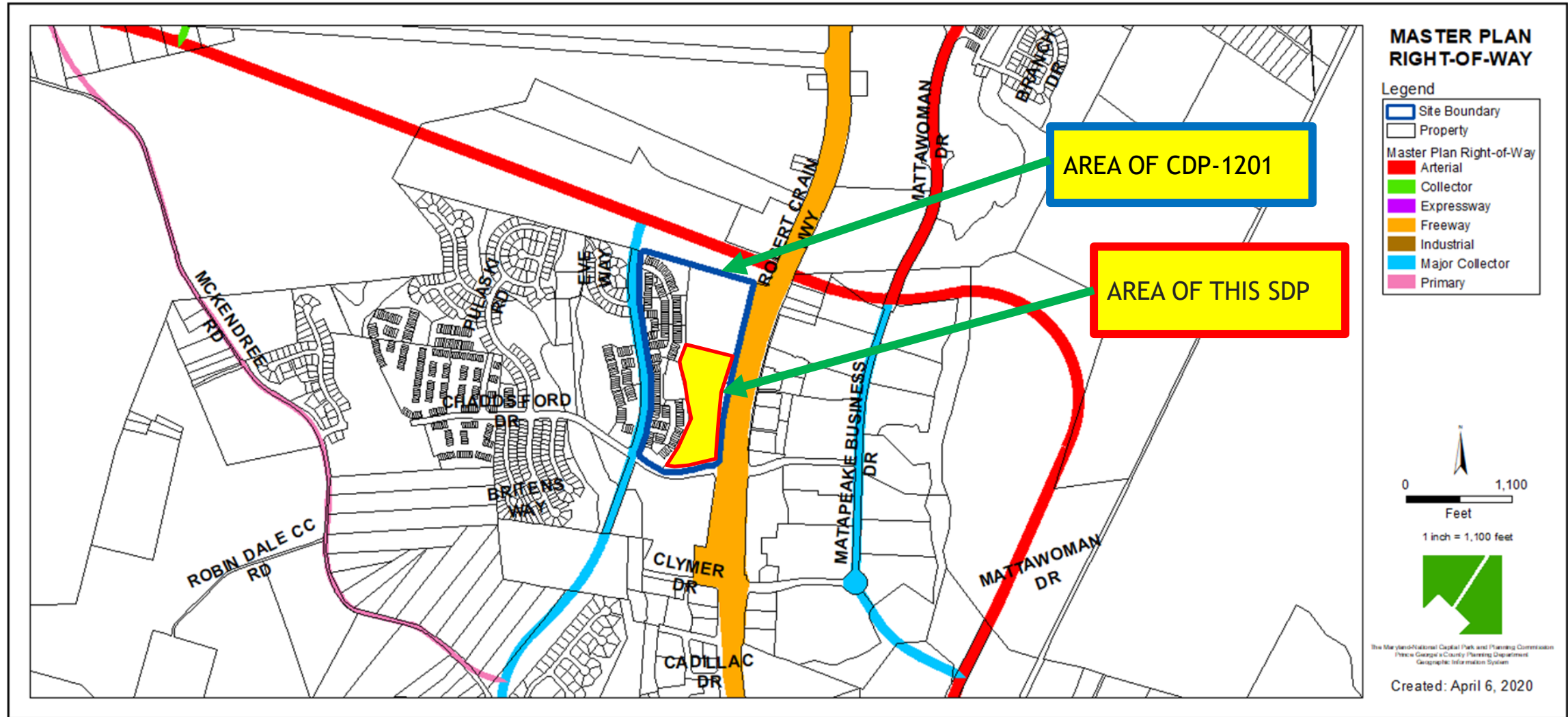
AERIAL MAP



SITE MAP



MASTER PLAN RIGHT-OF-WAY MAP



SITE PLAN



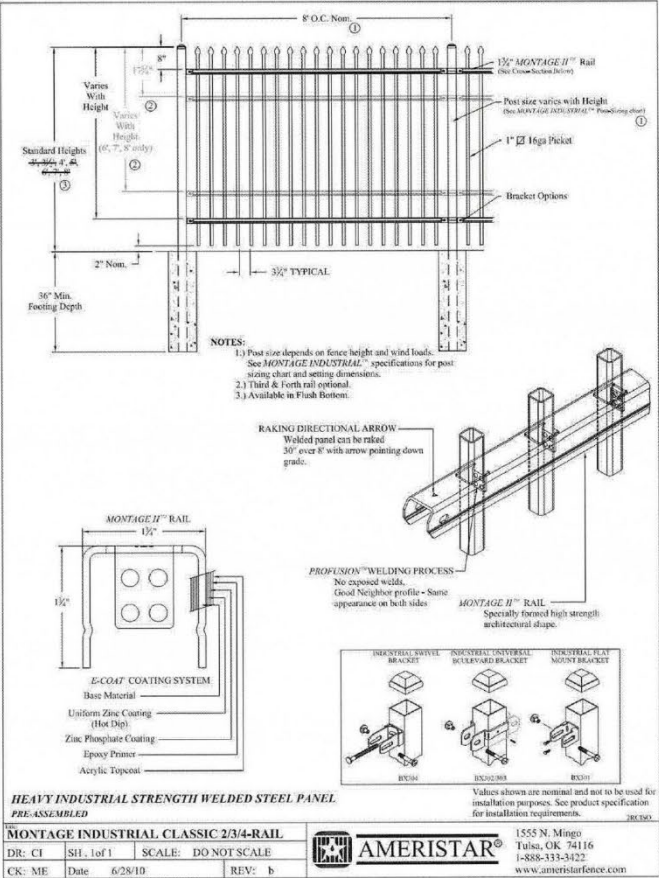




ILLUSTRATIVE IMAGE



TRAIL BRIDGE AND DECORATIVE SAFETY FENCE DETAILS

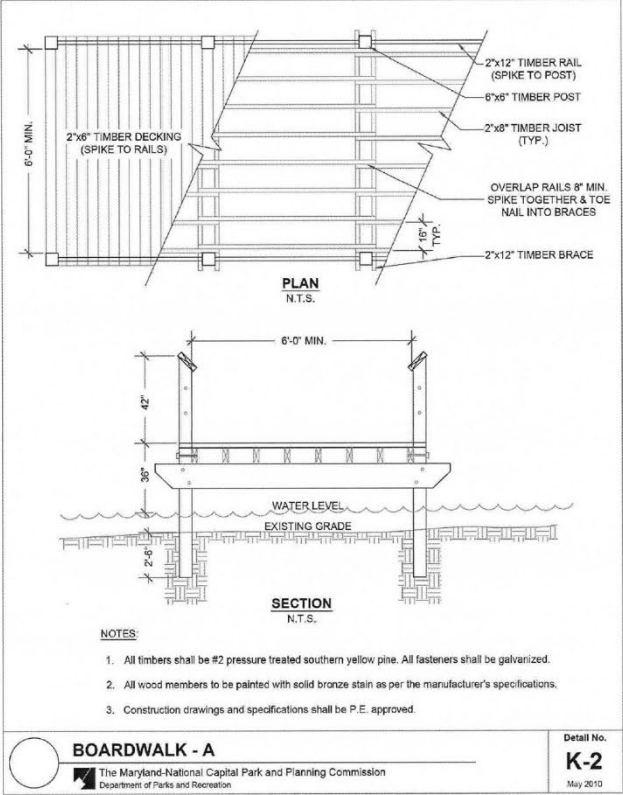


- 3
6
- DECORATIVE SAFETY FENCE DETAIL**

SCALE: NTS

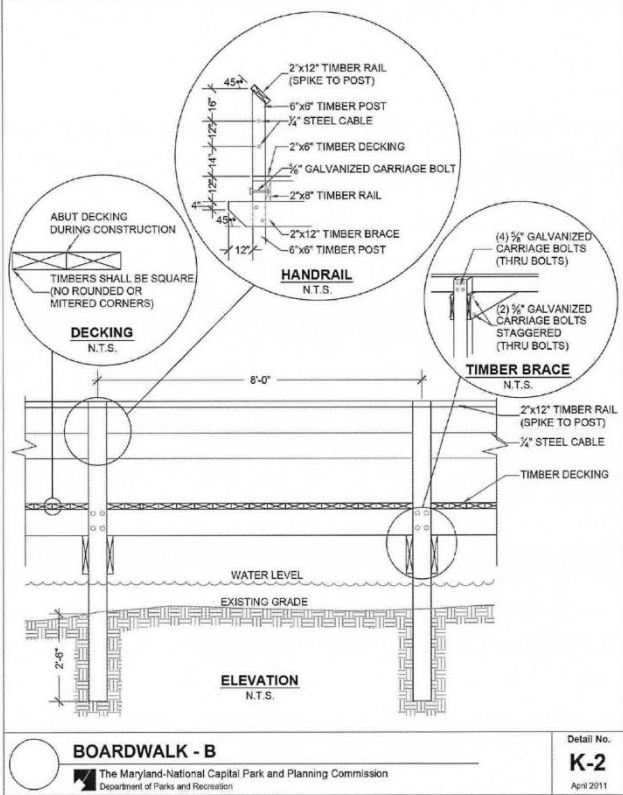
NOTE:

 1. COLOR: BLACK
 2. INSTALLATION PER MANUFACTURERS SPECIFICATIONS
 3. SHOP DRAWING SHALL BE SUBMITTED AND APPROVED BY PRINCE GEORGE'S COUNTY, OWNER, OR OWNERS AGENT, PRIOR TO CONSTRUCTION.
 4. SUBJECT TO GEOTECHNICAL AND STRUCTURAL RECOMMENDATIONS BY A PROFESSIONAL ENGINEER LICENSED IN THE STATE OF MARYLAND.
 5. OR APPROVED EQUIVALENT EQUAL.



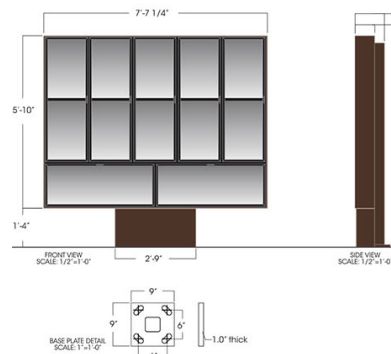
- 4
6
- TRAIL BRIDGE DETAIL OR APPROVED EQUAL**

SCALE: NTS





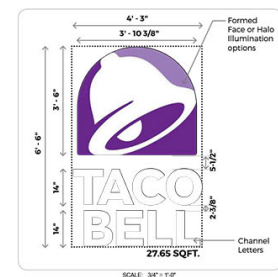
TACO BELL PROPOSED SIGNAGE



GENERAL SPECIFICATIONS:
Materials: Aluminum sheets & steel tubes
Decorations: Powder coat Taco Bell Bronze & black
Menu Board Area Squared: 44.50 Sq. Ft.
Weight (Est.):
• 745 lbs. (squared)
• 545 lbs. (unsquared)

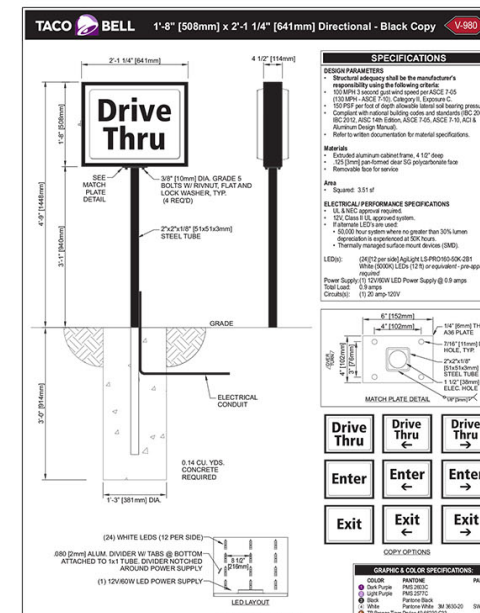
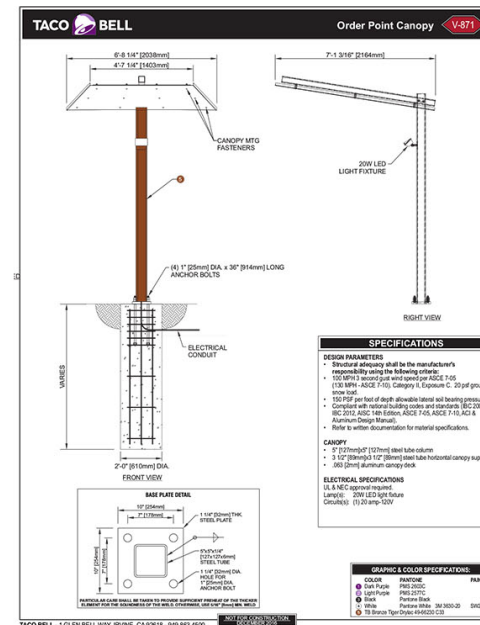
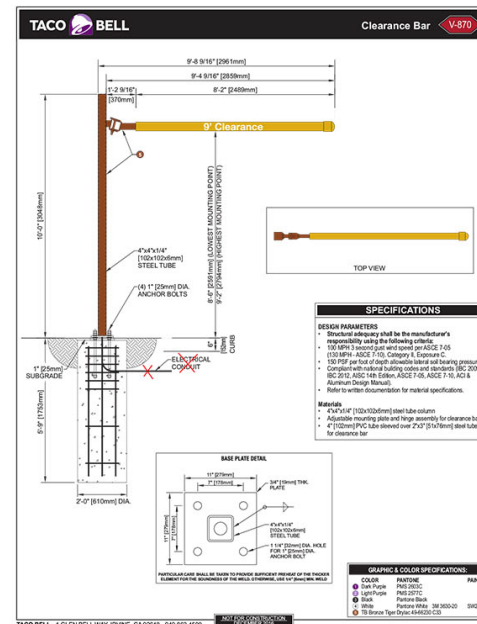
ELECTRICAL
Illumination:
• White LEDs
Power Supplies:
• C2-D2-00008 Electronic LED Power Supplies
Line Load:
• 1.92 amps @ 120 vac-60Hz
• (1) 20 amp circuit

COLORS:
Exterior:
Doors & Mullions: Powder coat Taco Bell Black
Cabinet: Powder coat Taco Bell Bronze



MONUMENT & DIRECTIONAL

V-02.19	V-02.33	V-02.52	V-03
DESCRIPTION: Monument Sign 19 SF with Breakfast Area: 19 SF	DESCRIPTION: Monument Sign 33 SF with Breakfast Area: 33 SF	DESCRIPTION: Monument Sign 52 SF with Breakfast Area: 52 SF	DESCRIPTION: Directional Sign 3.5 SF Area: 3.5 SF
OPTIONS: <div style="display: flex; justify-content: space-around;"> <div>Drive Thru Enter Exit</div> <div>Drive Thru Enter Exit</div> <div>Drive Thru Enter Exit</div> </div>			



V-09.14W

DESCRIPTION:
Medium TB 14" White
Channel Letters - Linear or
Stacked

Application: Wall Mounted

Lock-up guidelines:
Medium Letters to be used
with Medium internally
illuminated Bell Logo Id

Area:
Squared 9.92 SF

SHOPPING CENTER PROPOSED ELEVATIONS



4 PROPOSED ELEVATION

Scale: 1/8" = 1'-0"



3 PROPOSED ELEVATION

Scale: 1/8" = 1'-0"

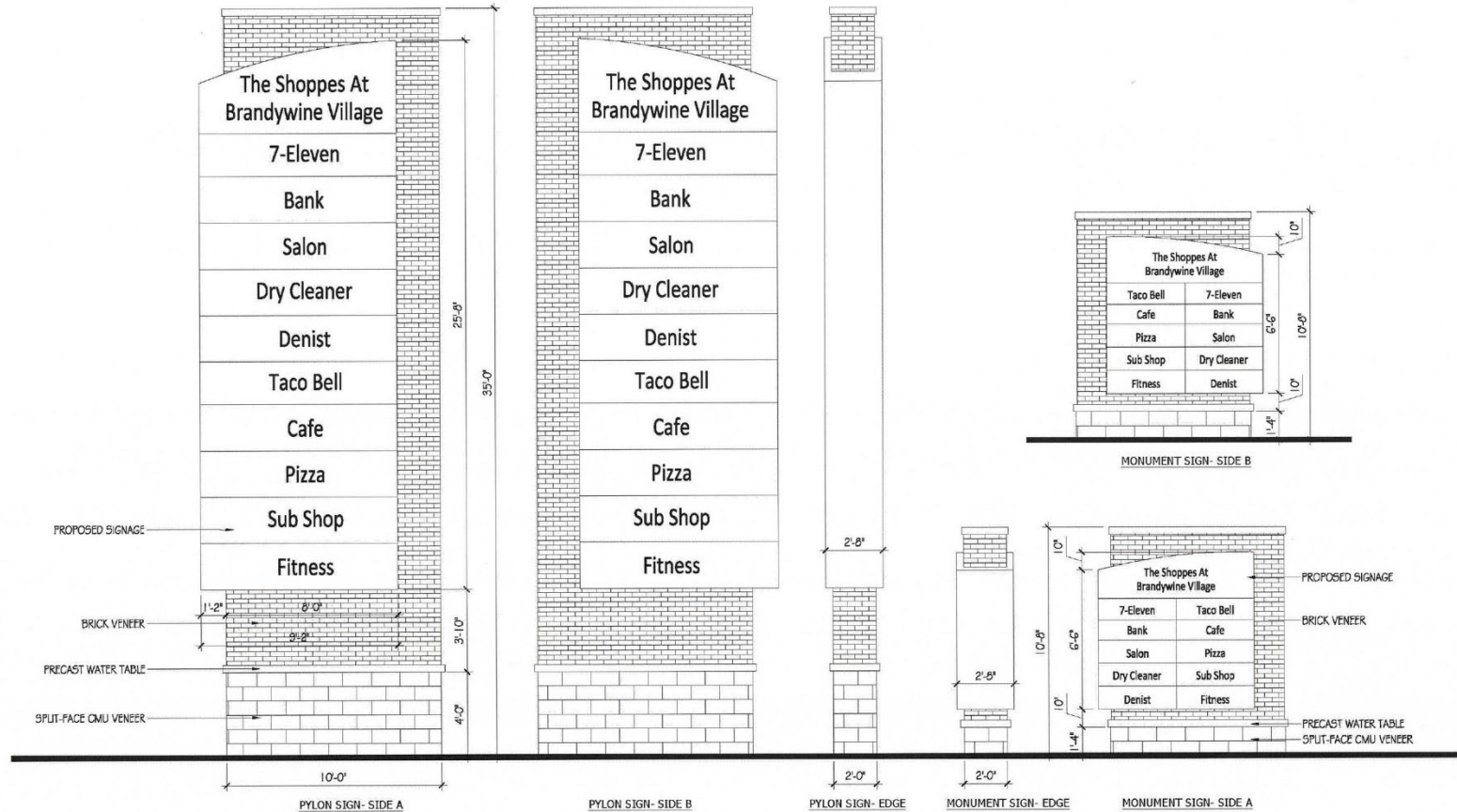


2 PROPOSED ELEVATION

Scale: 1/8" = 1'-0"



SHOPPING CENTER SIGN DETAILS



1 6 MONUMENT SIGN DETAIL

SCALE: NTS

SIGN NOTES:

1. SIGNAGE SHOWN AS SPECIFIED ON THIS PLAN, OR SUBSTITUTION AS APPROVED BY PRINCE GEORGE'S COUNTY PLANNING BOARD OR THEIR DESIGNEE.
2. SHOP DRAWINGS SHALL BE SUBMITTED TO PRINCE GEORGE'S COUNTY, SUBJECT TO APPROVAL BY THE OWNER, OR THE OWNERS AGENT PRIOR TO SUBMITTAL FOR PERMIT.
3. SHOP DRAWINGS SHALL BE SUBMITTED WHEN APPROVED BY PRINCE GEORGE'S COUNTY, MNCPPC AND PERMITS ISSUED PRIOR TO CONSTRUCTION.
4. SUBJECT TO GEOTECHNICAL RECOMMENDATIONS BY A LICENSED PROFESSIONAL ENGINEER IN THE STATE OF MARYLAND.
5. FINAL INSTALLATION SPECIFICATIONS TO BE PROVIDED BY MANUFACTURER.
6. SIGN DETAIL SHOWN IS FOR INFORMATIONAL PURPOSES ONLY.
7. OR APPROVED EQUIVALENT EQUAL.

SHOPPING CENTER RENDERING

