

15900 LEE LAND ROAD (TARGET WAREHOUSE)

Specific Design Plan Amendment

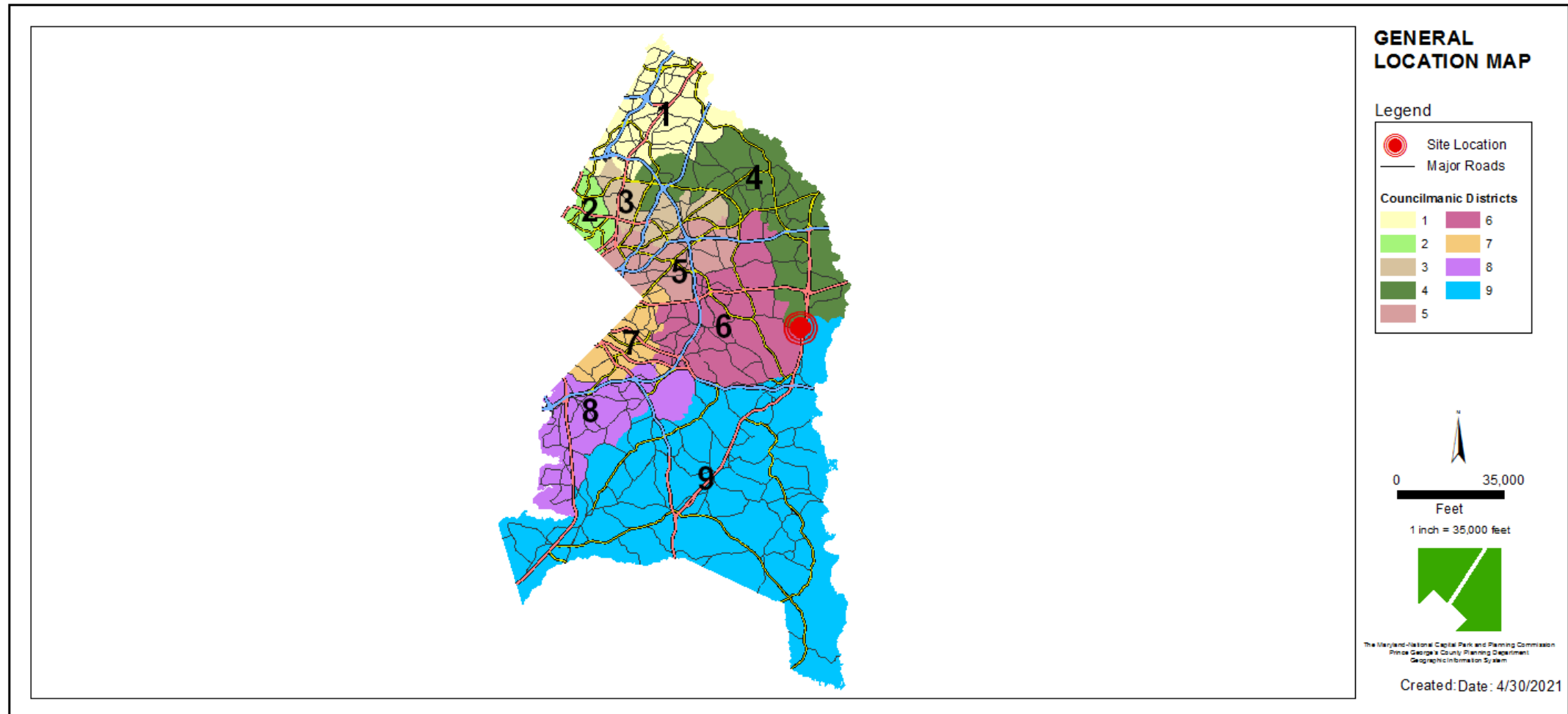
Staff Recommendation: APPROVAL with conditions



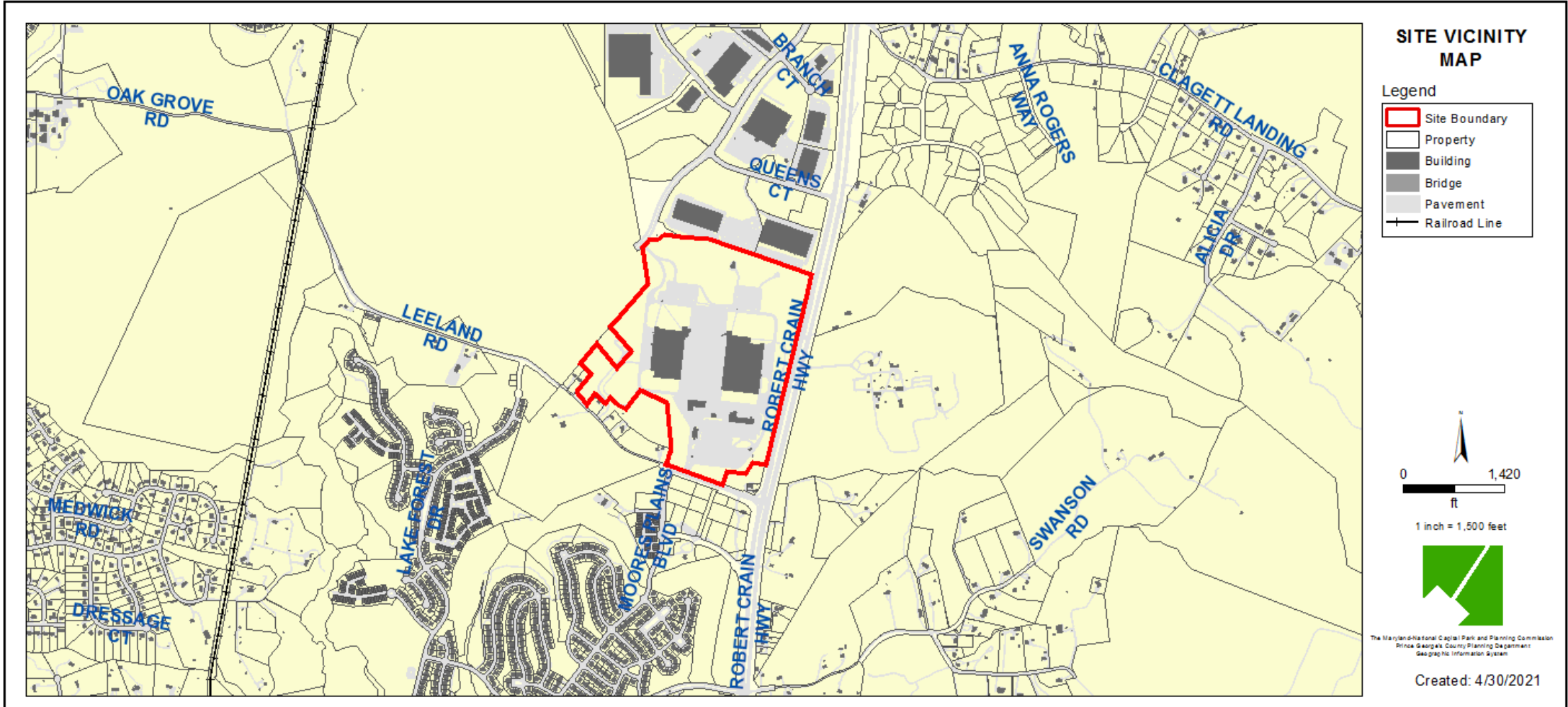
GENERAL LOCATION MAP

Council District: 04

Planning Area: 74A

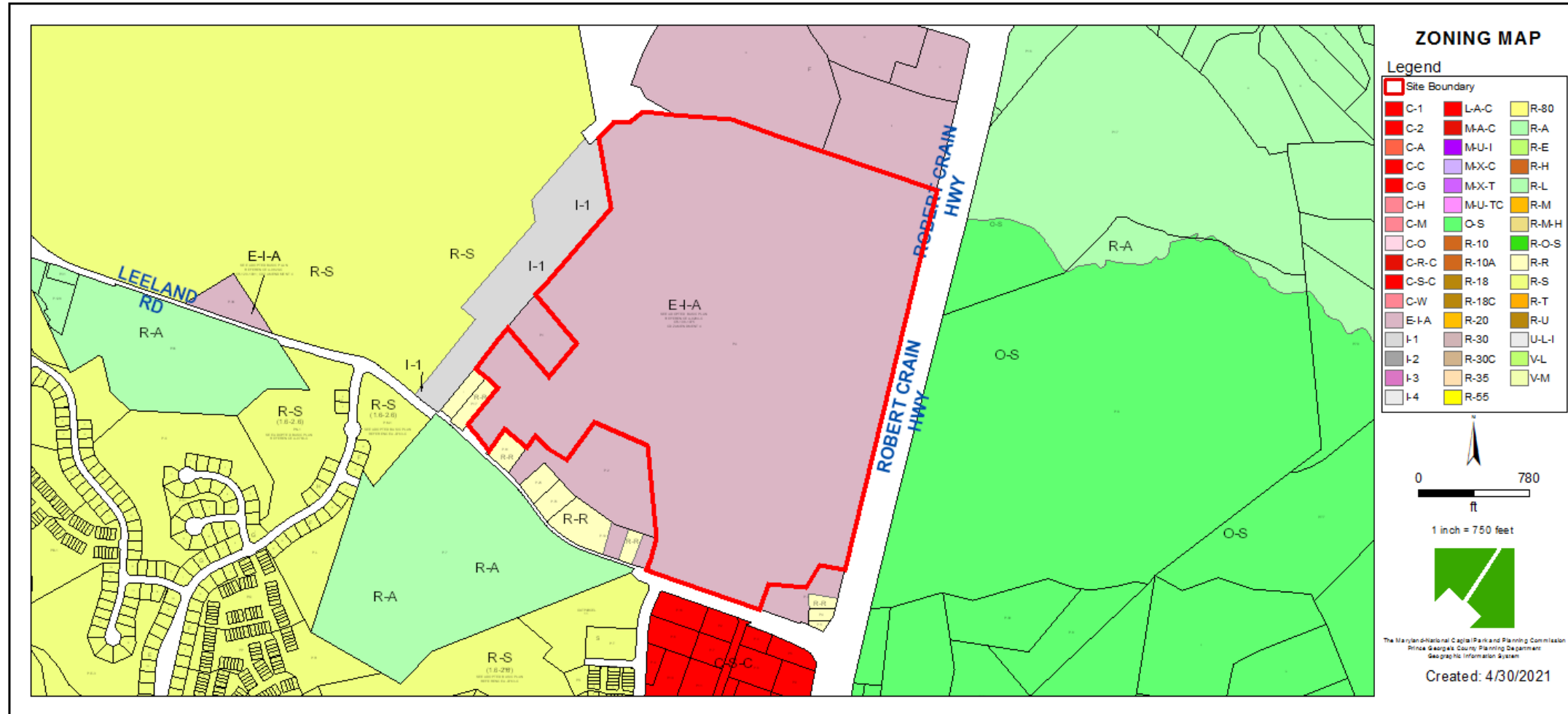


SITE VICINITY MAP



ZONING MAP

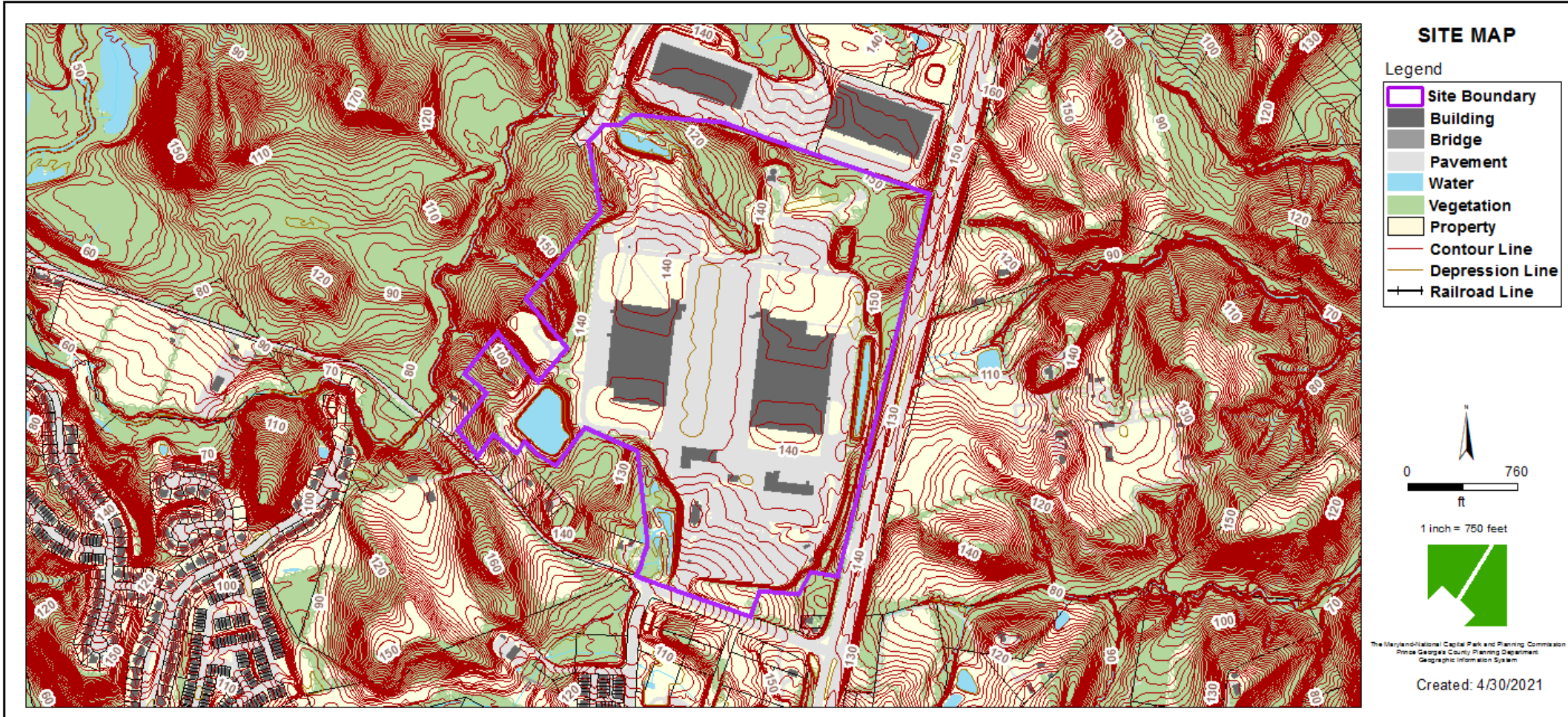
Property Zone: Employment and Institutional Area (E-I-A)



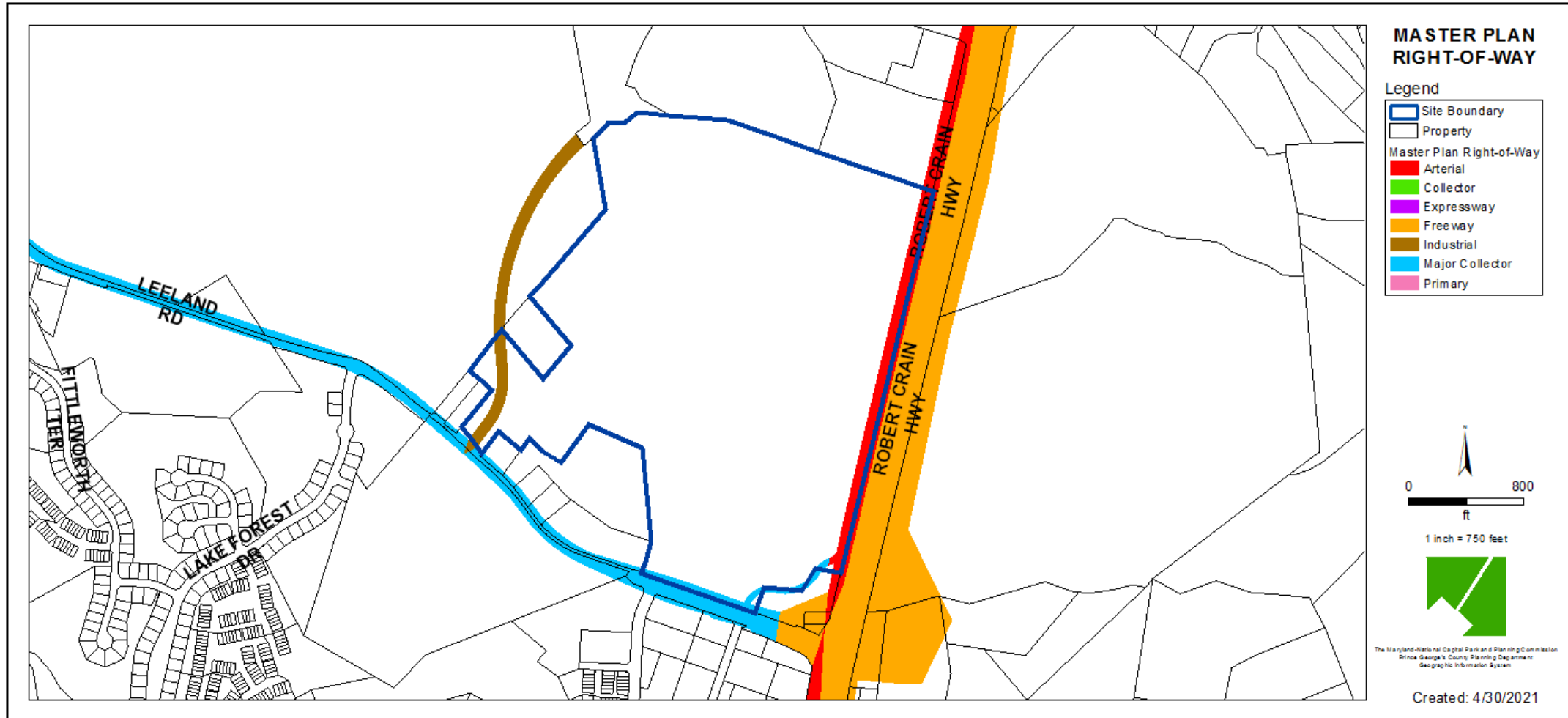
AERIAL MAP



SITE MAP



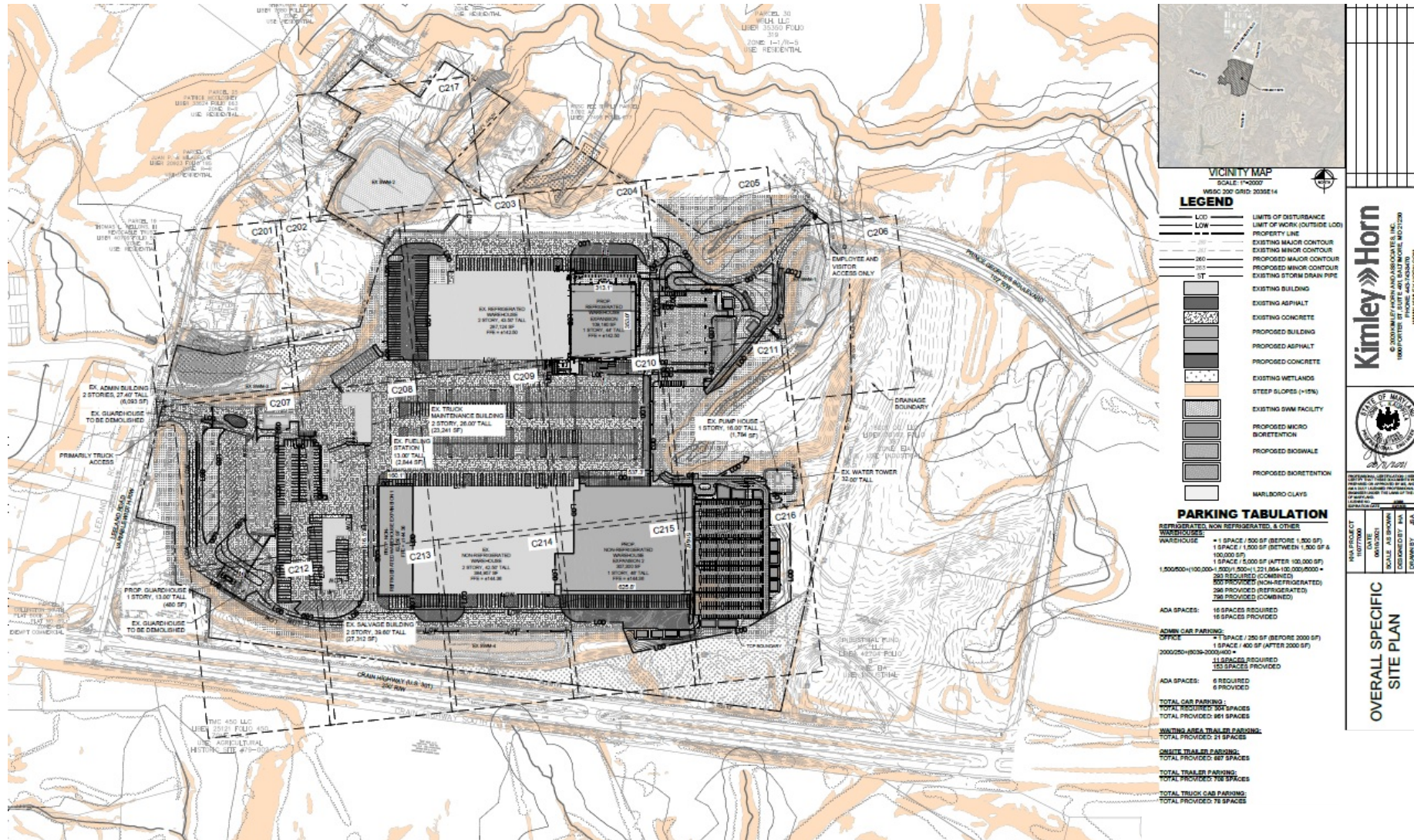
MASTER PLAN RIGHT-OF-WAY MAP



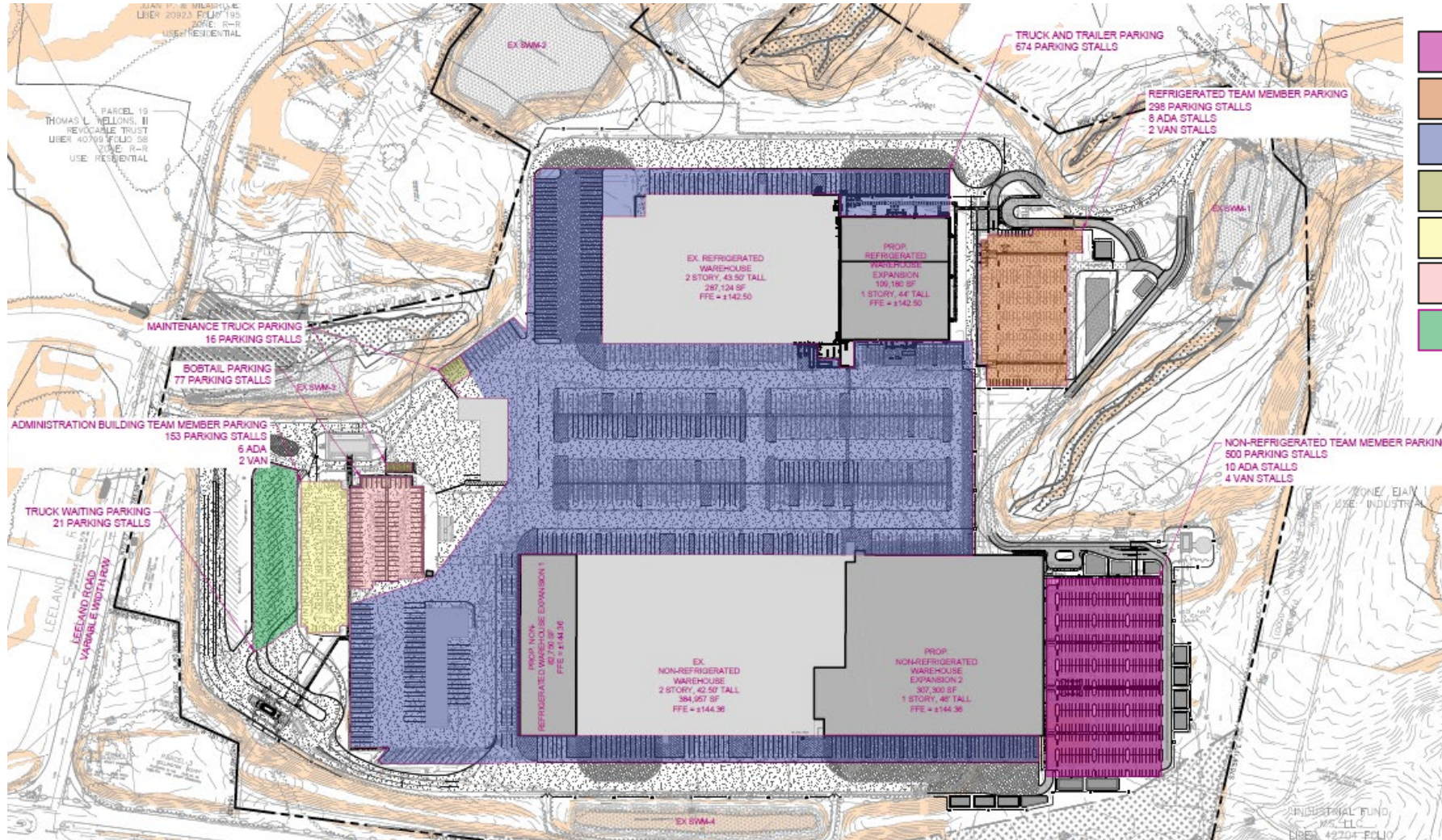
BIRD'S-EYE VIEW OF OVERALL SITE



OVERALL SITE PLAN



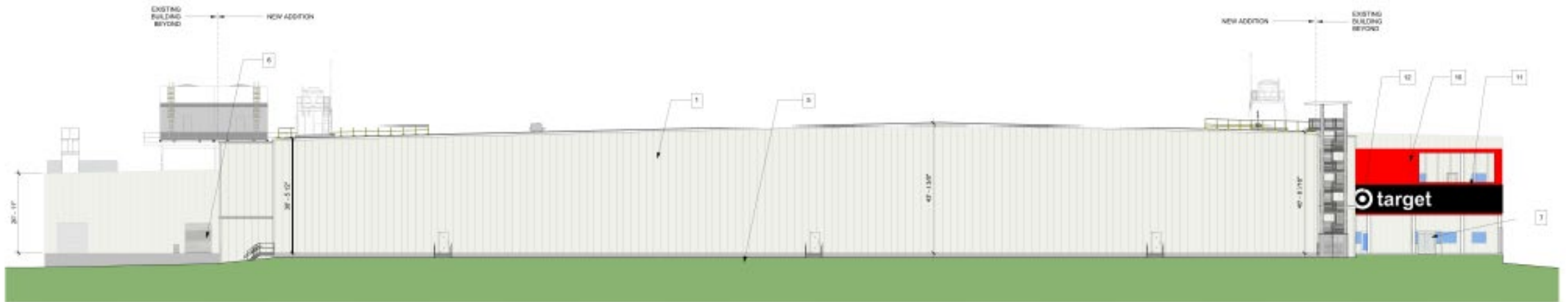
PARKING



REFRIGERATED WAREHOUSE ADDITION ELEVATIONS – NORTH AND SOUTH

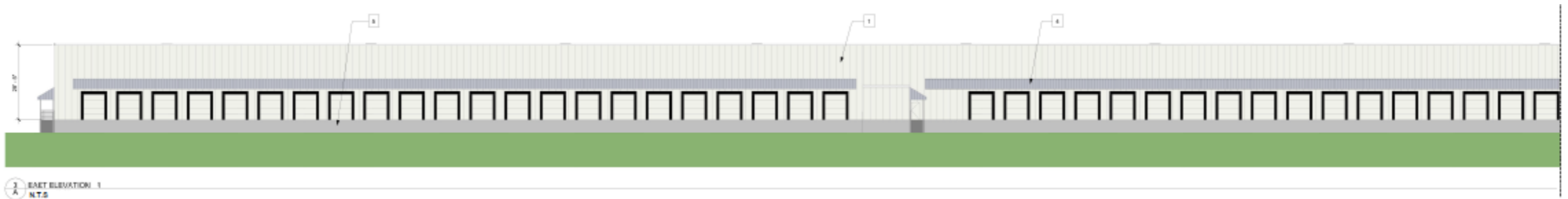
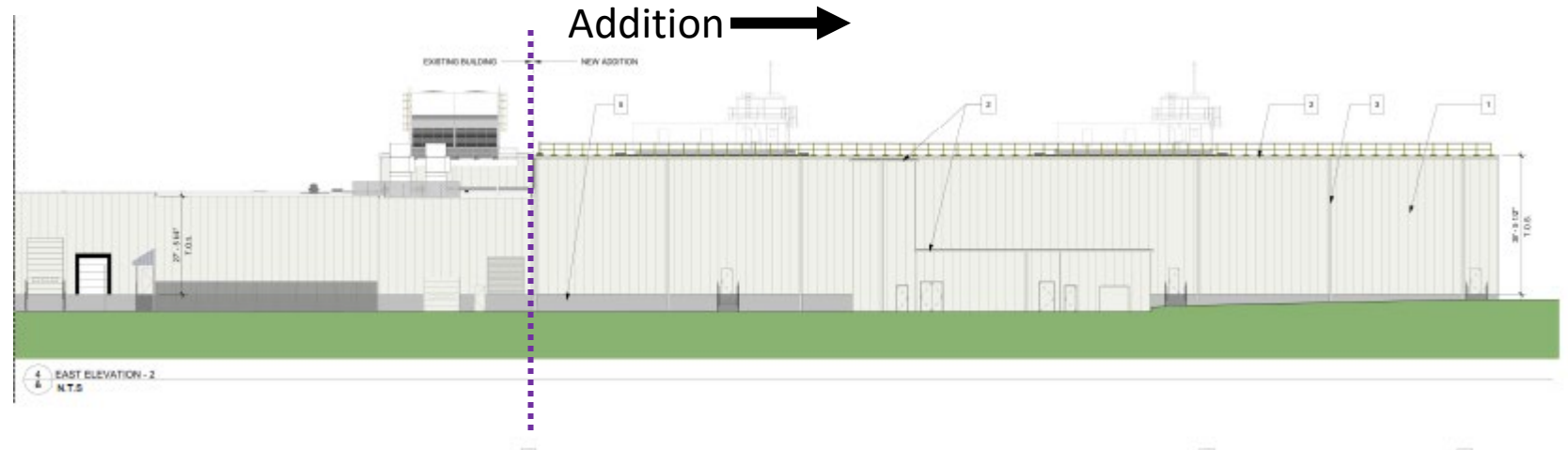


2
A SOUTH ELEVATION
N.T.S.

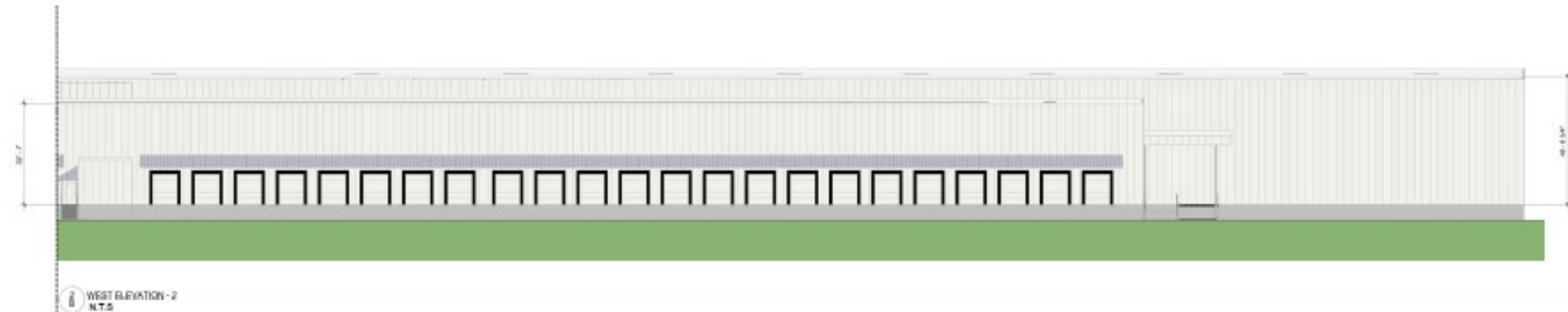
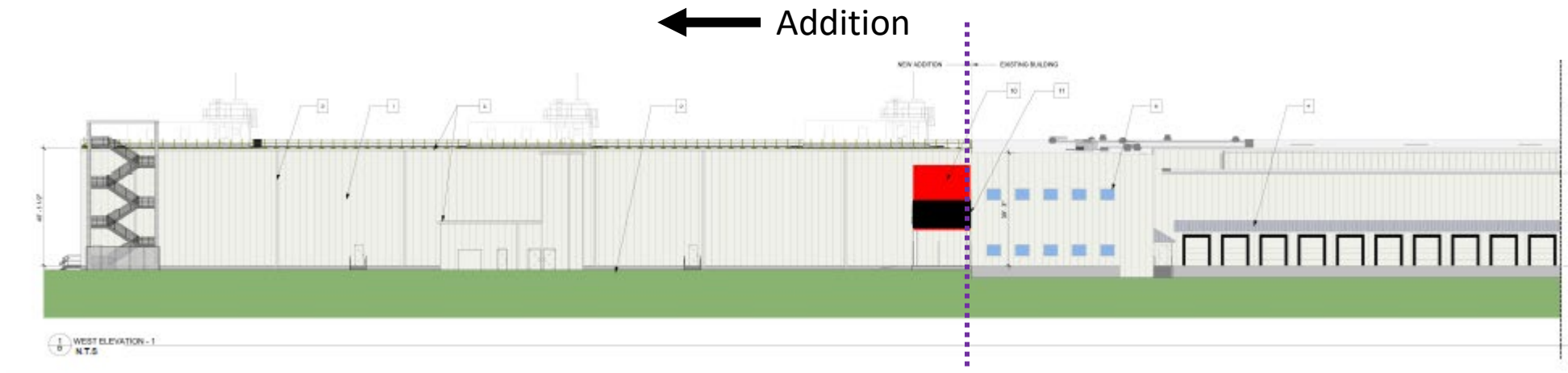


1
A NORTH ELEVATION
N.T.S.

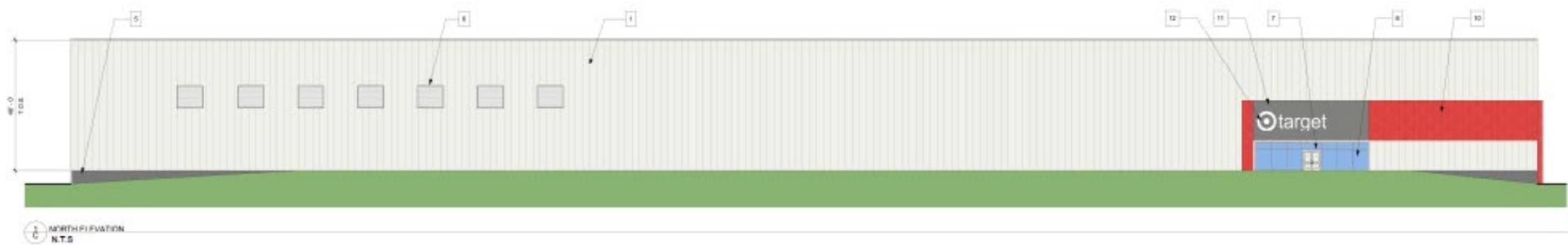
REFRIGERATED WAREHOUSE ADDITION ELEVATIONS - EAST



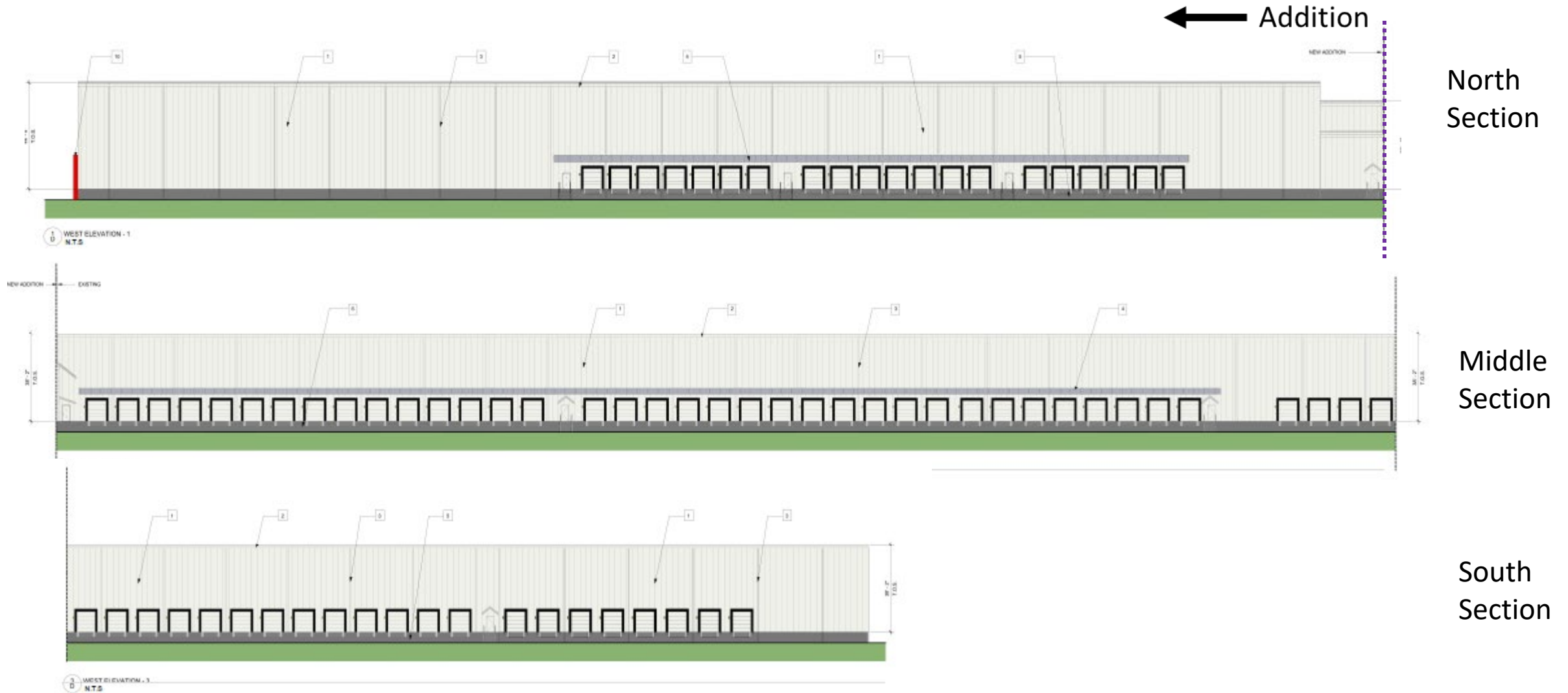
REFRIGERATED WAREHOUSE ADDITION ELEVATIONS- WEST



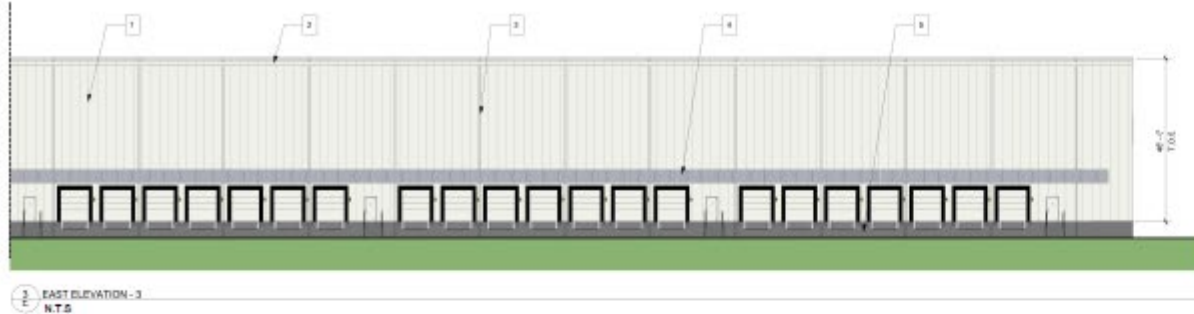
NON-REFRIGERATED WAREHOUSE ELEVATIONS- NORTH AND SOUTH



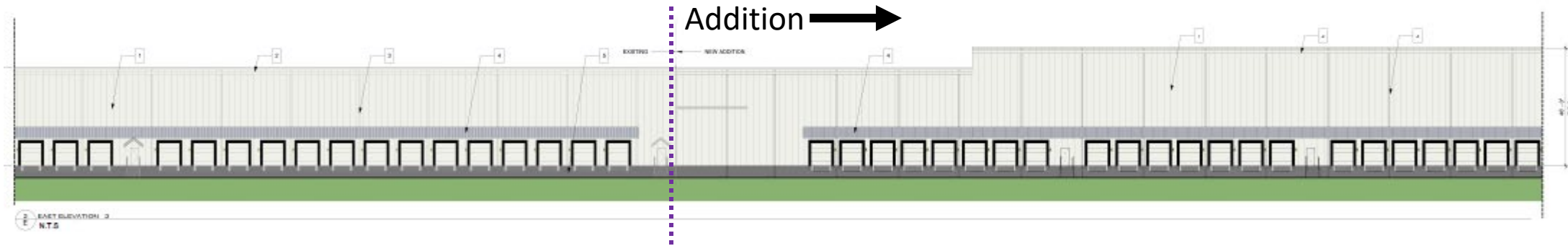
NON-REFRIGERATED WAREHOUSE ELEVATIONS- WEST



NON-REFRIGERATED WAREHOUSE ELEVATIONS- EAST



North
Section



Middle
Section



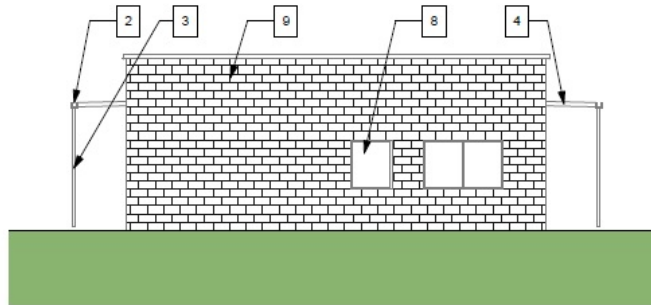
South
Section

GUARD HOUSE ELEVATIONS

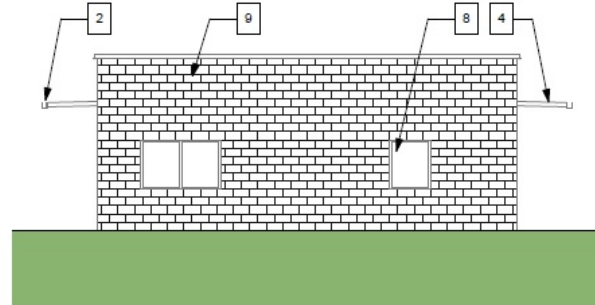
TARGET DISTRIBUTION CENTER

GUARD HOUSE ELEVATIONS

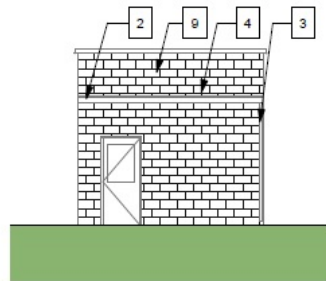
As indicated



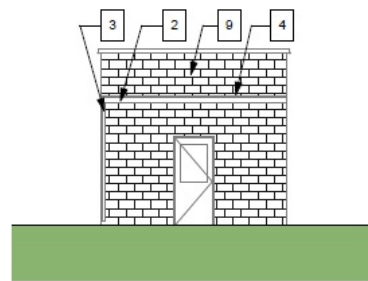
1
C WEST ELEVATION
1/8" = 1'-0"



2
C EAST ELEVATION
1/8" = 1'-0"



3
C NORTH ELEVATION
1/8" = 1'-0"

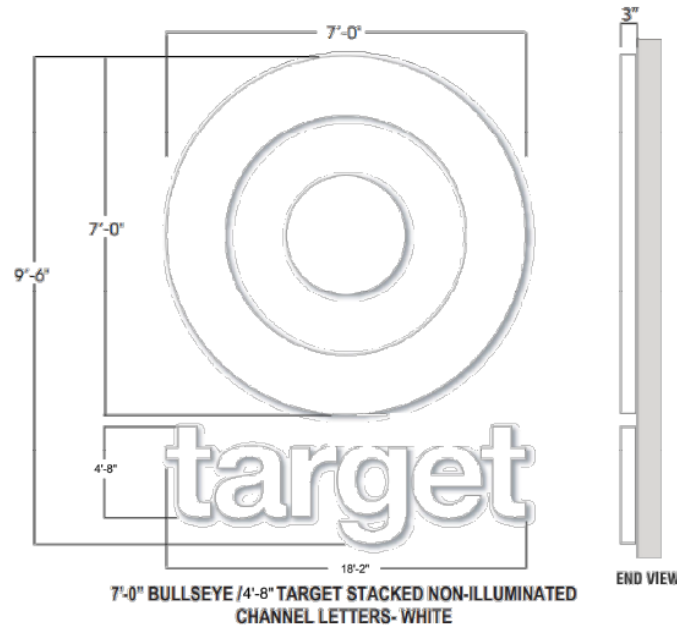
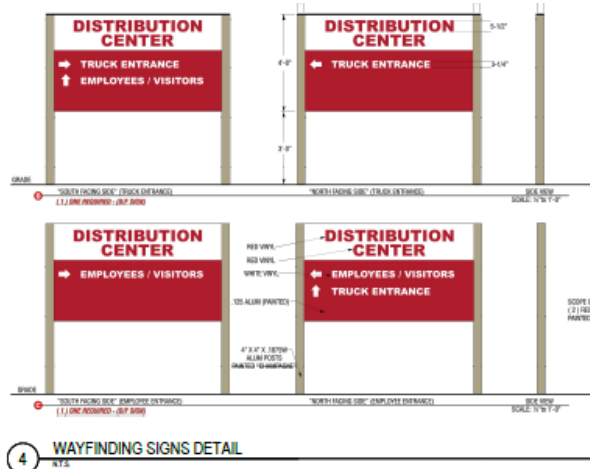


4
C SOUTH ELEVATION
1/8" = 1'-0"

ELEVATION KEY:	
1	INSULATED METAL PANEL
2	PREFINISHED METAL GUTTER
3	PREFINISHED METAL DOWNSPOUTS
4	PREFINISHED METAL CANOPY
5	CONCRETE FOUNDATION WALL
6	PREFINISHED METAL LOUVER
7	EMPLOYEE ENTRY
8	WINDOW OPENING
9	PAINTED CMU WALL



SIGNAGE



GENERAL SPECIFICATIONS:

Materials:
:840 alum. returns; :053 alum. backs

Return Depth:
3", Painted Gloss White

Faces Material:
Open

Material Thickness:
Open

Mounting:
Individual Mount

Boxed SQ. FT:
186.5 Sq. Ft.

Weight:
(TBD) lbs. (uncrated)

Wind Load:
35 PSF

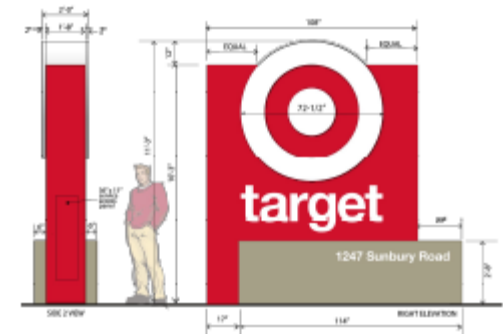
ELECTRICAL:

Illumination:
NON-Illuminated

COLORS:



Note: See elevations for proposed placement and orientation



STAFF RECOMMENDATION

APPROVAL with Conditions

- SDP-9710-02 with Five Conditions
- TCP2-067-96-09

Issues:

- Bicycle and Pedestrian Improvements
- Landscape and Lighting
- Signage
- Parking and Loading Tabulations