

# GAS LIGHT III SURFACE MINE

Special Exception

Type 2 Tree Conservation Plan TCP2-033-2024

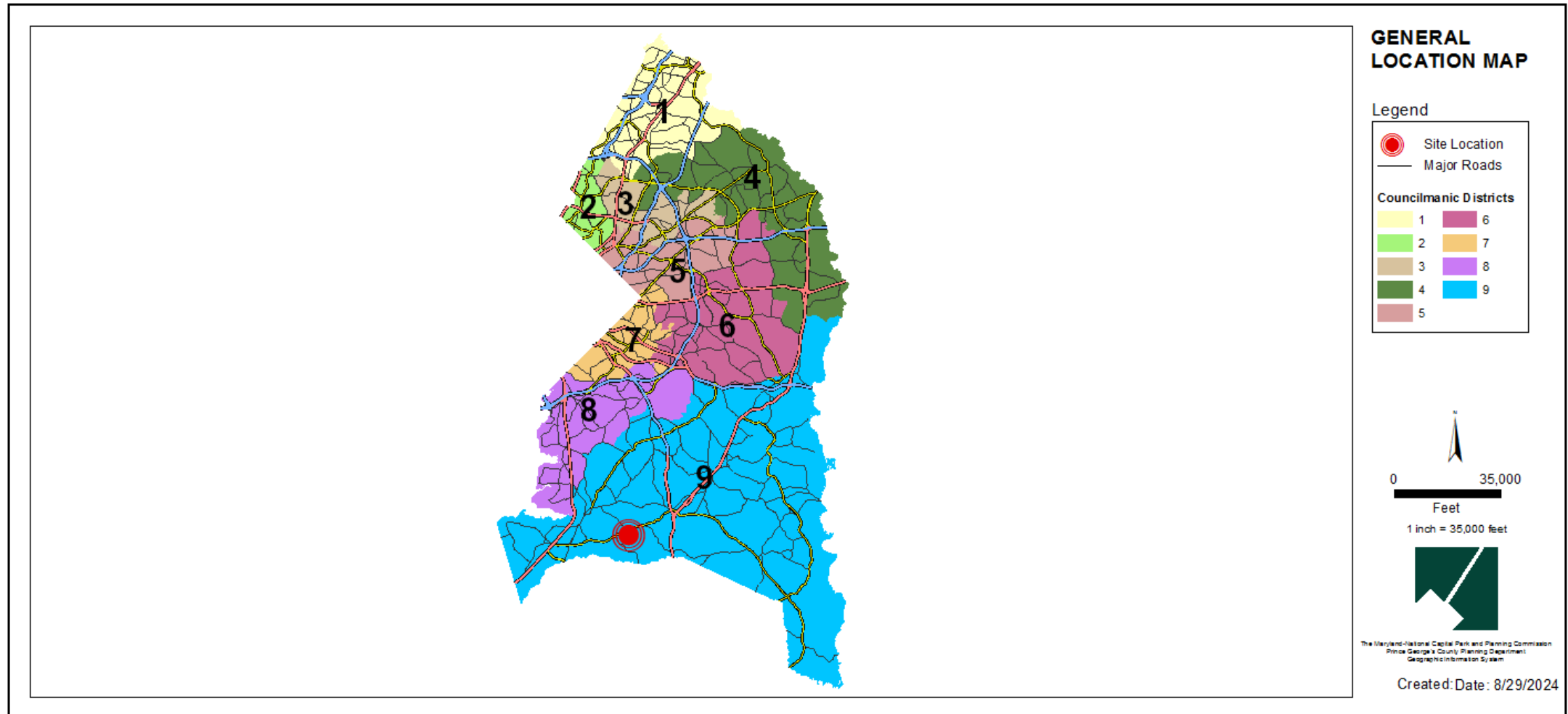
Staff Recommendation: APPROVAL with conditions



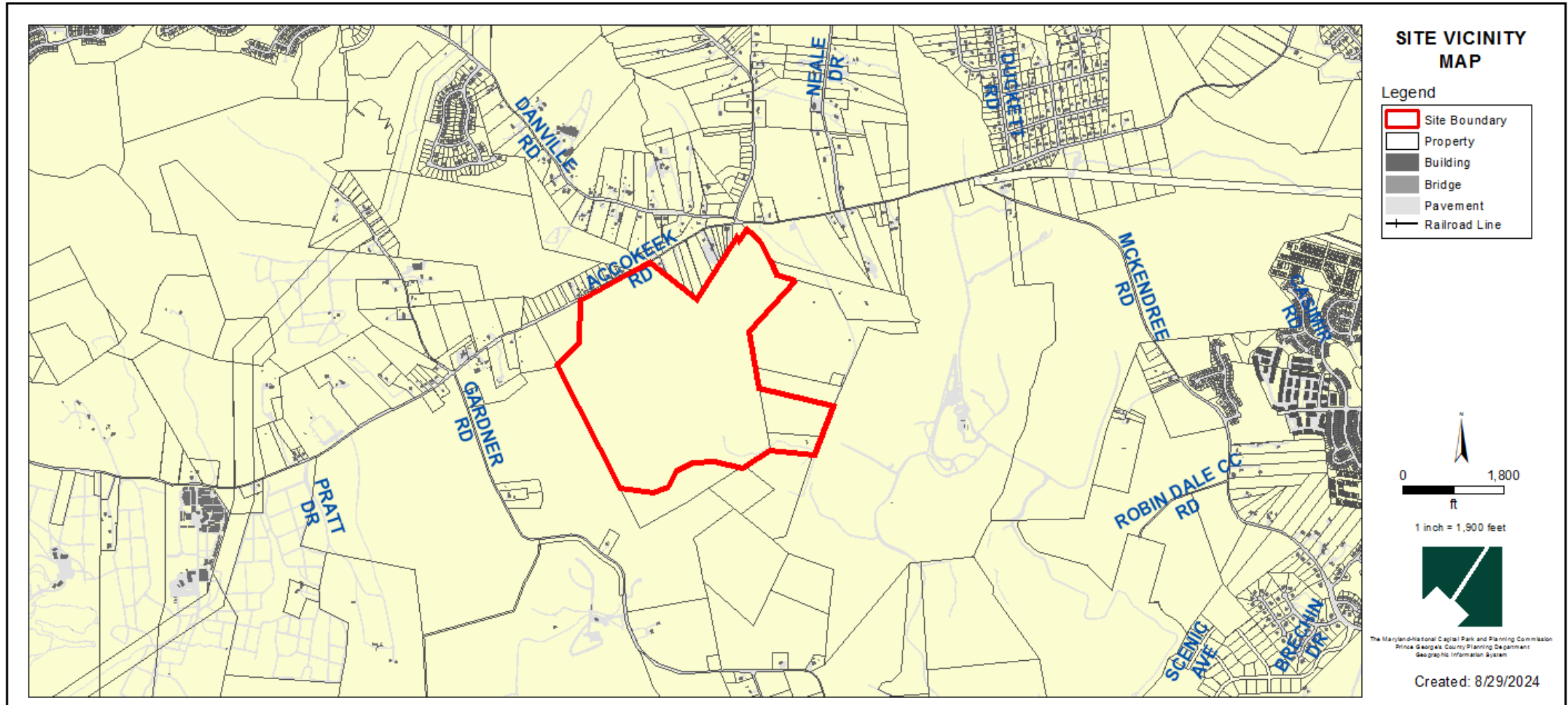
# GENERAL LOCATION MAP

Council District: 09

Planning Area: 85A

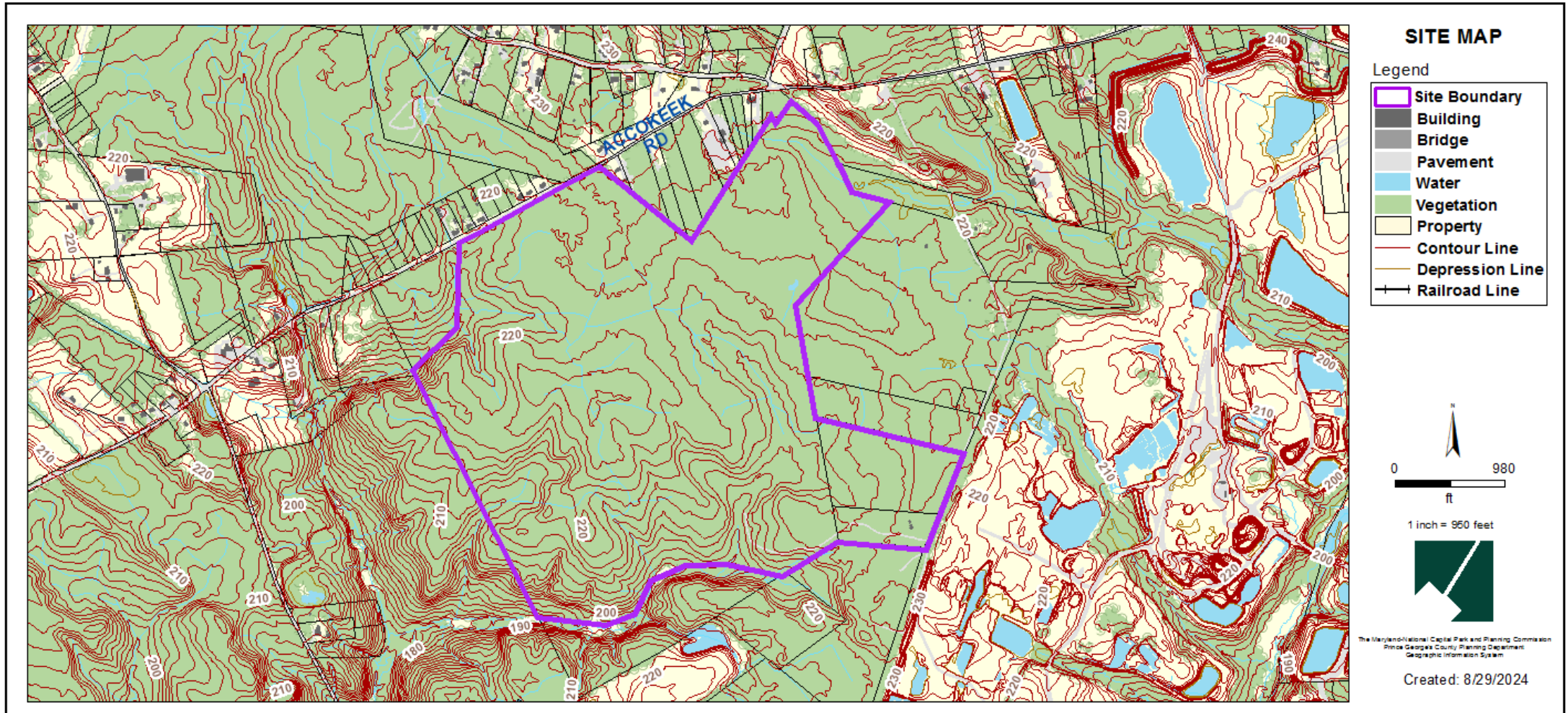


# SITE VICINITY MAP

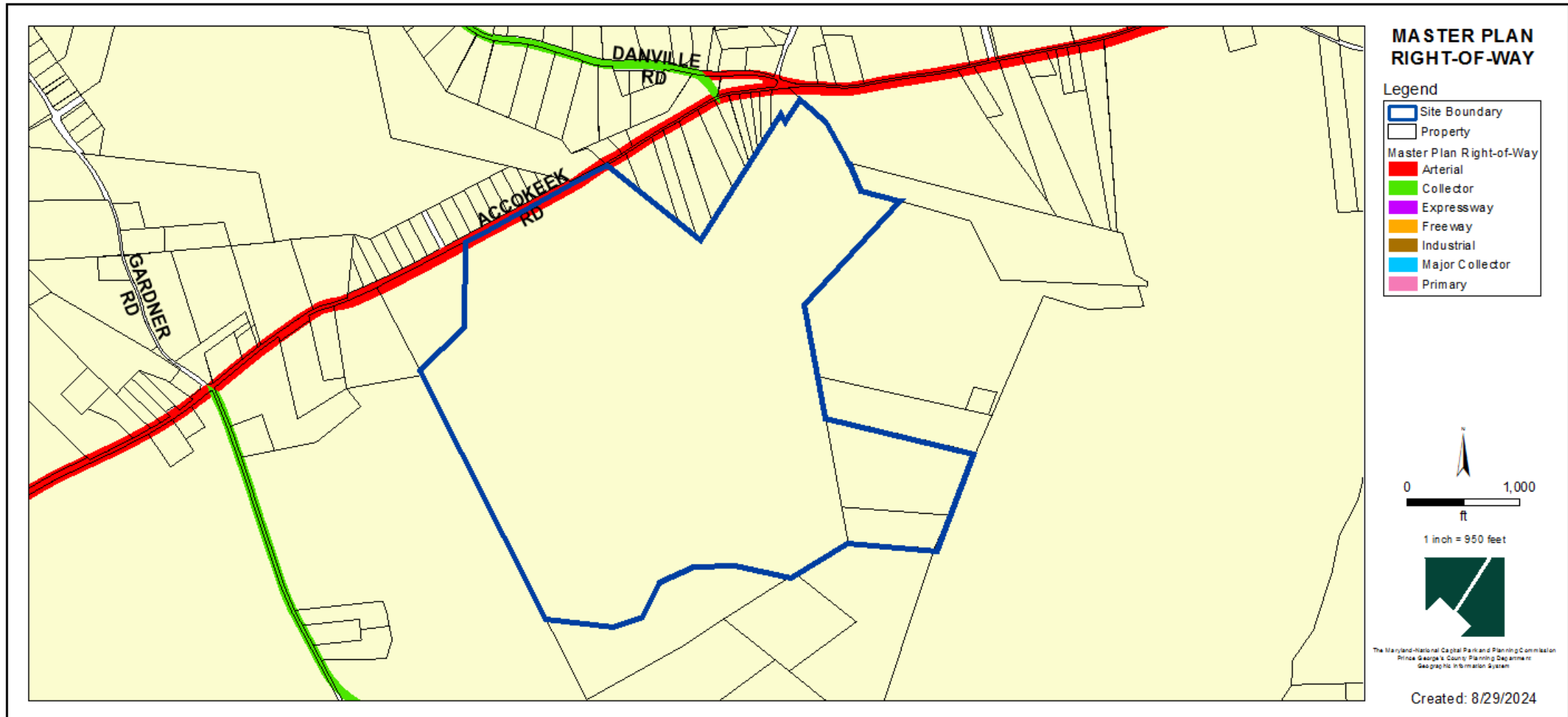




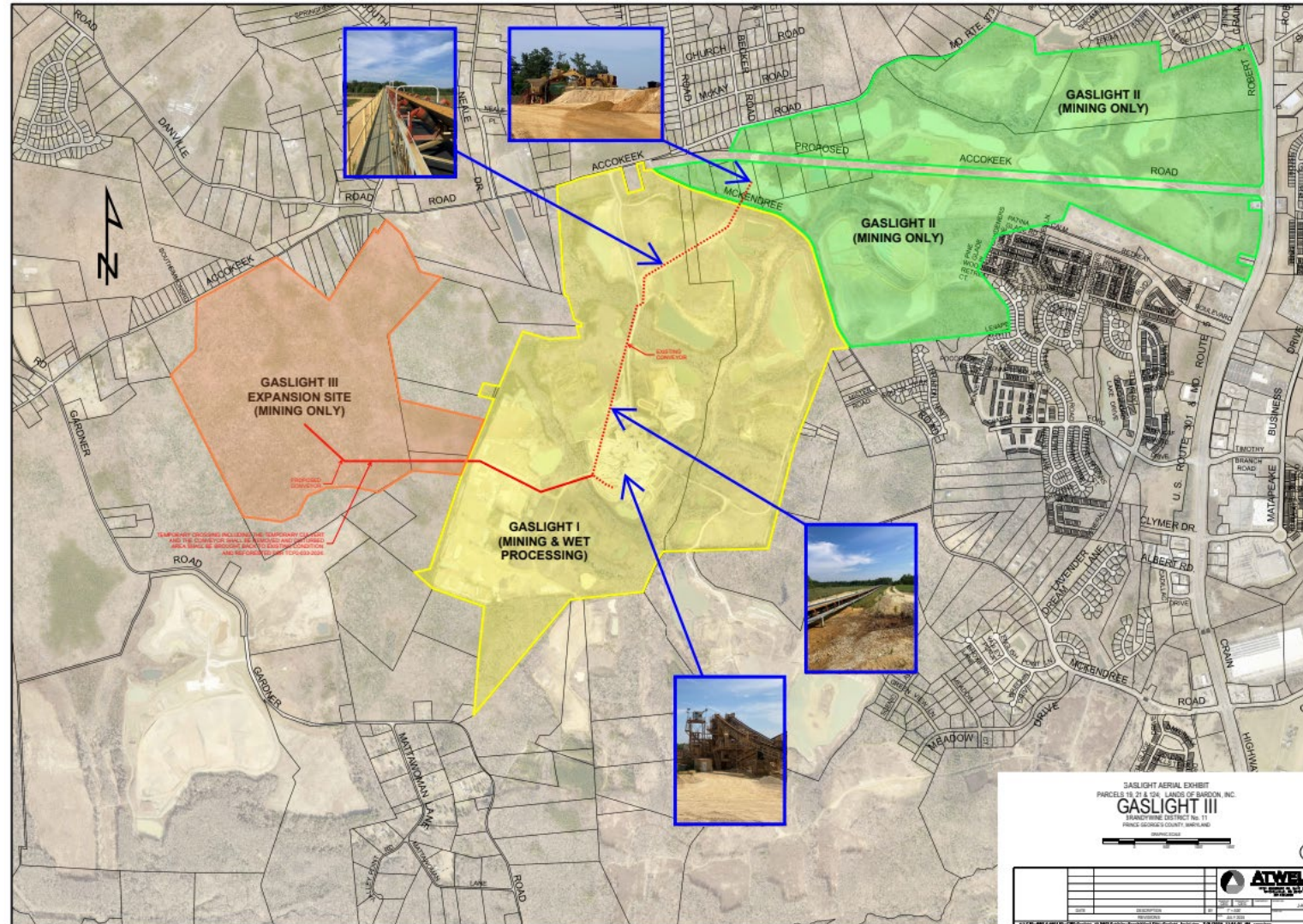
# SITE MAP



# MASTER PLAN RIGHT-OF-WAY MAP

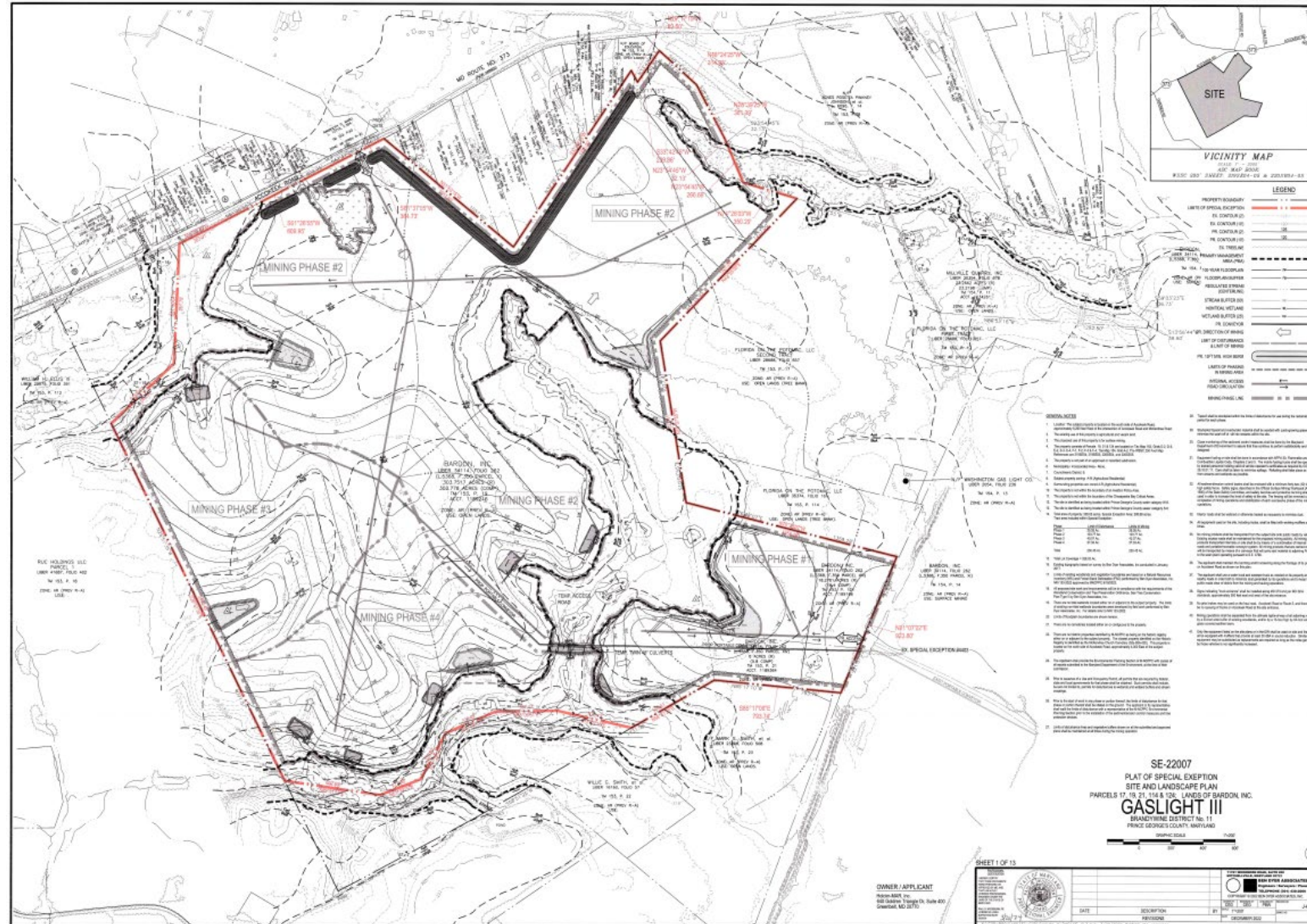


# GASLIGHT AERIAL EXHIBIT





# SPECIAL EXCEPTION





# STAFF RECOMMENDATION

## **APPROVAL** with conditions

- Special Exception SE-22007
- Type 2 Tree Conservation Plan TCP2-033-2024

## **Issues:**

None

## **Applicant Required Mailings:**

- Informational Mailing: 02/19/2024
- Acceptance Mailing: 06/17/2024