

# ESPIRALES MONTESSORI BILINGUAL CHILDCARE CENTER

Special Exception

Companion/Parent Case (if applicable) and case number

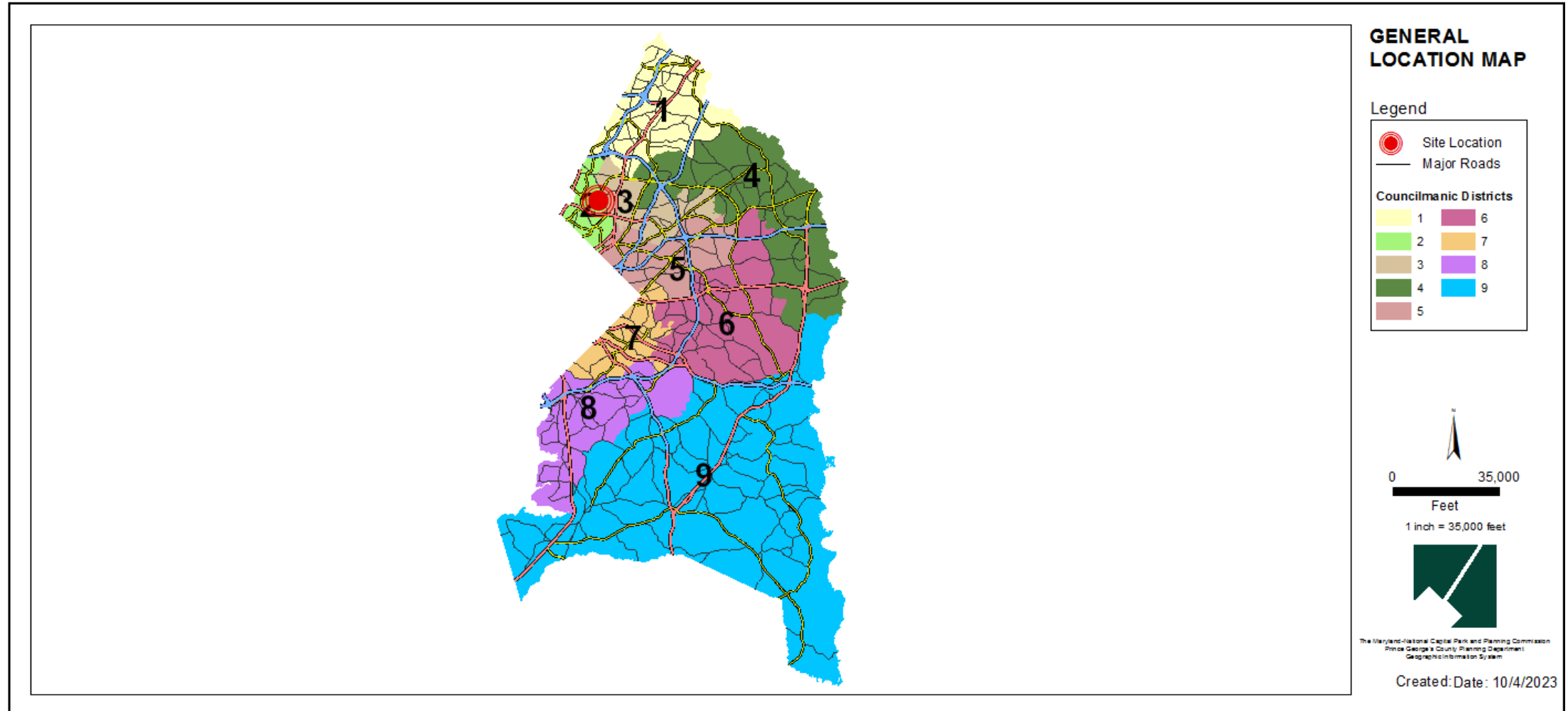
Staff Recommendation: [APPROVAL/APPROVAL with conditions/DISAPPROVAL]



# GENERAL LOCATION MAP

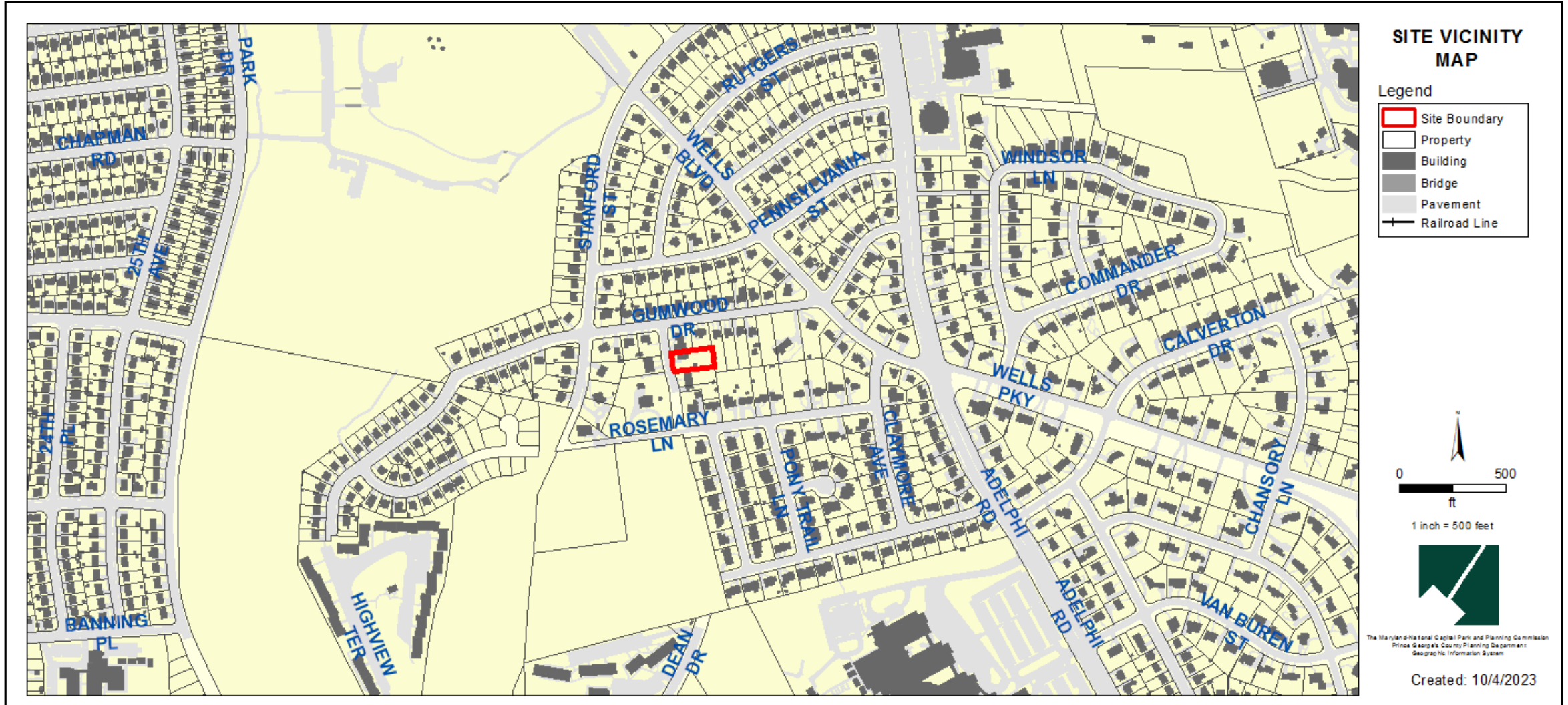
Council District: 06

Planning Area: 75A





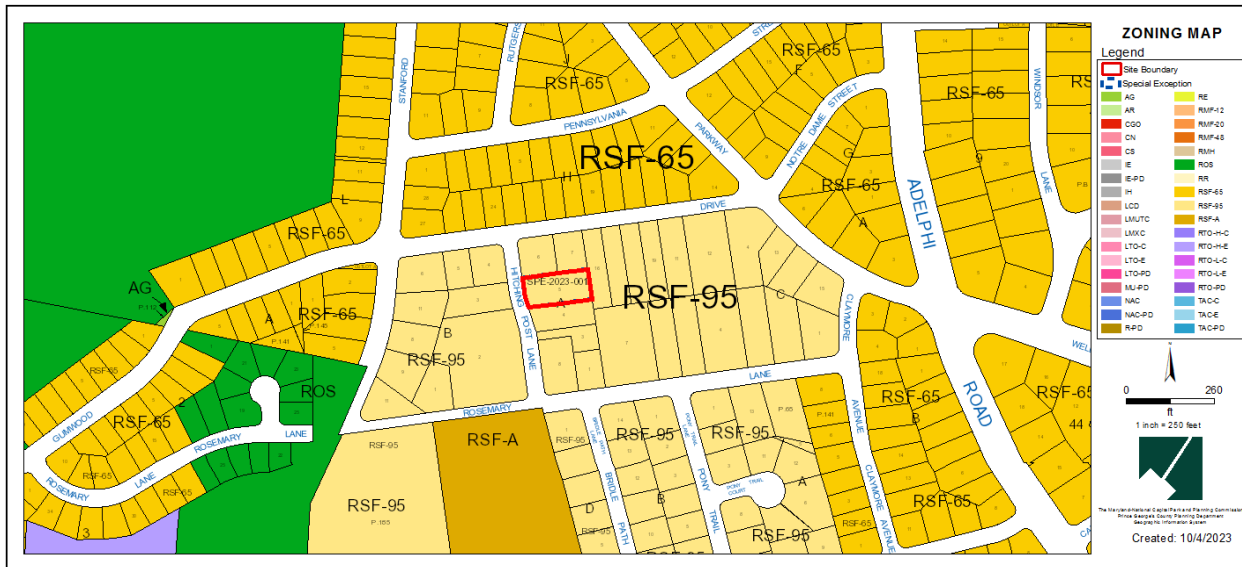
# SITE VICINITY MAP



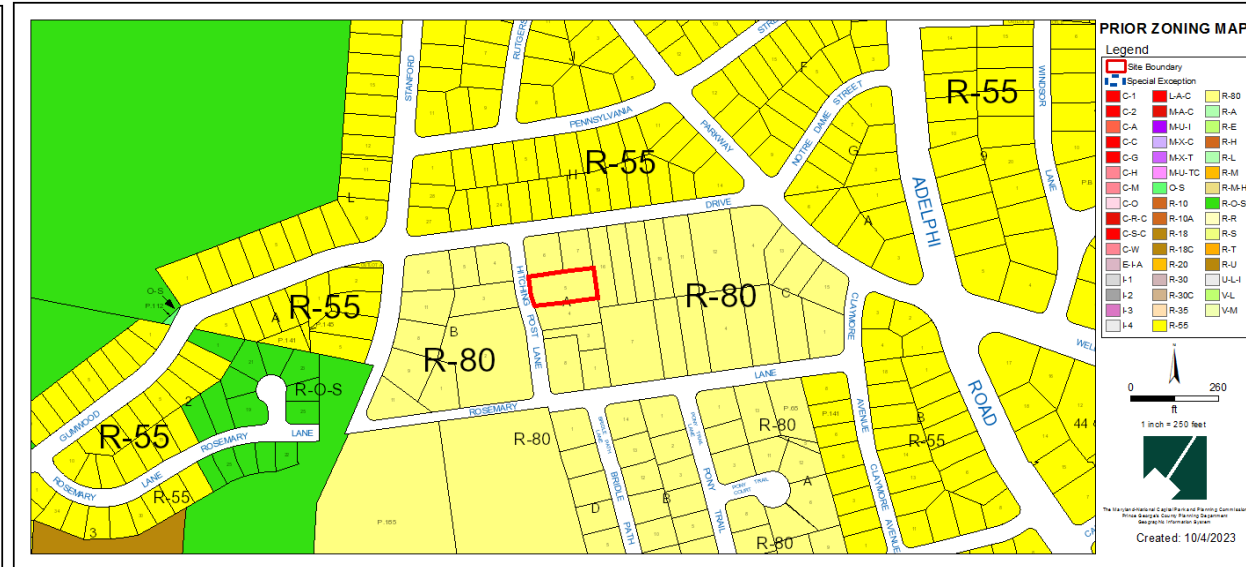
# ZONING MAP (CURRENT AND PRIOR)

Property Zone: X-#

CURRENT ZONING MAP

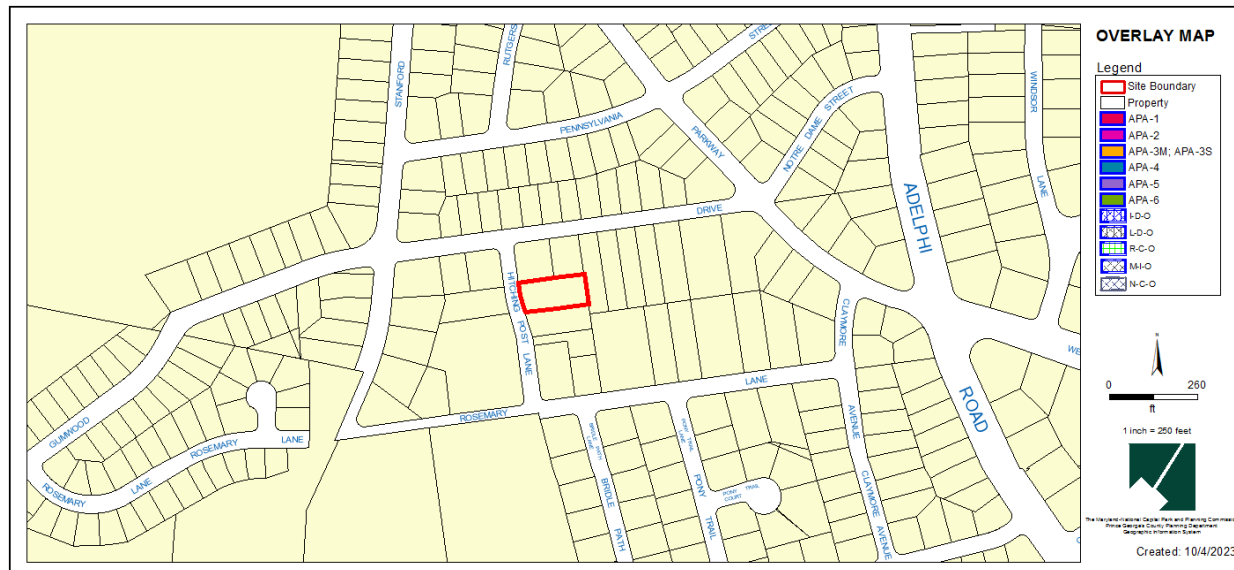


PRIOR ZONING MAP

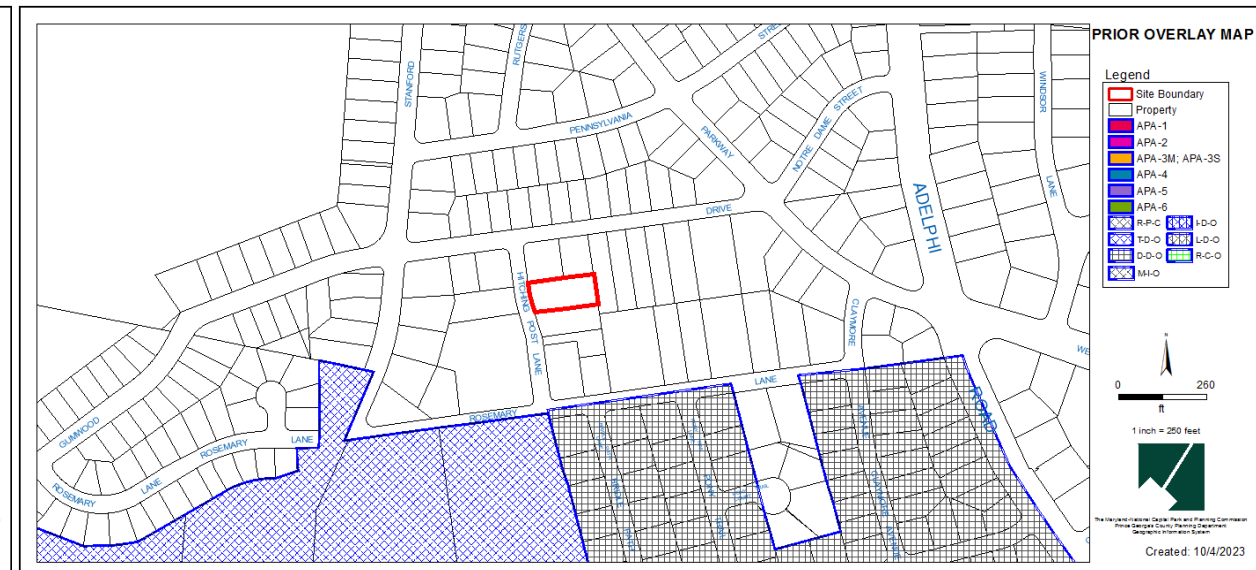


# OVERLAY MAP (CURRENT AND PRIOR)

CURRENT OVERLAY MAP



PRIOR OVERLAY MAP





# AERIAL MAP



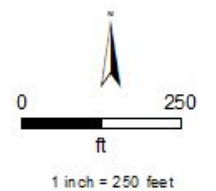
## AERIAL MAP

### Legend

Site Boundary

Property

IMAGERY FROM  
May 2023

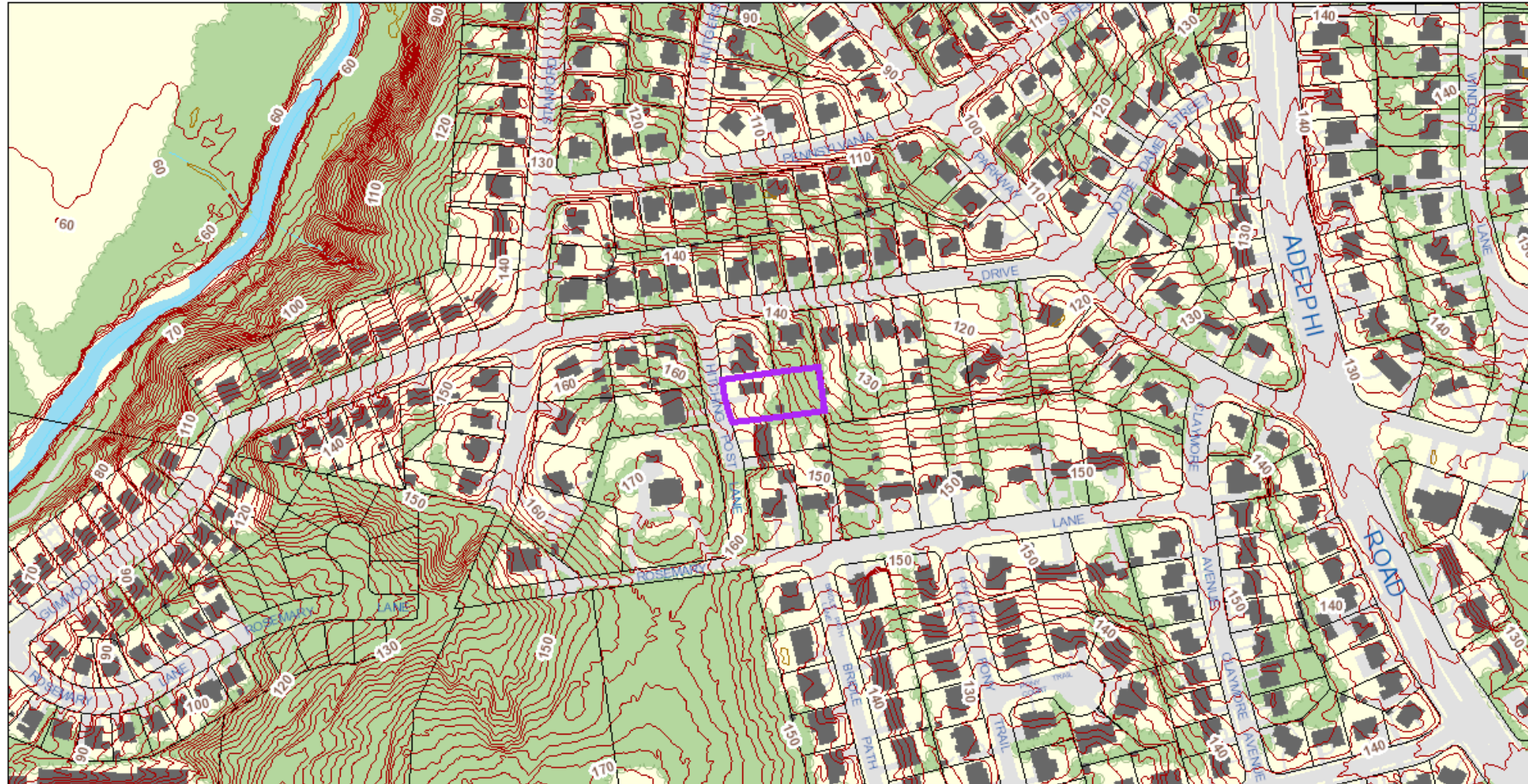


The Maryland-National Capital Park and Planning Commission  
Prince George's County Planning Department  
Geographic Information System

Created: 10/4/2023



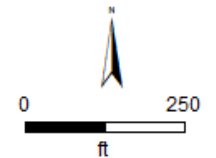
# SITE MAP



## SITE MAP

### Legend

- Site Boundary
- Building
- Bridge
- Pavement
- Water
- Vegetation
- Property
- Contour Line
- Depression Line
- Railroad Line



1 inch = 250 feet



The Maryland-National Capital Park and Planning Commission  
Prince George's County Planning Department  
Geographic Information System

Created: 10/4/2023



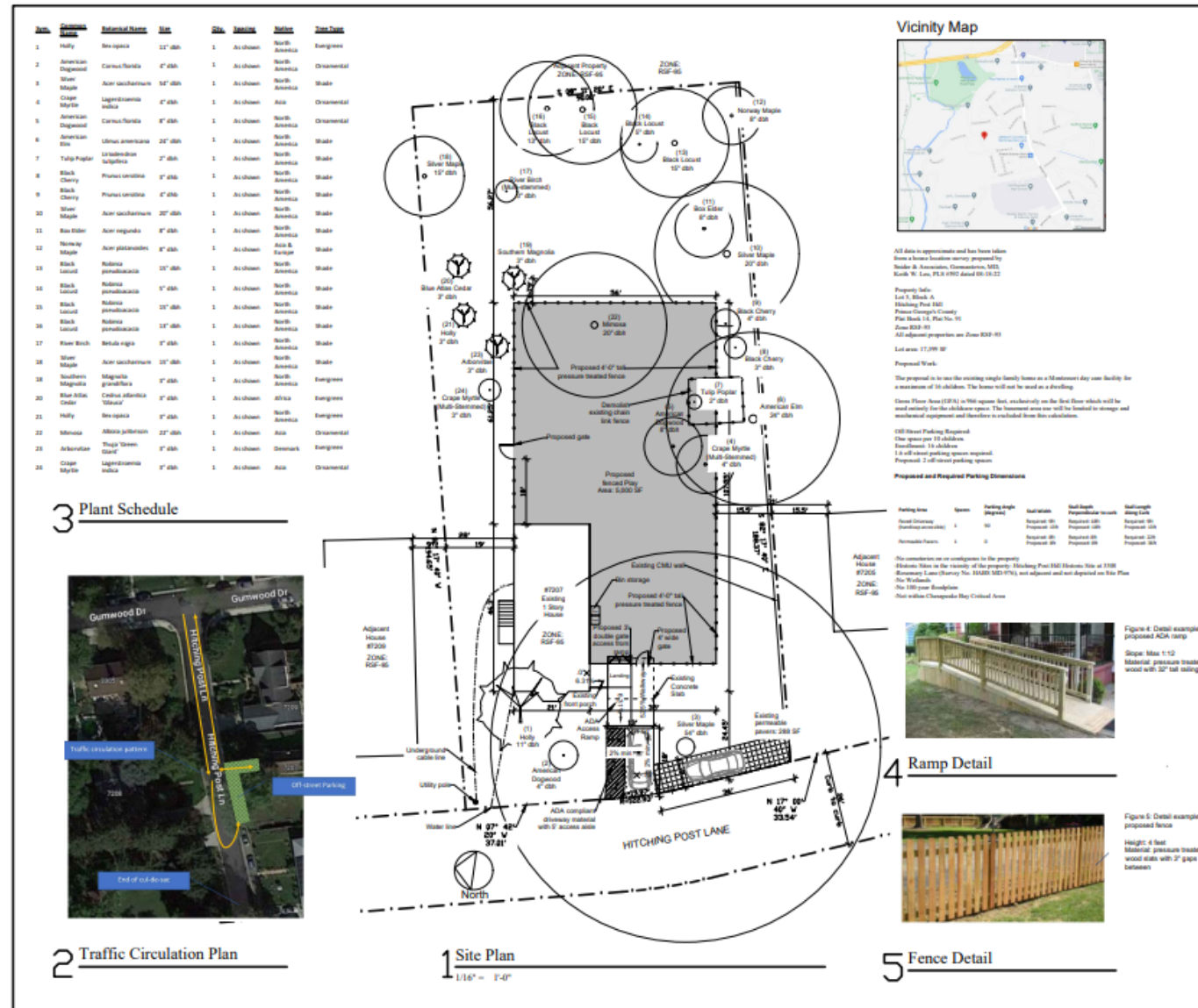


# BIRD'S-EYE VIEW WITH APPROXIMATE SITE BOUNDARY OUTLINED



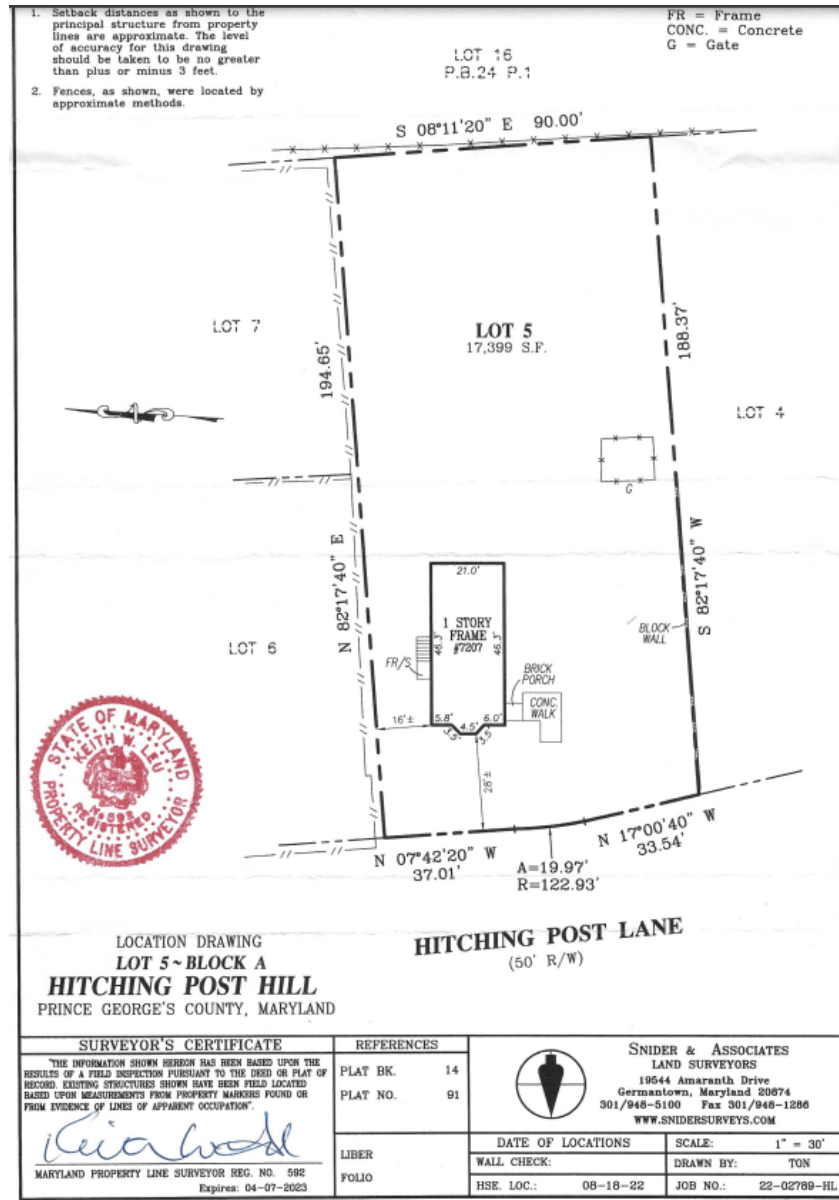


# SITE MAP





# SITE PLAN



# STAFF RECOMMENDATION

[**APPROVAL**/**APPROVAL** with conditions/**DISAPPROVAL**/**DISCUSSION**]

- Conditions
- Conditions

[**Major/Minor**] Issues:

- 
- 
- 

**Applicant Required Mailings:**

- 
- 
-