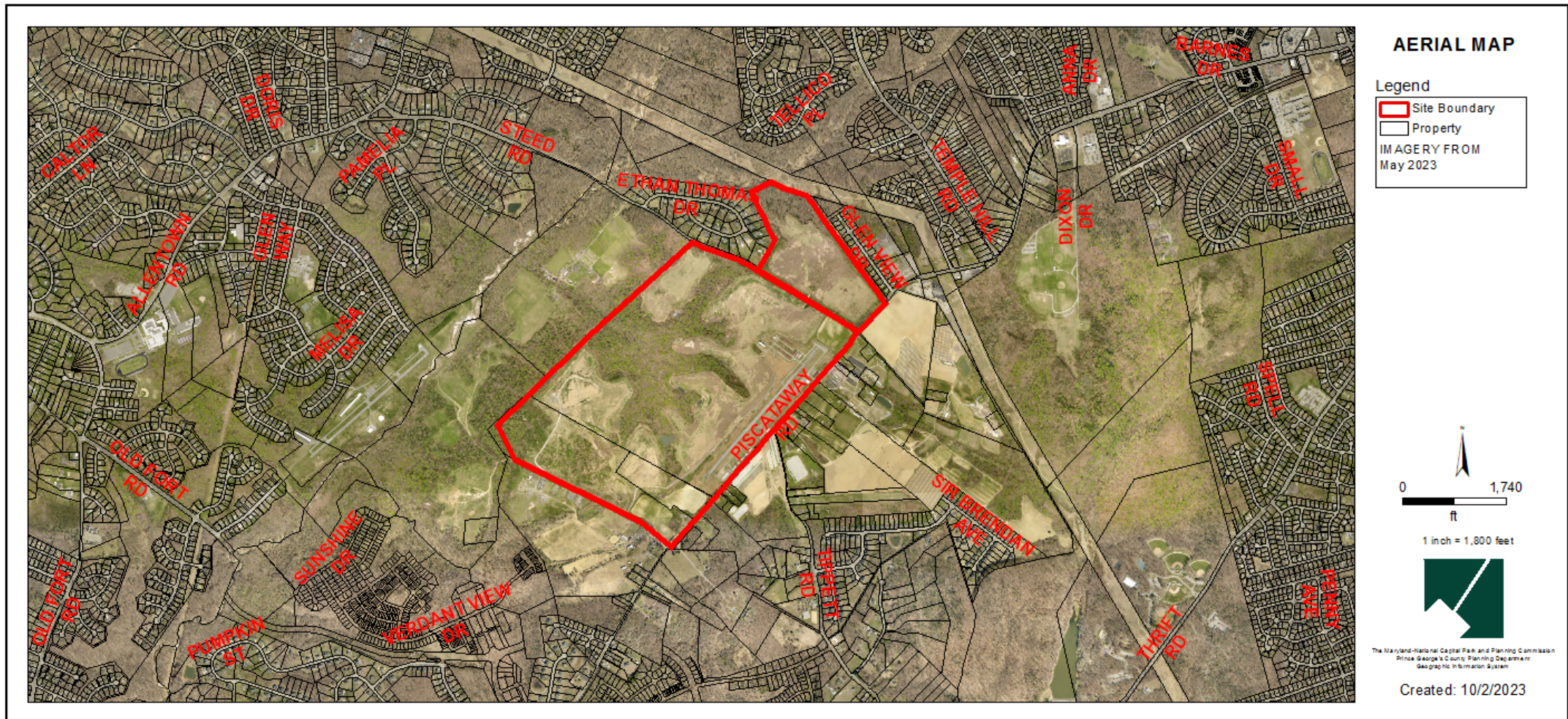


HYDE LANDING

Zoning Map Amendment

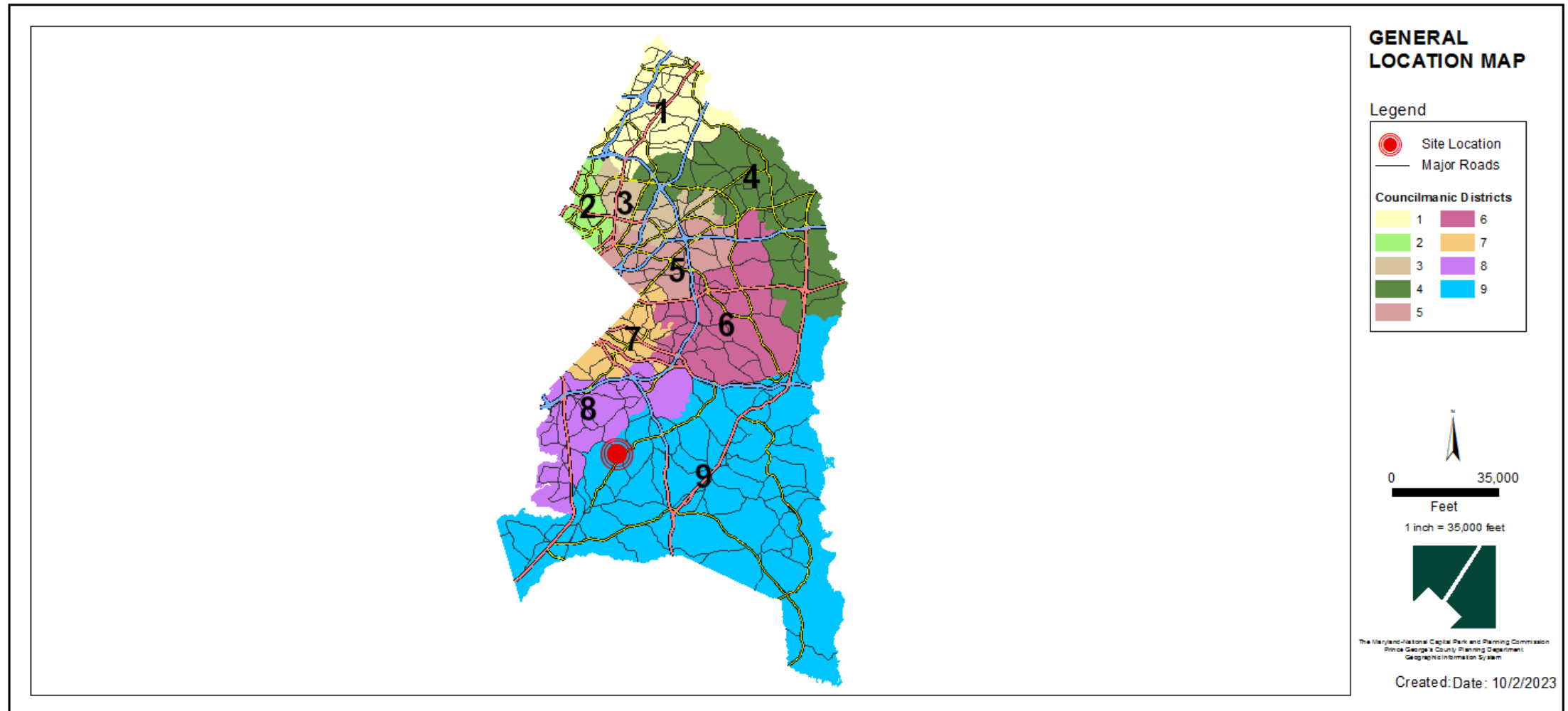
Staff Recommendation: APPROVAL with conditions



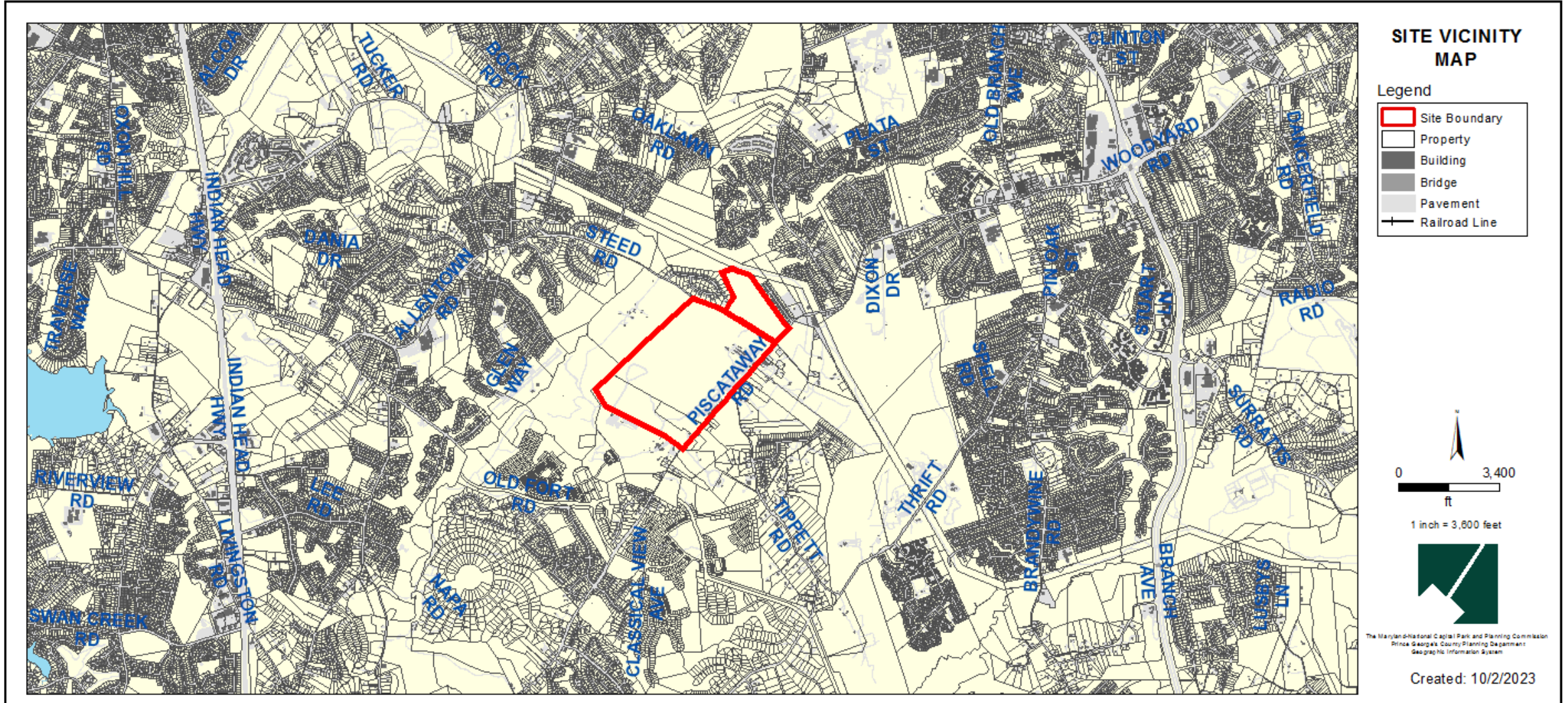
GENERAL LOCATION MAP

Council District: 09

Planning Area: 81B



SITE VICINITY MAP

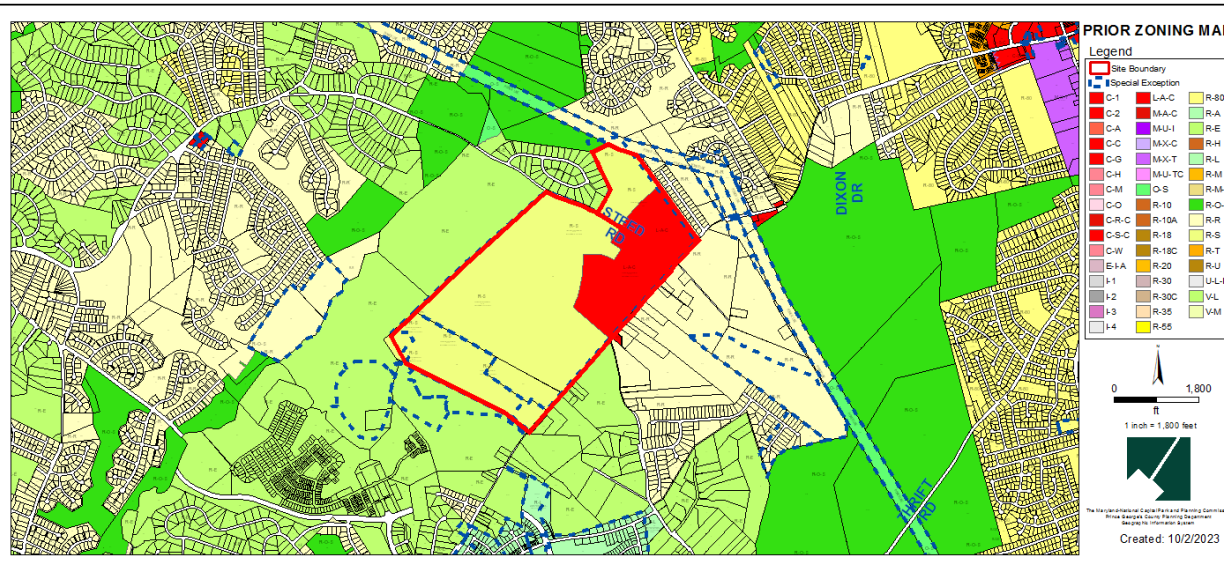


ZONING MAP (PRIOR AND CURRENT)

Property Zone: LCD

PRIOR ZONING MAP

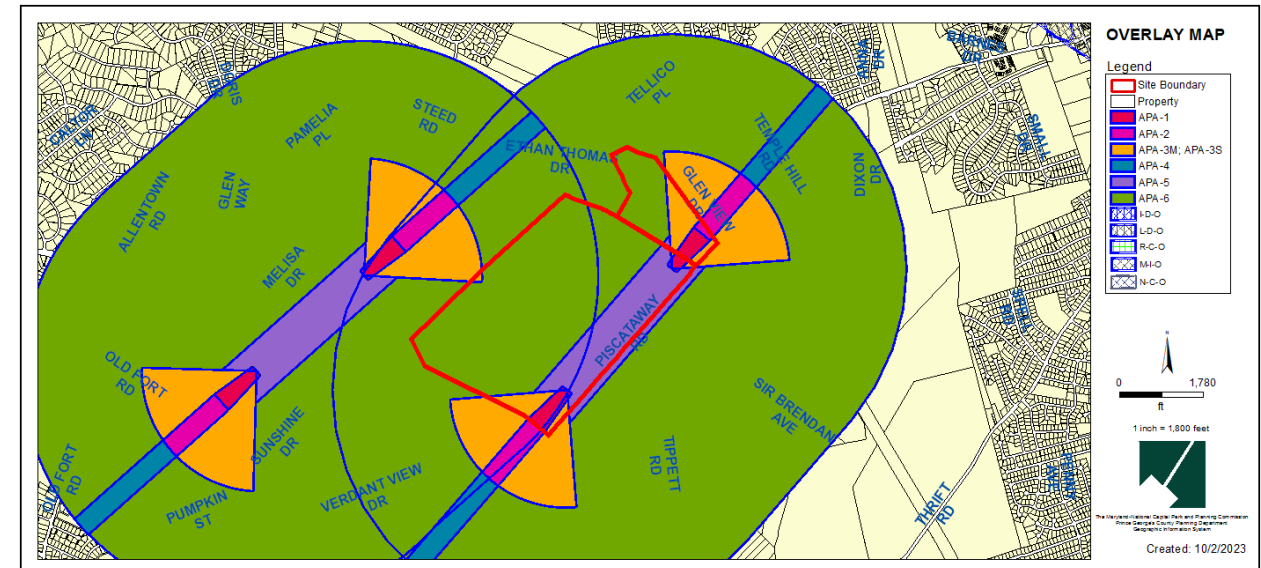
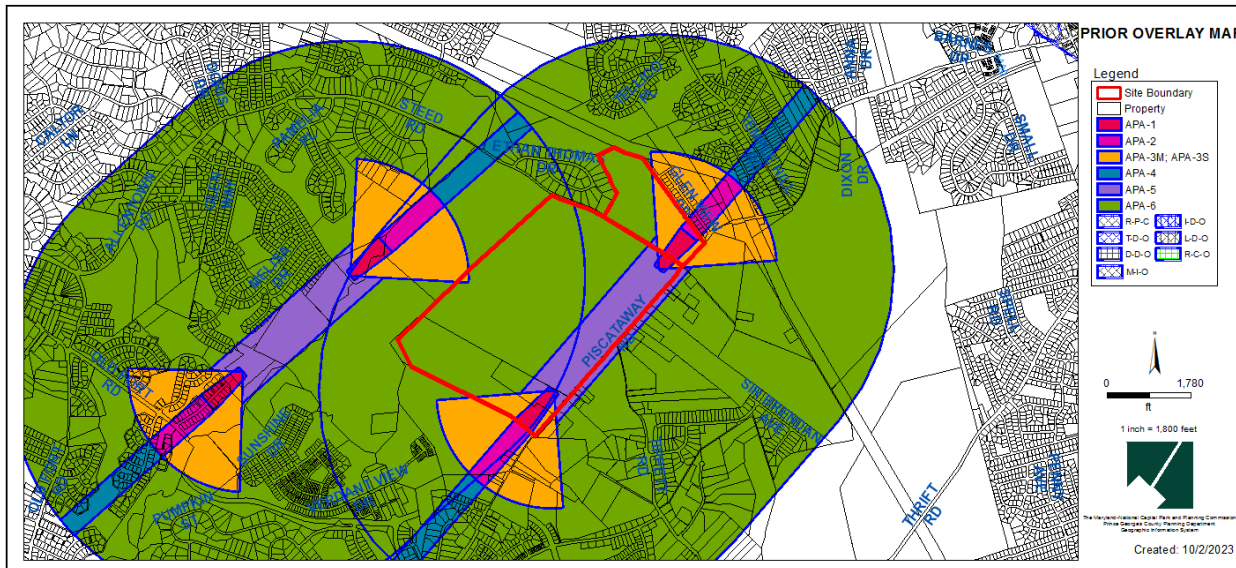
CURRENT ZONING MAP



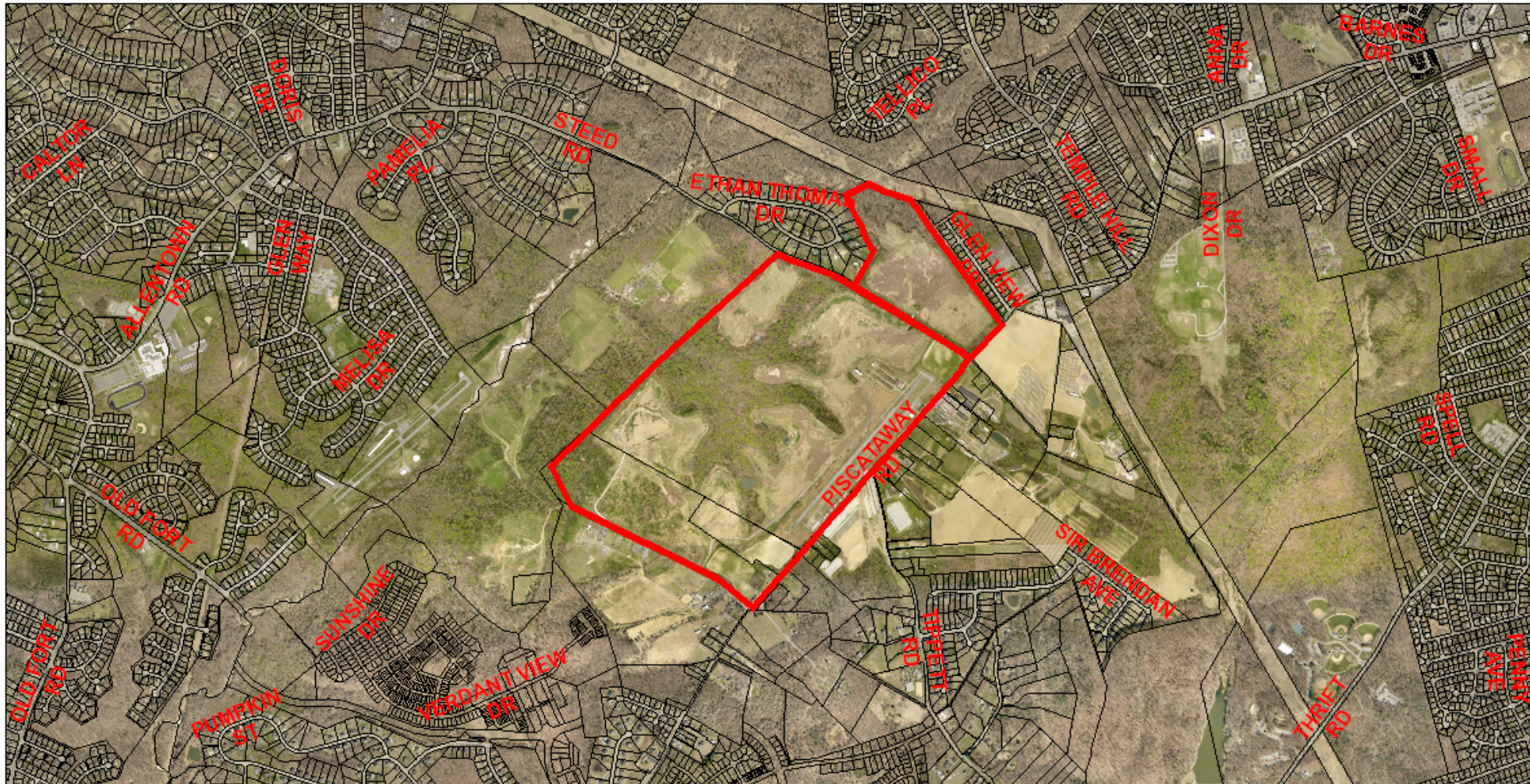
OVERLAY MAP (PRIOR AND CURRENT)

PRIOR OVERLAY MAP

CURRENT OVERLAY MAP



AERIAL MAP



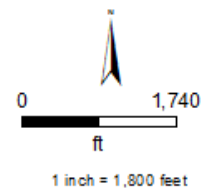
AERIAL MAP

Legend

Site Boundary

Property

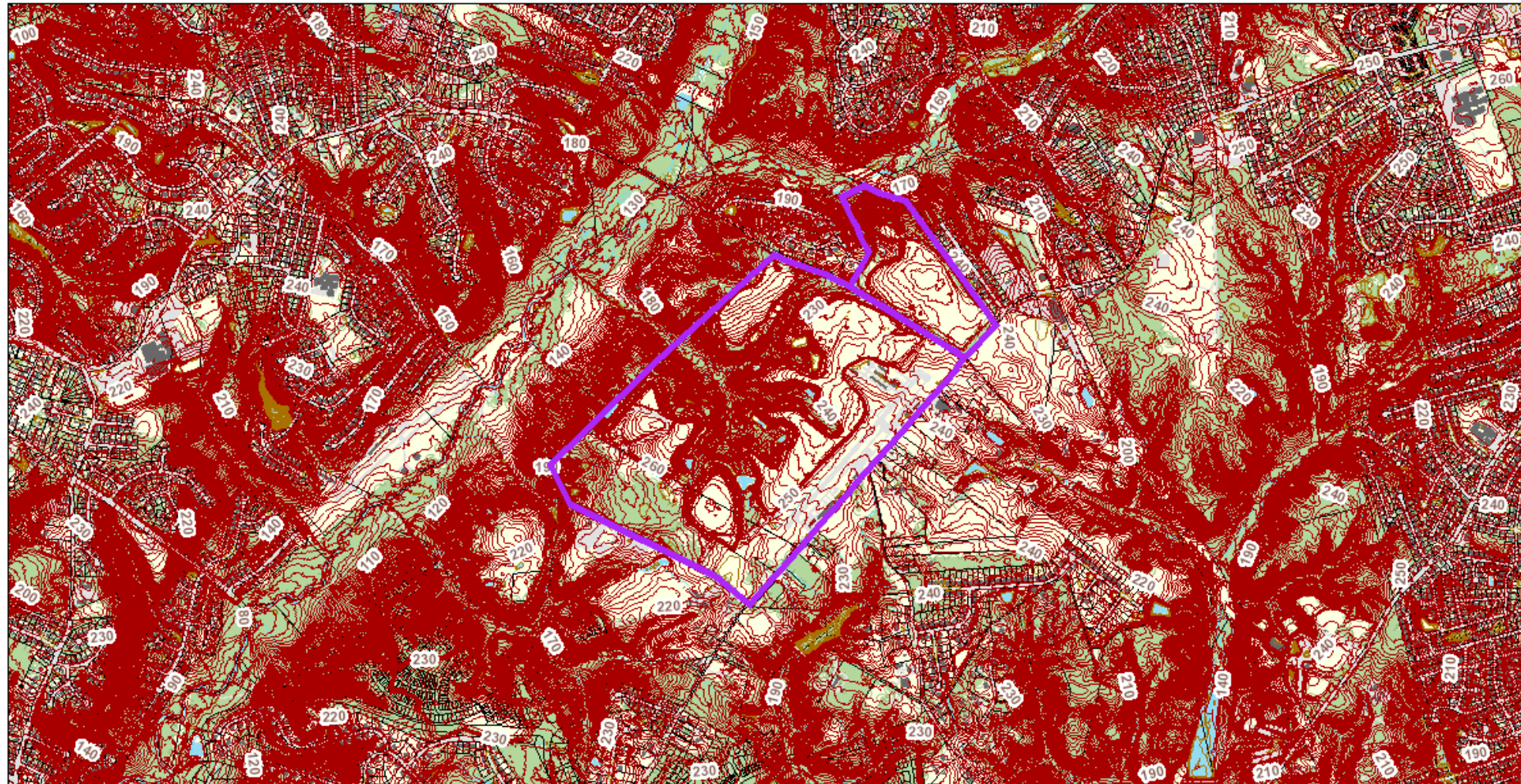
IMAGERY FROM
May 2023



The Maryland-National Capital Park and Planning Commission
Prince George's County Planning Department
Geographic Information System

Created: 10/2/2023

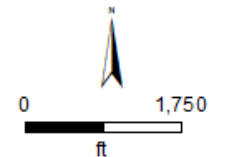
SITE MAP



SITE MAP

Legend

- Site Boundary
- Building
- Bridge
- Pavement
- Water
- Vegetation
- Property
- Contour Line
- Depression Line
- Railroad Line



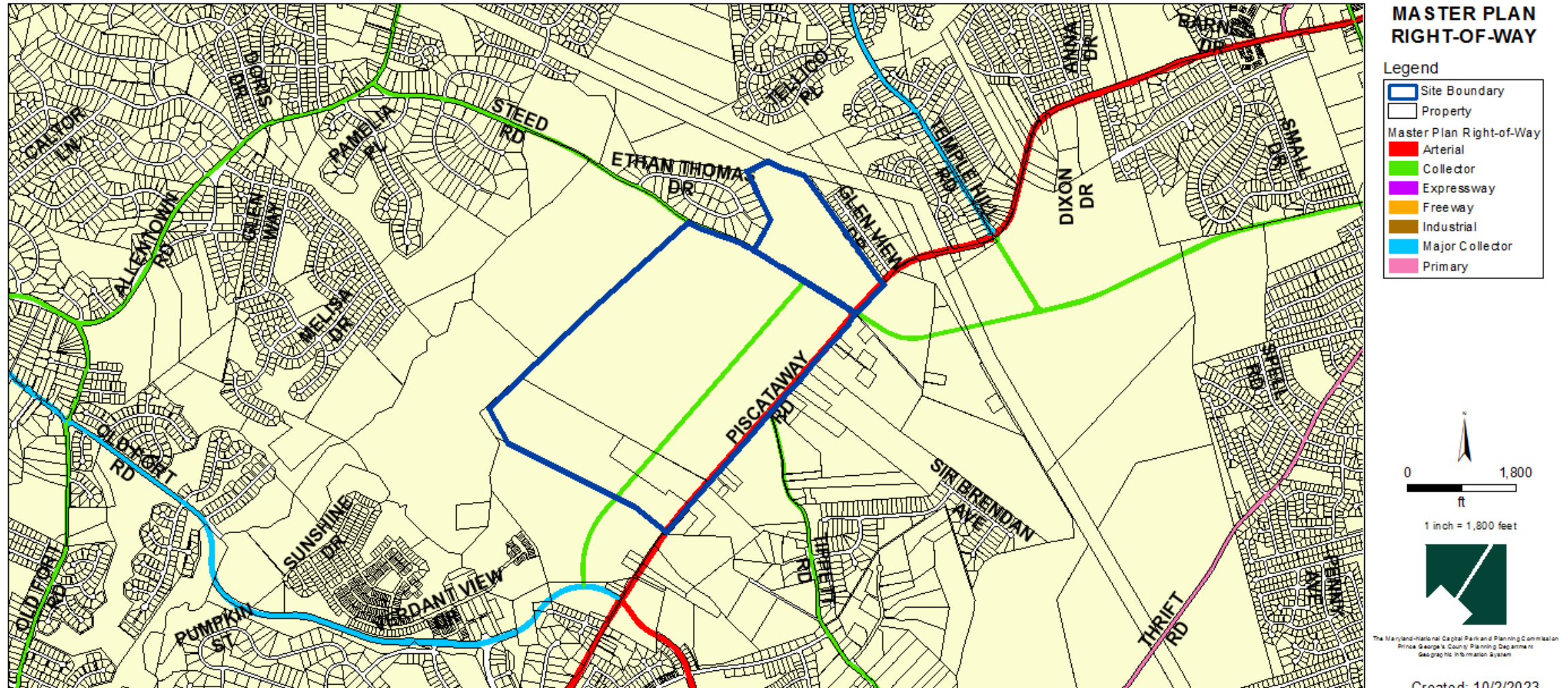
1 inch = 1,800 feet



The Maryland-National Capital Park and Planning Commission
Prince George's County Planning Department
Geographic Information System

Created: 10/2/2023

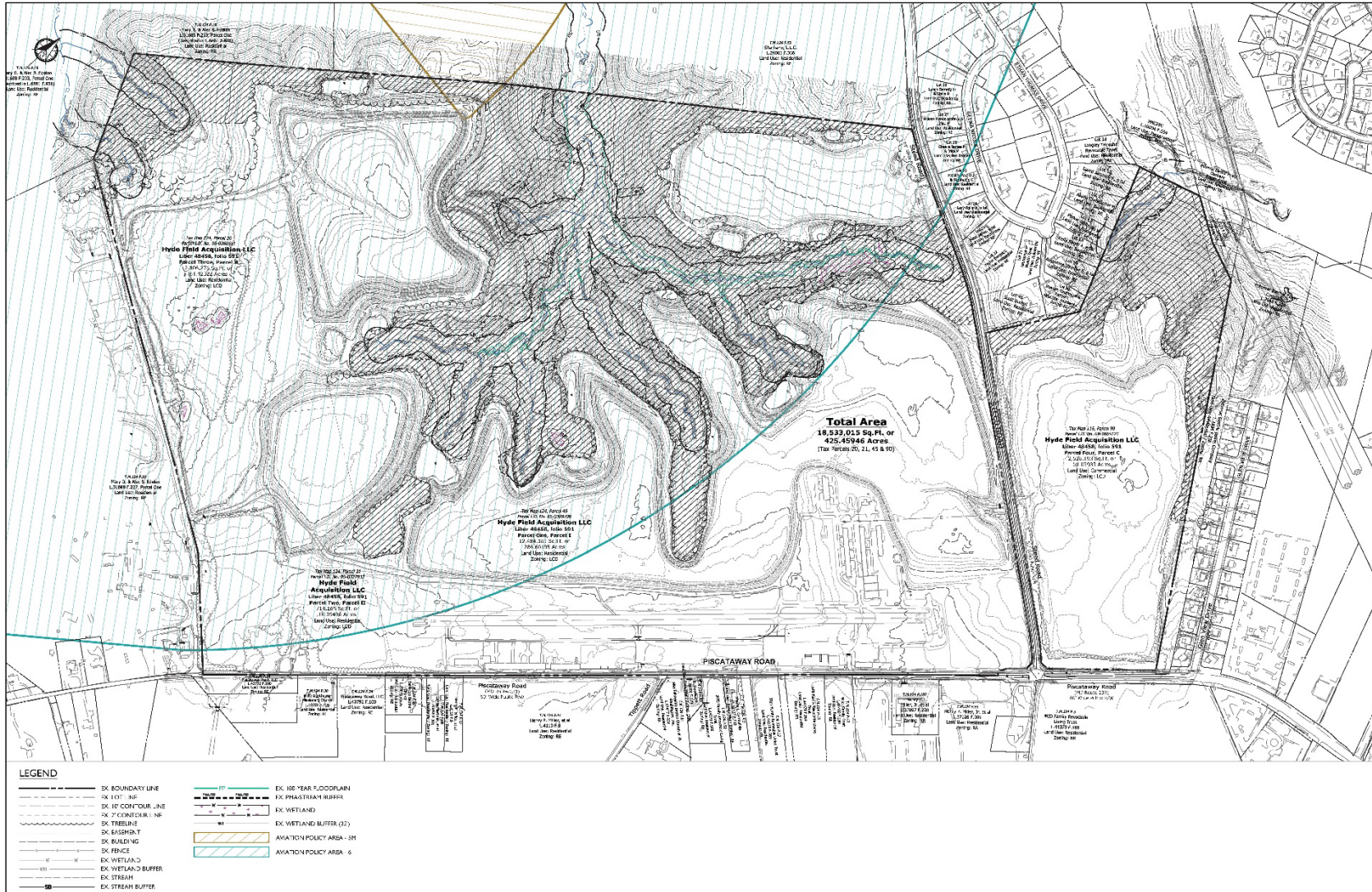
MASTER PLAN RIGHT-OF-WAY MAP



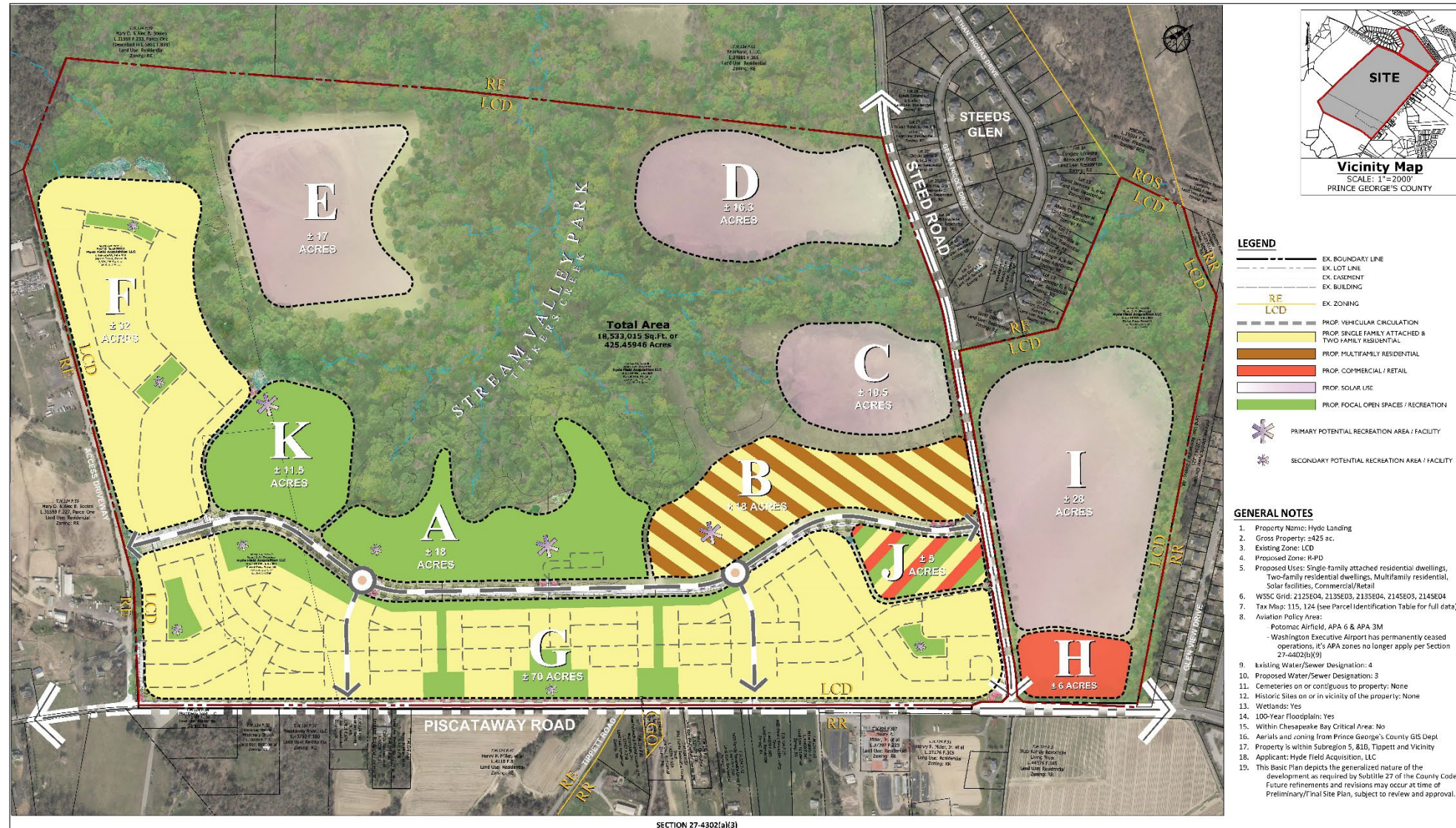
BIRD'S-EYE VIEW WITH APPROXIMATE SITE BOUNDARY OUTLINED



EXISTING CONDITIONS



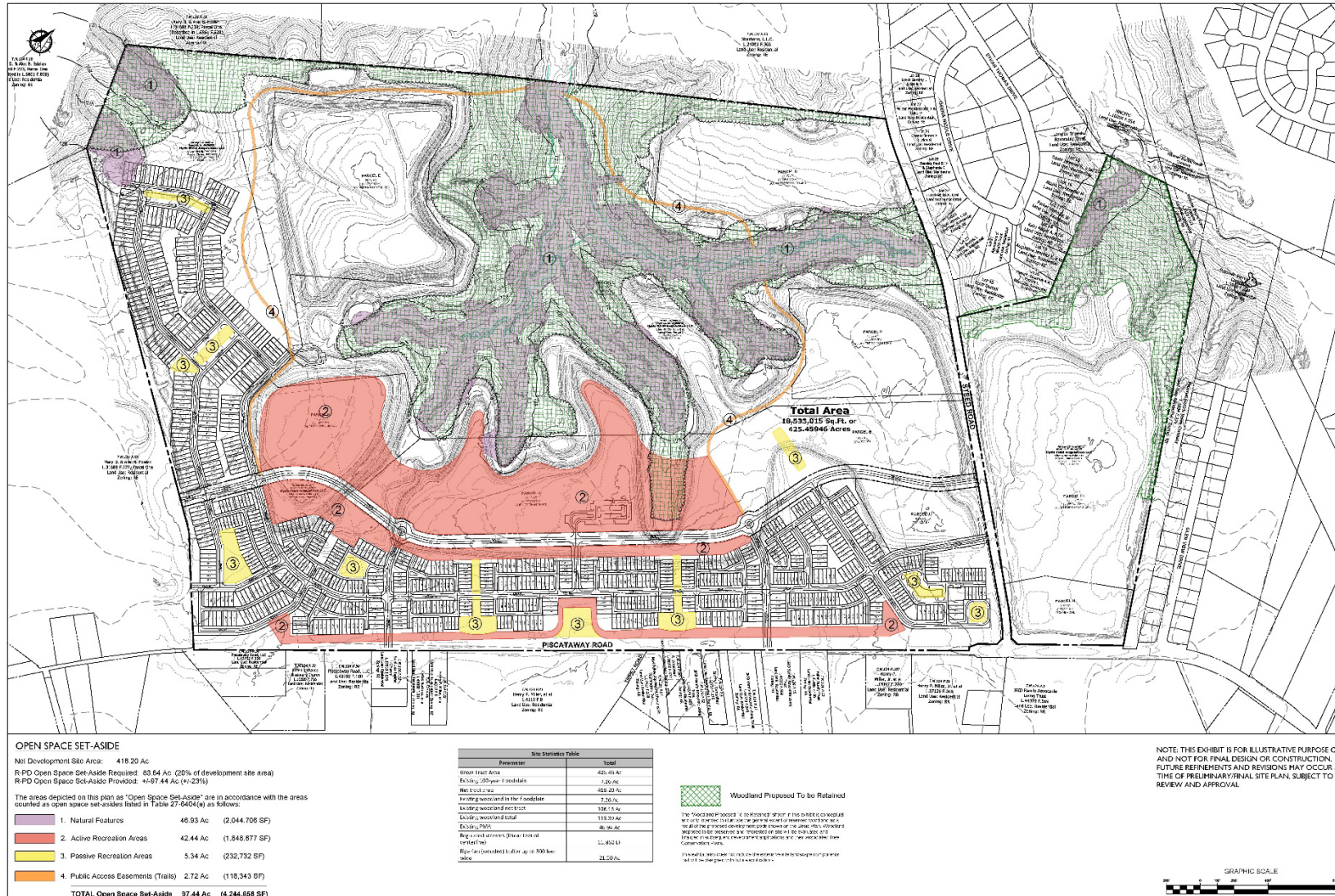
BASIC PLAN



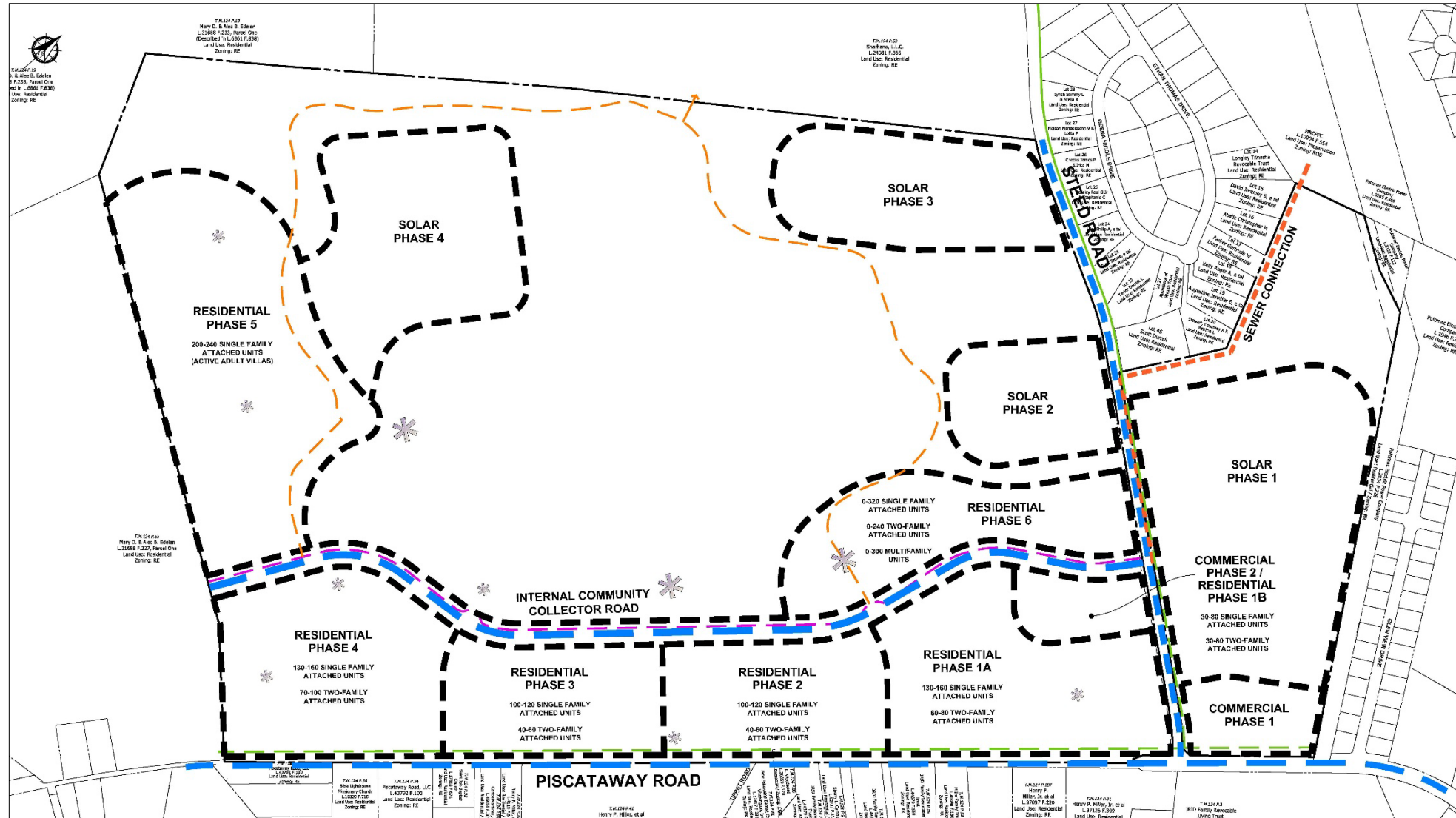
CIRCULATION EXHIBIT



OPEN SPACE SET-ASIDE EXHIBIT



PHASING PLAN



STAFF RECOMMENDATION

APPROVAL of continuance

- ZMA-2022-005

Major/Minor Issues:

- None

Applicant Required Mailings:

- Informational Mailing: 03/9/2023
- Acceptance Mailing: 06/22/2023