

A

SHEET NO. 1 OF 10

OWNER'S COUNTY OF DEPARTMENT OF PLANNING AND APPROVAL SERVICE PLAN		THIS BLOCK IS FOR OFFICIAL USE ONLY (a) Label identifies this plan meets conditions of final approval for the Planning Board. Its design or the District Council.	
0-1011-12	Date 11/28/12 11/27/13 8/20/15 11/27/16		
M-NCPPC APPROVAL		PROJECT NAME: SMITH HOME FARM PROJECT NUMBER: SDP-1003-05	

For Conditions of Approval see Site Plan Cover Sheet or Approval Sheet  
 Revision numbers must be included in the Project Number



## F

**E**

C

## B

- A

## INDIVIDUAL WOODLAND CONSERVATION WORKSHEET

## PLANTING SPECIFICATION NOTES

- PRIOR TO THE ISSUANCE OF THE FIRST GRADING PERMIT FOR THE SECTION OF DEVELOPMENT SHOWN ON THIS TCP2, ALL OFF-SITE WOODLAND CONSERVATION REQUIRED BY THIS PLAN SHALL BE IDENTIFIED ON AN APPROVED TCP2 PLAN AND RECORDED AS AN OFF-SITE EASEMENT IN THE LAND RECORDS OF PRINCE GEORGE'S COUNTY. PROOF OF RECORDED OF THE OFF-SITE CONSERVATION SHALL BE PROVIDED TO THE M-NCPPC, PLANNING DEPARTMENT PRIOR TO ISSUANCE OF ANY PERMIT FOR THE ASSOCIATED PLAN.

## TREE PRESERVATION AND RETENTION NOTES

- THE SUBJECT PROPERTY CONTAINS VIRGINIA PINES (*Pinus virginiana*) THAT ARE SUBJECT TO WIND THROW. ALL VIRGINIA PINES GREATER THAN 8 INCHES IN DIAMETER WITHIN 40 FEET OF THE FINAL PROPOSED LIMIT OF DISTURBANCE OR THE BOUNDARY OF THE PROPERTY SHALL BE CUT DOWN BY HAND DURING THE CLEARING OF THE SITE.
- AFTER THE VIRGINIA PINES HAVE BEEN REMOVED, THE CONTRACTOR RESPONSIBLE FOR IMPLEMENTATION OF THIS TP2 SHALL SUBMIT AN EVALUATION OF THE STOCKING LEVELS FOR THE RESIDUAL STAND, MANAGEMENT TECHNIQUES TO BE APPLIED TO THE RESIDUAL STAND, AND PLANTING REQUIREMENTS TO THE MAJOR PLANNING DEPARTMENT. THIS EVALUATION SHALL BE SUBMITTED PRIOR TO THE ISSUANCE OF THE FIRST BUILDING PERMIT TO ENSURE THAT ALL HIGH RISK TREES HAVE BEEN REMOVED. A PLANTING SCHEDULE AND/OR DETAILS FOR THE MANAGEMENT OF NATURAL REGENERATION TO FULLY RESTOCK THE SITE MUST BE SHOWN ON THE PLAN.



No.	DATE	BY	Description
REVISIONS			

DRAWN BY \_\_\_\_\_

APPROVED BY \_\_\_\_\_

CHECKED BY \_\_\_\_\_

DATE \_\_\_\_\_

TITLE \_\_\_\_\_

DETAILS, NOTES, & COMPUTATIONS

---

DEWBERRY JOB NO. 50038403

\_\_\_\_\_

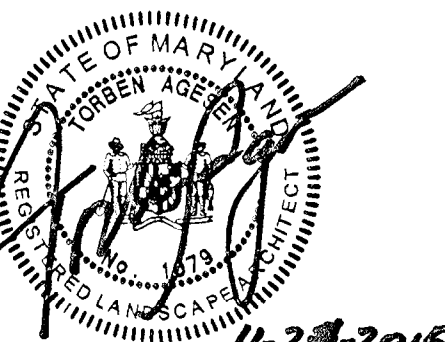
2

SHEET NO. 2 OF 10



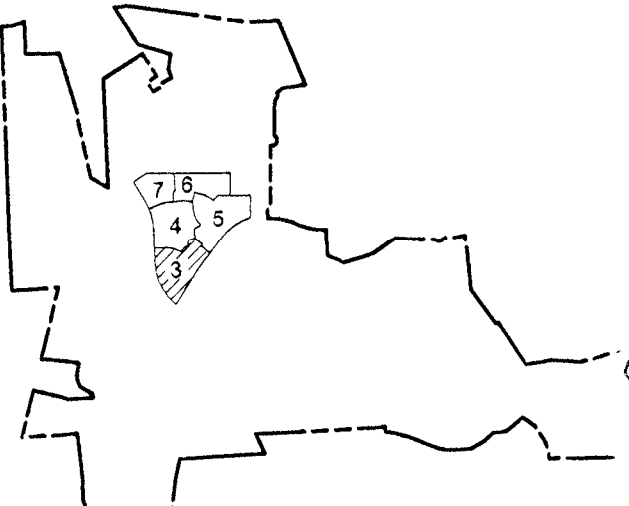
SMITH HOME FARM  
PRINCE GEORGE'S COUNTY  
MARYLAND  
6TH & 15TH ELECTION DISTRICTS  
TAX MAP: 90-91 - GRID: MULTIPLE  
ADJUSTED PARCEL 1, PARCELS II, IV, V, VI, VIII & IX  
2001 MAP REFERENCE: 205SE08-09, 206SE08-09, 207SE08

SEAL



**PROFESSIONAL CERTIFICATION:**  
I HEREBY CERTIFY THAT THESE  
DOCUMENTS WERE PREPARED OR  
APPROVED BY ME, AND THAT I AM A  
DULY LICENSED LANDSCAPE ARCHITECT  
UNDER THE LAWS OF THE STATE OF  
MARYLAND, LICENSE NO. 1079.  
EXPIRATION DATE: JULY 14, 2016.

### KEY PLAN



THIS TCPII PLAN SHEET CORRESPONDS  
TO SHEET 34 OF THE SDP AND  
LANDSCAPE PLANS

SCALE

0 30 60

SCALE: 1"=30'

[illegible]

No.	DATE	BY	Description
REVISIONS			

DRAWN BY	JCT
APPROVED BY	TA
CHECKED BY	RAL
DATE	JUNE 2015

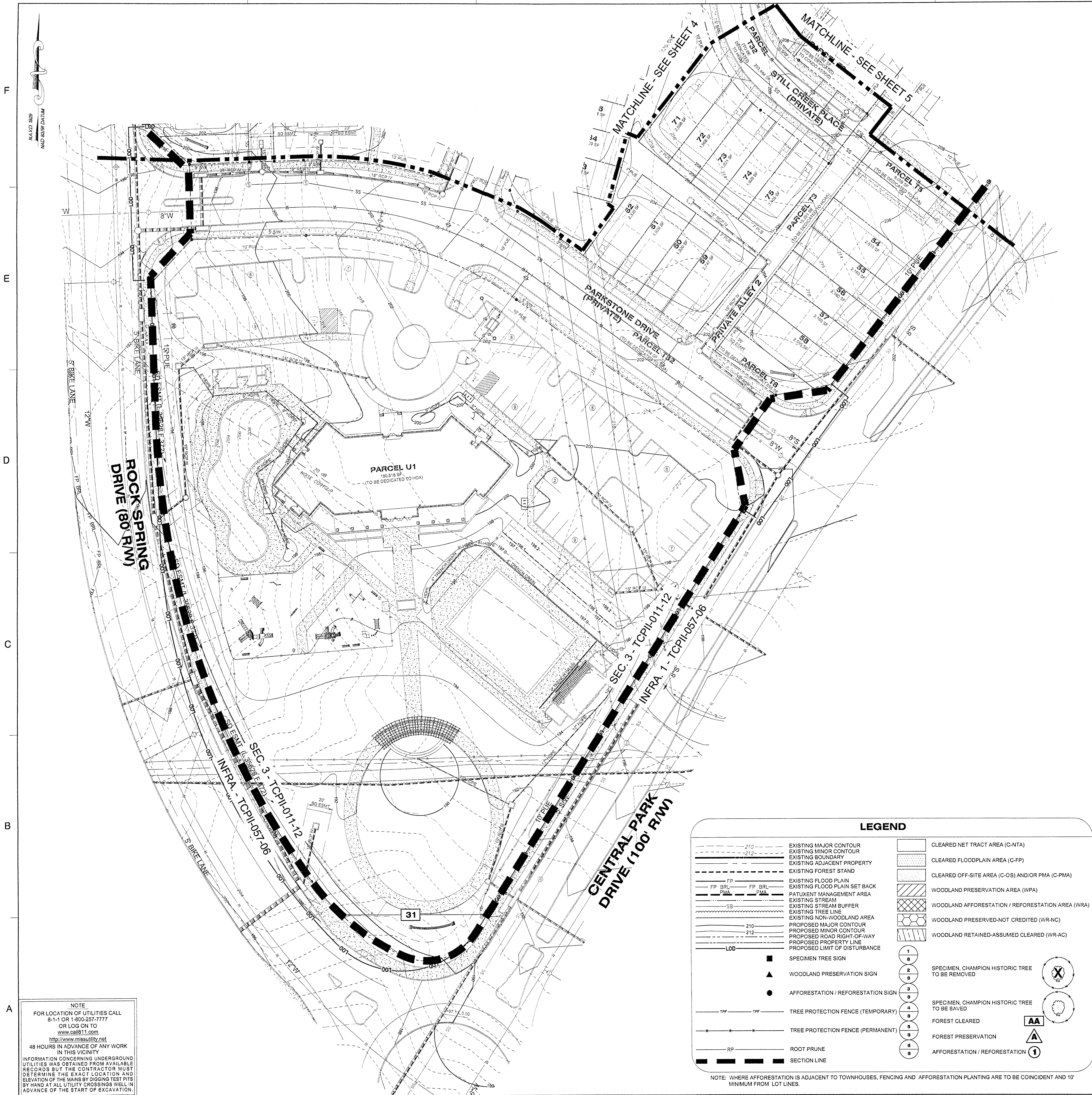
TITLE \_\_\_\_\_

TYPE II TREE  
CONSERVATION  
PLAN  
SECTION 3

DEWBERRY JOB NO. 50038403

3

SHEET NO. 3 OF 10



SHEET 3	LABEL	AREA (ACRES)
WOODLAND CLEARED (C-NTA)	31	0.53
WOODLAND CLEARED FLOODPLAIN (C-FP)	-	-
WOODLAND CLEARED OFFSITE (C-OS) &/OR PMA	-	-
WOODLAND PRESERVATION (WPA)	-	-
WOODLAND RETAINED-NOT CREDITED (WR-NC)	-	-
WOODLAND RETAINED-ASSUMED CLEARED (WR-AC)	-	-
WOODLAND RE/AFFORESTATION (WRA)	-	-

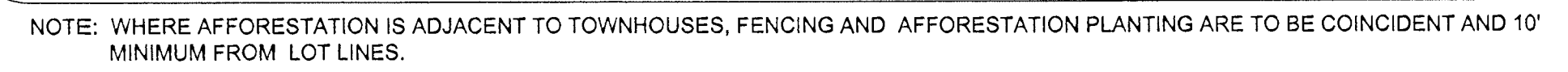
<p>M-NCPPC</p> <p>PRINCE GEORGE'S COUNTY</p> <p>PLANNING DEPARTMENT</p> <p>ENVIRONMENTAL PLANNING SECTION</p> <p>APPROVAL</p> <p>TREE CONSERVATION PLAN</p> <p><b><u>TCPII-011-12</u></b></p>		<p>THIS BLOCK IS FOR OFFICIAL USE ONLY</p> <p>QR label certifies that this plan meets conditions of final approval by the Planning Board, its designee or the District Council.</p> <p><b>M-NCPPC APPROVAL</b></p>
<p>Approved by</p> <p><b>K. FINCH</b></p>		<p>Date</p> <p><b>11/28/12</b></p>
01	K. FINCH	11/07/13
02	K. FINCH	8/20/15
03	<i>L. Smith</i>	<i>1/5/2016</i>
04		
05		


PROJECT NAME: SMITH HOME FARM

PROJECT NUMBER: SDP-1003-05

For Conditions of Approval see Site Plan Cover Sheet or Approval Sheet  
Revision numbers must be included in the Project Number



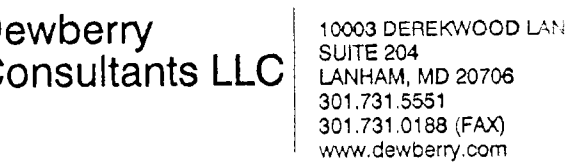


<p><b>THIS BLOCK IS FOR OFFICIAL USE ONLY</b></p> <p>QR label certifies that this plan meets conditions of final approval by the Planning Board, its designee or the District Council.</p> <p><b>M-NCPPC APPROVAL</b></p>	
<p><b>PROJECT NAME: SMITH HOME FARM</b></p> <p><b>PROJECT NUMBER: SDP-1003-05</b></p>	

*For Conditions of Approval see Site Plan Cover Sheet or Approval Sheet*  
*Revision numbers must be included in the Project Number*

**NOTE**  
FOR LOCATION OF UTILITIES CALL  
8-1-1 OR 1-800-257-7777  
OR LOG ON TO  
[www.call811.com](http://www.call811.com)  
<http://www.missutility.net>  
8 HOURS IN ADVANCE OF ANY WORK  
IN THIS VICINITY  
FORMATION CONCERNING UNDERGROUND  
CORDS WAS OBTAINED FROM AVAILABLE  
CORDS BUT THE CONTRACTOR MUST  
TERMINATE THE EXACT LOCATION AND  
LOCATION OF THE MAINS BY DIGGING TEST PITS  
HAND AT ALL UTILITY CROSSINGS WELL IN  
ADVANCE OF THE START OF EXCAVATION.





OWNER/APPLICANT  
SHF PROJECT OWNER, LLC  
999 AVENUE OF THE STARS, SUITE 285  
LOS ANGELES, CA 90067

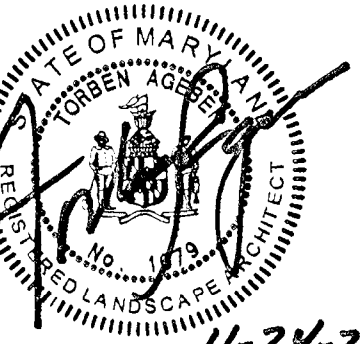
ATTORNEY/CONTACT:  
ROBERT ANTONETTI, JR.  
PH: 301-925-1800

ADDITIONAL CONTACT:  
BASIM KATTAN  
PH: 202-342-1933

SMITH HOME FARM  
PRINCE GEORGE'S COUNTY  
MARYLAND  
TH & 15TH ELECTION DISTRICTS

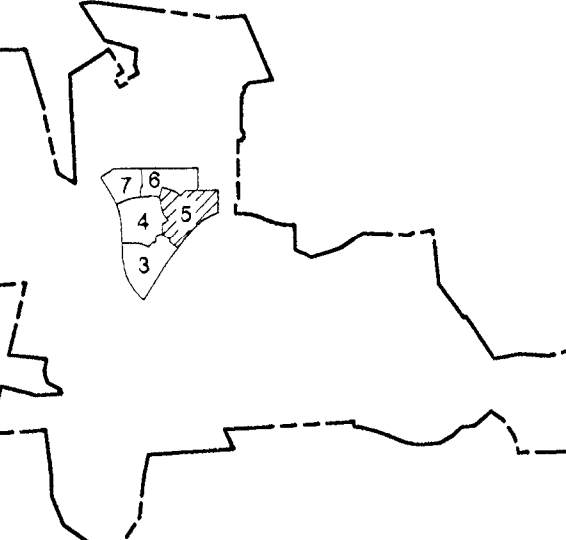
TAX MAP: 90, 91 - GRID: MULTIPLE  
ADJUSTED PARCEL L PARCELS III, IV, V, VI, VIII & IX  
2007 MAP REFERENCE: 205SE08-09, 206SE08-09, 207SE08

EAL



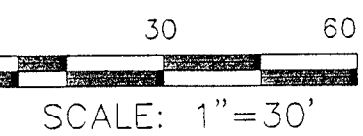
**PROFESSIONAL CERTIFICATION:**  
I HEREBY CERTIFY THAT THESE  
DRAWINGS WERE PREPARED OR  
DESIGNED BY ME, AND THAT I AM A  
LICENSED LANDSCAPE ARCHITECT  
UNDER THE LAWS OF THE STATE OF  
CALIFORNIA, LICENSE NO. 1079,  
EXPIRATION DATE: JULY 14, 2016.

## KEY PLAN



THIS TCPII PLAN SHEET CORRESPONDS  
SHEET 36 OF THE SDP AND  
LANDSCAPE PLANS

SCALE




DATE	BY	Description
REVISIONS		

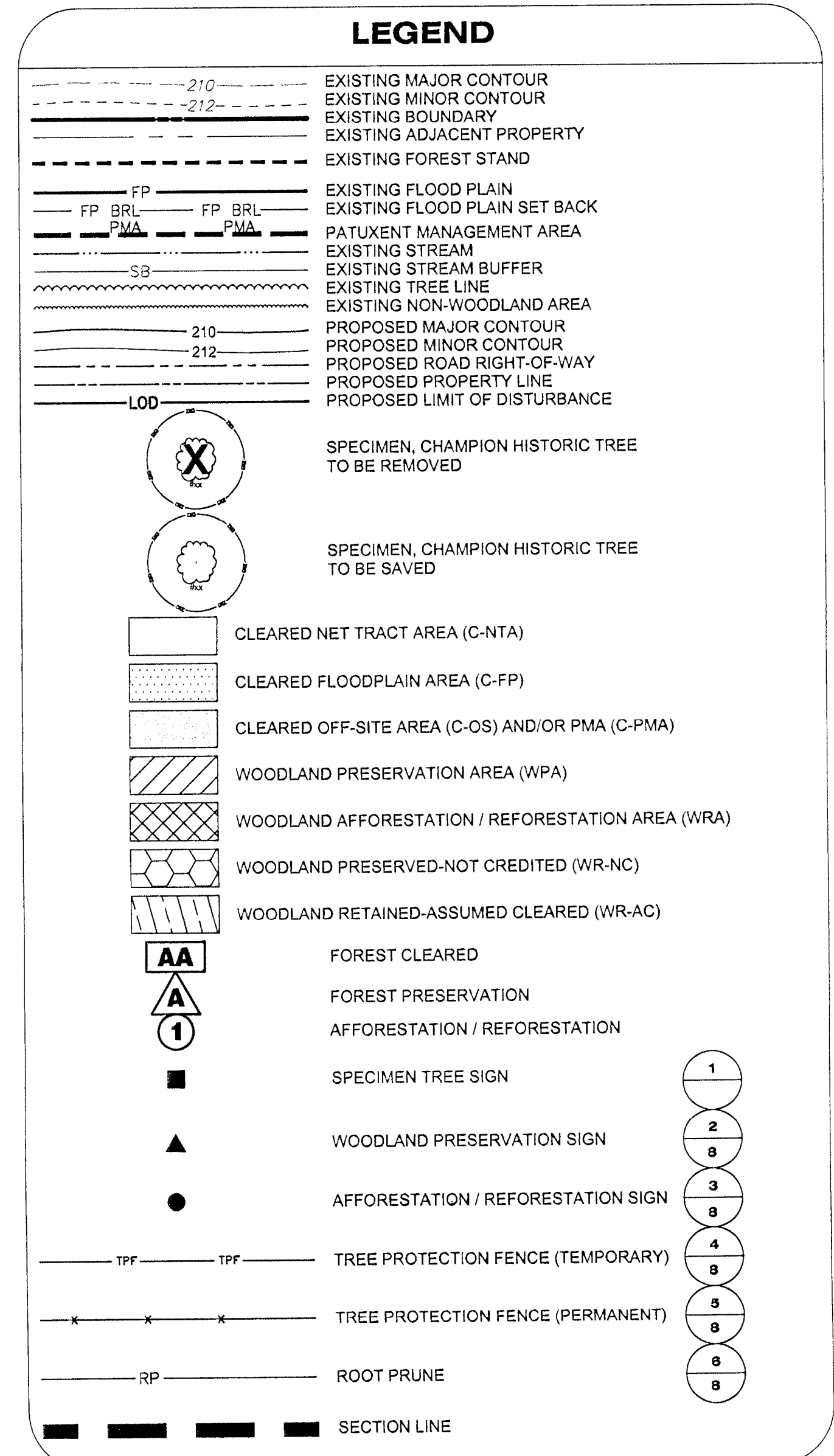
DRAWN BY	JCT
APPROVED BY	TA
CHECKED BY	RAL
DATE	JUNE 2015

TITLE  
TYPE II TREE  
CONSERVATION  
PLAN  
SECTION 3

DEWBERRY JOB NO. 50038403

5

SHEET NO. 5 OF 10



NOTE: WHERE AFFORESTATION IS ADJACENT TO TOWNHOUSES, FENCING AND AFFORESTATION PLANTING ARE TO BE COINCIDENT AND 10' MINIMUM FROM LOT LINES.

SHEET 5	LABEL	AREA (ACRES)
WOODLAND CLEARED (C-NTA)	-	-
WOODLAND CLEARED FLOODPLAIN (C-FP)	-	-
WOODLAND CLEARED OFFSITE (C-OS) &/OR PMA	-	-
WOODLAND PRESERVATION (WPA)	-	-
WOODLAND RETAINED-NOT CREDITED (WR-NC)	-	-
WOODLAND RETAINED-ASSUMED CLEARED (WR-AC)	-	-
WOODLAND RE/AFFORESTATION (WRA)	1	3.28

<p>M-NCPPC</p> <p>PRINCE GEORGE'S COUNTY</p> <p>PLANNING DEPARTMENT</p> <p>ENVIRONMENTAL PLANNING SECTION</p> <p>APPROVAL</p> <p>TREE CONSERVATION PLAN</p> <p><b>TCPII-011-12</b></p>		<p><b>THIS BLOCK IS FOR OFFICIAL USE ONLY</b></p> <p>QR label certifies that this plan meets conditions of final approval by the Planning Board, its designee or the District Council.</p> <p><b>M-NCPPC APPROVAL</b></p>	
<p>Approved by _____ Date _____</p>			
01	K. FINCH		11/28/12
02	K. FINCH		11/07/13
03	K. FINCH		8/20/15
04	<i>[Signature]</i>		<i>[Signature]</i>
<p><b>PROJECT NAME:</b> SMITH HOME FARM</p> <p><b>PROJECT NUMBER:</b> SDP-1093-05</p> <p style="font-size: small;">For Conditions of Approval use the Site Plan Cover Sheet or Approval Sheet Revision numbers must be included in the Project Number</p>			

**NOTE**  
FOR LOCATION OF UTILITIES CALL  
8-1-1 OR 1-800-257-7777  
OR LOG ON TO  
[www.call811.com](http://www.call811.com)  
<http://www.missutility.net>  
48 HOURS IN ADVANCE OF ANY WORK  
IN THIS VICINITY  
FORMATION CONCERNING UNDERGROUND  
UTILITIES WAS OBTAINED FROM AVAILABLE  
RECORDS BY THE CONTRACTOR MUST  
DETERMINE THE EXACT LOCATION AND  
DEPTH OF THE MAINS BY DIGGING TEST PITS  
AT ALL UTILITY CROSSINGS WELL IN  
ADVANCE OF THE START OF EXCAVATION.



No.	DATE	BY	Description

REVISIONS

DRAWN BY JCT

APPROVED BY TA

CHECKED BY RAL

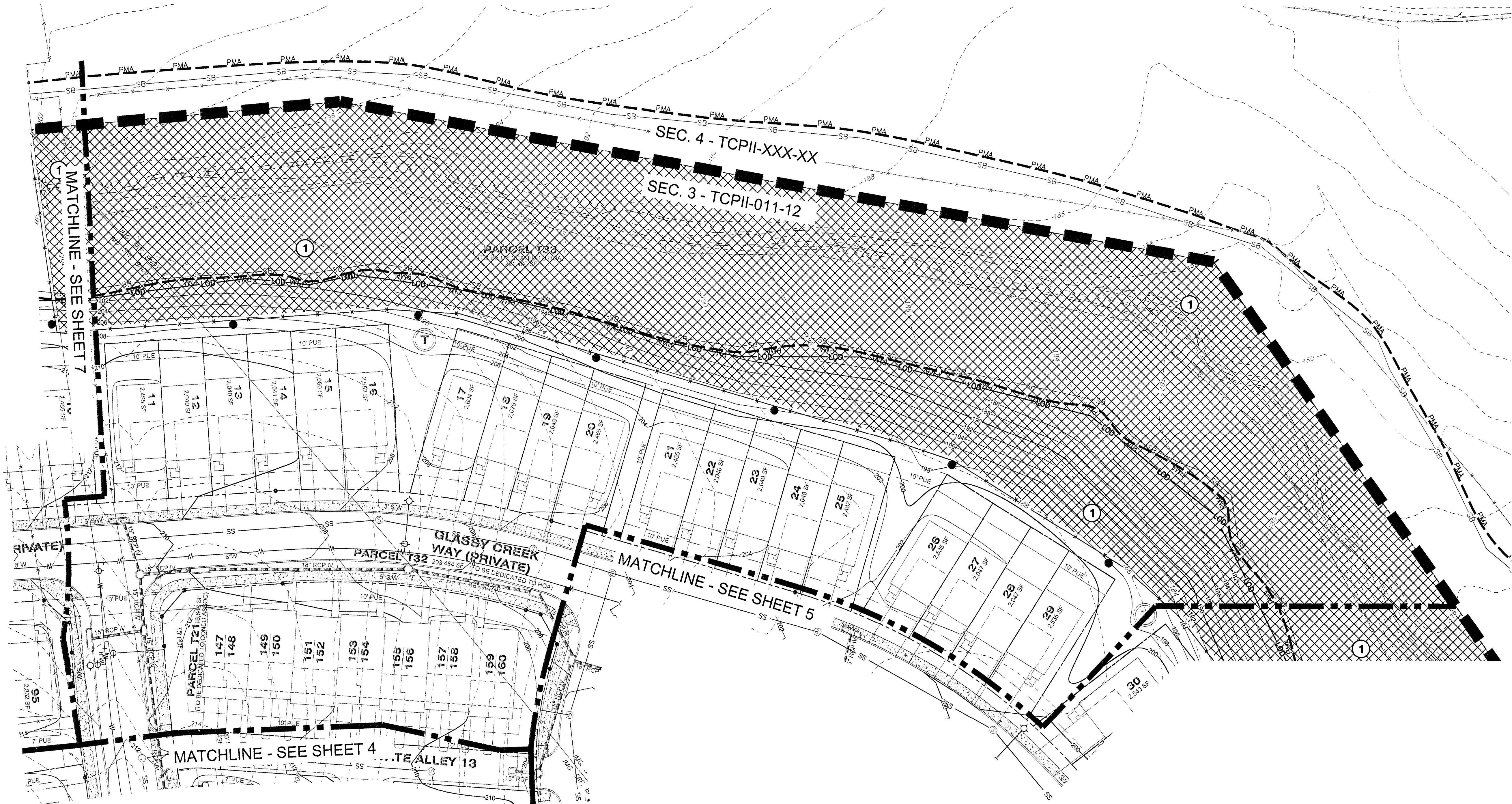
DATE JUNE 2015

TITLE  
TYPE II TREE  
CONSERVATION  
PLAN  
SECTION 3

DEWBERRY JOB NO. 50038403

6

SHEET NO. 6 OF 10



LEGEND			
	EXISTING MAJOR CONTOUR		CLEARED NET TRACT AREA (C-NTA)
	EXISTING MINOR CONTOUR		CLEARED FLOODPLAIN AREA (C-FP)
	EXISTING BOUNDARY		CLEARED OFF-SITE AREA (C-OS) AND/OR PMA (C-PMA)
	EXISTING ADJACENT PROPERTY		WOODLAND PRESERVATION AREA (WPA)
	EXISTING FOREST STAND		WOODLAND AFFORESTATION / REFORESTATION AREA (WRA)
	EXISTING FLOOD PLAIN		WOODLAND PRESERVED-NOT CREDITED (WR-NC)
	EXISTING FLOOD PLAIN SET BACK		WOODLAND RETAINED-ASSUMED CLEARED (WR-AC)
	PATUXENT MANAGEMENT AREA		
	EXISTING STREAM		
	EXISTING STREAM BUFFER		
	EXISTING TREE LINE		
	EXISTING NON-WOODLAND AREA		
	PROPOSED MAJOR CONTOUR		
	PROPOSED MINOR CONTOUR		
	PROPOSED ROAD RIGHT-OF-WAY		
	PROPOSED PROPERTY LINE		
	PROPOSED LIMIT OF DISTURBANCE		
	SPECIMEN TREE SIGN		SPECIMEN, CHAMPION HISTORIC TREE TO BE REMOVED
	WOODLAND PRESERVATION SIGN		SPECIMEN, CHAMPION HISTORIC TREE TO BE SAVED
	AFFORESTATION / REFORESTATION SIGN		FOREST CLEARED
	TREE PROTECTION FENCE (TEMPORARY)		FOREST PRESERVATION
	TREE PROTECTION FENCE (PERMANENT)		AFFORESTATION / REFORESTATION
	ROOT PRUNE		
	SECTION LINE		

NOTE: WHERE AFFORESTATION IS ADJACENT TO TOWNHOUSES, FENCING AND AFFORESTATION PLANTING ARE TO BE COINCIDENT AND 10' MINIMUM FROM LOT LINES.

SHEET 6	LABEL	AREA (ACRES)
WOODLAND CLEARED (C-NTA)	-	-
WOODLAND CLEARED FLOODPLAIN (C-FP)	-	-
WOODLAND CLEARED OFFSITE (C-OS) &/OR PMA	-	-
WOODLAND PRESERVATION (WPA)	-	-
WOODLAND CLEARED-NOT CREDITED (WR-NC)	-	-
WOODLAND RETAINED-ASSUMED CLEARED (WR-AC)	-	-
WOODLAND RE/AFFORESTATION (WRA)	1	3.28

M-NCPPC PRINCE GEORGE'S COUNTY PLANNING DEPARTMENT ENVIRONMENTAL PLANNING SECTION APPROVAL TREE CONSERVATION PLAN TCPII-011-12		
Approved by	Date	
K. FINCH	11/28/12	
K. FINCH	11/07/13	
K. FINCH	8/20/15	
K. FINCH	2/12/16	

THIS BLOCK IS FOR  
OFFICIAL USE ONLY  
Official certifies that this plan  
meets conditions of final approval  
by the Planning Board, its designee  
or the District Council.



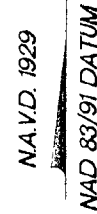
M-NCPPC  
APPROVAL

PROJECT NAME: SMITH HOME FARM

PROJECT NUMBER: SDP-1003-05

For Conditions of Approval see Site Plan Cover Sheet or Approval Sheet  
Revision numbers must be included in the Project Number





INFORMATION CONCERNING UNDERGROUND UTILITIES WAS OBTAINED FROM AVAILABLE RECORDS BUT THE CONTRACTOR MUST DETERMINE THE EXACT LOCATION AND ELEVATION OF THE MAINS BY DIGGING TEST PITS BY HAND AT ALL UTILITY CROSSINGS WELL IN ADVANCE OF THE START OF EXCAVATION.

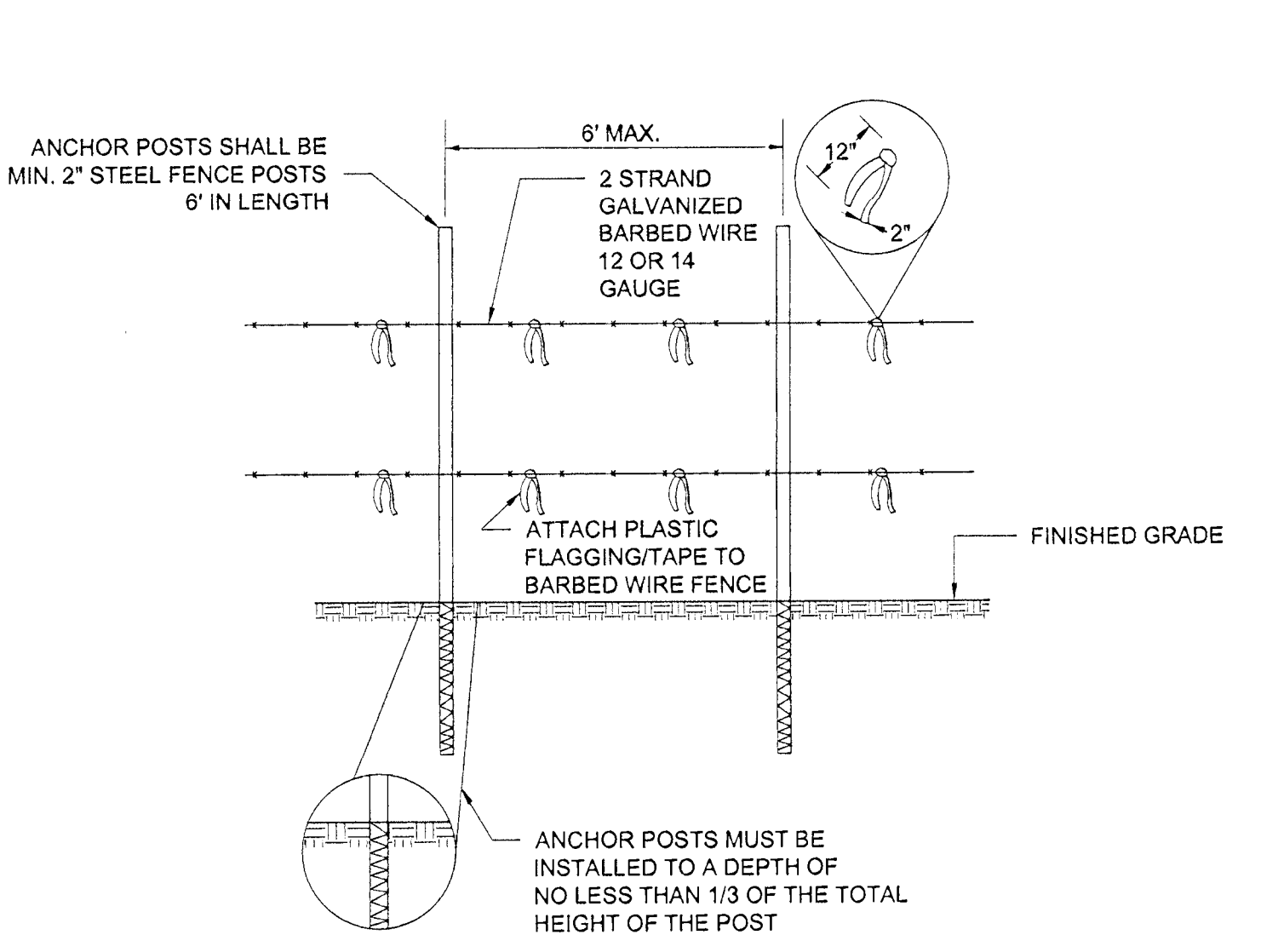
LABEL	AREA (ACRES)
-	-
-	-
-	-
-	-
-	-
-	-
1	3.28
2	0.81

	Approved by	Date
	K. FINCH	11/28/12
01	K. FINCH	11/07/13
02	K. FINCH	8/20/15
03	<i>L. Brown</i>	<i>1/5/16</i>
04		
05		

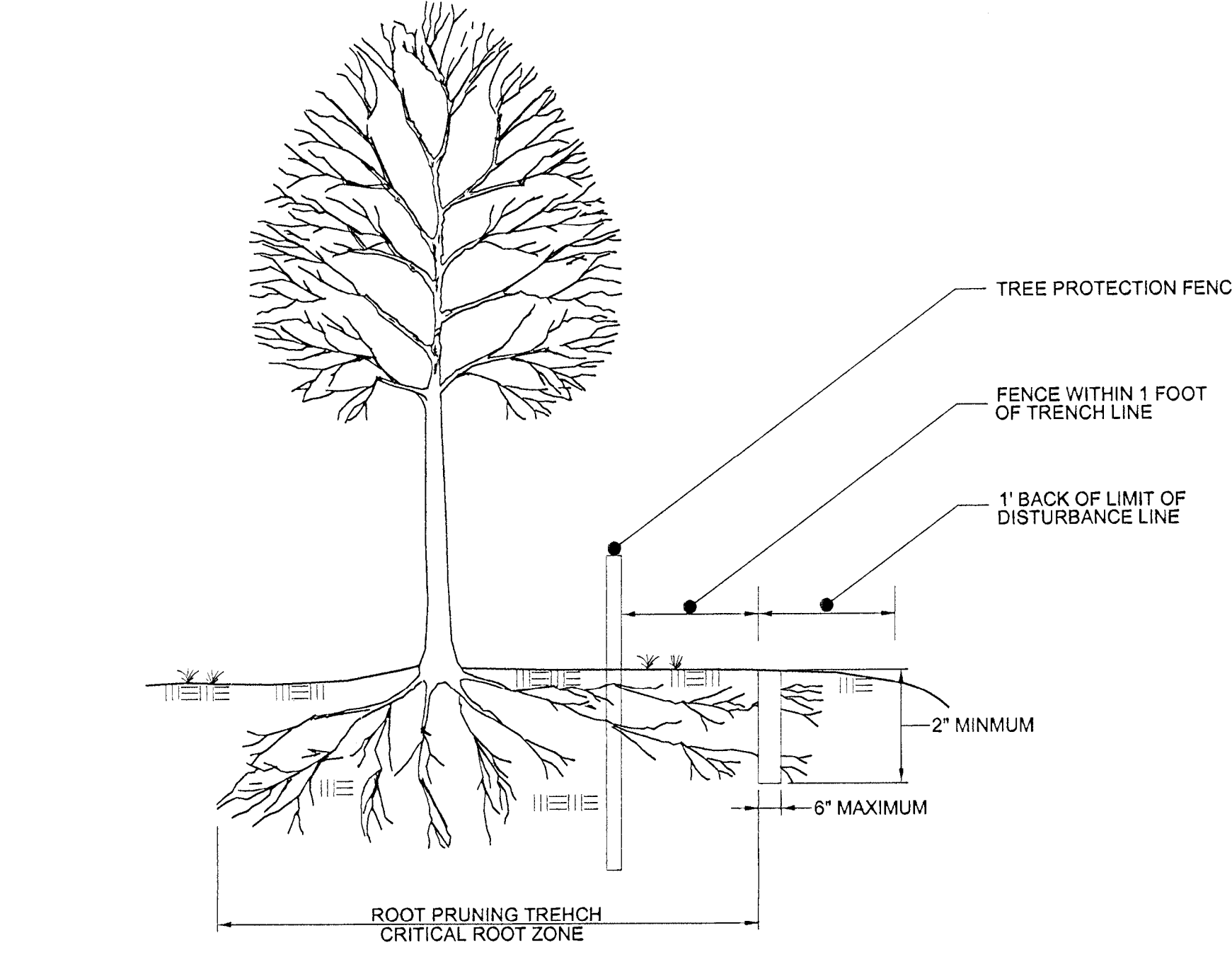
NOTE: WHERE AFFORESTATION IS ADJACENT TO TOWNHOUSES, FENCING AND AFFORESTATION PLANTING ARE TO BE COINCIDENT AND 10 MINIMUM FROM LOT LINES.

SHEET NO. 7 OF 10

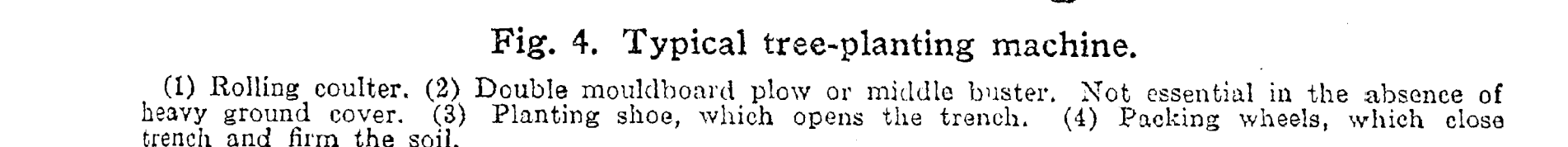




- NOTES:
1. FOREST PROTECTION DEVICE ONLY.
  2. RETENTION AREA WILL BE SET AS PART OF THE REVIEW PROCESS.
  3. BOUNDARIES OF RETENTION AREA SHOULD BE STAKED AND FLAGGED PRIOR TO INSTALLING DEVICES.
  4. AVOID ROOT DAMAGE WHEN PLACING ANCHOR POSTS.
  5. BARBED WIRE SHOULD BE SECURELY ATTACHED TO POST.
  6. DEVICE SHOULD BE PROPERLY MAINTAINED DURING CONSTRUCTION.
  7. PROTECTIVE SIGNAGE IS ALSO REQUIRED.
  8. MAY BE USED IN PLACE OF TYPE 1 (TEMPORARY) TREE PROTECTION FENCE. (SEE DETAIL 4A THIS SHEET)



- NOTES:
1. RETENTION AREAS TO BE ESTABLISHED AS PART OF THE FOREST CONSERVATION PLAN REVIEW PROCESS.
  2. BOUNDARIES OF RETENTION AREAS SHOULD BE STAKED, FLAGGED AND/OR FENCED PRIOR TO TRENCHING.
  3. EXACT LOCATION OF TRENCH SHOULD BE IDENTIFIED.
  4. TRENCH SHOULD BE IMMEDIATELY BACKFILLED WITH SOIL REMOVED OR OTHER HIGH ORGANIC SOIL.
  5. ROOTS SHOULD BE CLEANLY CUT USING VIBRATORY KNIFE OR OTHER ACCEPTABLE EQUIPMENT.



- NOTES:
1. SOURCE: UNKNOWN
  2. MULCHING NEWLY PLANTED SEEDLINGS HELPS THE SOIL RETAIN MOISTURE AND PROTECTS THE SEEDLING FROM COMPACTION AND STEM INJURIES.





F

E

D

C

B

A

SPECIMEN, CHAMPION, AND HISTORIC TREES SUMMARY

Note: Trees were tagged with a metal tag corresponding to the number below. Tags were placed approximately 5' from the ground with colored flagging attached. Tree locations are approximate.

Tag #	Common Name	Scientific Name	DBH (Inches)	Remarks/Condition	Proposed Disposition	Plan Section
1	Tulip Tree	<i>Liriodendron tulipifera</i>	34	Good	Save	offsite
2	Southern Red Oak	<i>Quercus falcata</i>	34	Poor, trunk damage	Save	offsite
3	Southern Red Oak	<i>Quercus falcata</i>	39	Fair, twin	Save	2
4	White Oak	<i>Quercus alba</i>	43	Fair	Save	offsite
5	White Oak	<i>Quercus alba</i>	40	Good	Save	2
6	Tulip Tree	<i>Liriodendron tulipifera</i>	30	Fair	Save	2
7	Tulip Tree	<i>Liriodendron tulipifera</i>	30	Fair	Save	2
8	White Oak	<i>Quercus alba</i>	50	Good	Save	offsite
9	Tulip Tree	<i>Liriodendron tulipifera</i>	32	Fair	Save	2
10	Tulip Tree	<i>Liriodendron tulipifera</i>	30	Fair	Save	2
11	Tulip Tree	<i>Liriodendron tulipifera</i>	31	Fair, twin	Save	offsite
12	Tulip Tree	<i>Liriodendron tulipifera</i>	30	Good	Save	offsite
13	Southern Red Oak	<i>Quercus falcata</i>	30	Good	Save	offsite
14	Red Maple	<i>Acer rubrum</i>	45	Fair, 3 stem	Save	2
15	Tulip Tree	<i>Liriodendron tulipifera</i>	34	Good	Remove	2
16	Tulip Tree	<i>Liriodendron tulipifera</i>	33	Good	Remove	2
17	Tulip Tree	<i>Liriodendron tulipifera</i>	30	Fair, twin with #18	Remove	2
18	Tulip Tree	<i>Liriodendron tulipifera</i>	32	Fair, twin with 30"	Remove	2
19	Pin Oak	<i>Quercus palustris</i>	36	Poor, insect damage	Remove	2
20	Red Maple	<i>Acer rubrum</i>	34	Good	Remove	2
21	Tulip Tree	<i>Liriodendron tulipifera</i>	53	Fair, twin	Save	offsite
22	Tulip Tree	<i>Liriodendron tulipifera</i>	34	Fair	Save	offsite
23	Tulip Tree	<i>Liriodendron tulipifera</i>	31	Good	Remove	2
24	Tulip Tree	<i>Liriodendron tulipifera</i>	33	Fair	Remove	2
25	White Oak	<i>Quercus alba</i>	39	Poor, half missing	Remove	2
26	White Oak	<i>Quercus alba</i>	32	Fair	Save	2
27	White Oak	<i>Quercus alba</i>	30	Good	Remove	2
28	Amercan Beech	<i>Fagus grandifolia</i>	39	Poor	Save	2
29	Tulip Tree	<i>Liriodendron tulipifera</i>	30	Fair	Remove	2
30	Tulip Tree	<i>Liriodendron tulipifera</i>	39	Fair	Remove	2
31	Tulip Tree	<i>Liriodendron tulipifera</i>	31	Good	Remove	2
32	Green Ash	<i>Fraxinus pennsylvanica</i>	49	Fair	Save	park
33	Red Maple	<i>Acer rubrum</i>	40	Fair, stream bank	Save	park
34	Tulip Tree	<i>Liriodendron tulipifera</i>	39	Good	Save	park
35	Amercan Beech	<i>Fagus grandifolia</i>	30	Good	Save	park
36	Tulip Tree	<i>Liriodendron tulipifera</i>	52	Fair	Save	park
37	Sweetgum	<i>Liquidambar styraciflua</i>	31	Good	Save	park
38	Red Maple	<i>Acer rubrum</i>	46	Fair	Save	park
39	Sycamore	<i>Platanus occidentalis</i>	37	Fair, stream bank	Save	park
40	Sycamore	<i>Platanus occidentalis</i>	50	Fair	Save	infra 2
41	Tulip Tree	<i>Liriodendron tulipifera</i>	37	Fair	Save	park
42	Tulip Tree	<i>Liriodendron tulipifera</i>	49	Good	Save	park
43	Tulip Tree	<i>Liriodendron tulipifera</i>	46	Good	Save	park
44	Pin Oak	<i>Quercus palustris</i>	45	Fair, insect damage	Save	4
45	Pin Oak	<i>Quercus palustris</i>	38	Good	Save	4
46	Tulip Tree	<i>Liriodendron tulipifera</i>	46	Good	Save	4
47	Pin Oak	<i>Quercus palustris</i>	47	Good	Save	4
48	Pin Oak	<i>Quercus palustris</i>	42	Good	Save	retained
49	Tulip Tree	<i>Liriodendron tulipifera</i>	43	Good	Save	retained
50	Red Maple	<i>Acer rubrum</i>	50	Poor, 1/2 missing	Save	retained
51	Sweetgum	<i>Liquidambar styraciflua</i>	34	Good	Save	retained
52	River Birch	<i>Betula nigra</i>	33	Fair	Save	retained
53	Tulip Tree	<i>Liriodendron tulipifera</i>	37	Fair	Save	offsite
54	Tulip Tree	<i>Liriodendron tulipifera</i>	46	Fair	Save	retained
55	Tulip Tree	<i>Liriodendron tulipifera</i>	35	Very poor, damaged	Save	retained
56	Sycamore	<i>Platanus occidentalis</i>	33	Fair, twin	Save	park
57	Tulip Tree	<i>Liriodendron tulipifera</i>	30	Poor	Save	park
58	Pin Oak	<i>Quercus palustris</i>	31	Good	Save	park
59	Red Oak	<i>Quercus rubra</i>	39	Fair	Save	park
60	Silver Maple	<i>Acer saccharinum</i>	31	Fair	Save	park
61	Silver Maple	<i>Acer saccharinum</i>	31	Poor	Save	park
62	Silver Maple	<i>Acer saccharinum</i>	35	Fair	Save	park
63	Tulip Tree	<i>Liriodendron tulipifera</i>	36	Good	Save	park
64	Tulip Tree	<i>Liriodendron tulipifera</i>	37	Fair, twin with 65	Save	park
65	Tulip Tree	<i>Liriodendron tulipifera</i>	38	Fair	Save	park
66	Silver Maple	<i>Acer saccharinum</i>	65	Fair, 4 stems	Save	park
67	Black Cherry	<i>Prunus serotina</i>	40	Poor, damaged	Remove	3
68	Tulip Tree	<i>Liriodendron tulipifera</i>	58	Fair	Save	3
69	Sycamore	<i>Platanus occidentalis</i>	30	Fair	Save	park
70	Silver Maple	<i>Acer saccharinum</i>	40	Fair, 6 stems	Save	park
71	Silver Maple	<i>Acer saccharinum</i>	44	Fair, 4 stems	Save	park
72	Silver Maple	<i>Acer saccharinum</i>	39	Good, stream bank	Save	park
73	Tulip Tree	<i>Liriodendron tulipifera</i>	36	Fair, 3 stems	Save	park
74	Tulip Tree	<i>Liriodendron tulipifera</i>	30	Fair, 3 stems	Save	park
75	Tulip Tree	<i>Liriodendron tulipifera</i>	33	Poor	Save	park
76	Tulip Tree	<i>Liriodendron tulipifera</i>	32	Good	Remove	park
77	Tulip Tree	<i>Liriodendron tulipifera</i>	60	Fair, 3 stems	Save	park
78	Tulip Tree	<i>Liriodendron tulipifera</i>	30	Poor	Save	park
79	Tulip Tree	<i>Liriodendron tulipifera</i>	30	Fair	Save	park
80	Tulip Tree	<i>Liriodendron tulipifera</i>	31	Fair, twin with 81	Save	park
81	Tulip Tree	<i>Liriodendron tulipifera</i>	30	Fair, twin	Save	park
82	Silver Maple*	<i>Acer saccharinum</i>	67	Fair	Save	park
83	Silver Maple	<i>Acer saccharinum</i>	59	Fair	Save	park
84	Silver Maple*	<i>Acer saccharinum</i>	75	Fair	Save	park
85	Silver Maple	<i>Acer saccharinum</i>	50	Good	Save	park
86	Black Walnut	<i>Juglans nigra</i>	34	Fair	Save	park
87	Silver Maple	<i>Acer saccharinum</i>	40	Fair	Save	park
88	Pin Oak	<i>Quercus palustris</i>	38	Good	Save	park
89	Pin Oak	<i>Quercus palustris</i>	30	Good	Save	park
90	Silver Maple	<i>Acer saccharinum</i>	47	Good	Save	park

91	Black Walnut	<i>Juglans nigra</i>	30	Poor	Save	park
92	Black Walnut	<i>Juglans nigra</i>	30	Fair	Save	6
93	Pin Oak	<i>Quercus palustris</i>	32	Good	Save	park
94	Silver Maple	<i>Acer saccharinum</i>	44	Poor, trunk damage	Save	park
95	Pin Oak	<i>Quercus palustris</i>	34	Good	Save	park
96	Cedar	<i>Juniperus</i> sp.	30	Good	Save	4
97	Tulip Tree	<i>Liriodendron tulipifera</i>	34	Fair	Save	4
98	Red Maple	<i>Acer rubrum</i>	34	Fair	Save	4
99	Tulip Tree	<i>Liriodendron tulipifera</i>	45	Good	Save	4
100	Black Locust	<i>Robinia pseudoacacia</i>	36	Poor	Save	4
101	Sweetgum	<i>Liquidambar styraciflua</i>	35	Fair	Save	6
102	Sweetgum	<i>Liquidambar styraciflua</i>	34	Fair	Save	6
103	American Beech	<i>Fagus grandifolia</i>	40	Good	Save	6
104	Red Maple	<i>Acer rubrum</i>	35	Good	Save	6
105	Red Maple	<i>Acer rubrum</i>	30	Fair	Save	6
106	Red Maple	<i>Acer rubrum</i>	52	Poor	Save	6
107	Sweetgum	<i>Liquidambar styraciflua</i>	31	Fair	Save	6
108	Red Maple	<i>Acer rubrum</i>	35	Good	Save	6
109	Tulip Tree	<i>Liriodendron tulipifera</i>	52	Poor	Save	6
109 A	Sweetgum	<i>Liquidambar styraciflua</i>	51	Fair	Save	6
110	Sweetgum	<i>Liquidambar styraciflua</i>	33	Fair	Save	6
111	Sweetgum	<i>Liquidambar styraciflua</i>	37	Good	Save	6
112	Elm	<i>Ulmus</i> sp.	36	Fair	Save	
113	Tulip Tree	<i>Liriodendron tulipifera</i>	35	Fair, twin	Save	4
114	Tulip Tree	<i>Liriodendron tulipifera</i>	37	Good	Save	4
115	Tulip Tree	<i>Liriodendron tulipifera</i>	34	Good	Save	offsite
116	Tulip Tree	<i>Liriodendron tulipifera</i>	41	Good	Save	offsite
117	Tulip Tree	<i>Liriodendron tulipifera</i>	41	Good	Save	offsite
118	Tulip Tree	<i>Liriodendron tulipifera</i>	30	Good	Save	4
119	Tulip Tree	<i>Liriodendron tulipifera</i>	36	Good	Save	4
120	Tulip Tree	<i>Liriodendron tulipifera</i>	38	Fair	Save	4
121	Tulip Tree	<i>Liriodendron tulipifera</i>	32	Fair, twin with 29"	Save	4
122	Tulip Tree	<i>Liriodendron tulipifera</i>	33	Good	Save	4
123	Tulip Tree	<i>Liriodendron tulipifera</i>	32	Fair	Save	offsite
124	Tulip Tree	<i>Liriodendron tulipifera</i>	34	Fair	Save	4
125	Tulip Tree	<i>Liriodendron tulipifera</i>	37	Good	Save	4
126	Elm	<i>Ulmus</i> sp.	36	Fair, twin	Save	4
127	Tulip Tree	<i>Liriodendron tulipifera</i>	41	Fair	Save	4
128	Tulip Tree	<i>Liriodendron tulipifera</i>	31	Fair	Save	4 church
129	Tulip Tree	<i>Liriodendron tulipifera</i>	41	Fair	Save	4 church
130	Tulip Tree	<i>Liriodendron tulipifera</i>	45	Fair, trash in area	Save	4 church
131	Tulip Tree	<i>Liriodendron tulipifera</i>	51	Fair, twin	Save	4 church
132	Tulip Tree	<i>Liriodendron tulipifera</i>	30	Fair	Save	4
133	American Beech	<i>Fagus grandifolia</i>	32	Fair	Save	4
134	American Beech	<i>Fagus grandifolia</i>	32	Fair, trash in area	Save	4
135	Tulip Tree	<i>Liriodendron tulipifera</i>	32	Good	Save	4
136	Tulip Tree	<i>Liriodendron tulipifera</i>	30	Fair, stream bank	Save	4
137	White Oak	<i>Quercus alba</i>	30	Good	Save	4
138	White Oak	<i>Quercus alba</i>	33	Good	Save	4
139	White Oak	<i>Quercus alba</i>	33	Good	Save	4
140	White Oak	<i>Quercus alba</i>	36	Good, stream bank	Save	4
141	Tulip Tree	<i>Liriodendron tulipifera</i>	39	Fair	Save	4
142	White Oak	<i>Quercus alba</i>	34	Good	Save	4
143	Tulip Tree	<i>Liriodendron tulipifera</i>	30	Fair, head of swale	Save	4
144	Tulip Tree	<i>Liriodendron tulipifera</i>	33	Fair	Save	4
145	Tulip Tree	<i>Liriodendron tulipifera</i>	34	Good, stream bank	Save	4
146	Tulip Tree	<i>Liriodendron tulipifera</i>	35	Fair	Save	4
147	Red Oak	<i>Quercus rubra</i>	34	Fair	Save	4
148	Tulip Tree	<i>Liriodendron tulipifera</i>	37	Good	Save	4
149	Tulip Tree	<i>Liriodendron tulipifera</i>	42	Fair	Save	4
150	Tulip Tree	<i>Liriodendron tulipifera</i>	30	Fair	Save	4
151	Tulip Tree	<i>Liriodendron tulipifera</i>	42	Good	Save	4
152	Red Maple	<i>Acer rubrum</i>	33	Poor	Save	5
153	American Beech	<i>Fagus grandifolia</i>	34	Good	Save	5
154	Tulip Tree	<i>Liriodendron tulipifera</i>	36	Good	Save	5
155	American Beech	<i>Fagus grandifolia</i>	30	Good	Save	5
156	Tulip Tree	<i>Liriodendron tulipifera</i>	40	Fair	Save	5
157	White Oak	<i>Quercus alba</i>	34	Fair	Save	5
158	Black Gum	<i>Nyssa sylvatica</i>	30	Fair	Save	5
159	Silver Maple	<i>Acer saccharinum</i>	36	Poor	Save	5
160	Silver Maple	<i>Acer saccharinum</i>	52	Fair	Save	5
161	Red Maple	<i>Acer rubrum</i>	39	Fair	Save	5
162	Red Maple	<i>Acer rubrum</i>	36	Fair	Save	5
163	Norway Maple	<i>Acer platanoides</i>	51	Fair	Save	5
164	Norway Maple	<i>Acer platanoides</i>	34	Fair	Save	5
165	Red Maple	<i>Acer rubrum</i>	35	Poor	Save	5
166	Red Maple	<i>Acer rubrum</i>	31	Fair	Save	6
167	Red Maple	<i>Acer rubrum</i>	30	Poor	Save	6
168	Hickory	<i>Carya</i> sp.	31	Poor	Save	6
169	Black Locust	<i>Robinia pseudoacacia</i>	36	Poor	Save	6
170	Black Locust	<i>Robinia pseudoacacia</i>	30	Fair	Save	park
171	Black Locust	<i>Robinia pseudoacacia</i>	35	Poor	Save	park
172	Silver Maple	<i>Acer saccharinum</i>	46	Fair	Save	park
173	Silver Maple	<i>Acer saccharinum</i>	35	Fair	Save	park
174	Silver Maple	<i>Acer saccharinum</i>	49	Fair	Save	park
175	Tulip Tree	<i>Liriodendron tulipifera</i>	37	Good	Save	park
176	Tulip Tree	<i>Liriodendron tulipifera</i>	34	Fair	Save	park
177	Tulip Tree	<i>Liriodendron tulipifera</i>	35	Fair	Save	park
178	Black Walnut	<i>Juglans nigra</i>	31	Fair	Save	6
179	Black Locust	<i>Robinia pseudoacacia</i>	36	Poor	Save	6

180	Osage Orange*	<i>Maclura pomifera</i>	57	Fair, covered in English Ivy	Save	6
181	Hickory	<i>Carya</i> sp.	33	Fair	Save	6
182	Black Gum*	<i>Nyssa sylvatica</i>	44	Fair	Save	6
183	Black Gum*	<i>Nyssa sylvatica</i>	54	Fair	Save	6
184	Beech	<i>Fagus</i> sp.	43	Fair	Save	6
185	Red Maple	<i>Acer rubrum</i>	30	Good	Save	6
186	Silver Maple	<i>Acer saccharinum</i>	34	Poor	Save	6
187	Black Walnut	<i>Juglans nigra</i>	31	Fair	Save	6
188	Silver Maple	<i>Acer saccharinum</i>	48	Poor	Save	park
189	Silver Maple	<i>Acer saccharinum</i>	42	Fair	Save	park
190	Pin oak	<i>Quercus palustris</i>	30	Good	Save	park
191	Red Maple	<i>Acer rubrum</i>	39	Fair	Save	park
192	Red Oak	<i>Quercus rubra</i>	46	Fair, twin	Save	5
193	Red Oak	<i>Quercus rubra</i>	31	Good	Save	5
194	Red Oak	<i>Quercus rubra</i>	38	Good	Save	5
195	Tulip Tree	<i>Liriodendron tulipifera</i>	40	Good	Save	5
196	White Oak	<i>Quercus alba</i>	50	Fair, stream bank	Save	5
197	Red Oak	<i>Quercus alba</i>	32	Fair	Save	5
198	Tulip Tree	<i>Liriodendron tulipifera</i>	30	Good	Save	5
199	Tulip Tree	<i>Liriodendron tulipifera</i>	32	Good	Save	5
200	Tulip Tree	<i>Liriodendron tulipifera</i>	41	Fair	Remove	1A
201	Number not used					
202	Tulip Tree	<i>Liriodendron tulipifera</i>	30	Fair	Save	1b
203	Tulip Tree	<i>Liriodendron tulipifera</i>	32	Good	Save	1b
204	Tulip Tree	<i>Liriodendron tulipifera</i>	30	Fair	Save	1b
205	Tulip Tree	<i>Liriodendron tulipifera</i>	31	Fair	Save	1b
206	Southern Red Oak	<i>Quercus falcata</i>	36	Fair	Save	1b
207	Black Walnut	<i>Juglans nigra</i>	38	Fair	Save	1b
208	Tulip Tree	<i>Liriodendron tulipifera</i>	43	Fair	Save	1b
209	Tulip Tree	<i>Liriodendron tulipifera</i>	45	Fair	Save	offsite
210	Tulip Tree	<i>Liriodendron tulipifera</i>	31	Fair	Remove	1b
211	Number not used					
212	Tulip Tree	<i>Liriodendron tulipifera</i>	30	Fair	Save	1b
213	Tulip Tree	<i>Liriodendron tulipifera</i>	34	Fair	Save	1b
214	Tulip Tree	<i>Liriodendron tulipifera</i>	41	Fair	Save	1b
215	Black Walnut	<i>Juglans nigra</i>	30	Fair	Save	1a
216	Sycamore	<i>Platanus occidentalis</i>	32	Fair	Save	1a
217	Sycamore	<i>Platanus occidentalis</i>	34	Fair	Save	1a
218	Sycamore	<i>Platanus occidentalis</i>	33	Fair	Save	1a
219	Sycamore	<i>Platanus occidentalis</i>	32	Fair	Save	5
220	Red Maple	<i>Acer rubrum</i>	30	Fair	Save	5
221-225	Numbers not used					
226	Tulip Tree	<i>Liriodendron tulipifera</i>	35	Fair	Save	5
227-230	Numbers not used					
231	Tulip Tree	<i>Liriodendron tulipifera</i>	31	Fair	Save	1A
232	Number not used					
233	Tulip Tree	<i>Liriodendron tulipifera</i>	39	Fair	Save	1a
234-235	Numbers not used					
236	Pin Oak	<i>Quercus palustris</i>	34	Fair	Save	5
237	Sweetgum	<i>Liquidambar styraciflua</i>	31	Fair	Save	5
238	Sweetgum	<i>Liquidambar styraciflua</i>	32	Fair, twin	Save	5
239	Sweetgum	<i>Liquidambar styraciflua</i>	30	Fair	Save	5
240	Number not used					
241	Tulip Tree	<i>Liriodendron tulipifera</i>	38	Fair	Save	5
242	Tulip Tree	<i>Liriodendron tulipifera</i>	37	Fair	Save	5
243	Sycamore	<i>Platanus occidentalis</i>	31	Fair	Save	park
244-245	Numbers not used					
246	Sycamore	<i>Platanus occidentalis</i>	41	Fair	Save	park
247	Tulip Tree	<i>Liriodendron tulipifera</i>	48	Fair	Save	park
248	Silver Maple	<i>Acer saccharinum</i>	45	Fair	Save	park
249	Number not used					
250	Black Walnut	<i>Juglans nigra</i>	34	Poor	Save	park
251-253	Numbers not used					
254	Southern Red Oak	<i>Quercus falcata</i>	34	Fair	Save	park
255	Number not used					
256	Tulip Tree	<i>Liriodendron tulipifera</i>	31	Fair	Save	5
257	Tulip Tree	<i>Liriodendron tulipifera</i>	35	Fair	Save	5
258	Tulip Tree	<i>Liriodendron tulipifera</i>	32	Fair	Save	5
259-261	Numbers not used					
262	American Beech	<i>Fagus grandifolia</i>	30	Fair	Save	5
263	Tulip Tree	<i>Liriodendron tulipifera</i>	31	Fair	Save	5
264	Tulip Tree	<i>Liriodendron tulipifera</i>	33	Fair	Save	5
265	Black Walnut	<i>Juglans nigra</i>	33	Poor	Save	5
266-269	Numbers not used					
270	Tulip Tree	<i>Liriodendron tulipifera</i>	53	Fair	Save	5
271-288	Numbers not used					
289	Tulip Tree	<i>Liriodendron tulipifera</i>	31	Fair	Remove	1a
290	Number not used					
291	Virginia Pine	<i>Pinus virginiana</i>	31	Poor	Remove	1a
292	Tulip Tree	<i>Liriodendron tulipifera</i>	31	Fair	Remove	1a
293-294	Numbers not used					
295	Silver Maple	<i>Acer saccharinum</i>	33	Fair	Remove	infra 1
296-299	Numbers not used					
300	Silver Maple	<i>Acer saccharinum</i>	37	Fair	Remove	1a
301	Tulip Tree	<i>Liriodendron tulipifera</i>	34	Fair	Remove	infra 1
302	Tulip Tree	<i>Liriodendron tulipifera</i>	43	Fair	Remove	1a
303	Southern Red Oak	<i>Quercus falcata</i>	30	Fair, 2 of 11 stems	Remove	1a
304	Silver Maple	<i>Acer saccharinum</i>	36	Fair, 2 of 11 stems	Save	1b
305	Silver Maple	<i>Acer saccharinum</i>	34	Fair, 2 of 11 stems	Save	1b
306	Tulip Tree	<i>Liriodendron tulipifera</i>	30	Fair	Save	1b
307-308	Numbers not used					



## F

ED

C

# B

A


**Dewberry**

10003 DEREKWOOD LANE  
SUITE 204  
LANHAM, MD 20706  
301.731.5551  
301.731.0188 (FAX)  
www.dewberry.com

ATTORNEY/CONTACT:  
ROBERT ANTONETTI, JR.  
PH: 301-925-1800

SMITH HOME FARM  
PRINCE GEORGE'S COUNTY  
MARYLAND  
6TH & 15TH ELECTION DISTRICTS  
TAX MAP 90.91 - GRID: MULTIPLE  
ACQUIRED PARCELL 1 PARCELS 13, IV, V, VII, VIII & IX  
2007 MAP REFERENCE: 2005E004-09, 2005E004-09, 207SE003

### KEY PLAN



No.	DATE	BY	Description
-----	------	----	-------------

DRAWN BY:

APPROVED

CHECKED

DATE \_\_\_\_\_

**TITLE**

DEWBERRY JOB NO. 50038403

.....

10

SHEET NO. 10 OF 10

M-NCPPC  
PRINCE GEORGE'S COUNTY  
PLANNING DEPARTMENT  
ENVIRONMENTAL PLANNING SECTION  
APPROVAL  
TREE CONSERVATION PLAN

**TCP11-011-12**

Approved by

Date

K. FINCH

11/28/12

01 K. FINCH 11/07/13

02 K. FINCH 8/20/15

03 *K. Finch* *11/28/12*

04

05

THIS BLOCK IS FOR

OFFICIAL USE ONLY

QR label certifies that this plan  
meets conditions of final approval  
by the Planning Board, its designee  
or the District Council.

M-NCPPC

APPROVAL

PROJECT NAME: SMITH HOME FARM

PROJECT NUMBER: SDP-1003-05

For Conditions of Approval use Site Plan Cover Sheet or Approval Sheet  
Revision numbers must be included in the Project Number