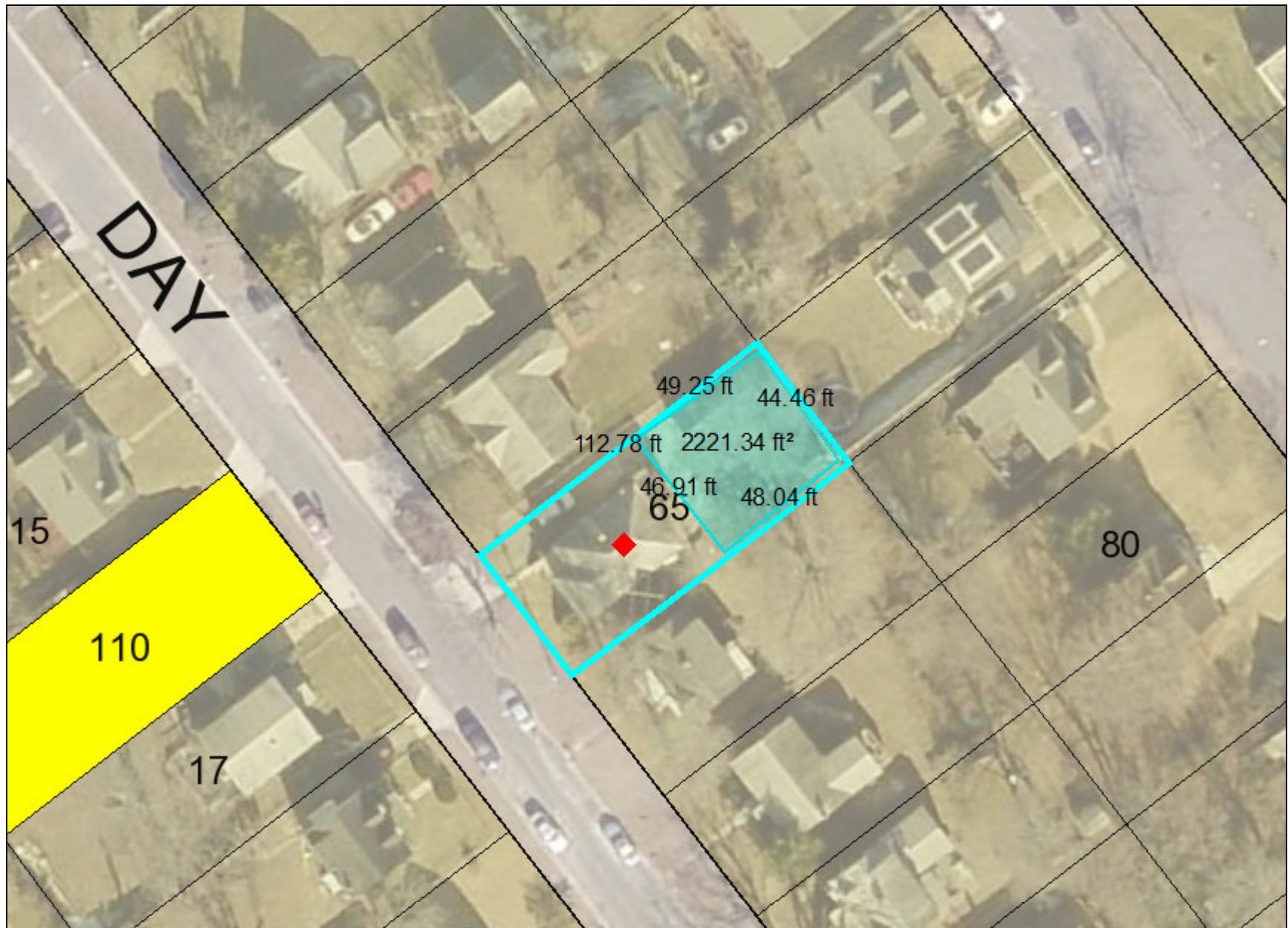


3412 Navy Day Nearby activity_PGAtlas



Legend for 3412 Navy Day Nearby activity_PGAtlas

Property

Road Casings



Property



DAMS

Alternative Compliance



Alternative Development Technique



Certification of Non-Conforming Use



Chesapeake Bay Conservation Plan (Development Activities)



Comprehensive Sketch Plan



Comprehensive Design Plan



Conceptual Site Plan



Conservation Sketch Plan



Departure from Design Standards



Departure from Parking and Loading Spaces



Departure from Sign Design Standards



Detailed Site Plan



Data provided by Prince George's County Planning Department

Final Development Plan





Tree Conservation Plan Exempt (In DAMS)



Vacation



Zoning Map Amendment



POI

Airports



Day Care Centers



Fire Stations



Hospitals



Libraries



Liquor Stores



Senior Retirement Communities



Pawn Shops



Police Stations



Post Offices



Religious Institutions



Schools



Shopping Centers



Train Stations



Existing



Proposed

Historic

Historic Sites and Resources



Historic Resources



Historic Site

Historic District National Register



Historic District PG County



Historic Sites Environmental Settings



Easement

Environmental and Cultural (Platted)



Conservation



Floodplain



Landscape



Water Management

MALPF, HARPP and Rural Legacy



HARPP



MALPF



Rural Legacy

MET (DNR)



Miscellaneous (Platted)







Access



Construction



Negative

-  Signage
-  Trail
-  Utility
-  Water Management

Mount Vernon Scenic Easement Area




Transportation and Circulation (Platted)

-  Access
-  Public Utility
-  Trail

Imagery

2018 Color - 9 inch

Image

-  Red: Band_1
-  Green: Band_2
-  Blue: Band_3

Default

Property Base Fill

