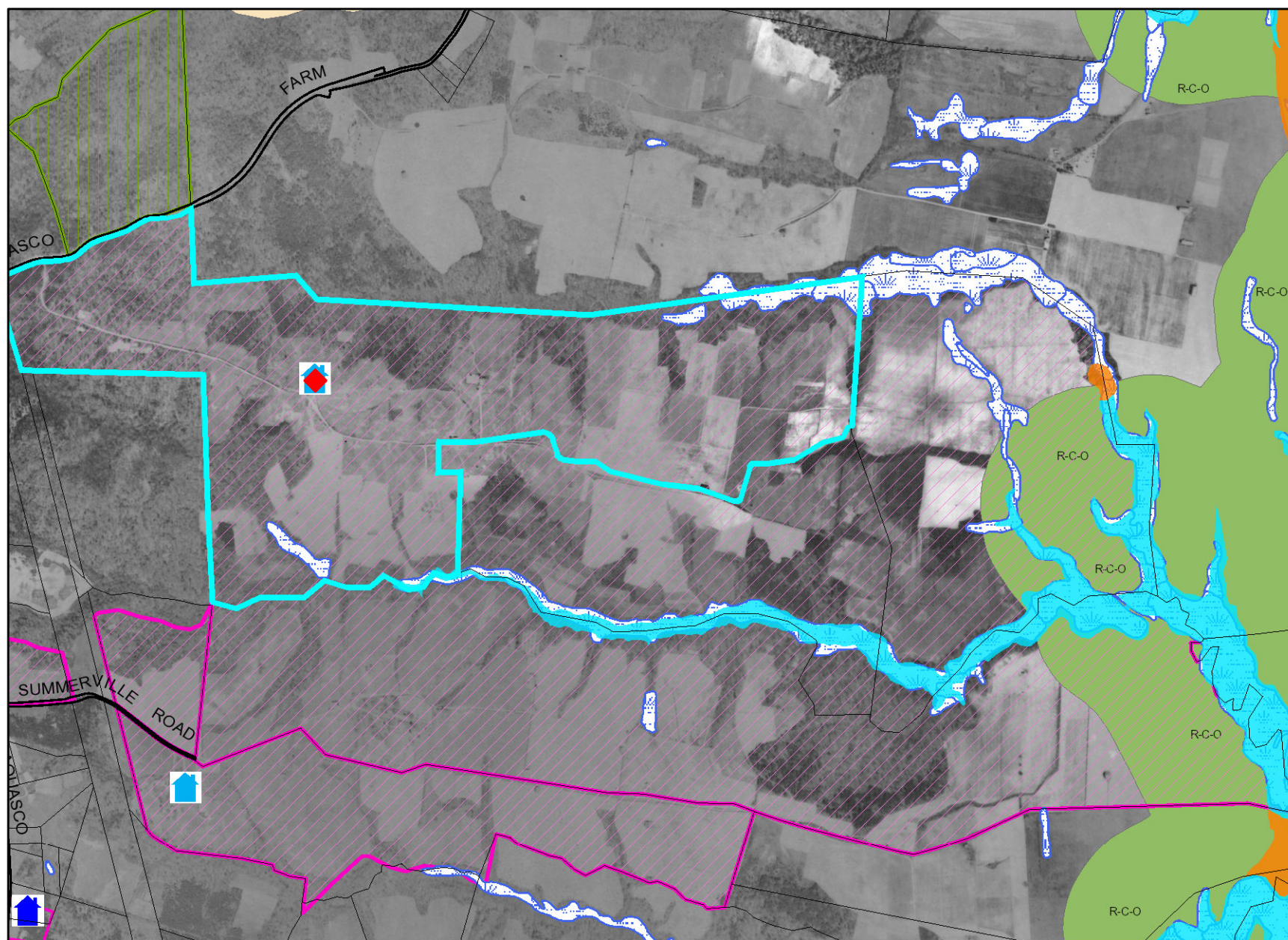


HISTORICAL-CULTURAL-SENSITIVE-ENVIRONMENTAL MAP



Legend for HISTORICAL-CULTURAL-SENSITIVE-ENVIRONMENTAL MAP

Property

Road Casings



Property



Historic

Historic Sites and Resources



Historic Resources



Historic Site

Historic District National Register



Historic District PG County



Historic Sites Environmental Settings



Environmental

Floodplain (FEMA - 2016)



1% Annual Chance Flood Hazard



Regulatory Floodway



Open Water



0.2% Annual Chance Flood Hazard



Area with Reduced Risk Due to Levee

Area of Minimal Flood Hazard

Sensitive Species Review (DNR)



Wetland (DNR)



Easement

Environmental and Cultural (Platted)



Conservation



Floodplain



Landscape



Water Management

MALPF, HARPP and Rural Legacy



HARPP



MALPF



Rural Legacy

Administrative

Chesapeake Bay Critical Area Overlay (1988)



I-D-O (Intense Development Overlay)



L-D-O (Limited Development Overlay)



R-C-O (Resource Conservation Overlay)

Imagery

1938 Grayscale 1 foot

Image



High : 255

Low : 0

Default

Property Base Fill

