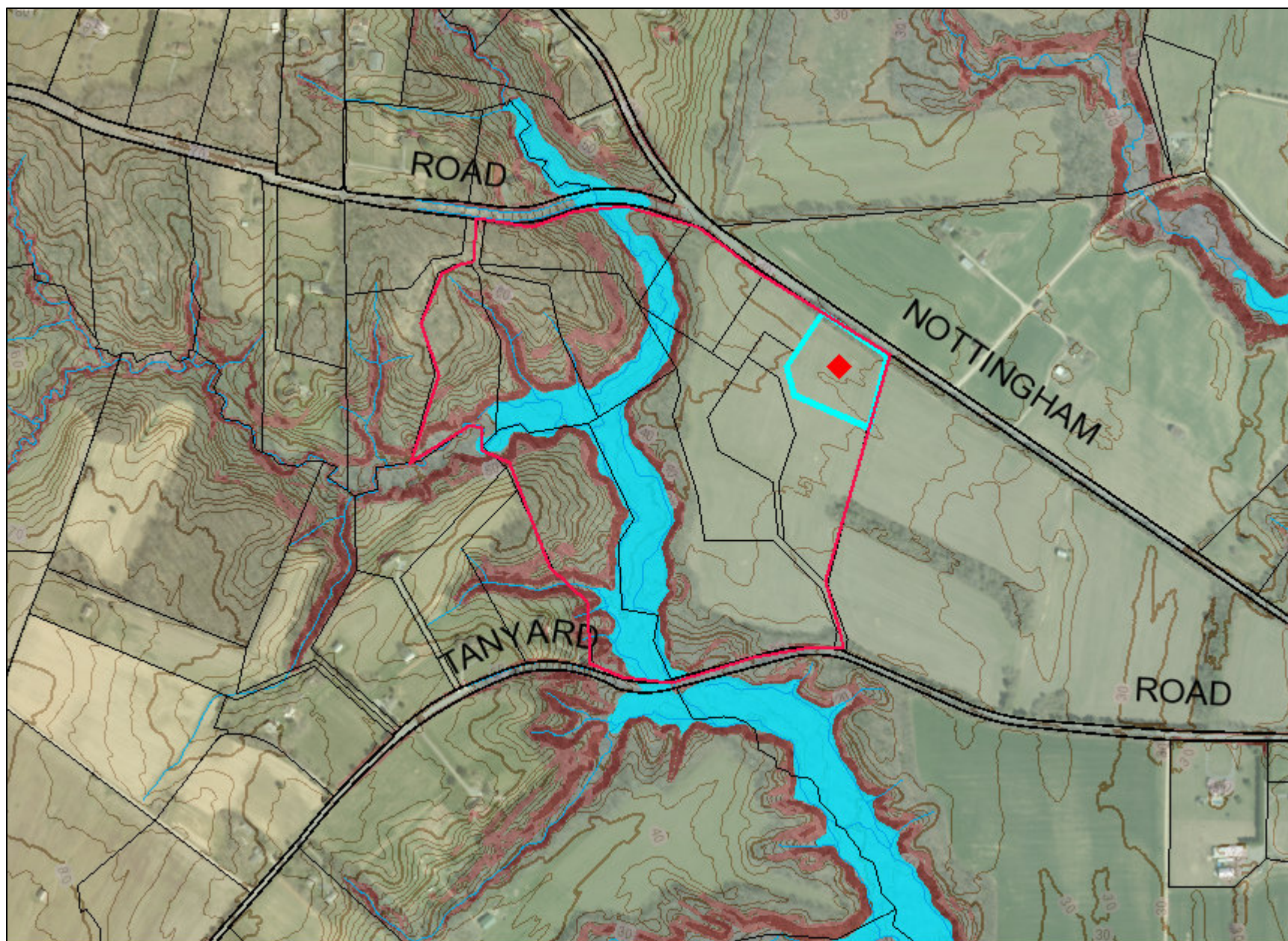


# ENVIROMENTAL / FLOODPLAIN / CULTURAL / SENSITIVE SPECIES MAP



# Legend for ENVIROMENTAL / FLOODPLAIN / CULTURAL / SENSITIVE SPECIES MAP

## Property

Road Casings



Property



## Historic

Historic Sites and Resources



Historic Resources



Historic Site

Historic District National Register



Historic District PG County



Historic Sites Environmental Settings



## Environmental

Stream Center and Drainage (2017)



Floodplain (FEMA - 2016)



1% Annual Chance Flood Hazard



Regulatory Floodway



Open Water



0.2% Annual Chance Flood Hazard



Area with Reduced Risk Due to Levee

Area of Minimal Flood Hazard

Sensitive Species Review (DNR)



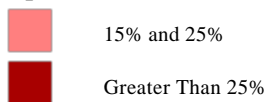
Data provided by Prince George's County Planning Department

Wetland of Special State Concern - Poly (DNR)

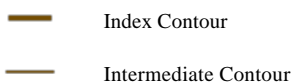


## Elevation

### Slope (2014)



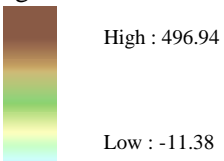
### Contour - 2 Ft (2014)



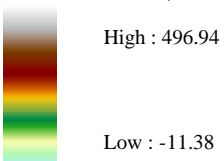
### Ground Control (2014)



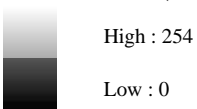
### Digital Elevation Model (2014)



### Shaded Relief (Color) (2014)



### Shaded Relief (Grayscale) (2014)



## Imagery

### 2017 Color - 6 inch

#### Image



## Default

### Property Base Fill

