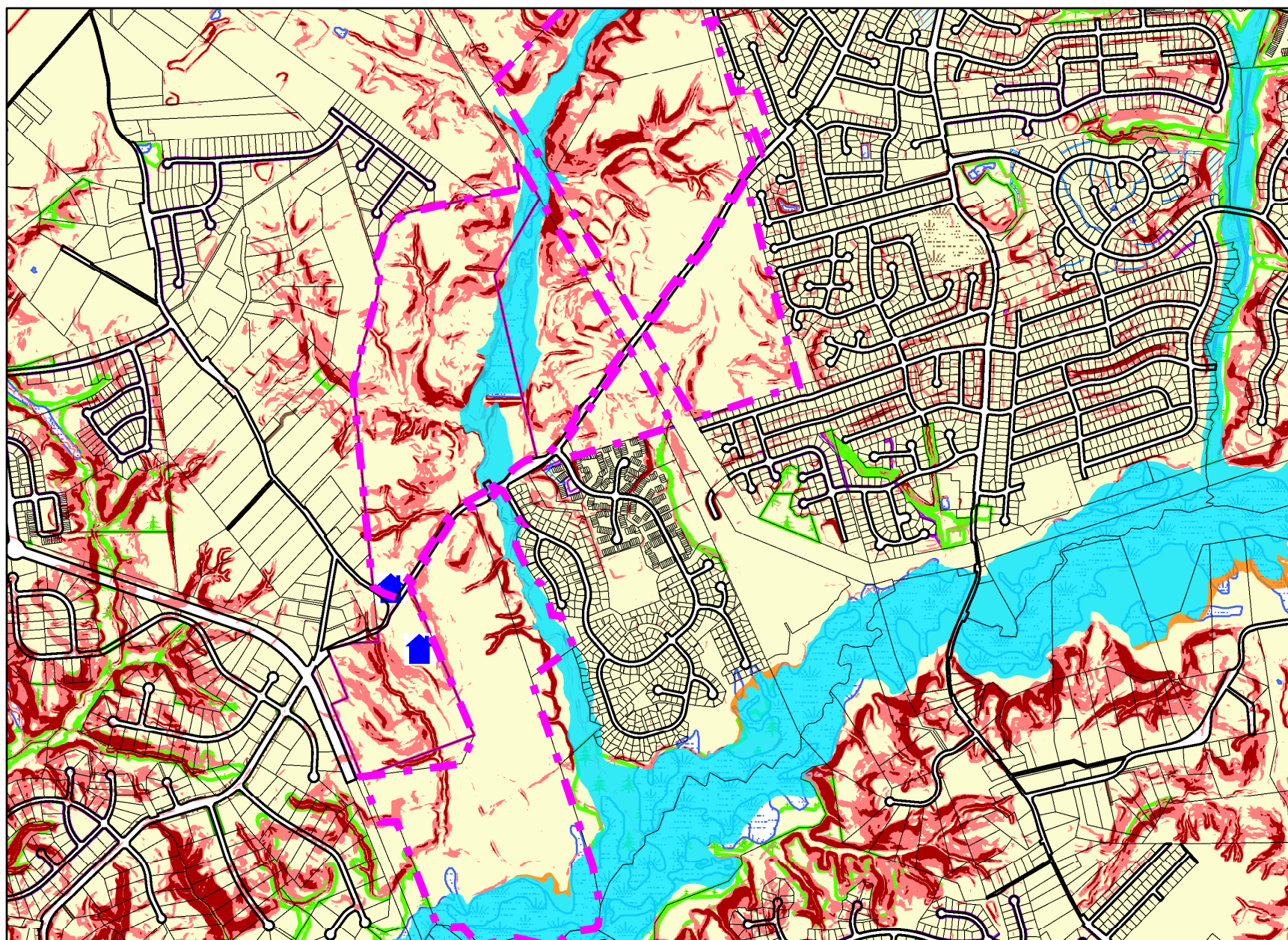


Cosca Regional Park



Legend for Cosca Regional Park

Property

Road Casings



Property



Historic

Historic Sites and Resources



Historic Resources



Historic Site

Historic District National Register



Historic District PG County



Historic Sites Environmental Settings



Environmental

Floodplain (FEMA - 2016)



1% Annual Chance Flood Hazard



Regulatory Floodway



Open Water



0.2% Annual Chance Flood Hazard



Area with Reduced Risk Due to Levee

Area of Minimal Flood Hazard

Slope (2018)



15% and 25%



Greater Than 25%

Wetland of Special State Concern - Line (DNR)

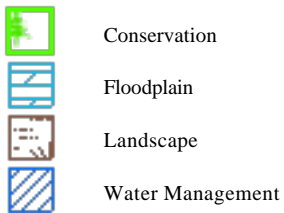


Wetland (DNR)
Data provided by Prince George's County Planning Department

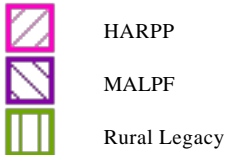


Easement

Environmental and Cultural (Platted)



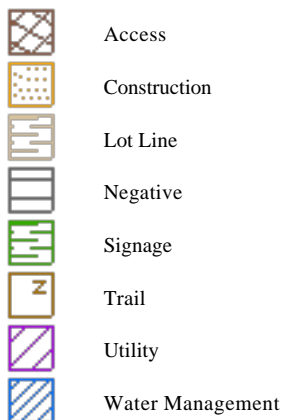
MALPF, HARPP and Rural Legacy



MET (DNR)



Miscellaneous (Platted)



Mount Vernon Scenic Easement Area



Transportation and Circulation (Platted)



Default

Property Base Fill

