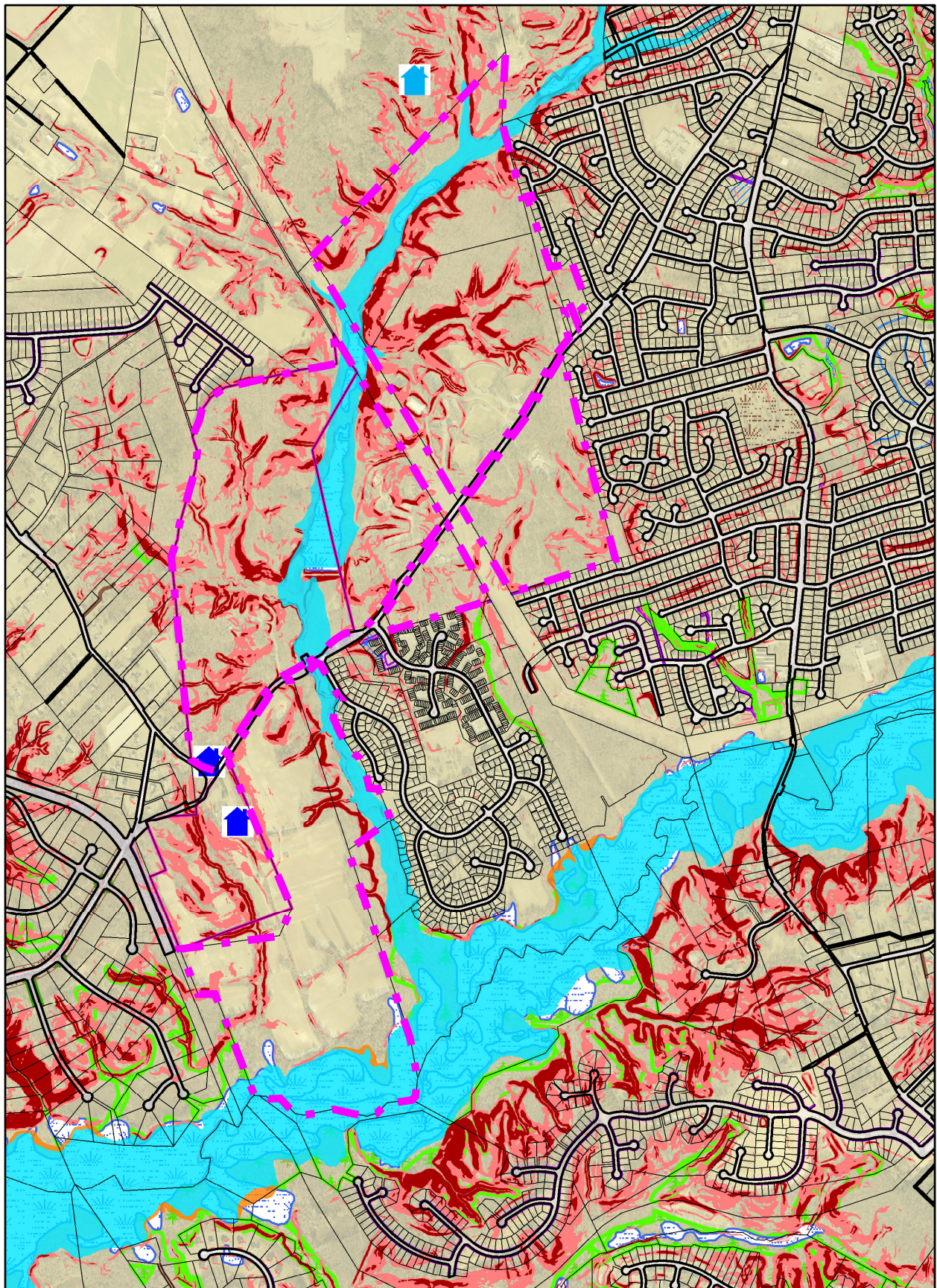


8.5x11_Portrait



Property

Road Casings



Property



Historic

Historic Sites and Resources



Historic Resources



Historic Site

Historic District National Register



Historic District PG County



Historic Sites Environmental Settings



Environmental

Floodplain (FEMA - 2016)



1% Annual Chance Flood Hazard



Regulatory Floodway



Open Water



0.2% Annual Chance Flood Hazard



Area with Reduced Risk Due to Levee

Area of Minimal Flood Hazard

Slope (2018)



15% and 25%



Greater Than 25%

Wetland of Special State Concern - Line (DNR)



Wetland (DNR)



Easement

Environmental and Cultural (Platted)



Conservation



Floodplain



Landscape



Water Management

MALPF, HARPP and Rural Legacy



HARPP



MALPF



Rural Legacy

MET (DNR)



Miscellaneous (Platted)



Access



Construction



Lot Line



Negative



Signage



Trail



Utility



Water Management

Data provided by Prince George's County Planning Department

Mount Vernon Scenic Easement Area



Transportation and Circulation (Platted)



Access



Public Utility



Trail

Imagery

2018 Color - 9 inch

Image



Red: Band_1



Green: Band_2



Blue: Band_3

Default

Property Base Fill

