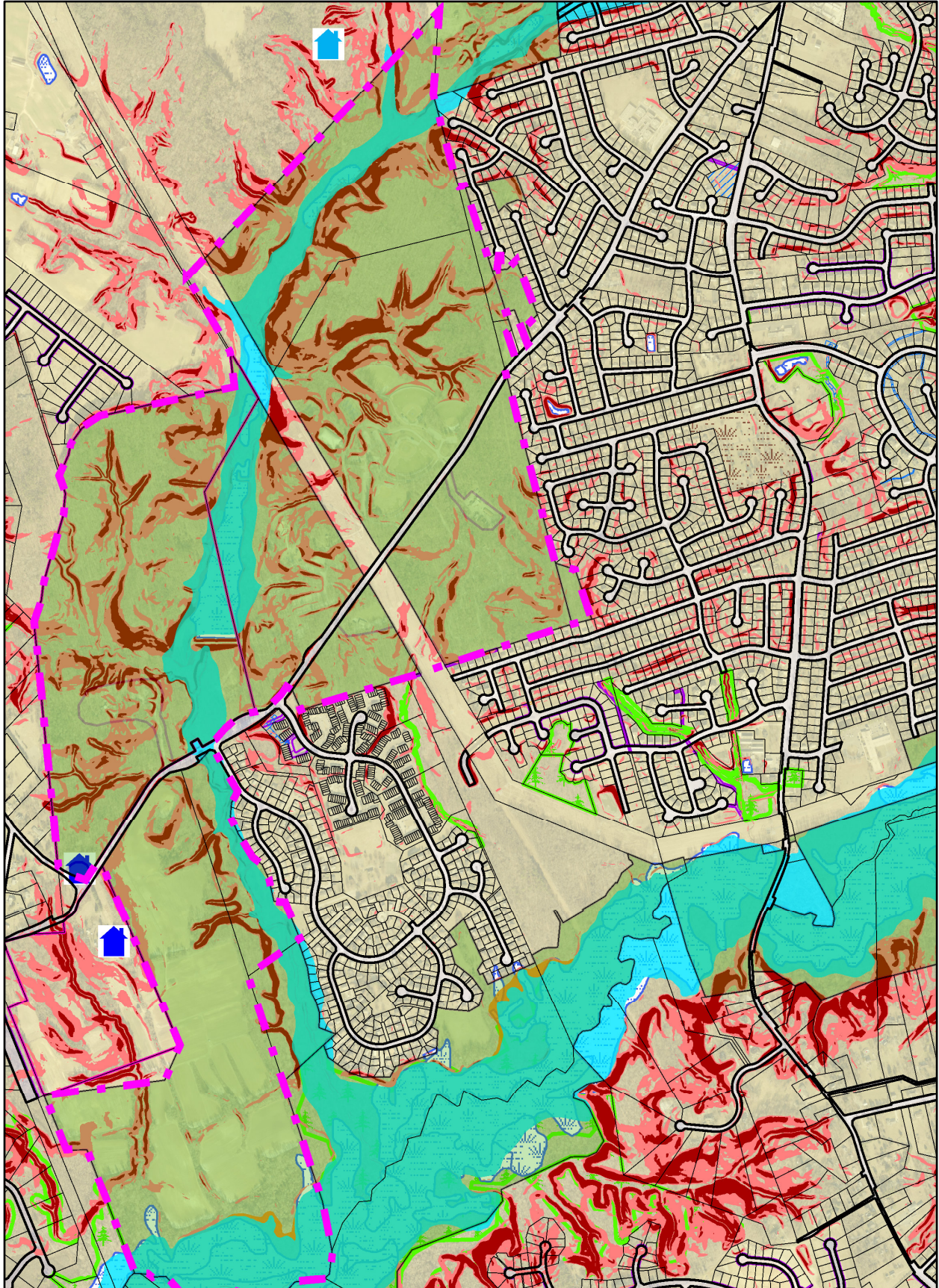


Cosca Regional Park



Legend for Cosca Regional Park

Property

Road Casings



Property



Parks

M-NCPPC Parks



Historic

Historic Sites and Resources



Historic Resources



Historic Site

Historic District National Register



Historic District PG County



Historic Sites Environmental Settings



Environmental

Floodplain (FEMA - 2016)



1% Annual Chance Flood Hazard



Regulatory Floodway



Open Water



0.2% Annual Chance Flood Hazard



Area with Reduced Risk Due to Levee

Area of Minimal Flood Hazard

Slope (2018)



15% and 25%



Greater Than 25%

Wetland of Special State Concern - Line (DNR)



Wetland (DNR)



Easement

Environmental and Cultural (Platted)



Conservation



Floodplain



Landscape



Water Management

MALPF, HARPP and Rural Legacy



HARPP



MALPF



Rural Legacy

MET (DNR)



Miscellaneous (Platted)



Access



Construction



Lot Line





Negative



Signage



Trail

-  Utility
-  Water Management

Mount Vernon Scenic Easement Area



Transportation and Circulation (Platted)

-  Access
-  Public Utility
-  Trail

Imagery

2018 Color - 9 inch

Image

-  Red: Band_1
-  Green: Band_2
-  Blue: Band_3

Default

Property Base Fill

