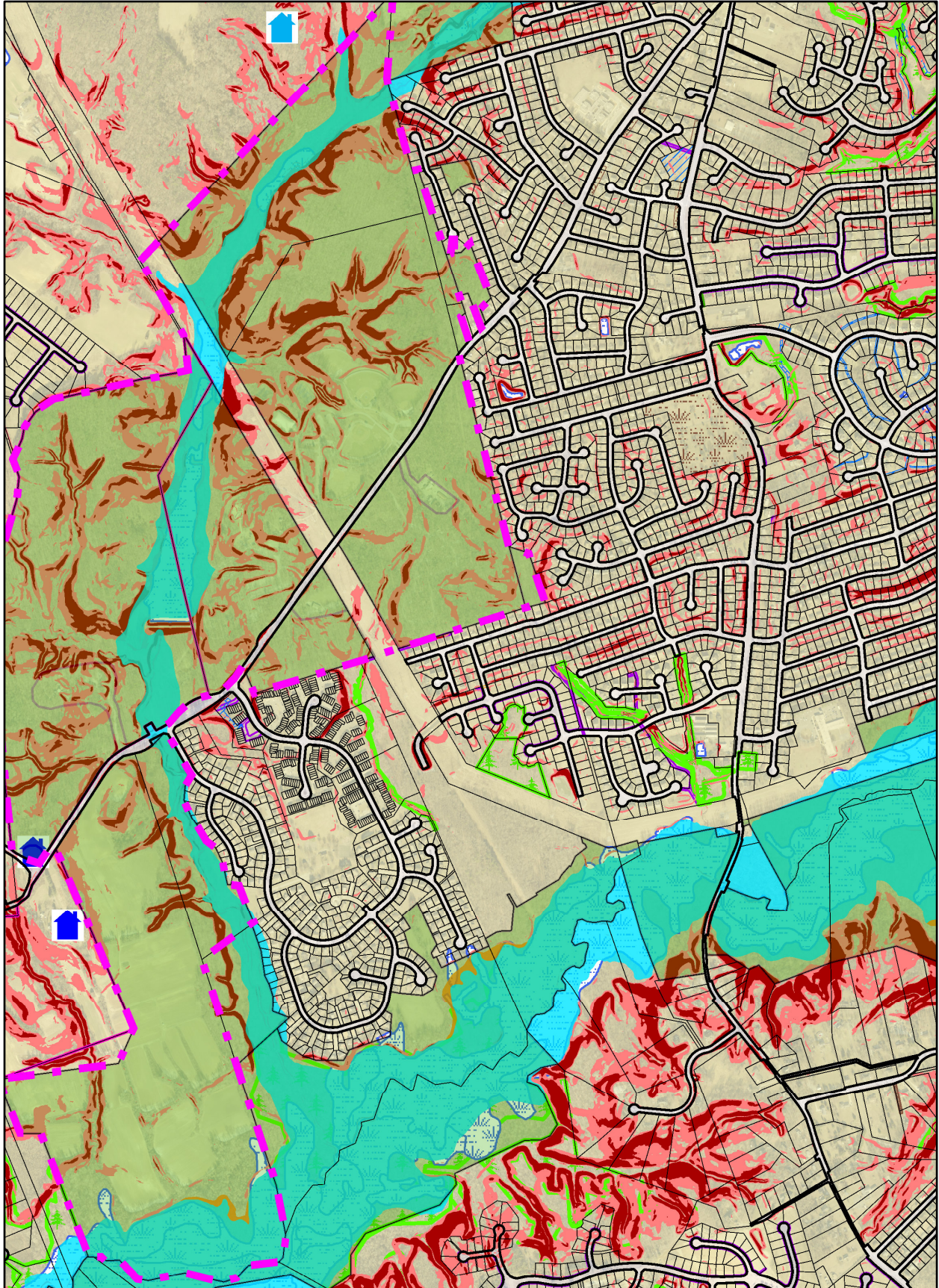


# Cosca Regional Park





# Legend for Cosca Regional Park

## Property

Road Casings



Property



## Parks

M-NCPPC Parks



## Historic

Historic Sites and Resources



Historic Resources



Historic Site

Historic District National Register



Historic District PG County



Historic Sites Environmental Settings



## Environmental

Floodplain (FEMA - 2016)



1% Annual Chance Flood Hazard



Regulatory Floodway



Open Water



0.2% Annual Chance Flood Hazard



Area with Reduced Risk Due to Levee

Area of Minimal Flood Hazard

Slope (2018)



15% and 25%



Greater Than 25%

Wetland of Special State Concern - Line (DNR)



Wetland (DNR)



## Easement

Environmental and Cultural (Platted)



Conservation



Floodplain



Landscape



Water Management

MALPF, HARPP and Rural Legacy



HARPP



MALPF



Rural Legacy

MET (DNR)



Miscellaneous (Platted)



Access



Construction



Lot Line





Negative



Signage



Trail

-  Utility
-  Water Management

Mount Vernon Scenic Easement Area



Transportation and Circulation (Platted)

-  Access
-  Public Utility
-  Trail

Imagery

2018 Color - 9 inch

Image

-  Red: Band\_1
-  Green: Band\_2
-  Blue: Band\_3

Default

Property Base Fill

