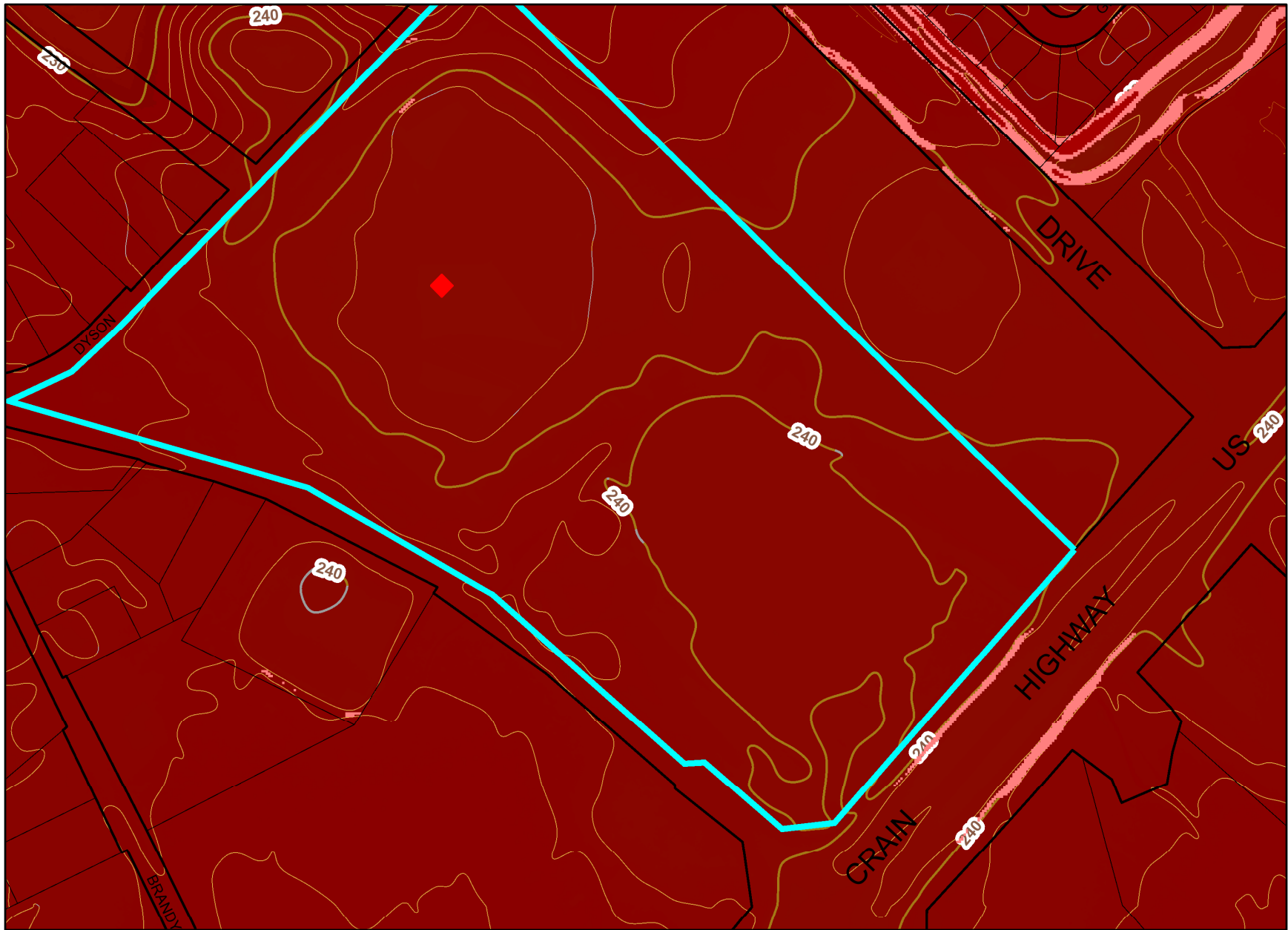


Gwynn Park High School



Legend for Gwynn Park High School

Property

Road Casings



Property



Environmental

Slope (2018)



15% and 25%



Greater Than 25%

Elevation

Slope (2018)



Slopes between 15% and 25%



Slopes greater than 25%

Contour - 2 Ft (2018)



7101 (Index Contour)



7102 (Intermediate Contour)



7103 (Index Depression Contour)



7104 (Intermediate Depression Contour)



7105 (Index Hidden Contour)



7106 (Intermediate Hidden Contour)



7107 (Index Hidden Depression Contour)



7108 (Intermediate Hidden Depression Contour)

Shaded Relief (Color) (2018)



High : 507

Low : -13

Imagery

2020 Color - 4 inch

Image



Data provided by Prince George's County Planning Department



Green: Band_2



Blue: Band_3

Default

Property Base Fill

