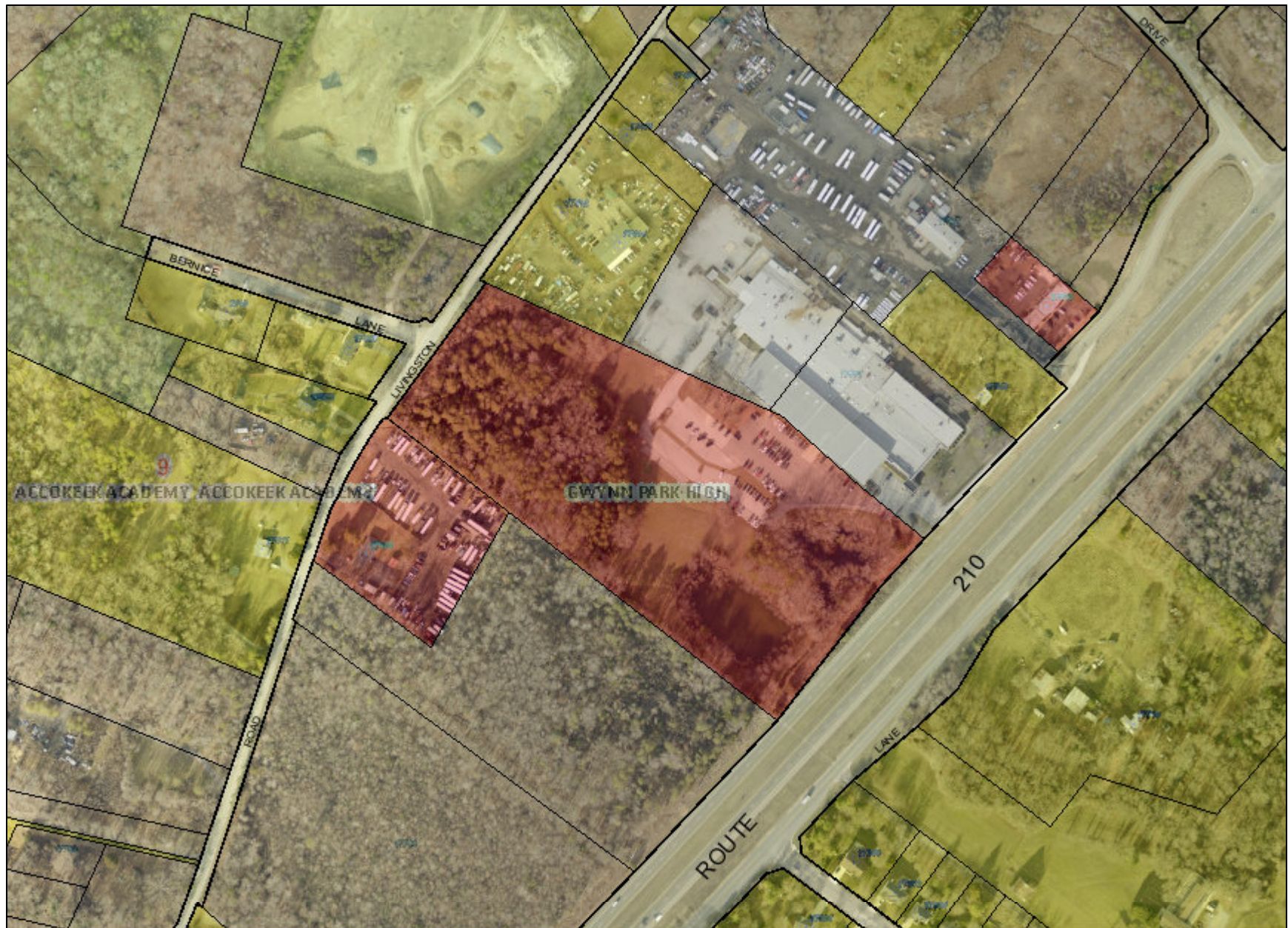


BERRETA-3



Legend for BERRETA-3

Property

Road Casings



Property



Administrative

Ground Control (2017)



Address Point



General Plan Policy Area (2035)



Employment Areas



Future Water and Sewer Service Areas

Land Use - Existing (Property Info)



Parks and Open Space



Agricultural - Natural Resources



Residential - Single Family



Residential - Attached



Residential - Townhouse



Residential - Multi-family



Commercial



Office



Mixed Use



Institutional



Institutional - Church



Industrial



Transportation and Utilities



Vacant



Not Classified

Data provided by Prince George's County Planning Department

General Plan Growth Policy (2035)

- Established Communities
- Rural and Agricultural Areas

BRAC Zone (MDP)



Building (2017)

- Buildings
- Buildings Under Construction
- Overhead Rooftops/Canopies
- Parking Garage
- Ruins

Chesapeake Bay Critical Area Overlay (1988)

- I-D-O (Intense Development Overlay)
- L-D-O (Limited Development Overlay)
- R-C-O (Resource Conservation Overlay)

Community Plan (As Approved)

- Master Plan
- Sector Plan
- Transit District Development Plan

Congressional District



Councilmanic District (2014)



Development Review District



Election District (2014)



Election Precinct (2014)



Electric Utility Service Area

- BGE
- PEPCO
- SMECO

School Boundary - Elementary (Board of Ed)



Enterprise Zone (MD Dept of Commerce)



Enterprise Zone Focus Area (MD Dept of Commerce)



Gas Utility Service Area



BGE



SMECO



WASHGAS

General Plan Center (2002, Archived)



Community Center



Metropolitan Center



Regional Center

General Plan Center (2035)



General Plan Corridor (2002, Archived)



Corridor



Corridor with Limited Access Highway

General Plan Tier (2002, Archived)



Developed



Developing



Rural

General Plan Generalized Future Land Use (2035)



Mixed-Use



Commercial



Employment / Industrial



Institutional



Residential High



Residential Medium-High



Residential Medium



Rural and Agricultural



Parks and Open Space

School Boundary - High (Board of Ed)



Historically Underutilized Business Zone (SBA)



JB Andrews Land Use Control Area



A LUC exists in this area



A LUC may exist on a portion of this property.

No LUC exists on this property

Legislative District



School Boundary - Middle (Board of Ed)



Municipal Boundary



Municipal Quarter Mile Buffer



Municipal Half Mile Buffer



Municipal One Mile Buffer



Opportunity Zone (IRS)



Place Name

Planning Area



Priority Funding Area (MDP)



Priority Preservation Area



Public Land



Revitalization Tax Credit



Special Tax District



Sustainable Community (MDP)



Sustainable Growth Act



Tier 1 (Approved for sewer service)



Tier 2 (Planned for public sewer service)



Tier 3 (Not planned, zoned for public sewer service or preservation)



Tier 4 (Not planned, zoned for public sewer service; planned for conservation)

Traffic Analysis Zone (COG)



Traffic Analysis Zone (PG County)



Tax Gridline



1 (Exterior)



2 (Interior)

Tax Grid



TIF District



Transforming Neighborhoods Initiative Area



WSSC Grid



WSSC Grid Coordinates



WSSC Sub Grid






Interior Cell Boundary



WSSC Tile Boundary

Zip Code



-  Master Plan
-  Sector Plan
-  Transit District Development Plan

CPD Planner Responsibilities



Rail Station Quarter Mile Buffer



Police District



Imagery

2020 Color - 4 inch

Image



Red: Band_1



Green: Band_2



Blue: Band_3

Default

Property Base Fill

