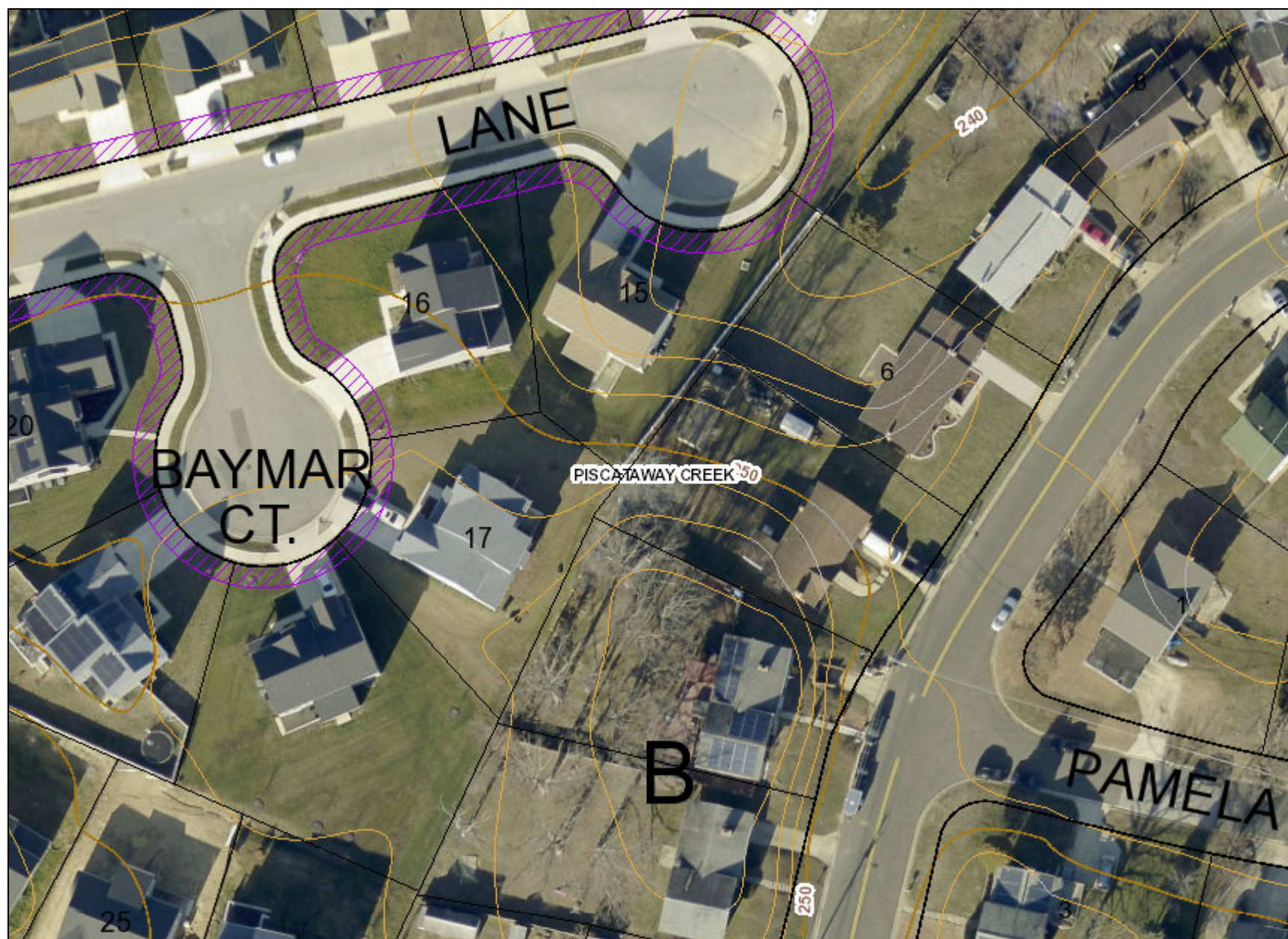


N



# Legend for 9502 Lormar Lane

## Property

Road Casings



Property



## WaterSewer

Sewer Basin (WSSC)



## Environmental

Stream Center and Drainage (2017)



## Elevation

Contour - 2 Ft (2018)



7101 (Index Contour)



7102 (Intermediate Contour)



7103 (Index Depression Contour)



7104 (Intermediate Depression Contour)



7105 (Index Hidden Contour)



7106 (Intermediate Hidden Contour)



7107 (Index Hidden Depression Contour)



7108 (Intermediate Hidden Depression Contour)

## Easement

Environmental and Cultural (Platted)



Conservation



Floodplain



Landscape



Water Management

MALPF, HARPP and Rural Legacy



Data provided by Prince George's County Planning Department



MALPF



Rural Legacy

MET (DNR)



Miscellaneous (Platted)



Access



Construction



Lot Line



Negative



Signage



Trail



Utility



Water Management

Mount Vernon Scenic Easement Area



Transportation and Circulation (Platted)



Access



Public Utility



Trail

## Imagery

2020 Color - 4 inch

Image



Red: Band\_1



Green: Band\_2



Blue: Band\_3

## Default

Property Base Fill

