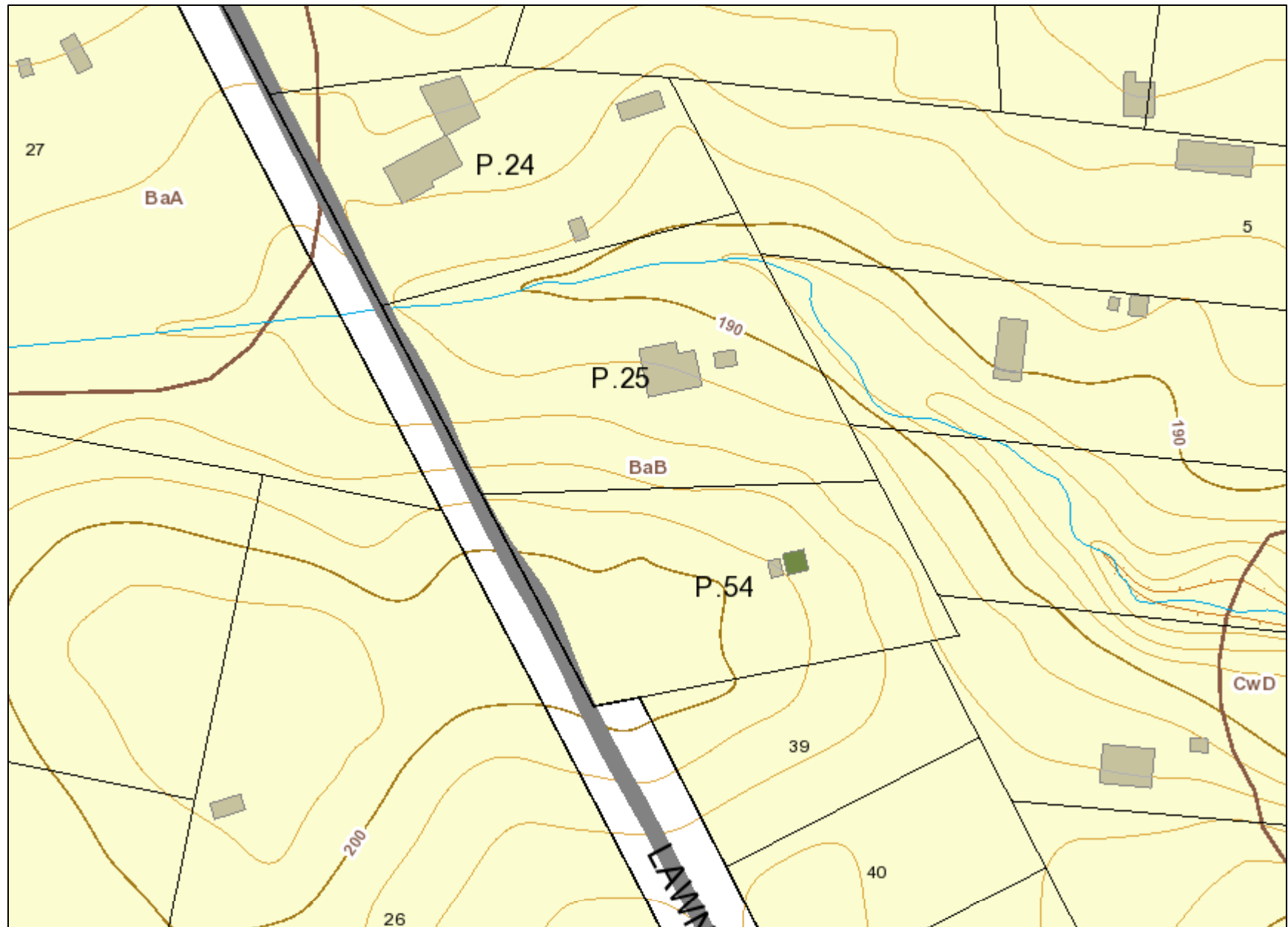


GIS SOILS & Marlboro Clay MAP



Legend for GIS SOILS & Marlboro Clay MAP

Property

Road Casings



Property



Transportation

Pavement (2017)



Street



Parking

Environmental

Stream Center and Drainage (2017)



Marlboro Clay



Evaluation_Zone



Present

Soil (NRCS)



Elevation

Contour - 2 Ft (2018)



7101 (Index Contour)



7102 (Intermediate Contour)



7103 (Index Depression Contour)



7104 (Intermediate Depression Contour)



7105 (Index Hidden Contour)



7106 (Intermediate Hidden Contour)



7107 (Index Hidden Depression Contour)







7108 (Intermediate Hidden Depression Contour)

Administrative

Building (2017)
Data provided by Prince George's County Planning Department



Buildings

-  Buildings Under Construction
-  Overhead Rooftops/Canopies
-  Parking Garage
-  Ruins

Default

Property Base Fill

