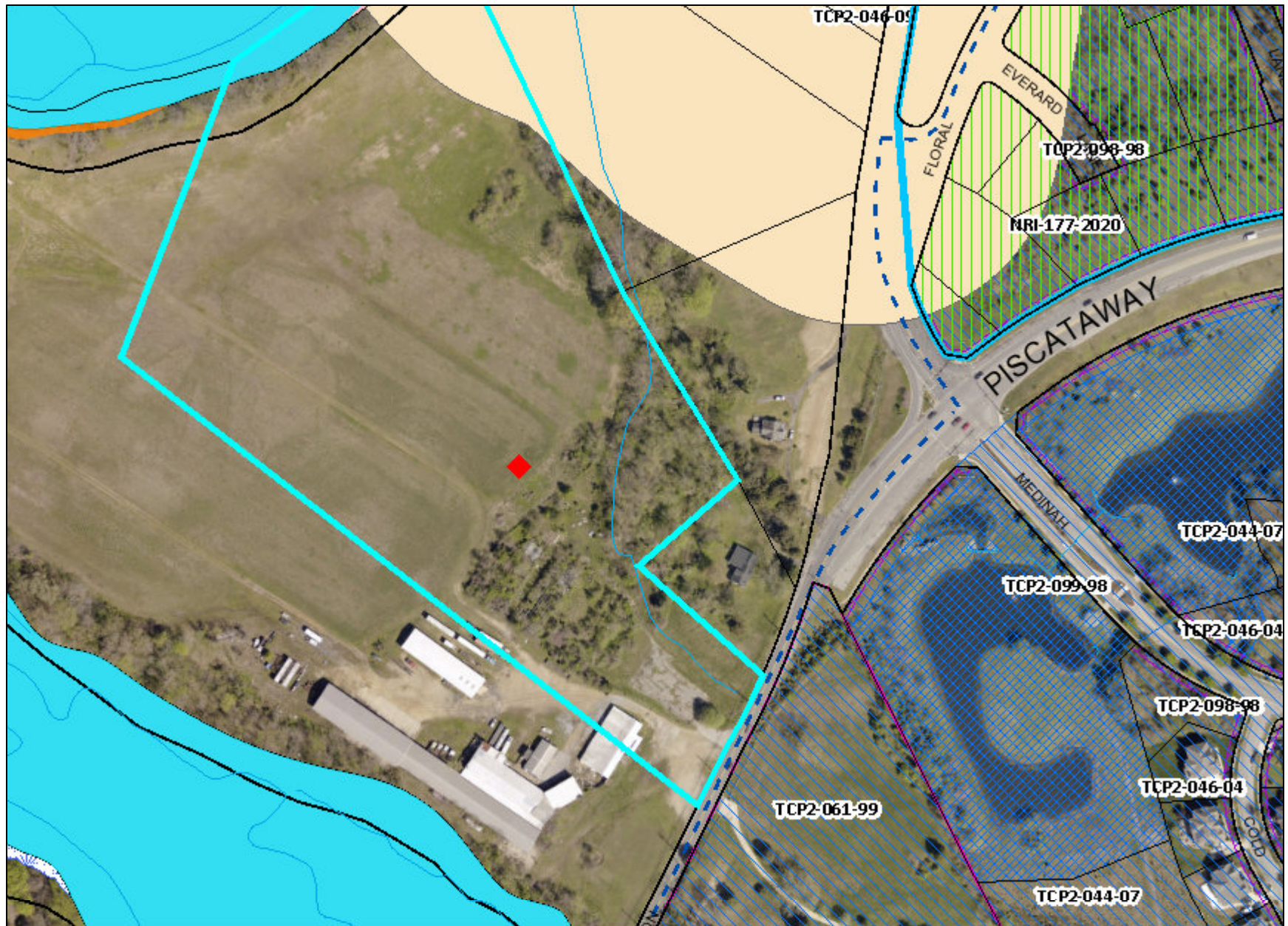


MR-2107F



# Legend for MR-2107F

## Property

Road Casings



Property




## Transportation

Scenic and Historic Road

 Historic


 Scenic

 Scenic and Historic

## Historic

Historic Sites and Resources (HAWP Required)

 Historic Resources

 Historic Site

Historic District National Register (HAWP Not Required)



Historic District PG County (HAWP Required)



Historic Sites Environmental Settings (HAWP Required)



## Environmental


Stream Center and Drainage (2017)





Floodplain - Consultant Study (DPIE)




Floodplain (FEMA - 2016)

 1% Annual Chance Flood Hazard

 Regulatory Floodway

 Open Water

 0.2% Annual Chance Flood Hazard



Area with Reduced Risk Due to Levee

Area of Minimal Flood Hazard

Floodplain (DPIE)



Marlboro Clay



Evaluation\_Zone



Present

Natural Resource Inventory



Sensitive Species Review (DNR)



Tree Conservation Plan 2



Tree Conservation Plan Exempt



Wetland of Special State Concern - Line (DNR)



Wetland of Special State Concern - Poly (DNR)



Wetland (DNR)



## Easement

Environmental and Cultural (Platted)



Conservation



Floodplain



Landscape



Water Management

MALPF, HARPP and Rural Legacy



HARPP



MALPF




Rural Legacy

Data provided by Prince George's County Planning Department

Miscellaneous (Platted)



Access

-  Construction
-  Lot Line
-  Negative
-  Signage
-  Trail
-  Utility
-  Water Management

Mount Vernon Scenic Easement Area



Transportation and Circulation (Platted)

-  Access
-  Public Utility
-  Trail

Zoning

Chesapeake Bay Critical Overlay (2015)



Imagery

2020 Color - 4 inch

Image

-  Red: Band\_1
-  Green: Band\_2
-  Blue: Band\_3

Default

Property Base Fill

