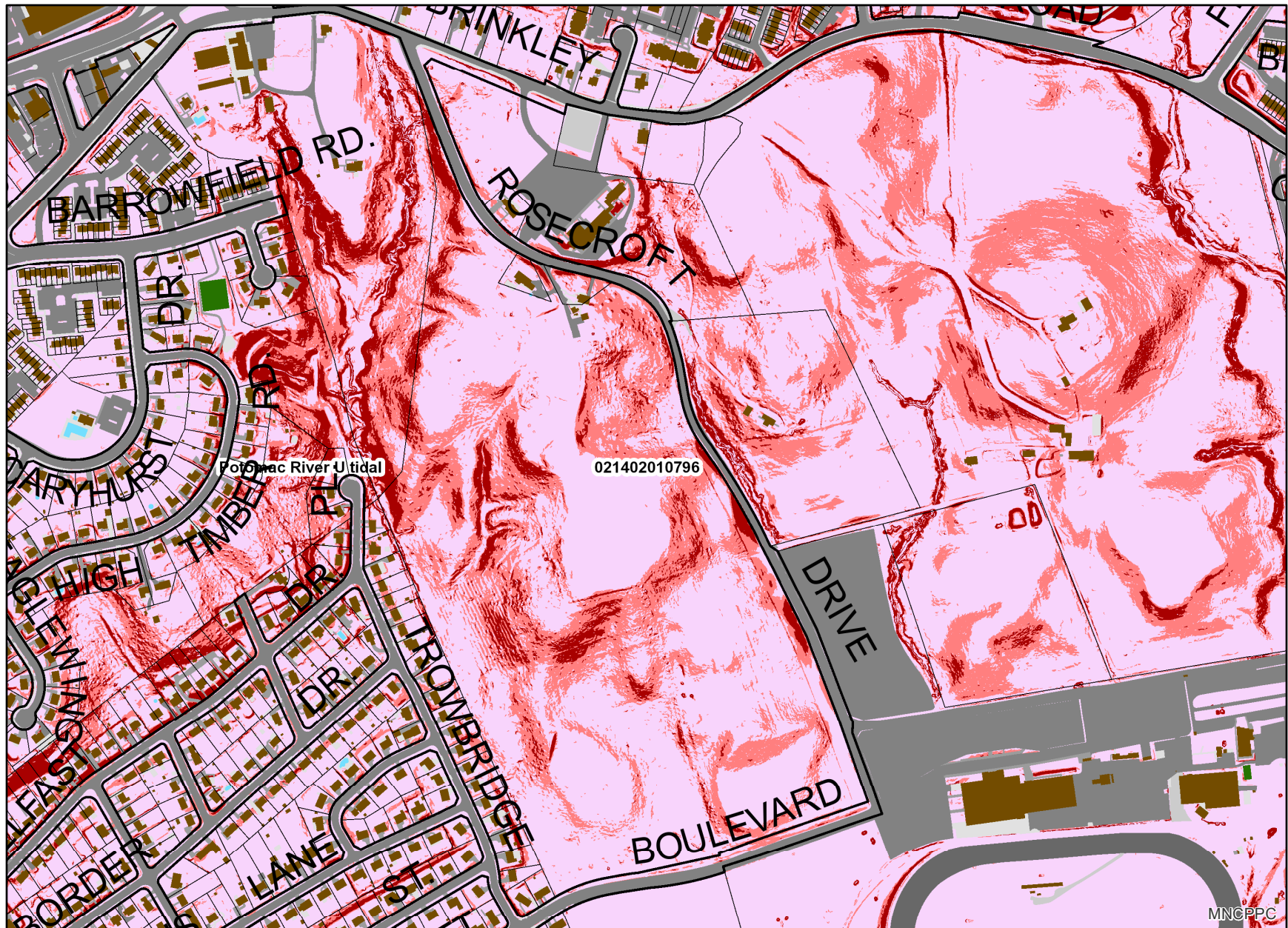


8.5X11_Landscape



Property

Road Casings

Property

Environmental

Impervious Surface (2020)

Asphalt

Athletic

Bridge - Asphalt

Bridge - Concrete

Bridge - Paved

Bridge - Uncertain

Bridge - Wood

Buildings

Concrete

Dam

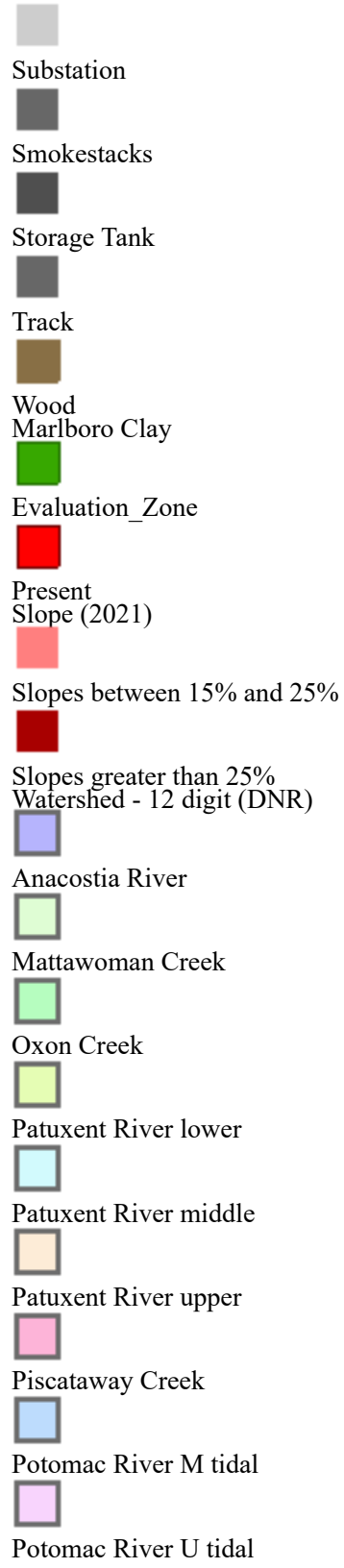
Paved

Gravel

Helipad

Patio

Pool





Rocky Gorge Dam



Western Branch



Zekiah Swamp

Wetland of Special State Concern - Line (DNR)



Wetland of Special State Concern - Poly (DNR)



Wetland (DNR)



Woodland Conservation Area



Planted



Retained



Retained, Not Credited

Default

Property Base Fill

