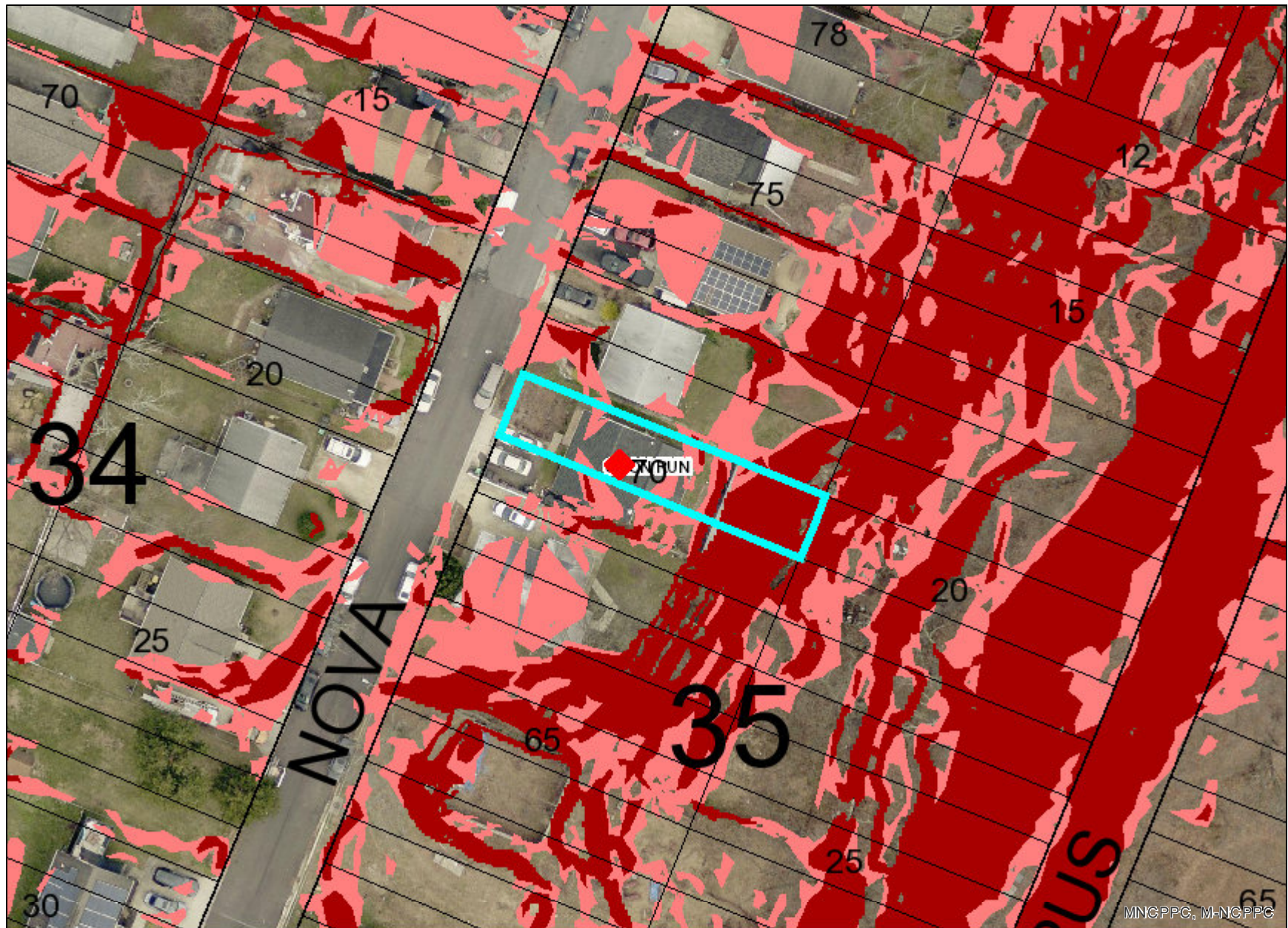


# Imani Damali



# Legend for Imani Damali

## Property

Road Casings



Property



## Sewer and Water

Sewer Basin (WSSC)



## Historic

Historic Sites and Resources (HAWP Required)



Historic Resources



Historic Site

Historic District PG County (HAWP Required)



Historic District National Register (HAWP Not Required)



Historic Sites Environmental Settings (HAWP Required)



## Elevation

Slope (2021)



Slopes between 15% and 25%



Slopes greater than 25%

## Latest Imagery

2023 Color (May) - 3 inch

Image



Red: Band\_1



Green: Band\_2



Blue: Band\_3

**Default**  
Property Base Fill

