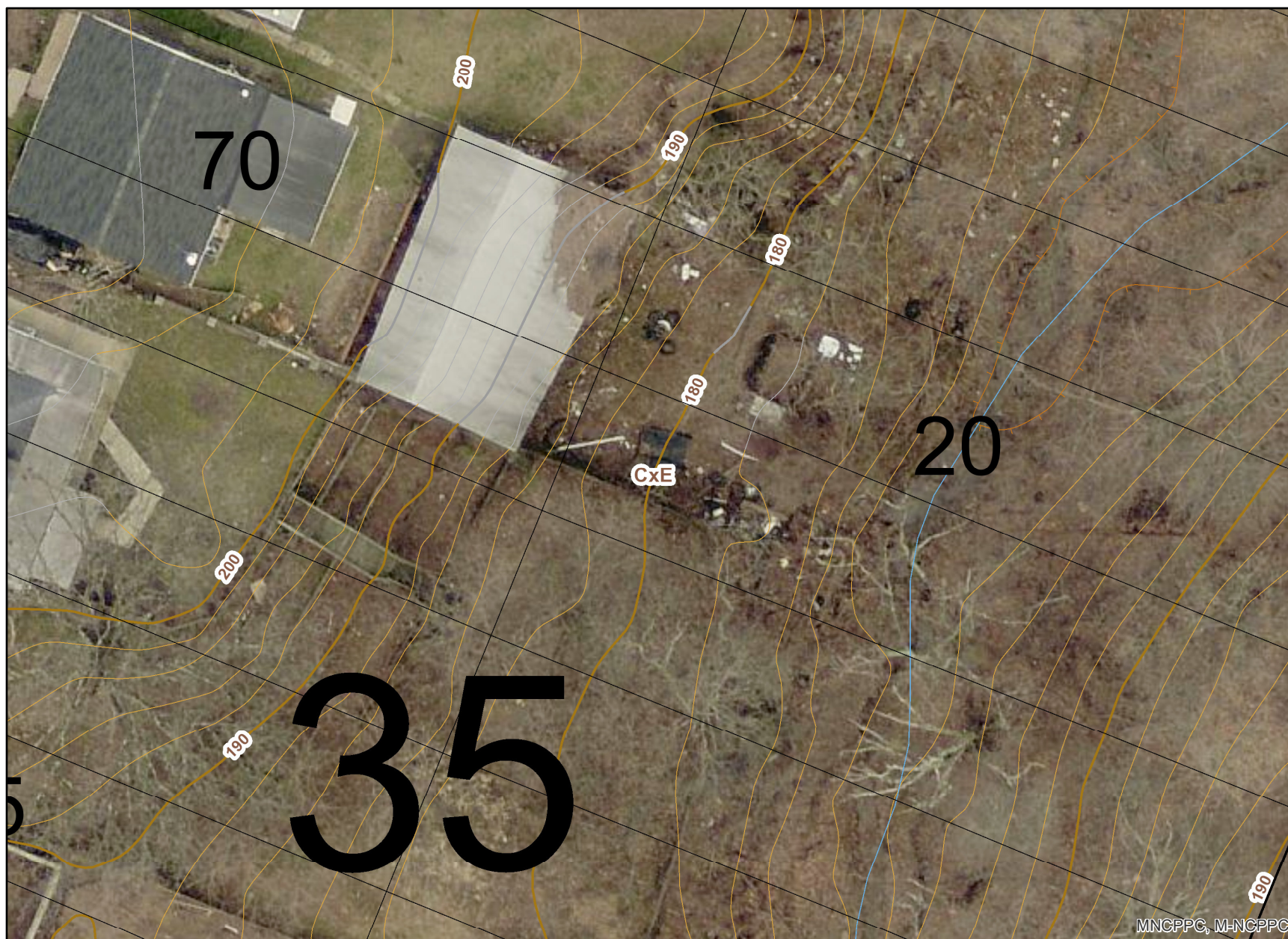


Imani Damali | 1012 Nova Ave, Capitol Heights | F1799/T1805



# Legend for Imani Damali | 1012 Nova Ave, Capitol Heights | F1799/T1805

## Property

Road Casings



Property



## Environmental

Stream Center and Drainage (2020)



Bulkhead



Dam



Drainage Connector



Floodwall



Headwall



Hidden Single Line Stream



Hidden Stream Poly Centerlines



Hidden Water Canal



Hidden Water Cooling Channel



Single Line Stream



Stream Poly Centerlines



Water Canal











Water Cooling Channel  
Sensitive Species Review (DNR)



Soil (NRCS)

-  Woodland Conservation Area
-  Planted
-  Retained
-  Retained, Not Credited

**Elevation**

- Contour - 2 Ft (2021)  

- 7101 (Index Contour)  

- 7102 (Intermediate Contour)  

- 7103 (Index Depression Contour)  

- 7104 (Intermediate Depression Contour)  

- 7105 (Index Hidden Contour)  

- 7106 (Intermediate Hidden Contour)  

- 7107 (Index Hidden Depression Contour)  

- 7108 (Intermediate Hidden Depression Contour)

**Latest Imagery**

- 2023 Color (May) - 3 inch  
Image  

- Red: Band\_1  

- Green: Band\_2  

- Blue: Band\_3

**Default**

- Property Base Fill

