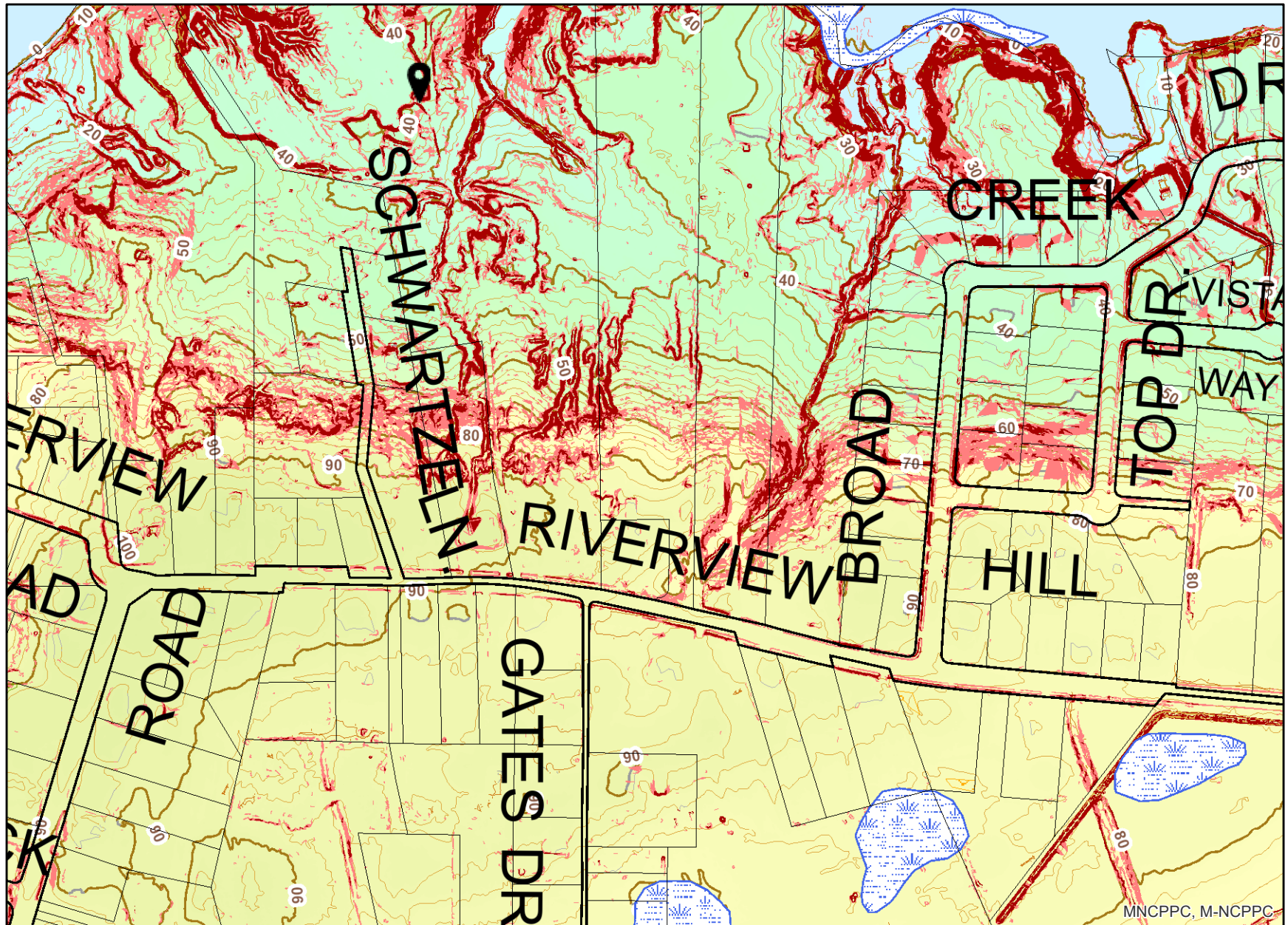


Riverview Road



Legend for Riverview Road

Property

Road Casings



Property



Environmental

Wetland of Special State Concern - Line (DNR)



Wetland of Special State Concern - Poly (DNR)



Wetland (DNR)



Woodland Conservation Area



Planted




Retained




Retained, Not Credited

Elevation


Slope (2021)




Slopes between 15% and 25%




Slopes greater than 25%




Contour - 2 Ft (2021)




7101 (Index Contour)




7102 (Intermediate Contour)



7103 (Index Depression Contour)



7104 (Intermediate Depression Contour)



7105 (Index Hidden Contour)

7106 (Intermediate Hidden Contour)

7107 (Index Hidden Depression Contour)

7108 (Intermediate Hidden Depression Contour)
Ground Control (2020)

Digital Elevation Model (2021)

High : 497

Low : -3
Shaded Relief (Grayscale) (2021)

High : 254

Low : 0
Shaded Relief (Color) (2021)

High : 497

Low : -3

Default

Property Base Fill