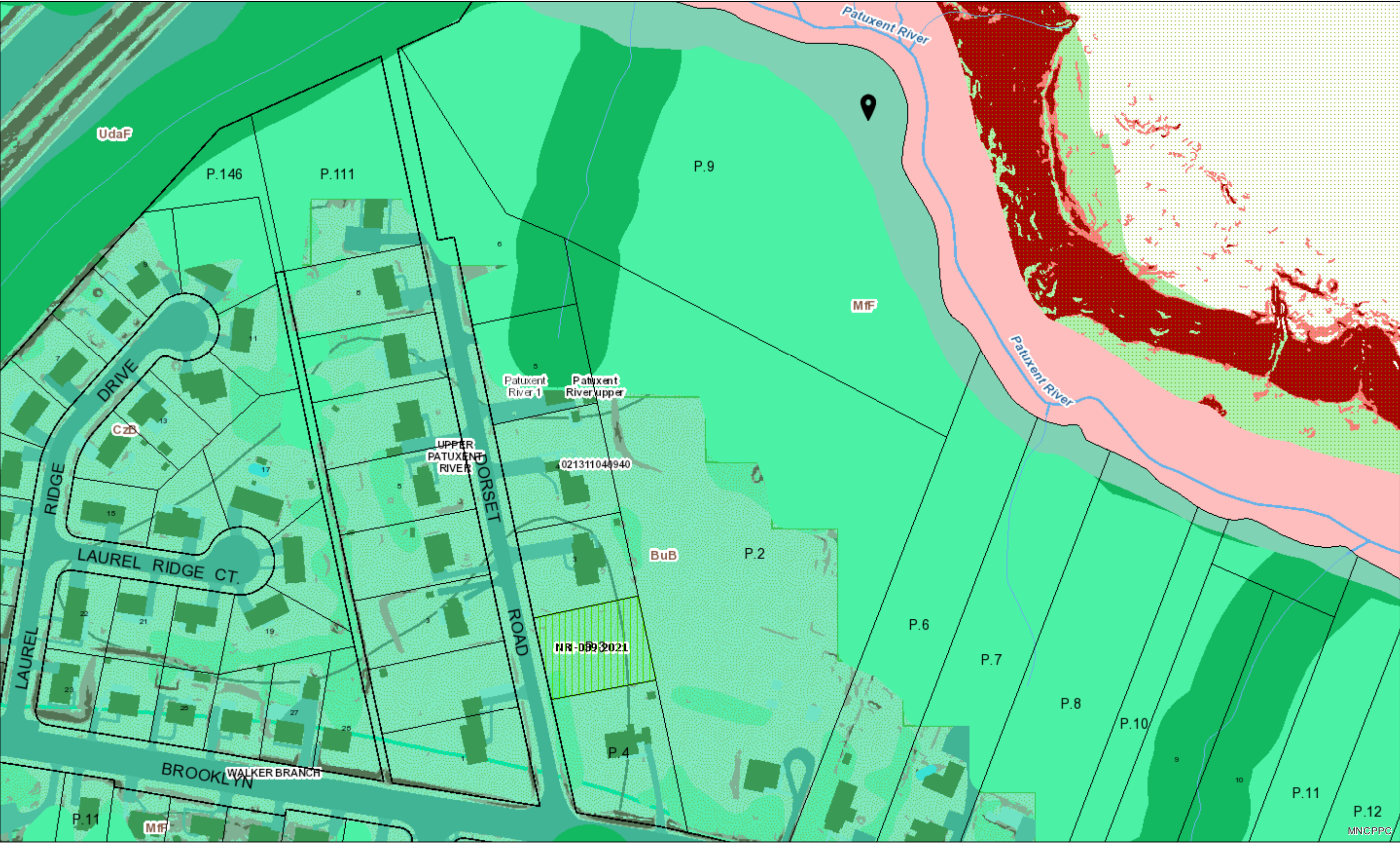


11x17 Landscape



Property

Road Casings

Property

Development Activities Prior

Final Plat

Detailed Site Plan

Specific Design Plan

Certificate Of Adequacy

Preliminary Plan

Final Development Plan

Pre-Preliminary Plan

Conceptual Site Plan

Comprehensive Design Plan

Comprehensive Sketch Plan

Conservation Sketch Plan

Zoning Map Amendment

Special Exception (Development Activity)

Departure from Design Standards

Departure from Parking and Loading Spaces

Departure from Sign Design Standards



Non-Conforming Fast Food



Non-Conforming Gas Stations



Mandatory Referral



Current Tree Conservation Plan 1 (In DAMS)



Current Tree Conservation Plan 2 (In DAMS)



Current Tree Conservation Plan Exempt (In DAMS)



Current Natural Resource Inventory (In DAMS)



Prior Tree Conservation Plan 1 (In DAMS)



Prior Tree Conservation Plan 2 (In DAMS)



Prior Tree Conservation Plan Exempt (In DAMS)



Prior Natural Resource Inventory (In DAMS)



Certification of Non-Conforming Use



Alternative Development Technique



Chesapeake Bay Conservation Plan



Vacation



Alternative Compliance



Revision Special Exception



Preliminary Alternative Compliance



- Secondary Amendment
- Primary Amendment
- Homeowners Minor Amendment
- Special Permit

Development Activities

- Final Plat
- Detailed Site Plan
- Certificate Of Adequacy
- Preliminary Plan
- Pre-Preliminary Plan
- Planned Development Plan
- Conservation Sketch Plan
- Zoning Map Amendment
- Special Exception (Development Activity)
- Departure from Design Standards
- Non-Conforming Use
- Mandatory Referral
- Current Tree Conservation Plan 1 (In DAMS)
- Current Tree Conservation Plan 2 (In DAMS)

Current Tree Conservation Plan Exempt (In DAMS)



Current Natural Resource Inventory (In DAMS)



Prior Tree Conservation Plan 1 (In DAMS)



Prior Tree Conservation Plan 2 (In DAMS)



Prior Tree Conservation Plan Exempt (In DAMS)



Prior Natural Resource Inventory (In DAMS)



Alternative Compliance



Conservation Plan - Chesapeake Bay Critical Area Rezoning



Chesapeake Bay Conservation Plan



Vacation



Preliminary Alternative Compliance



Secondary Amendment



Primary Amendment



Homeowners Minor Amendment



Environmental

Brownfield and Superfund Site (EPA)



BROWNFIELDS PROPERTY



SUPERFUND (NON-NPL)



SUPERFUND NPL

Stream Center and Drainage (2020)



Bulkhead



Dam



Drainage Connector



Floodwall



Headwall



Hidden Single Line Stream



Hidden Stream Poly Centerlines



Hidden Water Canal



Hidden Water Cooling Channel



Single Line Stream



Stream Poly Centerlines



Water Canal



Water Cooling Channel
Environmental Strategy Area



1



2



3



4 (I-D-O and L-D-O)



4 (R-C-O)
Floodplain - Consultant Study (DPIE)



Floodplain (DPIE)



Floodplain (FEMA - 2016)



1% Annual Chance Flood Hazard



Regulatory Floodway



Open Water



0.2% Annual Chance Flood Hazard



Area with Reduced Risk Due to Levee

Area of Minimal Flood Hazard
Green Infrastructure Plan (2017)



Regulated Area



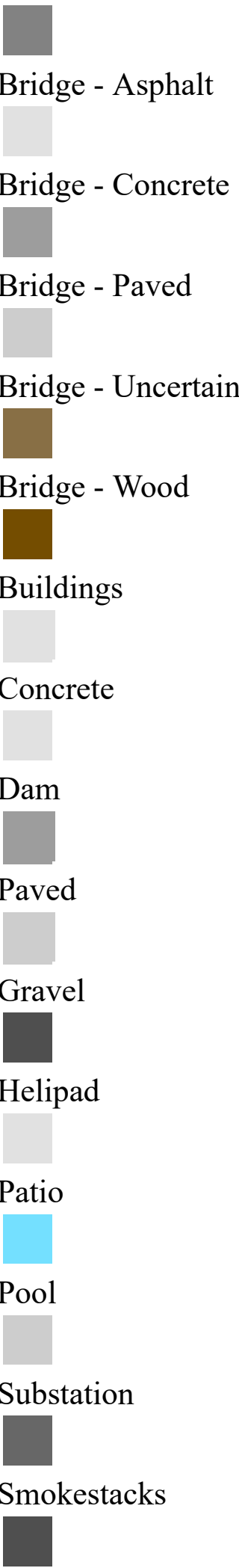
Evaluation Area
Impervious Surface (2020)



Asphalt



Athletic



Storage Tank



Track



Wood

Marlboro Clay



Evaluation_Zone



Present

Mount Vernon Viewshed Area of Primary Concern



Natural Resource Inventory



Potential Forested Interior Dwelling Specie (DNR)



Sensitive Species Review (DNR)



Stronghold Watershed (DNR)



1; 2

Slope (2021)



Slopes between 15% and 25%



Slopes greater than 25%

Soil (NRCS)



Tier II Catchment (MDE)



Tier II Stream Segment (MDE)



Tree Canopy (2020)



Tree Conservation Plan 1



Tree Conservation Plan 2



Tree Conservation Plan Exempt



Watershed (DOE)



Watershed - 12 digit (DNR)



Anacostia River



Mattawoman Creek



Oxon Creek



Patuxent River lower



Patuxent River middle



Patuxent River upper



Piscataway Creek



Potomac River M tidal



Potomac River U tidal



Rocky Gorge Dam



Western Branch



Zekiah Swamp

Wetland of Special State Concern - Line (DNR)

Wetland of Special State Concern - Poly (DNR)



Wetland (DNR)



Woodland Conservation Area



Planted



Retained



Retained, Not Credited

Default

Property Base Fill

