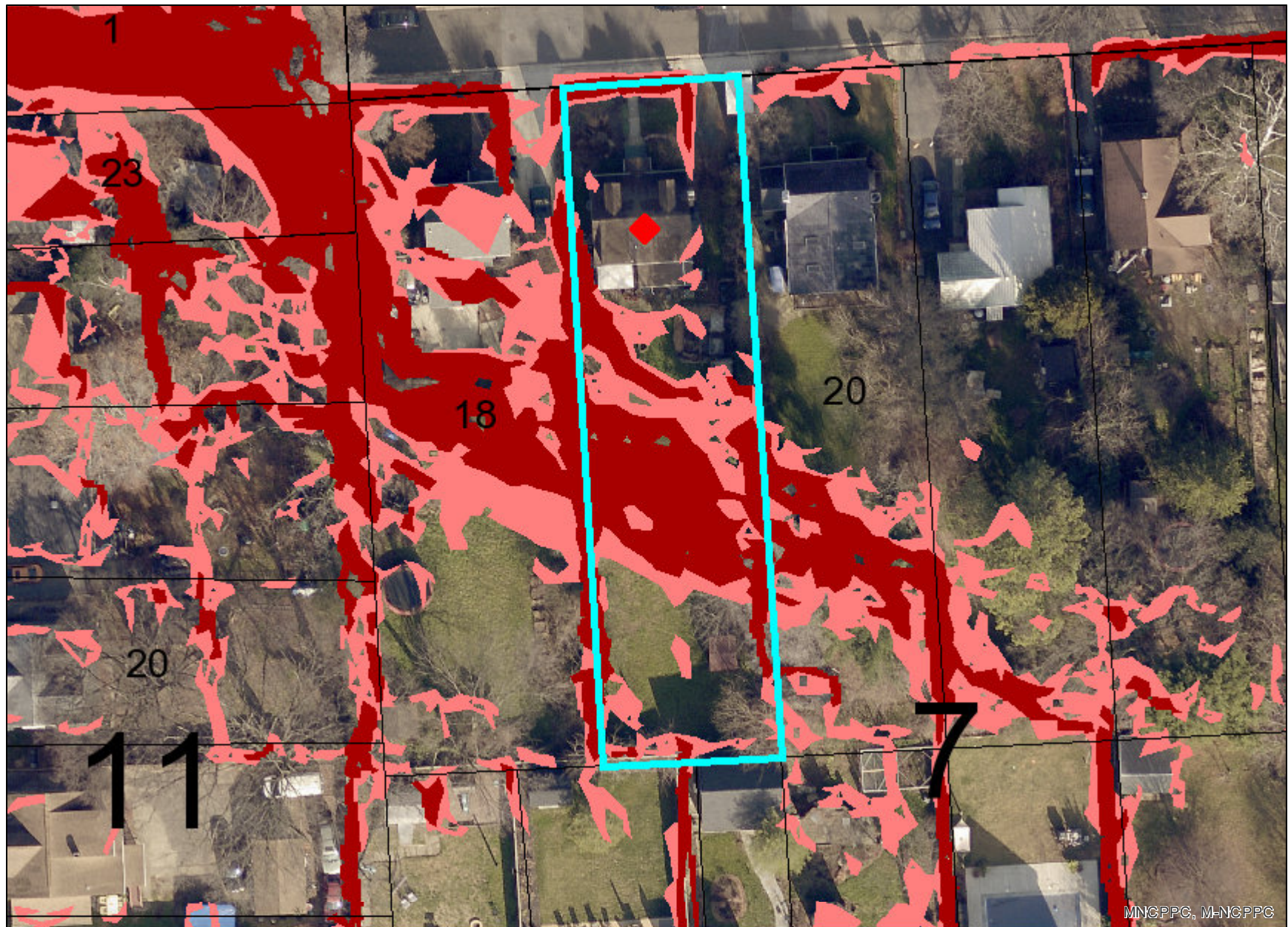


3405 Varnum St.



Legend for 3405 Varnum St.

Property

Road Casings



Property



Environmental

Slope (2021)



Slopes between 15% and 25%



Slopes greater than 25%

Easement

Environmental and Cultural (Platted)



Conservation



Floodplain



Landscape



Water Management

MALPF, HARPP and Rural Legacy



HARPP



MALPF



Rural Legacy

Miscellaneous (Platted)



Access












Construction



Lot Line



- Negative
 
- Signage
 
- Trail
 
- Utility
 
- Water Management
- Mount Vernon Scenic Easement Area
 
- Transportation and Circulation (Platted)
 
- Access
 
- Public Utility
 
- Trail
- MET Easement (DNR)
 

Supplemental Imagery

- 2021 Color (Feb) – 3 inch Image
 
- Red: Band_1
 
- Green: Band_2
 
- Blue: Band_3

Default

- Property Base Fill
 