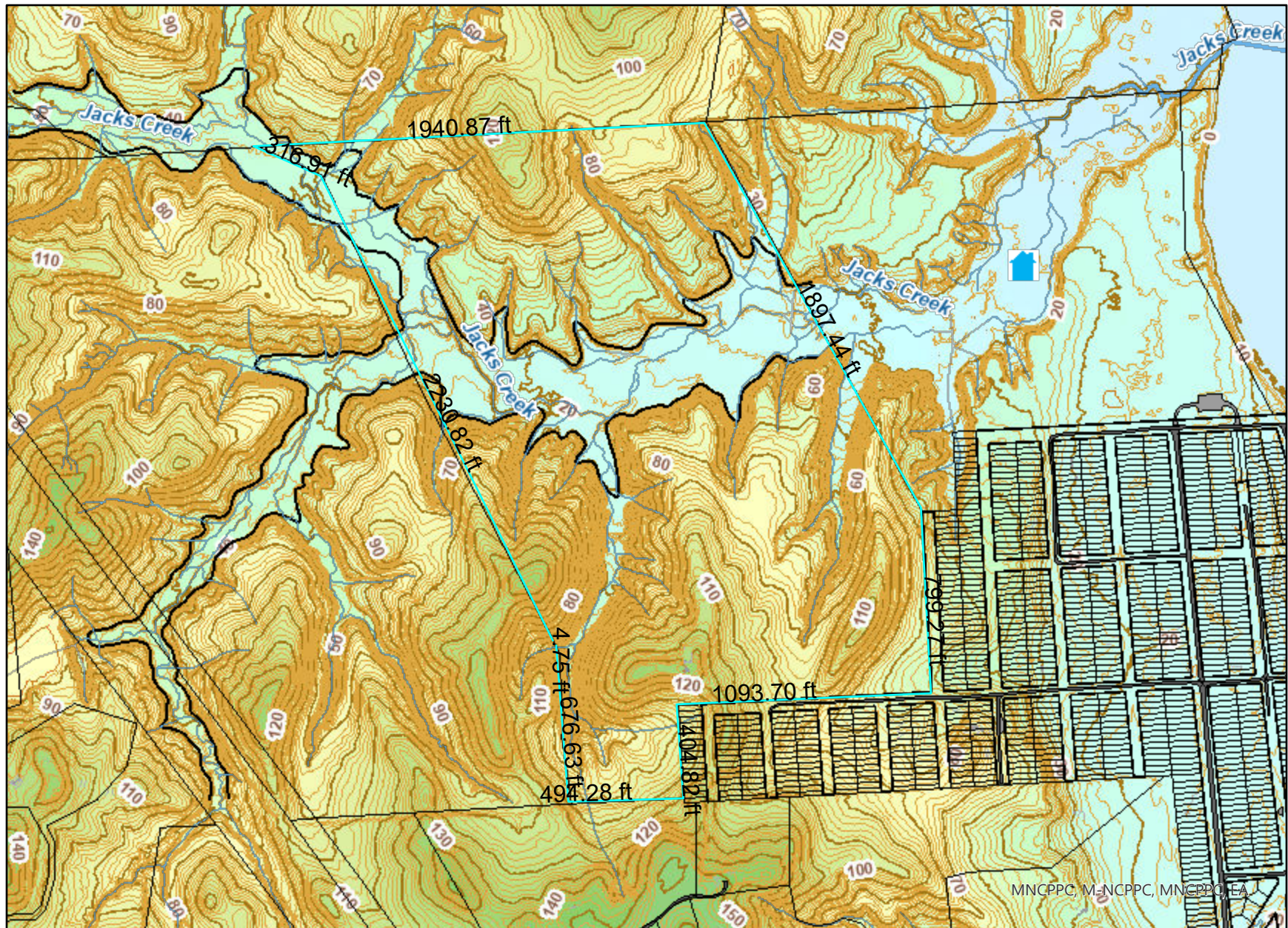


8.5X11_Landscape



Property

Road Casings



Property



Transportation

Pavement (2020)



Parking Lot



Road

Historic

Historic Sites and Resources (HAWP Required)



Historic Resources



Historic Site

Historic District PG County (HAWP Required)



Historic District National Register (HAWP Not Required)



Historic Sites Environmental Settings (HAWP Required)



Environmental

Stream Center and Drainage (2020)



Bulkhead



Dam



Drainage Connector



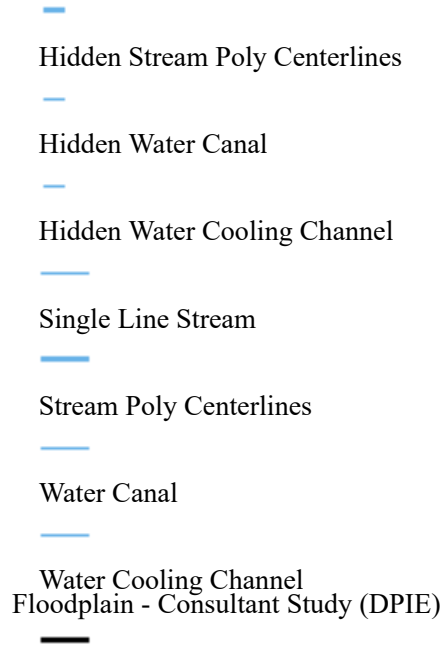
Floodwall



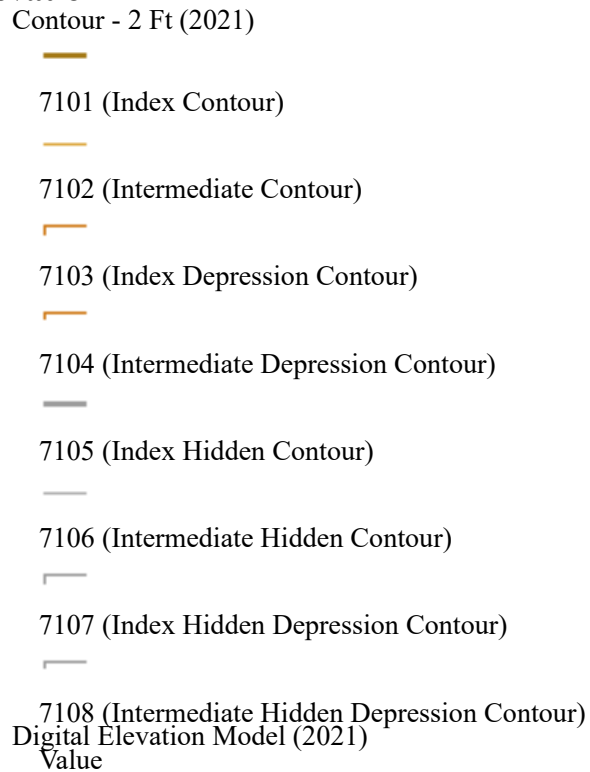
Headwall



Hidden Single Line Stream



Elevation





High : 497 - Low : -3

Easement

Environmental and Cultural (Platted)



Conservation



Floodplain



Landscape



Water Management

MALPF, HARPP and Rural Legacy



HARPP



MALPF



Rural Legacy

Miscellaneous (Platted)



Access



Construction



Lot Line



Negative



Signage



Trail



Utility



Water Management

- Mount Vernon Scenic Easement Area
- Transportation and Circulation (Platted)
- Access
- Public Utility
- Trail
- MET Easement (DNR)

Administrative

- Building (2020)
- Buildings
- Buildings Under Construction
- Overhead Rooftops/Canopies
- Parking Garage
- Ruins

Supplemental Imagery

- 2024 Color (Mar) - 3 inch Image
- RGB
- Red: Band_1
- Green: Band_2
- Blue: Band_3

Latest Imagery

- 2024 Color (Mar) - 3 inch Image
- RGB
- Red: Band_1



Green: Band_2



Blue: Band_3

Default

Property Base Fill

