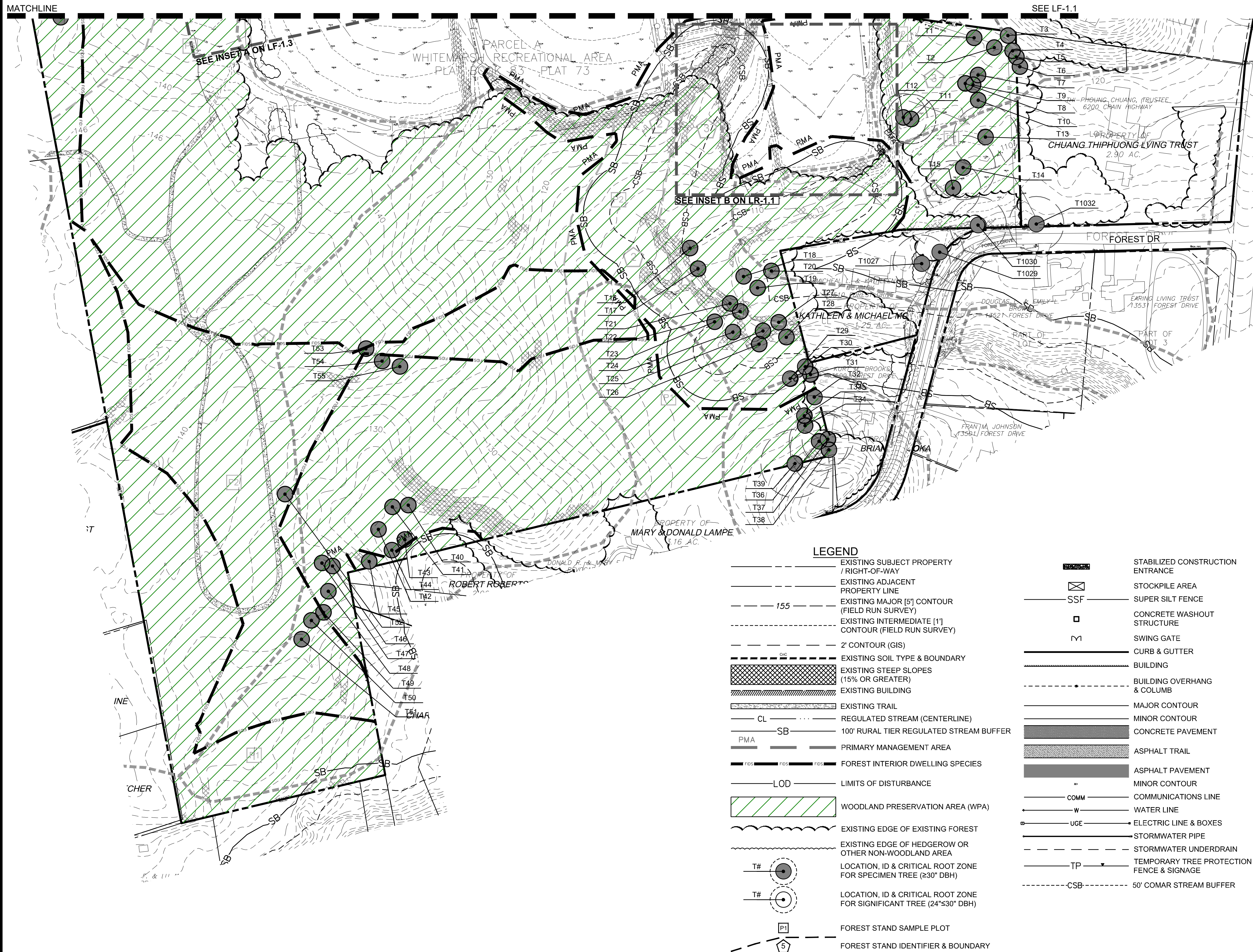


X:\ROCKV\11E15-0460 005 - WHITEMARSH PARK PHASE 3\05-CADD\100-15460 - PARK PROPERTY DWG 8/12/2022 5:34 PM ASTIRTON

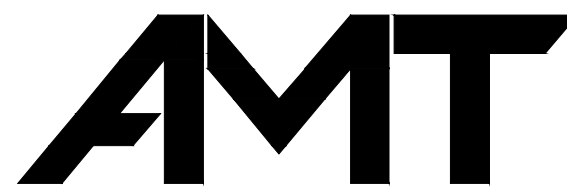
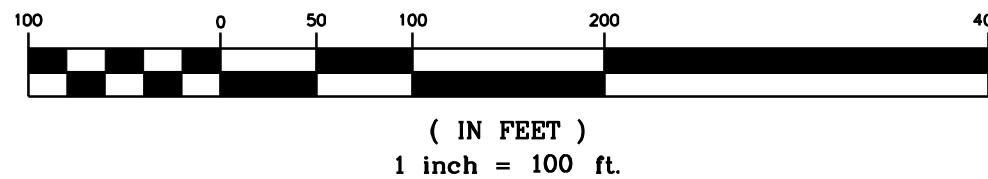
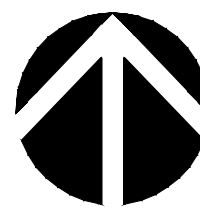
C:\ROCKVILLE\15-0460.005 - WHITEMARSH PARK PHASE 3\05-CAD\LF100-15460 - PARK PROPERTY.DWG, 8/12/2022 5:34 PM, ASTIRTON



MATCHLINE



Forest Conservation Act Reporting Information (Change Table)			
	Original Approval	Revision Number (-06)	Change Since Last Approval
Net Tract (Acres)	97.5	97.5	0
Existing Woodland (Acres)	75.84	75.84	0
Woodland Cleared (Acres)	0	0.43	0.43
Woodland Retained On-Site (Acres)	75.84	75.41	-0.43
Woodland Planted On-Site (Acres)		0.43	0.43
On-Site Woodland Easement/ Preservation and Planting (Acres)	0	0	0
On-Site Wooded Floodplain in Easement (Acres)	0	0	0
Bond Amount		\$5,619.24	\$5,619.24
Fee-In-Lieu Amount	0	0	0
50' Stream Buffers Conserved (Preservation) - Linear Length	0	4165	4165
50' Stream Buffers Conserved (Preservation) - Acreage	0	9.99	9.99
50' Stream Buffers Newly Established (Afforestation) - Linear Length	0	0	0
50' Stream Buffers Newly Established (Afforestation) - Acreage	0	0	0
Off-Site Woodland Conservation Credits Required (Acres)	0	0	0
Off-Site Woodland Conservation Credits Provided (Acres)	0	0	0



A. MORTON THOMAS AND ASSOCIATES, INC.
CONSULTING ENGINEERS
800 KING FARM BLVD, FOURTH FLOOR, ROCKVILLE, MD 20850
(301) 881-2545 FAX: (301) 881-0814
EMAIL: AMTI@AMTENGINEERING.COM

DATE	NO.	REVISIONS
------	-----	-----------

CITY OF BOWIE, MARYLAND

THIS PLAN HAS BEEN REVIEWED AND APPROVED FOR GENERAL CONFORMANCE WITH THE PROVISIONS OF THE CITY CODE. APPROVAL THEREOF DOES NOT RELIEVE THE DEVELOPER OF ANY OTHER REQUIRED PROVISIONS OF THE CODE OR STANDARDS.

CITY ENGINEER _____ DATE _____

PUBLIC WORKS DIRECTOR	DATE
-----------------------	------

OWNER / DEVELOPER: (INSERT NAME, ADDRESS, PHONE & CONTACT)

CITY OF BOWIE - DEPARTMENT OF PUBLIC WORKS
15901 FRED ROBINSON WAY, BOWIE, MD 20716
TEL : (301) 262-6200
FAX : (301) 809-2309

REGISTRATION STAMP



I HEREBY CERTIFY THAT THESE DOCUMENTS WERE PREPARED OR
APPROVED BY ME, AND THAT I AM A DULY LICENSED LANDSCAPE
ARCHITECT UNDER THE LAWS OF THE STATE OF MARYLAND.

LICENSE NO. 3956



PROJECT TITLE

**WHITEMARSH PARK
PHASE 3**

16500 WHITEMARSH PARK DRIVE
BOWIE, MD 20716

REVISIONS

MARK	DATE	DESCRIPTION

AMT FILE NO.	15-0460.001
--------------	-------------

DATE: 2-18-2022

SCALE: AS SHOWN

DESIGNED BY: AMT

DRAWN BY: _____

SHEET TITLE

TREE CONSERVATION PLAN

SHEET

LF-1.2

SHEETTCP2 SHEET OF3 OF 32

SPECIMEN, CHAMPION AND HISTORIC TREE TABLE						
NO.	COMMON NAME	SCIENTIFIC NAME	D.B.H (INCHES)	LOCATED ON SHEET NO.	CONDITION RATING	CONDITION COMMENTS
T1	Tulip poplar	<i>Liriodendron tulipifera</i>	40	LF-1.2	GOOD	Two leaders, poison ivy
T2	Tulip poplar	<i>Liriodendron tulipifera</i>	33	LF-1.2	AVG.	Major poison ivy, small canopy, dieback
T3	Tulip poplar	<i>Liriodendron tulipifera</i>	32	LF-1.2	AVG.	Poison ivy, small canopy, three leaders, included bark
T4	Tulip poplar	<i>Liriodendron tulipifera</i>	31	LF-1.2	POOR	Broken leader, small canopy, possible heartrot, poison ivy, old vines
T5	Tulip poplar	<i>Liriodendron tulipifera</i>	36.5	LF-1.2	GOOD	
T6	Tulip poplar	<i>Liriodendron tulipifera</i>	42	LF-1.2	GOOD	A little English ivy
T7	Red maple	<i>Acer rubrum</i>	33	LF-1.2	GOOD/AVG.	3 leaders, small canopy, included bark
T8	Tulip poplar	<i>Liriodendron tulipifera</i>	47.5	LF-1.2	GOOD	English ivy, some dead branches
T9	Tulip poplar	<i>Liriodendron tulipifera</i>	31.5	LF-1.2	POOR	English ivy, some dead branches
T10	Tulip poplar	<i>Liriodendron tulipifera</i>	47.5	LF-1.2	GOOD/AVG.	Some dead branches, some English ivy, poison ivy
T11	Northern red oak	<i>Quercus rubra</i>	31.5	LF-1.2	GOOD/AVG.	Vitis and English ivy in canopy
T12	Northern red oak	<i>Quercus rubra</i>	30.5	LF-1.2	AVG/POOR	Major poison ivy, English ivy in canopy
T13	Tulip poplar	<i>Liriodendron tulipifera</i>	45.5	LF-1.2	GOOD	
T14	Tulip poplar	<i>Liriodendron tulipifera</i>	41	LF-1.2	AVG.	Double trunk, poison ivy, included bark
T15	Tulip poplar	<i>Liriodendron tulipifera</i>	35	LF-1.2	AVG/POOR	Major dieback, English ivy, poison ivy
T16	Tulip poplar	<i>Liriodendron tulipifera</i>	52	LF-1.2	AVG.	Major English ivy, triple trunk
T17	Tulip poplar	<i>Liriodendron tulipifera</i>	31.5	LF-1.2	GOOD/AVG.	2 leaders, one canopy
T18	Tulip poplar	<i>Liriodendron tulipifera</i>	31	LF-1.2	GOOD/AVG.	Poison ivy, English ivy
T19	Tulip poplar	<i>Liriodendron tulipifera</i>	30	LF-1.2	GOOD/AVG.	Good/AVG.
T20	Tulip poplar	<i>Liriodendron tulipifera</i>	30	LF-1.2	POOR	Likely heartrot, major English ivy, major wound
T21	White oak	<i>Quercus alba</i>	35	LF-1.2	AVG.	Likely heartrot, leaning, cavity at base
T22	Tulip poplar	<i>Liriodendron tulipifera</i>	31	LF-1.2	POOR	Major heartrot, fall hazard, major wounds
T23	Tulip poplar	<i>Liriodendron tulipifera</i>	50	LF-1.2	AVG/POOR	Major heartrot, dieback
T24	Tulip poplar	<i>Liriodendron tulipifera</i>	41	LF-1.2	AVG.	Major vitis, dieback
T25	Tulip poplar	<i>Liriodendron tulipifera</i>	37.5	LF-1.2	GOOD/AVG.	Minor dieback
T26	Tulip poplar	<i>Liriodendron tulipifera</i>	40	LF-1.2	GOOD	Minor dieback
T27	Tulip poplar	<i>Liriodendron tulipifera</i>	31	LF-1.2	GOOD/AVG.	In channel, small canopy
T28	Tulip poplar	<i>Liriodendron tulipifera</i>	58.5	LF-1.2	GOOD/AVG.	Triple canopy, included bark, sap stains, vitis
T29	Tulip poplar	<i>Liriodendron tulipifera</i>	36.5	LF-1.2	AVG.	Double leader, English ivy, vitis
T30	Tulip poplar	<i>Liriodendron tulipifera</i>	33	LF-1.2	AVG.	Double leader, English ivy, sap stains
T31	Tulip poplar	<i>Liriodendron tulipifera</i>	35	LF-1.2	GOOD/AVG.	Minor dieback, major English ivy
T32	Tulip poplar	<i>Liriodendron tulipifera</i>	43	LF-1.2	GOOD/AVG.	Double trunk, major English ivy
T33	Tulip poplar	<i>Liriodendron tulipifera</i>	38	LF-1.2	GOOD/AVG.	Double trunk, wide crotch
T34	Tulip poplar	<i>Liriodendron tulipifera</i>	39	LF-1.2	GOOD	
T35					NOT USED	
T36	Tulip poplar	<i>Liriodendron tulipifera</i>	39	LF-1.2	GOOD	Dead branches
T37	Tulip poplar	<i>Liriodendron tulipifera</i>	33	LF-1.2	POOR	Major cavity, major dieback
T38	Tulip poplar	<i>Liriodendron tulipifera</i>	49	LF-1.2	AVG.	English ivy, triple leader in canopy
T39	Tulip poplar	<i>Liriodendron tulipifera</i>	43.5	LF-1.2	AVG.	Small canopy
T40	Tulip poplar	<i>Liriodendron tulipifera</i>	31	LF-1.2	GOOD/AVG.	Small canopy, some dieback, poison ivy
T41	Tulip poplar	<i>Liriodendron tulipifera</i>	31	LF-1.2	GOOD	
T42	Tulip poplar	<i>Liriodendron tulipifera</i>	32	LF-1.2	GOOD	
T43	Tulip poplar	<i>Liriodendron tulipifera</i>	30.5	LF-1.2	GOOD/AVG.	Slight lean
T44	Tulip poplar	<i>Liriodendron tulipifera</i>	46	LF-1.2	GOOD/AVG.	Double trunk, included bark
T45	Tulip poplar	<i>Liriodendron tulipifera</i>	41	LF-1.2	GOOD	Few dead branches in canopy
T46	Tulip poplar	<i>Liriodendron tulipifera</i>	35	LF-1.2	GOOD	
T47	Tulip poplar	<i>Liriodendron tulipifera</i>	32.5	LF-1.2	GOOD/AVG.	Minor dieback
T48	Tulip poplar	<i>Liriodendron tulipifera</i>	35.5	LF-1.2	GOOD	
T49	Tulip poplar	<i>Liriodendron tulipifera</i>	49	LF-1.2	GOOD/AVG.	Some dead branches
T50	Tulip poplar	<i>Liriodendron tulipifera</i>	34	LF-1.2	GOOD	
T51	Tulip poplar	<i>Liriodendron tulipifera</i>	39.5	LF-1.2	GOOD/AVG.	Some dead branches
T52	Tulip poplar	<i>Liriodendron tulipifera</i>	47.5	LF-1.2	GOOD	Double leaders, minor dieback, poison ivy
T53	Tulip poplar	<i>Liriodendron tulipifera</i>	42	LF-1.2	AVG.	Die back, dead branches, poison ivy
T54	Tulip poplar	<i>Liriodendron tulipifera</i>	39.5	LF-1.2	GOOD/AVG.	Minor dieback, adjacent maple roots girdling trunk
T55	Tulip poplar	<i>Liriodendron tulipifera</i>	45.5	LF-1.2	GOOD	Double leaders, dead branches, included bark
T56	Tulip poplar	<i>Liriodendron tulipifera</i>	37.5	LF-1.1	AVG.	Major English ivy, double leaders, included bark
T57	Tulip poplar	<i>Liriodendron tulipifera</i>	31.5	LF-1.1	AVG.	Major English ivy
T58	Tulip poplar	<i>Liriodendron tulipifera</i>	37	LF-1.1	AVG.	Major poison ivy, English ivy, small canopy
T59	Tulip poplar	<i>Liriodendron tulipifera</i>	34	LF-1.1	GOOD/AVG.	Minor poison ivy, thin canopy, double leaders
T60	Tulip poplar	<i>Liriodendron tulipifera</i>	31	LF-1.1	GOOD/AVG.	Small canopy
T61	Tulip poplar	<i>Liriodendron tulipifera</i>	35	LF-1.1	GOOD	Poison ivy on trunk
T62	Tulip poplar	<i>Liriodendron tulipifera</i>	30.5	LF-1.1	GOOD	Poison ivy on trunk
T63	Tulip poplar	<i>Liriodendron tulipifera</i>	31	LF-1.1	GOOD	
T64	Tulip poplar	<i>Liriodendron tulipifera</i>	30	LF-1.1	GOOD	
T65	Tulip poplar	<i>Liriodendron tulipifera</i>	32	LF-1.1	GOOD	Some broken branches in canopy
T66	Tulip poplar	<i>Liriodendron tulipifera</i>	34	LF-1.1	GOOD	Thin canopy
T67	Tulip poplar	<i>Liriodendron tulipifera</i>	30	LF-1.1	GOOD	Thin canopy
T68	Tulip poplar	<i>Liriodendron tulipifera</i>	36	LF-1.1	GOOD	English ivy on trunk
T69	Tulip poplar	<i>Liriodendron tulipifera</i>	33	LF-1.1	GOOD	
T70	Tulip poplar	<i>Liriodendron tulipifera</i>	31	LF-1.1	GOOD	
T71	Tulip poplar	<i>Liriodendron tulipifera</i>	31	LF-1.1	AVG.	Dieback
T72	Tulip poplar	<i>Liriodendron tulipifera</i>	33	LF-1.1	GOOD	
T73	Tulip poplar	<i>Liriodendron tulipifera</i>	32	LF-1.1	GOOD	
T74	Tulip poplar	<i>Liriodendron tulipifera</i>	37.5	LF-1.1	GOOD	
T75	Tulip poplar	<i>Liriodendron tulipifera</i>	42	LF-1.1	AVG.	Included bark, possible heartrot, major poison ivy, triple trunk
T76	Tulip poplar	<i>Liriodendron tulipifera</i>	38	LF-1.1	AVG.	Double trunk, multiple leaders, included bark, poison ivy
T77	Southern red oak	<i>Quercus falcata</i>	41	LF-1.1	AVG.	Major poison ivy, some dieback
T78	Tulip poplar	<i>Liriodendron tulipifera</i>	40.5	LF-1.1	GOOD/AVG.	Multiple leaders, one dead leader
T79	Tulip poplar	<i>Liriodendron tulipifera</i>	38	LF-1.1	GOOD/AVG.	Double trunk, poison ivy
T80	Tulip poplar	<i>Liriodendron tulipifera</i>	32.5	LF-1.1	AVG.	Epicormic growth, dead vines on trunk/canopy
T81	Tulip poplar	<i>Liriodendron tulipifera</i>	40.5	LF-1.1	AVG/POOR	Four leaders in canopy, major vines, broken leader
T82	Tulip poplar	<i>Liriodendron tulipifera</i>	30.5	LF-1.1	AVG.	Poison ivy, small canopy, broken limbs
T83	Tulip poplar	<i>Liriodendron tulipifera</i>	35.5	LF-1.1	GOOD/AVG.	English ivy, bamboo at base, minor dieback
T84	Tulip poplar	<i>Liriodendron tulipifera</i>	33	LF-1.1	AVG/POOR	Double trunk, heartrot, poison ivy, major cavity
T85	Tulip poplar	<i>Liriodendron tulipifera</i>	39	LF-1.1	AVG.	Triple trunk, broken trunk, possible heartrot, included bark
T86	Tulip poplar	<i>Liriodendron tulipifera</i>	34.5	LF-1.1	AVG/POOR	Major poison ivy
T87	Tulip poplar	<i>Liriodendron tulipifera</i>	31	LF-1.1	AVG.	Major poison ivy
T88	Tulip poplar	<i>Liriodendron tulipifera</i>	37	LF-1.1	AVG.	Major poison ivy
T89	Tulip poplar	<i>Liriodendron tulipifera</i>	34	LF-1.1	AVG/POOR	Major poison ivy, dieback
T90	Tulip poplar	<i>Liriodendron tulipifera</i>	34.5	LF-1.1	POOR	Major English ivy, poison ivy
T91	Tulip poplar	<i>Liriodendron tulipifera</i>	30	LF-1.1	POOR	Major English ivy
T92	Tulip poplar	<i>Liriodendron tulipifera</i>	31	LF-1.1	POOR	Major English ivy
T93	Tulip poplar	<i>Liriodendron tulipifera</i>	32	LF-1.1	POOR	Major English ivy, poison ivy, some dead branches
T94	Tulip poplar	<i>Liriodendron tulipifera</i>	38	LF-1.1	AVG/POOR	Major poison ivy
T95	Tulip poplar	<i>Liriodendron tulipifera</i>	37	LF-1.1	AVG/POOR	Major poison ivy
T96	Tulip poplar	<i>Liriodendron tulipifera</i>	35	LF-1.1	AVG.	Major poison ivy
T97	Tulip poplar	<i>Liriodendron tulipifera</i>	31	LF-1.1	POOR	Major poison ivy, broken branches
T98	Tulip poplar	<i>Liriodendron tulipifera</i>	37.5	LF-1.1	POOR	Major English ivy
T99	Sycamore	<i>Platanus occidentalis</i>	30.5	LF-1.1	AVG.	Compacted root zone (asphalt)
T100	Tulip poplar	<i>Liriodendron tulipifera</i>	36	LF-1.1	GOOD/AVG.	Major English ivy
T101	Tulip poplar	<i>Liriodendron tulipifera</i>	32	LF-1.1	AVG.	Poison ivy, English ivy
T102	Tulip poplar	<i>Liriodendron tulipifera</i>	34	LF-1.1	GOOD	
T103	Tulip poplar	<i>Liriodendron tulipifera</i>	35	LF-1.1	AVG/POOR	Epicormic growth, English ivy, poison ivy
T104	Tulip poplar	<i>Liriodendron tulipifera</i>	35	LF-1.1	AVG.	Thin canopy
T105	Tulip poplar	<i>Liriodendron tulipifera</i>	34	LF-1.1	GOOD/AVG.	Crowded
T106	Tulip poplar	<i>Liriodendron tulipifera</i>	32	LF-1.1	GOOD/AVG.	Crowded
T107	Tulip poplar	<i>Liriodendron tulipifera</i>	34	LF-1.1	AVG.	Major English ivy, thin canopy
T108	Tulip poplar	<i>Liriodendron tulipifera</i>	34	LF-1.1	GOOD/AVG.	Crowded
T109	Tulip poplar	<i>Liriodendron tulipifera</i>	34	LF-1.1	AVG/POOR	Major English ivy, crowded
T110	Tulip poplar	<i>Liriodendron tulipifera</i>	32.5	LF-1.1	AVG/POOR	Major English ivy, crowded

T111	Tulip poplar	<i>Liriodendron tulipifera</i>	30	LF-1.1	POOR	Major English ivy, double trunk, included bark
T112	Tulip poplar	<i>Liriodendron tulipifera</i>	35	LF-1.1	AVG.	Major English ivy
T113	Tulip poplar	<i>Liriodendron tulipifera</i>	31	LF-1.1	GOOD/AVG.	English ivy
T114	Tulip poplar	<i>Liriodendron tulipifera</i>	31	LF-1.1	GOOD/AVG.	English ivy
T115	Tulip poplar	<i>Liriodendron tulipifera</i>	55.5	LF-1.1	GOOD	Two leaders, poison ivy
T116	Tulip poplar	<i>Liriodendron tulipifera</i>	33	LF-1.1	GOOD/AVG.	English ivy
T117	Tulip poplar	<i>Liriodendron tulipifera</i>	31	LF-1.1	GOOD	
T118	Tulip poplar	<i>Liriodendron tulipifera</i>	30	LF-1.1	AVG.	Major English ivy
T119					NOT USED	
T120	Tulip poplar	<i>Liriodendron tulipifera</i>	32.5	LF-1.1	GOOD	
T121	Tulip poplar	<i>Liriodendron tulipifera</i>	30	LF-1.1	GOOD	
T122	Tulip poplar	<i>Liriodendron tulipifera</i>	32	LF-1.1	GOOD	
T123	Tulip poplar	<i>Liriodendron tulipifera</i>	31	LF-1.1	GOOD	
T124	Tulip poplar	<i>Liriodendron tulipifera</i>	34	LF-1.1	GOOD	
T125	Tulip poplar	<i>Liriodendron tulipifera</i>	31	LF-1.1	GOOD	
T126	Tulip poplar	<i>Liriodendron tulipifera</i>	36	LF-1.1	POOR	Triple trunk, major English ivy, included bark
T127	Tulip poplar	<i>Liriodendron tulipifera</i>	30.5	LF-1.1	AVG.	Minor English ivy, poor form, small canopy
T128	Tulip poplar	<i>Liriodendron tulipifera</i>	30.5	LF-1.1	GOOD/AVG.	Minor English ivy
T129	Northern red oak	<i>Quercus rubra</i>	33	LF-1.1	GOOD	
T130	Tulip poplar	<i>Liriodendron tulipifera</i>	42	LF-1.1	AVG.	On bank, wound at base
T131	Tulip poplar	<i>Liriodendron tulipifera</i>	32	LF-1.1	GOOD	
T132	White oak	<i>Quercus alba</i>	30.5	LF-1.1	AVG.	On bank, dieback
T133	Northern red oak	<i>Quercus rubra</i>	35	LF-1.1	GOOD	On bank, minor English ivy, minor dieback
T134	Tulip poplar	<i>Liriodendron tulipifera</i>	31	LF-1.1	GOOD	Minor English ivy
T135	Tulip poplar	<i>Liriodendron tulipifera</i>	38	LF-1.1	GOOD	
T136	American beech	<i>Fagus grandifolia</i>	30	LF-1.1	GOOD	Broken limbs in canopy, on bank
T137	Tulip poplar	<i>Liriodendron tulipifera</i>	31	LF-1.1	AVG.	English ivy, poor form
T138	Tulip poplar	<i>Liriodendron tulipifera</i>	31	LF-1.1	AVG.	Major English ivy
T139	Tulip poplar	<i>Liriodendron tulipifera</i>	41.5	LF-1.1	AVG.	Major English ivy, two leaders
T140	Tulip poplar	<i>Liriodendron tulipifera</i>	30	LF-1.1	AVG.	Double trunk (20", 22"), major English ivy, on bank
T141	Tulip poplar	<i>Liriodendron tulipifera</i>	39	LF-1.1	AVG.	Major English ivy, on bank
T142	Tulip poplar	<i>Liriodendron tulipifera</i>	32	LF-1.1	AVG.	Major Poison ivy, crowded
T143	Tulip poplar	<i>Liriodendron tulipifera</i>	50	LF-1.1	AVG.	Double trunk (35", 36"), major English ivy, included bark, wide crotch
T144	Tulip poplar	<i>Liriodendron tulipifera</i>	32	LF-1.1	AVG.	Major English ivy
T145	Tulip poplar	<i>Liriodendron tulipifera</i>	36	LF-1.1	AVG/POOR	Major English ivy
T146	Tulip poplar	<i>Liriodendron tulipifera</i>	42	LF-1.1	AVG.	Major English ivy
T147	Tulip poplar	<i>Liriodendron tulipifera</i>	35.5	LF-1.1	AVG.	Major English ivy
T148	Tulip poplar	<i>Liriodendron tulipifera</i>	37	LF-1.1	AVG.	Major English ivy
T149	Tulip poplar	<i>Liriodendron tulipifera</i>	38	LF-1.1	AVG/POOR	Crowded, major English ivy, fill on roots
T150	Tulip poplar	<i>Liriodendron tulipifera</i>	37	LF-1.1	AVG/POOR	Crowded, major English ivy, fill on roots
T151	Tulip poplar	<i>Liriodendron tulipifera</i>	31	LF-1.1	AVG/POOR	Crowded, major English ivy, fill on roots
T152	Tulip poplar	<i>Liriodendron tulipifera</i>	33	LF-1.1	AVG/POOR	Crowded, major English ivy, fill on roots
T153	Tulip poplar	<i>Liriodendron tulipifera</i>	34	LF-1.1	AVG/POOR	Crowded, major English ivy, fill on roots
T154	Tulip poplar	<i>Liriodendron tulipifera</i>	44.5	LF-1.1	POOR	Major English ivy, on bank, fill on roots
T155	Tulip poplar	<i>Liriodendron tulipifera</i>	42	LF-1.1	POOR	Major English ivy, wound at base, on bank
T156	Tulip poplar	<i>Liriodendron tulipifera</i>	36	LF-1.1	POOR	Major English ivy, broken limbs
T157	Tulip poplar	<i>Liriodendron tulipifera</i>	36	LF-1.1	POOR	Major English ivy
T158	Tulip poplar	<i>Liriodendron tulipifera</i>	34	LF-1.1	GOOD	
T159	Tulip poplar	<i>Liriodendron tulipifera</i>	40	LF-1.1	POOR	Major English ivy, epicormic growth, on bank
T160	Tulip poplar	<i>Liriodendron tulipifera</i>	45	LF-1.1	POOR	Major English ivy, on bank, broken leader
T161	Norway spruce	<i>Picea abies</i>	33.5	LF-1.1	POOR	Major English ivy, broken limbs
T162	Tulip poplar	<i>Liriodendron tulipifera</i>	39	LF-1.1	AVG/POOR	Major English ivy
T163	Tulip poplar	<i>Liriodendron tulipifera</i>	32	LF-1.1	AVG/POOR	Major English ivy, crack in trunk
T164	Tulip poplar	<i>Liriodendron tulipifera</i>	32	LF-1.1	AVG/POOR	Major English ivy
T165	Tulip poplar	<i>Liriodendron tulipifera</i>	33	LF-1.1	AVG/POOR	Major English ivy
T166	Tulip poplar	<i>Liriodendron tulipifera</i>	34	LF-1.1	AVG/POOR	Major English ivy
T167	Tulip poplar	<i>Liriodendron tulipifera</i>	36	LF-1.1	POOR	Major English ivy

X:\ROCKVILLE\15-0460.005 - WHITEMARSH PARK PHASE 3\05-CAD\LF-100-15460 - PARK PROPERTY.DWG, 8/12/2022 5:33 PM, ASTRTON

TREE PRESERVATION AND RETENTION NOTES:

- ALL WOODLANDS DESIGNATED ON THIS PLAN FOR PRESERVATION ARE THE RESPONSIBILITY OF THE PROPERTY OWNER. THE WOODLAND AREAS SHALL REMAIN IN A NATURAL STATE. THIS INCLUDES THE CANOPY TREES AND UNDERSTORY VEGETATION. A REVISED TREE CONSERVATION PLAN IS REQUIRED PRIOR TO CLEARING WOODLAND AREAS THAT ARE NOT SPECIFICALLY IDENTIFIED TO BE CLEARED ON THE APPROVED TCP2.
- TREE AND WOODLAND CONSERVATION METHODS SUCH AS ROOT PRUNING SHALL BE CONDUCTED AS NOTED ON THIS PLAN.
- THE LOCATION OF ALL TEMPORARY TREE PROTECTION FENCING (TPFs) SHOWN ON THIS PLAN SHALL BE FLAGGED OR STAKED IN THE FIELD PRIOR TO THE PRE-CONSTRUCTION MEETING. UPON APPROVAL OF THE LOCATIONS BY THE COUNTY INSPECTOR, INSTALLATION OF THE TPFs MAY BEGIN.
- ALL TEMPORARY TREE PROTECTION FENCING REQUIRED BY THIS PLAN SHALL BE INSTALLED PRIOR TO COMMENCEMENT OF CLEARING AND GRADING OF THE SITE AND SHALL REMAIN IN PLACE UNTIL THE BOND IS RELEASED FOR THIS PROJECT. FAILURE TO INSTALL AND MAINTAIN TEMPORARY OR PERMANENT TREE PROTECTIVE DEVICES IS A VIOLATION OF THIS TCP2.
- WOODLAND PRESERVATION AREAS SHALL BE POSTED WITH SIGNAGE AS SHOWN ON THE PLANS AT THE SAME TIME AS THE TEMPORARY TPF INSTALLATION. THESE SIGNS MUST REMAIN IN PERPETUITY.

REMOVAL OF HAZARDOUS TREES OR LIMBS BY DEVELOPERS OR BUILDERS:

- THE DEVELOPER AND/OR BUILDER IS RESPONSIBLE FOR THE COMPLETE PRESERVATION OF ALL FORESTED AREAS SHOWN ON THE APPROVED PLAN TO REMAIN UNDISTURBED. ONLY TREES OR PARTS THEREOF DESIGNATED BY THE COUNTY AS DEAD, DYING, OR HAZARDOUS MAY BE REMOVED.
- A TREE IS CONSIDERED HAZARDOUS IF A CONDITION IS PRESENT WHICH LEADS A CERTIFIED ARBORIST OR LICENSED TREE EXPERT TO BELIEVE THAT THE TREE OR A PORTION OF THE TREE HAS A POTENTIAL TO FALL AND STRIKE A STRUCTURE, PARKING AREA, OR OTHER HIGH USE AREA AND RESULT IN PERSONAL INJURY OR PROPERTY DAMAGE.
- DURING THE INITIAL STAGES OF CLEARING AND GRADING, IF HAZARDOUS TREES ARE PRESENT, OR TREES ARE PRESENT THAT ARE NOT HAZARDOUS BUT ARE LEANING INTO THE DISTURBED AREA, THE PERMITEE SHALL REMOVE SAID TREES USING A CHAINSAW. CORRECTIVE MEASURES REQUIRING THE REMOVAL OF THE HAZARDOUS TREE OR PORTIONS THEREOF SHALL REQUIRE AUTHORIZATION BY THE COUNTY INSPECTOR. ONLY AFTER APPROVAL BY THE INSPECTOR MAY THE TREE BE CUT BY CHAINSAW TO NEAR THE EXISTING GROUND LEVEL. THE STUMP SHALL NOT BE REMOVED OR COVERED WITH SOIL, MULCH OR OTHER MATERIALS THAT WOULD INHIBIT SPROUTING.
- IF A TREE OR TREES BECOME HAZARDOUS PRIOR TO BOND RELEASE FOR THE PROJECT, DUE TO STORM EVENTS OR OTHER SITUATIONS NOT RESULTING FROM AN ACTION BY THE PERMITEE, PRIOR TO REMOVAL, A CERTIFIED ARBORIST OR A LICENSED TREE EXPERT MUST CERTIFY THAT THE TREE OR PORTION OF THE TREE IN QUESTION HAS A POTENTIAL TO FALL AND STRIKE A STRUCTURE, PARKING AREA, OR OTHER HIGH USE AREA AND MAY RESULT IN PERSONAL INJURY OR PROPERTY DAMAGE. IF A TREE OR PORTIONS THEREOF ARE IN IMMINENT DANGER OF STRIKING A STRUCTURE, PARKING AREA, OR OTHER HIGH USE AREA AND MAY RESULT IN PERSONAL INJURY OR PROPERTY DAMAGE THEN THE CERTIFICATION IS NOT REQUIRED AND THE PERMITEE SHALL TAKE CORRECTIVE ACTION IMMEDIATELY. THE CONDITION OF THE AREA SHALL BE FULLY DOCUMENTED THROUGH PHOTOGRAPHS PRIOR TO CORRECTIVE ACTION BEING TAKEN. THE PHOTOS SHALL BE SUBMITTED TO THE INSPECTOR FOR DOCUMENTATION OF THE DAMAGE.

IF CORRECTIVE PRUNING MAY ALLEVIATE A HAZARDOUS CONDITION, THE CERTIFIED ARBORIST OR LICENSED TREE EXPERT MAY PROCEED WITHOUT FURTHER AUTHORIZATION. THE PRUNING MUST BE DONE IN ACCORDANCE WITH THE LATEST EDITION OF THE APPROPRIATE ANSI A-300 PRUNING STANDARDS. THE CONDITION OF THE AREA SHALL BE FULLY DOCUMENTED THROUGH PHOTOGRAPHS PRIOR TO CORRECTIVE ACTION BEING TAKEN. THE PHOTOS SHALL BE SUBMITTED TO THE INSPECTOR FOR DOCUMENTATION OF THE DAMAGE.

DEBRIS FROM THE TREE REMOVAL OR PRUNING THAT OCCURS WITHIN 35 FEET OF THE WOODLAND EDGE MAY BE REMOVED AND PROPERLY DISPOSED OF BY RECYCLING, CHIPPING OR OTHER ACCEPTABLE METHODS. ALL DEBRIS THAT IS MORE THAN 35 FEET FROM THE WOODLAND EDGE SHALL BE CUT UP TO ALLOW CONTACT WITH THE GROUND, THUS ENCOURAGING DECOMPOSITION. THE SMALLER MATERIALS SHALL BE PLACED INTO BRUSH PILES THAT WILL SERVE AS WILDLIFE HABITAT.

TREE WORK TO BE COMPLETED WITHIN A ROAD RIGHT-OF-WAY REQUIRES A PERMIT FROM THE MARYLAND DEPARTMENT OF NATURAL RESOURCES UNLESS THE TREE REMOVAL IS SHOWN WITHIN APPROVED LIMITS OF DISTURBANCE ON A TCP2. THE WORK IS REQUIRED TO BE CONDUCTED BY A LICENSED TREE EXPERT.

WORK ON THIS PROJECT WILL BE INITIATED IN SEVERAL PHASES. ALL TEMPORARY TPFs REQUIRED FOR A GIVEN PHASE SHALL BE INSTALLED PRIOR TO ANY DISTURBANCE WITHIN THAT PHASE OF WORK.

AFFORESTATION AND REFORESTATION NOTES:

- ALL AFFORESTATION AND REFORESTATION BONDS, BASED ON SQUARE FOOTAGE, SHALL BE POSTED WITH THE COUNTY PRIOR TO THE ISSUANCE OF ANY PERMITS. THESE BONDS WILL BE RETAINED AS SURETY UNTIL ALL REQUIRED ACTIVITIES HAVE BEEN SATISFIED OR THE REQUIRED TIMEFRAME FOR MAINTENANCE HAS PASSED, WHICHEVER IS LONGER.
- THE PLANTING OF AFFORESTATION OR REFORESTATION AREAS SHALL BE COMPLETED PRIOR TO ISSUANCE OF THE FIRST BUILDING PERMIT. SEEDLING PLANTING IS TO OCCUR FROM MARCH THROUGH NOVEMBER ONLY. NO PLANTING SHALL BE DONE WHILE GROUND IS FROZEN. PLANTING OF LARGER CALIPER STOCK OR CONTAINERIZED STOCK MAY BE DONE AT ANY TIME PROVIDED A DETAILED MAINTENANCE SCHEDULE IS PROVIDED.
- IF PLANTING CANNOT OCCUR DUE TO PLANTING CONDITIONS, THE DEVELOPER OR PROPERTY OWNER SHALL INSTALL THE FENCING AND SIGNAGE IN ACCORDANCE WITH THE APPROVED TYPE 2 TREE CONSERVATION PLAN. PLANTING SHALL THEN BE ACCOMPLISHED DURING THE NEXT PLANTING SEASON. IF PLANTING IS DELAYED BEYOND THE TRANSFER OF THE PROPERTY TITLE TO THE HOMEOWNER, THE DEVELOPER OR BUILDER SHALL OBTAIN A SIGNED STATEMENT FROM THE PURCHASER INDICATING THAT THEY UNDERSTAND THAT THE REFORESTATION AREA IS LOCATED ON THEIR PROPERTY AND THAT REFORESTATION WILL OCCUR DURING THE NEXT PLANTING SEASON. A COPY OF THAT DOCUMENT SHALL BE PRESENTED TO THE GRADING INSPECTOR AND THE COUNTY.
- REFORESTATION AREAS SHALL NOT BE MOWED; HOWEVER, THE MANAGEMENT OF COMPETING VEGETATION AROUND INDIVIDUAL TREES AND REMOVAL OF NOXIOUS, INVASIVE, AND NON-NATIVE VEGETATION WITHIN THE REFORESTATION AREAS IS ACCEPTABLE.
- ALL REQUIRED TEMPORARY TREE PROTECTION FENCING SHALL BE INSTALLED PRIOR TO THE CLEARING AND GRADING OF THE SITE AND SHALL REMAIN IN PLACE UNTIL THE PERMANENT TREE PROTECTION FENCING IS INSTALLED WITH THE REQUIRED PLANTING. THE TEMPORARY FENCING IS NOT REQUIRED TO BE INSTALLED IF THE PERMANENT FENCING IS INSTALLED PRIOR TO CLEARING AND GRADING OF THE SITE. FAILURE TO INSTALL AND MAINTAIN TEMPORARY OR PERMANENT TREE PROTECTIVE FENCING IS A VIOLATION OF THIS TCP2.
- AFFORESTATION / REFORESTATION AREAS SHALL BE POSTED WITH NOTIFICATION SIGNAGE, AS SHOWN ON THE PLANS, AT THE SAME TIME AS THE PERMANENT PROTECTION FENCING INSTALLATION. THESE SIGNS SHALL REMAIN IN PERPETUITY.
- THE COUNTY INSPECTOR SHALL BE NOTIFIED PRIOR TO SOIL PREPARATION OR INITIATION OF ANY TREE PLANTING ON THIS SITE.
- AT THE TIME OF ISSUANCE OF THE FIRST PERMIT, THE FOLLOWING INFORMATION SHALL BE SUBMITTED TO THE M-NCPPC PLANNING DEPARTMENT REGARDING THE CONTRACTOR RESPONSIBLE FOR IMPLEMENTATION OF THIS PLAN: CONTRACTOR NAME; BUSINESS NAME (IF DIFFERENT); ADDRESS; AND PHONE NUMBER.
- RESULTS OF ANNUAL SURVIVAL CHECKS FOR EACH OF THE REQUIRED FOUR YEARS AFTER TREE PLANTING SHALL BE REPORTED TO THE M-NCPPC, PLANNING DEPARTMENT.
- FAILURE TO ESTABLISH THE AFFORESTATION OR REFORESTATION WITHIN THE PRESCRIBED TIME FRAME WILL RESULT IN FORFEITURE OF THE REFORESTATION BOND AND/OR A VIOLATION OF THIS PLAN INCLUDING THE ASSOCIATED \$9.00 PER SQUARE FOOT PENALTY UNLESS THE COUNTY INSPECTOR APPROVES A WRITTEN EXTENSION.

PLANTING SPECIFICATION NOTES:

- QUANTITY: (SEE PLANT SCHEDULE)
- TYPE: (SEE PLANT SCHEDULE)
- PLANT QUALITY STANDARDS: THE PLANTS SELECTED SHALL BE HEALTHY AND STURDY REPRESENTATIVES OF THEIR SPECIES. SEEDLINGS SHALL HAVE A MINIMUM TOP GROWTH OF 18", THE DIAMETER OF THE ROOT COLLAR (THE PART OF THE ROOT JUST BELOW GROUND) SHALL BE AT LEAST 3/8". THE ROOTS SHALL BE WELL DEVELOPED AND AT LEAST 8" LONG. NO MORE THAN TWENTY-FIVE PERCENT (25%) OF THE ROOT SYSTEM (BOTH PRIMARY AND AUXILIARY / FIBROUS ROOTS) SHALL BE PRESENT.

PLANTS THAT DO NOT HAVE AN ABUNDANCE OF WELL DEVELOPED TERMINAL BUDS ON THE LEADERS AND BRANCHES SHALL BE REJECTED.

PLANTS SHALL BE SHIPPED BY THE NURSERY IMMEDIATELY AFTER LIFTING FROM THE FIELD OR REMOVAL FROM THE GREENHOUSE, AND PLANTED IMMEDIATELY UPON RECEIPT BY THE LANDSCAPE CONTRACTOR.

IF THE PLANTS CANNOT BE PLANTED IMMEDIATELY AFTER DELIVERY TO THE REFORESTATION SITE, THEY SHALL BE STORED IN THE SHADE WITH THEIR ROOT MASSES PROTECTED FROM DIRECT EXPOSURE TO SUN AND WIND BY THE USE OF STRAW, PEAT MOSS, COMPOST, OR OTHER SUITABLE MATERIAL AND SHALL BE MAINTAINED THROUGH PERIODIC WATERING, UNTIL THE TIME OF PLANTING.

- PLANT HANDLING: THE QUANTITY OF THE SEEDLINGS TAKEN TO THE FIELD SHALL NOT EXCEED THE QUANTITY THAT CAN BE PLANTED IN A DAY. SEEDLINGS, ONCE REMOVED FROM THE NURSERY OR TEMPORARY STORAGE AREA SHALL BE PLANTED IMMEDIATELY.
- TIMING OF PLANTING: THE BEST TIME TO PLANT SEEDLINGS IS WHILE THEY ARE DORMANT, PRIOR TO SPRING BUDDING. THE MOST SUITABLE MONTHS FOR PLANTING ARE MARCH AND APRIL, WHEN SOIL IS MOIST, BUT MAY BE PLANTED FROM MARCH THROUGH NOVEMBER. NO PLANTING SHALL BE DONE WHILE THE GROUND IS FROZEN. PLANTING SHALL OCCUR WITHIN ONE GROWING SEASON OF THE ISSUANCE OF GRADING / BUILDING PERMITS AND/OR REACHING THE FINAL GRADES AND STABILIZATION OF PLANTING AREAS.
- SEEDLING PLANTING: TREE SEEDLINGS SHALL BE HAND PLANTED USING A DIBBLE BAR OR SHARP-SHOOTER SHOVEL. IT IS IMPORTANT THAT THE SEEDLINGS BE PLACED IN THE HOLE SO THAT THE ROOTS CAN SPREAD OUT NATURALLY; THEY SHOULD NOT BE TWISTED, BALLED UP OR BENT. MOIST SOIL SHOULD THEN BE PACKED FIRMLY AROUND THE ROOTS. SEEDLINGS SHOULD BE PLANTED AT A DEPTH WHERE THEIR ROOTS LIE JUST BELOW THE GROUND SURFACE. AIR POCKETS SHOULD NOT BE LEFT AFTER CLOSING THE HOLE WHICH WOULD ALLOW THE ROOTS TO DRY OUT. SEE PLANTING DETAILS FOR FURTHER EXPLANATION. IF THE CONTRACTOR WISHES TO PLANT BY ANOTHER METHOD, THE PREPARER OF THIS TREE CONSERVATION PLAN MUST BE CONTACTED AND GIVE HIS APPROVAL BEFORE PLANTING MAY BEGIN.
- SPACING: SEE PLANT SCHEDULE AND/OR PLANTING PLAN FOR SPACING REQUIREMENTS. ALSO REFER TO THE PLANTING LAYOUT DETAIL FOR A DESCRIPTION OF THE GENERAL PLANTING THEORY.
- SOIL: UPON THE COMPLETION OF ALL GRADING OPERATIONS, A SOIL TEST SHALL BE CONDUCTED TO DETERMINE WHAT SOIL PREPARATION AND SOIL AMENDMENTS, IF ANY, ARE NECESSARY TO CREATE GOOD TREE GROWING CONDITIONS. SOIL SAMPLES SHALL BE TAKEN AT A RATE THAT PROVIDES ONE SOIL SAMPLE FOR EACH AREA THAT APPEARS TO HAVE A DIFFERENT SOIL TYPE (IF THE ENTIRE AREA APPEARS UNIFORM, THEN ONLY ONE SAMPLE IS NECESSARY), AND SUBMITTED FOR TESTING TO A PRIVATE COMPANY. THE COMPANY OF CHOICE SHALL MAKE RECOMMENDATIONS FOR IMPROVING THE EXISTING SOIL. THE SOIL WILL BE TESTED AND RECOMMENDED FOR CORRECTIONS OF SOIL TEXTURE, pH, MAGNESIUM, PHOSPHORUS, POTASSIUM, CALCIUM AND ORGANIC MATTER.
- SOIL IMPROVEMENT MEASURES: THE SOIL SHALL THEN BE IMPROVED ACCORDING TO THE RECOMMENDATIONS MADE BY THE TESTING COMPANY.
- FENCING AND SIGNAGE: FINAL PROTECTIVE FENCING SHALL BE PLACED ON THE VISIBLE AND/OR DEVELOPMENT SIDE OF PLANTING AREAS. THE FINAL PROTECTIVE FENCE SHALL BE INSTALLED UPON COMPLETION OF PLANTING OPERATIONS UNLESS IT WAS INSTALLED DURING THE INITIAL STAGES OF DEVELOPMENT. SIGNS SHALL BE POSTED PER THE SIGNAGE DETAIL ON THIS SHEET.
- PLANTING METHOD: CONSULT THE PLANTING DETAIL(S) SHOWN ON THIS PLAN
- MULCHING: APPLY TWO-INCH THICK LAYER OF WOODCHIPS OR SHREDDED HARDWOOD MULCH (AS NOTED) TO EACH PLANTING SITE (SEE DETAIL SHOWN ON THIS PLAN).
- GROUND COVER ESTABLISHMENT: THE REMAINING DISTURBED AREA BETWEEN SEEDLINGS PLANTING SITES SHALL BE SEEDED AND STABILIZED WITH WHITE CLOVER SEED AT THE RATE OF 5 LBS/ACRE.
- MOWING: NO MOWING SHALL BE ALLOWED IN ANY PLANTING AREA.
- SURVIVAL CHECK FOR BOND RELEASE: THE SEEDLING PLANTING IS TO BE CHECKED AT THE END OF EACH YEAR FOR FOUR YEARS TO ASSURE THAT NO LESS THAN 75% OF THE ORIGINAL PLANTED QUANTITY SURVIVES. IF THE MINIMUM NUMBER HAS NOT BEEN PROVIDED THE AREA MUST BE SUPPLEMENTED WITH ADDITIONAL SEEDLINGS TO REACH THE REQUIRED NUMBER AT TIME OF PLANTING.
- SOURCE OF SEEDLINGS: TBD. PLANTING STOCK SEED SOURCE SHALL BE FROM WITHIN THE GEOGRAPHIC REGION SUITED FOR GROWTH IN PRINCE GEORGE'S COUNTY, MARYLAND.
- CONTRACTOR SHALL REMOVE AND PROPERLY DISPOSE OF SOIL CONTAMINATED WITH OIL PRODUCTS, SOLUBLE SALTS, FERROUS IRON, SOLUBLE ALUMINUM, SOLUBLE MANGANESE, OR HERBICIDE.

FOUR-YEAR MANAGEMENT PLAN FOR RE/AFFORESTATION AREAS:

FIELD CHECK THE RE/AFFORESTATION AREA ACCORDING TO THE FOLLOWING SCHEDULE:

YEAR 1: -SITE PREPARATION AND TREE PLANTING
 -SURVIVAL CHECK ONCE ANNUALLY (SEPTEMBER - NOVEMBER) (SEE NOTE 1)
 -WATERING IS NEEDED (2X / MONTH)
 -CONTROL OF UNDESIRABLE VEGETATION AS NEEDED (1X IN JUNE AND 1X IN SEPTEMBER MIN.)

YEAR 2-3: -REINFORCEMENT PLANTING IF NEEDED (SEE NOTE 2)
 -SURVIVAL CHECK ONCE ANNUALLY (SEPTEMBER-NOVEMBER)
 -CONTROL OF UNDESIRABLE VEGETATION IF NEEDED (1X IN MAY AND 1X IN AUGUST MIN.)

YEAR 4: -REINFORCEMENT PLANTING IF NEEDED (SEE NOTE 2)
 -SURVIVAL CHECK (SEPTEMBER - NOVEMBER)

NOTES: 1. SURVIVAL CHECK: CHECK PLANTED STOCK AGAINST PLANT LIST (OR AS-BUILT) BY WALKING THE SITE AND TAKING INVENTORY. PLANTS MUST SHOW VITALITY. SUBMIT FIELD DATA FORMS (CONDITION CHECK SHEETS) TO OWNER AFTER EACH INSPECTION. REMOVE ALL DEAD PLANTS.
 2. REINFORCEMENT PLANTING: REPLACE DEAD OR MISSING PLANTS IN SUFFICIENT QUANTITY TO BRING THE TOTAL NUMBER OF LIVE PLANTS TO AT LEAST 75% OF THE NUMBER ORIGINALLY PLANTED. IF A PARTICULAR SPECIES SUFFERS UNUSUALLY HIGH MORTALITY, REPLACE WITH AN ALTERNATIVE PLANT TYPE.
 3. MISCELLANEOUS: FERTILIZATION OR WATERING DURING YEARS 1 THROUGH 3 WILL BE DONE ON AN AS NEEDED BASIS. SPECIAL RETURN OPERATIONS OR RECOMMENDATIONS WILL BE CONSIDERED ON AN AS NEEDED BASIS.
 4. INVASIVE PLANT REMOVAL SHALL BE COMPLETED PRIOR TO _____ AND CONFORM TO THE RECOMMENDATIONS OF THE INVASIVE PLANT REMOVAL PLAN SHOWN ON THE PLAN PREPARED BY _____ DATED _____.
 5. THE REMOVAL OF NOXIOUS, INVASIVE, AND NON-NATIVES PLANT SPECIES SHALL BE DONE WITH THE USE OF HAND-HELD EQUIPMENT ONLY SUCH AS PRUNERS OR A CHAIN SAW. THESE PLANTS MAY BE CUT NEAR THE GROUND AND THE MATERIAL LESS THAN TWO INCHES DIAMETER MAY BE REMOVED FROM THE AREA AND DISPOSED OF APPROPRIATELY. ALL MATERIAL FROM THESE NOXIOUS, INVASIVE, AND NON-NATIVE PLANTS GREATER THAN TWO (2) INCHES DIAMETER SHALL BE CUT TO ALLOW CONTACT WITH THE GROUND, THUS ENCOURAGING DECOMPOSITION.
 6. THE USE OF BROADCAST SPRAYING OF HERBICIDES IS NOT PERMITTED. HOWEVER, THE USE OF HERBICIDES TO DISCOURAGE RE-SPROUTING OF INVASIVE, NOXIOUS, OR NON-NATIVE PLANTS IS PERMITTED IF DONE AS AN APPLICATION OF THE CHEMICAL DIRECTLY TO THE CUT STUMP IMMEDIATELY FOLLOWING CUTTING OF PLANT TOPS. THE USE OF ANY HERBICIDE SHALL BE DONE IN ACCORDANCE WITH THE LABEL INSTRUCTIONS AND BE APPLIED BY A CERTIFIED PESTICIDE APPLICATOR.

POST DEVELOPMENT NOTES:

- IF THE DEVELOPER OR BUILDER NO LONGER HAS AN INTEREST IN THE PROPERTY AND THE NEW OWNER DESIRES TO REMOVE A HAZARDOUS TREE OR PORTION THEREOF, THE NEW OWNER SHALL OBTAIN A WRITTEN STATEMENT FROM A CERTIFIED ARBORIST OR LICENSED TREE EXPERT IDENTIFYING THE HAZARDOUS CONDITION AND THE PROPOSED CORRECTIVE MEASURES PRIOR TO HAVING THE WORK CONDUCTED. AFTER PROPER DOCUMENTATION HAS BEEN COMPLETED PER THE HANDOUT "GUIDANCE FOR PRINCE GEORGE'S COUNTY PROPERTY OWNERS, PRESERVATION OF WOODLAND CONSERVATION AREAS", THE ARBORIST OR TREE EXPERT MAY THEN REMOVE THE TREE. THE STUMP SHALL BE CUT AS CLOSE TO THE GROUND AS POSSIBLE AND LEFT IN PLACE. THE REMOVAL OR GRINDING OF THE STUMPS IN WOODLAND CONSERVATION AREAS IS NOT PERMITTED.

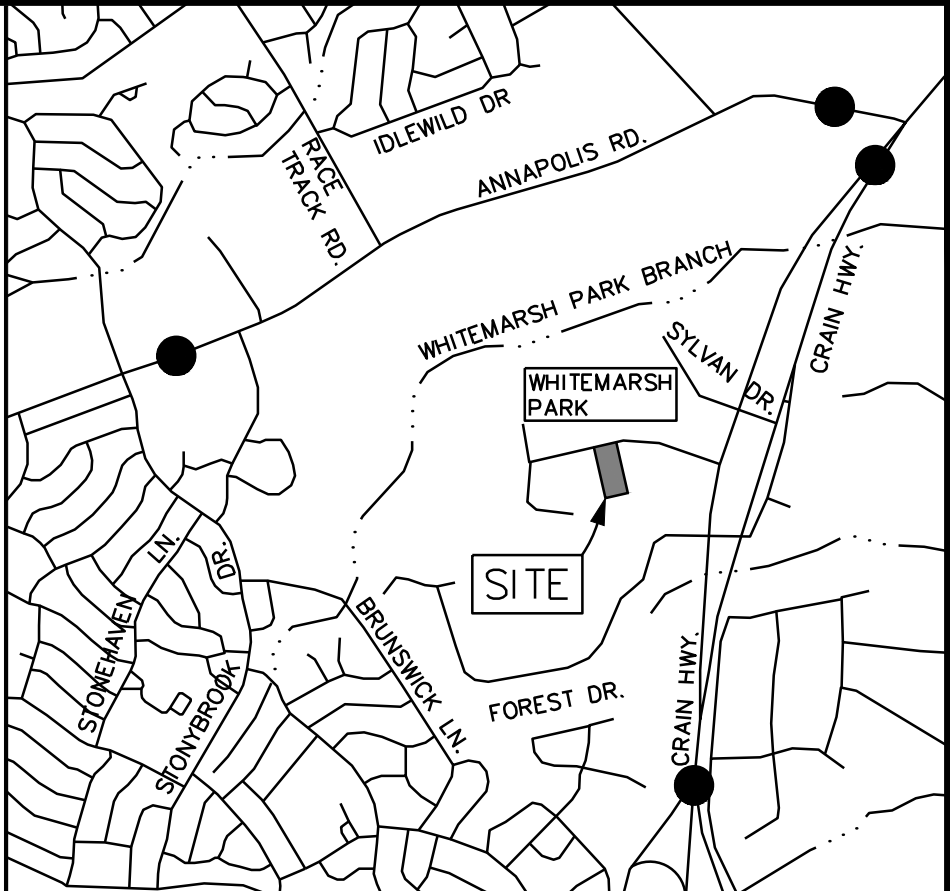
IF A TREE OR PORTIONS THEREOF ARE IN IMMINENT DANGER OF STRIKING A STRUCTURE, PARKING AREA, OR OTHER HIGH USE AREA AND MAY RESULT IN PERSONAL INJURY OR PROPERTY DAMAGE THEN THE CERTIFICATION IS NOT REQUIRED AND THE PERMITEE SHALL TAKE CORRECTIVE ACTION IMMEDIATELY. THE CONDITION OF THE AREA SHALL BE FULLY DOCUMENTS THROUGH PHOTOGRAPHS PRIOR TO CORRECTIVE ACTION BEING TAKEN. THE PHOTOS SHALL BE SUBMITTED TO THE INSPECTOR FOR DOCUMENTATION OF THE DAMAGE.

TREE WORK TO BE COMPLETED WITHIN A ROAD RIGHT-OF-WAY REQUIRES A PERMIT FROM THE MARYLAND DEPARTMENT OF NATURAL RESOURCES UNLESS THE TREE REMOVAL IS SHOWN WITHIN THE APPROVED LIMITS OF DISTURBANCE ON A TCP2. THE WORK IS REQUIRED TO BE CONDUCTED BY A LICENSED TREE EXPERT.

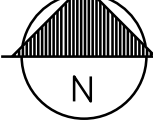
- THE REMOVAL OF NOXIOUS, INVASIVE, AND NON-NATIVE PLANT SPECIES FROM ANY WOODLAND PRESERVATION AREA SHALL BE DONE WITH THE USE OF HAND-HELD EQUIPMENT ONLY (PRUNERS OR A CHAINSAW). THESE PLANTS MAY BE CUT NEAR THE GROUND AND MATERIAL LESS THAN TWO INCHES DIAMETER MAY BE REMOVED FROM THE AREA AND DISPOSED OF APPROPRIATELY. ALL MATERIAL FROM THESE NOXIOUS, INVASIVE, AND NON-NATIVE PLANTS GREATER THAN TWO (2) INCHES DIAMETER SHALL BE CUT TO ALLOW CONTACT WITH THE GROUND, THUS ENCOURAGING DECOMPOSITION.
- THE USE OF BROADCAST SPRAYING OF HERBICIDES IS NOT PERMITTED. HOWEVER, THE USE OF HERBICIDES TO DISCOURAGE RE-SPROUTING OF INVASIVE, NOXIOUS, OR NON-NATIVE PLANTS IS PERMITTED IF DONE AS AN APPLICATION OF THE CHEMICAL DIRECTLY TO THE CUT STUMP IMMEDIATELY FOLLOWING CUTTING OF PLANT TOPS. THE USE OF HERBICIDE SHALL BE DONE IN ACCORDANCE WITH THE LABEL INSTRUCTIONS.
- THE USE OF CHAINSAWS IS EXTREMELY DANGEROUS AND SHOULD NOT BE CONDUCTED WITH POORLY MAINTAINED EQUIPMENT, WITHOUT SAFETY EQUIPMENT, OR BY INDIVIDUALS NOT TRAINED IN THE USE OF THIS EQUIPMENT FOR THE PRUNING AND/OR CUTTING OF TREES.

REFORESTATION/AFFORESTATION PLANTING GENERAL NOTES:

- CALL MISS UTILITY AT 811 OR 1-800-257-7777 TO MARK UTILITIES AT LEAST 48 HOURS BEFORE DIGGING.
- ALL MATERIALS AND PLANTING PROCEDURES EXCEPT AS OTHERWISE NOTED SHALL CONFORM TO THE LATEST EDITION OF "LANDSCAPE SPECIFICATION GUIDELINES" BY THE LANDSCAPE CONTRACTORS ASSOCIATION MD,DC,VA.
- PLANTS SHALL CONFORM TO THE CURRENT EDITION OF THE AMERICAN STANDARD FOR NURSERY STOCK (ANSI Z60.1).
- PLANT NAMES SHALL BE THOSE GIVEN IN THE LATEST EDITION OF STANDARD PLANT NAMES, AMERICAN COMMITTEE ON HORTICULTURAL NOMENCLATURE.
- TOPSOIL SHALL MEET SPECIFICATIONS AS PER THE 1994 MD STANDARDS AND SPECIFICATIONS FOR SOIL AND EROSION AND SEDIMENT CONTROL.
- THE CONTRACTOR SHALL STAKE OUT ALL PLANTING BEDS AND TREE LOCATIONS AND THESE MUST BE APPROVED BY THE LANDSCAPE ARCHITECT BEFORE DIGGING. IT IS THE CONTRACTOR'S RESPONSIBILITY TO LOCATE AND COORDINATE PLANTINGS WITH ALL EXISTING UTILITIES. IF DISCREPANCIES OCCUR BECAUSE OF UTILITY LOCATIONS OR OTHER EXISTING CONDITIONS THE CONTRACTOR SHALL NOTIFY THE LANDSCAPE ARCHITECT IMMEDIATELY TO COORDINATE ANY NECESSARY ADJUSTMENTS.
- ALL PLANT MATERIAL SHALL BE LABELED BY THE NURSERY AND DELIVERED WITH LABELS IN PLACE FOR INSPECTION. SUBSTITUTIONS IN PLANT SPECIES OR SIZE WILL NOT BE PERMITTED EXCEPT WITH THE APPROVAL OF THE LANDSCAPE ARCHITECT. PRUNING IS NOT TO OCCUR UNTIL MATERIAL HAS BEEN PLANTED. CONTRACTOR SHALL PRUNE PLANT MATERIAL AS SOON THEREAFTER AS IS ADVISABLE UNDER STANDARD HORTICULTURAL PRACTICES.
- IT IS OF UTMOST IMPORTANCE THAT ALL PLANT MATERIAL BE SET SLIGHTLY HIGHER IN RELATION TO GRADE THAN IT WAS GROWN IN THE NURSERY AND WITH GOOD EARTH TO ROOT CONTACT. ANY MATERIALS OR WORK MAY BE REJECTED BY THE LANDSCAPE ARCHITECT IF IT DOES NOT MEET THIS OR ANY OTHER REQUIREMENT OF THE SPECIFICATIONS, AND REJECTED MATERIALS SHALL BE REMOVED FROM THE SITE BY THE CONTRACTOR AT CONTRACTOR'S EXPENSE.
- THE CONTRACTOR SHALL MULCH AND WATER ALL PLANTS WELL ON THE DAY THEY ARE PLANTED. THE SURFACE MULCH LAYER SHALL CONSIST OF STANDARD FINE SHREDDED AGED HARDWOOD MULCH. THE CONTRACTOR SHALL APPLY THE MULCH UNIFORMLY TO A 2 TO 3 INCH DEPTH. BARK SHALL BE KEPT 3 TO 4 INCHES AWAY FROM ALL TRUNKS AND WOODY STEMS.
- IN CASE OF DISCREPANCIES BETWEEN QUANTITIES ON THE PLANT LIST AND THE PLAN, THE PLAN SHALL GOVERN.
- ANY PLANTING WITHIN A FOREST RETENTION AREA, AS DESIGNATED ON THE FOREST CONSERVATION PLAN AND SHOWN ON THIS PLAN, MUST BE DONE TO AVOID ANY ADVERSE IMPACT TO THE ROOTS OF EXISTING TREES. THE CONTRACTORS PERFORMING WORK ON THE SITE ARE RESPONSIBLE FOR PROTECTING EXISTING NATIVE AND NON-INVASIVE PLANTINGS DURING CONSTRUCTION.
- REFORESTATION/AFFORESTATION STOCKING RATE SHALL BE 300 - 1" CAL. TREES/AC AND 100 - 3 GAL. SHRUBS/AC.
- SURVIVAL RATE OF REFORESTATION/AFFORESTATION PLANTING SHALL BE 85% AT THE END OF THE SECOND GROWING SEASON



VICINITY MAP
SCALE: 1" = 2000'
ADC MAP PRINCE GEORGE'S COUNTY
2006 ED., PAGES 10 & 15, PAGE, 38, GRID: D4
VSSC GRID: 208N14
WATERSHED: PATUXENT RIVER UPPER (02131104)



MISS UTILITY

48 HOURS BEFORE YOU DIG
CALL "MISS UTILITY" AT 811
OR LOG ON TO www.missutility.net

CALL "MISS UTILITY AT 1-800-257-7777, 48 HOURS PRIOR TO THE START OF WORK. THE EXCAVATOR MUST NOTIFY ALL PUBLIC UTILITY COMPANIES WITH UNDERGROUND FACILITIES IN THE AREA OF PROPOSED EXCAVATION AND HAVE THOSE FACILITIES LOCATED BY THE UTILITY COMPANIES PRIOR TO COMMENCING EXCAVATION. THE EXCAVATOR IS RESPONSIBLE FOR COMPLIANCE WITH REQUIREMENTS OF THE PRINCE GEORGE'S COUNTY CODE.

THIS PLAN IS FOR TREE PROTECTION/
FOREST CONSERVATION PLAN PURPOSES ONLY

PHASE 3


PROPERTY OWNERS AWARENESS CERTIFICATE

I/WE, CITY OF BOWIE, HEREBY ACKNOWLEDGE THAT WE ARE AWARE OF THIS TYPE 2 TREE CONSERVATION PLAN (TCP2) AND THAT WE UNDERSTAND THE REQUIREMENTS AS SET FORTH IN THIS TCP2.


 03/21/2022
OWNER OR OWNERS REPRESENTATIVE DATE

QUALIFIED PROFESSIONAL CERTIFICATION

THIS COMPLIES WITH THE CURRENT REQUIREMENTS OF PRINCE GEORGE'S COUNTY CODE AND THE ENVIRONMENTAL TECHNICAL MANUAL.

SIGNED:  DATED: 08/12/2022

ANDREA STIRTON - MD RLA #3956
A. MORTON THOMAS & ASSOCIATES, INC. PH: 301-881-2545
800 KING FARM BLVD, FOURTH FLOOR EMAIL: astirton@amtengineering.com
ROCKVILLE, MD 20850

Prince George's County Planning Department, M-NCPPC Environmental Planning Section TYPE 2 TREE CONSERVATION PLAN APPROVAL TCP2 - 040 - 91 - 06				
	APPROVED BY	DATE	DRD #	REASON FOR REVISION
00	JLS	3/8/1991		N/A (ORIGINAL)
01	KF	4/17/2006		DISTURBED 0.25AC (10,864SF) OF WOODLAND
02	KF	11/17/2007		DISTURBED 0 AC OF WOODLAND
03	KF	2/14/2008		
04	Chuck Schneider	12/27/2017		SEWER LINE
05	Chuck Schneider	3/26/2018		PLAZA CONSTRUCTION
06		8/24/22		



A. MORTON THOMAS AND ASSOCIATES, INC.
CONSULTING ENGINEERS
800 KING FARM BLVD, FOURTH FLOOR, ROCKVILLE, MD 20850
(301) 881-2545 FAX: (301) 881-8014
EMAIL: AMT@AMTENGINEERING.COM

DATE NO. REVISIONS

CITY OF BOWIE, MARYLAND

THIS PLAN HAS BEEN REVIEWED AND APPROVED FOR GENERAL CONFORMANCE WITH THE PROVISIONS OF THE CITY CODE. APPROVAL THEREOF DOES NOT RELIEVE THE DEVELOPER OF ANY OTHER REQUIRED PROVISIONS OF THE CODE OR STANDARDS.

CITY ENGINEER

DATE

PUBLIC WORKS DIRECTOR

DATE

OWNER / DEVELOPER: (INSERT NAME, ADDRESS, PHONE & CONTACT)
CITY OF BOWIE - DEPARTMENT OF PUBLIC WORKS
15901 FRED ROBINSON WAY, BOWIE, MD 20716
TEL : (301) 262-6200
FAX : (301) 809-2309

REGISTRATION STAMP



I, HEREBY CERTIFY THAT THESE DOCUMENTS WERE PREPARED OR APPROVED BY ME, AND THAT I AM A FULLY LICENSED LANDSCAPE ARCHITECT UNDER THE LAWS OF THE STATE OF MARYLAND.

LICENSE NO.: 3956 EXPIRATION DATE: 03/15/2023

OWNER



PROJECT TITLE

**WHITEMARSH PARK
PHASE 3**

16500 WHITEMARSH PARK DRIVE
BOWIE, MD 20716

REVISIONS

MARK	DATE	DESCRIPTION

AMT FILE NO. 15-0460.001

DATE: 2-18-2022

SCALE: AS SHOWN

DESIGNED BY: AMT

DRAWN BY:

CHECKED BY:

SHEET TITLE

**TREE
CONSERVATION
PLAN**

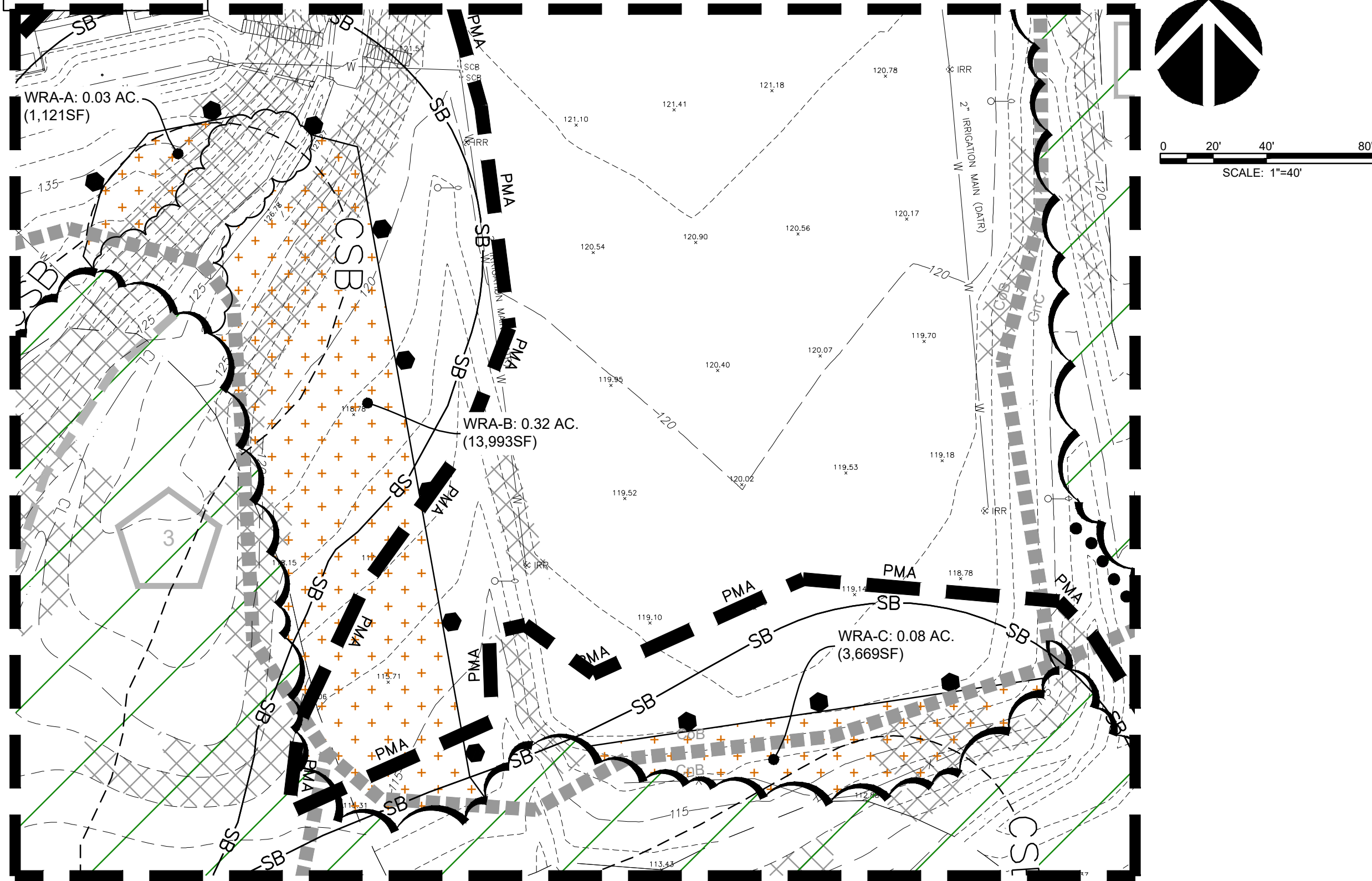
SHEET

LF-1.5

TCP2 SHEET 6 OF 7

X:\ROCKVILLE\15-0460.005 - WHITEMARSH PARK PHASE 3\05-CAD\LR\100-15460 - PARK PROPERTY.DWG, 8/15/2022 11:42 AM, ASTIRTON

INSET B



SIGNS MAY ALSO BE ATTACHED TO PERMANENT SPLIT RAIL TREE PROTECTION FENCING WITH 3 GALVANIZED WOOD SCREWS EACH WITH A GALVANIZED WASHER

3" GALV. RING THREAD NAILS, TYP. 3 PLACES

4"x4" PRESSURE TREATED POST.

MIN. DEPTH 18"

WOODLAND CONSERVATION AREA
REFORESTATION PROJECT
DISTURBANCE TO SEEDLINGS, SHRUBS, OR TREES IS PROHIBITED
TREES FOR YOUR FUTURE

- NOTES:
- ATTACHMENT OF SIGNS TO TREES IS PROHIBITED.
 - SIGNS SHOULD BE PROPERLY MAINTAINED.
 - AVOID INJURY TO ROOTS WHEN PLACING POSTS FOR THE SIGNS.
 - SIGNS SHOULD BE POSTED TO BE VISIBLE TO ALL CONSTRUCTION PERSONNEL FROM ALL DIRECTIONS.
 - SIGNS SHOULD BE INSTALLED AT SAME TIME AS TREE PROTECTION DEVICE.
 - LOCATE SIGNS APPROXIMATELY EVERY 50 FEET ALONG FENCE OR AS SHOWN ON PLAN.
 - SIGNS SHOULD BE IN PLACE IMMEDIATELY FOLLOWING STAKE OUT OF L.O.D., AND REMAIN IN PLACE IN PERPETUITY.
 - SIGNS MAY ALSO BE ATTACHED TO PERMANENT SPLIT RAIL TREE PROTECTION FENCING.

1 REFORESTATION AREA SIGNAGE

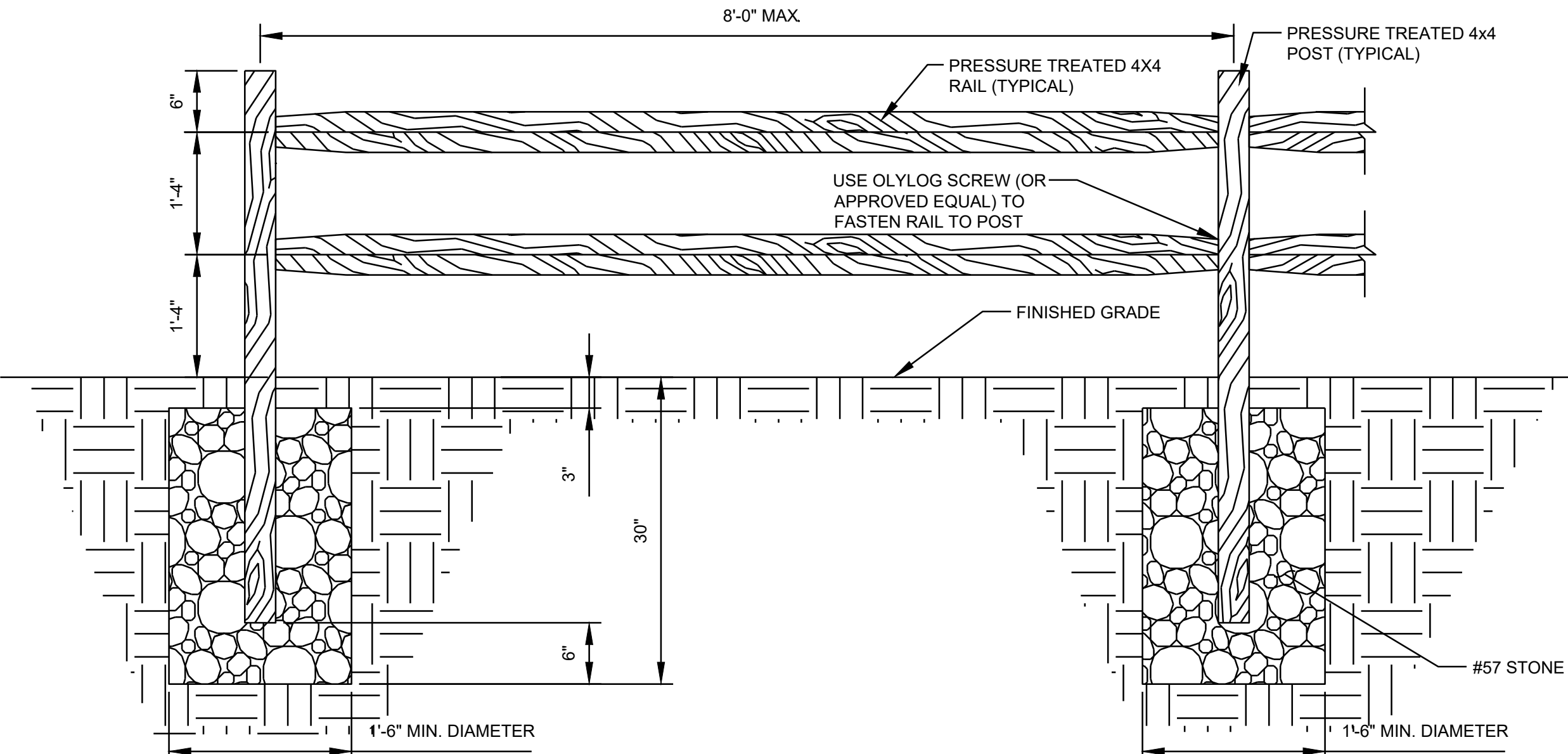
N.T.S.

329303-09

2 TYPICAL RESTORATION PLANTING LAYOUT

NOT TO SCALE

329303-06



4 REFORESTATION SPLIT RAIL FENCE

NOT TO SCALE

323129.13-09

REFORESTATION PLANTING SCHEDULE

PLANTING AREA	QUANTITY	KEY	BOTANICAL NAME	COMMON NAME	SIZE	FORM	COMMENTS
#1 WRA-A area AC 0.03	1	1	<i>Carya glabra</i>	Pignut Hickory	1" CAL.	5 GAL.	PROVIDE A RANDOM PATTERN WITH A MINIMUM SPACING BETWEEN TREES OF 8' O.C.
	1	2	<i>Carpinus caroliniana</i>	Musclewood	1" CAL.	5 GAL.	
	1	3	<i>Carya tomentosa</i>	Mockernut Hickory	1" CAL.	5 GAL.	
	1	4	<i>Celtis occidentalis</i>	Hackberry	1" CAL.	5 GAL.	
	1	5	<i>Diospyros virginiana</i>	Persimmon	1" CAL.	5 GAL.	
	1	6	<i>Nyssa sylvatica</i>	Black Gum	1" CAL.	5 GAL.	
	1	7	<i>Quercus alba</i>	White Oak	1" CAL.	5 GAL.	
	1	8	<i>Quercus phellos</i>	Willow Oak	1" CAL.	5 GAL.	
	1	9	<i>Quercus palustris</i>	Pin Oak	1" CAL.	5 GAL.	
	9		TOTAL TREES				
#2 WRA-B area AC 0.32	11	1	<i>Carya glabra</i>	Pignut Hickory	1" CAL.	5 GAL.	PROVIDE A RANDOM PATTERN WITH A MINIMUM SPACING BETWEEN TREES OF 8' O.C.
	11	2	<i>Carpinus caroliniana</i>	Musclewood	1" CAL.	5 GAL.	
	11	3	<i>Carya tomentosa</i>	Mockernut Hickory	1" CAL.	5 GAL.	
	11	4	<i>Celtis occidentalis</i>	Hackberry	1" CAL.	5 GAL.	
	11	5	<i>Diospyros virginiana</i>	Persimmon	1" CAL.	5 GAL.	
	11	6	<i>Nyssa sylvatica</i>	Black Gum	1" CAL.	5 GAL.	
	10	7	<i>Quercus alba</i>	White Oak	1" CAL.	5 GAL.	
	10	8	<i>Quercus phellos</i>	Willow Oak	1" CAL.	5 GAL.	
	10	9	<i>Quercus palustris</i>	Pin Oak	1" CAL.	5 GAL.	
	96		TOTAL TREES				
#3 WRA-C area AC 0.08	3	1	<i>Carya glabra</i>	Pignut Hickory	1" CAL.	5 GAL.	PROVIDE A RANDOM PATTERN WITH A MINIMUM SPACING BETWEEN TREES OF 8' O.C.
	3	2	<i>Carpinus caroliniana</i>	Musclewood	1" CAL.	5 GAL.	
	2	3	<i>Carya tomentosa</i>	Mockernut Hickory	1" CAL.	5 GAL.	
	3	4	<i>Celtis occidentalis</i>	Hackberry	1" CAL.	5 GAL.	
	3	5	<i>Diospyros virginiana</i>	Persimmon	1" CAL.	5 GAL.	
	2	6	<i>Nyssa sylvatica</i>	Black Gum	1" CAL.	5 GAL.	
	3	7	<i>Quercus alba</i>	White Oak	1" CAL.	5 GAL.	
	2	8	<i>Quercus phellos</i>	Willow Oak	1" CAL.	5 GAL.	
	3	9	<i>Quercus palustris</i>	Pin Oak	1" CAL.	5 GAL.	
	24		TOTAL TREES				

THIS PROJECT WILL RESULT IN 0.13 ACRES OF FOREST CLEARING FROM THE CONSTRUCTION OF THE PARKING LOT IMPROVEMENTS. THE PREVIOUS PHASE 1 CONSTRUCTION CLEARED 0.3 ACRES OF FOREST AND MITIGATION HAD NOT BEEN PROVIDED. THIS CLEARING WILL BE MITIGATED WITH A 1:1 REPLACEMENT OF 0.43 ACRES OF AFFORESTATION AREAS. ALL PLANTING TO BE PROVIDED ON CITY OF BOWIE PROPERTY.

TASKS

MONTHS

	Jan+	Feb+	Mar	Apr	May	June	July	Aug	Sep	Oct	Nov+	Dec+
TRANSPLANT OF 2" DBH OR GREATER												
PLANTING - ALL OTHER MATERIAL, SEEDLINGS, WHIPS, SHRUBS, HERBACEOUS												
MINIMUM MONITORING												
FERTILIZER (IF NEEDED) +												
WATER ++												
PRUNING												
RECOMMENDED, OPTIMAL TIME												
RECOMMENDED, WITH ADDITIONAL CARE												
RECOMMENDED												
DEPENDENT UPON SITE CONDITIONS												
DEPENDENT UPON SITE CONDITIONS: WEEKLY WATERING IS STRONGLY RECOMMENDED FROM MAY THROUGH OCTOBER UNLESS WEEKLY RAINFALL EQUALS 1"												

- NOTES:
- ACTIVITIES DURING NOVEMBER THROUGH FEBRUARY DEPEND ON GROUND CONDITIONS.
 - NO FALL PLANTING OF FALL DUG OAKS AND PINES.
 - THE PLANTING AND CARE OF TREES IS MOST SUCCESSFUL WHEN COORDINATED WITH THE LOCAL CONDITIONS. THIS CALENDAR SUMMARIZES SOME OF THE RECOMMENDED TIME FRAMES FOR BASIC REFORESTATION AND STRESS REDUCTION MEASURES.

3 PLANTING AND MAINTENACE CALENDAR

N.T.S.

329303-03

PHASE 3

QUALIFIED PROFESSIONAL CERTIFICATION

THIS COMPLIES WITH THE CURRENT REQUIREMENTS OF PRINCE GEORGE'S COUNTY CODE AND THE ENVIRONMENTAL TECHNICAL MANUAL.

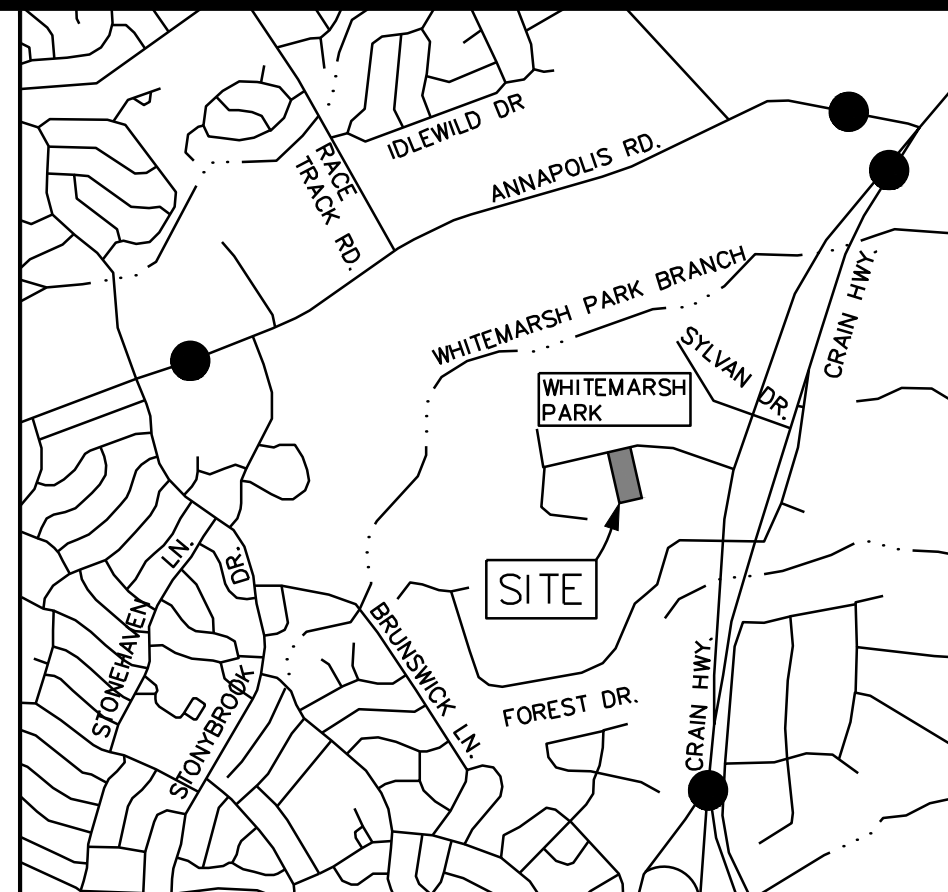
SIGNED: *A. Stirton* DATED: 07/01/2022

ANDREA STIRTON - MD RLA #3956
A. MORTON THOMAS & ASSOCIATES, INC.
800 KING FARM BLVD, FOURTH FLOOR
ROCKVILLE, MD 20850
PH: 301-881-2545
EMAIL: astirton@amtengineering.com

PROPERTY OWNERS AWARENESS CERTIFICATE

I/WE, CITY OF BOWIE, HEREBY ACKNOWLEDGE THAT WE ARE AWARE OF THIS TYPE 2 TREE CONSERVATION PLAN (TCP2) AND THAT WE UNDERSTAND THE REQUIREMENTS AS SET FORTH IN THIS TCP2.

OWNER OR OWNERS REPRESENTATIVE DATE 03/21/2022



VICINITY MAP

SCALE: 1" = 200'

ADC MAP PRINCE GEORGE'S COUNTY

2006 ED., PAGES 10 & 15, PAGE 38, GRID: D4

VSSC GRID: 208N14

WATERSHED: PATUXENT RIVER UPPER (02131104)



MISS UTILITY

48 HOURS BEFORE YOU DIG
CALL "MISS UTILITY" AT 811
OR LOG ON TO www.missutility.net

CALL "MISS UTILITY AT 1-800-257-7777, 48 HOURS PRIOR TO THE START OF WORK. THE EXCAVATOR MUST NOTIFY ALL PUBLIC UTILITY COMPANIES WITH UNDERGROUND FACILITIES IN THE AREA OF PROPOSED EXCAVATION AND HAVE THOSE FACILITIES LOCATED BY THE UTILITY COMPANIES PRIOR TO COMMENCING EXCAVATION. THE EXCAVATOR IS RESPONSIBLE FOR COMPLIANCE WITH REQUIREMENTS OF THE PRINCE GEORGE'S COUNTY CODE.

THIS PLAN IS FOR TREE PROTECTION/
FOREST CONSERVATION PLAN PURPOSES ONLY

LEGEND

- EXISTING SUBJECT PROPERTY / RIGHT-OF-WAY
- EXISTING ADJACENT PROPERTY LINE
- EXISTING MAJOR [5'] CONTOUR (FIELD RUN SURVEY)
- EXISTING INTERMEDIATE [1'] CONTOUR (FIELD RUN SURVEY)
- 2' CONTOUR (GIS)
- EXISTING SOIL TYPE & BOUNDARY
- EXISTING STEEP SLOPES (15% OR GREATER)
- EXISTING BUILDING
- REGULATED STREAM (CENTERLINE)
- 100' RURAL TIER REGULATED STREAM BUFFER
- PMA
- SB
- WOODLAND PRESERVATION AREA (WPA)
- EXISTING EDGE OF EXISTING FOREST
- EXISTING EDGE OF HEDGEROW OR OTHER NON-WOODLAND AREA
- FOREST STAND SAMPLE PLOT
- FOREST STAND IDENTIFIER & BOUNDARY
- STORMWATER PIPE
- STORMWATER UNDERDRAIN
- REFORESTATION AREA (WRA)
- TP
- PERMANENT REFORESTATION FENCE & SIGNAGE
- CSB
- 50' COMAR STREAM BUFFER

AMT

A. MORTON THOMAS AND ASSOCIATES, INC.
CONSULTING ENGINEERS
800 KING FARM BLVD, FOURTH FLOOR, ROCKVILLE, MD 20850
(301) 881-2545 FAX (301) 881-4014
EMAIL: AMT@AMTENGINEERING.COM

DATE NO. REVISIONS

CITY OF BOWIE, MARYLAND

THIS PLAN HAS BEEN REVIEWED AND APPROVED FOR GENERAL CONFORMANCE WITH THE PROVISIONS OF THE CITY CODE. APPROVAL THEREOF DOES NOT RELIEVE THE DEVELOPER OF ANY OTHER REQUIRED PROVISIONS OF THE CODE OR STANDARDS.

CITY ENGINEER

DATE

PUBLIC WORKS DIRECTOR

DATE

OWNER / DEVELOPER: (INSERT NAME, ADDRESS, PHONE & CONTACT)

CITY OF BOWIE - DEPARTMENT OF PUBLIC WORKS
15901 FRED ROBINSON WAY, BOWIE, MD 20716
TEL : (301) 262-6200
FAX : (301) 809-2309

REGISTRATION STAMP



I HEREBY CERTIFY THAT THESE DOCUMENTS WERE PREPARED OR APPROVED BY ME, AND THAT I AM A duly LICENSED LANDSCAPE ARCHITECT UNDER THE LAWS OF THE STATE OF MARYLAND.

LICENSE NO. 3956 EXPIRATION DATE 03/15/2023

OWNER



PROJECT TITLE

WHITEMARSH PARK PHASE 3

16500 WHITEMARSH PARK DRIVE
BOWIE, MD 20716

REVISIONS

MARK	DATE	DESCRIPTION

AMT FILE NO. 15-0460.001

DATE: 2-18-2022

SCALE: AS SHOWN

DESIGNED BY: AMT

DRAWN BY:

CHECKED BY:

SHEET TITLE

REFORESTATION ENLARGEMENT PLAN

SHEET

LR-1.1

REFORESTATION SHEET 7 OF 7